

HI-SPEED USB 2.0 SVGA CONVERTER USER MANUAL

MODEL 179225



Thank you for purchasing the Manhattan® Hi-Speed USB 2.0 SVGA Converter, Model 179225.

Designed to help increase productivity, improve desktop arrangements and extend the visual work area across dual monitors, this device makes word processing, editing and multi-tasking more effective with less-overlapped windows, fewer hidden palettes and better-organized views. Users can read e-mail on one monitor and open attachments on the other. Large, complicated spreadsheets can be expanded and viewed without scrolling.

Presentations are made more compelling with another monitor for more impact or viewing speaker notes on a separate display. The Manhattan Hi-Speed USB 2.0 SVGA Converter supports resolutions of up to 1600 x 1200 in 16-bit or 32-bit color, and its 16 MB DDRAM memory easily enhances the workspace without complicated installations or expensive equipment.

The easy-to-follow instructions in this user manual help make setup and operation relatively simple, so you'll soon be enjoying the benefits of these additional features:

- Software manages up to 6 converters – easily add up to 6 displays to a single PC
- Primary, extended and mirror functions provide display continuity and dual views
- Portable and connects to any USB port without conflicts or external power supplies
- Windows compatible
- Lifetime Warranty

System Requirements

- Windows 2000/XP/Vista/7/8
- Available Hi-Speed USB 2.0 port

Package Contents

- Hi-Speed USB 2.0 SVGA Converter
- Quick install guide and driver CD with user manual

SAFETY & COMPLIANCE STATEMENTS

FCC

This equipment has been tested and found to comply with FCC Part 15 Subpart B § 15.109/15.107 Class B. Operation is subject to the following two conditions: 1) This device may not cause harmful interference; and 2) this device must accept any interference, including interference that may cause undesired operation of the device.

CE

This equipment is in compliance with the requirements of the following regulations: EN 55022 Class B (2006); EN 55024 (1998+A1:2001+A2:2003), (IEC/EN 61000-4-2 [1995+A1:1998+A2:2001]/-3(2006)).

C-Tick

This equipment is in compliance with the requirements of the following regulations: EN 55022 (2006) Class B, AS/NZS CISPR22 © IEC: 2005.

VCCI

This equipment is in compliance with the requirements of the following regulations: CISPR22 © IEC: 2005.

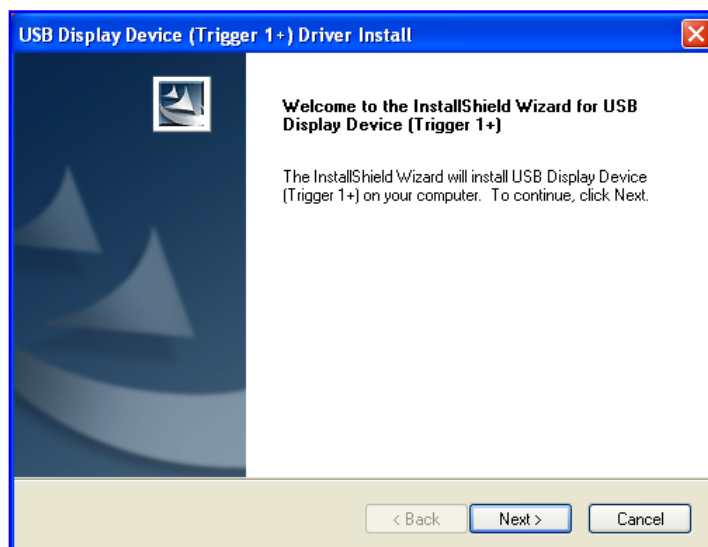
DRIVER INSTALLATION

Installing the device driver enables your computer's operating system to recognize the Hi-Speed USB 2.0 SVGA Converter once it's connected. Check your operating system and refer to the appropriate installation procedure below to begin installing the device driver. **IMPORTANT:**

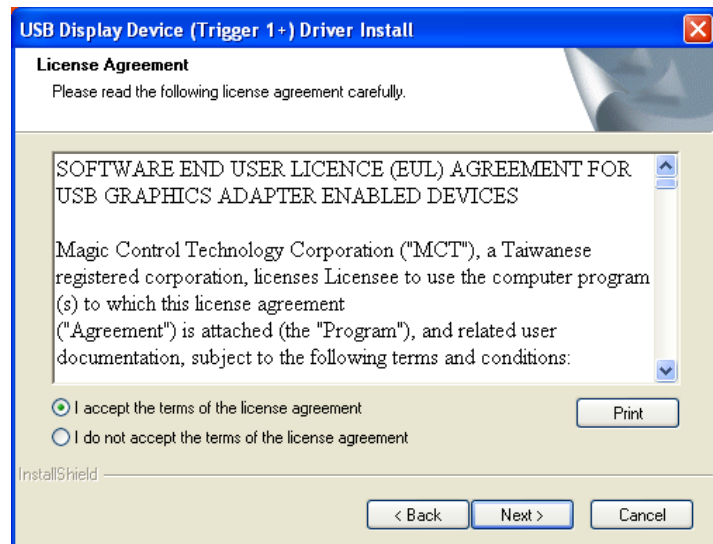
- Unplug the Hi-Speed USB 2.0 SVGA Converter from your PC or notebook before executing any setup or un-install program.
- Make sure you connect the display device to the VGA (HD15) connector of the Hi-Speed USB 2.0 SVGA Converter and switch it on before plugging the converter into an available USB 2.0 port on your PC or notebook (see Steps 6 and 7 below).

WINDOWS 2000/XP

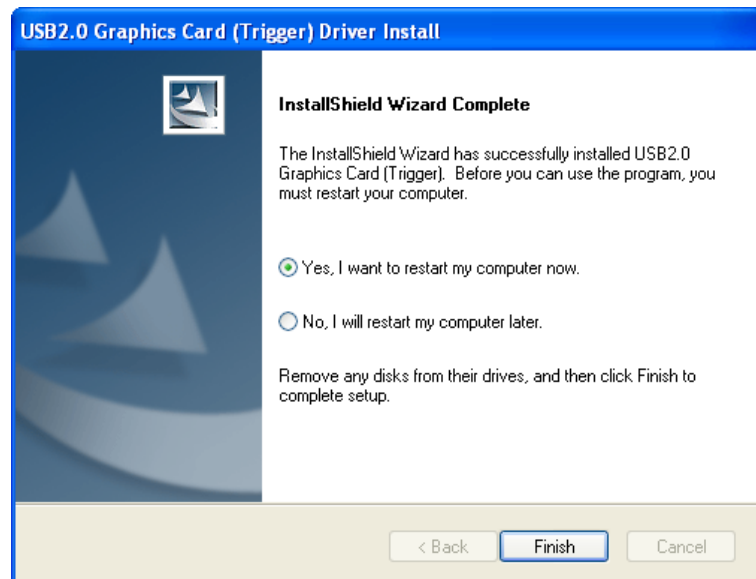
1. Insert the enclosed driver CD into the CD-ROM drive. The setup program should be launched automatically; if not, launch setup.exe from your CD drive manually.
2. When the InstallShield Wizard welcome screen displays, click "Next" to continue.



3. When the License Agreement screen displays, read it and select “I accept the terms of the license agreement.” Click “Next” to continue.



4. When the InstallShield Wizard Complete screen displays, select “Yes, I want to restart my computer now.” Click “Finish” to complete the driver installation.

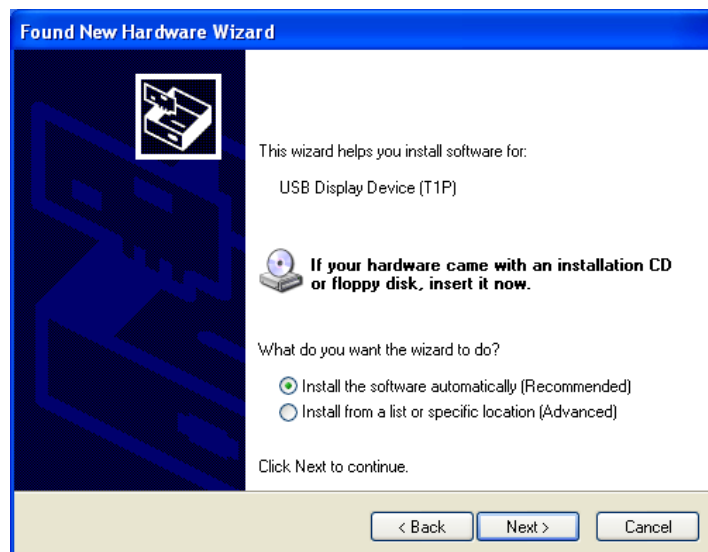


5. Connect the external display device (monitor/projector) to the VGA (DB15) connector of the Hi-Speed USB 2.0 SVGA Converter and switch it on.
6. After rebooting the computer, plug the converter into an available USB 2.0 port on your PC or notebook. The extended display will be shown on the second display device.

7. When the Welcome to the Found New Hardware Wizard screen displays, select “no, not this time” and click “Next.”



8. On the subsequent screen, select “Install the software automatically (Recommended)” and click “Next.”



9. When the Completing the Found New Hardware Wizard screen displays, click “Finish” to complete the procedure.

NOTE: To install additional converters using Windows 2000 or XP, plug each device into an available USB 2.0 port on the PC or notebook and repeat Steps 7 – 9. After rebooting, the extended displays will appear.

Verifying Driver Installation (2000/XP)

On the desktop, right-click My Computer → Properties → Hardware → Device Manager. With the converter plugged in, double-click “Display adapters” and “Universal Serial Bus controllers.”

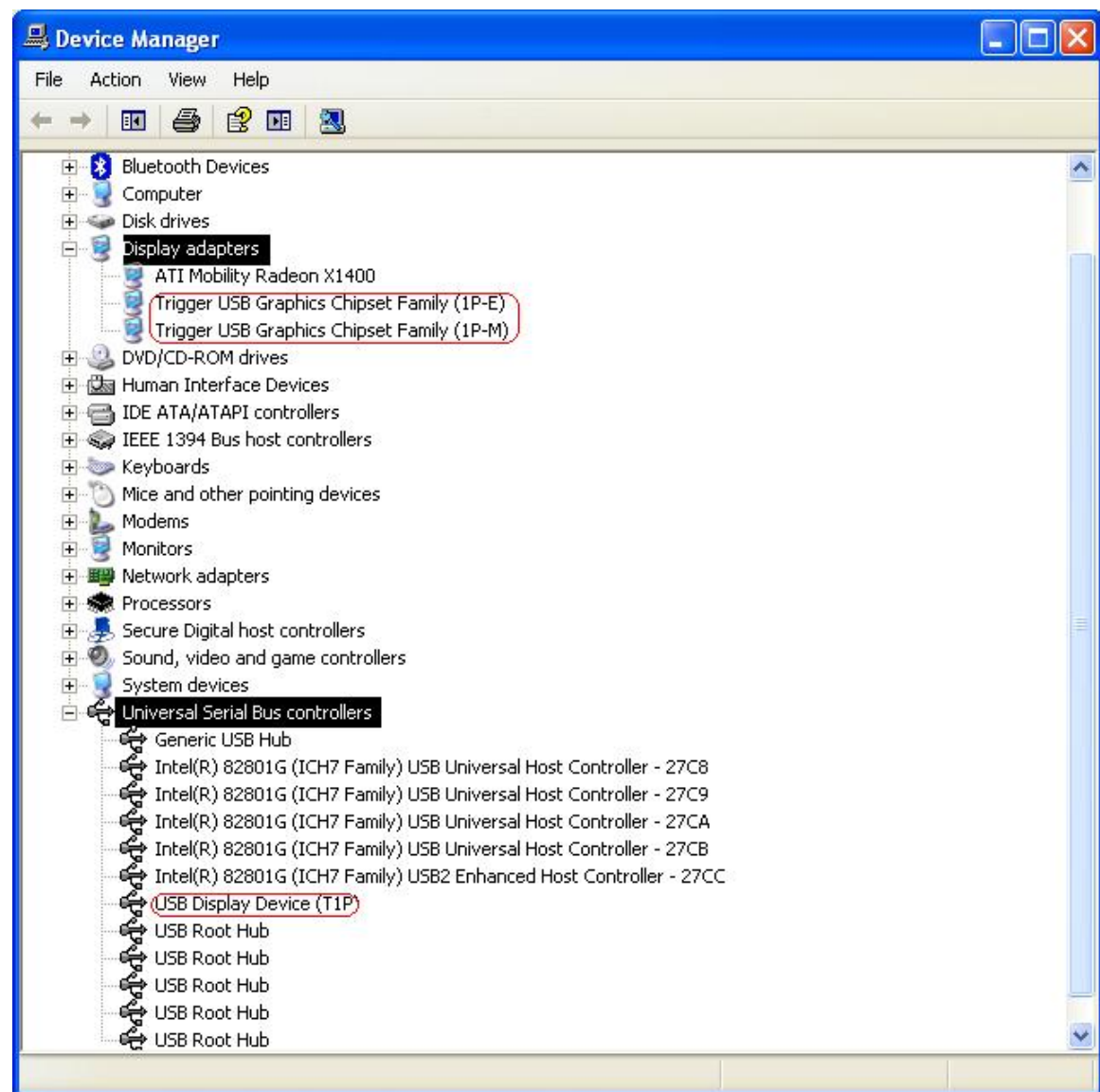
“Universal Serial Bus controllers” should feature:

- “USB Display Device (T1P)”

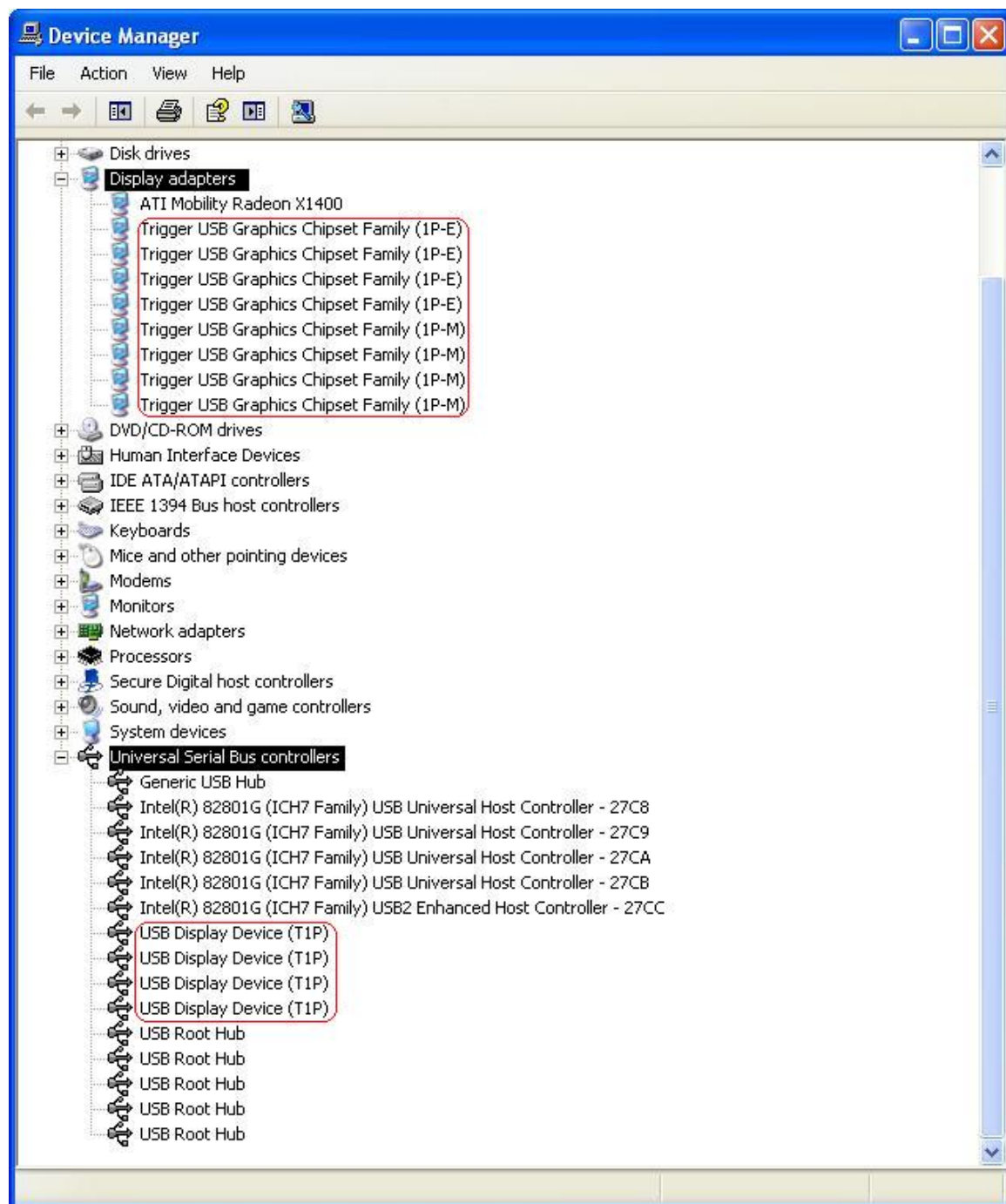
“Display adapters” should feature:

- “Trigger USB Graphics Chipset Family (1P-E)”
- “Trigger USB Graphics Chipset Family (1P-M)”

With the installation of a single Hi-Speed USB 2.0 SVGA Converter:

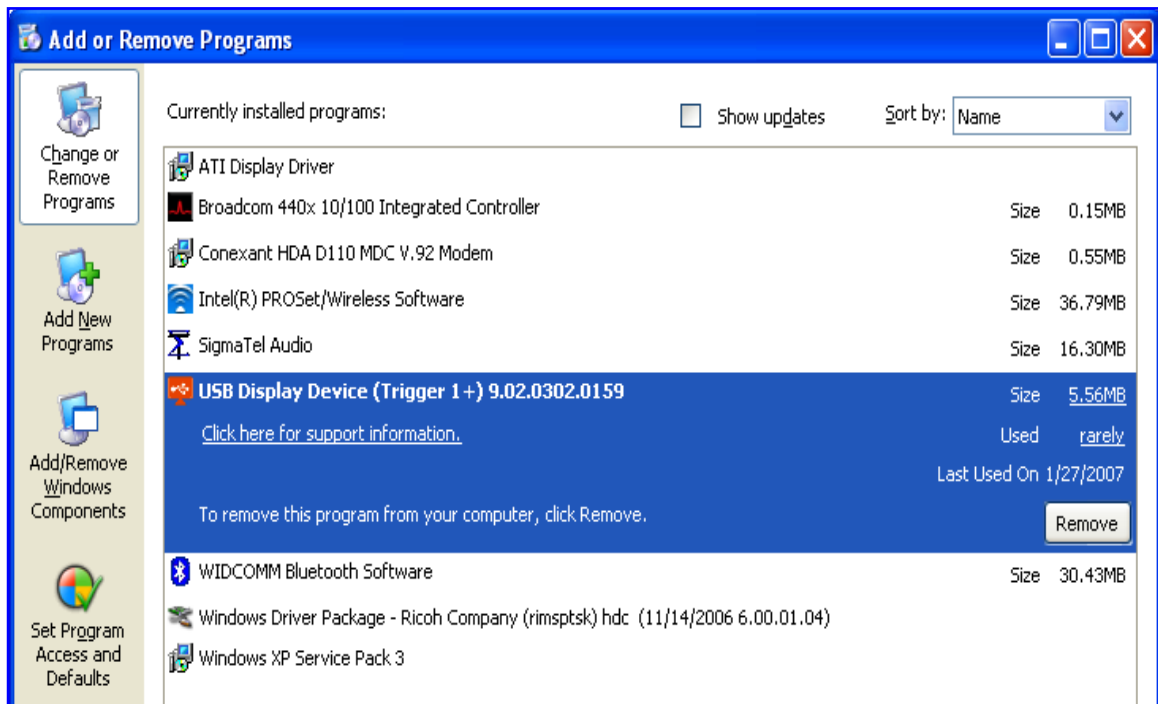


With the installation of multiple Hi-Speed USB 2.0 SVGA Converters:



Driver Un-Install (2000/XP)

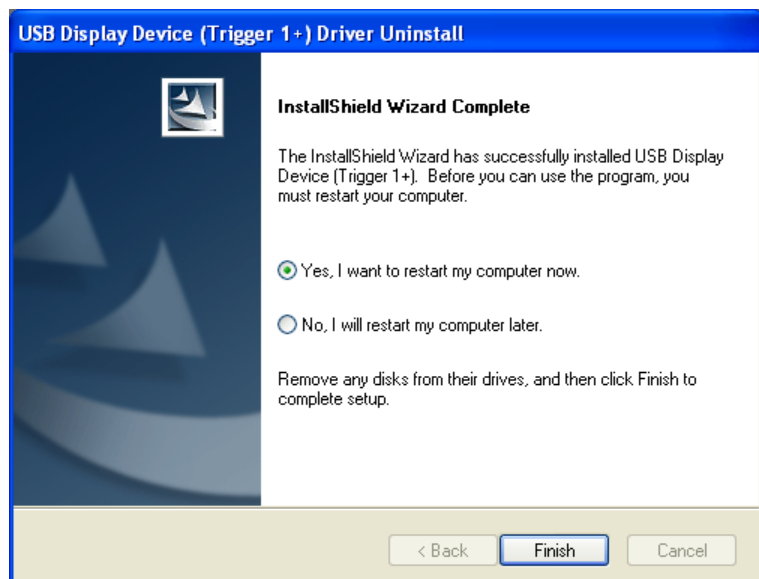
1. On the desktop, go to Start → Settings (Classic start menu only) → Control Panel → Add or Remove Programs.



2. Select “USB Display Device (Trigger 1+) (driver version number)” and click “Remove.”
3. Disconnect the Hi-Speed USB 2.0 SVGA Converter and click “OK” to continue.



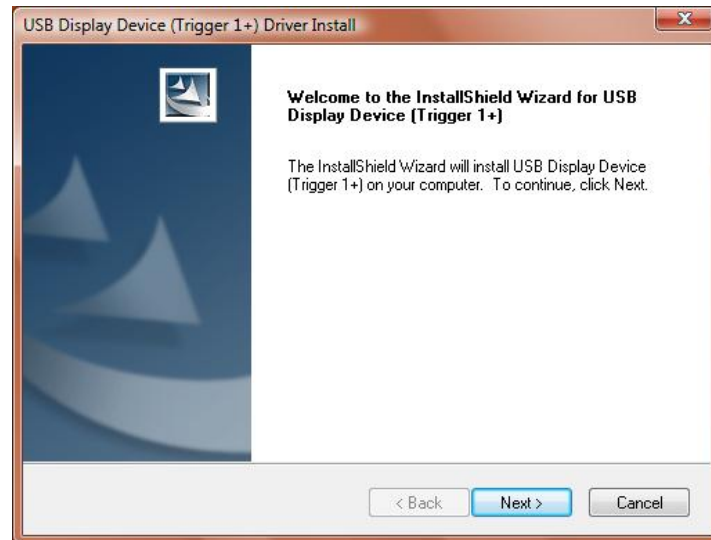
4. Select “Yes, I want to restart my computer now” and click “Finish” to reboot. After rebooting, the driver un-install procedure will be complete.



WINDOWS VISTA/7/8

1. Insert the enclosed driver CD into the CD-ROM drive. The setup program should be launched automatically; if not, launch setup.exe from your CD drive manually.

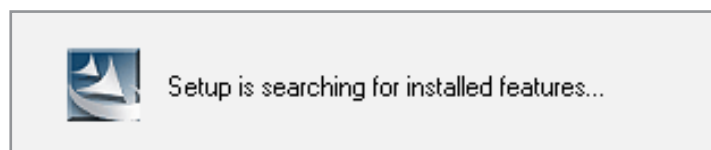
2. When the InstallShield Wizard welcome screen displays, click "Next" to continue.



3. When the License Agreement screen displays, read it and select "I accept the terms of the license agreement." Click "Next" to continue.



4. Setup is searching for installed features.



5. When the InstallShield Wizard Complete screen displays, select "Yes, I want to restart my computer now" and click "Finish" to complete the driver installation.
6. After rebooting, plug the converter into an available USB port on your PC or notebook. Connect the external display device (monitor/projector) to the converter's VGA (HD15) connector and switch it on. The extended display will be shown on the second display device.

NOTE: To install additional converters using Windows Vista, just plug each device into an available USB port on the PC or notebook. After rebooting, the extended display(s) will install and appear.

Verifying Driver Installation (Vista/7/8)

On the desktop, right-click My Computer → Properties → Device Manager; then double-click “Display adapters” and “Universal Serial Bus controllers.”

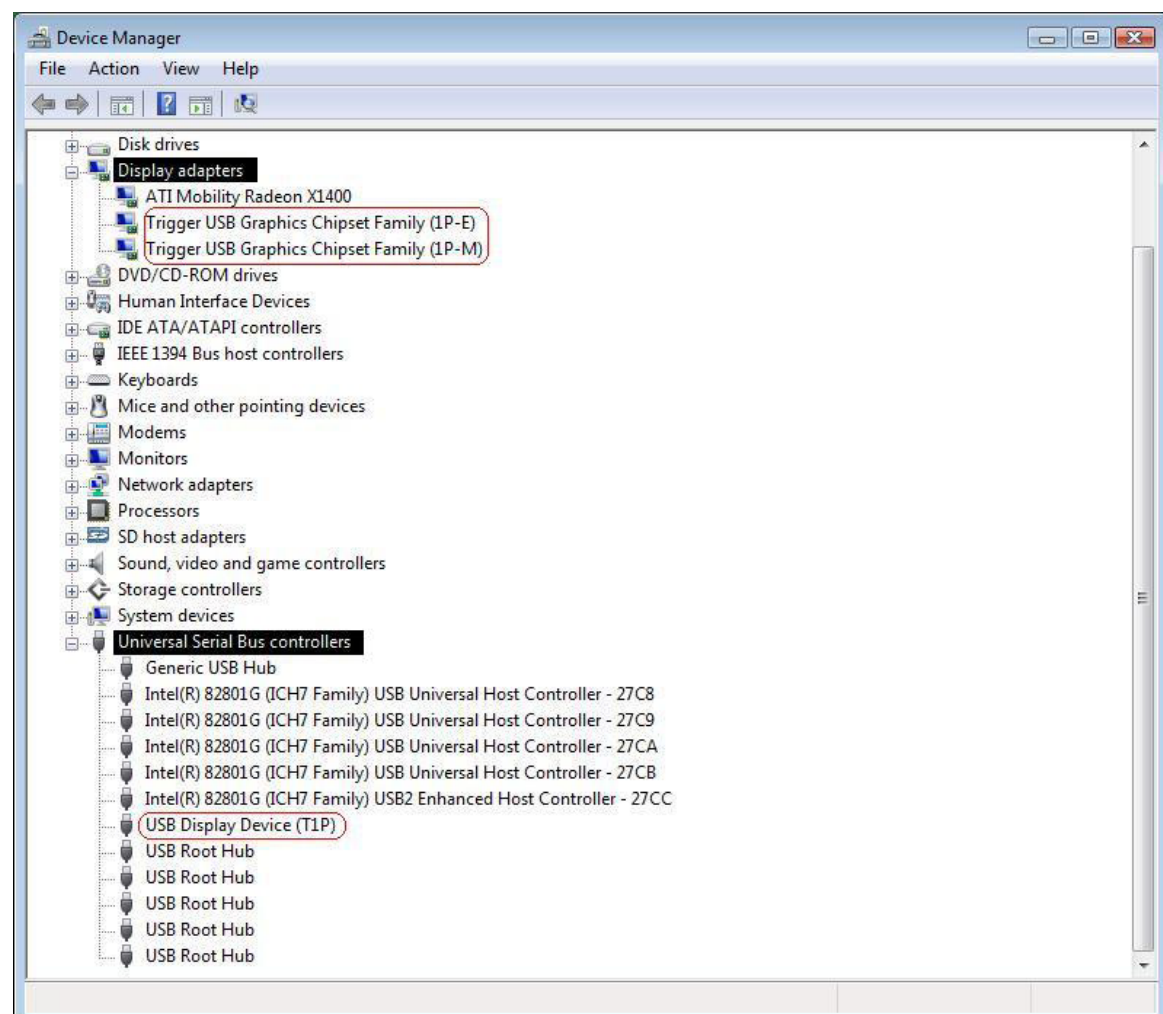
“Universal Serial Bus controllers” should feature:

- “USB Display Device (T1P)”

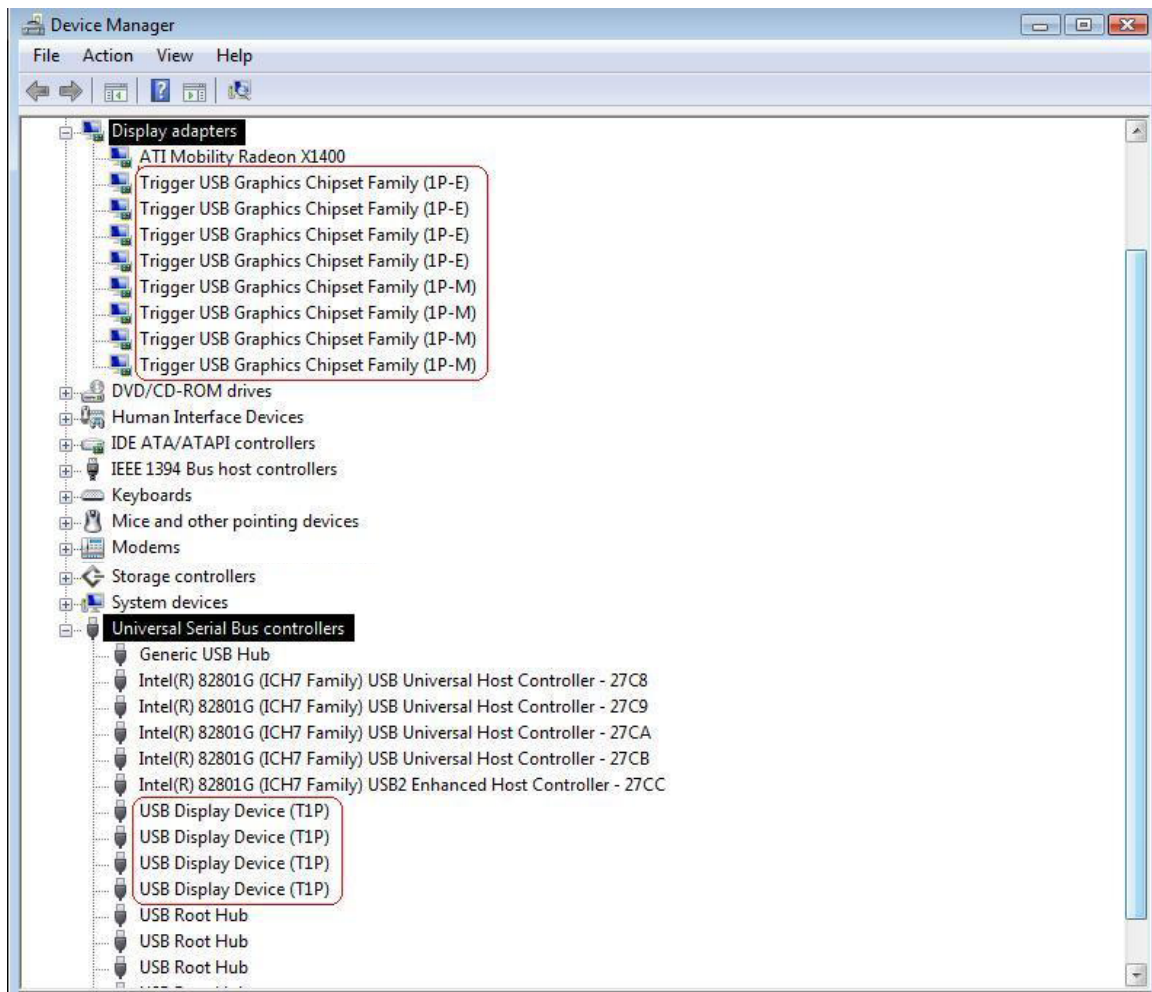
“Display adapters” should feature:

- “Trigger USB Graphics Chipset Family (1P-E)”
- “Trigger USB Graphics Chipset Family (1P-M)”

With the installation of a single Hi-Speed USB 2.0 SVGA Converter:

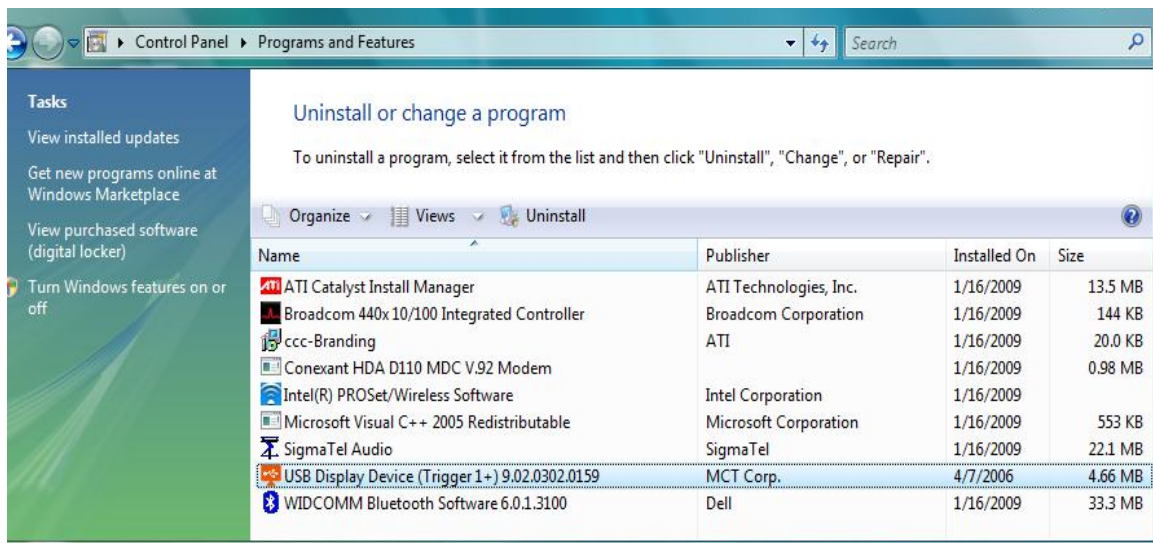


With the installation of multiple Hi-Speed USB 2.0 SVGA Converters:

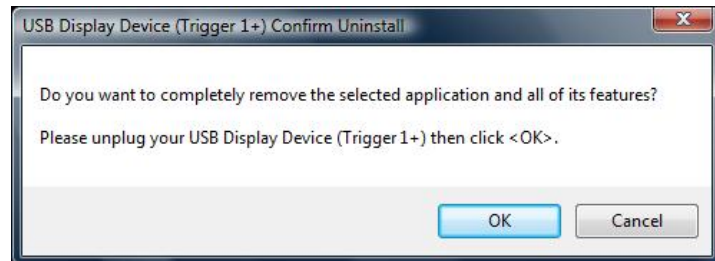


Driver Un-Install (Vista/7/8)

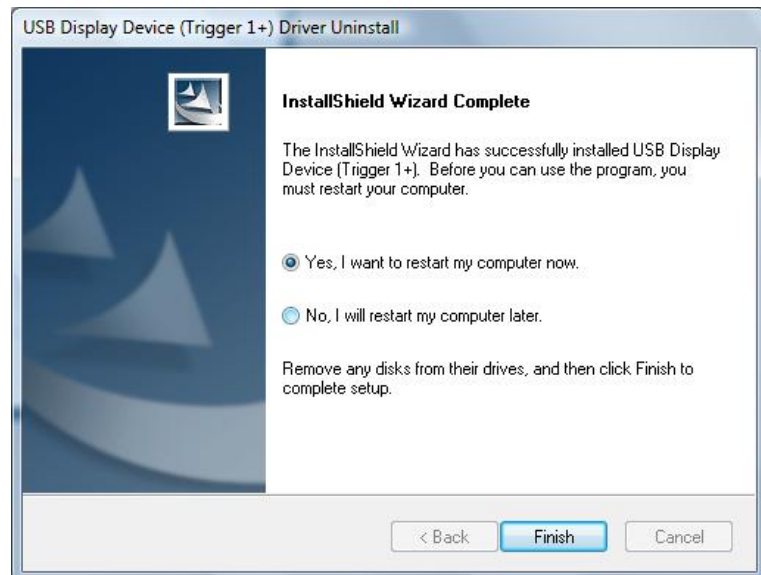
1. On the desktop, go to Start → Control Panel → Programs and Features.
2. Select “USB Display Device (Trigger 1+) (driver version number)” and click “Uninstall.”



3. Disconnect the Hi-Speed USB 2.0 SVGA Converter and click “OK” to continue.



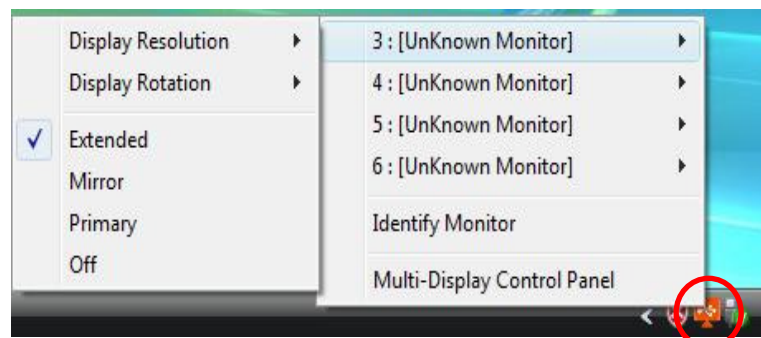
4. Select “Yes, I want to restart my computer now” and click “Finish” to reboot. After rebooting, the driver un-install procedure will be complete.



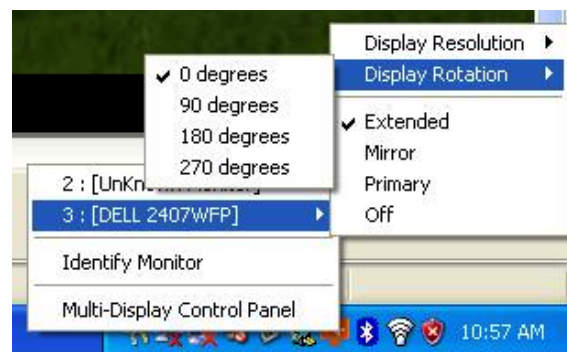
FUNCTIONS

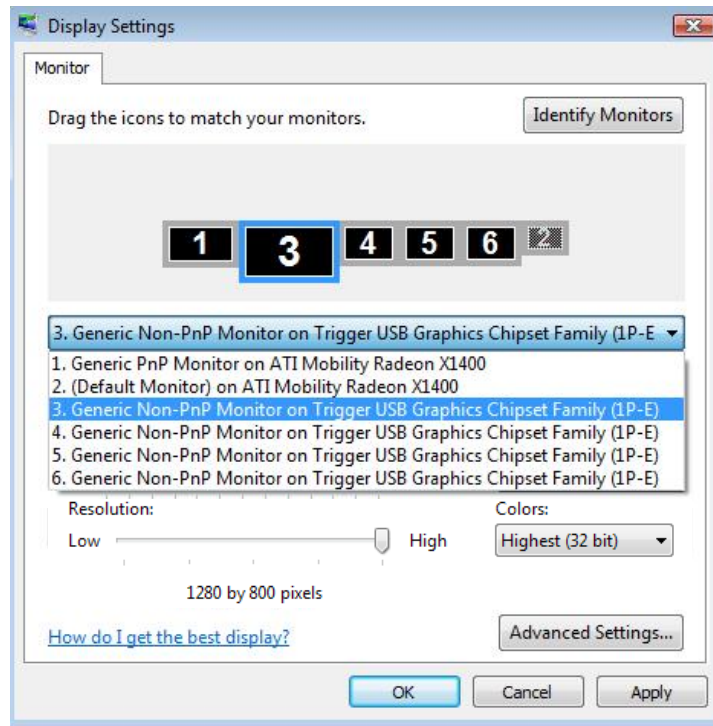
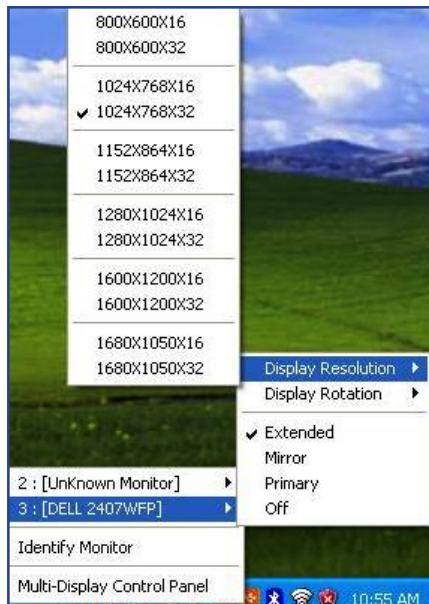
The Hi-Speed USB 2.0 SVGA Converter works with LCD or CRT monitors. Click the USB Display Device icon to choose one of three modes: Primary, Extended and Mirror (plus an Off option).

This also provides access to the Rotation and Resolution options, which can be changed here on the options menu or by going to Display Properties/Settings (as shown below).



- Rotation options let you change the display orientation.
- Resolution options also affect the aspect-ratio format, which can be 4:3, 5:4, 15:9, 16:9 or 16:10 (see Specifications for details).



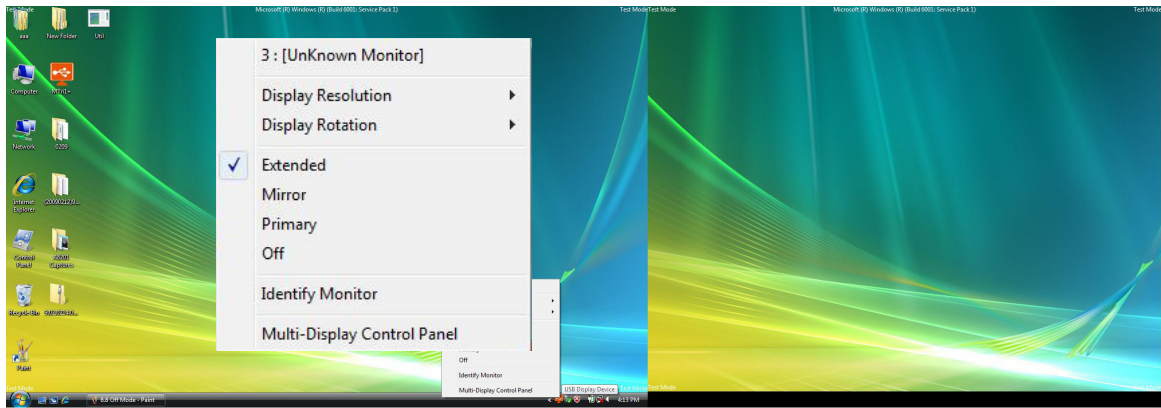


PRIMARY MODE

The display device attached to the Hi-Speed USB 2.0 SVGA Converter acts as the primary display, while the display device attached to the computer now becomes the extended display. **NOTE:** Some display utilities and drivers found with certain AGP and built-in display adapters may prevent this option from working on some systems. You can disable the other utility program (usually in the same toolbar located on the bottom-right corner of the desktop) to make this function work properly.



EXTENDED MODE



By default, the monitor connected to the Hi-Speed USB 2.0 SVGA Converter will work as the “extended” desktop, which expands the primary Windows desktop of your system. You can change the relative position of this extended desktop in Display Properties/Settings.

MIRROR MODE

In this mode, the Windows desktop will be replicated, or “mirrored,” to the secondary CRT/LCD monitor. The screen resolution setting on the secondary monitor will follow the primary screen’s resolution. **NOTE:** If the selected resolution setting is not supported by the primary screen, a warning dialog box will display and the suggested screen resolution will be shown.



OFF

This option simply disables the Hi-Speed USB 2.0 SVGA Converter.

IDENTIFY MONITOR

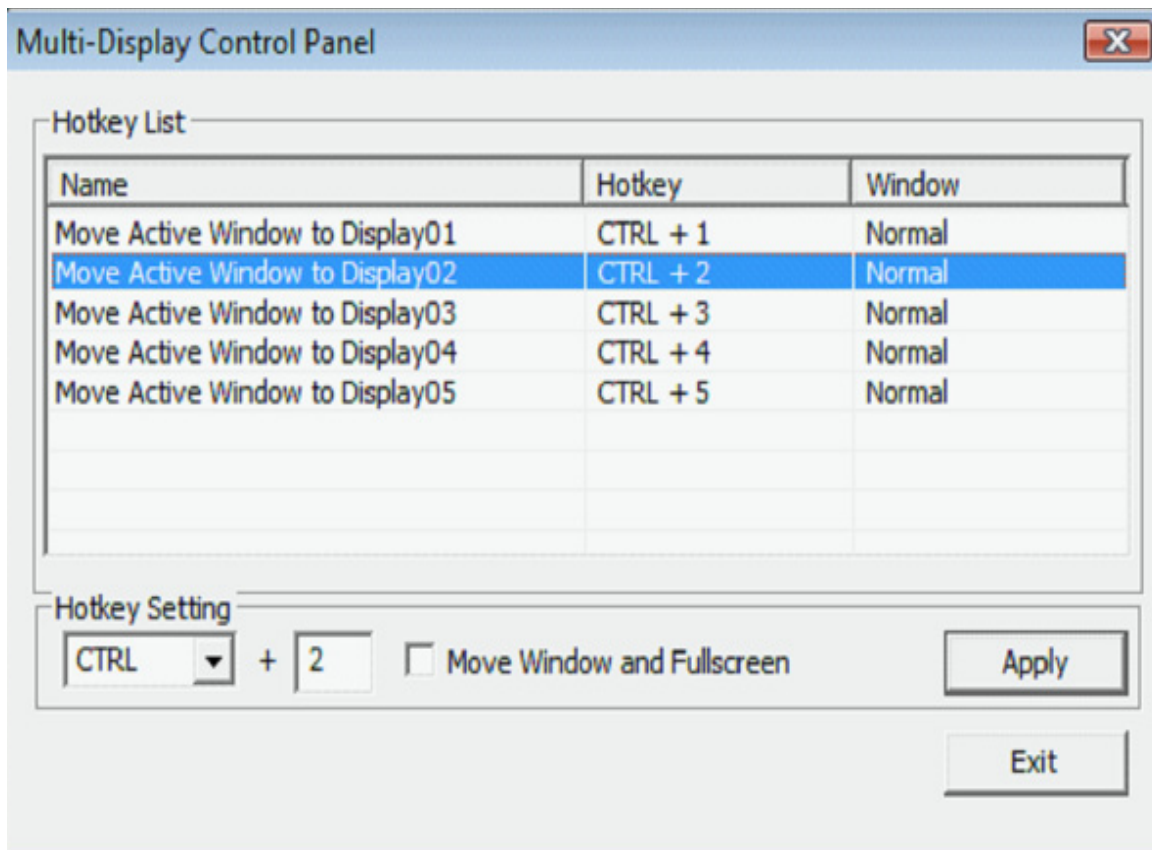


This presents an ID number at the top-right of the display(s) connected to the converter(s) to help you track which display you’re setting up or using.

MULTI-DISPLAY CONTROL PANEL

The Hotkey List on the Multi-Display Control Panel screen allows you to move from one display to another — whether connected directly to the computer or through a Hi-Speed USB 2.0 SVGA Converter — more quickly and easily. The default hotkey settings, which are created as each display device is added to the system through a converter, are displayed on the Hotkey List. By pressing <Ctrl> + <2>, for example, the window is moved to Display 2.

You can re-define each hotkey by highlighting the listed item and using the Hotkey Setting drop-down menu, the corresponding text field and the “Apply” button to personalize the list.

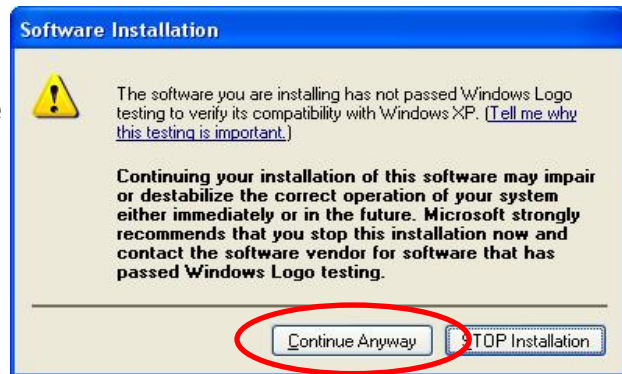


FAQ

Following are some frequently asked questions — and answers — regarding the installation or operation of the Hi-Speed USB 2.0 SVGA Converter.

Q: *During driver installation for Windows 2000/XP, I've seen one or more warning messages referring to the driver or device not passing Windows logo testing. Should I click "Continue Anyway" or "Stop Installation"?*

A: During the driver installation for either Windows 2000 or XP, you may see one or more warning messages (like the one shown at right) display after Step 3 and/or Step 8. Just click "Continue Anyway" and proceed to the next step in the procedure.



Q: *Why can't I make the Hi-Speed USB 2.0 SVGA Converter the primary display?*

A: Some video card manufacturers include a utility that prevents other video cards from being set as the primary card. Check the bottom-right corner taskbar for the utility, and disable the utility before designating the Hi-Speed USB 2.0 SVGA Converter as the primary display.

Q: *Why won't my DVD player work when I move it over to the extended display?*

A: Some DVD playback software packages don't support playing on a second display adapter of any kind. You can try opening the program in the secondary display first before playing the DVD.

Q: *How come my video won't play on Media Player if I move it over to the extended desktop?*

A: Check that you've moved the Media Player window completely over to the second screen.

Q: *Why doesn't my mouse move past the right side of the screen as it should on an extended desktop?*

A: Check the display settings and make sure that your display No. 2 is on the right side of display No. 1. You can rearrange how Windows treats displays in relation to each other in Display Properties/Settings.

Q: *Why are there are lines running horizontally up and down my screen?*

A: This is due to a low refresh rate setting. You can change this by going to Display Properties/Settings → Advanced Settings. **NOTE:** Make sure you select the USB 2.0 VGA device first and not set the refresh rate higher than what your monitor can support, as this can damage your monitor. You can also try to reset/refresh/resynchronize your monitor.

Q: *Why doesn't Direct3D work?*

A: This is a current limitation of the Hi-Speed USB 2.0 SVGA Converter. Check for driver updates to add support for this. If your application requires this, use the main display adapter.

OPERATION TIPS

Following are some tips that may help if you are experiencing any difficulties using the Hi-Speed USB 2.0 SVGA Converter. Contact your dealer for additional assistance, if needed.

- Check to make sure that all connectors are plugged in correctly.
- Make sure that the USB port that you are using is USB 2.0.
- Try a different USB 2.0 port and/or computer.
- Check to see that the monitor is connected correctly and the power is on.
- Try connecting the adapter directly to the computer instead of through a hub.
- Unplug all other USB devices from the system.
- Make sure to restart your computer after the driver installation.
- Unplug the adapter and re-insert it.
- Check the Web site to make sure you have the latest drivers.
- Reset/refresh/resynchronize your monitor.
- Selecting Primary mode may disable the main system display on certain Intel graphics solution-based computer systems.
- If you have problems during the boot-up process, start your computer in Safe mode and un-install the driver. Hold the CTRL key until the Windows startup menu appears and select "Safe Mode."
- To verify the driver version that you installed, go to Control Panel → Add or Remove Programs to check the program: USB Display Device (Trigger 1+) 8.1.0.0516.0146 (driver version).

SPECIFICATIONS

General

- Standards and Certifications: Hi-Speed USB 2.0, EHCI, CE, FCC
- Chipset: MCT Trigger 1+
- Display memory: 16 MB DDRAM
- Bus-powered
- Connections: USB type-A male; HD15 female
- Supports Suspend and Wake modes
- Driver supports up to 6 additional devices
- Rotation modes: 0°, 90°, 180°, 270°
- Supported resolutions:
 - 16:10; 1680 x 1050; 16/32 bits
 - 16:10; 1440 x 900; 16/32 bits
 - 16:10; 1280 x 800; 16/32 bits
 - 16:9; 1360 x 768; 16/32 bits
 - 16:9; 1280 x 720; 16/32 bits
 - 15:9; 1280 x 768; 16/32 bits
 - 5:4; 1280 x 1024; 16/32 bits
 - 4:3; 1600 x 1200; 16/32 bits
 - 4:3; 1400 x 1050; 16/32 bits
 - 4:3; 1280 x 960; 16/32 bits
 - 4:3; 1152 x 864; 16/32 bits
 - 4:3; 1024 x 768; 16/32 bits
 - 4:3; 800 x 600; 16/32 bits

Physical

- Case material: ABS
- Dimensions: 8 x 4 x 2 cm (3.25 x 1.5 x 0.75 in.)
- Cable: 50 cm (19 in.)
- Weight: 79 g (2.8 oz.)

System Requirements

- Windows 2000/XP/Vista/7/8
- Available Hi-Speed USB 2.0 port

Package Contents

- Hi-Speed USB 2.0 SVGA Converter
- Quick install guide and driver CD with user manual

