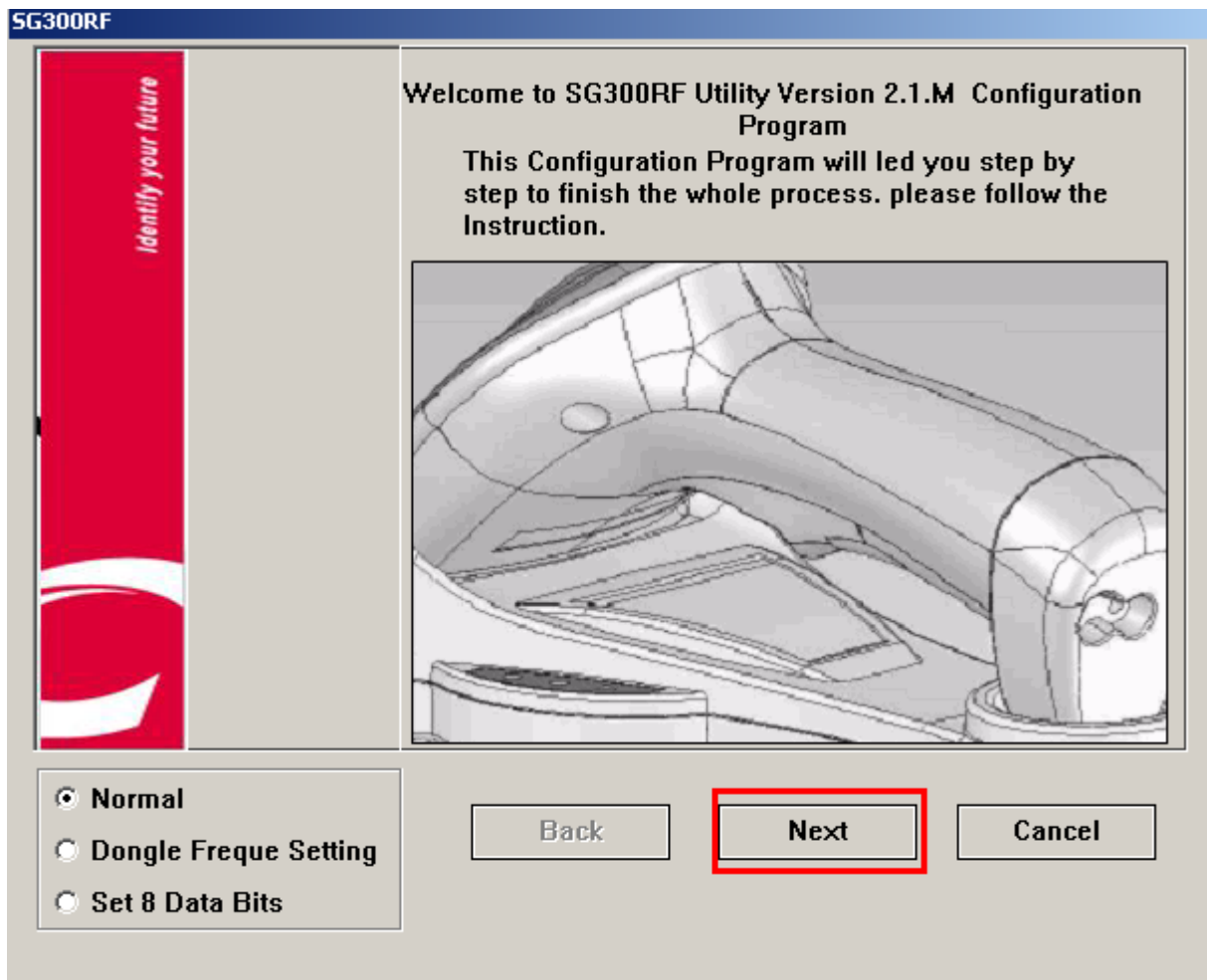


SG300RFM Language setting procedures

1. Please change cable to RS232 Interface
2. Install SG300RF utility
3. Goes to SG300RF utility, click NEXT



4. Press trigger for about 10 sec and scanner red light will be up, then release trigger to hear beep sound

SG300RF

1.Insert the information for RS232 Interface below.
2.Press the trigger on your scanner for 10 seconds until you hear the scanner beeps.
3.Release the trigger and then click on "Next"

Information

Disable pincode command OK!
Press the trigger on your scanner for 10 seconds until you hear the scanner beeps

Port COM1
Baud Rate 9600
Data Bits 8 Data Bits
Stop Bits 1 Stop Bit
Parity None

Next Cancel

5. Click NEXT

SG300RF

1.Insert the information for RS232 Interface below.
2.Press the trigger on your scanner for 10 seconds until you hear the scanner beeps.
3.Release the trigger and then click on "Next"

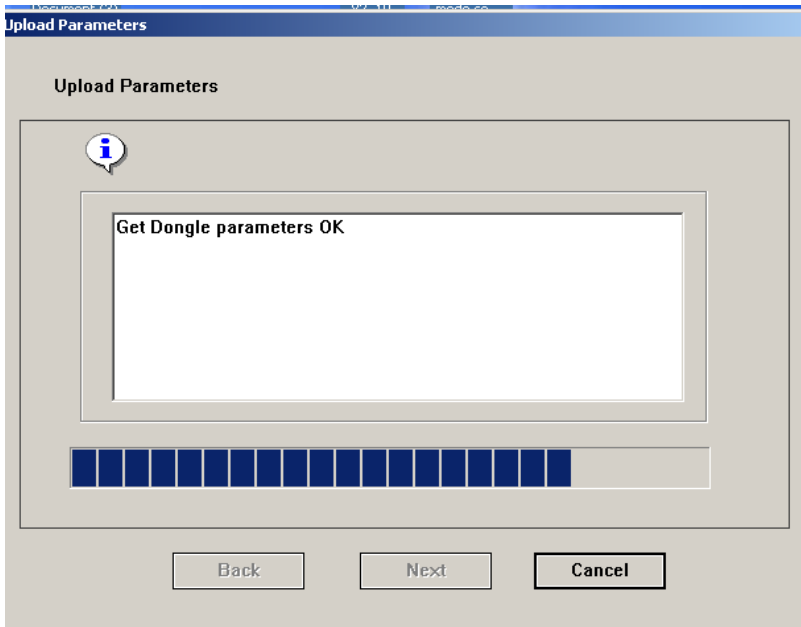
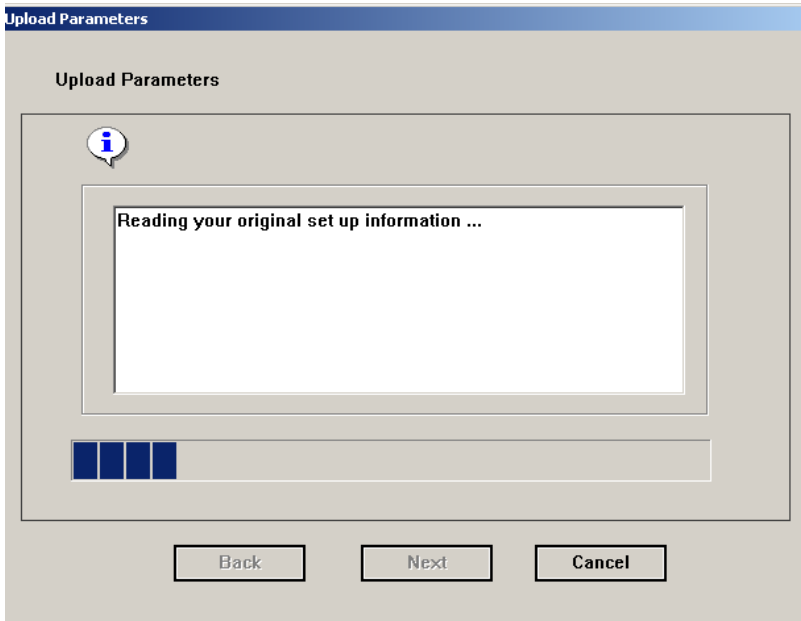
Information

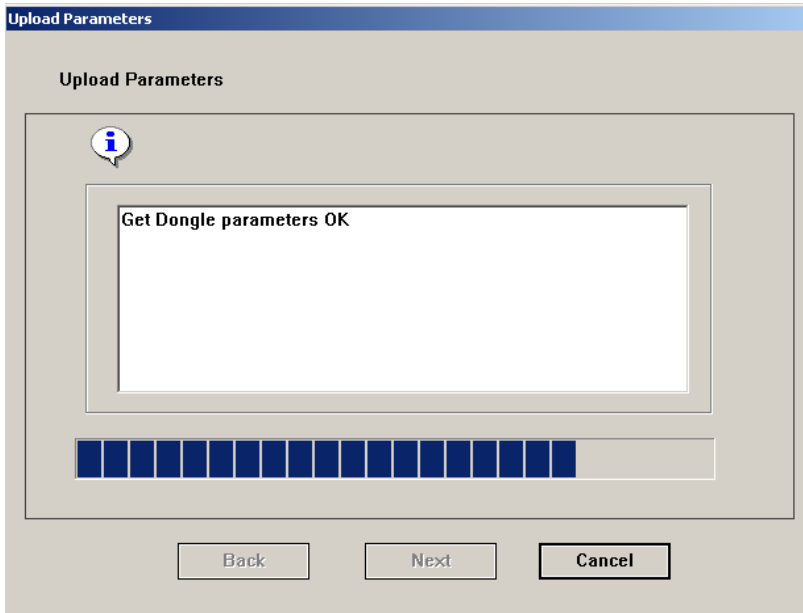
Connect successfully!
Now you can change the setting of your scanner.
Go To Next.

Port COM1
Baud Rate 9600
Data Bits 8 Data Bits
Stop Bits 1 Stop Bit
Parity None

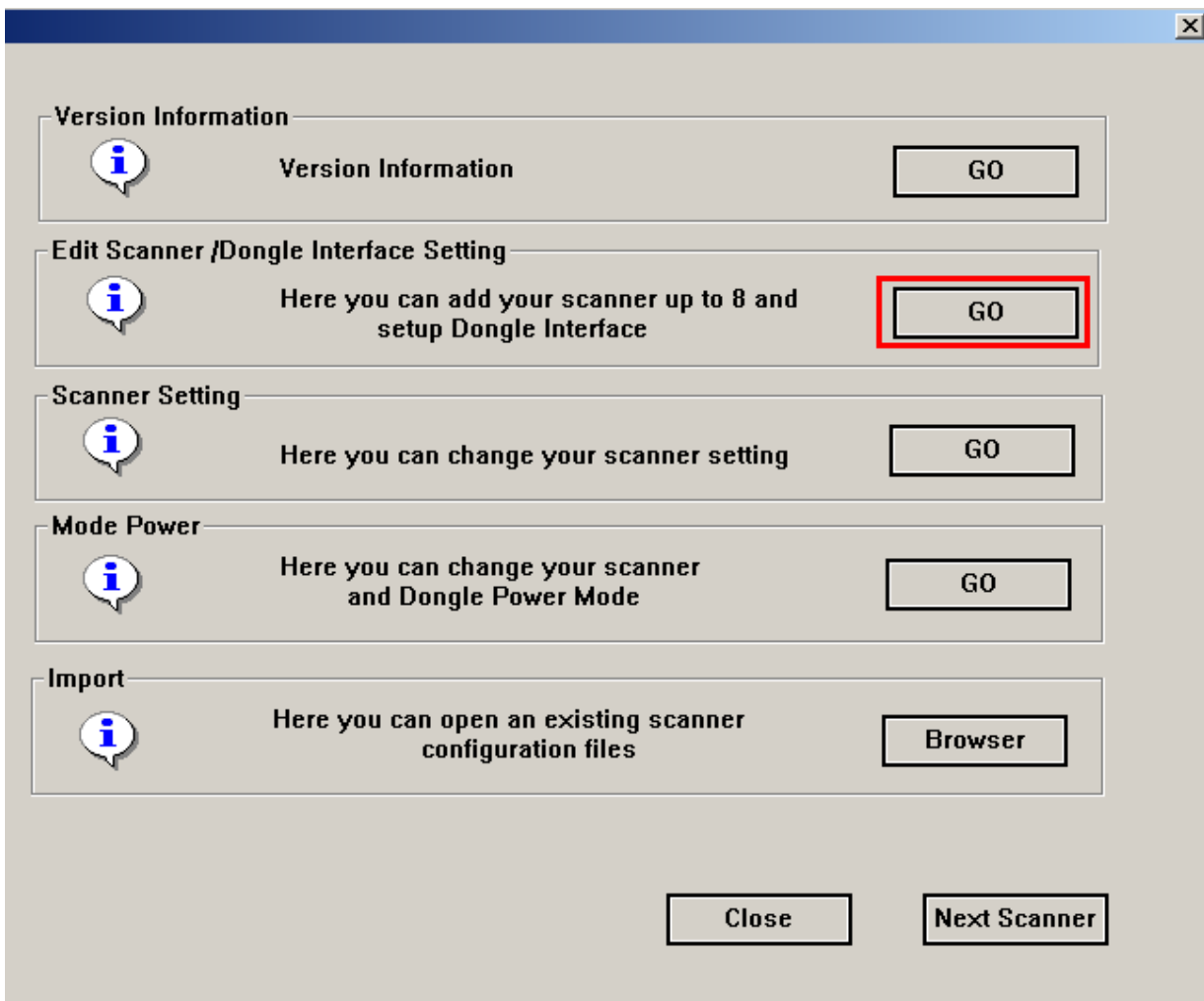
Next Cancel

6. After some processes, click NEXT to go to next step.





7. The second item "Edit Scanner/ Dongle Interface Setting", click go



8. Click NEXT

Scanner #	PinCode
p1	939520
p2	-
p3	-
p4	-
p5	-
p6	-
p7	-
p8	-

9. Interface selection, the default interface is Keyboard Mode, if you would like to use USB interface after this language setting, you do not need to change interface, just keep it as Keyboard mode.

Interface Selection

RS232 Mode

Keyboard Mode

Set Default

10. Goes to Setup Parameters, set Language as Belgium and click Transmit

The screenshot shows the 'Setup Parameters' dialog box with the following settings:

- Interface Selection:** Setup Parameters
- RS232:**
 - Baud Rate: 9600
 - Parity: None
 - Delay time: 0 ms
- Data Bits:** 8 Data Bits
- Hand Shaking:**
 - RTS/CTS:
 - ACK/NAK:
 - XON/XOFF:
- Stop Bits:** 1 Bit
- KeyBoard:**
 - Terminal Type: IBM PC/AT,PS/2
 - Upper/Lower Case: Not Changed
 - Time-Out: 0 ms
- KeyBoard Other:**
 - Send by ALT Method:
 - Numerical Pad:
 - CapsLock Detect:
 - Note Book:
- Language:** Belgium (highlighted with a red box)

Buttons at the bottom: Back, Transmit (highlighted with a red box), Cancel.

11. After transmitted, click CLOSE

The screenshot shows the main utility window with the following sections:

- Version Information:** Version Information (GO)
- Edit Scanner /Dongle Interface Setting:** Here you can add your scanner up to 8 and setup Dongle Interface (GO)
- Scanner Setting:** Here you can change your scanner setting (GO)
- Mode Power:** Here you can change your scanner and Dongle Power Mode (GO)
- Import:** Here you can open an existing scanner configuration files (Browser)

Buttons at the bottom: Close (highlighted with a red box), Next Scanner.

12. Exit SG300RF utility, change cable back to USB and start to use the scanner as Belgium language.