

DRIVE ENCLOSURE USER MANUAL

MODEL 130257



INTRODUCTION

Thank you for purchasing the MANHATTAN® Drive Enclosure, Model 130257.

With support for large-capacity 2.5-inch SATA drives and SuperSpeed USB (USB 3.0) data transfer rates of up to 5 Gbps (up to 1 TB for large-capacity drives), this MANHATTAN Drive Enclosure helps optimize high-performance personal computer storage applications.

A convenient built-in, one-touch copy feature helps to quickly transfer, share and archive important data. Its durable, two-piece construction and cover lock provide quick installation and access while protecting sensitive drives from exposure and daily hazards. It's a versatile and portable data solution without bulky external power supplies or annoying cables and adapters.

By following the instructions in this user manual, you'll soon be enjoying these popular features:

- Plug and Play and hot-swappable capabilities; Windows and Mac compatible
- Lifetime Warranty (For a complete list of country-specific warranties, go to www.manhattan-products.com/warranty.)

System Requirements

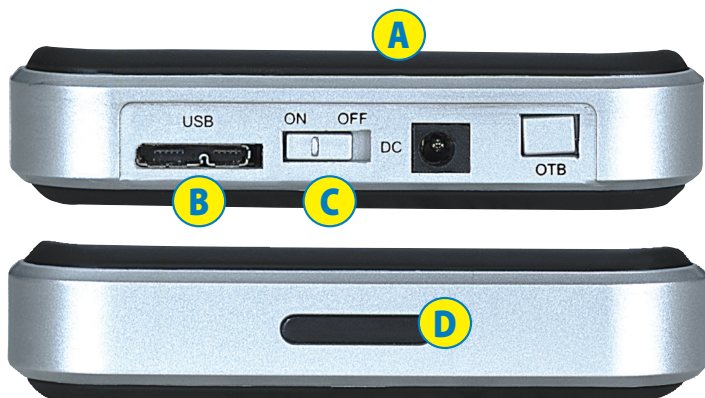
- Available USB 3.0 Standard-A port
- Windows XP/Vista/7 and Mac OS 8.6 or later versions

Package Contents

- Drive Enclosure
- USB 3.0 cable
- Software CD with user manual; multilanguage quick install guide

HARDWARE INSTALLATION

1. Remove the top of the enclosure (A).
2. Carefully place your hard drive in the base of the enclosure so a solid connection is made with the 22-pin SATA connector.
3. Plug the 1-connector end of the included USB cable into the enclosure's USB port (B).
4. Plug the 2-connector end of the USB cable into the computer's USB ports.
5. Set the On/Off switch (C) to On. Confirm that the Power LED (D) lights.



DRIVER INSTALLATION

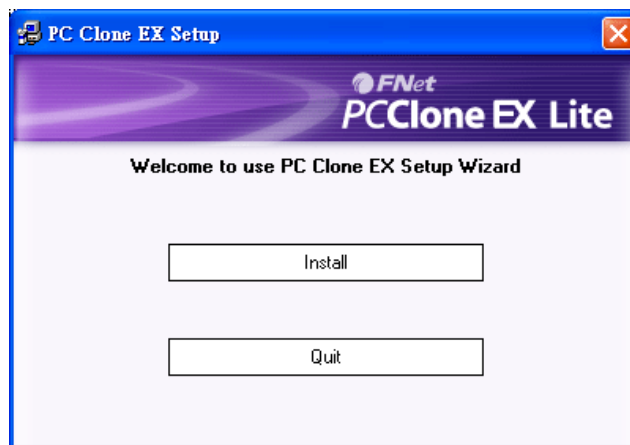
Once the enclosure is connected to your PC, your system will automatically detect the new hardware and complete the setup, confirmed when “USB Mass Storage Device” displays in the Device Manager folder.

SOFTWARE INSTALLATION

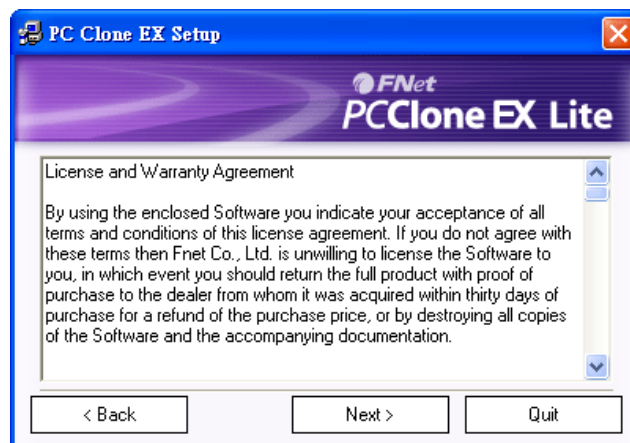
These steps are for the installation of the convenient one-touch backup software.

NOTE: *This software doesn't support Mac operating systems.* Some images may look different on your computer, as your software version may be slightly different than the one represented here.

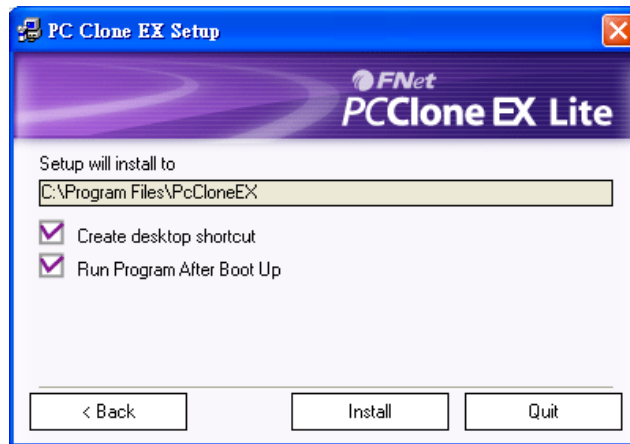
1. Load the included software CD. The PC Clone EX setup wizard's Welcome screen will display automatically. Click “Install” to continue.



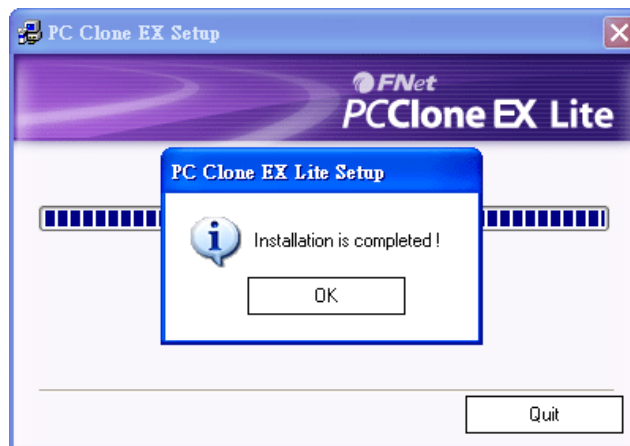
2. When the license and warranty agreement displays, read it and click “Next” to continue. **NOTE:** Most screens present the option of clicking “Back” to return to a previous screen or “Quit” to stop the installation procedure.



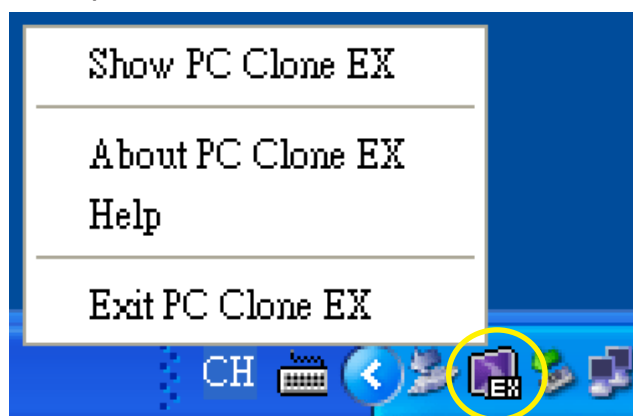
3. On the subsequent Setup screen, click “Install” to proceed.



4. The final Setup screen will display a status bar to indicate the progress of the installation. When finished, the wizard will display an “Installation is completed!” message. Click “OK” to exit the wizard.



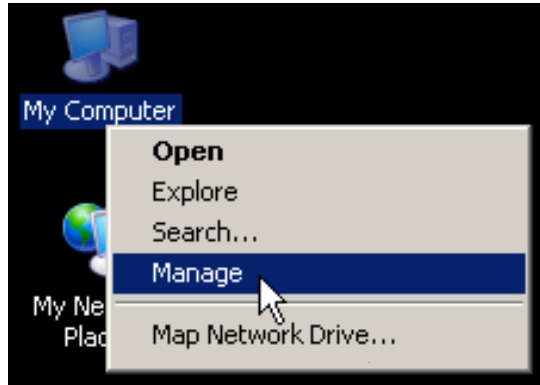
5. A PC Clone EX icon will display in the menu tray. Double-click on the icon to access the menu of options.



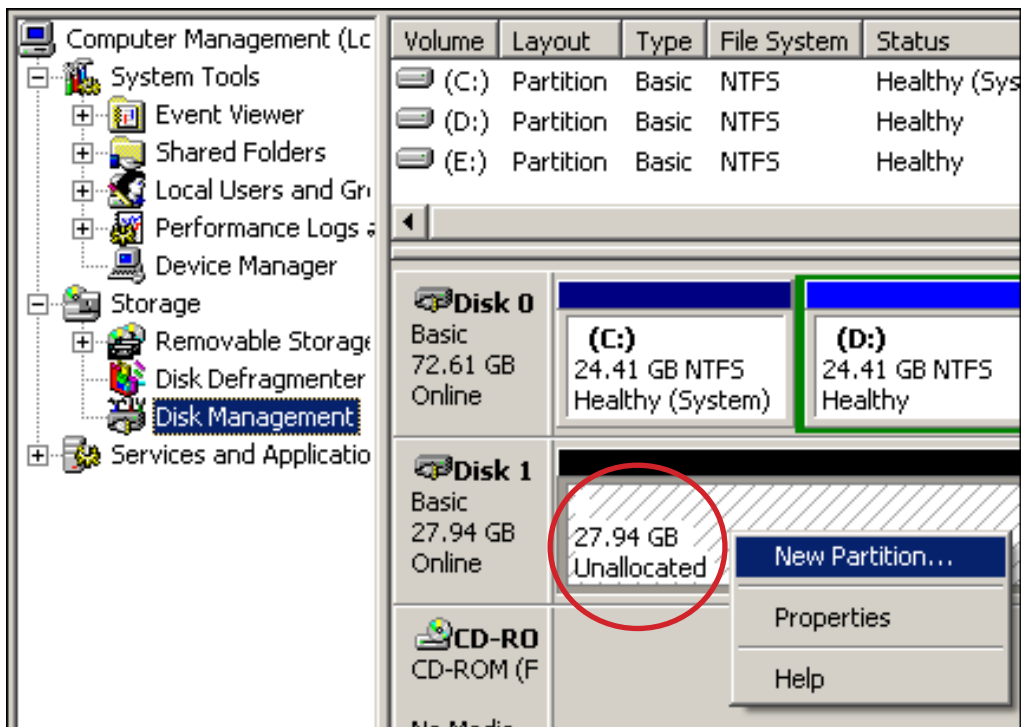
CREATING PARTITIONS

NOTE: If the hard drive you have placed in the enclosure (the drive that you are copying data to) has already been partitioned, you can proceed to the next section.

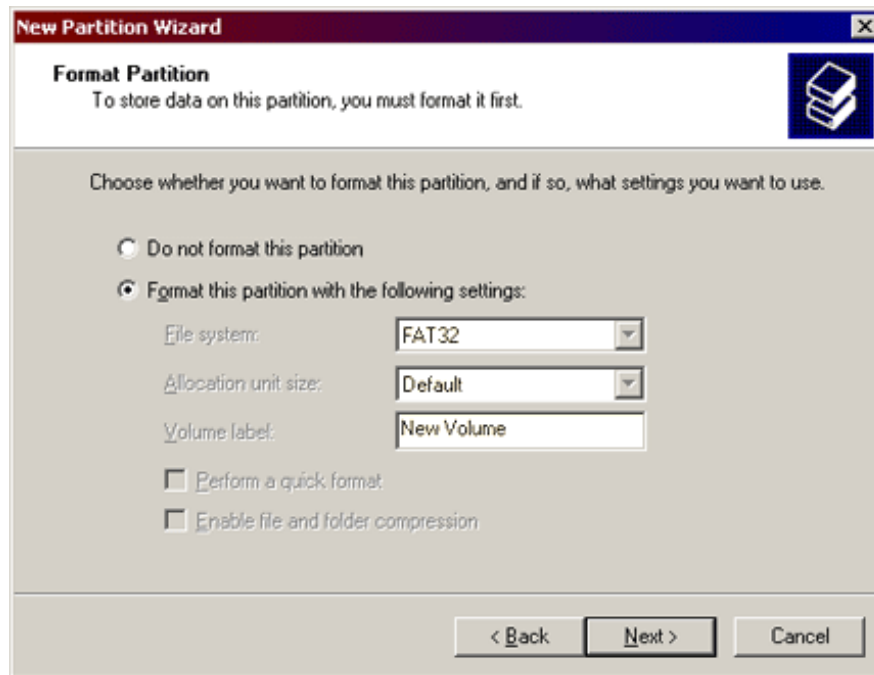
1. With the Drive Enclosure plugged into a USB port on your computer and powered on (see Hardware Installation above), right-click My Computer on your desktop and go to Manage. (Or go to Start / Control Panel / Administrative Tools / Computer Management.)



2. In the left-hand file directory, click/select “Disk Management” so its screen displays on the right. Right-click on the disk identified as “Unallocated,” then click/select “New Partition...” from the pop-up menu. **NOTE:** To confirm that the drive you’ve placed in the enclosure is indeed the unallocated disk, disconnect the USB cable and see if the corresponding “Unallocated” text disappears.



3. With the Format Partition screen displayed, select your preferred settings, then click “Next” to continue.



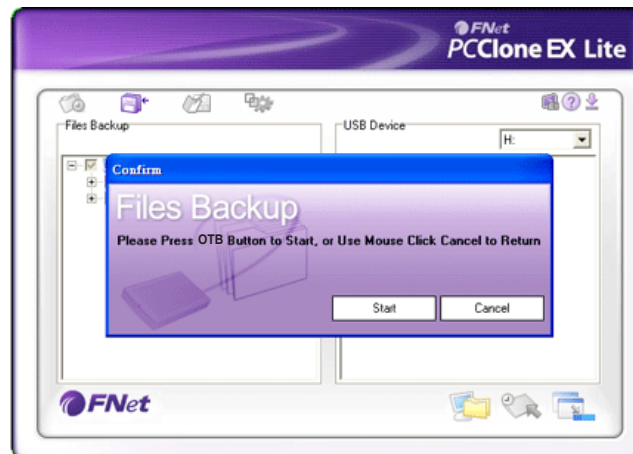
OPTION: An alternative pathway for accessing the formatting options is through Start on your desktop, then All Programs / PCCloneEX / FNet FAT32 Format. The formatting details and instructions will appear on the screens that display.



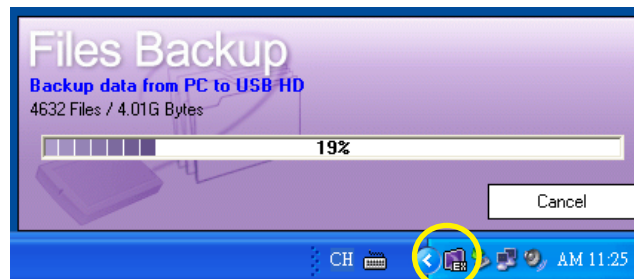
ONE-TOUCH BACKUP FUNCTION

To use any of the features available with this function, be sure the drive enclosure is plugged into a USB port on your computer and powered on, and that a backup drive has been properly loaded in the enclosure. **NOTE:** Before backing up files for the first time using this device, it's recommended that the function parameters be set on the File Backup Settings screen in the PC Clone EX program.

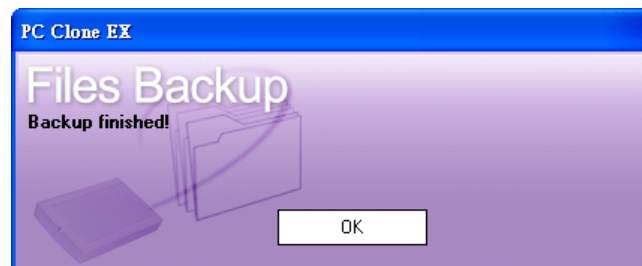
1. With the PC Clone EX program open (see Hardware Installation above), press the OTB (one-touch backup) button on the drive enclosure.
2. When the initial File Backup screen displays, click "Start" to begin copying the designated files.



3. Allow the backup to continue while the status screen is displayed. (Or click "Cancel" if you need to interrupt or stop the process.)



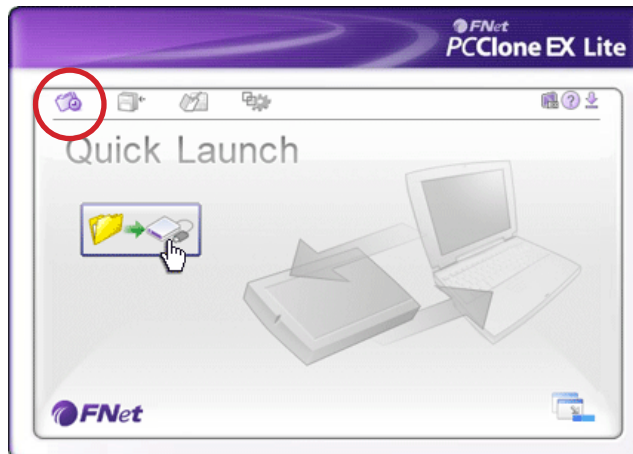
4. When the "Backup Finished!" message displays, click "OK."



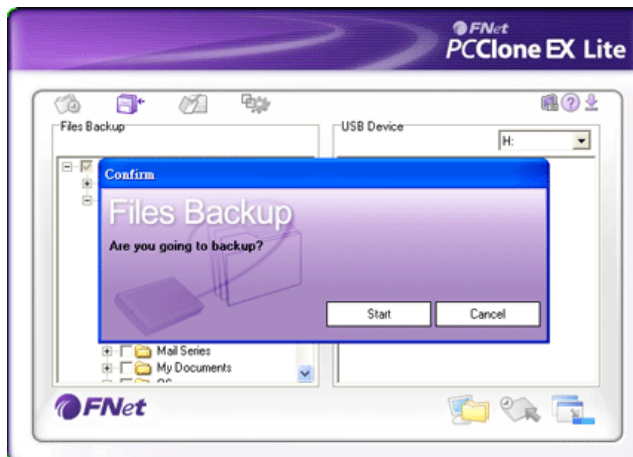
Quick Launch

The Quick Launch screen displays automatically when the PC Clone EX program is opened. From here, you can either continue through the quick file backup steps below or select one of the other menu options: File Backup (which offers more options than this simpler Quick Launch procedure), File Manager and File Backup Settings — each of which is described in separate sections in this user manual — plus About and Help.

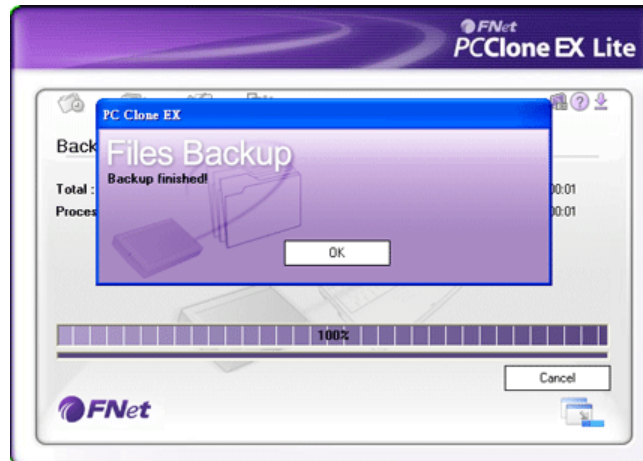
1. Simply click on the rectangular File Backup icon (as shown in the image below). **NOTE:** If using this function for the first time, go to File Backup Settings to set up the function parameters. **OPTION:** The File Backup Settings screen is where a hotkey can be created for even quicker use of the backup function.



2. When the “Are you going to back up?” prompt displays, click “Start.”

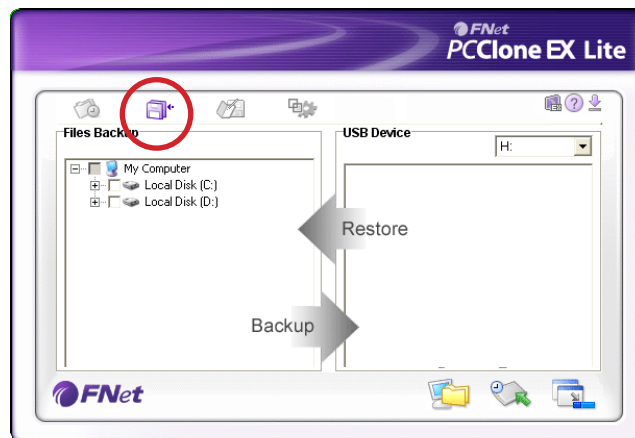


3. When the file backup begins, a status bar displays to indicate the progress of the procedure. When the “Backup finished!” prompt displays, click “OK.”



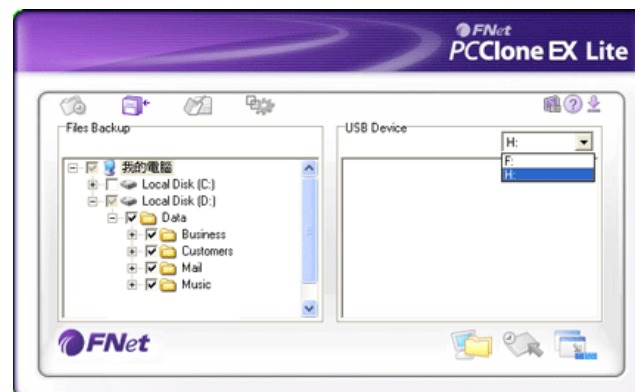
File Backup

For options beyond just copying files, click on the File Backup icon. This presents restore (should the original files be lost or damaged) and delete options, as well.

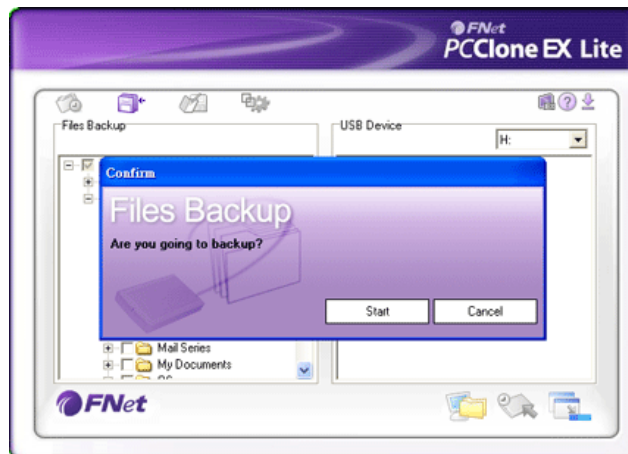


Backing Up Files

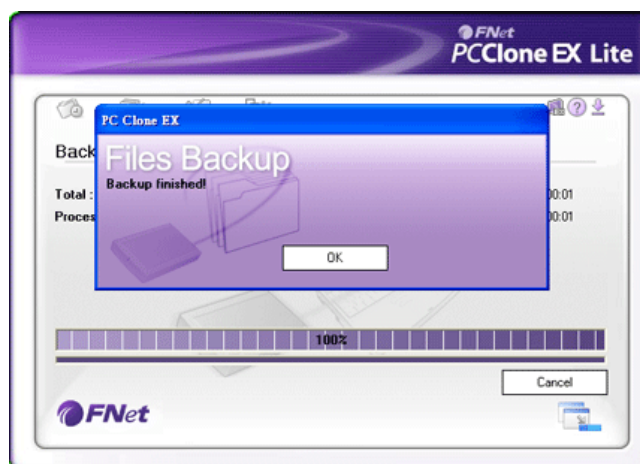
1. In the left-hand (Files Backup) window, select the folders/drives to be copied from the source device. Click the File Backup icon to continue.



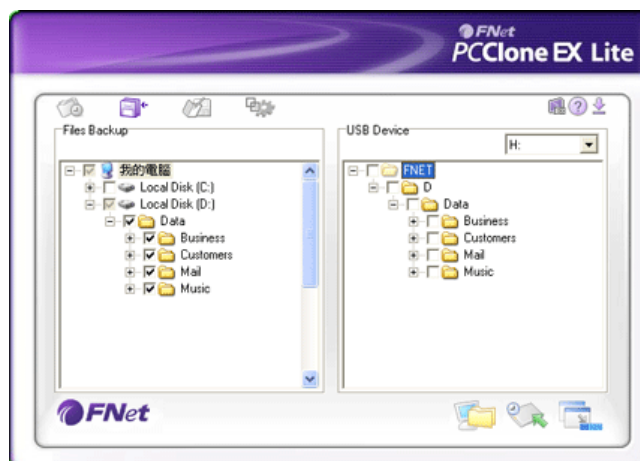
2. When the “Are you going to back up?” prompt displays, click “Start.”



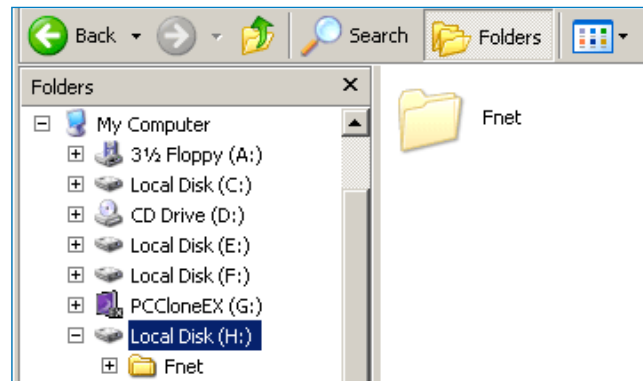
3. When the “Backup Finished!” message displays, click “OK.”



The selected items will appear in the right-hand (USB Device) window.



IMPORTANT: A root directory (FNet) folder will display in the USB Device window. This is where all the backed-up files are stored, so be careful not to delete it unintentionally.

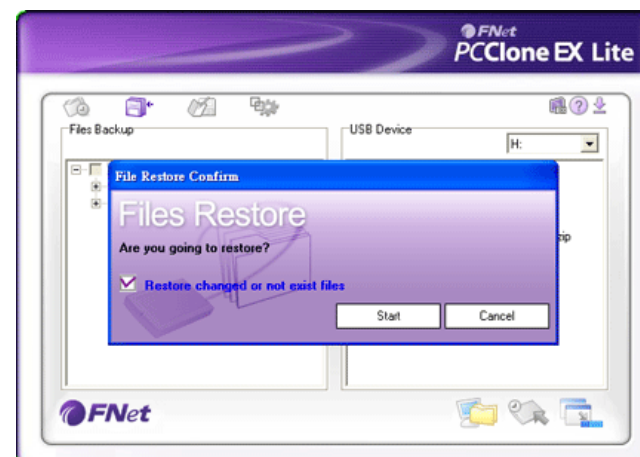


Restoring Files

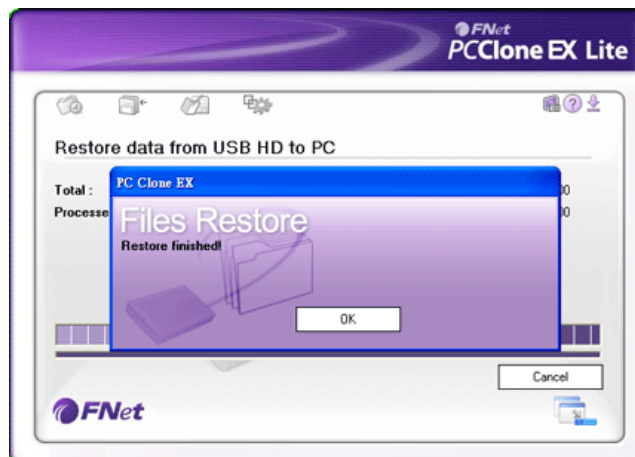
1. In the event you need to copy files from the backup drive to the original source device (to replace lost or damaged originals, for example), select the items in the right-hand (USB Device) window.



2. When the “Are you going to restore?” prompt displays, click “Start.”

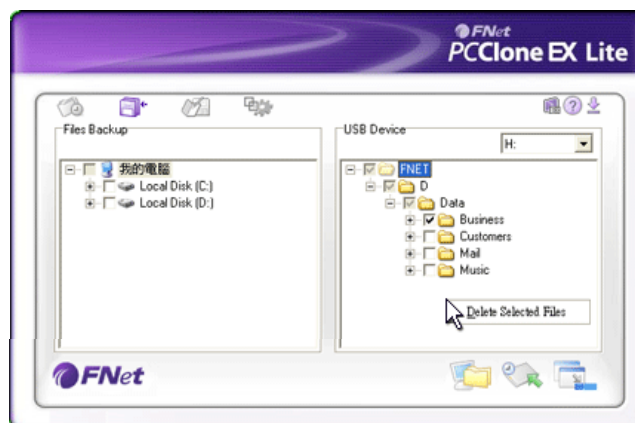


3. When the “Restore Finished!” message displays, click “OK.” The selected items will appear in the left-hand (File Backup) window.

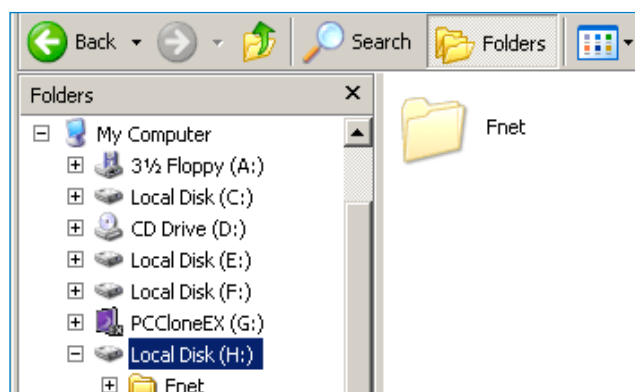


Deleting Files

1. Select a file (or files) you wish to delete in the USB Device window.
2. Right-click your mouse to display the “Delete select files” option. Select this option, and all highlighted files will be removed.

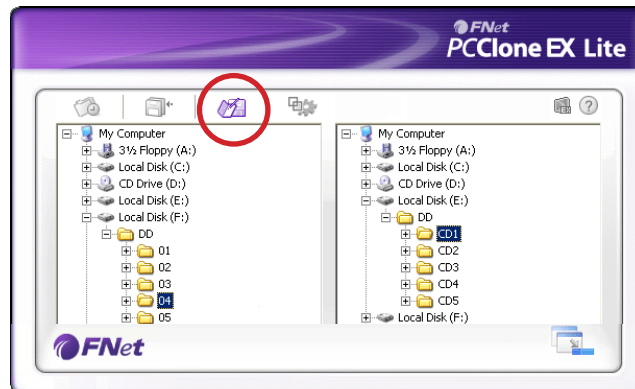


OPTION: To remove all files that have been backed up, you can simply select the root directory (FNet) folder, then right-click for the delete option.



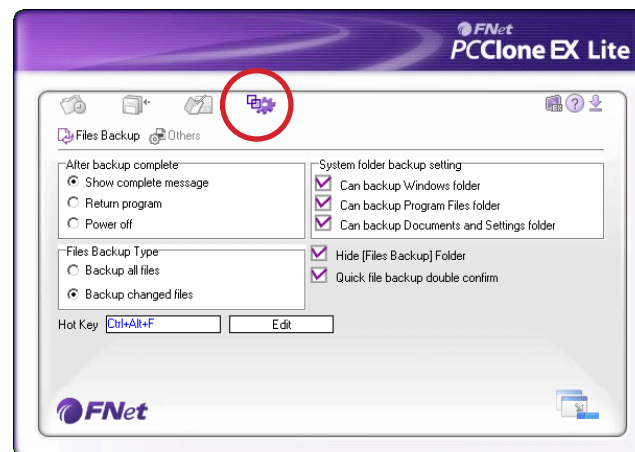
File Manager

File Manager allows files to be directly moved between two windows — the source device (File Backup on the left) and the backup drive (USB Device on the right).



File Backup Settings

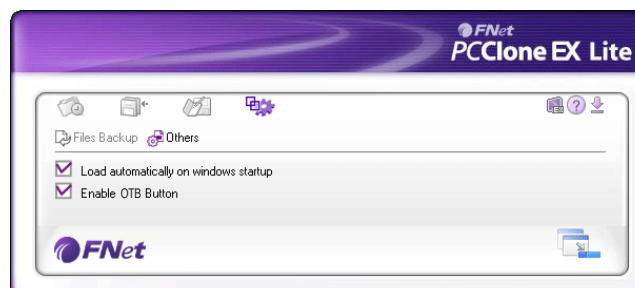
Select your preferences on this screen before you begin backing up files. Options include creating a hotkey: a single command used to initiate the backup function.



Other

Click to display two additional options:

- Automatically open the PC Clone EX program with Windows startup
- Enable the USB button



SPECIFICATIONS

Standards and Certifications

- USB 3.0 to SATA interface
- CE
- FCC
- WEEE
- RoHS

General

- ASM1051 chipset
- SATA 7P + 15P internal data and power connections
- USB 3.0 Standard-A to Micro-B cable, 100 cm (3.3 ft.)
- Working temperature: 0 – 45°C
- Metal case construction
- Integrated one-touch copy button and power/activity LED indicator
- 13.1 x 8.05 x 1.7 cm (5.16 x 3.17 x 0.67 in.)
- 133 g (4.7 oz.) without hard drive

System Requirements

- Available USB 3.0 Standard-A port
- Windows XP/Vista/7 and Mac OS 8.6 or later versions

Package Contents


- Drive Enclosure
- USB 3.0 cable; software CD with user manual; multilanguage quick install guide

WASTE ELECTRICAL & ELECTRONIC EQUIPMENT

Disposal of Electric and Electronic Equipment

(applicable in the European Union and other European countries with separate collection systems)

ENGLISH

This symbol on the product or its packaging indicates that this product shall not be treated as household waste. Instead, it should be taken to an applicable collection point for the recycling of electrical and electronic equipment. By ensuring this product is disposed of correctly, you will help prevent potential negative consequences to the environment and human health, which could otherwise be caused by inappropriate waste handling of this product. If your equipment  contains easily removable batteries or accumulators, dispose of these separately according to your local requirements. The recycling of materials will help to conserve natural resources. For more detailed information about recycling of this product, contact your local city office, your household waste disposal service or the shop where you purchased this product. *In countries outside of the EU:* If you wish to discard this product, contact your local authorities and ask for the correct manner of disposal.

DEUTSCH

Dieses auf dem Produkt oder der Verpackung angebrachte Symbol zeigt an, dass dieses Produkt nicht mit dem Hausmüll entsorgt werden darf. In Übereinstimmung mit der Richtlinie 2002/96/EG des Europäischen Parlaments und des Rates über Elektro- und Elektronik-Altgeräte (WEEE) darf dieses Elektrogerät nicht im normalen Hausmüll oder dem Gelben Sack entsorgt werden. Wenn Sie dieses Produkt entsorgen möchten, bringen Sie es bitte zur Verkaufsstelle zurück oder zum Recycling-Sammelpunkt Ihrer Gemeinde.

ESPAÑOL

Este símbolo en el producto o su embalaje indica que el producto no debe tratarse como residuo doméstico. De conformidad con la Directiva 2002/96/CE de la UE sobre residuos de aparatos eléctricos y electrónicos (RAEE), este producto eléctrico no puede desecharse con el resto de residuos no clasificados. Deshágase de este producto devolviéndolo a su punto de venta o a un punto de recolección municipal para su reciclaje.

FRANÇAIS

Ce symbole sur le produit ou son emballage signifie que ce produit ne doit pas être traité comme un déchet ménager. Conformément à la Directive 2002/96/EC sur les déchets d'équipements électriques et électroniques (DEEE), ce produit électrique ne doit en aucun cas être mis au rebut sous forme de déchet municipal non trié. Veuillez vous débarrasser de ce produit en le renvoyant à son point de vente ou au point de ramassage local dans votre municipalité, à des fins de recyclage.

ITALIANO

Questo simbolo sul prodotto o sulla relativa confezione indica che il prodotto non va trattato come un rifiuto domestico. In ottemperanza alla Direttiva UE 2002/96/EC sui rifiuti di apparecchiature elettriche ed elettroniche (RAEE), questo prodotto elettrico non deve essere smaltito come rifiuto municipale misto. Si prega di smaltire il prodotto riportandolo al punto vendita o al punto di raccolta municipale locale per un opportuno riciclaggio.

POLSKI

Jeśli na produkcie lub jego opakowaniu umieszczono ten symbol, wówczas w czasie utylizacji nie wolno wyrzucać tego produktu wraz z odpadami komunalnymi. Zgodnie z Dyrektywą Nr 2002/96/WE w sprawie zużytego sprzętu elektrycznego i elektronicznego (WEEE), niniejszego produktu elektrycznego nie wolno usuwać jako nie posortowanego odpadu komunalnego. Prosimy o usunięcie niniejszego produktu poprzez jego zwrot do punktu zakupu lub oddanie do miejscowego komunalnego punktu zbiórki odpadów przeznaczonych do recyklingu.

WARRANTY INFORMATION

ENGLISH: For warranty information, go to www.manhattan-products.com/warranty.

DEUTSCH: Garantieinformationen finden Sie unter www.manhattan-products.com/warranty.

ESPAÑOL: Si desea obtener información sobre la garantía, visite www.manhattan-products.com/warranty.

FRANÇAIS: Pour consulter les informations sur la garantie, visitez www.manhattan-products.com/warranty.

POLSKI: Informacje dotyczące gwarancji znajdują się na stronie www.manhattan-products.com/warranty.

ITALIANO: Per informazioni sulla garanzia, accedere a www.manhattan-products.com/warranty.

EN MÉXICO: Póliza de Garantía MANHATTAN — Datos del importador y responsable ante el consumidor IC Intracom México, S.A. de C.V. • Av. Interceptor Poniente # 73, Col. Parque Industrial La Joya, Cuautitlán Izcalli, Estado de México, C.P. 54730, México. • Tel. (55)1500-4500

La presente garantía cubre los siguientes productos contra cualquier defecto de fabricación en sus materiales y mano de obra.

- A. Garantizamos los productos de limpieza, aire comprimido y consumibles, por 60 días a partir de la fecha de entrega, o por el tiempo en que se agote totalmente su contenido por su propia función de uso, lo que suceda primero.
- B. Garantizamos los productos con partes móviles por 3 años.
- C. Garantizamos los demás productos por 5 años (productos sin partes móviles), bajo las siguientes condiciones:
 - 1. Todos los productos a que se refiere esta garantía, ampara su cambio físico, sin ningún cargo para el consumidor.
 - 2. El comercializador no tiene talleres de servicio, debido a que los productos que se garantizan no cuentan con reparaciones, ni refacciones, ya que su garantía es de cambio físico.
 - 3. La garantía cubre exclusivamente aquellas partes, equipos o sub-ensambles que hayan sido instaladas de fábrica y no incluye en ningún caso el equipo adicional o cualesquiera que hayan sido adicionados al mismo por el usuario o distribuidor.

Para hacer efectiva esta garantía bastará con presentar el producto al distribuidor en el domicilio donde fue adquirido o en el domicilio de IC Intracom México, S.A. de C.V., junto con los accesorios contenidos en su empaque, acompañado de su póliza debidamente llenada y sellada por la casa vendedora (indispensable el sello y fecha de compra) donde lo adquirió, o bien, la factura o ticket de compra original donde se mencione claramente el modelo, número de serie (cuando aplique) y fecha de adquisición. Esta garantía no es válida en los siguientes casos: Si el producto se hubiese utilizado en condiciones distintas a las normales; si el producto no ha sido operado conforme a los instructivos de uso; o si el producto ha sido alterado o tratado de ser reparado por el consumidor o terceras personas.

REGULATORY STATEMENTS

FCC Class B

This equipment has been tested and found to comply with the limits for a Class B digital device, pursuant to Part 15 of Federal Communications Commission (FCC) Rules. These limits are designed to provide reasonable protection against harmful interference in a residential installation. This equipment generates, uses and can radiate radio frequency energy, and if not installed and used in accordance with the instructions may cause harmful interference to radio communications. However, there is no guarantee that interference will not occur in a particular installation. If this equipment does cause harmful interference to radio or television reception, which can be determined by turning the equipment off and on, the user is encouraged to try to correct the interference by one or more of the following measures:

- Reorient or relocate the receiving antenna.
- Increase the separation between the equipment and the receiver.
- Connect the equipment to an outlet on a circuit different from the receiver.
- Consult the dealer or an experienced radio/TV technician for help.

CE / R&TTE

ENGLISH

This device complies with the requirements of the R&TTE Directive 1999/5/EC.

DEUTSCH

Dieses Gerät entspricht der Direktive R&TTE Direktive 1999/5/EC.

ESPAÑOL

Este dispositivo cumple con los requerimientos de la Directiva R&TTE 1999/5/EC.

FRANÇAIS

Cet appareil satisfait aux exigences de la directive R&TTE 1999/5/CE.

POLSKI

Urządzenie spełnia wymagania dyrektywy R&TTE 1999/5/EC.

ITALIANO

Questo dispositivo è conforme alla Direttiva 1999/5/EC R&TTE.



MANHATTAN® offers a complete line of PC Components,
Peripherals, Cables and Accessories. Ask your local computer dealer for more information
or visit www.manhattan-products.com.

All products mentioned are trademarks or registered trademarks of their respective owners.

MANHATTAN® bietet ein vollständiges Sortiment an PC-Komponenten, Peripherie, Kabel und
Zubehör. Weitere Informationen erhalten Sie von Ihrem Händler oder auf
www.manhattan-products.com.

Alle genannten Produkt- oder Firmennamen sind eingetragene Marken oder Marken der
jeweiligen Firmen.

MANHATTAN® ofrece una línea completa Componentes para PC, Periféricos, Cables y
Accesorios. Consulte a su distribuidor local para más información ó visitenos
www.manhattan-products.com.

Todos los productos mencionados son marcas comerciales o marcas registradas de sus
respectivos propietarios.

MANHATTAN® offre un assortiment complet de composants de PC, des périphériques,
des câbles et des accessoires
www.manhattan-products.com.

Tous les produits mentionnés sont des marques commerciales ou des marques déposées
de leurs propriétaires respectifs.

MANHATTAN® to kompletna linia Komponentów PC, Peryferiów, Kabli oraz Akcesoriów.
Poproś lokalnego dealera o więcej informacji lub odwiedź stronę
www.manhattan-products.com.pl.

Wszystkie nazwy handlowe i towarów są nazwami i znakami towarowymi
zastrzeżonymi odpowiednich firm odnośnych właścicieli.

MANHATTAN® offre una linea completa di componenti per PC, periferiche, cavi e accessori.
Chiedi maggiori informazioni al tuo rivenditore di computer o visita il sito
www.manhattan-products.com.

Tutti i prodotti sopracitati sono marchi di fabbrica o marchi registrati depositati dai proprietari.

