



Cat6a 10G 48-Port Patch Panel, 1U

19-inch Rackmount Panel for High-density Installations, UTP, 180° Entry Punch-Down Blocks, for Solid Wire, Gold-plated Contacts, Black

SKU: 720526 | EAN-13: 0766623720526 | UPC: 766623720526

48-Port Cat6a 19-inch Rack Mount Patch Panel for 10G High-Density Installations - Maximize Connectivity in Minimal Space

With its slim 1U installation height, this Cat6a 48-Port Patch Panel from Intellinet Network Solutions provides you with more connectivity options in limited rack space. It is designed to support modern high-performance networks with dependable 10 Gigabit Ethernet capability. Compliant with Cat6A Class EA requirements and supporting frequencies up to 500 MHz, it meets key international standards including ISO/IEC 11801, IEC 60603-7-51, and ANSI/TIA-568-D. This ensures consistent signal integrity and future-ready infrastructure for demanding data environments.

Efficient and Installer-Friendly Cable Termination

Equipped with 48 RJ45 ports, it enables structured and organized cable management. The 180° straight IDC punch-down blocks allow for easy and intuitive cable termination, particularly in installations where accessibility is important. Compatibility with both 110 and Krone punch-down tools provides flexibility for installers, while support for 23 to 26 AWG solid wire ensures broad application compatibility.

Durable Construction and High-Quality Materials

Built from sturdy, cold-rolled SPCC steel and finished with an antistatic powder coating, this patch panel is engineered for long-term durability in professional environments. The gold-plated contacts (50 micro-inch) provide corrosion resistance and reliable conductivity with stable connections even in demanding conditions.

Flexible Installation and Clean Cable Management

The integrated, removable cable management bar allows for neat and adaptable cable routing, simplifying both initial installation and future maintenance. Designed to IEC 60297 and EIA 310 standards, the panel fits seamlessly into all standard 19-inch (482.6 mm) racks, making it a versatile solution for a wide range of installations.

Optimized for Modern Network Applications

This unshielded (UTP) patch panel is ideal for high-speed data and power applications, including support for PoE technologies up to IEEE 802.3bt (PoE++, 4PPoE, Ultra PoE). Its standard 8P8C design ensures full compatibility with all RJ45 network connections, while color-coded wiring supports both T568A and T568B configurations for maximum deployment flexibility.

Features:

- Cat6a Class EA with 10G and 500 MHz in accordance with ISO/IEC 11801, IEC 60603-7-51, and ANSI/TIA-568-D
- 48 ports using only 1U of rack space for high-density installations
- Numbered and labeled RJ45 ports with 180° straight IDC terminals for easy cable termination
- 50 micro-inch gold-plated contacts for corrosion-free connections
- Supports 23 to 26 AWG solid wire
- Compatible with both 110 and Krone punch-down tools
- Sturdy, high-quality, cold-rolled SPCC steel construction with antistatic powder coating
- Removable cable-management bar
- IEC 60297 / EIA 310-compliant; compatible with all standard 19 in. / 482.6 mm racks
- Ideal for 10G and PoE applications up to IEEE802.3bt / PoE++ / 4PPoE / Ultra PoE
- For use with unshielded twisted pair (UTP) Cat6a cable
- Standard 8P8C design, compatible with all network RJ45 connections
- Compatible and color-coded with T568A and T568B
- Fully backward compatible with all the previous cable categories, including Category 6, 5e and 5
- UL listed
- 10 cable ties included
- Fully NDAA-compliant
- Lifetime warranty

Specifications:

Standards and Certifications

- UL
- ISO/IEC 11801

For more information on Intellinet products, consult your local dealer or visit www.intellinet-network.com.

All names of products or services mentioned herein are trademarks or registered trademarks of their respective owners. Distribution and reproduction of this document, and use and disclosure of the contents herein, are prohibited unless specifically authorized.

- IEC 60603-7-51
- ANSI/TIA-568-D
- CE
- RoHS
- REACH
- UKCA

General

- Supports transfer speeds up to 10 Gbps
- Max. operating frequency: 500 MHz
- Supports all PoE standards up to IEEE802.3bt / PoE++ / 4PPoE / Ultra PoE
- Mating cycles: ≥ 750
- IDC mating cycles: ≥ 20

Material

- Frame and bracket: SPCC steel, powder-coated
- Contacts: phosphor bronze
- Contact plating: 50 micro-inch gold
- IDC: phosphor bronze with tin plating
- Flammability:
 - PCB: tested and rated in accordance with FR-4 and UL 94 V-0

Electrical

- Insulation resistance: ≥ 500 MOhm
- Dielectric withstanding voltage: 1,000 V DC/750 V AC
- Contact resistance: ≤ 20 mOhm
- DC resistance: ≥ 0.3 Ohm
- Current rating: 1.5 A

Physical

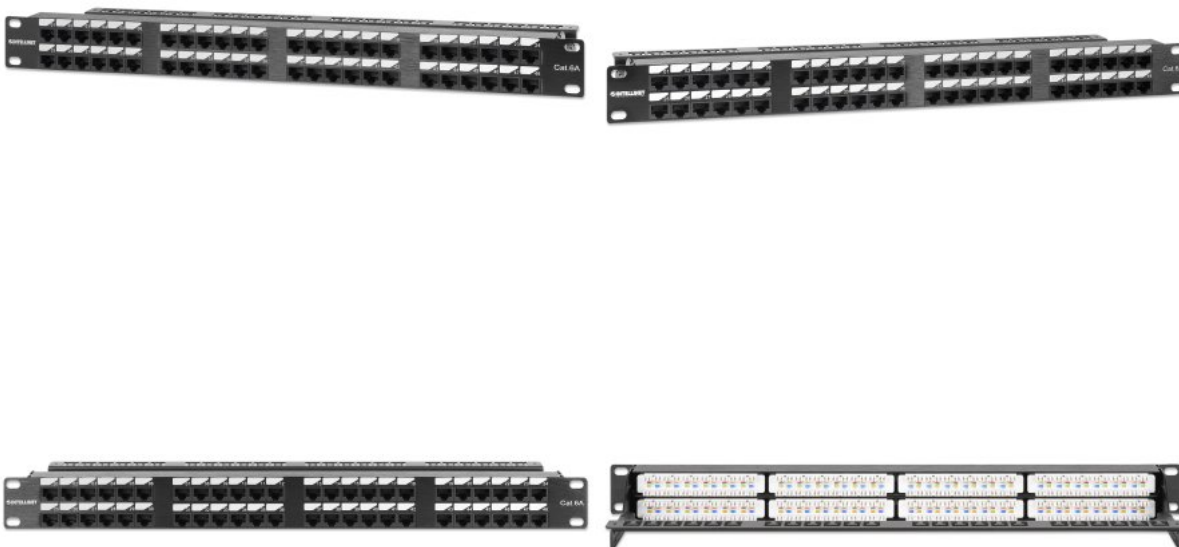
- Dimensions (D x W x H): 127 x 482.6 x 44.4 mm (5 x 19 x 1.75 in.)
- Net weight: 760 g (1.68 lbs.)
- Gross weight: 870 g (1.92 lbs.)

Environmental

- Operating temperature: -10 to 60°C (14 to 140°F)
- Storage temperature: -40 to 70°C (-40 to 158°F)
- Operating humidity (non-condensing): 10 - 90% RH

Package Contents

- Cat6a Unshielded 19 inch 48-Port Patch Panel, 1U
- 10 x cable tie
- Instructions



For more information on Intellinet products, consult your local dealer or visit www.intellinet-network.com.

All names of products or services mentioned herein are trademarks or registered trademarks of their respective owners. Distribution and reproduction of this document, and use and disclosure of the contents herein, are prohibited unless specifically authorized.

