

BLUETOOTH ADAPTER / MICRO ADAPTER QUICK INSTALL GUIDE

MODELS 179010, 179058,
179201 & 179218

Thank you for your purchase of the MANHATTAN® Bluetooth Adapter, Model 179010 (100m) or 179058 (20m); or Bluetooth Micro Adapter, Model 179201 (50m) or 179218 (10m).

Adding Bluetooth capability to any notebook or desktop PC with a USB port, this device helps create ad hoc networks to share files and resources without adding wires, cables or costly equipment. (Instructions on back.)

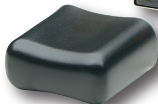
Micro Adapter Models 179201 & 179218



- Piconet and scatternet compatible
- Built-in security (with a protective cover on 179010 & 179058)
- Micro Adapter stays installed during transport
- Plug and Play installation; Windows compatible
- Lifetime Warranty



Adapter Models
179010 & 179058



SPECIFICATIONS

Standards/Certifications

- Hi-Speed USB 2.0, CE, FCC, Bluetooth v2.1 + EDR

Radio

- Freq. range: 2.4–2.483 GHz
- Data rate: up to 3 Mbps
- Range:
 - 179010: to 100 m (328')
 - 179058: to 20 m (65.6')
 - 179201: to 50 m (164')
 - 179218: to 10 m (32.8')

- Modulation type: GFSK (1 Mbps); D/4-DOPSK (2 Mbps); 8DPSK (3 Mbps)
- Spread spectrum: FHSS
- I/O interface: Hi-Speed USB 2.0
- Input power: 5 V (USB power)
- Sensitivity: -82 dBm (typical), GFSK
- RF output power: 13 dBm (typical), GFSK

Supported Profiles

- See back of sheet

Physical

- Chipset
 - 179010/179058: ISSC
 - 179201/179218: CSR
- Built-in antenna
- LED activity indicator (179201/179218 only)
- Dimensions:
 - 179010/179058: 51 x 16 x 8 mm (2.0 x 0.6 x 0.3 in.); 5.7 g (0.2 oz.)
 - 179201/179218: 19 x 12 x 5.5 mm (0.75 x 0.5 x 0.2 in.); 1.8 g (0.68 oz.)

- 179201/179218: 19 x 12 x 5.5 mm (0.75 x 0.5 x 0.2 in.); 1.8 g (0.68 oz.)

System Requirements

- Windows 2000/XP/Vista/7
- Available USB port

Package Contents

- Bluetooth Adapter or Bluetooth Micro Adapter
- Driver/software CD
- Quick install guide


MANHATTAN
BRINGING COMPUTERS TO LIFE

MANHATTAN® offers a complete line of PC Components, Peripherals, Cables and Accessories. Ask your local computer dealer for more information or visit us online at

www.manhattan-products.com

Copyright © MANHATTAN

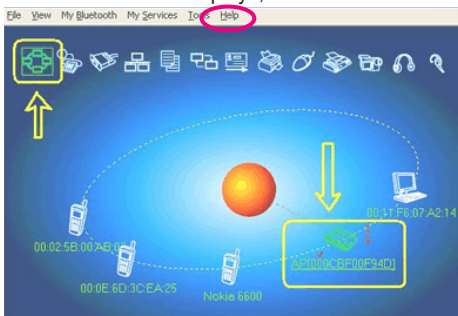
All products mentioned are trademarks or registered trademarks of their respective owners.

MH-179010/179058/179201/179218-QIG-0408-03

BASIC INSTALLATION

Below is the basic software installation procedure. *For detailed information on the use of the applications, refer to the software Help file.*

1. Click “setup.exe” to start the installation.
2. Choose the setup language from the drop-down menu; click “OK.”
3. Follow the on-screen instructions displayed by the Install Wizard.
4. When prompted with a “Restart your system” message, click “Yes.”
5. Connect the Bluetooth Adapter to a USB port on the computer.
6. Start up BlueSoleil: On the desktop, go to Programs, then IVT Bluesoleil, then Bluesoleil.
7. When the “Version Information” window displays, click “OK.”
8. When the BlueSoleil main screen displays, click the orange ball in the middle of the screen to start searching for any Bluetooth devices, which, when found, are displayed as device icons “orbiting” the ball.



9. Double-click on a device icon to browse its service. **NOTE:** In some cases, you need to establish a “trusted” relationship between BlueSoleil and the remote device by inputting the same password on both sides. On the BlueSoleil side, enter a password in the “Passkey” field when the “Enter Bluetooth Passkey” window displays.
10. After the pairing procedure succeeds, a check mark appears beside the device icon and available service icons will be highlighted.
11. Click one of the highlighted service icons and BlueSoleil will establish a Bluetooth connection to the remote device. The device icon changes to green and a line appears between the ball and the device icon.

Supported Profiles

- Serial Port, Dial-Up Networking, File Transfer, Human Interface Device, Hardcopy Cable Replacement, Headset, Object Push, Synchronization
- Windows-only Profiles: FAX, Personal Area Networking, LAN Access, Advanced Audio Distribution, Audio Video Remote Control, Basic Imaging