

Universal Flat-Panel TV Articulating Wall Mount

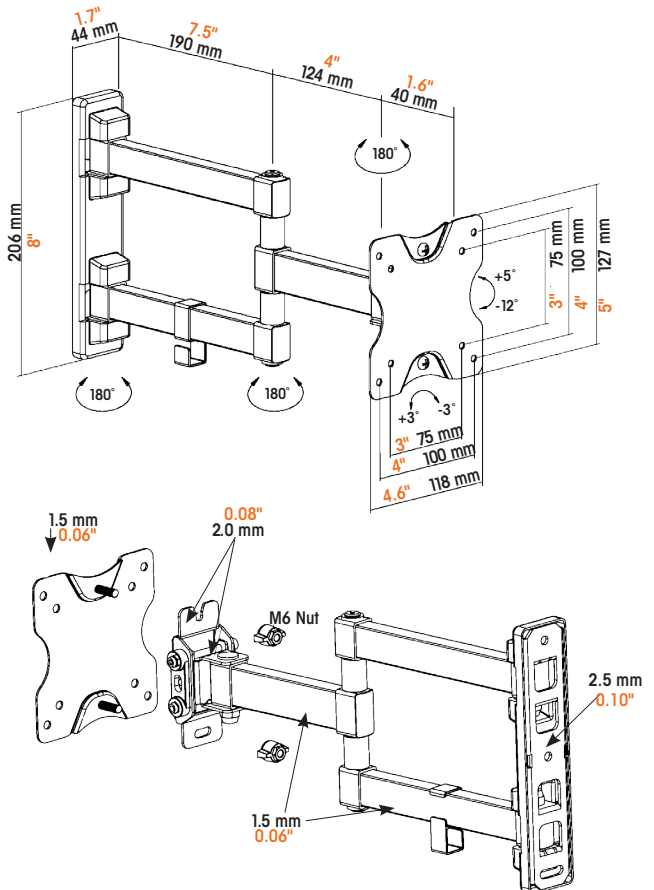


REACH OUT FOR A BETTER VIEW

44 lbs / 20 kg
Holds Up To 44 lbs. (20 kg)

13" - 27"
Holds One 13"-27" TV

 **-12° to +5° tilt,
±90° swivel**



- Securely holds one flat-panel television
- Steel construction
- Easy installation ideal for home, office and commercial applications
- Meets VESA standards: 75 x 75 or 100 x 100