

Visualizing Quality Control with Manhattan Mounts

Universal Flat-Panel TV Articulating Wall Mount

Model #460965



FOCUS ON THE TV INSTEAD OF THE MOUNT

15kg

Holds Up To 15 kg (33 lbs.)

13" - 27"

Holds One 13" - 27" TV

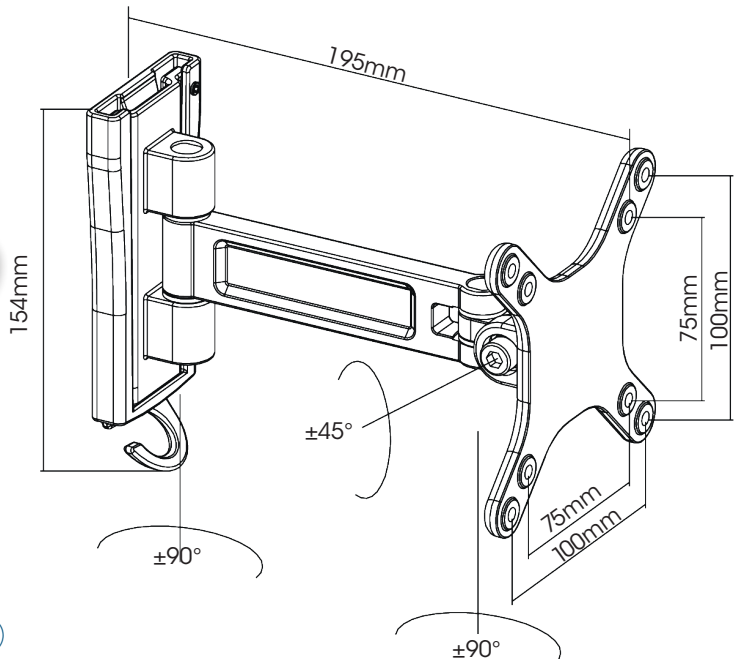


±45° tilt and
90° swivel

Adjustable Tilt and Swivel



Cable Management



- Optimize views with ±45° tilt and ±90° swivel adjustments
- Durable aluminum construction
- Built-in cable management system and integrated bubble level
- Meets VESA standards 75x75, 100x100
- Supports TVs from 13" to 27" up to 15 kg (33 lbs.)



For more information, visit
manhattanproducts.com