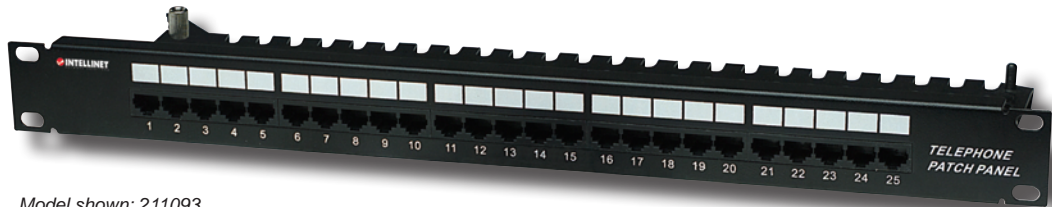


PATCH PANEL QUICK INSTALL GUIDE



Model shown: 211093



INT-PATPAN2-GIG-0609-01

Thank you for purchasing this INTELLINET NETWORK SOLUTIONS™ 19" Patch Panel, one of a series of easy-to-use panels that let you consolidate your network cables to reduce clutter.

Whether you have selected a model for use with unshielded twisted pair (UTP) or fully shielded, from 12-port to 96-port, you'll appreciate the benefits of convenience and reliability delivered by these quality features.

- Printed circuit design to provide high performance and flexible application
- Compatible with 110 punch-down tools
- High carbon steel outer frame with plastic powder cladding
- Integrated back cable management provides an organized installation
- Meets 19" rackmount standards
- Lifetime Warranty

The images on the following pages of this guide show you the basic installation procedures for connecting your patch panel to your computer cables.

NOTE: The images on the following pages are representative of patch panels in various INTELLINET NETWORK SOLUTIONS series.



Front view

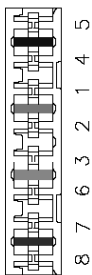
Rear view

NOTE: These images are representational of INTELLINET NETWORK SOLUTIONS patch panels and depict the basic design of various series.



Step 1

At the end of each cable to be connected to the patch panel, strip away 25–30 mm (approx. 1") of the outer jacket, then separate the inner leads into four (4) pairs.



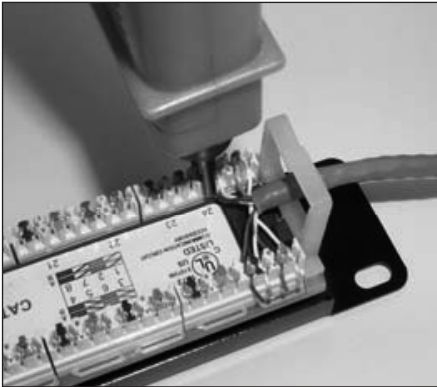
110D
type

Color-Coding Reference

T568A		T568B	
Pin 5	White/Blue	Pin 5	White/Blue
Pin 4	Blue	Pin 4	Blue
Pin 1	White/Green	Pin 1	White/Orange
Pin 2	Green	Pin 2	Orange
Pin 3	White/Orange	Pin 3	White/Green
Pin 6	Orange	Pin 6	Green
Pin 7	White/Brown	Pin 7	White/Brown
Pin 8	Brown	Pin 8	Brown

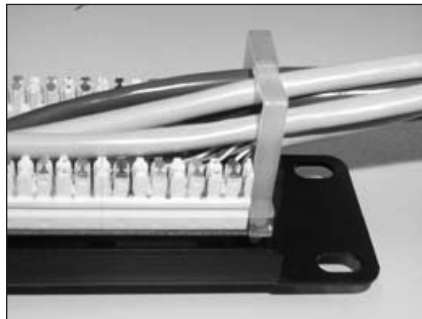
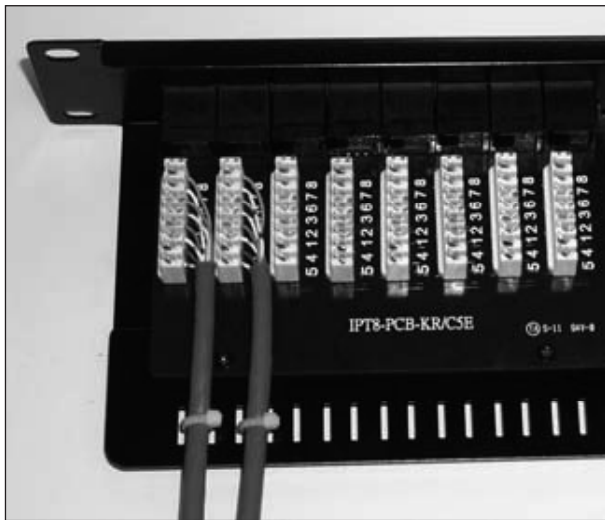
Step 2

Using the IDC color-coding reference (see previous page), position each T568A or T568B wire, then connect each wire to the patch panel using a punch-down tool as shown below.



Step 3

Place each cable in its associated holder (as shown below) to keep them neatly organized, then place/position the patch panel as desired.



Specifications

Standards & Certifications

- TIA/EIA 568A/B
- ISO/IEC 11801
- CE certified
- ROHS compliant

General

- 1U
- Ports:
 - Model 211093: 25 x RJ45 UTP
 - Model 211109: 50 x RJ45 UTP
- Supports 22 to 24 AWG wire
- LSA-Plus-type IDC

Environmental

- Dimensions: 44 (H) x 483 (W) x 145 (D) mm (1.7 x 19 x 5.7 in.)
- Horizontal distance between left and right mounting holes: 463 mm (18.2 in.)

- Vertical distance between top and bottom mounting holes: 32 mm (1.26 in.)
- Weight:
 - Model 211093: 1.19 kg (2.6 lbs.)
 - Model 211109: 1.32 kg (2.9 lbs.)

Package Contents

- Cat3/ISDN Patch Panel
- Grounding wire
- 4 Mounting screws
- Cable ties
 - Model 211093: 25
 - Model 211109: 50
- 110-type impact tool



INTELLINET NETWORK SOLUTIONS™ offers a complete line
of active and passive networking products.

Ask your local computer dealer for more information or visit

www.intellinet-network.com.

Copyright © INTELLINET NETWORK SOLUTIONS

All products mentioned are trademarks or registered trademarks of their respective owners.