

# Stereo to Composite Audio Cable

## 3.5 mm Stereo to Dual-Cinch RCA, Blue

**High-quality connections that provide superior performance.**

MANHATTAN Premium Audio/Visual Cables can connect HD TVs, projectors and flat-panel displays, PC and audio components and more to deliver crisp, clear, error-free transmissions. Precisely engineered and constructed of quality materials, including full foil and braided shielding, gold-plated contacts, nylon mesh jackets and custom-molded boots with strain relief, MANHATTAN Premium Audio/Visual Cables help ensure maximum conductivity, minimal degradation and the highest performance from connected devices.

Model	Length	Cable Diameter
<b>317771</b>	1.5 m (5 ft.)	26 AWG
<b>317795</b>	3.0 m (10 ft.)	26 AWG
<b>361217</b>	1.5 m (5 ft.)	26 AWG
<b>361224</b>	3.0 m (10 ft.)	26 AWG

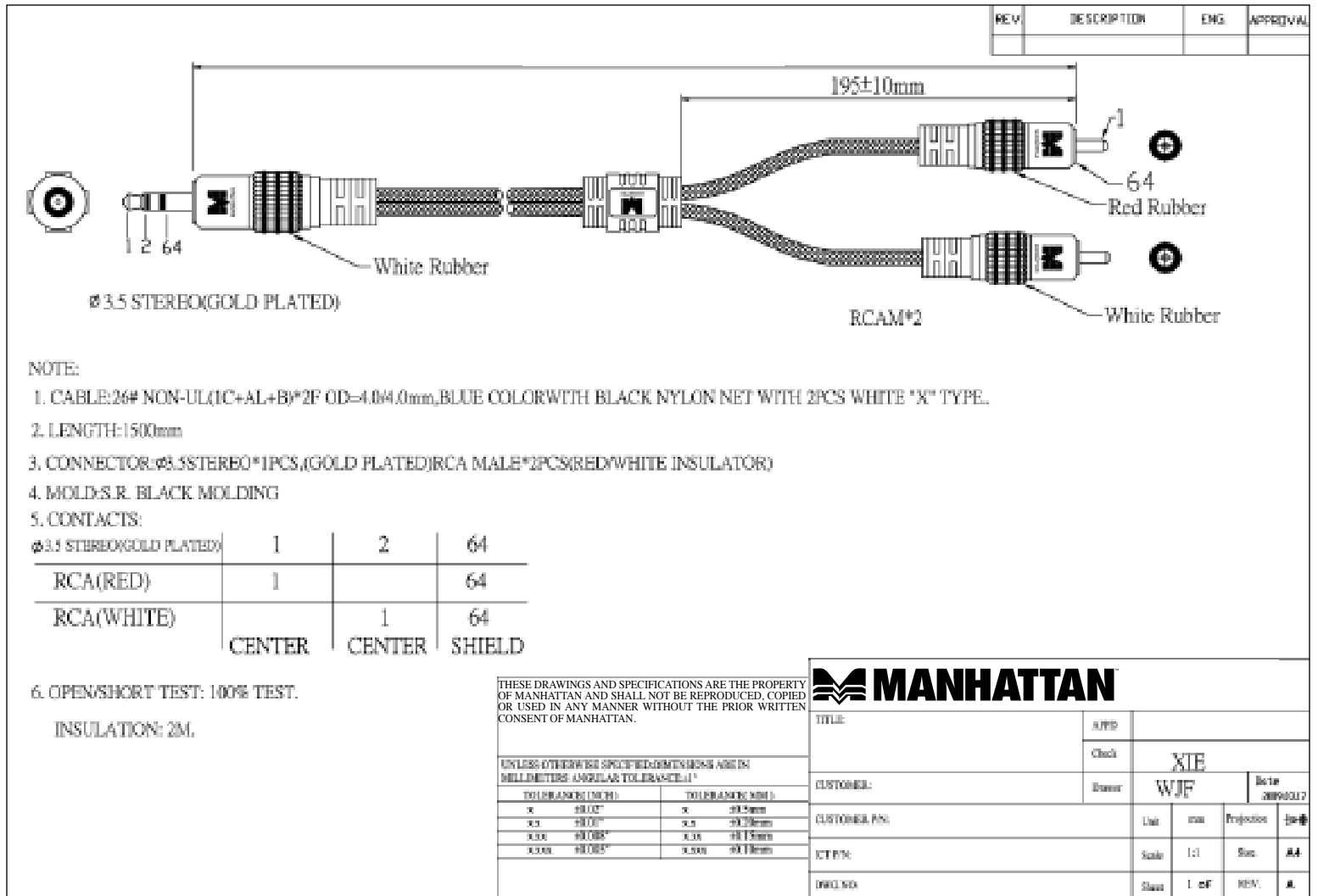
### Lifetime Warranty

Strict manufacturing standards ensure the highest quality in all MANHATTAN products. All items carry a full Lifetime Warranty — the strongest quality commitment anyone can make.

**Model**  
317771  
317795  
361217  
361224



# Technical Drawing



## Features

- 3.5 mm stereo to dual-cinch RCA
- Heavy-gauge cable with nylon mesh protective jacket
- Corrosion-resistant gold-plated contacts for best data transmission
- Heavy-duty strain relief
- Lifetime Warranty

## Specifications

### CONTACTS

- (1) 3.5 mm stereo male to (2) RCA male connections
- Gold plated
- Molded PVC boot
- Built-in strain relief

### CABLE

- Withstanding voltage: 300 V DC
- Thermal plastic and nylon braid casing
- Foil and braided shielding
- Dimensions: See Length & Diameter, P.1

### PACKAGE CONTENTS

- Stereo to Composite Audio Cable

For more information on MANHATTAN products, consult your local dealer or visit [www.manhattan-products.com](http://www.manhattan-products.com).



Copyright © MANHATTAN

