

EXTENDED RANGE  
WIRELESS G USB ADAPTER

**QUICK INSTALL GUIDE**

# SOFTWARE INSTALLATION

Example : Windows XP SP2

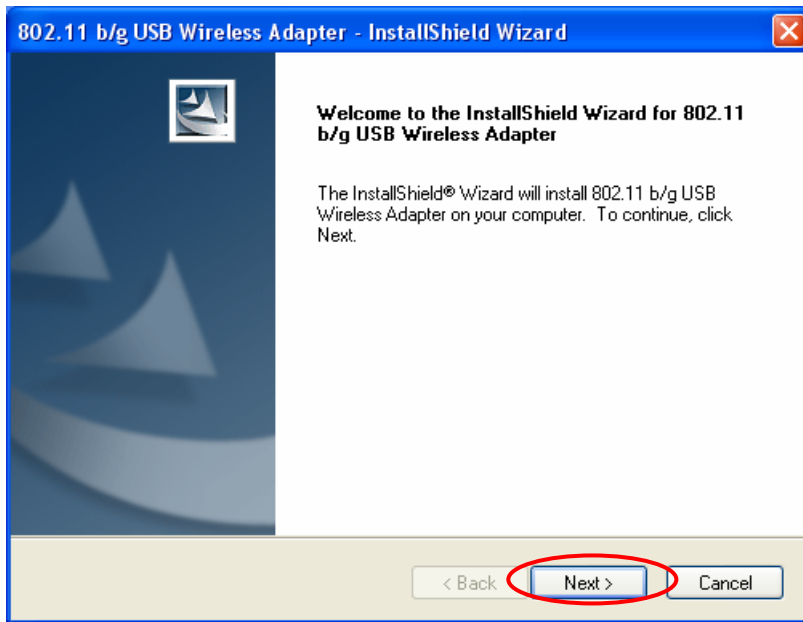
1. Insert the Wireless Adapter into an available USB slot, and click **Cancel** when the **Found New Hardware Wizard** screen appears.



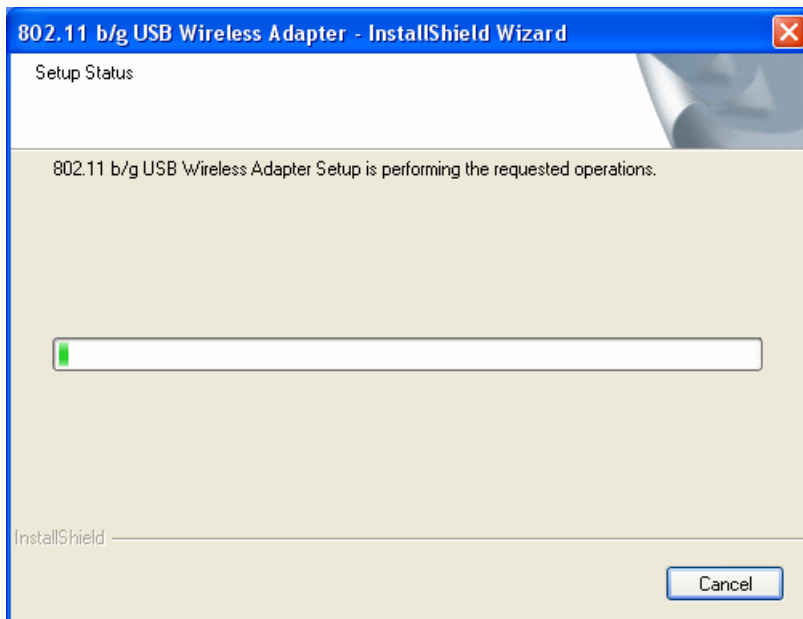
2. Insert *Wireless Adapter Installation and User's Manual* CD into your CD-ROM, then the installation will be activated automatically. Click the **Driver Install** icon to begin the installation.



3. On the 802.11 b/g USB Wireless Adapter screen, click **Next** to accept the InstallShield Wizard for driver installation.



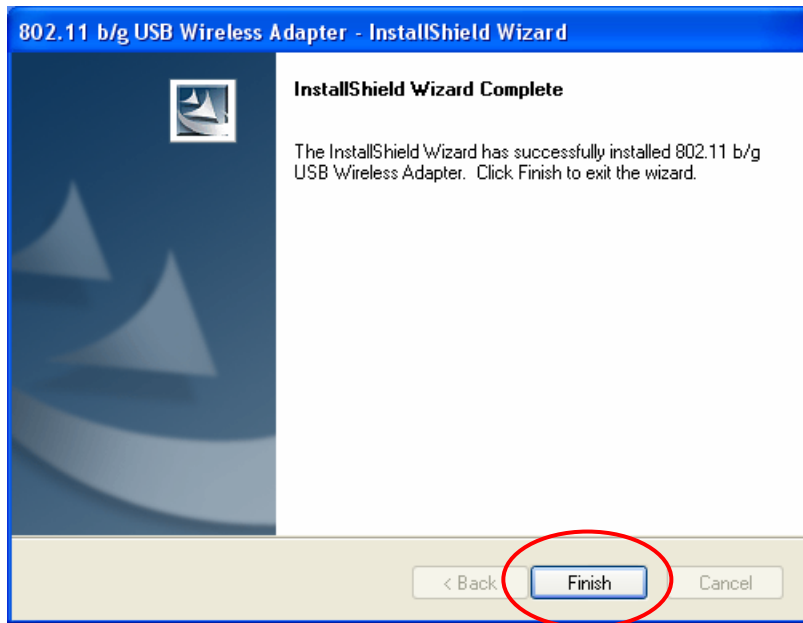
4. **802.11 b/g USB Wireless Adapter Setup** begin the installation.



5. Wireless Adapter Driver and Utility are installing.



6. The installation is now complete, please click **Finish**.



◆ Please refer to User's Manual if you are not running Windows XP.