

# eSATA, 3.5" EXTERNAL ENCLOSURE USER MANUAL

MODEL 700504



 **MANHATTAN**

MAN-700504-UM-0407-02

Thank you for purchasing the MANHATTAN® eSATA, 3.5" External Enclosure, Model 700504. Fully SATA-capable and equipped with eSATA I-type ports, the chipset-free design quickly transfers data without conversion between SATA-enabled systems. Just install an idle, unused drive to create new and productive storage solutions. Additional features:

- Supports SATA data transfer rates of up to 3 Gbps
- Lightweight, compact design ideal for portable storage
- Sturdy aluminum case protects drive and facilitates cooling
- Fits standard 3.5" SATA drives with easy, quick installation and rear-mount power switch
- Windows and Macintosh compatible, Plug and Play, hot swappable
- Lifetime Warranty

Package contents:

- External Enclosure with mounting screws
- eSATA I-type to I-type flat cable, 77 cm (30 in.)
- 12 V / 2 Amp power adapter, 1.2 m (4 ft.)
- User manual

System requirements:

- eSATA-enabled PC or Macintosh
- Available eSATA port
- Windows Me/2000/XP/Vista or Mac OS 10.x and above

## HARDWARE INSTALLATION

*NOTE:* Images are representational. Some switches/connectors may be positioned differently.



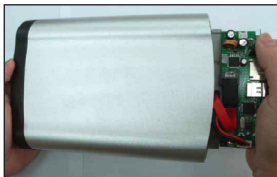
1. Open the enclosure.



2. Connect the power and SATA cables to the HDD.



3. Tighten the sides screws to secure the HDD.



4. Slide the connected hard disk drive inside the external enclosure.



5. Replace and tighten the two retaining screws to secure the rear panel.

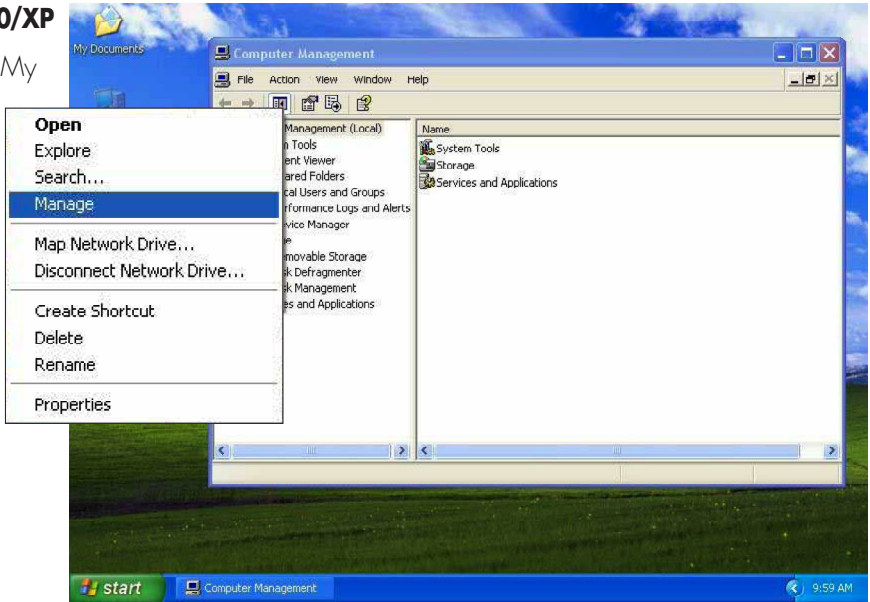


6. Connect the external cables.

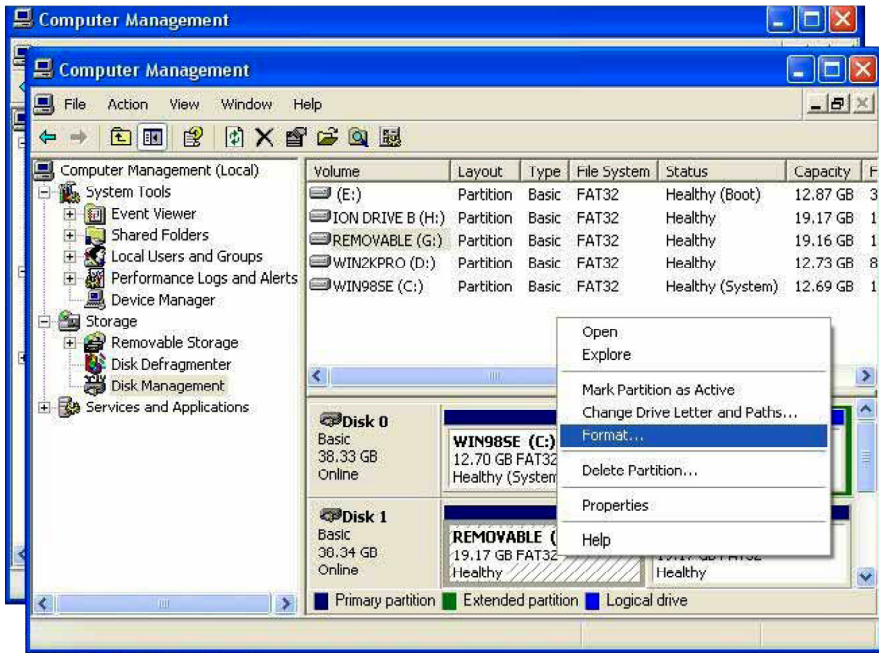
# SOFTWARE INSTALLATION

## Windows 2000/XP

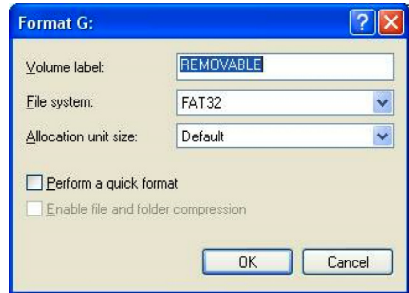
1. Click on the My Computer icon, then click "Manage" to initialize the hard disk drive.



2. Click "Disk Management," then click "Removable Disk," then click "Format."



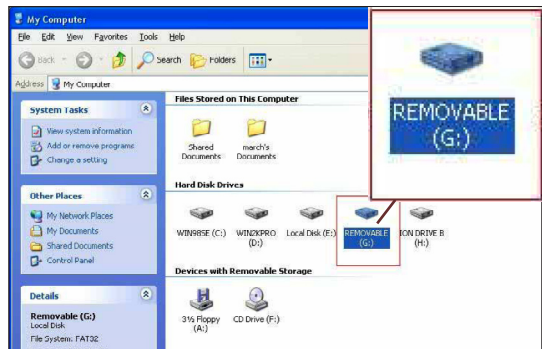
3. Confirm that "Removable" and "FAT32" are entered/selected in the "Volume label" and "File system" fields, respectively. Click "OK."



4. When the warning prompt appears, click "OK."



5. Click "My Computer" to confirm the new "Removable" icon appears. The External Enclosure with HDD is now ready for use.



## SPECIFICATIONS

- SATA L-type internal data & power connections
- eSATA L-type external connections
- DC single-post power input (AC adapter included)
- 22 x 14 x 3.5 cm (8.75 x 5.5 x 1.25 in.)
- 448 g (15.8 oz.)



**[www.manhattan-products.com](http://www.manhattan-products.com)**

Are you completely satisfied with this product?  
Please contact your MANHATTAN® dealer with comments or questions.

Copyright © MANHATTAN

All products mentioned are trademarks or registered trademarks of their respective owners.