



Mini Speed-Dome Camera

MPEG4/M-JPEG, CCD, Day/Night, Audio, PAL

For your most critical video surveillance applications.

Model
550451

The INTELLINET NETWORK SOLUTIONS™ Mini Speed-Dome Camera is the ideal solution for your demanding security surveillance and remote monitoring applications. It can be used for day or night viewing, and comes in a rugged tamper- and vandal-proof housing made out of aluminum. Its ultra-compact design makes it one of the smallest speed dome cameras money can buy.

Powerful PTZ Functions

The Mini Speed-Dome Camera provides 10x optical zoom capability, making it ideal for security surveillance. Thanks to its Vector Drive technology, panning, tilting and changing preset positions is lightning fast! You can manually adjust the pan and tilt speed from a blazing-fast 360° per second to an incredibly fine 0.05° per second, making precision PTZ control a breeze.

Privacy Masking

In response to growing concerns over privacy violations by network cameras and a stricter enforcement of data protection laws across the globe, our Speed-Dome Camera is equipped with a Privacy Masking feature. Privacy Masking allows blanking (censoring) certain areas of the video image. A total of four zones can be defined. Privacy Masking is often a mandatory function for all cameras to be installed in public places, or for production facilities to protect the privacy of the work force.

Superior Video Quality

The Mini Speed-Dome Camera uses a Sony Super HAD CCD image sensor, providing TV-like quality in bright or low light conditions, capturing color video in light conditions down to 0.7 lux and black-and-white video down to 0.2 lux. It supports both Motion-JPEG and MPEG4 video compression simultaneously, allowing you to use the right one for your particular needs. Motion-JPEG is required as evidence in many countries, whereas MPEG4 is a lot more efficient in the use of network bandwidth and disk storage space.

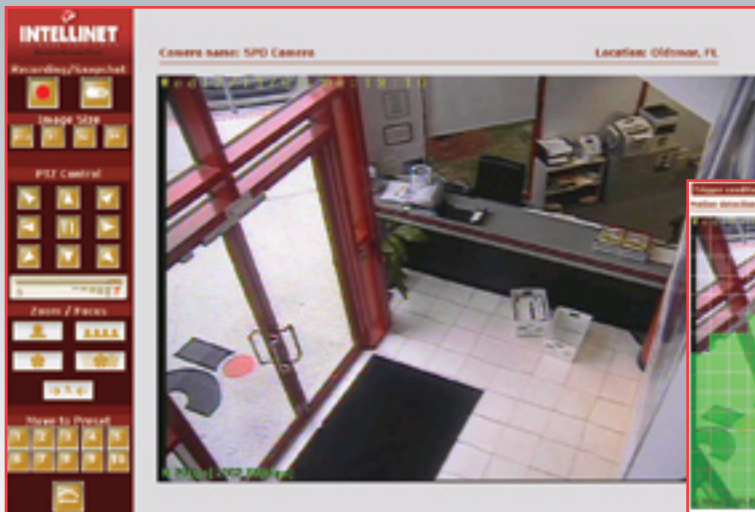
Flexible Control

As rugged as it is, the Mini Speed-Dome Camera provides a precision-engineered 360°/second pan operation which can be configured to patrol (continuous panning) using the preset function. It includes integrated motion detection that automatically disengages to prevent false alarms, and includes a "grid setup" function which is typically only available with video recording software.

Lifetime Warranty

Strict manufacturing standards ensure the highest quality in all INTELLINET NETWORK SOLUTIONS products. All items carry a full Lifetime Warranty — the strongest quality commitment anyone can make.





Web browser live view



Motion detection grid



Model
550451

Features

- Small & discreet
- Vandal-proof housing made of aluminum & dome glass made of polycarbonate
- 1/4" SONY Super HAD CCD image sensor for excellent image quality
- 10x optical zoom module with auto-focus & 10x digital zoom (total 100x zoom)
- Audio support: bi-directional (ADPCM)
- Pan/Tilt speed of 360° per second
- 360°/second endless panning
- Vector Drive technology provides simultaneous panning & tilting, ensuring the fastest path from one preset position to another
- 20 programmable preset positions
- 20-step guard tour, programmable
- Supports four privacy zones
- Engages black-&-white mode automatically below 0.7 lux
- Supports image resolutions up to 720 x 576 (D1)
- Up to 30 frames per second in all image resolutions
- Supports simultaneous MPEG4 & Motion-JPEG image compression
- Supports MPEG4 video streaming with CBR (constant bit rate) & VBR (variable bit rate) modes
- Controllable frame rate
- Integrated motion detection with pre- & post-alarm video buffering
- Motion detection grid featuring 300 individual detection areas which can be activated or deactivated individually
- Event-triggered FTP & e-mail upload of videos
- Terminal block for external sensors or external alarm devices
- Video access through any standard Web browser
- Mouse-wheel zooming & mouse-click panning and tilting
- Integrated HTTP Web server supporting 50 simultaneous user connections
- Integrated E-Mail, FTP, DDNS & DHCP client
- Extensive HTTP API for software integration & remote programming operations
- Includes Windows-based camera manager software (IP installation and upgrade)
- Includes 4-channel viewing & recording utility
- Lifetime Warranty

Specifications

STANDARDS

- IEEE 802.3 (10Base-T Ethernet)
- IEEE 802.3u (100Base-TX Fast Ethernet)

GENERAL

- Supported image resolutions: 720 x 576, 640 x 576, 720 x 288, 640 x 288, 352 x 288, 176 x 144
- Protocols supported: HTTP, TCP, UDP, SMTP, UDP, FTP, ARP, DNS, DynDNS
- Certifications: FCC Class A, CE, RoHS compliant

IMAGE SENSOR AND LENS

- 1/4" SONY Super HAD CCD sensor
- Total pixels: 470K, 795 (H) x 596 (V)
- Horizontal resolution: 500 TV lines (color), 570 TV lines (B/W)
- S/N ratio: more than 50 dB
- Video output: 1.0 Vp-p (75 Ohms, composite)
- Automatic white balance control
- Image control, brightness, contrast, saturation, hue
- Minimum illumination: 0.7 color / 0.2 lux (B/W) at 50 IRE
- Shutter speed: 1/120 - 1/120,000 sec.
- Focal length 3.8 - 38 mm
- Maximum relative aperture F1.8
- Pan rotation angle: 360°
- Tilt: 180° (Auto-Flip on), 95° (Auto-Flip Off)
- Angle of view:
 - Horizontal: 58.2° (Wide) to 5.58° (Zoom)
 - Vertical: 39.3° (Wide) to 4.27° (Zoom)

ENVIRONMENTAL

- Dimensions:
 - Dome: 115 mm (4.5 in.)
 - Housing: 147.5 x 141 mm (5.8 x 5.6 in.)
- Weight: 1.2 kg (2.6 lbs.)
- Operating temperature: 0 - 40°C (32 - 104°F)
- Operating humidity: 20 - 90% RH, non-condensing
- Storage temperature: 0 - 60°C (0 - 149°F)

POWER

- External power adapter:
 - Input: 240 V AC, 50 Hz (U.S. version: 110 V AC, 60 Hz)
 - Output: 12 V DC, 0.8 A
- Power consumption: 12 Watts (max.)

SYSTEM REQUIREMENTS

- Windows 2000, XP, Vista
- Computer with network connection
- Web browser support:
 - MS Internet Explorer 5.0 or higher (ActiveX)
 - Netscape Navigator, Mozilla, Firefox, Opera (Java for JPEG only)

PACKAGE CONTENTS

- Mini Speed-Dome Camera
- Surface Mount Bracket
- 12 V DC power adapter
- Audio, video cable & terminal block
- User manual and/or quick install guide
- Screwdriver
- Software CD

For more information on INTELLINET NETWORK SOLUTIONS products, consult your local dealer or visit www.intellinet-network.com.



Copyright © INTELLINET NETWORK SOLUTIONS