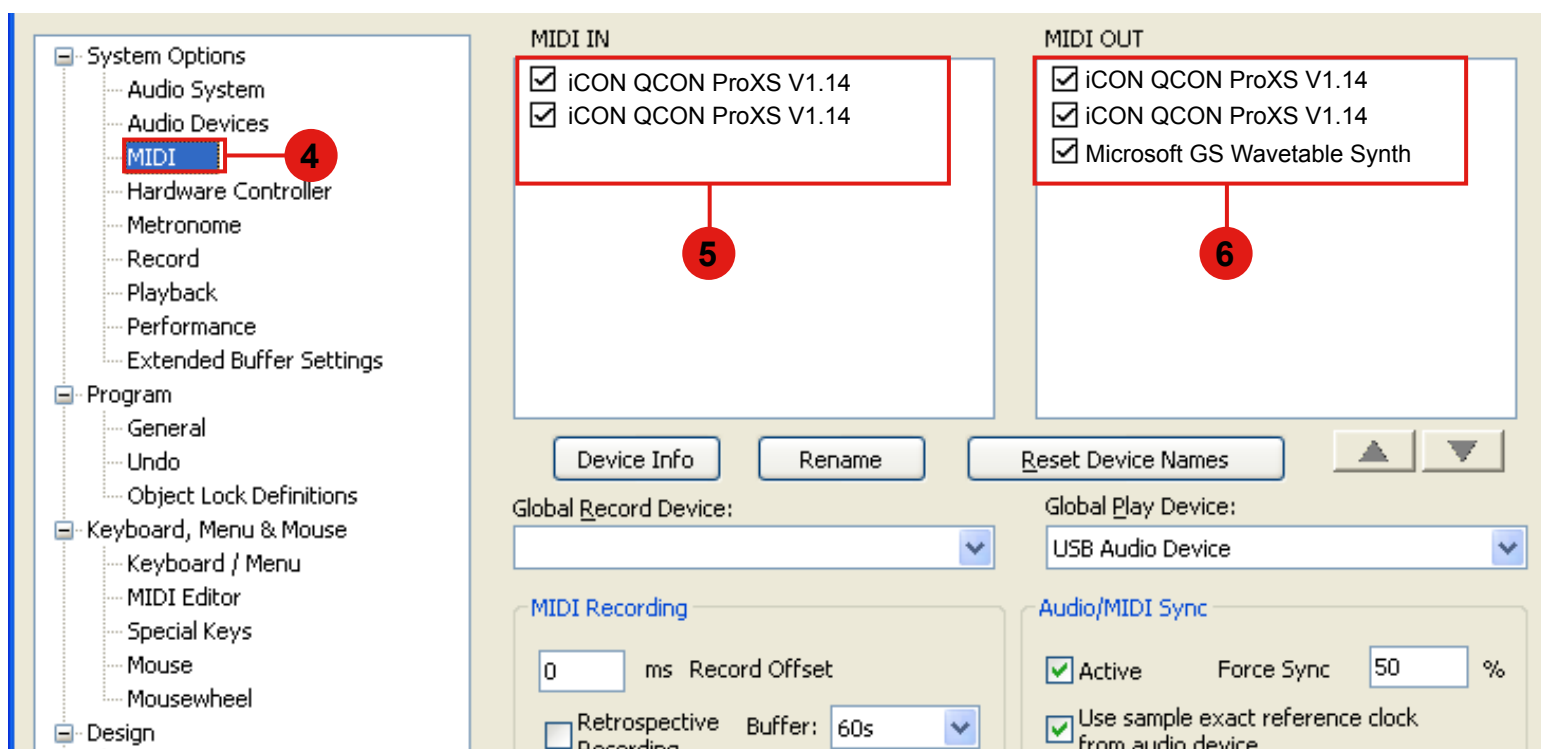
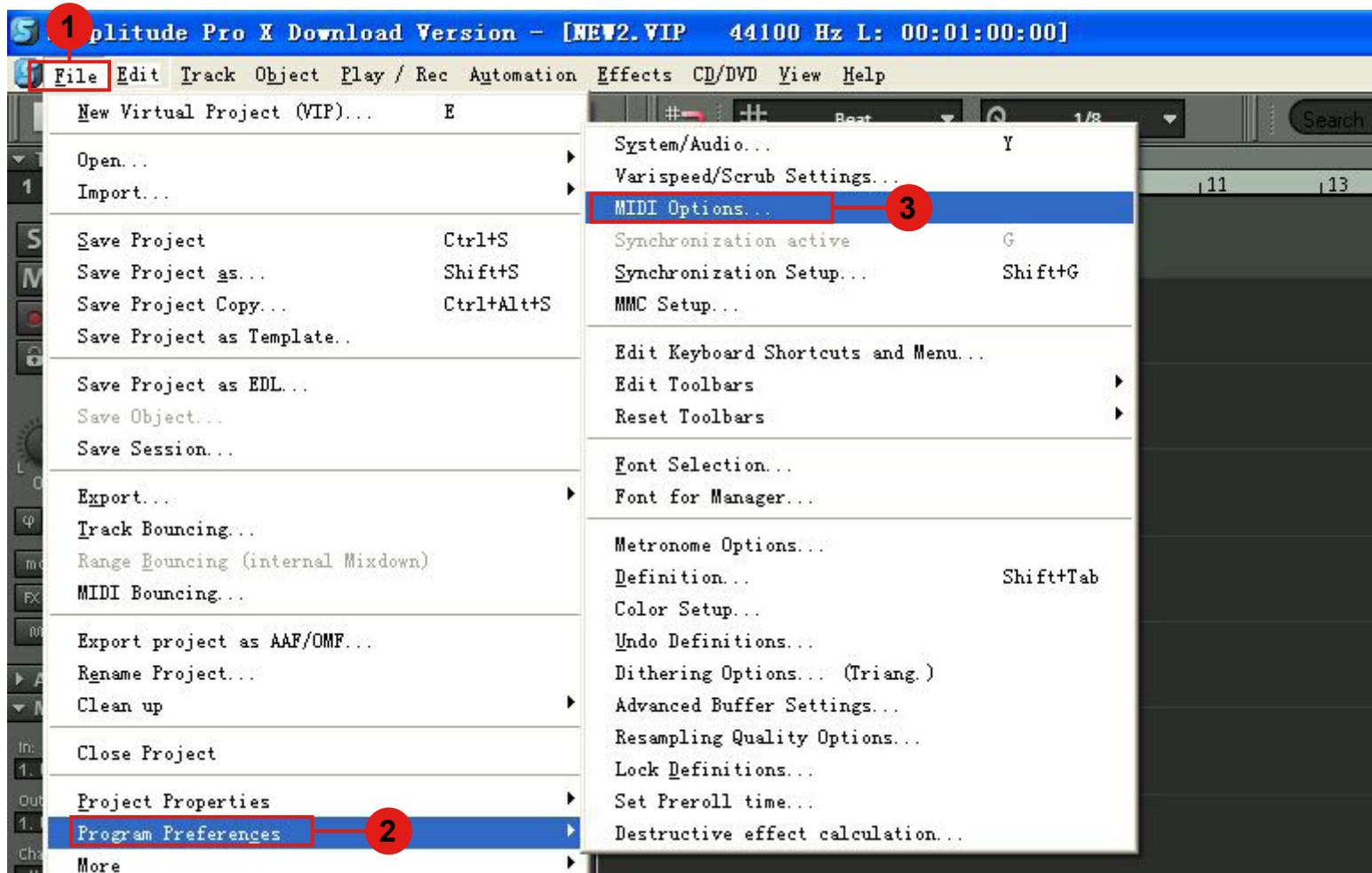


Setup up for your QCON ProXS controller section



Hardware Controller Setup

The screenshot shows the 'Hardware Controller Setup' dialog box. On the left is a sidebar with a tree view containing the following categories: System Options, Program, Keyboard, Menu & Mouse, Design, and Effects. The 'Hardware Controller' item under 'System Options' is selected and highlighted with a red box and a red circle labeled '7'. The main content area has four tabs at the top: 'Controller Setup', 'Customize Controller', 'Options', and 'Fader Scaling'. The 'Controller Setup' tab is active. Inside this tab, there is a list of controllers with a red box around 'Mackie Control' and a red circle labeled '9'. To the right of this list are three buttons: 'Add New' (highlighted with a red box and a red circle labeled '8'), 'Remove', and 'Save Setup As..'. Below the controller list is a section labeled 'EUCON' with an unchecked checkbox labeled 'Activate EUCON'.

This screenshot shows the same 'Hardware Controller Setup' dialog box, but with the 'MIDI' settings visible. The 'Controller Setup' tab is still active, and 'Mackie Control' is selected in the list. The 'Add New', 'Remove', and 'Save Setup As..' buttons are visible. The 'EUCON' section is also present. On the right side, there are two dropdown menus: 'MIDI In' and 'MIDI Out', both set to 'iCON QCON ProXS V1.14'. These are highlighted with red boxes and red circles labeled '10' and '11' respectively. Below these, there are three more settings: 'Track count' set to '8', 'Output' set to 'Send Echo', and 'Internal mode' set to 'Mackie_Set'. At the bottom right, there are three buttons: 'Apply', 'OK' (highlighted with a red box and a red circle labeled '12'), and 'Cancel'.