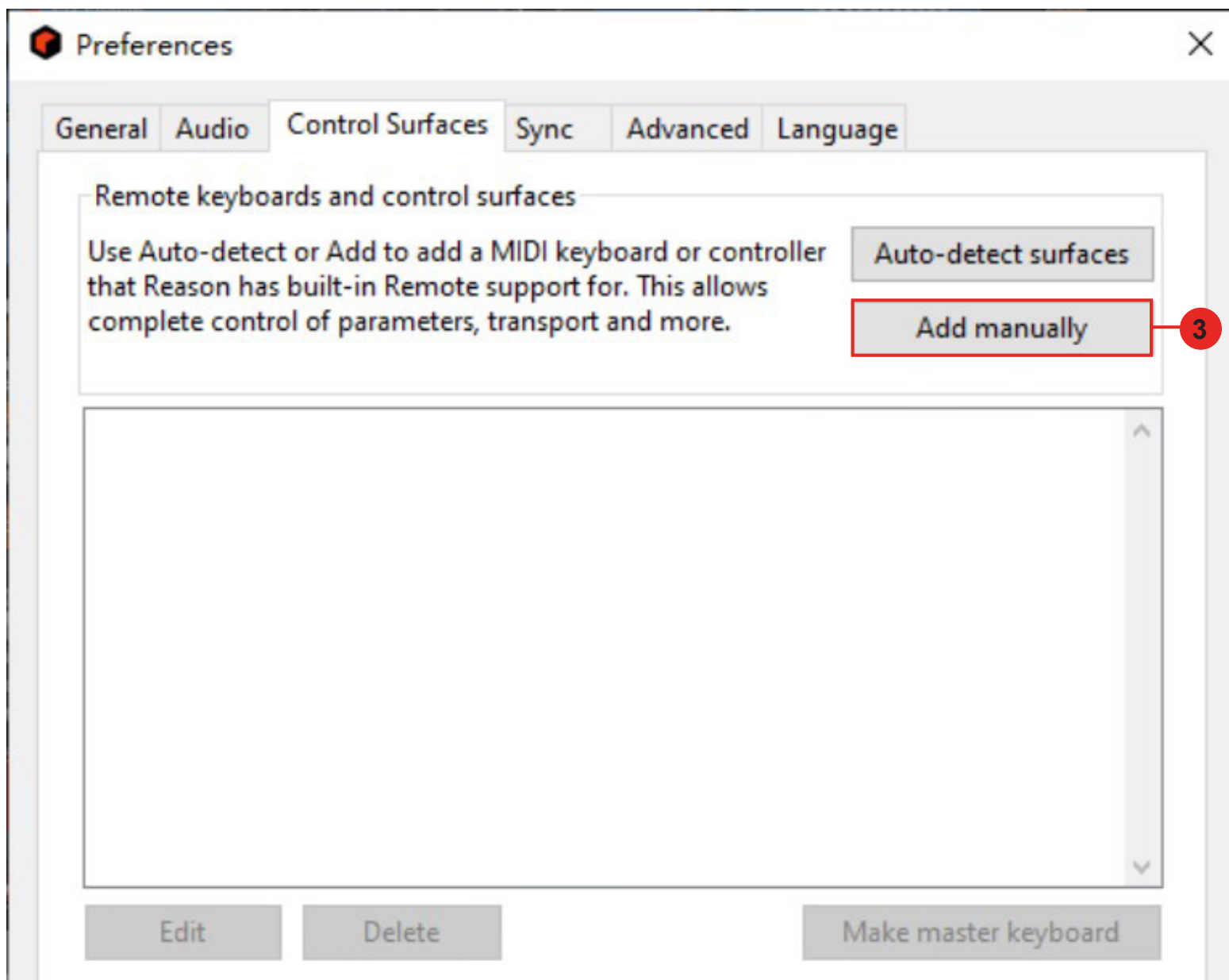


Setup up for your iKeyboard8X controller section



Manufacturer:

4

Mackie

▼

Model:

5

Control

▼



To use the Mackie Control with Remote select Mackie Control operating mode. (Hold down both the Ch. 1 and Ch. 2 SELECT buttons while turning on the Mackie Control).

Name:

Mackie Control

Input:

6

MIDIIN2(Keyboard8X V1.13)

▼

Find

Output:

7

MIDIOUT2(Keyboard8X V1.13)

▼

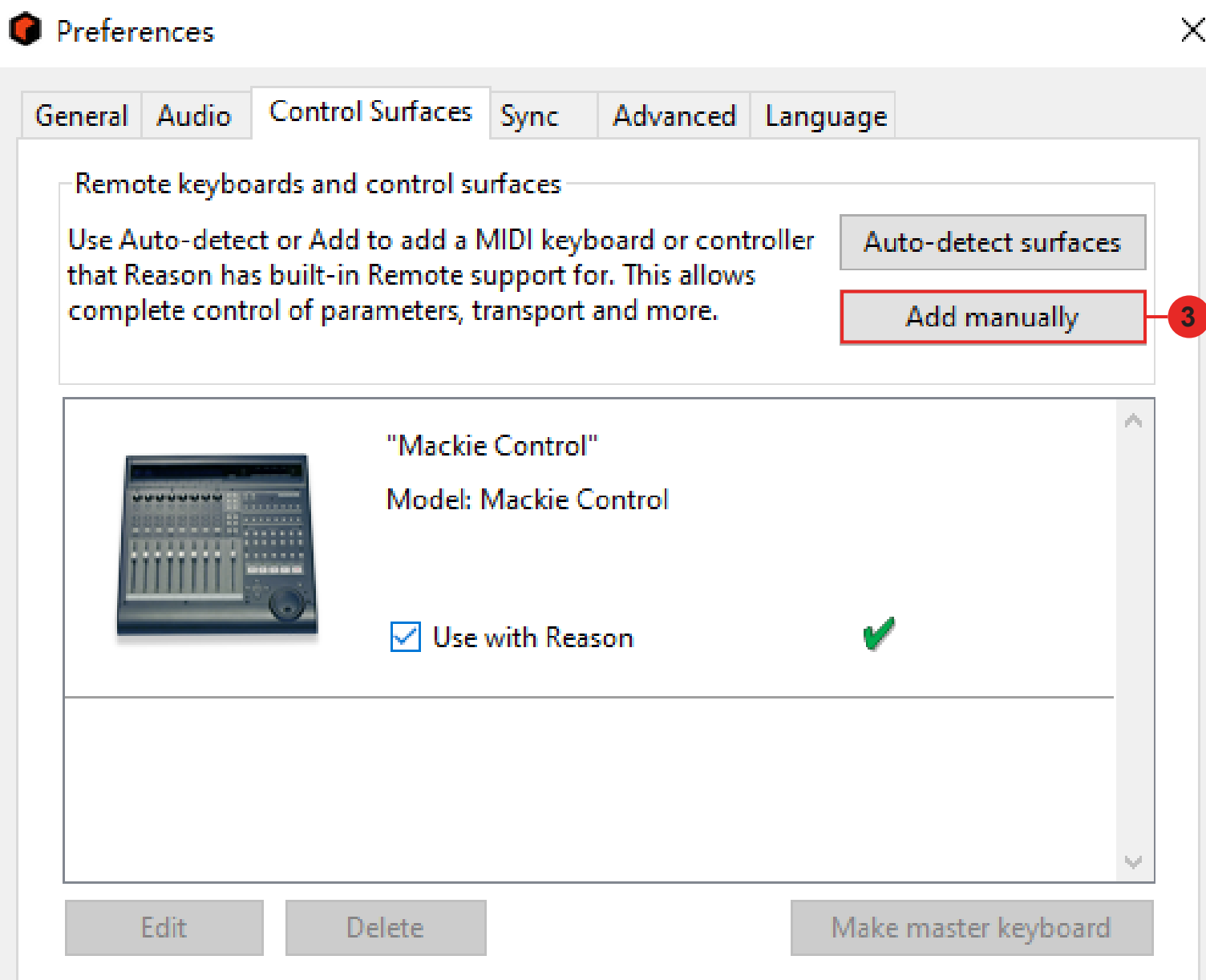
8

OK

Cancel

Help

Setup for your iKeyboard8X Keyswitch instrument input section



Control Surface



Manufacturer:

4

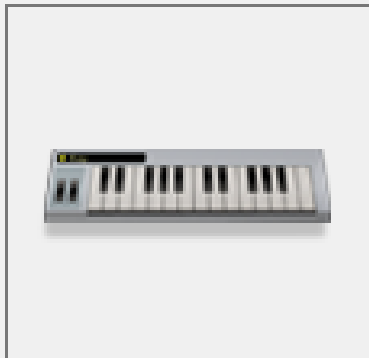
<Other>



Model:

5

MIDI Keyboard (No Controls)



Use this generic control surface model if you have a standard MIDI keyboard with performance controls but no programmable knobs, buttons or faders. If your keyboard has a programmable "data entry slider", this should be set to send MIDI volume (CC#7).

Name:

<Other> MIDI Keyboard (No Controls)

MIDI Input:

6

iKeyboard8X V1.13



Find

7

OK

Cancel

Help

Preferences



General

8

Audio

Control Surfaces

Sync

Advanced

Language

Master tune



440 Hz +0 cents



Audio card driver:

9

MME speaker(2-Realtek High Definition)



Sample rate:

44,100



Buffer size:



8,192 samples



Input latency:

1 ms

Output latency:

0 ms

Recording latency compensation:

0 ms



File **10** Create Options Window Help

- Create Audio Track Ctrl+T
- Create Mix Channel Ctrl+Shift+M
- Create Instrument... Ctrl+I
- Create Effect... Ctrl+F
- Create Send FX...

11 Instruments >

- Effects >
- Utilities >
- Players >

- Addictive Keys
- Dr. Octo Rex Loop Player
- Europa Shapeshifting Synthesizer
- Grain Sample Manipulator
- 12** ID8 Instrument Device
- Kong Drum Designer
- Monotone Bass Synthesizer
- Redrum Drum Computer
- Thor Polysonic Synthesizer

Built-in Devices >

Image-Line >

XLN Audio >



Redrum Drum Computer



Dr. Octo Rex Loop Player

