







SHIELD

Out of this world transparency

Icon's Space Series microphones fuse vintage sounding clarity and warmth with bold, intergalactic design.



<div style="text-align: center;">  <div style="background-color: black; color: white; padding: 2px 10px; font-weight: bold; margin: 0 auto; width: 100px;">CAUTION</div>  </div> <p style="text-align: center; font-size: small;"> RISK OF ELECTRIC SHOCK DO NOT OPEN RISQUE DE CHOC ELECTRIQUE NE PAS OUVRIR </p> <p style="text-align: center; font-size: x-small;"> CAUTION: TO REDUCE THE RISK OF ELECTRIC SHOCK DO NOT REMOVE COVER (OR BACK) NO USER-SERVICEABLE PARTS INSIDE REFER SERVICING TO QUALIFIED PERSONNEL </p> <p style="text-align: center; font-size: x-small;"> ATTENTION: POUR EVITER LES RISQUES DE CHOC ELECTRIQUE: NE PAS ENLEVER LE COUVERCLE. AUCUN ENTRETIEN DE PIECES INTERIEURES PAR L'USAGER. CONFIER L'ENTRETIEN AU PERSONNEL QUALIFIE AVIS: POUR EVITER LES RISQUES D'INCENDIE OU D'ELECTROCUTION, N'EXPOSEZ PAS CET ARTICLE A LA PLUIE OU A L'HUMIDITE </p>	<div style="display: flex; flex-direction: column; align-items: center;">   </div> <p style="font-size: x-small;"> The lightning flash with arrowhead symbol within an equilateral triangle is intended to alert the user to the presence of uninsulated dangerous voltage within the product's enclosure, that may be of sufficient magnitude to electric shock to persons. Le symbol clair avec point de flèche à l'intérieur d'un triangle équilatéral est utilisé pour avertir l'utilisateur de la présence à l'intérieur du coffret de voltage dangereux non isolé d'ampleur suffisante. </p> <p style="font-size: x-small;"> exclamation point within an equilateral triangle is intended to alert the user of the presence of important operating and maintenance (servicing) instructions in the literature accompanying the appliance. Le point d'exclamation à l'intérieur d'un triangle équilatéral est employé pour avertir les utilisateurs de la présence d'instructions importantes pour le fonctionnement et l'entretien (service) dans le livret d'instruction accompagnant l'appareil. </p>
--	--

Important Safety Instructions

1. Read this manual thoroughly before using this unit.
2. Keep this manual for future reference.
3. Take notice of and comply with all warnings included in the user's manual or indicated on the appliance.
4. Follow all instructions included in this manual.
5. Do not expose this unit to rain or moisture. Avoid having water or other liquids spilled on this unit.
6. Do not block any ventilation openings or interfere with the proper ventilation of this unit. Install in accordance with the manufacturer's instructions.
7. Do not use or store near any heat sources such as radiators, heat registers, stoves, or other heat-producing appliances.
8. To avoid the risk of electrical shock, do not touch any exposed wiring while the unit is in operation.
9. Only use attachments/accessories specified by the manufacturer.
10. Unplug this unit and all connected electrical equipment during lightning storms or when left unused a long period of time.
11. Refer all servicing to qualified service personnel. Servicing is required when the appliance has been damaged in any way or fails to operate normally.

WARNING: To reduce the risk of fire or electric shock, do not expose this unit to rain or moisture

Contents

Introduction.....4

What's in the package?4

Register your ICON ProAudio product to your personal account.....5

Features6

Operating the Shield.....7

Specifications9

Services.....10

Introduction

Firstly, congratulations on your purchase of the ICON Pro Audio Shield Studio condenser microphone! In these pages, you'll find a detailed description of the features of the Shield Studio condenser microphone and a full list of specifications

Please register the product on our website at the link below

[www. iconproaudio.com/registration](http://www.iconproaudio.com/registration):

As with most electronic devices, we strongly recommend you retain the original packaging. In the unlikely event that the product is returned for servicing, the original packaging (or reasonable equivalent) is required. With proper care and adequate air circulation, your Shield Studio condenser microphone will operate flawlessly for many years to come.

We trust that this product will provide years of excellent service and in the unlikely event that your product does not perform to the highest standard, every effort will be made to address the issue.

What's in the package?

- Shield Studio condenser microphone
- Shock Mount
- Pop shield
- Metal Storage Case

Register your ICON ProAudio product to your personal account

1. Check serial number of your device

Please go to [http:// iconproaudio.com/registration](http://iconproaudio.com/registration) or scan the QR code below.



Input your device's serial number and the other information on the screen. Click "Submit".

A message will pop up showing your device information such as model name and its serial number - Click "Register this device to my account" or if you see any other message, please contact our after-sales service team

2. Log in to your personal account page for existing user or sign up for new user

Existing user: Please log into your personal user page by inputting your user name and password.

New user: Please click "Sign Up" and fill in all the information.

3. Download all useful materials

All your registered devices under your account will show on the page. Each product will be listed along with all its available files such as drivers, firmware, user manual in different languages and bundled software etc. for download. Please make sure you have download the necessary files such as driver before you begin device installation.

Features



The Shield large diaphragm condenser microphone provides a transparent, neutral sound that is perfect for vocal performance, broadcast, acoustic instruments and amplifiers. When you want to capture what's there, with no coloration or additional 'warmth', the Shield gets the job done. Detailed and crystal clear, this beautifully designed, ergonomic microphone is a definite 'go to' for your recording needs. Provided with a bespoke, easy to install suspension shock mount and pop filter, the Shield is a 'must have' addition to your mic locker.

- Extended upper clarity with smooth mid-range for any voice or instrument applications
- Professional hand-build 35mm large-diaphragm capsule for full, open-sound and unsurpassed audio quality
- Ideal as a primary or support microphone for a variety of recording situations
- Cardioid pickup pattern for outstanding sound source separation and feedback rejection
- Pressure-gradient transducer with shock-mounted capsule
- Perfect for vocals and acoustic instruments
- Ultra-rugged construction with all metal body
- Top-quality components including Wima capacitors and Fairchild resistors
- Suspension shock mount and innovative zero-hassle "magnet-slip on" pop filter
- Metal storage carry case

Operating the Shield

Powering the Shield (48V)

The Shield is a condenser microphone and therefore needs to be operated by connecting a phantom power supply. Phantom power is standard on most quality mixers, outboard MIC pre-amplifiers and hard disk recorders. If necessary an external phantom power supply can also be used. The Shield receives the phantom power directly from a MIC cable when connected to a mixer or other microphone input that includes a phantom supply. The power is actually sent OUT of the microphone INPUT, riding silently along with the audio signal. Most mixers have a switch to engage the phantom power so be sure to check that the phantom power is on.

Setting up the signal level

When connecting the Shield to a mixer or recorder input, be sure that the input is at an acceptable level. Also, be sure that the 48V phantom power is engaged as explained at the previous section. Most mixers and recorders of reasonable quality will offer a microphone input with MIC trim (usually called Trim or Gain) control. The purpose of the MIC trim control is to optimize the amount of good signal to any noise associated with the mixers electronics. A good MIC pre with trim also will have a Peak or Clip LED. To set a good level on the MIC, set the Shield up in front of the desired sound source and slowly raise the MIC trim control until you see the Peak LED light up. Then, turn the mix trim control down until the LED no longer illuminates. On most mixers, the ideal setting is that the trim control is turned up as much as possible without lighting the Peak LED.

Microphone Placement

In order to maximize the sound quality, you must pay careful attention to the placement of your Shield and how it is positioned for the instrument or vocalist that you are miking. All microphones, especially unidirectional or cardioids microphones, exhibit a phenomenon known as the “proximity effect”. Very simply put, proximity effect is a resulting change in the frequency response of a microphone based on the position of the microphone capsule relative to the sound source. Specifically, when you point a cardioid MIC directly at the sound source (on-axis) you will get the best frequency response, however, when you start pointing the microphone slightly away (off-axis) you will notice the low frequency dropping off and the microphone will start to sound thinner.

For most vocal applications you'll want to position the microphone directly in front of the artist. The same may be true for miking instruments. However, you can make some pretty amazing equalization adjustments by slightly changing the angle of the capsule to the sound source. This can be a very useful technique in capturing the optimum sound of a drum kit, acoustic guitar, piano or other instruments in a

live room or sound stage. Experimentation and experience are the best teachers in getting good sounds, so plug in!

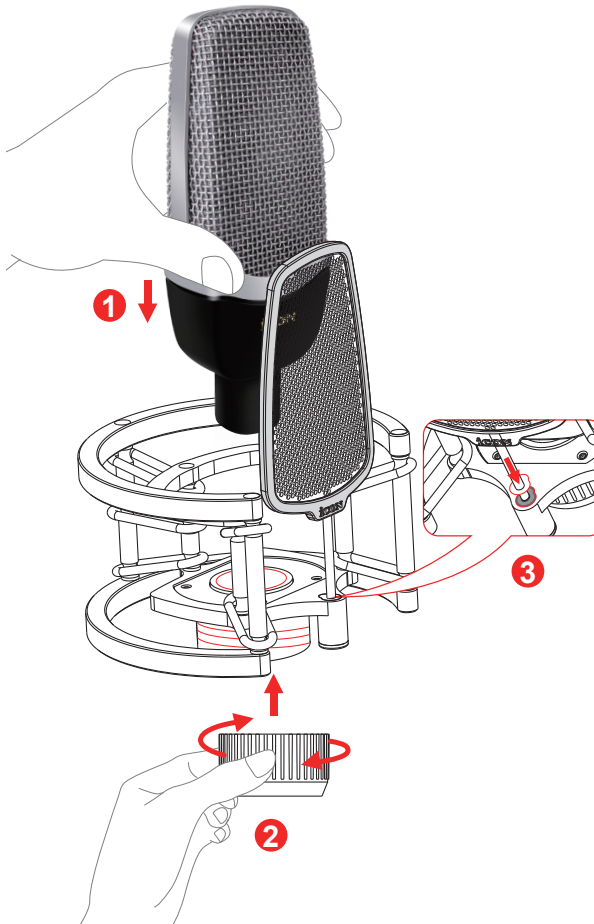
"P"- Popping

P-Poping is that annoying pop that you can get when the microphone diaphragm gets a blast of air from a vocalist pronouncing words with the letter "P" included, (because it is a "plosive" syllable). The Shield has a built-in pop filter, which is fitted to the shock mount in order to minimize the pop effect.

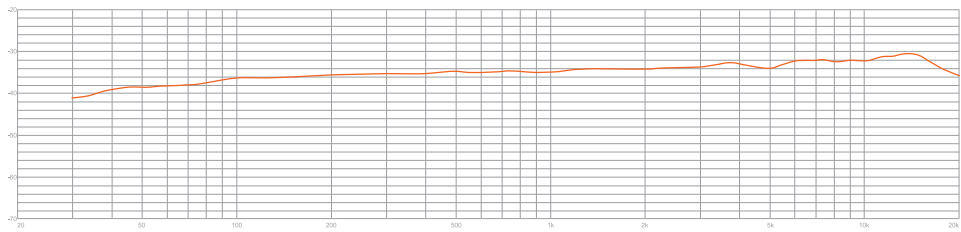
Simply drop it in - a magnet will secure its fixture.

Mounting the Shield

Mount your Shield into the suspension mount provided. Twist the locking nut until the Shield is held securely in place. Drop the magnetic pop shield into place as shown. The magnetic fixture will hold the filter firmly in place.



Specifications



Transducer type.....	electrostatic
Operating principle.....	pressure gradient
The diaphragms active diameter.....	34mm
Frequency range.....	20 Hz to 20 kHz
Polar pattern.....	unidirectional,cardioid
Sensitivity at 1 kHz into 1000 Ω load.....	-32dBV
Output impedance.....	50 Ω
Rated load impedance.....	1000 Ω
Suggested load impedance.....	>500 Ω
Maximum SPL for 0,5% THD at 1000 Ω load.....	130dB
S/N Ratio DIN/IEC 651 A-weighten.....	84 dB
Equivalent noise level DIN/IEC A-weighten.....	8 dB-A
Dynamic range of the microphone preamplifier.....	122 dB
Phantom powering voltage on pin 2&3 of XLR	+48V (+/-4V)
Current consumption	≤5 mA
Output connector.....	3-pin XLR male
Dimension.....	60mmX25mmX140mm
Weight.....	0.273kg

Services

If your Shield needs servicing, follow these instructions.

Check our online Help Center at <http://support.iconproaudio.com/hc/en-us>, for information, knowledge, and downloads such as:

1. FAQ
2. Download
3. Learn More
4. Forum

Very often you will find solutions on these pages. If you don't find a solution, create a support ticket at our online Help Center at the link below, and our technical support team will assist you as soon as we can.

Navigate to <http://support.iconproaudio.com/hc/en-us> and then sign in to submit a ticket.

As soon as you have submitted an inquiry ticket, our support team will assist you to resolve the problem with your ICON ProAudio device as soon as possible.

To send defective products for service:

1. Ensure the problem is not related to operation error or external system devices.
2. Keep this owner's manual. We don't need it to repair the unit.
3. Pack the unit in its original packaging including end card and box. This is very important. If you have lost the packaging, please make sure you have packed the unit properly. ICON is not responsible for any damage that occurs due to non-factory packing.
4. Ship to the ICON tech support center or the local return authorization. See our service centers and distributor service points at the link below:

If you are located in US

Send the product to:

North America

Mixware, LLC – U.S. Distributor

3086 W. POST RD.

LAS VEGAS NV 89118

Tel.: (818) 578 4030

Contact: www.mixware.net/help

If you are located in Europe

Send the product to:

Sound Service

GmbH European

Headquarter Moriz-Seeler-Straße

3D-12489 Berlin

Telephone: +49 (0)30 707 130-0

Fax: +49 (0)30 707 130-189

E-Mail: info@sound-service.eu

If you are located in Hong Kong

Send the product to:

ASIA OFFICE:

Unit F, 15/F., Fu Cheung Centre,

No. 5-7 Wong Chuk Yueng

Street, Fotan,

Sha Tin, N.T., Hong Kong.

Tel: (852) 2398 2286

Fax: (852) 2789 3947

Email: info.asia@icon-global.com

5. For additional update information please visit our website at:

www.iconproaudio.com



天猫官方旗舰店



天猫店艾肯旗舰店

抖音号



抖音iCON艾肯

哔哩哔哩



B站iCONProAudio

中国地区用户

微信公众号



微信号iCON-PRO

官方售后QQ



4006311312.114.qq.com

Twitter



www.twitter.com/iconproaudio

Instagram



www.instagram.com/iconproaudio

Facebook



www.facebook.com/iconproaudio

Youtube



www.youtube.com/iconproaudio

Website



www.iconproaudio.com

Support



support.iconproaudio.com

Dashboard



iconproaudio.com/dashboard/

www.iconproaudio.com