





CONPAD

Multi-Control USB MIDI controller with touch strips & drum pads



<div style="text-align: center;">  <div style="background-color: black; color: white; padding: 2px 10px; font-weight: bold; margin: 0 auto; width: 100px;">CAUTION</div>  </div> <p style="text-align: center; font-size: small;"> RISK OF ELECTRIC SHOCK DO NOT OPEN RISQUE DE CHOC ELECTRIQUE NE PAS OUVRIR </p> <p style="text-align: center; font-size: x-small;"> CAUTION: TO REDUCE THE RISK OF ELECTRIC SHOCK DO NOT REMOVE COVER (OR BACK) NO USER-SERVICEABLE PARTS INSIDE REFER SERVICING TO QUALIFIED PERSONNEL </p> <p style="text-align: center; font-size: x-small;"> ATTENTION: POUR EVITER LES RISQUES DE CHOC ELECTRIQUE: NE PAS ENLEVER LE COUVERCLE. AUCUN ENTRETIEN DE PIECES INTERIEURES PAR L'USAGER. CONFIER L'ENTRETIEN AU PERSONNEL QUALIFIE. AVIS: POUR EVITER LES RISQUES D'INCENDIE OU D'ELECTROCUTION, N'EXPOSEZ PAS CET ARTICLE A LA PLUIE OU A L'HUMIDITE </p>	<div style="display: flex; flex-direction: column; align-items: center;">   </div> <p style="font-size: x-small;"> The lightning flash with arrowhead symbol within an equilateral triangle is intended to alert the user to the presence of uninsulated dangerous voltage within the product's enclosure, that may be of sufficient magnitude to electric shock to persons. Le symbol clair avec point de flèche à l'intérieur d'un triangle équilatéral est utilisé pour avertir l'utilisateur de la présence d'intérieur du coffret de voltage dangereux non isolé d'ampleur suffisante. </p> <p style="font-size: x-small;"> exclamation point within an equilateral triangle is intended to alert the user of the presence of important operating and maintenance (servicing) instructions in the literature accompanying the appliance. Le point d'exclamation à l'intérieur d'un triangle équilatéral est employé pour avertir les utilisateurs de la présence d'instructions importantes pour le fonctionnement et l'entretien (service) dans le livret d'instruction accompagnant l'appareil. </p>
---	--

Important Safety Instructions

1. Read this manual thoroughly before using this unit.
2. Keep this manual for future reference.
3. Take notice of and comply with all warnings included in the user's manual or indicated on the appliance.
4. Follow all instructions included in this manual.
5. Do not expose this unit to rain or moisture. Avoid having water or other liquids spilled on this unit.
6. When cleaning the cabinet or other parts of this appliance, use only a dry or slightly damp soft cloth.
7. Do not block any ventilation openings or interfere with the proper ventilation of this unit. Install in accordance with the manufacturer's instructions.
8. Do not use or store near any heat sources such as radiators, heat registers, stoves, or other heat-producing appliances.
9. Do not interfere with the safety purpose of the polarized or grounding-type plug. A polarized plug has two blades with one wider than the other. A grounding-type plug has two blades and a third grounding prong. These are designated for your safety. If the provided plug does not fit into your outlet, consult an electrician.
10. Protect the power cord from being walked on or otherwise damaged by items placed on or against them. Particular attention should be given to the plugs, receptacles, and the point where the cord exits the appliance.
11. To avoid the risk of electrical shock, do not touch any exposed wiring while the unit is in operation.
12. Only use attachments/accessories specified by the manufacturer.
13. Unplug this unit and all connected electrical equipment during lightning storms or when left unused a long period of time.
14. Refer all servicing to qualified service personnel. Servicing is required when the appliance has been damaged in any way or fails to operate normally.

WARNING: To reduce the risk of fire or electric shock, do not expose this unit to rain or moisture

Contents

Introductions	4
What's in the package?	4
Register your ICON ProAudio product to your personal account	5
Features	6
Front Panel Layout	7
Side Panel Layout	9
Installing iMap™ Software for Mac OS X.....	10
Installing iMap™ Software for Windows	12
Getting Started	14
Connecting your iConPad controller.....	14
Assigning MIDI functions with iMap™.....	17
iMap™ iConPad software panel	17
Firmware upgrade	23
Restore the factory default settings.....	23
Specifications	24
Appendix A.....	25
Service.....	27

Introductions

Thank you for purchasing the ICON iConPad USB MIDI controller. We sincerely trust this product will provide years of satisfactory service, but if anything is not to your complete satisfaction, we will endeavor to make things right.

In these pages, you'll find a detailed description of the features of the iConPad USB MIDI controller, as well as a guided tour through its front and rear panels, step-by-step instructions for their setup and use, and full specifications.

Please register the product on our website at the below link
[www. iconproaudio.com/registration](http://www.iconproaudio.com/registration):

Please follow the step by step procedures. Start by inputting the device's serial number as well as your personal information, etc. By registering your product online, you will be entitled to service and after-sales support at our Help Center by visiting our website at **www.iconproaudio.com**. Also, all the registered products under your account will be listed on your personal product page where you will find updated information such as firmware/driver upgrades, software bundles, user manual downloads, etc. for your device.

As with most electronic devices, we strongly recommend you retain the original packaging. In the unlikely event the product must be returned for servicing, the original packaging (or reasonable equivalent) is required.

With proper care and adequate air circulation, your iConPad USB MIDI controller will operate without any trouble for many years. We recommend that you record your serial number in the space provided below for future reference.

What's in the package?

- iConPad USB MIDI controller x 1
- Quick Start Guide
- USB2.0 Cable

Register your ICON ProAudio product to your personal account

1. Check serial number of your device

Please go to <http://iconproaudio.com/registration> or scan the QR code below.



Input your device's serial number and the other information on the screen. Click "Submit".

A message will pop up showing your device information such as model name and its serial number - Click "Register this device to my account" or if you see any other message, please contact our after-sales service team

2. Log in to your personal account page for existing user or sign up for new user

Existing user: Please log into your personal user page by inputting your user name and password.

New user: Please click "Sign Up" and fill in all the information.

3. Download all useful materials

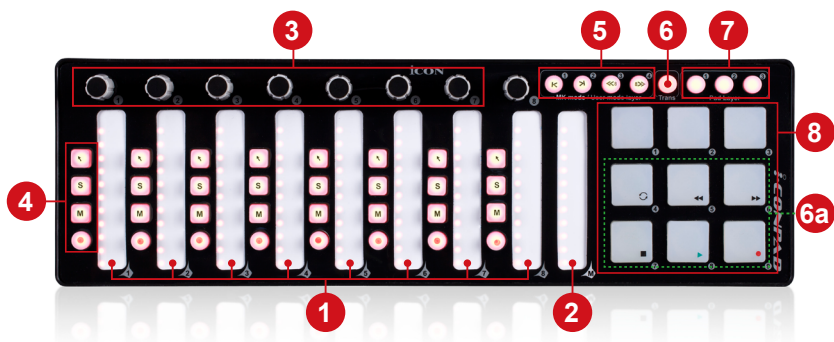
All your registered devices under your account will show on the page. Each product will be listed along with all its available files such as drivers, firmware, user manual in different languages and bundled software etc. for download. Please make sure you have download the necessary files such as driver before you begin device installation.

Features



- Extremely compact and designed to match the MacBook™
- Powerful controller is well equipped and has easy setup with Mackie Control and HUI protocols
- 9 backlit LED touch-pad faders for gradual or instant parameter value changes
- Backlit LED touch fader reacts in real-time with DAW. Synchronizes automatically with a different channel value when switching between channels
- Dual function encoder knobs (Enter & rotate)
- Illuminated buttons for each channel including Sel, Mute, Solo and Record
- 2 illuminated “Track” buttons for easy selection of different channels
- 2 illuminated “Bank” buttons for shifting 8-channels
- “Layer” buttons for customizing 4 scenes for instant control of multiple applications
- 6 transport buttons
- 9 integrated velocity-sensitive trigger pads send MIDI notes or control data
- Multi-velocity curves available for selection (Pads)
- Mackie control built-in for Cubase, Nuendo, Samplitude, Logic Pro and Ableton Live
- Mackie HUI protocol built-in for Pro Tools
- Class-compliant with Windows XP, Vista (32-bit), Windows 7 (32-bit & 64-bit), and Mac OS X (IntelMac)
- USB bus-powered
- iMap™ software included for easy mapping of MIDI functions
- An aluminum cover, in different graphic designs and colors, is available as an option

Front Panel Layout



1. Backlit LED touch faders to control DAW's channel faders

The touch faders could be used to adjust the parameter of different channels. At Mackie control /HUI mode, press the two “Track or Bank (5)” shifting buttons to shift between channels.

Tip: You could set your touch faders to “instant” or “gradual” mode with the provided iMap software

2. Backlit LED touch faders to control DAW's master fader

The touch fader can be used to adjust the parameter of the master channel.

3. Dual function encoders

The dual functioned encoder acting as a push-button and a rotary control.

4. Control buttons

REC buttons	Activate and deactivate the recording state of the associated channel. The switch will light red when the channel is armed.
MUTE buttons	Activate and deactivate the mute state of the associated channel. The switch will light red when the channel is muted.
SOLO buttons	Turn On and Off the solo state of the associated channel. The switch will light red when the channel solo state is on and other channels will be muted. You could solo multiple channel by pressing SOLO buttons on additional channels.
SEL buttons	The SEL buttons activate the associated channels in the DAW software in order to perform a specific operation (for example, when adjusting EQ with the ASSIGNABLE ENCODERS, the SEL switch will be used to choose the channel you want to adjust). When a channel is selected, the associated SEL switch's red LED will light up.

5. MC (Mackie Control)/User mode buttons

There are four buttons to shift track at MC mode or shifting the User mode's 4 layers.

MC Mode	
I< button	Shift "one" channel up for all faders (except the master channel).
>I button	Shift "one" channel down for all faders (except the master channel).
<< 8 button	Shift "eight" channels up for all faders (except the master channel).
8 >> button	Shift "eight" channels down for all faders (except the master channel).

User mode	
❶ button (I<)	Select user mode's layer 1
❷ button (I<)	Select user mode's layer 2
❸ button (I<)	Select user mode's layer 3
❹ button (I<)	Select user mode's layer 4

6. Trans (Transport) button

Activate this button to use the lower six drum pads(6a) as the transport (MMC) buttons.

6a. Transport control buttons section (the lower six drum pads)

PLAY button	Activate the play function of the DAW.
STOP button	Activate the stop function of the DAW.
REC button	Activate the record function of the DAW.
REWIND button	Activate the rewind function of the DAW.
FAST FORWARD button	Activate the fast forward function of the DAW.
LOOP button	Activate the loop function of the DAW.

7. Pad layer buttons (Must be activated in order to use the 9 pads as drum pads)

These three buttons allow you to switch between the three layers. Each layer can be set to different parameters for each drum pad.

8. 9 integrated velocity-sensitive trigger pads

9 integrated velocity-sensitive trigger pads send MIDI notes or control data

Side Panel Layout



1. USB port (B-Type)

Functions as a MIDI port to your notebook (or computer) and compatible software. Also provides power to your iConPad.

Installing iMap™ Software for Mac OS X

Please follow the procedures below step-by-step to install your iMap™ software to Mac OS X

1. Turn on your Mac.

Please follow the procedures below step-by-step to install your iMap™ software to Mac OS X

2. Download the Windows driver from your “Personal User Page at www.iconproaudio.com” (Please refer to Diagram 1 for instruction)

After you downloaded the driver file, please click it to start the installation process.

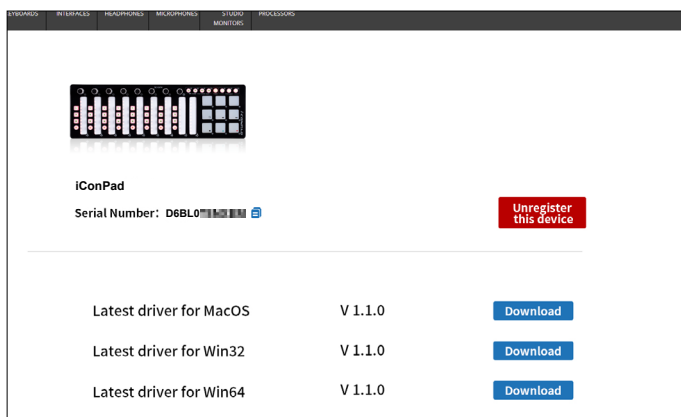


Diagram 1

3. Setup Wizard appear

Setup wizard appears, please click “Continue”

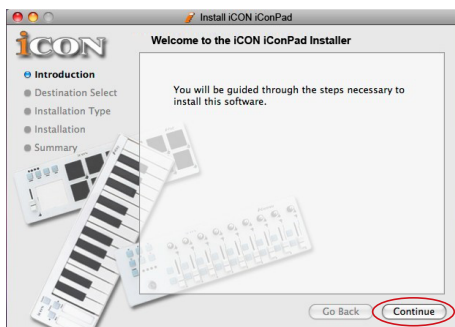


Diagram 2

4. Choose Install Location

Select a destination to install iMap™ software to Mac OS X, then click "Continue"

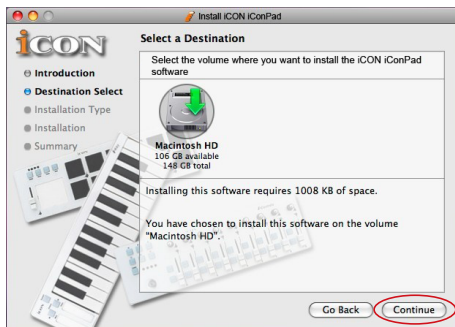


Diagram 3

5. Change Install Location

If you want to change install location, please click 'Change Install Location' button and select another location or just click 'Install' button to continue.

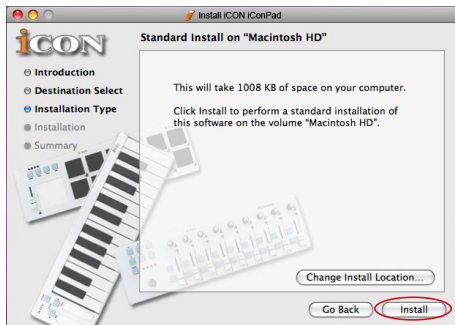


Diagram 4

6. Input Administrator information

To install iMap™ software, you need to input administrator user information, please input the name and password of administrator then click 'Install' to continue.

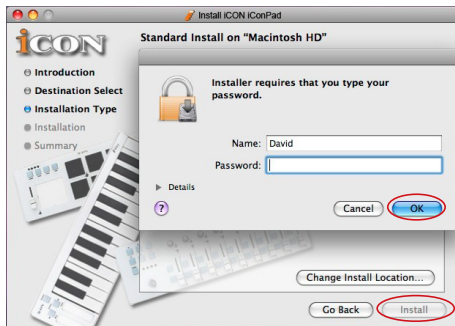


Diagram 5

7. Installation finished

Click "Close" to complete the iMap™ software installation.

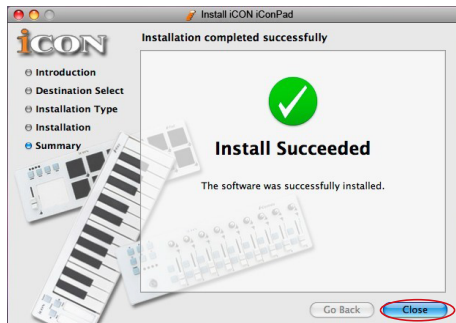


Diagram 6

Installing iMap™ Software for Windows

Please follow the procedures below step-by-step to install your iMap™ software.

1. Turn on your PC.
2. Download the Windows driver from your “Personal User Page at www.iconproaudio.com” (Please refer to Diagram 7 for instruction)

After you downloaded the driver file, please click it to start the installation process.

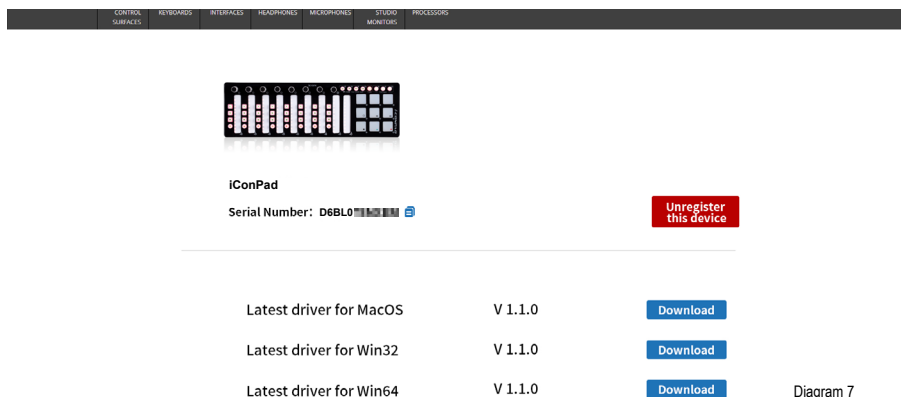


Diagram 7

3. Setup Wizard appear

Setup wizard appears, please click “Next”



Diagram 8

4. Choose Install Location

Choose your preferred install location for iMap™ or use the default location and click “Next”

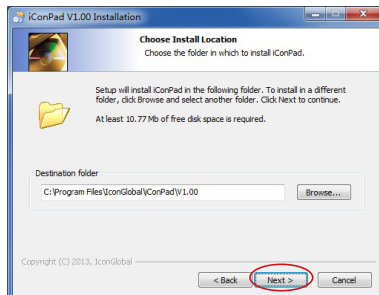


Diagram 9

5. Select shortcut

Select the start menu folder in which you would like to create the iMap™ shortcut. Then click “Next”.

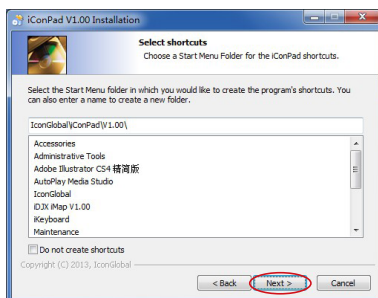


Diagram 10

6. Create a shortcut on your desktop

Please untick the box if you do not want to place a shortcut icon on your desktop for iMap™, otherwise click “Next”.

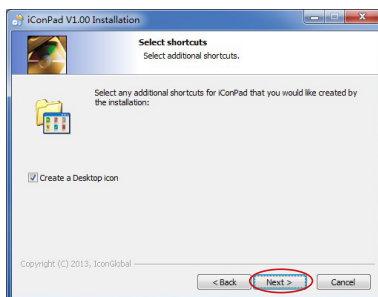


Diagram 11

7. iMap™ started to install

The iMap™ installation has now started, wait for it to finish. Then click “Finish”.

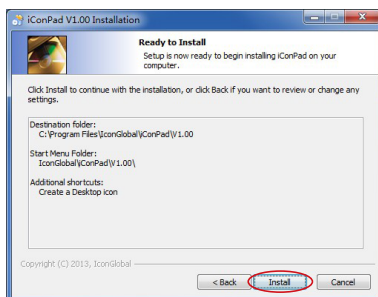


Diagram 12

8. Installation finished

Click “Finish” to complete the iMap™ software installation.



Diagram 13

Getting Started

Connecting your iConPad controller

1. Connect the iConPad to your Mac/PC via the USB port.

Choose a USB port on your Mac/PC and insert the wide (flat) end of the USB cable. Connect the cable's small jack end to the iConPad. Your Mac/PC should automatically "see" the new hardware and notify you that it is ready to use.

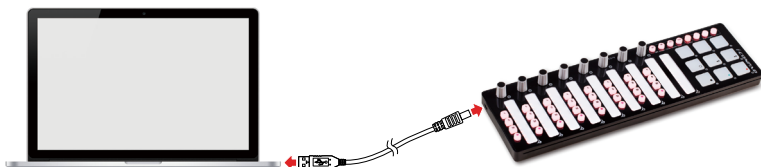


Diagram 14



Diagram 15

2. Please launch the iMap™ software.



Diagram 16

3. Mode select & assign the MIDI messages to iConPad

Select Mackie Control or HUI mode from the pull down menu for pre-mapped MIDI mapping.

Select User Defined mode for self MIDI assignment. Refer to page 16 for “Assign the MIDI messages with “iMap™” software.

Tip: Make sure you have selected the correct DAW mode in the pull down menu.

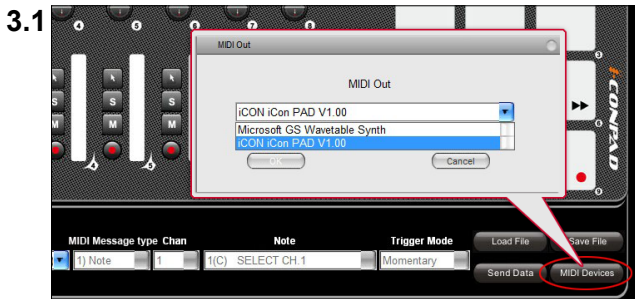


Diagram 17

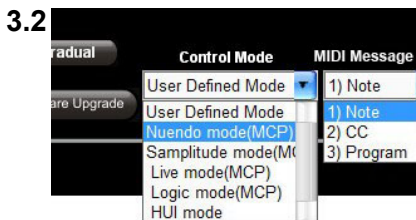


Diagram 18

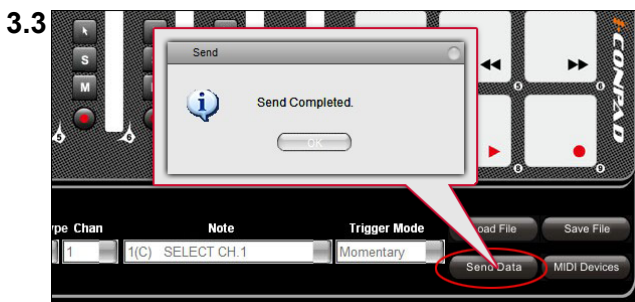


Diagram 19

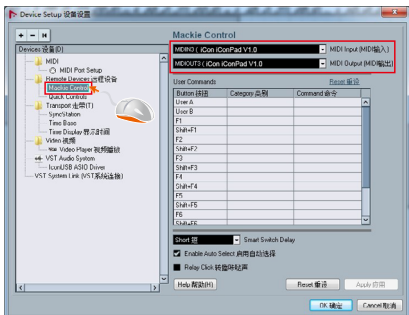
4. Setup your DAW

Activate the ICON iConPad controller in your DAW or MIDI software using “MIDI Setup” or “MIDI Devices”.

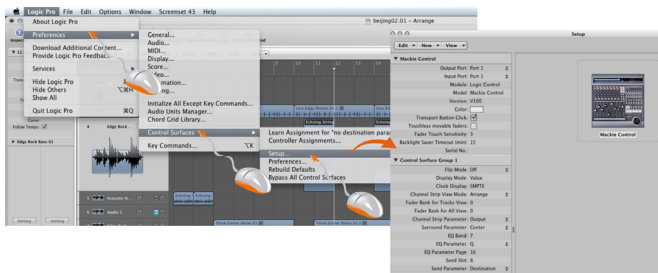
For Logic™, Cubase™ and Nuendo™, choose Mackie Control at the “Device List”.

Note: Every application does this a little different, so refer to your software user manual for the settings.

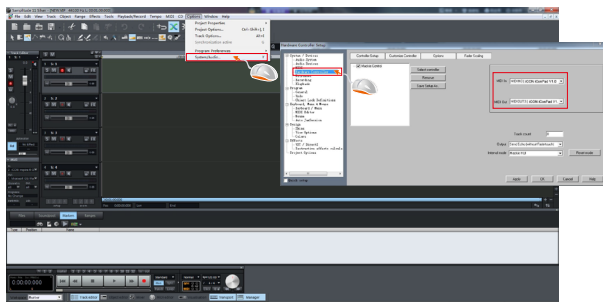
Cubase™ / Nuendo™



Logic™



Samplitude™



Assigning MIDI functions with iMap™

You can use iMap™ to easily assign the MIDI functions of your iConPad. Please launch the iMap™ software.

Note: if your iConPad is not connected to your Mac/PC, the message “There are no MIDI input devices” will appear. Please connect iConPad to your Mac/PC with the provided USB cable.



Diagram 20

iMap™ iConPad software panel

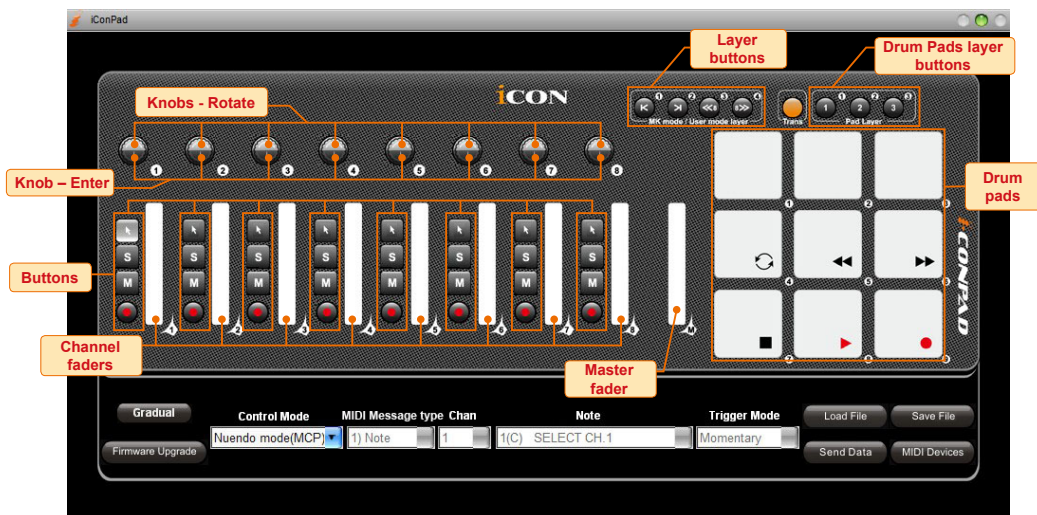


Diagram 21

1. Control surface elements assignment

These elements include all the buttons, the knobs, the drum pads and the touch faders. They are assigned by the lower four drop-down menus including “MIDI Message type”, “Channel”, “MIDI Message” and “Trigger mode”. To assign a control, click on it to select (it will change to different color) and assign its midi message with the aforementioned drop-down menus

Note: Only “User defined mode” will allow you to assign your own midi mapping to your iConpad’s controls. However, it is quite complicated and unless you are really familiar with your DAW’s MIDI message structure, we recommended that you use the Mackie Control or HUI mode which has already mapped the major functions, to save you the trouble of doing all the mapping.

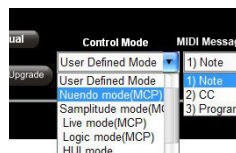


Diagram 22

iConPad has built-in Mackie Control protocols & HUI for different DAW such as Cubase™, Samplitude™, Ableton Live™, Logic Pro™ and ProTool™ By selecting the correct DAW and Mackie control (HUI) protocol, iConPad has automatically mapped the major functions and work seamlessly with that DAW.

Note: To use the drum pads as button, the “Tran” button must be activated. To use them as a velocity drum pads, activate one of the three “Drum pads” layer button on the top right of the panel.

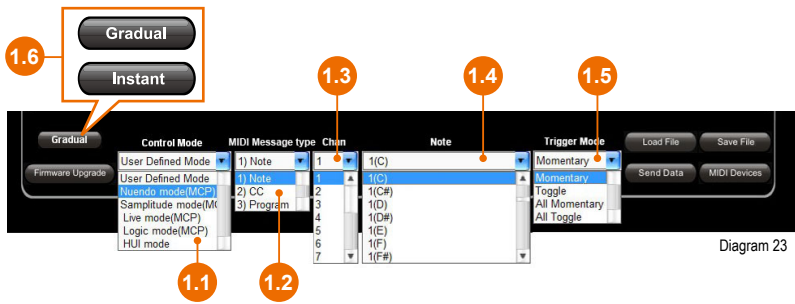


Diagram 23

1.1 Control Mode:

Mackie Control	Select “Mackie Control” for Mackie control protocol according to your DAW use
HUI	Select “HUI” for HUI control protocol
User Defined	Set your own midi settings for all the controllers.

Note: In “Mackie/HUI Control” mode, settings are fixed and not changeable
Tip: Please refer to Appendix A for Mackie Control and HUI protocol functions

1.2 MIDI Message type (Advance user)

If you would like to assign your own midi mapping, select “User Defined” mode at the control mode drop down menu. To assign a control, select it by clicking it and assign a different midi message by the three drop down menus. The table below shows the different types of midi messages and their changeable parameters.

MIDI Message Type	Channel	Parameters
Note	0 to 16	-1(C) to 9(G)
CC	0 to 16	0 to 127
Program	0 to 16	0 to 127

1.3 MIDI Channel (Chan)

Assign MIDI channel from 0-16

1.4 MIDI Message

There are three different types of midi message including Note, CC and Program value. Their parameters are as shown in the table below:

MIDI Message Type	Parameters
Note	-1(C) to 9(G)
CC	0 to 127
Program	0 to 127

1.5 Trigger mode

This function allows you to assign all the buttons (except pads) and the knob's enter setting (click the lower part of the knob). There are four different settings on this drop-down menu as follow:

Toggle	Midi message will be send and activate once
Momentary	Midi message will stay active.
All Toggle	The toggle setting will be assigned to all the buttons and knobs on the same layer.
All Momentary	The momentary setting will be assigned to all buttons and knobs on the same layer.

Tip: Different settings can be assigned to each of the four layers

1.6 Gradual & Instant button (For fader)

Gradual	Activate to allow the faders to work as conventional faders. The value will change gradually while you are sliding your finger
Instant	The fader value will jump instantly wherever your finger taps the touch fader.

1.7 4-layer buttons (Control mode: User Defined)

You may make a different mapping for each of the four layers.

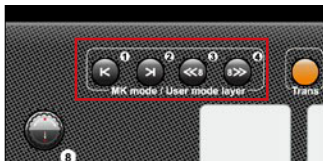


Diagram 24

2. Drum Pads assignment

There are nine velocity sensitive drum pads with 3 layers available for you to assign. To assign the drum pad, click any one of the three drum pad layer's buttons. The drum pad assignment control panel will pop up automatically and there are six different drop-down menus to make the assignment. To assign a pad, simply click it to select and a different color will be shown.

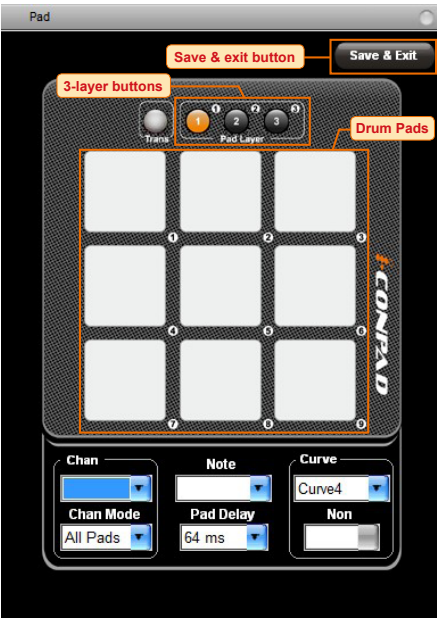


Diagram 25

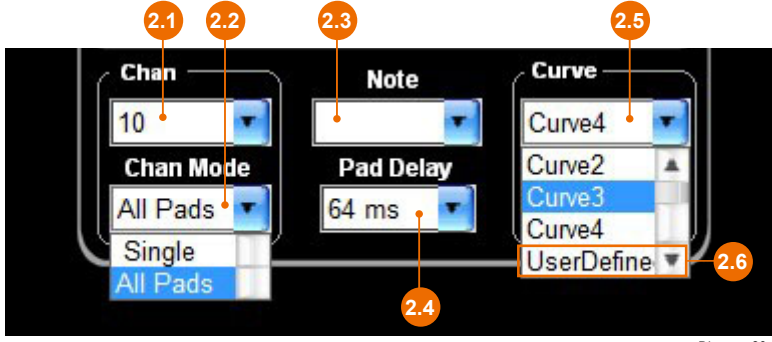


Diagram 26

2.1 MIDI Channel (Chan)

Assign MIDI channel from 0-16

2.2 Chan Mode

All Pads	Assign the same midi channel to all 9 pads on the same layer
Single	Assign a midi channel to each pad individually.

2.3 Note

Assign the note value from -1(C) to 9(G) to the selected pad

2.4 Pad delay

Pad delay is the setting to improve the pad echo problem (i.e. two drum sounds with one hit). Only one message (i.e. the drummer hit) will be sent within the selected time zone (e.g. 25ms) to avoid echo happening, in which a second message is sent due to vibration after the drummer hit.

2.5 Curve

Assign one of the five available velocity curves to the pad and the same velocity curve will be applied to the same layer. To assign your own velocity curve, please select “User defined” at the end of the drop-down menu.

2.6 User defined curve

Select and assign the fixed velocity curve value from 20-127 to the pads

2.7 3-layer buttons

You may make a different mapping to each of the three layers.



Diagram 27

2.8 Save and Exit button

Click to save and exit the Drum Pad setting window. This will let you return to the main controller assignment panel again.

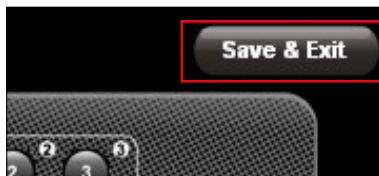


Diagram 28

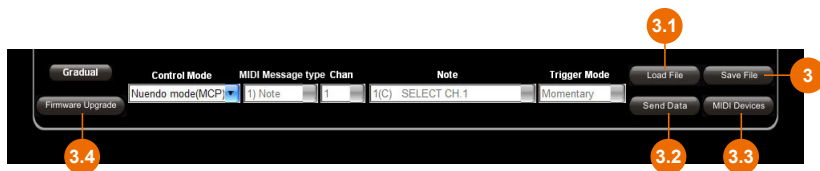


Diagram 29

3. “Save file” button

Click this button to save your current settings for the iConPad. The file is an “.iconpad” file.

3.1 “Load file” button

Click this button to load a previously saved “.iconpad” setting file for your iConPad.

3.2 “Send Data” button

Click this button to upload the iMap™ software settings to your iConPad via USB connection.

Note: You must have connected your iConPad to your Mac/PC, otherwise the settings upload will not be successful.

3.3 “MIDI Devices” button

Click this button, a MIDI device select window will appear as shown in diagram 30. Please select “ICON iConPad” for the MIDI Out Devices.

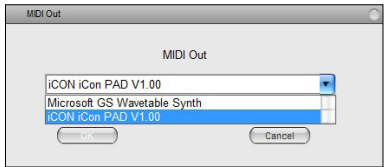
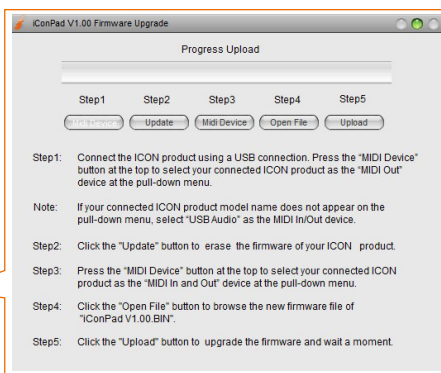


Diagram 30

3.4 “Firmware Upgrade” button

Click this button to enter into the firmware upgrade window for iConPad. Please refer to P.22 for the firmware upgrade procedure.

Firmware upgrade



Step1: Connect the ICON product using a USB connection. Press the “MIDI Device” button at the top to select your connected ICON product as the “MIDI In and Out” device at the pull-down menu.

Note: *If your connected ICON product model name does not appear on the pull-down menu, select “USB Audio” as the MIDI In and Out device.*

Step2: Click the “Update” button.

Step3: Press the “MIDI Device” button at the top to select your connected ICON product as the “MIDI In and Out” device at the pull-down menu.

Step4: Click the “Open File” button to browse the new firmware file.

Step5: Click the “Download” button to upload the firmware.

Warning: *The firmware upload process “MUST” be completed and not be interrupted during the file uploading, otherwise the firmware may not be rewritten again.*

Restore the factory default settings

To restore your iConPad settings to factory default, simply import the “Factory Default” setting file into your iConPad with the original setting of the iMap software.

Specifications

Connector: To computer USB connector (mini B type)
Power supply: USB bus power
Current consumption: 100mA or less
Weight: kg (lb)
Dimensions: 325(L) X 99(W) X 20(H)
..... 12.78"(L) x 3.78"(W) x 0.75"(H)



Appendix A

Nuendo Mode (MCP) - Mackie Control mode function table (Nuendo/Cubase)

Controller	Function
Encoder 1 - 8 (Rotate)	Adjust correspondence channel's pan value
Encoder 1 - 8 (Enter)	Adjust parameters of correspondence channel according to selected function (Pan, EQ, Inserts, Master, FX Sen & VST)
Fader 1-8	Adjust correspondence channel's volume
Fader M	Adjust master channel volume
Button "Sel" 1-8	Select correspondence track
Button "M" 1-8	Mute correspondence track
Button "S" 1-8	Solo correspondence track
Button "Rec" 1-8	Activate record function of the correspondence track
Button "<"	Shift one channel up
Button ">"	Shift one channel down
Button "<<8"	Shift eight channel (Bank) up
Button ">>8"	Shift eight channel (Bank) down
Button "(Loop)"	Activate the loop function
Button "<<"	Activate the rewind function
Button ">>"	Activate the fast forward function
Button "(Stop)"	Activate the stop function
Button "(Play)"	Activate the play function
Button "(Rec)"	Activate the record function

Samplitude Mode (MCP) - Mackie Control mode function table (Samplitude)

Controller	Function
Encoder 1 - 8 (Rotate)	Adjust correspondence channel's pan value
Encoder 1 - 8 (Enter)	Adjust parameters of correspondence channel according to selected function (Pan, EQ, Inserts, Master, FX Sen & VST)
Fader 1-8	Adjust correspondence channel's volume
Fader M	Adjust master channel volume
Button "Sel" 1-8	Select correspondence track
Button "M" 1-8	Mute correspondence track
Button "S" 1-8	Solo correspondence track
Button "Rec" 1-8	Activate record function of the correspondence track
Button "<"	Shift one channel up
Button ">"	Shift one channel down
Button "<<8"	Shift eight channel (Bank) up
Button ">>8"	Shift eight channel (Bank) down
Button "(Loop)"	Activate the loop function
Button "<<"	Activate the rewind function
Button ">>"	Activate the fast forward function
Button "(Stop)"	Activate the stop function
Button "(Play)"	Activate the play function
Button "(Rec)"	Activate the record function

Live Mode (MCP) - Mackie Control mode function table (Abelton Live)

Controller	Function
Encoder 1 - 8 (Rotate)	Adjust correspondence channel's pan value
Encoder 1 - 8 (Enter)	Adjust parameters of correspondence channel according to selected function (Pan, EQ, Inserts, Master, FX Sen & VST)
Fader 1-8	Adjust correspondence channel's volume
Fader M	Adjust master channel volume
Button "Sel" 1-8	Select correspondence track
Button "M" 1-8	Mute correspondence track
Button "S" 1-8	Solo correspondence track
Button "Rec" 1-8	Activate record function of the correspondence track
Button "<"	Shift one channel up
Button ">"	Shift one channel down
Button "<<8"	Shift eight channel (Bank) up

Button ">>8"	Shift eight channel (Bank) down
Button "(Loop)"	Activate the loop function
Button "<<"	Activate the rewind function
Button ">>"	Activate the fast forward function
Button "(Stop)"	Activate the stop function
Button "(Play)"	Activate the play function
Button "(Rec)"	Activate the record function

Logic Mode (MCP) - Mackie Control mode function table (Logic Pro)

Controller	Function
Encoder 1 - 8 (Rotate)	Adjust correspondence channel's pan value
Encoder 1 - 8 (Enter)	Adjust parameters of correspondence channel according to selected function (Pan, EQ, Inserts, Master, FX Sen & VST)
Fader 1-8	Adjust correspondence channel's volume
Fader M	Adjust master channel volume
Button "Sel" 1-8	Select correspondence track
Button "M" 1-8	Mute correspondence track
Button "S" 1-8	Solo correspondence track
Button "Rec" 1-8	Activate record function of the correspondence track
Button "<"	Shift one channel up
Button ">"	Shift one channel down
Button "<<8"	Shift eight channel (Bank) up
Button ">>8"	Shift eight channel (Bank) down
Button "(Loop)"	Activate the loop function
Button "<<"	Activate the rewind function
Button ">>"	Activate the fast forward function
Button "(Stop)"	Activate the stop function
Button "(Play)"	Activate the play function
Button "(Rec)"	Activate the record function

HUI Mode - HUI mode function table (Pro Tools)

Controller	Function
Encoder 1 - 8 (Rotate)	Adjust correspondence channel's pan value
Encoder 1 - 8 (Enter)	Adjust parameters of correspondence channel according to selected function (Pan, EQ, Inserts, Master, FX Sen & VST)
Fader 1-8	Adjust correspondence channel's volume
Fader M	Adjust master channel volume
Button "Sel" 1-8	Select correspondence track
Button "M" 1-8	Mute correspondence track
Button "S" 1-8	Solo correspondence track
Button "Rec" 1-8	Activate record function of the correspondence track
Button "<"	Shift one channel up
Button ">"	Shift one channel down
Button "<<8"	Shift eight channel (Bank) up
Button ">>8"	Shift eight channel (Bank) down
Button "(Loop)"	Activate the loop function
Button "<<"	Activate the rewind function
Button ">>"	Activate the fast forward function
Button "(Stop)"	Activate the stop function
Button "(Play)"	Activate the play function
Button "(Rec)"	Activate the record function

Service

If your iConPad needs servicing, follow these instructions.

Check our online Help Center at <http://support.iconproaudio.com/hc/en-us>, for information, knowledge, and downloads such as:

1. FAQ
2. Download
3. Learn More
4. Forum

Very often you will find solutions on these pages. If you don't find a solution, create a support ticket at our online Help Center at the link below, and our technical support team will assist you as soon as we can.

Navigate to <http://support.iconproaudio.com/hc/en-us> and then sign in to submit a ticket.

As soon as you have submitted an inquiry ticket, our support team will assist you to resolve the problem with your ICON ProAudio device as soon as possible.

To send defective products for service:

1. Ensure the problem is not related to operation error or external system devices.
2. Keep this owner's manual. We don't need it to repair the unit.
3. Pack the unit in its original packaging including end card and box. This is very important. If you have lost the packaging, please make sure you have packed the unit properly. ICON is not responsible for any damage that occurs due to non-factory packing.
4. Ship to the ICON tech support center or the local return authorization. See our service centers and distributor service points at the link below:

If you are located in US

Send the product to:

North America

Mixware, LLC – U.S. Distributor

11070 Fleetwood Street – Unit F.

Sun Valley, CA 91352; USA

Tel.: (818) 578 4030

Contact: www.mixware.net/help

If you are located in Europe

Send the product to:

Sound Service

GmbH European

Headquarter Moriz-Seeler-Straße

3D-12489 Berlin

Telephone: +49 (0)30 707 130-0

Fax: +49 (0)30 707 130-189

E-Mail: info@sound-service.eu

If you are located in Hong Kong

Send the product to:

ASIA OFFICE:

Unit F, 15/F., Fu Cheung Centre,

No. 5-7 Wong Chuk Yueng

Street, Fotan,

Sha Tin, N.T., Hong Kong.

Tel: (852) 2398 2286

Fax: (852) 2789 3947

Email: info.asia@icon-global.com

5. For additional update information please visit our website at:
www.iconproaudio.com



天猫官方旗舰店



天猫店iconproaudio旗舰店

抖音号



抖音iCON艾肯

哔哩哔哩



B站iCONProAudio

中国地区用户

微信公众号



微信号iCON-PRO

官方售后QQ



4006311312.114.qq.com

Twitter



www.twitter.com/iconproaudio

Instagram



www.instagram.com/iconproaudio

Facebook



www.facebook.com/iconproaudio

Youtube



www.youtube.com/iconproaudio

Website



www.iconproaudio.com

Support



support.iconproaudio.com

Dashboard



iconproaudio.com/dashboard/

www.iconproaudio.com