



KEYBOARD

25/37/49/61/88-note velocity-sensitive piano-style keys
USB MIDI controller keyboard

iKeyboard 3



iKeyboard 4



iKeyboard 5







iKeyboard 6



iKeyboard 8



<div style="text-align: center;">  <div style="background-color: black; color: white; padding: 2px; font-weight: bold; margin: 5px 0;">CAUTION</div>  </div> <p style="text-align: center; font-size: small;"> RISK OF ELECTRIC SHOCK DO NOT OPEN RISQUE DE CHOC ELECTRIQUE NE PAS OUVRIR </p> <p style="text-align: center; font-size: x-small;"> CAUTION: TO REDUCE THE RISK OF ELECTRIC SHOCK DO NOT REMOVE COVER (OR BACK) NO USER-SERVICEABLE PARTS INSIDE REFER SERVICING TO QUALIFIED PERSONNEL </p> <p style="text-align: center; font-size: x-small;"> ATTENTION: POUR EVITER LES RISQUES DE CHOC ELECTRIQUE: NE PAS ENLEVER LE COUVERCLE. AUCUN ENTRETIEN DE PIECES INTERIEURES PAR L'USAGER. CONFIER L'ENTRETIEN AU PERSONNEL QUALIFIE. AVIS: POUR EVITER LES RISQUES D'INCENDIE OU D'ELECTROCUTION, N'EXPOSEZ PAS CET ARTICLE A LA PLUIE OU A L'HUMIDITE </p>	<div style="display: flex; flex-direction: column; align-items: center;">   </div> <p style="font-size: x-small;"> The lightning flash with arrowhead symbol within an equilateral triangle is intended to alert the user to the presence of uninsulated dangerous voltage within the product's enclosure, that may be of sufficient magnitude to electric shock to persons. Le symbol clair avec point de flèche à l'intérieur d'un triangle équilatéral est utilisé pour avertir l'utilisateur de la présence à l'intérieur du coffret de voltage dangereux non isolé d'ampleur suffisante. </p> <p style="font-size: x-small;"> exclamation point within an equilateral triangle is intended to alert the user of the presence of important operating and maintenance (servicing) instructions in the literature accompanying the appliance. Le point d'exclamation à l'intérieur d'un triangle équilatéral est employé pour avertir les utilisateurs de la présence d'instructions importantes pour le fonctionnement et l'entretien (service) dans le livret d'instruction accompagnant l'appareil. </p>
---	--

Important Safety Instructions

1. Read this manual thoroughly before using this unit.
2. Keep this manual for future reference.
3. Take notice of and comply with all warnings included in the user's manual or indicated on the appliance.
4. Follow all instructions included in this manual.
5. Do not expose this unit to rain or moisture. Avoid having water or other liquids spilled on this unit.
6. When cleaning the cabinet or other parts of this appliance, use only a dry or slightly damp soft cloth.
7. Do not block any ventilation openings or interfere with the proper ventilation of this unit. Install in accordance with the manufacturer's instructions.
8. Do not use or store near any heat sources such as radiators, heat registers, stoves, or other heat-producing appliances.
9. Do not interfere with the safety purpose of the polarized or grounding-type plug. A polarized plug has two blades with one wider than the other. A grounding-type plug has two blades and a third grounding prong. These are designated for your safety. If the provided plug does not fit into your outlet, consult an electrician.
10. Protect the power cord from being walked on or otherwise damaged by items placed on or against them. Particular attention should be given to the plugs, receptacles, and the point where the cord exits the appliance.
11. To avoid the risk of electrical shock, do not touch any exposed wiring while the unit is in operation.
12. Only use attachments/accessories specified by the manufacturer.
13. Unplug this unit and all connected electrical equipment during lightning storms or when left unused a long period of time.
14. Refer all servicing to qualified service personnel. Servicing is required when the appliance has been damaged in any way or fails to operate normally.

WARNING: To reduce the risk of fire or electric shock, do not expose this unit to rain or moisture

Contents

Introduction 1

What's in the package 1

Features 2

Front Panel Layout 3

Rear panel layout 5

Getting Started 6

Connecting your iKeyboard controller 6

iMap™ Software for Mac OS X..... 6

Installing iMap™ Software for Windows..... 7

Assigning MIDI functions with iMap™ 9

iMap™ iKeyboard software panel 9

Firmware upgrade 12

Restore the factory default settings 13

Specifications 14

Velocity curve 15

Service..... 16

Introduction

Thank you for purchasing the ICON iKeyboard USB MIDI controller keyboard. We sincerely trust this product will provide years of satisfactory service, but if anything is not to your complete satisfaction, we will endeavor to make things right.

In these pages, you'll find a detailed description of the features of the iKeyboard, as well as a guided tour through its front and side panels, step-by-step instructions for its setup and use, and full specifications.

You'll also find a warranty card enclosed - please don't forget to fill it out and mail it so that you can receive online technical support at: www.iconproaudio.com. And so we can send you updated information about these and other ICON products in the future. As with most electronic devices, we strongly recommend you retain the original packaging. In the unlikely event the product must be returned for servicing, the original packaging (or reasonable equivalent) is required.

With proper care and adequate air circulation, your iKeyboard will operate without any trouble for many years. We recommend that you record your serial number in the space provided below for future reference.

Please write your serial number here for future reference:

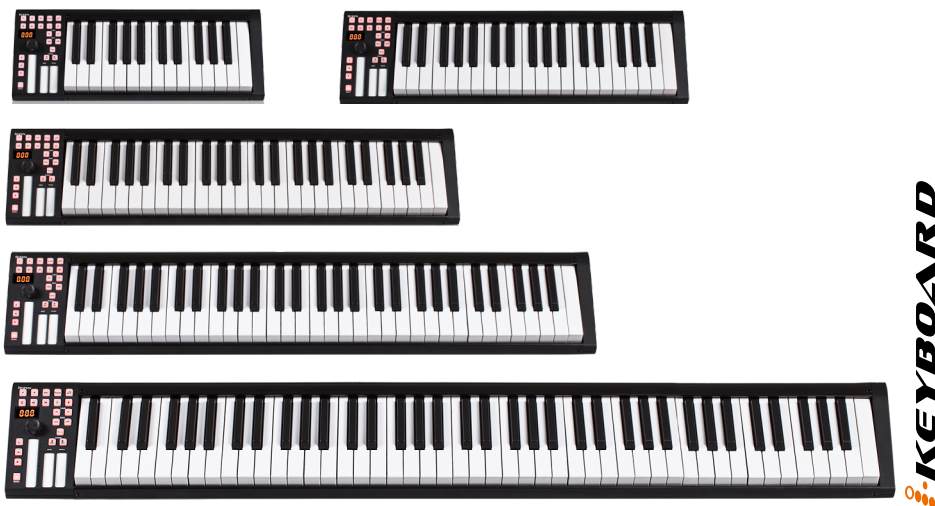
Purchased at:

Date of purchase:

What's in the package

- iKeyboard 3 / iKeyboard 4 / iKeyboard 5 / iKeyboard 6 /iKeyboard 8- 25/37/49/61/88-note velocity-sensitive piano-style keys USB MIDI controller keyboard x 1
- CD x 1
 - App software – iMap (Mac & Windows)
 - User manual & QSG
 - DAW software – Samplitude Pro X2 Silver ICON edition
- Quick Start Guide x 1
- USB 2.0 cable x 1

Features



- Powerful controller is equipped for easy setup with Mackie Control and HUI protocols
- Backlit LED touch fader reacts in real-time with DAW. Synchronizes automatically with different channel value when switching between channels
- Dual function encoder knob (Enter & rotate)
- 11-segment LED surrounding the encoder to indicate the rotating position
- Velocity-sensitive piano style keyboard
- Modulation touchpad
- Pitch touchpad
- 3-segment LED screen
- 18 assignable LED backlit buttons
- Illuminated channel buttons including Rec-enable, Solo and Mute
- 6 illuminated transport buttons including Play, Stop, Rec, Rewind, Fast forward and Loop
- Single Transpose button combines with keys to shift pitch
- Octave up/down buttons
- Multiple velocity curves available for selection
- Midi output jack
- Expression & sustain pedal TRS connectors
- Class-compliant with Windows XP, Vista (32-bit), Windows 7 (32-bit & 64-bit), Windows 8 (32-bit & 64-bit), Windows 10 (32-bit/64-bit) and Mac OS X (IntelMac)
- USB 2.0 high speed connectivity
- Mackie control build-in for Cubase, Nuendo, Samplitude, Logic Pro and Ableton Live
- Mackie HUI protocol build-in for Pro Tools
- iMap™ software included for easy mapping of MIDI functions
- Firmware upgrade available simply via USB connection and iMap software
- Robust metal casing with Kensington lock port

Front Panel Layout



Note: Functions operate slightly differently between DAWs. Please refer to your DAW manual for each function. The following description is based on the functions that operate in Apple Logic.

1. 25/37/49/61/88-note key switches

25/37/49/61/88-note velocity-sensitive piano-action key switches

2. Backlit LED touch fader to control DAW's Channel/Master faders

The touch fader can be used to adjust the parameter of different channels. Press the two "Track or Bank" shifting buttons to shift between channels. Also, by pressing the "Master" button, the fader will change to control the parameters of the master channel.

3. Dual function encoders

The dual functioned encoder acts as a push-button and a rotary control.

When an encoder is pressed, it may be used to change modes of operation or to change what appears in the display above the channel strips. When an encoder is rotated, depending on its assigned function, it can be used to adjust a channel's pan, send level, or plug-in parameters.

4. Encoder LED

The 11-LED's surrounding the encoder lights up to indicate the relative position of the rotation without having to look at your computer.

5. Control buttons

Recording channel control buttons section

REC button - Activate and deactivate the recording state of the associated channel. The switch will light red when the channel is armed.

SOLO button - Activate and deactivate the solo state of the associated channel. The switch will light green when the channel solo state is on and other channels will be muted. You can solo multiple channels by pressing SOLO buttons on additional channels.

MUTE button - Activate and deactivate the mute state of the associated channel. The switch will light red when the channel is muted.

Master button - Switch the touch fader to control the DAW master fader.

Transport control buttons section

PLAY button - Activate the play function of the DAW.

STOP button - Activate the stop function of the DAW.

REC button - Activate the record function of the DAW.

REWIND button - Activate the rewind function of the DAW.

FAST FORWARD button - Activate the fast forward function of the DAW.

LOOP button - Activate the loop function of the DAW.

Automation section

READ button - Press the READ button to activate the read function of the current audio track.

WRITE button - Press the WRITE button to activate the write function of the current audio track.

Other control buttons

Jog Wheel - Activate to use the encoder as a jog wheel. The jog wheel is used for various purposes specific to the DAW application, including shuttle and scrubbing functions.

Program - Use together with the encoder to change the sound bank of your soft-synth.

6. Modulation touchpad

Adjust the modulation effect. It returns to default, "0" when released.

7. Pitch touchpad

Adjust the pitch bend. It returns to default, "0" when released.

8. Octave buttons

Raise or lower the pitches played on your keyboard.

9. Transpose button

Raise or lower the pitches (by less than an octave) played on your keyboard.

***Tip:** While pressing and holding the "Transpose" button, press a keyswitch within an octave range from the original c1 position) to change the c1 to that particular switch.*

***Note:** Only the pitch of the first zone can change if several zones are set.*

10. Track </> buttons

Track < Shift "one" channel up for all faders (except the master channel.)

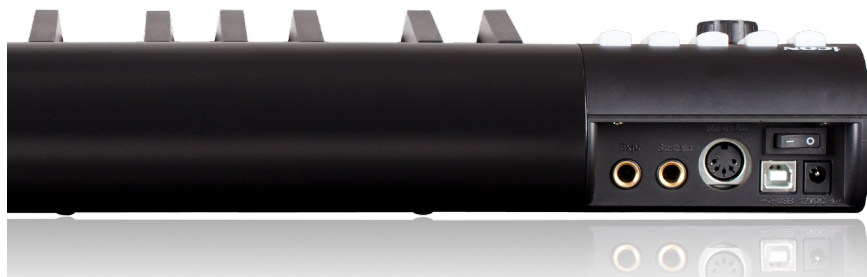
Track > Shift "one" channel down for all faders (except the master channel.)

11. Bank </> buttons

Bank < Shift "eight" channels up for all faders (except the master channel).

Bank > Shift "eight" channels down for all faders (except the master channel.)

Rear panel layout



1. Expression Pedal Input

A standard expression pedal can be connected via this 1/4" input.

2. Sustain Pedal Input

This 1/4" jack can be used to connect a momentary footswitch, like a piano's sustain pedal. (ICON SPD-01)

3. Midi Out Port

Use the MIDI Out terminal to connect an external synthesizer or sound module.

4. USB port

Functions as a MIDI port to your computer and compatible software. Also provides power to your iKeyboard.

5. 12VDC/1A power adapter connector

Connect your 12VDC/1A power adapter (optional) here.

6. Power switch

Power switch for your iKeyboard.

Getting Started

Connecting your iKeyboard controller

1. Connect the ikeyboard to your Mac/PC via the USB port.

Choose a USB port on your Mac/PC and insert the wide (flat) end of the USB cable. Connect the cable's small jack end to the iKeyboard. Your Mac/PC should automatically "see" the new hardware and notify you that it is ready to use.

2. Select & assign the MIDI messages to iKeyboard with iMap software.

Select Mackie Control or HUI mode from the pull down menu for pre-mapped MIDI mapping. Select User Defined mode for self MIDI assignment. Refer to page.9 for "Assign the MIDI messages with "iMap™" software.

Tip: Make sure you have selected the correct DAW mode in the pull down menu.

3. Setup your DAW

Activate the ICON iKeyboard controller in your DAW or MIDI software using "MIDI Setup" or "MIDI Devices".

For Logic™, Cubase™ and Nuendo™, choose Mackie Control at the "Device List".

Note: Every application does this a little different, so refer to your software user manual for the settings.

iMap™ Software for Mac OS X

Please follow the procedures below step-by-step to launch your iMap™ software in Mac OS X

1. Insert the Utility CD in your CD-Rom and double click "iKeyboard" Series iMap" icon.

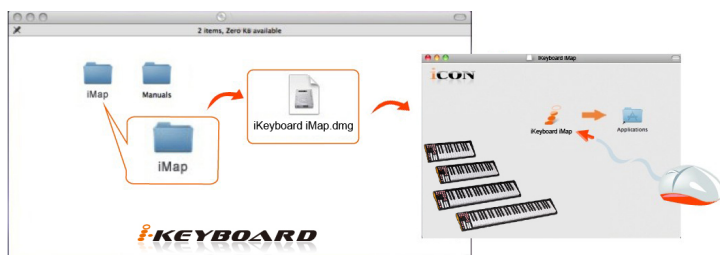


Diagram 1

Tips: By "dragging and dropping" the "iKeyboard" icon into the "Applications" folder, you can create an "iMap" shortcut on your Mac's desktop.

Installing iMap™ Software for Windows

Please follow the procedures below step-by-step to install your iMap™ software.

1. Turn on your PC.
2. Insert the Utility CD in your CD-Rom



Diagram 2

After you have inserted the CD into your CD-Rom, an installation screen should appear as shown in diagram 2 ; click “Install”.

Note: if the installation screen does not appear automatically go to the CD folder and double click on “Setup”

3. Setup Wizard appear



Diagram 3

Setup wizard appears, please click “Next”

4. Choose Install Location



Diagram 4

Choose your preferred install location for iMap™ or use the default location and click “Next”

5. Select shortcut



Diagram 5

Select the start menu folder in which you would like to create the iMap™ shortcut. Then click “Next”.

6. Create a shortcut on your desktop

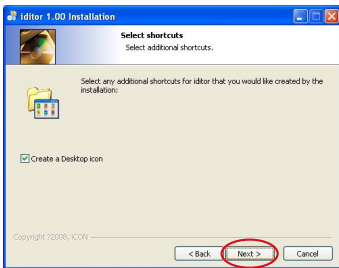


Diagram 6

Uncheck the box if you do not want to place a shortcut icon on your desktop for iMap™, otherwise click “Next”.

7. iMap™ started to install

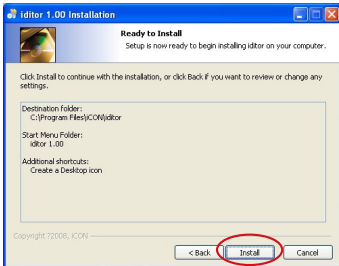


Diagram 7

The iMap™ installation has now started, wait for it to finish. Then click “Finish”.

8. Installation finished



Diagram 8

Click “Finish” to complete the iMap™ software installation.

Assigning MIDI functions with iMap™

You can use iMap™ to easily assign the MIDI functions of your iKeyboard.

Note: If your iKeyboard is not connected to your Mac/PC, the message “There are no MIDI input devices” will appear. Please connect iKeyboard to your Mac/PC with the provided USB cable.

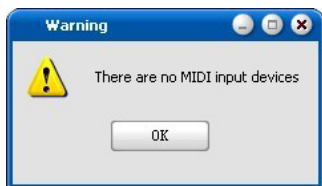


Diagram 9

iMap™ iKeyboard software panel

Note: To start to use your iMap application software. Please select the models name from the pop down menu according to the iKeyboard that you have.



iKeyboard's iMap is divided into two main sections as described below:

1. Keyboard elements assignment

These elements include the key switches, velocity curve, modulation/pitch bend touch pad, Sustain & Expression pedal, Transpose & Octave buttons. These elements are assigned by the top three drop down menus. To assign a control, select it by clicking it and assign a different midi message in the two drop down menus (MIDI Channel & CC).



Diagram 10

1.1 MIDI Channel

Assign MIDI channel from 1-16

1.2 CC value

Assign MIDI CC value from 0-127.

1.3 Velocity Curve

Select the available velocity curve of your keybed. For the different velocity curve diagrams, please refer to P.15.

2. Control surface elements assignment

These elements include all the buttons, the knob and the touch pad. These elements are assigned by the lower four drop down menus and the “Toggle/Momentary” button.

Note: iKeyboard has built-in Mackie Control protocols & HUI for different DAW's such as Cubase™, Samplitude™, Ableton Live™, Logic Pro™ and ProTools™. By selecting the correct DAW and Mackie control (HUI) protocol, iKeyboard automatically maps the major functions to work seamlessly with that DAW.



Diagram 11

2.3

2.1

2.2

2.1 Control Mode

Mackie Control: Select “Mackie Control” for Mackie control protocol

HUI: Select “HUI” for HUI control protocol

User Defined: Set your own midi settings for all the controllers.

Note: In “Mackie Control” mode, settings are fixed and not changeable

2.2 User defined mode (Advanced user)

If you would like to assign your own midi mapping, select “User Defined” mode at the control mode drop down menu. To assign a control, select it by clicking it and assign a different midi message in the three drop down menus. The table below shows the different types of midi messages and their changeable parameters.

MIDI Message Type	Channel	Parameters
Note	1 to 16	-1(C) to 9(G)
CC	1 to 16	0 to 127
Program	1 to 16	0 to 127

2.3 Toggle/Momentary button

Assignable to all the buttons for the control surface.

Toggle – Midi message will be sent and activated once

Momentary – Midi message will stay active.

3. General setting to the keyboard



Diagram 12

3.1 "Save file" button

Click this button to save your current settings for the iKeyboard. The file is an ".ikeyboard" file.

3.2 "Load file" button

Click this button to load a previously saved ". ikeyboard" setting file for your iKeyboard.

3.3 "Send Data" button

Click this button to upload the iMap™ software settings to your iKeyboard via USB connection.

Note: You must have connected your iKeyboard to your Mac/PC, otherwise the settings upload will not be successful.

3.4 "MIDI Devices" button

Click this button for a MIDI device select window to appear as shown in diagram 13. Please select "ICON iKeyboard" for the MIDI Out Devices.



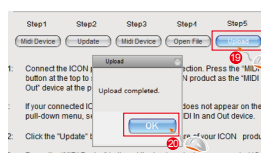
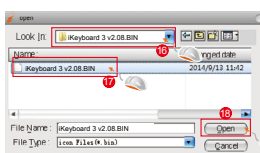
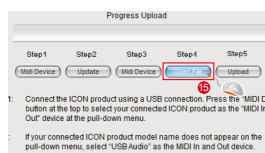
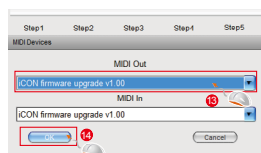
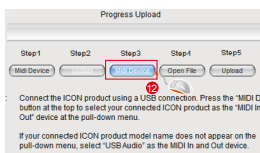
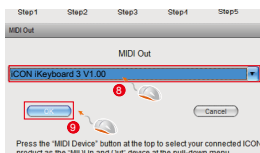
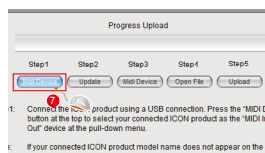
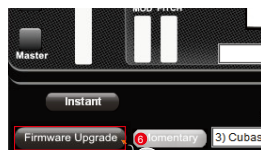
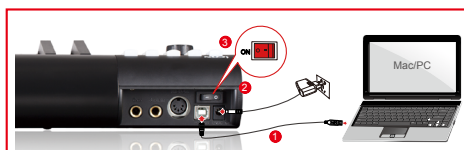
Diagram 13

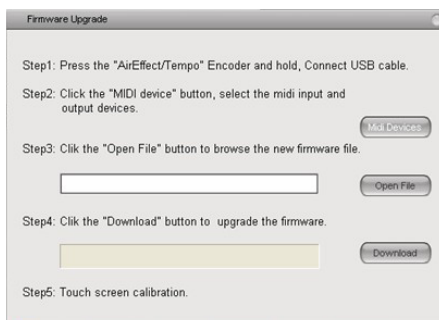
3.5 "Firmware Upgrade" button

Click this button to enter into the firmware upgrade window for iKeyboard. Please refer to P.12 for the firmware upgrade procedure.

Firmware upgrade

iKeyboard functional firmware upload procedure





Step 1 Connect the ICON product using a USB connection. Press the “MIDI Device” button at the top to select your connected ICON product as the “MIDI In and Out” device at the pull-down menu.

Note: If your connected ICON product model name does not appear on the pull-down menu, select “USB Audio” as the MIDI In and Out device.

Step 2 Click the “Update” button.

Step 3 Press the “MIDI Device” button at the top to select your connected ICON product as the “MIDI In and Out” device at the pull-down menu.

Step 4 Click the “Open File” button to browse the new firmware file.

Step 5 Click the “Download” button to upload the firmware.

Warning: The firmware upload process **MUST** be completed and not be interrupted during the file uploading, otherwise the firmware may not be rewritten again.

Restore the factory default settings

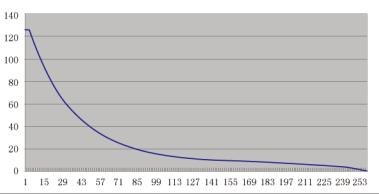
To restore your iKeyboard settings to factory default, simply import the “Factory Default” setting file into your iKeyboard with the original setting of the iMap software.

Specifications

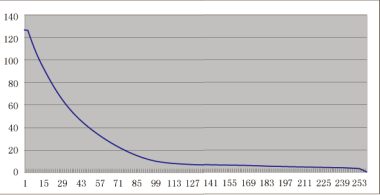
Connector:	USB Sustain & Expression MIDI I/O	USB connector (standard type) 2x1/4" TS connectors 5-pin Din connector
Power supply:		12V/100mA DC
Current consumption:		100mA or less
Weight:	iKeyboard 3 iKeyboard 4 iKeyboard 5 iKeyboard 6 iKeyboard 8	2.135 kg (lb) 2.99 kg (lb) 3.837 kg (lb) 4.675 kg (lb) 6.521 kg (lb)
Dimensions:	iKeyboard 3 iKeyboard 4 iKeyboard 5 iKeyboard 6 iKeyboard 8	476(L)x189(W)x68(H)mm 18.7"(L)x7.44"(W)x2.68"(H) 641(L)x189(W)x68(H)mm 25.4"(L)x7.44"(W)x2.68"(H) 806(L)x189(W)x68(H)mm 31.7"(L)x7.44"(W)x2.68"(H) 971(L)x189(W)x68(H)mm 38.2"(L)x7.44"(W)x2.68"(H) 1349(L)x189(W)x68(H)mm 53.11"(L)x7.44"(W)x2.68"(H)

Velocity curve

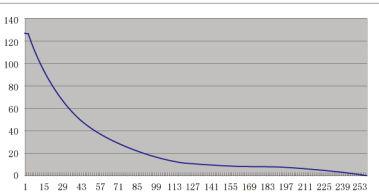
Curve 1



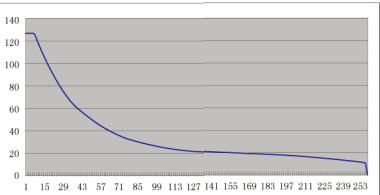
Curve 2



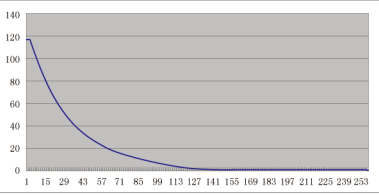
Curve 3



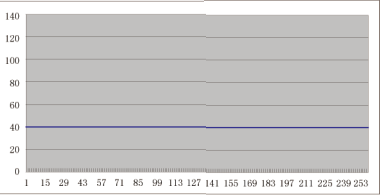
Curve 4



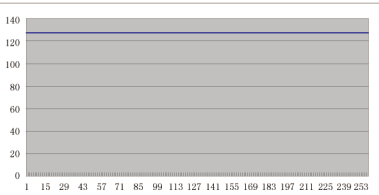
Curve 5



Curve 6



Curve 7



Services

If your iKeyboard needs servicing, follow these instructions.

Check our online help centre at <http://support.iconproaudio.com/hc/en-us>, for information, knowledge, and downloads such as:

1. FAQ
2. Download
3. Learn More
4. Forum

Very often you will find solutions on these pages. If you don't find a solution, create a support ticket at our online ACS (Auto Customer Support) at the below link, and our technical support team will assist you as soon as we can.

Navigate to <http://support.iconproaudio.com/hc/en-us> and then sign in to submit a ticket or click "Submit a ticket" without the need to sign in.

As soon as you have submitted an enquiry ticket, our supporting team will assist you to resolve the problem with your ICON ProAudio device as soon as possible.

To send defective products for service:

1. Ensure the problem is not related to operation error or external system devices.
2. Keep this owner's manual. We don't need it to repair the unit.
3. Pack the unit in its original packaging including end card and box. This is very important. If you have lost the packaging, please make sure you have packed the unit properly. ICON is not responsible for any damage that occurs due to non-factory packing.
4. Ship to the ICON tech support center or the local return authorization. See our service centres and distributor service points at the link below:

If you are located in Honk Kong

Send the product to:

ASIA OFFICE:

**Unit F, 15/F., Fu Cheung Centre,
No. 5-7 Wong Chuk Yueng Street, Fotan,
Sha Tin, N.T., Hong Kong.**

If you are located in Europe

Send the product to:

**Sound-Service Musikanlagen-Vertriebsgesellschaft mbH
Am Spitzberg 3
D-15834 Rangsdorf
Telephone: +49-(0)33708-933-0
Fax: +49-(0)33708-933-189
E-Mail: info@sound-service.eu**

5. For additional update information please visit our website at:
www.iconproaudio.com



www.iconproaudio.com



www.support.iconproaudio.com



www.twitter.com/iconproaudio



www.instagram.com/iconproaudio



www.facebook.com/iconproaudio



www.youtube.com/iconproaudio