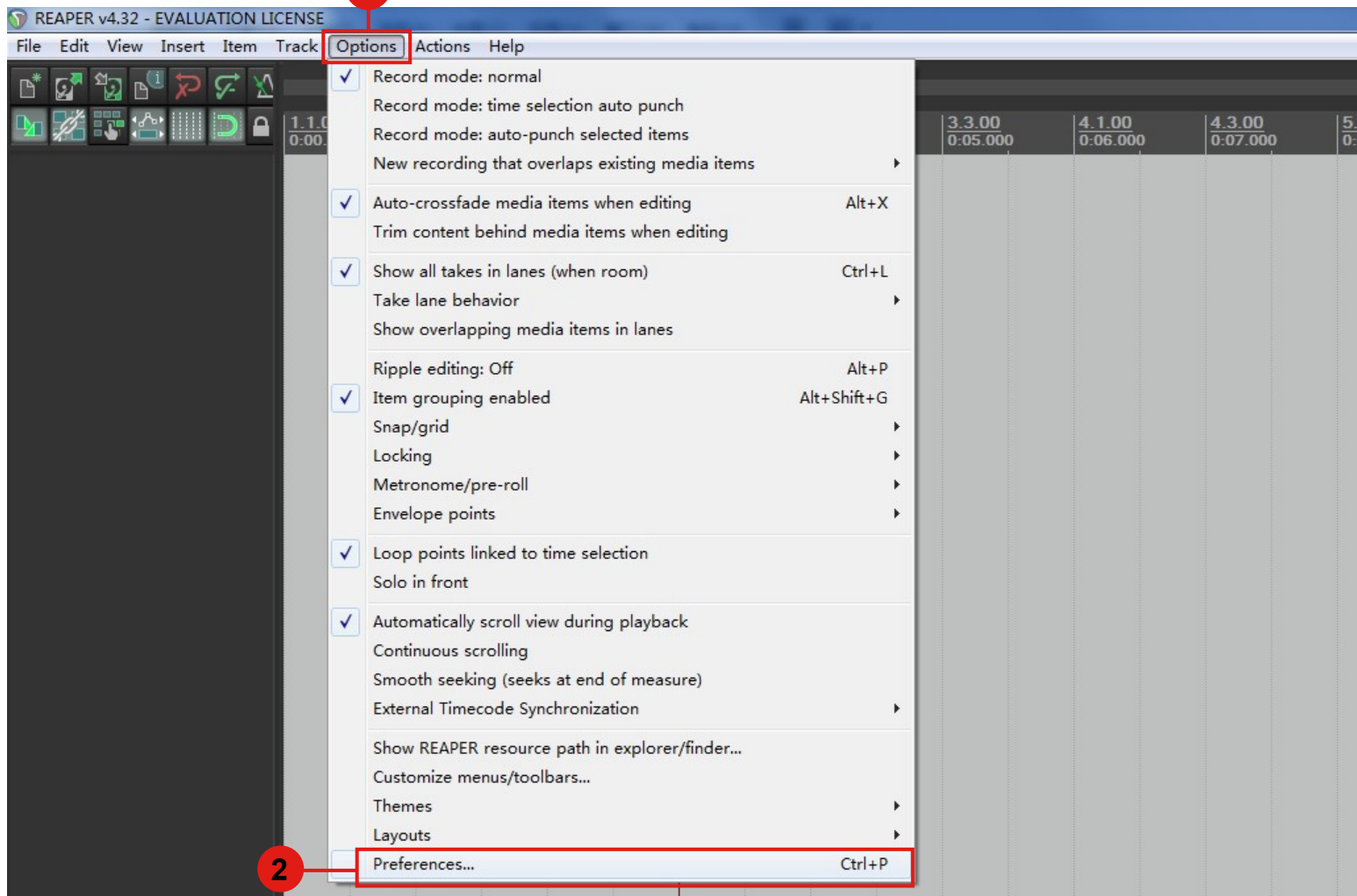
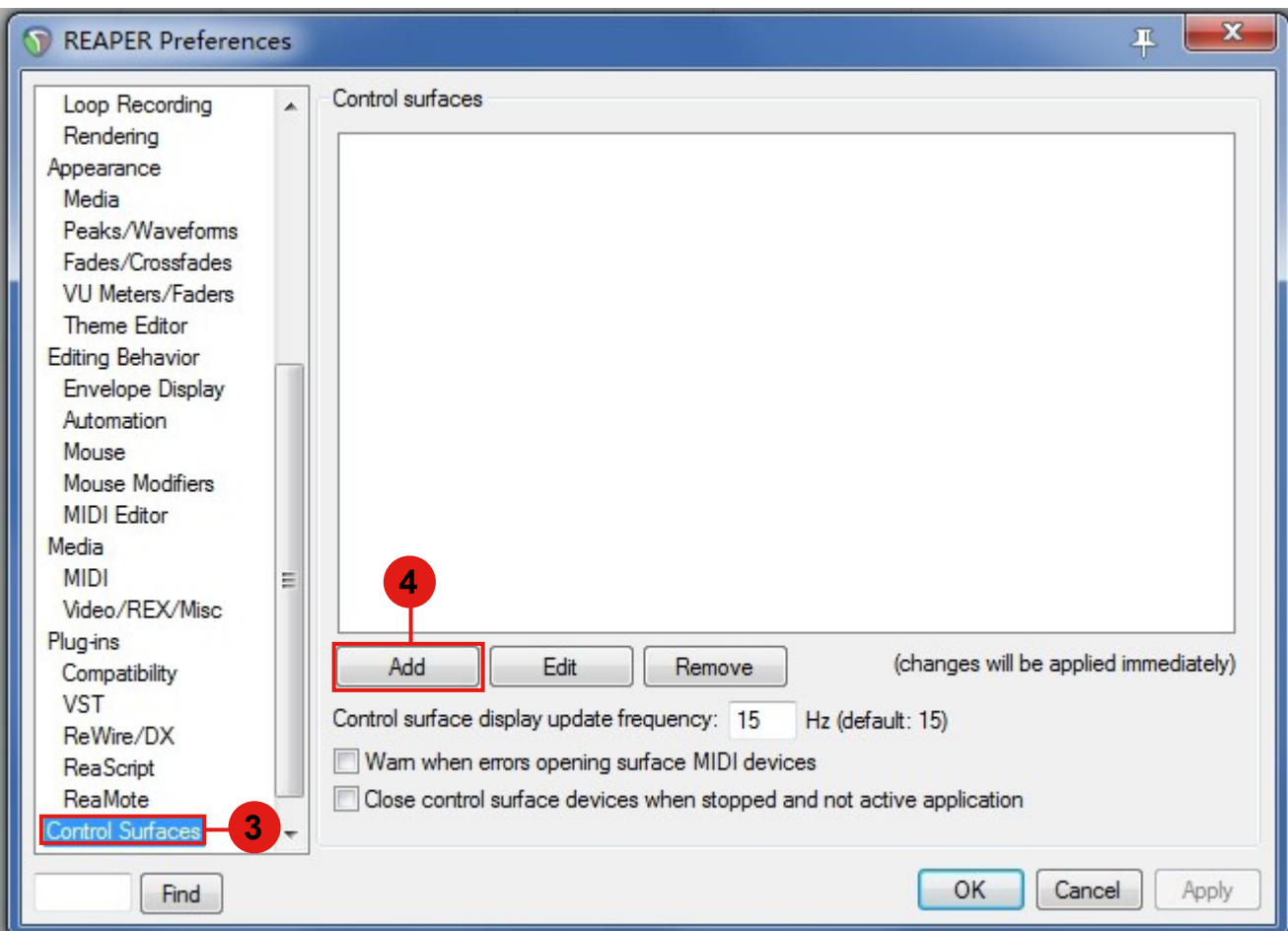


# Setup up for your QCON EX controller section

1



2



4

3

- VU Meters/Faders
- Theme Editor
- Editing Behavior
- Envelope Display
- Automation
- Mouse
- Mouse Modifiers
- MIDI Editor
- Media
- MIDI
- Video/REX/Misc
- Plug-ins
- Compatibility
- VST
- ReWire/DX
- ReaScript
- ReaMote
- Control Surfaces

**Control Surface Settings**

Control surface mode: **Mackie Control Extender** **5**

MIDI input: **iCON QCON EX V1.14** **6**

MIDI output: **iCON QCON EX V1.14** **7**

Surface offset (tracks): 0

Size tweak: 9 (leave at 9 unless you know what you're doing)

**Ignore fader moves when fader is not being touched** **8**

Map F1-F8 to go to markers

**9** **OK** Cancel