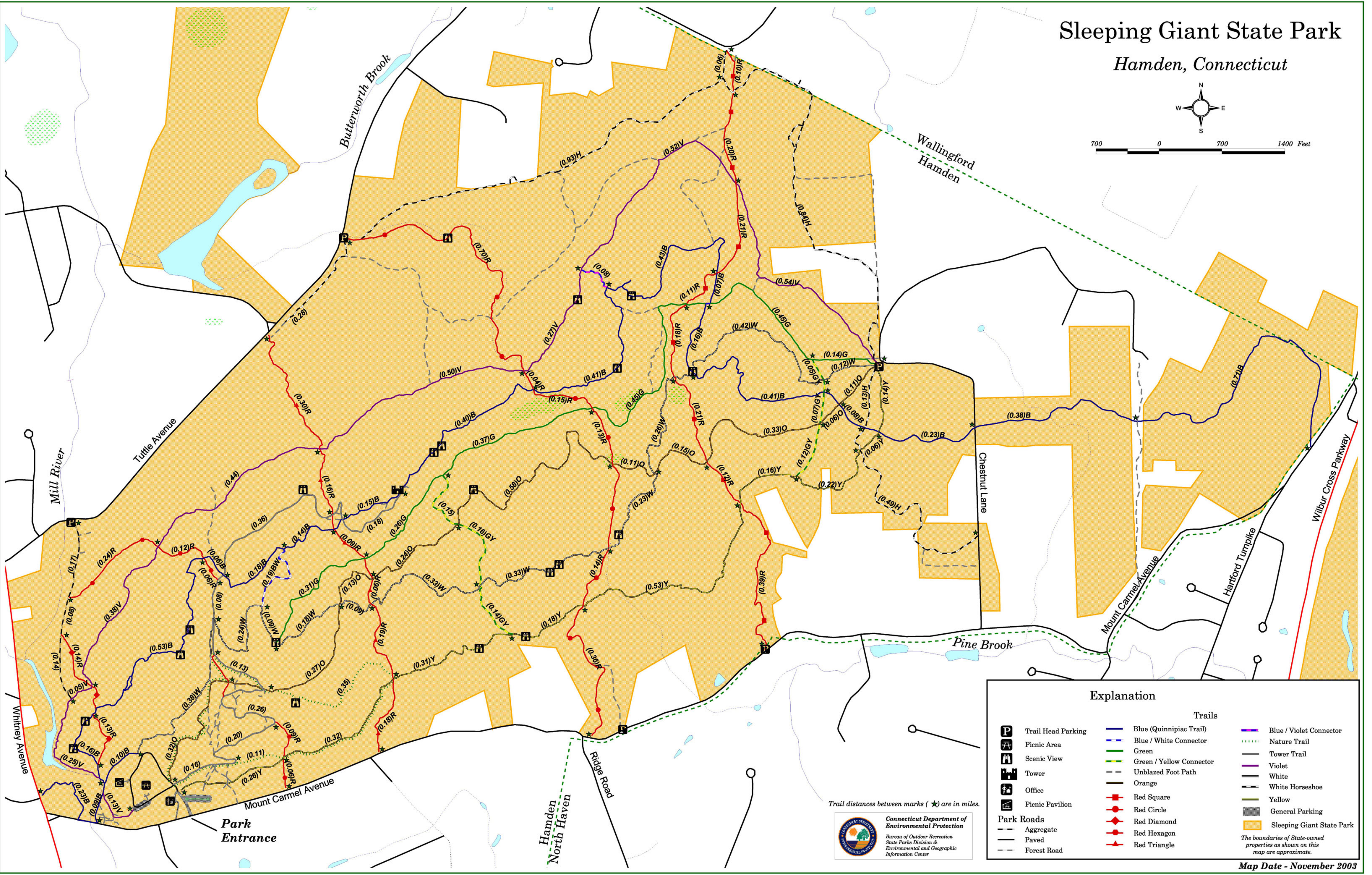


# Sleeping Giant State Park

Hamden, Connecticut

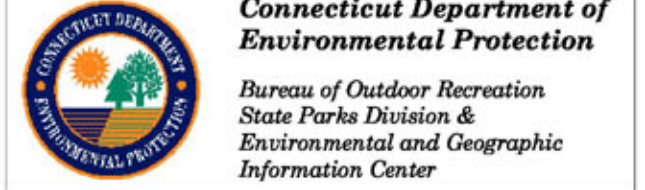


700 0 700 1400 Feet



Explanation		
	Trail Head Parking	
	Picnic Area	
	Scenic View	
	Tower	
	Office	
	Picnic Pavilion	
	Aggregate	
	Paved	
	Forest Road	
	Blue (Quinnipiac Trail)	
	Blue / White Connector	
	Green	
	Green / Yellow Connector	
	Unblazed Foot Path	
	Orange	
	Red Square	
	Red Circle	
	Red Diamond	
	Red Hexagon	
	Red Triangle	
	Blue / Violet Connector	
	Nature Trail	
	Tower Trail	
	Violet	
	White	
	White Horseshoe	
	Yellow	
	General Parking	
	Sleeping Giant State Park	

Trail distances between marks (★) are in miles.



Map Date - November 2003

Park Entrance

Hamden North Haven

Wallingford Hamden

Chestnut Lane

Pine Brook

Ridge Road

Mount Carmel Avenue

Hartford Turnpike

Wilbur Cross Parkway

Whitney Avenue

Tuttle Avenue

Butterworth Brook