



4-H Fair Book
OTSEGO COUNTY FAIR
August 1-6, 2023
MORRIS, NY



CORNELL COOPERATIVE EXTENSION
OTSEGO COUNTY

Education Center

123 Lake Street
Cooperstown, NY 13326
607.547.2536
Fax: 547.5180

Outreach Office

31 Maple Street
Oneonta, NY 13820
607.433.2521
Fax: 436.9682

<http://cceschohanie-otsego.org>

Email: tla47@cornell.edu

The information given herein is supplied with the understanding that no discrimination is intended and no endorsement by Cornell Cooperative Extension is implied.

FOR FAIR ADMISSION PRICES AND CAMPING REGISTRATION PLEASE
REFER TO THE OTSEGO COUNTY FAIR BOOK

<https://www.otsegocountyfair.org/>

We reserve the right to make any changes to this publication.



4-H Otsego County PRE-Fair Schedule 2023



SATURDAY, JULY 8

Fair Entry Workshop, 10am, Martin Hall. Learn everything you need to know about filling out entry forms and how to exhibit your 4-H projects at the fair, both animal and non-animal.

SATURDAY, JULY 15

Entry Forms for Martin Hall exhibits and Dog Show entries are due to the 4-H Office, 123 Lake Street, Cooperstown, NY 13326

(MUST BE ORIGINALS, NO SCANNED OR PICTURES OF FORMS WILL BE ACCEPTED)

BEFORE 4 p.m. Entry Forms for all 4-H animal exhibits, are due to the 4-H Office OR Entry Clerk's Office, County Fairgrounds, Morris, NY 13808. Martin Hall Entry Forms will be accepted at the Fairgrounds.

SATURDAY, JULY 15

4-H Fair Clean Up Day, Animal Barns, Show Rings and Martin Hall, Morris Fairgrounds, Potluck Lunch, 10-2 P.M.

SATURDAY, JULY 22

Otsego County 4-H Dog Show, 4276 St Hwy 51, Garrattsville, 10 A.M.

SUNDAY, JULY 30

- **State Vet** will be on the grounds:
 - **Sunday 8:30am-10:30 (GOATS ONLY), 10:30-1:30 (All Other Species)**
 - Monday 9am-6:00pm
 - All livestock **MUST ARRIVE** on the fairgrounds during these hours. Animals arriving outside of these hours will be **IMMEDIATELY SENT HOME**. No animals are to be unloaded until checked by the State Vet. These requirements will be strictly enforced.
- **Cattle Gate** will be an exit only for animal check in days.
- **Animal Trailers** will use the front gate and go down Cattle Drive (by Martin Hall) and get in line for the State Vet to check in your animals (please see attached map).
 - The trailer driver must have all the correct paperwork for the animals to be unloaded.

- Reminder to make sure your animal registration numbers match their paperwork.
 - Once animals are checked in, trailers will have 20 minutes to unload.
 - Once unloaded the trailers will exit the cattle gates.
 - If your trailer is staying the week of fair, you will exit the cattle gate and come back in and park your trailer in the parking lot.
- If you are bringing, just tack in you will be directed to park in the infield and there will be a shuttle for your tack to the barns.

1–4 p.m. 4-H Martin Hall, Evaluation non-animal 4-H projects
 When bringing 4-H projects to be evaluated please do not park at Martin Hall

MONDAY, JULY 31

- **State Vet** will be on the grounds:

- **Monday 9am-6:00pm**

5:00 p.m. 4-H Fair Superintendents meeting – Martin Hall
 7:00 p.m. All Exhibits in place
 7:00 p.m. 4-H Exhibitor Meeting in Livestock Show Ring
 Ice Cream provided by the Otsego County Farm Bureau

Tuesday	Wednesday	Thursday	Friday	Saturday	Sunday
10am - 4H Dairy Show	8am- Open/4H Rabbit Show	9am- Open/4H Swine Show	9am- Open Dairy Show	9am- Open Gymkhana	11am- 4H Supreme Master Showman
	9am- 4H Gymkhana	9am- 4H Goat Show	9am- Open Hunt seat	12pm- Parade of Champions	
	10am- 4H Open Chicken Show	9am- 4H Western/English	1pm- Open Western	3pm- Livestock Auction	
	10:30am- Draft Horse Show	1:30pm- 4H Beef Show	4pm- Open Beef Show		
	1pm- 4H Sheep Show		4pm- Open Sheep Show		



4-H Otsego County Fair Week Schedule 2023



The 4-H Office is located in Martin Hall and will be staffed fair week 10 a.m.-9 p.m.

NOTE: Livestock Gate is closed from 9 a.m. - 5 p.m. during the fair.

TUESDAY, AUGUST 1

8 a.m.	Gates Open - buildings open at 10 a.m.
10 a.m.	4-H Dairy Show
10-noon	4-H Photo Activities - Martin Hall
1-3 p.m.	4-H Community Service Sewing Activities - Martin Hall
3-4 p.m.	4-H Healthy Snacks Activities/CCE Nutrition Educator - Martin Hall
4-6 p.m.	4-H Gardening Activities/CCE Master Gardeners
6 p.m.	4-H Dairy Challenge Contest-Martin Hall
6:30 p.m.	4-H Weigh-in of 4-H Livestock Auction animals
6-8 p.m.	4-H Science Activities - Martin Hall

WEDNESDAY, AUGUST 2

8 a.m.	4-H & Open Rabbit Show-Gilbert Hall
9 a.m.	4-H Gymkhana-Horse Show Ring
10 a.m.	4-H & Open Poultry Show - Gilbert Hall
10-noon	4-H Photo Activities - Martin Hall
1 p.m.	4-H Sheep Show – Sheep Ring
1 p.m.	4-H Dairy Judging Contest– Livestock Show Ring
1-3 p.m.	4-H Community Service Sewing Activities - Martin Hall
3-4 p.m.	4-H Healthy Snacks Activities/CCE Nutrition Educator - Martin Hall
4-6 p.m.	4-H Agricultural Activities-CCE Agriculture Educator-Martin Hall
6-8 p.m.	4-H Public Presentations - Martin Hall
6-8 p.m.	4-H Science Activities - Martin Hall
7:00 p.m.	Fireman’s Parade-4-H Floats judged infield at 6:00 p.m.

THURSDAY, AUGUST 3

9 a.m.	4-H Western & English Horse Show – Horse Show Ring
9 a.m.	4-H & Open Swine Show
9 a.m.	4-H Goat Show
10-12 noon	4-H Photo Activities - Martin Hall
1-3 p.m.	4-H Community Service Sewing Activities - Martin Hall
1:30 p.m.	4-H Beef Show-Livestock Show Ring
3-4 p.m.	4-H Healthy Snacks Activities/CCE Nutrition Educator - Martin Hall
4-6 p.m.	4-H Gardening Activities/CCE Master Gardeners-Martin Hall
6-8 p.m.	4-H Science Activities - Martin Hall
7 p.m.	4-H Clothing & Textiles Revue - Martin Hall

FRIDAY, AUGUST 4

10-noon	4-H Photo Activities - Martin Hall
1-3 p.m.	4-H Community Service Sewing Activities - Martin Hall
3-4 p.m.	4-H Healthy Snacks Activities/CCE Nutrition Educator- Martin Hall
4-6 p.m.	4-H Agricultural Activities/CCE Agriculture Educator-Martin Hall
6-8 p.m.	4-H Science Activities - Martin Hall
6:30 p.m.	4-H Weigh-in of 4-H Livestock Auction animals
7 p.m.	4-H Variety Show – Martin Hall

SATURDAY, AUGUST 5

10-12 p.m.	4-H Photo Activities - Martin Hall
1-3 p.m.	4-H Community Service Sewing Activities - Martin Hall
12 p.m.	4-H Parade of Champions – Livestock Ring
3 p.m.	4-H Livestock Auction – Livestock Show Ring
3-4 p.m.	4-H Healthy Snacks Activities/CCE Nutrition Educator - Martin Hall
4-6 p.m.	4-H Gardening Activities/CCE Master Gardeners-Martin Hall
6-8 p.m.	4-H Science Activities - Martin Hall

SUNDAY, AUGUST 6

State Fair animal and non-animal entries are due.

11 a.m.	4-H Supreme Master Showman Contest-Livestock Show Ring
1 p.m.	The Great 4-H Cook-Off Contest – CCE Nutrition Educator-Martin Hall
1 p.m.	4-H Leaders, Re-Enrollment – Martin Hall
8 p.m.	The fair closes, Martin Hall exhibits released.

SUNDAY 4-H RELEASE TIME SCHEDULE:

Please note, any 4-H Exhibits that leave before the scheduled time, WILL forfeit all premiums.

6:30 p.m.	Large Animals (Cattle)
7:30 p.m.	Sheep, Swine
8 p.m.	Poultry, Rabbits, Goats
8 p.m.	Non-animal exhibits in Martin Hall
8:30 p.m.	Horses

2023 State Fair

<https://nysfair.ny.gov/>



AUGUST 23 thru SEPTEMBER 4, 2023

Otsego County Fair 4-H

GENERAL RULES AND REGULATIONS

All rules and regulations published in this book are a part of the conditions under which all entries are accepted. The Otsego County Fair Association, Inc. and the Cornell Cooperative Extension 4-H Youth Development Program Staff (Management) will manage the Otsego County Fair. Management has the authority to address and determine any final decisions. The Management reserves the right to amend or add to these rules and regulations.

Any person who violates any of the following general rules and regulations or any special rules may forfeit all privileges and premiums.

Eligibility

ALL 4-H Entries, animal and non-animal **MUST** be pre-registered on the 4-H Entry Form according to the deadline date.

A signed 4-H Fair Code of Conduct **MUST** be submitted with the 4-H Entry Form(s)

All Otsego County 4-H members enrolled on or before January 1 of the current year are eligible to exhibit as part of the Otsego County Fair 4-H Youth Development. New 4-H members must be enrolled by **May 31** of the current year.

4-H projects made, raised or grown during the current 4-H Year, October 1 through the start of the fair, are eligible for exhibit. The returning 4-H member must be enrolled in the correct 4-H project and have notified the Otsego County 4-H office of enrollment by December 31 of the current year. New 4-H members must be enrolled by **May 31** of the current year.

Items made as school projects or through other organizations are not acceptable for 4-H evaluation.

Non-perishable, non-animal exhibits may be entered in up to two project areas if the 4-H member has completed that exhibit as part of both projects. For example, if a 4-H'er turned a lamp in the woodworking project *Finishing it Up* and then wired the lamp in the electricity project *Magic of Electricity*, it could be entered under both of those project titles. The exhibit must have an entry card for each project area. No entry may be exhibited under more than two project areas.

To enter exhibits in 4H Youth Development Classes at the Otsego County Fair entries must be entered on 4-H Entry Forms (full sheet in the fair book) and green exhibit CARD (1/2 page, green from offices and fairgrounds) All forms must be signed by a parent or guardian and the 4-H Club Organizational Leader. Late and incomplete entries may not be accepted.

Each non-animal exhibit must have a completed Entry CARD securely attached to the entry.

This must include the correct Section Letter and Class Number. Entry Cards are available at the Extension offices in Cooperstown or Oneonta, the Fair Entry Clerks office in Morris. Entry

CARDS are to be completed by the 4-H member prior to arrival at the Fair. **Each non-animal**

exhibit must be accompanied by the ½ sheet Entry Card. Animal exhibits must have a completed cage or stall card attached to the animal's cage or stall. These animal cards are available from the 4-H office.

Display of Exhibits

Non-animal exhibits are displayed by project area in Martin Hall. This includes Cloverbud 4-H Club exhibits which will be displayed in a special 4-H Cloverbud exhibit area. Animal exhibits are displayed in designated barns as specified by Superintendents. Only those exhibits that were made and/or grown in the current year as an official 4-H project can be shown for a premium. Please bring exhibits ready to be displayed (include hangers, tacks, etc.).

All exhibits must arrive at the County Fair in Morris according to the schedule and remain in place until the official release time.

Exhibits not picked up at the close of the fair on Sunday evening/Monday morning may be disposed of at the discretion of management.

Permission MUST be given for animals to be in Martin Hall.

Evaluation

- 4-H'ers have the opportunity and are strongly encouraged, to interact with the evaluators during the evaluation process to better understand the award received and fully benefit from this educational process.
- Cash premiums and ribbons are provided by the Fair Board/AG and Markets. It is at the evaluator's discretion to decide if the exhibit is worthy of an award. **4-H Premium checks will be distributed after the County Fair.**
- All 4-H exhibits will receive premiums using a point system. Total points are given in the entire 4-H department will be divided into total funds available to determine the value per point. Each exhibitor's accumulated points will be multiplied by this figure to determine individual Fair awards. A blue ribbon is awarded the same number of points regardless of whether it is received for an animal or non-animal exhibit.

Entry onto Fair Grounds

- Admission to the Fairgrounds will be by ticket only.
- No admission will be charged on the Monday prior to the start of the Fair.
- Parking is available on the fairgrounds within designated areas. You may drop off exhibits at Martin Hall. Do **NOT** park in the roadway at any time! This includes Sunday prior to the opening of the Fair during evaluations in Martin Hall. Those not abiding by this request may be towed at their expense.
- The livestock gate will be closed from 9 a.m. - 5 p.m.

Liability

- Every possible protection and courtesy will be extended to exhibitors at the Otsego County Fair, but the management shall not be responsible for lost exhibits, animals or equipment and will not assume any liability for personal injury.

Open Classes

- 4-H members may enter both animal and non-animal exhibits in open shows if classes permit.
- Information may be obtained from the County Fair Entry Clerk, c/o Otsego County Fair, Morris, NY 13808 or call 607.263.5289 or 5285.
- Open Fair Book, online only: <http://www.otsegocountyfair.org/>

Code of Conduct

- All 4-H members are expected to abide by all Otsego County Fair and 4-H Youth Development rules and display appropriate attire and act with a mature and morally responsible attitude, recognizing the basic rules of society and the common rights of others. Drugs, alcohol, and tobacco are not permitted and will not be tolerated.
- A signed 4-H Fair Code of Conduct MUST be submitted with the 4-H Entry Form(s)
- 4-H members are expected to follow the 4-H Code of Conduct at all times.
- If necessary, disciplinary action may result in the exclusion from 4-H participation and forfeiture of premium money.

Other expectations

- Read this entire 4-H Fair Book and participate according to all guidelines.
- All 4-H members and their parents or guardians must complete, sign and turn in with their entry forms the **4-H Code of Conduct Agreement**.

4-H CLOVERBUD GENERAL RULES AND REGULATIONS

4-H Cloverbuds, the youngest participants in the 4-H Club Program, are enthusiastic, curious, creative, robust and the resilient young people who are growing physically, cognitively, socially and emotionally through a period of rapid and often uneven development. The 4-H Cloverbud Program has been designed to meet the very special needs of these 5 to 8-year olds. The New York State Cloverbud Policy specifies a Cloverbud must turn 5 by January 1 of the 4-H club year.

Safety - Safety is always a concern in any program that involves youth. It is of particular importance when working with 4-H Cloverbuds (children develop mentally in the kindergarten to third-grade level). When working with this audience and animals, it must be remembered that the safety of the youth is the primary concern and objective. The developmental levels of 4-H Cloverbuds may limit their ability to work safely in some project areas. Care must be taken not just with animals, but also with any 4-H Club activity that may include animals, large equipment, certain outdoor activities (games and athletic activities, water activities, etc.) or other situations where the safety of youth would be an issue.

Recognition – For 4-H Cloverbuds, recognition should be informal and equal for all participants. Cloverbuds may not be competitively evaluated against one another, against older youth or participate in any class that ranks the child or their project animal. Cloverbuds can receive a participation ribbon; a prize or other fun token that indicates every child is a winner! Expensive trophies, Danish ribbons, and financial rewards are inappropriate.

Competition - Competition takes the emphasis away from the process and puts it on the end product. Young children are fascinated with the process of accomplishing a task. Placing importance on the result rather than the process is in direct conflict with what is important to children in this developmental stage. The absence of competition reduces the importance of the outcome and frees each child to simply enjoy the experience of playing and learning. Research indicates that children under age 8 are not developmentally ready to participate in structured peer competitive events. "Exhibition Only" means neither youth nor projects are ranked or placed. All participants are equally praised for their accomplishments in a show & tell type setting.

CLOVERBUD 4-H MEMBER EXHIBIT AREAS

4-H PROJECTS/ENTRIES

4-H Cloverbuds may enter their 4-H projects in the Cloverbud category

4-H Cloverbuds are not judged. Cloverbuds will speak with evaluators and become familiar with the process of evaluation.

All Cloverbuds will receive a ribbon of participation.

Each 4-H Club Organizational Leader in cooperation with the 4-H Cloverbud member's parents or guardians should make a decision about whether or not this an appropriate level of participation for the individual 4-H Cloverbud.

CLOVERBUD 4-H CLUB DISPLAY - a showcase of your 4-H Cloverbud Club

4-H Clubs must pre-register on the Martin Hall entry form.

Each Cloverbud 4-H Club will be assigned a display area which is approximately 4' deep x 8' long

This is an educational display

The Cloverbud 4-H Club will receive a monetary award for their participation.

4-H CLOVERBUD SHOWMANSHIP - 4-H Cloverbuds will be allowed to participate in a special 4-H Cloverbud Showmanship Class for any animal species except horse.

- All class participants will receive a participation ribbon. Participants will not be placed and monetary awards will not be given. This is a participation class, not a competition class.
- The 4-H Cloverbuds must have worked with the animal during the current 4-H Club year. The 4-H Cloverbud must be able to control the animal: halter and lead line are required where appropriate.
- **Older 4-H members or an adult helping in the show ring is mandatory.**

4-H Herdsmanship Guidelines and Information

Clifford Drake, President of the Otsego County Fair from 1970 to 1981, was an active supporter of Herdsmanship at the Otsego County Fair. He stressed the importance of maintaining the animals and the barns in a manner that expressed a warm welcome to the fair attendees. Class numbers are under each species.

Purpose

Herdsmanship is to encourage 4-H animal exhibitors to maintain clean, attractive, educational displays. Good Herdsmanship will favorably promote the 4-H programs to the public.

Duties

Herdsmanship duties should be done by the 4-H'er to the extent that they are capable. Adults may help with tasks that 4-H'ers are not capable of doing on their own. 4-H'ers should be available to answer questions during the morning hours of Herdsmanship judging but are encouraged to be available to answer questions from the public throughout the day. 4-H'ers are not expected to be in the barn when they are showing. Watch for posters that will give the species schedule.

Herdsmanship judging will take place on Tuesday, Wednesday, Thursday, and Friday. Standards will be upheld through the entirety of the fair. If you aren't seen by a judge during the week, you won't receive a ribbon.

Scoring

Using the Danish System, all 4-H'ers will be evaluated in the following areas daily (1-4), one score for the week for numbers 5 & 6.

cleanliness and neatness of stalls or cages

availability of food and water to the animal

cleanliness of aisles

4-H exhibitor's appearance and availability to the public

4-H'ers ability to answer questions regarding his or her animals will be given one score for the week.

general appearance content of displays and information, including a 4-H stall card

Scoring for each of the above areas will be as follows: Points assigned

below average - 0 points

average - 1 point

above average - 2 points

exceptional - 3 points

Each day, each 4-H'er will receive a single score for categories 1-4. The maximum score for each day is 12. Daily scores will be averaged and added to scores from categories 5 & 6 to arrive at a final score. Ribbons and premiums will be based on the following ranges:

average - White

above average - Red

exceptional - Blue

Ribbons

Ribbons will be awarded on the weekend (TBA) by species superintendent.



RICHARD A. BALL
Commissioner

Animal Health Requirements For Admission to New York State and County Fairs

(Part 351 of NYS Agriculture and Markets Regulations)

NYS Department of Agriculture and Markets/Division of Animal Industry
10B Airline Drive, Albany, NY 12235 | 518-457-3502 | www.agriculture.ny.gov/animals

Contents

- General Prohibitions and Requirements
- Certificates of Veterinary Inspection
- Animal Identification
- Rabies Vaccination
- BVD-PI Testing
- Cleaning and Disinfection
- Animal Deaths
- Calving, Kidding, and Lambing
- Commingling of Sheep and Cattle
- Commingling of Swine and Poultry
- Isolation on Returning Home
- Individual Species Requirements
 - Horses
 - Cattle
 - Sheep
 - Goats
 - Swine
 - Llamas and Alpacas
 - Poultry
 - Deer/Elk
 - Miscellaneous Ruminants
- Exhibitor Pre-fair Guidelines

General Prohibitions and Requirements

- No person shall bring or have present an animal on the fairgrounds for any reason (show, exhibit, raffle, demonstration, display) during a fair which is not qualified under NYS regulations.
- No person shall present an interstate or intrastate certificate of veterinary inspection that has been altered by anyone other than the issuing veterinarian.
- Animals demonstrating clinical signs or other evidence of infectious, contagious, or communicable diseases shall not be allowed on the fairgrounds during a fair.
- Representatives of the Commissioner may deny admission to, or require removal from, the fair premises or require the segregation of any animal showing signs of, or exposed to, any infectious, contagious, or communicable disease.

NOTE: The fair board of directors has the authority to reject unworthy or unsightly exhibits for reasons other than infectious, contagious, or communicable disease (Part 350.10). The state veterinarian or animal health inspector will bring questionable exhibits to the attention of the fair board.

- All animals presented that originate from a location other than New York shall meet all New York State importation regulations appropriate to the species in addition to the fair animal health requirements.

Certificates of Veterinary Inspection (CVI)

- Cattle, sheep, goats, swine, llamas, alpacas, deer, and misc. ruminants require a valid CVI to enter the fairgrounds.
- The CVI must be issued by a Category 2 accredited veterinarian. Wet ink signatures for paper CVIs or e-signature for eCVIs are acceptable.
- All animals must be officially identified. **ALL MANMADE ID MUST BE RECORDED.** Refer to Animal Identification section below for more information.
- Only one species is allowed per certificate.
- The type and duration of certificate required depends on the origin of the livestock.

New York Origin Livestock:

- A valid intrastate CVI (AI-61) is required.
- Each animal must be individually identified on the CVI (see below).
- The CVI must be issued on or after May 1 of the current year.

Out of State Origin Livestock:

- All animals entering New York State must satisfy import health and test requirements for that species and be accompanied by a valid interstate CVI.
- An e-CVI may be issued but a paper copy of the e-CVI is required for the animal check-in process.
- The interstate CVI is valid for 30 days from the date of CVI inspection. During the fair season (July 1 through Labor Day) valid CVI's can be used multiple times for entrance into fairs. The initial entrance into a NY fair must be within 30 days of the date of CVI inspection. In order for the CVI to be used for a later fair, it must be dated and initialed by a NYS Agriculture and Markets official noting the location of the initial fair. A change in health status or eligibility of an animal necessitates the generation of a new CVI.

Questions regarding import requirements should be directed to the Division of Animal Industry at 518-457-3971, or at the division's import/export homepage:

<https://agriculture.ny.gov/animals/animal-import-export>

Animal Identification

- **ALL MANMADE ID MUST BE RECORDED**
- Cattle must be identified by an official USDA approved ear tag. Radio frequency identification (RFID) ear tags, commonly referred to as "840 RFID tags," are strongly recommended.
- Sheep and goats must be identified by official scrapie identification (see sheep and goat sections below).
- Swine must be identified by an official USDA approved ear tag. Radio frequency identification (RFID) ear tags, commonly referred to as "840 RFID tags," are strongly recommended. Nursing piglets do not have to be individually identified if the sow is correctly identified on the CVI and the number of piglets in the litter is noted on the CVI.
- Llamas and alpacas must be identified by official ear tag or microchip.
- Misc. ruminants must be identified by unique ear tag or microchip.
- A complete written description is sufficient identification for horses entering New York accompanied by a CVI. The description must match the EIA test record. Horse sketches and descriptions should reference color pattern, hair whorls,

chestnuts, scars, and other markings as necessary to uniquely identify the horse. Tattoos and microchips if any should be included. "Bay, no markings" is not an acceptable description for a CVI or EIA test record.

- NOTE: If you are exhibiting animals identified by microchip, a working reader must be supplied by the exhibitor.
- For questions on animal identification please contact your veterinarian or our office at 518-457-3502.

Rabies Vaccination

- Rabies vaccination is required for all species for which there is a USDA licensed vaccine available (cattle, horses, sheep, dog, cat, ferret) and that are 4 months of age or older on the date of admission to the fair.
 - For most rabies vaccines, the earliest age allowable for primary vaccination is 3 months. Animals that are vaccinated prior to 3 months of age will need to be re-vaccinated according to label before entering the fairgrounds.
- Vaccine must have been administered within the past 12 months. The exception is Imrab LA vaccine used in sheep which protects for 3 years after the second annual vaccination (consult your veterinarian).
- The rabies vaccination requirement must be met on the day of admission even if the animal was previously admitted to a fair when too young to vaccinate.
- NOTE: Individual fairs can require animals for which there is no approved rabies vaccine to be vaccinated for rabies. The requirements outlined above would apply. The fair is responsible for notifying exhibitors. The New York State Fair requires rabies vaccination for all livestock species entering the grounds.

Acceptable Proof of Rabies Vaccination

- Acceptable proof of rabies vaccination must include a signed written statement from the veterinarian administering the vaccine or a valid certificate of veterinary inspection that has the vaccination listed and is signed by the Category 2 accredited veterinarian.
- Acceptable proof of rabies vaccination must include the name of the product used, the date of administration, and the duration of immunity if longer than one year (sheep only).
- If the statement of rabies vaccination is included on an EIA test record, it must be signed separately in addition to the required EIA test record signature.
- NOTE: Rabies titers are not acceptable proof of rabies protection and cannot be used to meet entry requirements.
- Acceptable proof of vaccination for dogs is a valid vaccination certificate or a copy of the dog license that contains the rabies vaccination information.

BVD-PI Testing

- All cattle, llamas, and alpacas exhibited at NY county fairs, or the State Fair must be negative to an approved test appropriate to detect **Bovine Viral Diarrhea persistent infection (BVD-PI)**. The testing veterinarian is responsible to make sure the proper test is conducted. This is a once in a lifetime test that must be reported on the required certificate of veterinary inspection. The issuing veterinarian is responsible for verifying the validity of the test, official identification of the animal, and recording the test date on the CVI. If a previous test is not verifiable, the test must be repeated.

Cleaning and Disinfection

- All buildings on the fairgrounds housing animals must be cleaned and disinfected prior to the opening of the fair and between groups of animals when housing is rotated (Section 50.2 of Agriculture and Market regulations).

Animal Deaths

- Occasionally animal deaths occur at a fair. If a death occurs it must be reported to the state veterinarian in charge as soon as possible for review. The animal must be promptly removed from the public exhibit area to a secure location and held for the veterinarian prior to disposal.

Calving, Kidding, and Lambing

- Any cattle, goats, or sheep that calve, kid, or lamb while at a county fair or the State Fair will be **ordered removed from the fairgrounds** along with their offspring, unless the animals are part of a birthing demonstration.

Commingling of Sheep and Cattle

- Due to the potential spread of malignant catarrhal fever from sheep to cattle, it is strongly recommended that cattle be kept separate from sheep.

Commingling of Swine and Poultry

- Due to the potential spread of influenza virus, it is recommended that swine and poultry be housed in separate locations.

Isolation on Returning Home

- The owner or custodian shall keep show animals biologically separate from the herd or flock for a period of at least two weeks after returning to the premises of origin. If any illness is noted in the exhibition animals, the owner should contact their veterinarian immediately.

Individual Species Requirements

Horses

- Certificate of Veterinary Inspection (CVI) is not required for New York origin horses. CVI is required for imported horses. Extended Equine CVIs (EECVIs) are acceptable. For more information on EECVIs, visit <http://www.globalvetlink.com>.
- Negative Equine Infectious Anemia (EIA) test is required for all horses 6 months of age or older. The horse must be accompanied by a valid negative EIA test record, signed by a Category 2 accredited veterinarian. The sample collection date for the qualifying EIA test must have been on or after January 1, 2022, for New York origin horses. For imported horses, the EIA test must have been conducted within 12 months prior to entry. The EIA test certificate must include a complete description of the horse.
- Rabies vaccination within 12 months is required for all horses 4 months of age or older (see above).

Cattle

- Certificate of Veterinary Inspection with animals properly identified. See Animal Identification section above.
- Rabies vaccination is required for all cattle 4 months of age or older (see above).
- All cattle must be negative to an approved test appropriate to detect Bovine Viral Diarrhea persistent infection (BVD-PI). The date and results of the testing must be noted on the certificate of veterinary inspection.
- All cattle must be vaccinated against bovine respiratory disease complex including bovine respiratory syncytial virus, bovine virus diarrhea, infectious bovine rhinotracheitis and parainfluenza with a product administered in a manner and time frame adequate to confer protective immunity for these diseases for the duration of the fair. The date and vaccine product should be documented.

Sheep

- Certificate of Veterinary Inspection with animals individually identified with USDA approved scrapie identification. Identification must be one of the following: 1) USDA approved tags or 2) a legible USDA approved flock tattoo and individual animal ID number or 3) electronic implant device (microchip) if the sheep is enrolled in the Scrapie Flock Certification Program. For information on scrapie ID, contact USDA at 1-866-USDA-TAG (1-866-873-2824).
- Rabies vaccination is required for all sheep 4 months of age or older (see above).
- The CVI must contain a written statement from the issuing Category 2 accredited veterinarian that the flock of origin was inspected after May 1 of the current year and no evidence of contagious, infectious, or communicable diseases was found.
- If evidence of soremouth (contagious ecthyma) is found on any sheep, the entire exhibit including the affected animals (and any small ruminants from any other flock on the same conveyance to the fairgrounds) shall immediately be removed from the fair premises with the holding pens cleaned and disinfected immediately after removal.

Goats

- Certificate of Veterinary Inspection with animals individually identified with USDA approved scrapie identification. Identification must be one of the following: 1) USDA approved tags or 2) a legible registration tattoo or 3) a legible USDA approved herd tattoo and individual animal ID number or 4) electronic implant device (microchip) if the goat is enrolled in the Scrapie Flock Certification Program and/or the electronic implant ID is recorded on the goat's registration paper. For information on scrapie ID, contact USDA at 1-866-USDA-TAG (1-866-873-2824).
- The CVI must contain a written statement from the issuing Category 2 accredited veterinarian that the herd of origin was inspected after May 1 of the current year and no evidence of contagious, infectious, or communicable diseases was found.
- If evidence of soremouth (contagious ecthyma) is found on any goat, the entire exhibit including the affected animals (and any small ruminants from any other flock on the same conveyance to the fairgrounds) shall immediately be removed from the fair premises with the holding pens cleaned and disinfected immediately after removal.

Swine

- Certificate of Veterinary Inspection with animals properly identified. See Animal Identification section above.

Llamas and Alpacas

- Certificate of Veterinary Inspection with animals properly identified. See Animal Identification section above.
- All llamas and alpacas must be negative to an approved test appropriate to detect Bovine Viral Diarrhea persistent infection (BVD-PI). The date and results of the testing must be noted on the certificate of veterinary inspection.

Poultry

- Poultry (with the exception of doves, pigeons, and waterfowl) must be accompanied by 1) results of a negative pullorum typhoid test conducted within 90 days prior to exhibition OR 2) proof that the birds originated directly from a US pullorum-typhoid clean flock or equivalent flock.
- Poultry qualified by 90-day test must be identified by official leg band.
- Proof of NPIP status must be in the form of an NPIP certificate or purchase receipt containing NPIP certification information. If utilizing a receipt, it must be dated within 1 year of the date of admission to the fair.

Deer/Elk (Cervidae)

- Certificate of Veterinary Inspection with animals properly identified. See Animal Identification section above.
- Originate from a herd classified as accredited or qualified under USDA tuberculosis regulations.
- A movement permit obtained from the Division of Animal Industry is required for all deer movements. All CWD and TB program requirements must be met before a permit will be issued. Questions regarding movement permits should be directed to the Division of Animal Industry at 518-457-3502.

Miscellaneous Ruminants

- Certificate of Veterinary Inspection with animals properly identified. See Animal Identification section above.

Exhibitor Pre-fair Guidelines**Cattle, Sheep, Goats, Swine, Llamas, and Alpacas, Cervids, Misc. Ruminants**

- Review the animal health requirements booklet including information for your species **before** your veterinarian arrives to inspect your animals. If you have any questions, **ask**.
- Your veterinarian is responsible for inspecting your animals and completing the certificate of veterinary inspection (CVI). Call **early** to avoid the last-minute rush when mistakes are made and there is no time to correct.
- Make sure **USDA approved official ear tags** are present on cattle and swine and USDA approved scrapie ID is in place on sheep and goats. Official ID must be applied to animals prior to regulatory testing and completion of the CVI.
- Llamas and alpacas require a microchip or ear tag. If a microchip is utilized make sure the veterinarian confirms the microchip ID or places one. If your

- animal is identified by a microchip, make sure you bring a working reader with you to the fair.
- **ALL IDENTIFICATION MUST BE RECORDED. Make sure it is.**
 - Review the CVI carefully upon receipt to make sure all the information is correct including any required test or vaccination information.
 - **DO NOT** stuff it in an envelope and assume all is well. The time to correct is before pulling them out at the fair. The CVI is your document, and you share responsibility if it is incorrect.
 - If you are **importing** livestock from out of state, make sure the interstate requirements are met and you have a valid **interstate certificate of veterinary inspection**.

Poultry

- Schedule pullorum flock inspection and testing well ahead of the fair if your flock is participating in the NPIP program.
- If you're having your birds tested within 90 days of the fair, you must go to a pullorum clinic. Available clinics are listed on the Dept. website. No individual testing is available if you miss a clinic.
- Birds qualified by 90-day test must be identified by official leg band.
- **Bring documentation** with you to the fair in the form of a 1) current NPIP certificate, 2) 90-day test chart or 3) purchase receipt with NPIP certification within 1 year of the date of admission to the fair.

Horses

- NY origin horses must be accompanied by a negative EIA test report. The date of sample collection for the qualifying EIA test must have been on or after January 1, 2022.
- **Imported** horses must be accompanied by an interstate certificate of veterinary inspection with a **negative EIA test within 12 months prior to entry**. Rabies vaccination information can be incorporated into the CVI.
- Drawing or photograph **must** match the horse.
- Rabies vaccination must be within 1 year of arrival at the fair and be documented by a **signed** rabies certificate or a signed statement on the EIA test chart with the required information (see requirements).

MOST IMPORTANT

When you are loading your livestock for the trip to the fair, take the time to examine them. Make sure they are the same animals that are on the paperwork and official ID is present and legible. If they are showing any signs of illness, **LEAVE THEM HOME.**

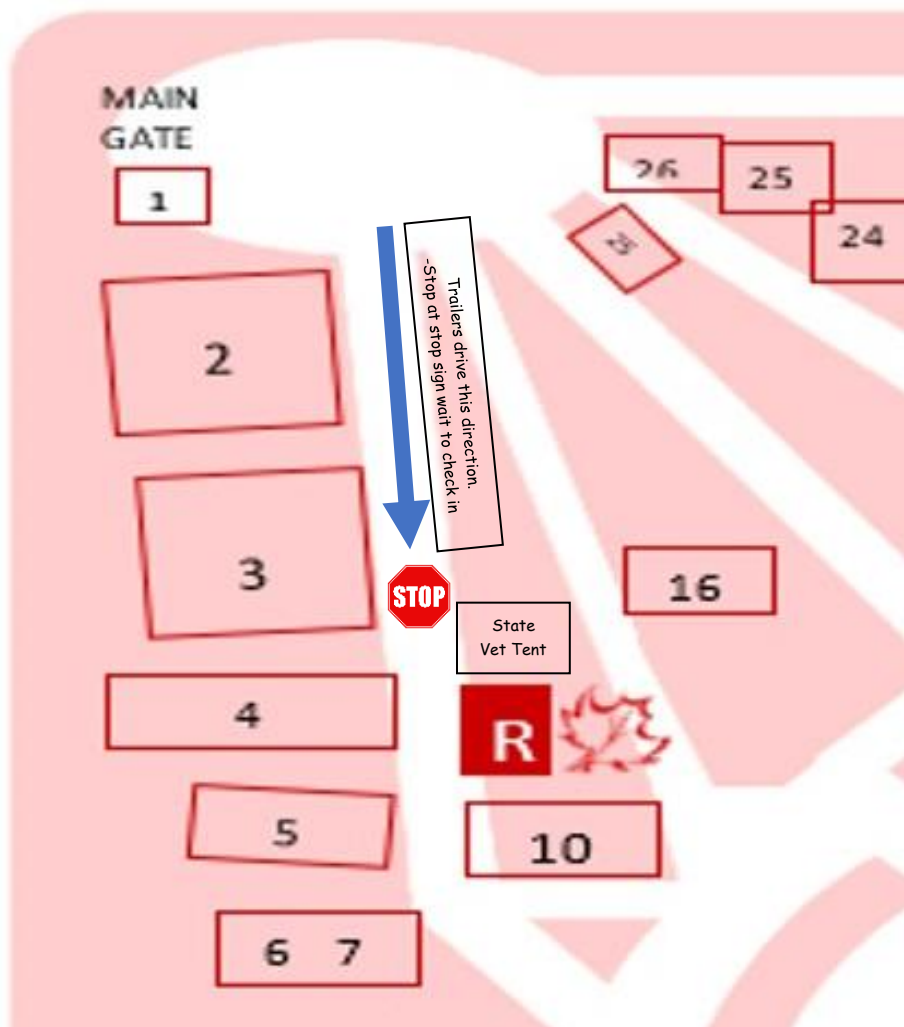
2023 Fair Changes and Reminders

Stall Decorating Contest Theme: Farming is Music to our Ears.

- **State Vet** will be on the grounds:
 - Sunday 8:30am-10:30 (GOATS ONLY), 10:30-1:30 (All Other Species)
 - Monday 9am-6:00pm
 - All livestock **MUST ARRIVE** on the fairgrounds during these hours. Animals arriving outside of these hours will be **IMMEDIATELY SENT HOME**. No animals are to be unloaded until checked by the State Vet. These requirements will be strictly enforced.
- **Cattle Gate** will be an exit only for animal check in days.
- **Animal Trailers** will use the front gate and go down Cattle Drive (by Martin Hall) and get inline for the State Vet to check in your animals (please see attached map).
 - The trailer driver must have all the correct paperwork for the animals to be unloaded.
 - Reminder to make sure your animal registration numbers match their paperwork.
 - Once animals are checked in, trailers will have 20 minutes to unload.
 - Once unloaded the trailers will exit the cattle gates.
 - If your trailer is staying the week of fair, you will exit the cattle gate and come back in and park your trailer in the parking lot.
- If you bringing, just tack in you will directed to park in the infield and there will be a shuttle for your tack to the barns.
- **Stall Decorating Contest:** new this year will be a stall decorating contest. This years theme will be Farming is Music to our Ears.
- **Barn Passes** will require license plate numbers on them, and each car will need their own barn pass. Please bring plate numbers with you when you enter your animals.
- **Entry Office-** Monday- 11-5, Wednesday 12-6, Saturday 10-4, Saturday July 15
Close of entries 10-7
- **Camper Check In-** Saturday 3pm-8pm or Sunday 12 pm - 8 pm
- **Horse Shows-** when horse show is completed all trailers must go around track and out the parking lot. They **CANNOT** drive on exhibit area!
- **Backflow Preventers-** all hoses connection must have backflow preventers on them.
- **Any gated connector or Y connector added must have a backflow preventer before and after the connection.**
 - If you do not have a backflow preventer, please go to the Fair office and sign one out.
- **Wheelbarrows, Buckets, ETC cannot be left with manure in them.**

- If you have any question about Heath Department Requirements, please reach out to the fair office.

Tuesday	Wednesday	Thursday	Friday	Saturday	Sunday
10am - 4H Dairy Show	8am- Open/4H Rabbit Show 9am- 4H Gymkhana 10am- 4H Open Chicken Show 10:30am- Draft Horse Show 1pm- 4H Sheep Show	9am- Open/4H Swine Show 9am- 4H Goat Show 9am- 4H Western/English 1:30pm- 4H Beef Show	9am- Open Dairy Show 9am- Open Hunt seat 1pm- Open Western 4pm- Open Beef Show 4pm- Open Sheep Show	9am- Open Gymkhana 12pm- Parade of Champions 3pm- Livestock Auction	11am- 4H Supreme Master Showman



Otsego County 4-H Animal Science Fair Classes

Classes

Section 001	Beef
Section 002	Dairy
Section 003	Dog
Section 004	Dairy & Meat Goat
Section 005	Horse
Section 006	Poultry/Fowl
Section 007	Ducks/Geese
Section 008	Turkeys/Peacocks
Section 009	Eggs
Section 010	Rabbits
Section 012	Sheep
Section 013	Swine

BEEF - SECTION 001

4-H Beef Judging – Thursday, 8/3/23 - 1:30 p.m.

4-H Superintendent: Melissa Fetterman

Judge-John Kriese

HEALTH DEPARTMENT REQUIREMENTS

1. NO WATER HOSES TO TOUCH THE GROUND, INCLUDES BARN AND WASH RACK
2. Backflow devices MUST be used on all hoses
 - a. Any gated connector or Y connector must have a backflow preventer before and after the connection.
 - b. If you do not have a backflow preventer please go to the Fair office and sign one out.
3. Wheel barrows, buckets, any open containers cannot be left with manure where it can collect rainwater.
4. If you have any question about Health Department Requirements please reach out to the fair office.

Rules

1. All cattle must be identified by USDA approved official ear tag.
2. All cattle must be tested for BVD/PI. See animal health requirements, for additional information.
3. The range of weights for each steer group will be determined by a sort of the weights of the entered animals. Based on this sort, entries will be divided into equal weight groups (light, intermediate, medium, light heavy and heavy).
4. The minimum weight of the lightest group will be 800 lbs.
5. Only two animals per class, (unless group classes) per exhibitor.
6. No bulls born before January 1 of the current year.
7. Group class animal entries, may be owned by the same farm/family.
8. All beef animals coming to County Fair must be entered and shown in their respective class(es).
9. All beef animals must have a halter tie and a neck tie. Grand Champion and Reserve Champion Steer will be named.
10. Grand Champion and Reserve Champion Steer will be named.
11. A Supreme Champion (Best of Show) will be selected from all Grand Champion animals.
12. Exhibitors are responsible for bringing their steers to weigh-in times!
13. Cloverbuds only permitted to show in Cloverbud Showmanship

Showmanship Classes - MANDATORY

Past Master Showmanship winners are exempt.

4-H'ers must enter this class and list their ages as of January 1 of the current calendar year. The Superintendent reserves the right to adjust the class size as necessary. An Intermediate Showman will be chosen from the class winners age 13 and under. The Intermediate Master Showman winner will compete for the Master Showman. First and second place winners older than age 13 will return to the ring to compete for Master and Reserve Master Champion Showman.

Class No.

- | | |
|-----|---|
| 249 | Cloverbud Showmanship – 5 through 8-year-old members with one-on-one supervision by an adult or experienced older teen who maintains ultimate control of the animal |
| 250 | Novice Fitting and Showmanship - any member showing beef for the first time at the Otsego County Fair |
| 251 | Junior Fitting and Showmanship – ages at least 9 and less than 14 years as of January 1 st of current year. |
| 252 | Senior Fitting and Showmanship – ages must be at least 14 y ears old as of January 1 st of current year. |

Herdsmanship Classes – MANDATORY

4-H animal exhibitors are encouraged to maintain clean, attractive, educational displays. Using the Danish System, all animal exhibits will be evaluated daily on cleanliness and neatness of the area, availability of food and water to the animal, and the 4-H exhibitor's appearance and availability to the public. Decorations and ornaments will not be evaluated as part of these classes.

Class No.

- 005 Cloverbud 5 through 8-year-old members Receives a ribbon.
- 007 Junior-ages at least 9 and less than 14 years as of January 1st of the current year.
- 008 Senior- ages must be at least 14 years old as of January 1st of the current year.

- 300 Cow Class – Cow can be any age, does NOT have calf at side, cow may be open or bred, may be divided by age of cow.* not eligible for NYS Fair
- 301 Cow-Calf Class - Cow can be any age. Birth date of calf must be January 1 of current year or younger. Calf must be cow's natural calf, not an embryo transplant. Application for registration/ entry to calf must be on file with respective breed association before show day. Owner of cow must be recorded owner of calf. If there are large classes, cow/calf entries will be divided according to age of cows. Calf may be shown in individual classes.
- 302 Pair of calves, born in current year, can be any combination from the same farm/family
- 303 Pair of yearlings, born in previous year, can be any combination of heifer or steer from the same farm/family
- 304 Get of Sire - shall consist of three animals which are the offspring of the same bull. This can be any combination of cows, calves, heifers, steers, and bull. No more than one of the animals may be a bull, which must have been born on or after January 1 of the current year.

- 305 Produce of Dam-produce shall consist of two animals of any age or sex which are the offspring of that one cow. Either 2 heifers, or 1 heifer and 1 bull (bull must be born on or after January 1 of the current year.
- 306 Best breeding animal owned & bred by exhibitor
- 307 Feeder Steer
 - 1. The range of weights for each steer group will be determined by a sort of the weights of the entered animals. Based on this sort, entries will be divided into equal weight groups (light, intermediate, medium, light heavy and heavy, etc.).
 - 2. The minimum weight of the lightest group will be 800 lbs.
 - 3. Only 2 animals per class, per exhibitor, will be allowed after final wt./class breaks are made.
- 309 Market Steer
- 310 Best market animal owned & bred by exhibitor
- 311 Costume Class

****Dairy Market Animals****

This is for feeder or market animal with 100% dairy breeding, steers or heifers

- 312. Steer or heifer, under 750 lbs.
- 313. Steer or heifer 750-900 lbs.
- 314. Steer or heifer over 900 lbs

HE = Hereford
OT = Other

AN = Angus
*C/U = Crosses or Not registered

WP = White Park
SI = Simmental

Classes	HE	AN	WP	OT	C/U	SI
Bull Calf born between January 1 & March 31 of current year	253	260	267	274	281	288
Bull Calf born after April 1 of current year	254	261	268	275	282	289
Junior Heifer Calves born after Jan. 1 of current year	255	262	269	276	283	290
Senior Heifer Calves born between Sept. 1 & Dec. 31 of the preceding year (9-12 mos.)	256	263	270	277	284	291
Summer Yearling Heifers born between May 1 & Aug. 31 of the preceding year (13-16 mos.)	257	264	271	278	285	292
Junior Yearling Heifers born between Jan. 1 & Apr. 30 of the preceding year (17-20 mos.)	258	265	272	279	286	293
Senior Yearling Heifers born between Sept. 1 & Dec. 31 of the second preceding year (21-24 mos.)	259	266	273	280	287	294

DAIRY CATTLE - SECTION 002

4-H Superintendents:

Amy Proskine & Susan Menendez

Tuesday, August 1, 2023 10 a.m. - 4-H Dairy Show

Judge Cassie Menendez

All 4-H dairy cattle must be in place by 7 p.m. Monday and remain until 6:30 p.m. Sunday. Use entry forms provided in the fair book.

HEALTH DEPARTMENT REQUIREMENTS

1. NO WATER HOSES TO TOUCH THE GROUND, INCLUDES BARN AND WASH RACK

2. Backflow devices MUST be used on all hoses

a. Any gated connector or Y connector must have a backflow preventer before and after the connection.

b. If you do not have a backflow preventer, please go to the Fair office and sign one out.

3. Wheel barrows, buckets, any open containers cannot be left with manure where it can collect rainwater.

4. If you have any question about Health Department Requirements please reach out to the fair office.

Cattle Regulations

1. All cattle must be identified by USDA approved official ear tag, RFID or 840 tags (tags available at the 4-H Office, if needed)
2. Dairy cattle must be personally owned and registered individually, as well as cared for by the exhibitor, since June 1 of the current year. Dual ownership, family ownership or syndicates are not allowed. All animals must be at least 87% purebred or breed standard for national show. Exhibitors who have filed a Non-Ownership Certificate with the 4-H office prior to June 1 of the current year are eligible to show.

Dual ownership between siblings will be allowed when the 4-H and Dairy Youth Show Eligibility for Otsego County 4-H & NY State Fair Dairy Youth Show criteria are met. Complete rules available at the 4-H Office.

3. All papers must be available for inspection.
4. There will be no pending registration papers or transfers allowed.
5. Cattle registration papers will be checked by a member of the Dairy Issue Committee at the fair. Animals not having the required

registration papers will be disqualified. All transfers must conform to the respected breed association transfer policy as outlined by the breed association.

6. It is the exhibitor's responsibility to be able to locate and present the identification and registration.
7. Exhibitors are limited to not more than two entries in each class.
8. ALL cattle must be tested for BVD/PI. See animal health regulations for additional information.
9. All hay and bedding must be furnished by the exhibitor. Limited storage of small baled hay, shavings and straw will be allowed in the barns. All excess hay, shavings or straw storage as well as ALL large bales will be stored outside of the barn. The dairy cattle superintendent reserves the right to determine the appropriate amount of hay, shavings and or straw storage in the barn.
10. All animals must be housed in places assigned by the dairy cattle superintendent.
11. Judging and awards will be on the Danish system.
12. Your entire exhibit must stay in place until 6:30 p.m. on Sunday including all decorations and identification cards.
13. Exhibitors must show their own cattle:
 - a. Exhibitors clothing should be neat and clean and appropriate for the task at hand. Whites are required. Farm names and letters shall not appear on clothing.
 - b. If an exhibitor has two entries in a class, the second entry must be shown by another youth who is also exhibiting in the show.
 - c. In emergency situations, exceptions can be made, but arrangements must be cleared with the 4-H Dairy Issue Committee.
 - d. Exhibitors are encouraged to prepare their own cattle for show and should maintain the youth exhibit area. Adults should not be seen doing this work.
 - e. No coaching of exhibitors will be allowed from outside of the show ring.
 - f. Code of ethics of PDCA will be enforced.
14. Classes will be added for other recognized dairy breeds, if necessary.
15. Non-ownership is NOT AVAILABLE to youth already owning an animal of that species.
16. Youth that do not own a dairy animal may lease two dairy animals.

All animals must meet the NYS PDCA registry requirements. All animals MUST be individually owned or leased on or before June 1 by the 4-H member showing the animal.

Showmanship Classes - MANDATORY

Past Master Showmanship winners are exempt.

4-H'ers must enter this class and list their ages as of January 1 of the current calendar year. The Superintendent reserves the right to adjust the class size as necessary. An Intermediate Showman will be chosen from the class winners age 13 and under. The Intermediate Master Showman winner will compete for the Master Showman. First and second place winners older than age 13 will return to the ring to compete for Master and Reserve Master Champion Showman.

Class No.

- 1 Cloverbud 5 through 8-year-old members with one-on-one supervision by an adult or experienced older teen who maintains ultimate control of the animal. Receives a ribbon.
- 2 Novice (any age youth having never shown before)
- 3 Junior-ages at least 9 and less than 14 years as of January 1st of the current year.
- 4 Senior- ages must be at least 14 years old as of January 1st of the current year.

Herdsmanship Classes – MANDATORY

To encourage 4-H animal exhibitors to maintain clean, attractive, educational displays. Using the Danish System, all animal exhibits will be evaluated daily on cleanliness and neatness of the area, availability of food and water to the animal, and the 4-H exhibitor's appearance and availability to the public. Decorations and ornaments will not be evaluated as part of these classes.

Class No.

- 5 Cloverbud 5 through 8-year-old members Receives a ribbon.
- 6 Junior-ages at least 9 and less than 14 years as of January 1st of the current year.
- 7 Senior- ages must be at least 14 years old as of January 1st of the current year.

BREED CLASSES

AY = Ayrshire
HO = Holstein

BS = Brown Swiss
JE = Jersey

GU = Guernsey
MS = Milking Short Horn

CLASSES	AY	BS	GU	HO	JE	MS
Spring Heifer Calf-born on or after March 1 of current year *	9	10	11	12	13	14
Winter Heifer Calf-born December 1 of previous year – February 28 current year	15	16	17	18	19	20
Fall Heifer Calf - born September 1 to November 30 of the previous calendar year	21	22	23	24	25	26
Summer Yearling born – born June 1 to August 31 of the previous calendar year	27	28	29	30	31	32
Spring Yearling (not in milk) – born March 1 – May 31 of the previous calendar year	33	34	35	36	37	38
Winter Yearling (not in milk) - born December 1; two calendar years ago to February 28 of the previous calendar year	39	40	41	42	43	44
Fall Yearling (not in milk) - born September 1 to November 30; two calendar years ago	45	46	47	48	49	50
Junior - 2 years - born March 1 to August 31; two calendar years ago	51	52	53	54	55	56
Senior - 2 years - born September 1; three calendar years ago to February 28; two calendar years ago	57	58	59	60	61	62
Milk Cow - 3 years—born between Sept 1 - August 31	63	64	65	66	67	68
Milk Cow - 4 years—born between Sept 1 - August 31	69	70	71	72	73	74
Milk Cow - 5 years—born between Sept 1 - August 31	75	76	77	78	79	80
Aged Cow over 5 years	81	82	83	84	85	86
Dry Cow, any age—to have calved at least once and not shown in any other single class. Must be non-lactating during fair.	87	88	89	90	91	92
Dam and Daughter	93	94	95	96	97	98
Produce of Dam, 2 animals any age, produce of one cow	99	100	101	102	103	104
Best Bred & Owned Junior Animal ** Papers will be checked at ringside.	105	106	107	108	109	110
Best Bred & Owned Senior Animal ** Papers will be checked at ringside.	111	112	113	114	115	116

***Must be born by April 15.**

****There will only be a lead out for this class if a champion animal is not bred and owned by the exhibit**

Championship Awards –

Ribbons for the Junior and Senior Champion and Reserve Junior and Senior Champion and Grand Champion of each breed will be presented. All 1st and 2nd place animals with blue ribbons may compete for these ribbons. The Grand Champion Female of each breed will compete for Supreme Champion Female of all Breeds.

Class No.

205 Junior Best Three females – All three animals must be bred by an individual 4-H member.

206 Senior Best Three Females – All three animals must be bred by an individual 4-H member.

Class No.

209 *Junior 4-H Club Herd -- three animals owned by three different exhibitors. Will be shown at the end of Junior Champion Class.

211 *Senior 4-H Club Herd -- three animals (at least one animal must be over 2-years old) owned by three different exhibitors. Will be shown after the Grand Champion Class.

Classes 209 & 211

Clubs are limited to one entry per class

Dairy Contests

Dairy Challenge-6pm, Martin Hall

Dairy Challenge is a hands-on educational activity for 4-H Youth to test their understanding of the dairy industry, knowledge of how to properly manage a dairy farm, and evaluate top quality dairy animals.

Class No.

212 Cloverbud-ages 5-8, ribbon only

213 Beginner-ages 8-10 years as of January 1st of the current year.

214 Junior-ages at least 9 and less than 14 years as of January 1st of the current year.

215 Senior- ages must be at least 14 years old as of January 1st of the current year.

Dairy Judging-1pm, Livestock Show Ring

Dairy Judging contests teach youth to critically evaluate dairy animals based on breed standards and gain an understanding of how form affects function.

Class No.

216 Cloverbud-ages 5-8, ribbon only

217 Beginner-ages 8-10 years as of January 1st of the current year.

218 Junior-ages at least 9 and less than 14 years as of January 1st of the current year.

219 Senior (Reasons)- ages must be at least 14 years old as of January 1st of the current year.

DOG CARE & TRAINING - SECTION 003

Superintendent: Sonja Galley

4-H Dog Show

Saturday, July 22, 10 a.m.

Agility, Obedience, Rally, Grooming & Handling

Location: 4276 State Highway 51, Garrattsville

Entries due **July 15** to the 4-H Office

Judges-Stephanie Crawford- Showmanship, Obedience and Rally

Jodi Lepik-Agility

Guidelines for dog show participation:

- All exhibitors need to have proof of rabies available for show while at all 4-H events, any location.
- Proof of Training for each class/sport entered is **REQUIRED**, including Grooming and Handling. Minimum of classes needed per sport is eight classes. Training must include group training for good social skills around other people and dogs.
- Trainers/Instructors certifying dogs in training must be experienced in dog training and may be family members. Committee approval is needed to be considered a certifying instructor.
- Dogs must be qualified for agility- they must show proof that they are trained and confident on equipment required for their competition level.
- Training must have taken place within the current 4H year.
- Dog Science committees and/or judges, other 4H agents or agents for the event reserve the right to ask the dog/handler to be removed if they believe the dog/team is unsafe. They also reserve the right to restrict activities of dog/handler team to a safer level.
- No bitches in season are allowed at events.
- Dogs competing in agility must be a minimum of 15 months. They will need either an official measuring at the event, or a permanent height card from an established agility venue- AKC, or CPE etc.
- Dogs competing in all other sports are required to be 6 months of age.
- Leashes for on lead exercises are to be 6 feet in length.
- No dogs may be shown on prong collars, head halters, or harnesses.
- Agility dogs must be shown either with no collar or a buckle collar. No slip collars.
- All dogs competing should wear properly fitted collars so as not to slip loose.
- You may not leave your dog unattended.
- Dogs will be judged on a point basis for state fair eligibility.
- NO** treats or other training aids in the show ring unless specifically stated they are allowed in the class description. Classes that allow treats/toys: Grooming and Handling (all levels), Intro to Rally, Intro to Obedience, Intro to Agility
- Participants must clean up after their dogs.
- Dogs are not allowed on the fairgrounds other than necessary transit to and from the event being held.
- All exhibitors must be accompanied by responsible adult.
- Dogs that received a Red or White placing ribbon rating may compete at the same level class the second year.
- Dogs receiving a Blue placing must move up to the next level [unless otherwise noted].
- No double handling from outside the ring- please do not try to help your child from ringside, it is distracting and will only serve to draw the dogs attention off his handler.
- Dogs earning a blue ribbon in a class at the county show are eligible to compete at the state show in the corresponding class. If a circumstance arises where the dog/handler is unable to attend the county show, a request to use a comparable venue must be made in writing to the superintendent (i.e., injury, illness, bitches in heat) by the day of the county show. Situations will be evaluated by the dog committee and handled on a case by case manner. The decision of the committee is final. Other acceptable venues include but are not limited to AKC, ASCA, USDA, CPE, UKI. A qualifying score would then be needed to be eligible for the state show—documentation must be provided.

Note: No dog can compete in more than one regular obedience class. An individual can compete at only one level with each dog. Dogs handled by more than one handler in the same year or other years must compete at dogs highest level of training, regardless of handlers level.

GROOMING & HANDLING CLASSES - MANDATORY

Guidelines for Grooming and Handling Classes:

- The Appearance of the Animal (Grooming) will account for 45 points and the Showing (Handling) of the Animal will account for 45 points. Knowledge of handler (appropriate to class level) will account for 10 points.
- If a 4-H'er is also entered in one or more obedience classes, he/she should notify one of the stewards in the obedience class(s) that he/she is also entered in Grooming and Handling
- Gaiting Patterns will be I, L, T, Δ.
- Dogs must be shown by the 4-H member who did the grooming. The same dog may NOT be shown twice.
- Treats will be allowed in all Grooming & Handling classes

2010 **Grooming and Handling A** – For 4-H'ers that have never competed in a grooming and handling class at the County Fair.

2011 **Grooming and Handling B/ Jr. Class** (ages 9-13) – For 4-H'ers that have previously competed in a grooming and handling class at the County Fair.

2012 **Grooming and Handling B/ Sr. Class** (ages 14-19) – For 4-H'ers that have previously competed in a grooming and handling class at the County Fair.

2013 **Grooming and Handling C**— For 4-H'ers who have been named Champion Showman in previous years.

RALLY OBEDIENCE CLASSES

Guidelines:

1. In general, American Kennel Club (AKC) rules will be used for Rally Obedience Class evaluation. Mixed parentage dogs are welcome.
2. The Obedience Regulations & Rules applying to dog shows, where applicable, shall apply to all persons and dogs, except as otherwise provided.
3. A copy of the course will be posted at the announcer's stand and a copy will be provided to each competitor.
4. Competitors shall be provided with a 15 minute period to walk the course (without dogs) and ask the judge questions.
5. There will be a maximum time of three minutes per handler/dog team.
6. Dogs may be shown in only one level of Rally Obedience.
7. Times will be used only to break a tie for Grand or Reserve.
8. Class selection is based on a dog's level of training not handlers training history.

2014 **Intro to Rally**— Course shall consist of a maximum of 10 stations, plus START & FINISH signs. This course is open to all dogs at all levels of obedience. Intro to Rally will be performed on leash. Dogs receiving white or red ribbon will be able to repeat Intro to Rally the following year, those receiving a blue ribbon must move to Rally-Novice A the following year. Dogs who have received a Rally Novice Title (unless earned within 60 days of the show) must move to Rally Advanced. Treats/toys may be used in this class. **NOT ELIGIBLE FOR STATE DOG SHOW**

2015 **Rally-Novice A** – Course shall consist of 10-15 stations plus a START & FINISH sign. This course is open to dogs at all levels of Obedience. Rally Novice will be performed on leash. Dogs receiving a white or red ribbon will be able to repeat Novice A the following year. Dogs receiving Blue Ribbons must move to the Novice B class if not ready to move up to Rally Advanced. Dogs who have received a Rally Novice (RN) Title unless earned within 60 days of the show must move to Rally Advanced.

2016 **Rally-Novice B** – For dogs who are not yet ready for Rally Intermediate but who received a blue ribbon in the previous year. Class description is the same as Rally Novice A. Dogs receiving a white or red ribbon in Novice B will be able to repeat the Novice B class the following year. Dogs receiving a blue ribbon in Novice B must move to Rally Intermediate the following year. Dogs who have received a Rally Novice (RN) Title unless earned within 60 days of the show must move to Rally Intermediate.

2017 **Rally-Intermediate**-To be eligible for entry in this class dogs must have received a blue in Rally Novice B but may not have earned a blue in Rally Advanced. All signs are judged with the dog on leash. Rally Intermediate must have 12 to 17 signs (Start and Finished not included) with a minimum of three Advanced level signs. There are no jumps in this class. Dogs earning a red or white ribbon in Rally Intermediate will be able to repeat this Intermediate class the following year. Dogs receiving a blue in Intermediate must move to Rally Advanced the following year. Dogs who have received a Rally Intermediate (RI) title must move to Rally Advanced (unless) earned within 60 days of the show).

2018 **Rally-Advanced** – Course shall consist of 12 – 17 exercise stations plus a START & FINISH sign. Rally Advanced course shall be performed with the **dog off leash**. All dogs must be working at the Graduate Beginner level to be training/working/showing in this class. Dogs not entered in an obedience class may be asked to perform an off-leash exercise to show that they belong in Rally Advanced. Beginner A & B obedience dogs are not eligible. Dogs who have received a Blue Ribbon or a Rally Advanced (RA) Title (or the equivalent), unless earned within 60 days of the show must move to Rally Excellent.

2019 **Rally-Excellent** – Course shall consist of 15-20 stations plus a START & FINISH sign with no more than seven stationary exercises. All dogs must be working at the Graduate Beginner level to be training/working/showing in this class. Dogs not entered in an obedience class may be asked to perform an off-leash exercise to show that they belong in Rally Excellent. Beginner A & B obedience dogs are not eligible. All exercises shall be performed off leash except the Honor Exercise. Dogs who have received a Blue Ribbon or Rally Excellent (RE) Title (or the equivalent) unless earned within 60 days of the show may participate FEO with permission from the 4-H Dog Show Superintendent.

Other Classes

2020 **Service Dog** – Only those dogs that are currently being raised by 4-H members for an organization that provides dogs to aid the handicapped (e.g. Guiding Eyes for the Blind). Dogs will be evaluated on their appearance (grooming) and simple obedience appropriate to their age and service. Dogs are allowed to wear identification (blanket or collar) appropriate to their sponsoring organization.

2021 **Costume class** (no premium) – Open to any 4-H handler/dog combination.

2022 **Cloverbud** – Obedience requirements; Heel on Leash, Sit, Figure 8, Stand for Exam. Grooming and Handling requirements; dog's condition and appearance, handler's appearance/attitude, straight up and down pattern.

2023 **Brace** – For ONE 4-H'er with TWO dogs, at least one of the dogs being owned by the 4-H'er handling the Brace. The two dogs may be different breeds. Exercises will be performed as in Graduate Beginner (Heel on Leash, and Figure 8, Stand for Examination, Recall, Long Sit and Long Down). 4-H'ers and dogs who have participated in this class in previous years may repeat. Beginner A and B Obedience dogs are not eligible for Brace. The same two dogs, as a brace, may not be shown twice.

2024 **Four-Person Team** – Teams will consist of four 4-H'ers with their four dogs simultaneously performing Graduate Beginner exercises Heel on Leash, Figure 8, Stand for Examination, Recall, Long Sit and Long Down). The Figure 8 will require the use of 5 stewards as "posts". Once lined up for the Recall, the judge will instruct the 4-H'ers to leave their dogs (all four handlers leave as a group). Each 4-H'er will call their dog individually. Once all four dogs have been called, the judge will instruct the handlers to finish their dogs (as a group). 4-H'ers and dogs who have participated in this class in previous years may repeat. Only one entry per handler/dog combination. Beginner A & B obedience dogs are not eligible for 4-Person Team.

2025 **Drill Team** (FEO at County level) – Each team will consist of 8 or more dogs and their trainers (4-H'ers) who will perform a detailed drill of their own design. Trainers may wish to dress alike and perform to music. Live music is permitted. Teams using pre-recorded music should bring their own CDs for playing. No adult may enter the ring with the Drill Team. Vocal or whistle commands are permitted, but they must be given by a member of the Drill Team.

Dogs may be dressed to add further color. The drill should be at least five but not exceed eight minutes in length.

AGILITY CLASSES

RULES:

1. Dogs may be asked to perform an off lead recall and sit/stay to show that they belong in Agility. **NOTE: Dogs entered in Beginner A & B obedience are not eligible to compete in agility at state fair. However, they can compete in agility at the county level.**
2. Dogs must be at least 15-months old.
3. Either no collar or flat buckle collars but no hanging tags or attachments.
4. Handlers shall be allowed to bring their dog to the start line on leash.
5. Handlers will be excused by the judge/superintendent for inappropriate actions including training devices.
6. Handlers in all classes will be allowed one ten minute walk through the course, without a dog, prior to the start of the class.
7. A handler may be asked to leave the ring at any time at the judges/superintendents discretion.
8. All dogs must be measured prior to judging.
9. If a dog is trained by someone before the 4-H handler takes over, that dog must be shown at the next highest level of competition.
10. Dogs who have reached age 7 or above will be allowed to jump 4" lower than their required jump height. 4-H member will enter the height division of their dog measured at the withers and will note "veteran" on their entry form. The notation of "veteran" will also be made on your jump card. (Veteran's class does not apply to Pre-Novice).
11. Training Certificates must state equipment trained on.
12. Dogs entering agility must be fully trained and safe on ALL agility obstacles for their level of competition. Safety certificates **required** for dogs not attending agility training with an approved instructor. For safety reasons, Superintendents or judge have the right to change a dog's level or refuse a dog based on the level of training.

Mandatory Elimination: as defined by AKC, will result in a 15-point deduction for each occurrence.

Mandatory Excusals: as defined by AKC, will result in a score of zero. (i.e. a dog that leaves the course area and discontinues working.)

2026 Intro to Agility- Maximum of ten obstacles, course is straight forward using non-winged jumps, pipe tunnel, A-Frame, and table. The following obstacles will not be used: Teeter, weaves, dog walk, broad jump, tire jump, winged jumps. Dogs can be on or off leash, treats/toys can be used. **NOT ELIGIBLE FOR STATE DOG SHOW 2025** **Agility (Pre-Novice On lead)** *This class will only receive a participation award* Obstacle course will be set for a very basic beginner level. **NOT ELIGIBLE FOR STATE FAIR**

2027 **Agility (Pre-Novice Off lead)** – A ten obstacle course that is straight forward using non-winged jumps, pipe tunnel, A-frame, tire jump, table and dog walk. Any dog that received a Blue placing must move to the next level.

2028 **Agility (Novice)** – Any dog that received a Blue placing must move to the next level. Dogs must not have completed their AKC Novice Standard Agility title (or the equivalent – NADAC, USDAA, etc.) unless the title was earned within 60 days of the show. At least 12 – 13 obstacles must be used in the Novice classes: (There will be no weaves in Novice.)

2029 **Agility (Open)** – For dogs who have received a Blue award in the Novice Level. Dogs must not have completed their AKC Open standard title (or the equivalent – NADAC, USDAA, etc.) unless the title was earned within 60 days of the show. Additional obstacles will be added.

2030 **Agility (Excellent)** – For dogs who have received a blue award in the Open Level. Dogs must not have completed their AKC Excellent Title (or the equivalent – NADAC, USDAA, etc.) unless the title was earned within 60 days of the show. Dogs that have titled or received a Blue ribbon in this class may show FEO.

2031 **Cloverbud Agility (On lead)** – Course set at very basic beginner level. Adult assistance will be allowed in show ring. No restrictions apply to training level of dog; handler must have participated in a training class prior to trial.

OBEDIENCE CLASSES

Class No.

2101 Intro to Obedience For dogs who are not ready to enter Beginner level obedience classes. All exercises are performed on leash. Treats/toys can be used. Exercises are Heel on Leash, Figure 8 (using cones instead of people), Sit for exam, Recall, long sit: 30 seconds. **NOT ELIGIBLE FOR STATE DOG SHOW**

2102 Beginner A – For 4-H'ers who have not previously trained a dog. The dogs in this class must not have graduated beyond the Beginner level. All exercises (Heel on Leash and Figure 8; Sit for Examination; Recall; Long Sit, 1 Minute) will be performed with the dog on lead.

Dogs entered in this class cannot also participate in Agility, Brace or 4-Person Team at STATE FAIRπ

2103 Beginner B – For 4-H'ers who have previously trained a dog in Beginner or more advanced levels of obedience. Dogs must not have graduated beyond the Beginner level. Exercises are the same as in Beginner A. Dogs entered in this class cannot also participate in Agility, Brace or 4-Person Team at STATE FAIR

2104 Beginner C – For 4-H'ers who have not previously trained a dog, but a dog who has been trained beyond the beginner level of training. May be combined with Beginner B. Exercises are the same as in Beginner A.

2105 Graduate Beginner A – For 4-H'ers who have not previously trained a dog beyond the Graduate Beginner level. Dogs must not have graduated beyond the Graduate Beginner level. Exercises and maximum possible points are the same as in the Beginner A and B classes EXCEPT that the Stand for Examination, Long Sit, 1 minute; Long Down, 3 minutes; exercises are done with leash attached to collar and placed next to dog with number. The Recall exercise is done with the dog off leash. Dogs receiving a blue ribbon in this class MUST move to Novice.

2106 Graduate Beginner B – For 4H'ers who have previously trained a dog in graduate beginner or more advanced levels of obedience. Dogs must not have graduated beyond the Graduate Beginner level. Exercises and maximum possible points are the same as in Graduate Beginner A. Dogs receiving a blue ribbon in this class MUST move to Novice.

2107 Novice A – For 4H'ers and dogs who have completed a Novice course of instruction but have not graduated beyond this level. Dogs must not have completed their AKC Companion Dog (CD) title (or the equivalent – UKC U-CD, All-American CD, Club CD, CKC CD, etc.) unless the CD was earned within 60 days of the show. Other than the Heel On Leash and Figure 8, all exercises will be performed with the dog off lead (Stand for Examination; Heel Off Leash; Recall). (Long Sit, 1 minute; Long Down, 3 minutes are done with leash attached to collar and placed next to dog with number). Maximum possible score will be 200 points.

2108 Novice B – Exercises will be the same as Novice A. Exhibitors can participate in this class more than once. Open to any handler and dog at the Novice Level but not ready for Advanced Novice.

2109 Advanced Novice – For 4H'ers and dogs who have not graduated beyond the Advanced Novice level of obedience. Dogs may have earned a CD title but not a Companion Dog Excellence (CDX) title (or the equivalent). Other than the Heel On Leash, all exercises will be performed with the dog off leash (Stand for Examination; Heel Free and Figure 8; Drop on Recall; Long Sit, Handlers Out of Sight, 3 minutes; Long Down, Handlers Out of Sight, 5 minutes). Maximum possible score will be 200 points. Open to any handler and dog beyond the Novice Level but not ready for Graduate Novice.

2110 Graduate Novice – Dogs may not have earned a CDX or equivalent title, unless the title was earned within 60 days of the show. The exercises are: Heel Free and Figure 8; Drop on Recall; Dumbbell Recall; Recall over High Jump; Recall over Broad Jump and Long Down. The maximum possible score is 200 points. Open to any handler and dog beyond the Novice level but not ready for open class (due to training and/or physical ability of dog)

2111 Open A – For 4-H'ers and dogs who have not graduated beyond the Open level of obedience. Dogs may have earned a CD degree but not a CDX, unless the CDX was earned within 60 days of the show. ALL exercises will be performed with the dog off leash (Heel Free and Figure 8; Drop on Recall; Retrieve on Flat; Retrieve Over High Jump; Broad Jump; Long Sit, Handlers Out of Sight, 3 minutes; Long Down, Handlers Out of Sight, 5 minutes). Maximum possible score will be 200 points.

DAIRY & MEAT GOAT - SECTION 004

Superintendent: Victor F. C. Jones
Dairy & Meat Goat Show, Thursday, 8/3/23 9 a.m.
Judge-Kate Preston

Meat Goat Show follows the Dairy Goat Show

1. All entries must meet state health guidelines.
2. Pre-entry necessary by July 15, to the 4-H Office, 123 Lake Street, Cooperstown, NY 13326
3. Ownership is required by June 1 of the current year. Exhibitors who have filed a Non-Ownership Certificate with the 4-H office prior to June 1 of the current year are eligible to show.
4. Classes will be divided by breed if enough entries.
5. Entries may be registered or grade.
6. No horned goats in the DAIRY goat division.
7. Disbudding/Dehorning not required for MEAT Goats. Horns 4 inches or more must be tipped for NYS fair.
8. MEAT Goat Identification Requirements:
IF REGISTERED: must have a tattoo that matches their registration papers.
IF NOT REGISTERED: must have a Scrapie tag.
9. Classes **MAY** be limited to TWO entries per class.
10. To compete at State Fair, dairy animals must be purebred or recorded grades and owned individually by the Exhibitor and registered in the exhibitor's name before June 1 of the current year.
11. To compete at State Fair, MEAT goat breeding stock does not need to be registered with any breed organization. Goats must be owned individually by the exhibitor and registered in the exhibitor's name before June 1 of current year. Registered meat goats must be tattooed and accompanied by their registration papers.

HEALTH DEPARTMENT REQUIREMENTS

1. NO WATER HOSES TO TOUCH THE GROUND, INCLUDES BARN AND WASH RACK
2. Backflow devices MUST be used on all hoses
 - a. Any gated connector or Y connector must have a backflow preventer before and after the connection.
 - b. If you do not have a backflow preventer please go to the Fair office and sign one out.
3. Wheel barrows, buckets, any open containers cannot be left with manure where it can collect rainwater.
4. If you have any question about Health Department Requirements please reach out to the fair office.

DAIRY GOATS

Herdsmanship Classes - MANDATORY

To encourage 4-H animal exhibitors to maintain clean, attractive, educational displays. Using the Danish System, all animal exhibits will be evaluated daily on cleanliness and neatness of the area, availability of food and water to the animal, and the 4-H exhibitor's appearance and availability to the public. Decorations and ornaments will not be evaluated as part of these classes.

Class No.

- 005 Cloverbud 5 through 8-year-old members Receives a ribbon.
007 Junior-ages at least 9 and less than 14 years as of January 1st of the current year.
008 Senior- ages must be at least 14 years old as of January 1st of the current year.

Showmanship Classes - MANDATORY

Class No.

- 100 Cloverbud 5 through 8-year-old members with one-on-one supervision by an adult or experienced older teen who maintains ultimate control of the animal. Receives a ribbon.
101 Novice (any age youth having never shown before)
102 Junior-ages at least 9 and less than 14 years as of January 1st of the current year.
103 Senior- ages must be at least 14 years old as of January 1st of the current year

First place winners in classes 2 – 4 will compete for Master Showman and Dairy Goat Showman.

Note: Master Showmen may be exempt from further showmanship in that species at the discretion of the livestock committee/fair superintendent.

Goat Classes	Alpine	Lamancha	Nigerian Dwarf	Nubian	Oberhasli	Saanen & Sable Saanen	Toggenburg	Recorded Grade
Jr. Kid, 0-5 months	205	300	400	500	600	700	800	900
Sr. Kid, 5-9 months	206	301	401	501	601	701	801	901
Yearling, 9 – 24 months	207	302	402	502	602	702	802	902
Junior Champion & Reserve Junior Champion of Each Breed will be selected								
Milker, under 2 years	208	303	403	503	603	703	803	903
Milker, Under 24 months	209	304	404	504	604	704	804	904
Milker, 2 years and under 3	210	305	405	505	605	705	805	905
Milker, 3 years and under 4	211	306	406	506	606	706	806	906
Milker, 4 years and under 5	212	307	407	507	607	707	807	907
Milker, 5 years and over	213	308	408	508	608	708	808	908
Dry Doe* 2 years and over	214	309	409	509	609	709	809	909
Grand Champion & Reserve Grand Champion of Each Breed will be selected Overall Junior Champion & Reserve Junior Champion Overall Champion & Reserve Champion								
Family Owned Daughter & Dam					950			
Family Owned Best 3 Females					951			
Family Owned Get of Sire (3 from same sire)					952			
Family Owned Herd, Goats, 1 kid and at least one in milk					953			
Best Bred and Owned					954			

Meat Goats
Follows the 4-H Dairy Goat Show

Showmanship Classes: MANDATORY

Class No.

- 106 Cloverbud 5 through 8-year-old members with one-on-one supervision by an adult or experienced older teen who maintains ultimate control of the animal. Receives a ribbon.
107 Novice (any age youth having never shown before)
108 Junior-ages at least 9 and less than 14 years as of January 1st of the current year.
109 Senior- ages must be at least 14 years old as of January 1st of the current year.

Herdsmanship Classes - MANDATORY

To encourage 4-H animal exhibitors to maintain clean, attractive, educational displays. Using the Danish System, all animal exhibits will be evaluated daily on cleanliness and neatness of the area, availability of food and water to the animal, and the 4-H exhibitor's appearance and availability to the public. Decorations and ornaments will not be evaluated as part of these classes.

Class No.

- 005 Cloverbud 5 through 8-year-old members Receives a ribbon.
007 Junior-ages at least 9 and less than 14 years as of January 1st of the current year.
008 Senior- ages must be at least 14 years old as of January 1st of the current year.

Conformation Classes - Percentages

- 1000 Doe Kid; 3½ months and under 6 months
1001 Doe Kid; 6 months and under 9 months
1002 Doe Kid; 9 months and under 12 months
Percentage Doe will be selected from the 1st and 2nd place entries in Classes #1000-1002

- 1005 Doe, 1-year old and under 2; never kidded
1006 Doe; 1-year old and under 2; kidded

Yearling Champion and Reserve Yearling Champion Percentage Doe will be selected from the 1st and 2nd place entries in Classes #1005-1006

- 1009 Doe; 2-year old and under 4; kidded
1010 Doe; 4-year old and older; kidded

Grand and Reserve Champion Percentage Doe will be selected from the Champion and Reserve Junior, Yearling and Senior Percentage Does.

Conformation Classes – Full Bloods & Purebreds

- 1115 Doe kids, 3 ½ months and under 6 months
1116 Doe kids, 6 months and under 9 months
1117 Doe kids, 9 months and under 12 months

Junior Champion and Reserve Junior Champion FB/PB Doe will be selected from the 1st and 2nd place entries in Classes #1115-1117

- 1120 Doe, 1-year Old and under 2, never kidded
1121 Doe 1-year Old and under 2, kidded

Yearling Champion and Reserve Yearling Champion FB/PB Doe will be selected from the 1st and 2nd place entries in Classes #1120 – 1121

- 1124 Doe 2-year Old and under 4, kidded

1125 Doe, 4-year Old and older, kidded

Senior Champion and Reserve Senior Champion FB/PB Doe will be selected from the 1st and 2nd place entries in Classes #1124 – 1125

Grand and Reserve Champion FB/PB Doe will be selected from the Champion and Reserve Junior, Yearling and Senior FB/PB Does.

- a. Full bloods and purebreds are does and doe lings registered or eligible for registration as either purebreds or full bloods with a recognized meat goat breed association.
- b. Doe kids and does must be either 1) tattooed and accompanied by matching registration papers indicating their age, or 2) must be judged on age by their teeth (no adult teeth < 1 yr.; 1 set adult teeth = 1 year old and under 2; 2 to 3 sets of adult teeth = 2 yrs. old and under 4; > 3 sets of adult teeth = 4 yrs. and older.
- c. Meat goat breeding stock does not need to be registered with any breed organization.

Market Goat Classes

1130 Meat Goat Lightweight Market Kid
1131 Meat Goat Heavyweight Market Kid

1134 Dam & Daughter
1135 Pygmy Goat

- a. Goats can be either castrated male or female kids (NO ADULT TEETH) that have competed in a meat goat class at a county level or been quality endorsed by a 4-H Cornell Cooperative Extension Youth Educator or other authorized representative of a qualified related youth organization.
- b. Any doe kid showing in this class may not show in Classes #1000-1001 and will be judged as a market animal.
- c. Market kid classes will be assigned based on **weigh-ins (please see Superintendent on date and time)**. No more than a total of three (3) market kids per exhibitor will be allowed. Champion and Reserve Market Kid will be selected from the 1st and 2nd place entries in Classes #1030-1031. Best of Show will be selected from the Champion/Reserve Champion Junior Does, Senior Does, and Market Kid.

Fiber Goat Classes

Showmanship Classes MANDATORY

112 Cloverbud Fiber Goat Showmanship (participation ribbon)
113 Novice Fiber Goat Showmanship (Any age youth having never shown before)
114 Junior Fiber Goat Showmanship (13 years of age and under as January 1 of the current year)
115 Senior Fiber Goat Showmanship (14 years of age and over as of January 1 of the current year)

2000 Fiber Goat; 0-4 months
2001 Fiber Goat; 4-8 months
2002 Fiber Goat; over 8 months
2003 Fiber Goat; Jr. Whether; under 1
2004 Fiber Goat; Sr. Whether; over 1
2005 Pack Goat

This is a competition class in which goats will be judged on their ability to carry a pack with an appropriate weight in it through a "trail" of obstacles simulating a trail out on a hike. Classes may be divided or combined at the discretion of Superintendents accordingly dependent on the number of entries.

4-H HORSE - SECTION 005

4-H Superintendent - Kathy Scalisi
Gymkhana - Wednesday, 8/2/23 9 a.m.
Western & Hunt Seat and Driving – Thursday, 8/3/23, 9 a.m.
Horse Show Rings
Judge Sandy Croote

HEALTH DEPARTMENT REQUIREMENTS

1. NO WATER HOSES TO TOUCH THE GROUND, INCLUDES BARN AND WASH RACK
2. Backflow devices MUST be used on all hoses
 - a. Any gated connector or Y connector must have a backflow preventer before and after the connection.
 - b. If you do not have a backflow preventer please go to the Fair office and sign one out.
3. Wheel barrows, buckets, any open containers cannot be left with manure where it can collect rainwater.
4. If you have any question about Health Department Requirements please reach out to the fair office.

All 4-H horses **MUST** register Wednesday morning and stay from Wednesday through Sunday. Exceptions may be made only if stalls are needed for the Open Horse Show, and then horses may be dismissed on Friday evening. If a horse leaves early, exhibitor will lose horse show premiums and it will be up to the horse show committee if that horse/rider will be able to participate in next year's 4-H horse shows.

State Fair Procedure

Exhibitors who wish to be considered for State Fair MUST register at the announcer's stand before the start of that day's show. **NEW – ALL State Fair entry forms must be handed in at announcer stand by Friday 6:00 p.m.** Entries will be reviewed to confirm eligibility and to be sure all paperwork is attached. Entries not handed in and approved by the Horse Science Committee will not be eligible to participate at State Fair. Please read the **NY State 4-H Equine Show Rule Book**. (copy at announcer stand or online).

1. Exhibitors may enter ONLY those classes in the state show in which they received a "blue-excellent" award. One (1) class may be entered in which "red-good" rating was awarded at the county/regional show.
2. Exhibitors may not enter a State show in which they were dismissed from the ring, received a no score or time, or received a "no award" regardless of the reason.
4. If a 4-Her qualifies for State Fair, fills out the necessary paperwork, etc. and then does not attend, it will be up to the 4-H Horse Committee to determine eligibility for participation in the following year's State Fair.
5. For Dressage, Musical Kurs, Western Dressage and SaddleSeat, exhibitor must bring a score sheet from a qualifying show.
6. Anyone showing a mule automatically qualifies for State Fair.

NOTATIONS

* Denotes classes for State Fair eligibility

Denotes a Non Point class

** Novice/Beginner Over Fences Classes are for riders and/or horses that have limited jumping experience. **Rider or horse may not cross enter in any other Over Fences classes.** Classes are not eligible for state fair; however, points will count towards end of day.

DIVISIONS

All riders and horses must be evaluated for entered level.

1. *Senior - Horse is over 14.2 hands (58") and rider is 14 years or older. W/T/C.
2. *Junior - Horse is over 14.2 hands (58") and rider is 8 -13 years old. W/T/C.
3. *Pony - Pony is 14.2 hands (58") and under. W/T/C.
4. Walk/Trot/Canter - No Leads to Count (NLC)
5. Walk/Trot –
6. NEW -Green Walk/Trot
7. Lead Line - The rider is 5-8 years old
8. Cloverbud –The rider is 5-8 years old and has been evaluated to ride

Lead Line and Cloverbud classes will be combined. Other classes may be combined but will be judged separately.

HORSE HERDSMANSHIP —Mandatory Participation

To encourage 4-H animal exhibitors to maintain clean, attractive, educational displays. Please read the County Fair Herdsmanship Guidelines. Horse exhibitors must also complete a display for Martin Hall.

Exhibitors MUST participate in BOTH areas.

Display- Create a display to be displayed in Martin Hall for the week. Some exhibit examples include: breed, tack, style of riding, horse care, horses in history

Barn/Stall- Exhibitor's appearance and availability.

Neatness of the area, cleanliness of stall. Fresh hay and water.

Class No.

011 Cloverbud 5 through 8-year-old members Receives a ribbon.

013 Junior-ages at least 9 and less than 14 years as of January 1st of the current year.

014 Senior- ages must be at least 14 years old as of January 1st of the current year.

FITTING & SHOWMANSHIP CLASSES - Mandatory

Exhibitors MUST participate in the Fitting & Showmanship class(es) for each show style in which they participate to be eligible for end of day championships and their 4-H premiums.

SUPREME FITTING AND SHOWMANSHIP

Exhibitors must be at Senior, Junior, or Pony level and will be asked to show their horse/pony first, and then through a random draw will show another horse/pony.

Class will be held **Thursday** after the Western Show (before costume).

Class No.

015 – Gymkhana, Western, or Hunt Seat/Driving

GYMKHANA

Wednesday - 9 a.m.

Fitting and Showmanship Classes

- 100 Fitting and Showmanship, Senior
- 101 Fitting and Showmanship, Walk/Trot
- 102 Fitting and Showmanship, Junior
- 103 Fitting and Showmanship, Pony
- 104 Fitting and Showmanship, Walk/Trot/Canter (NLC)
- 105 Fitting and Showmanship, Mini

Dash - NOT STATE FAIR CLASSES

- 106 Dash, Senior
- 107 Dash, Walk/Trot
- 108 Dash, Junior
- 109 Dash, Leadline/Cloverbud
- 110 Dash, Pony
- 111 Dash, Walk/Trot/Canter (NLC)
- 112 Dash, Mini

Figure 8 Classes

- 113 Figure 8, Senior*
- 114 Figure 8, Walk/Trot
- 115 Figure 8, Junior*
- 116 Figure 8, Lead line/Cloverbud
- 117 Figure 8 Pony*
- 118 Figure 8, Walk/Trot/Canter (NLC)
- 119 Figure 8, Mini

Cloverleaf Barrel Classes

- 120 Cloverleaf Barrels, Senior*
- 121 Cloverleaf Barrels, Walk/Trot
- 122 Cloverleaf Barrels, Junior*
- 123 Cloverleaf Barrels, Lead Line/Cloverbud
- 124 Cloverleaf Barrels, Pony*
- 125 Cloverleaf Barrels, Walk/Trot/Canter (NLC)
- 126 Cloverleaf Barrels, Mini

Straight Line Barrel Classes

- 127 Straight Line Barrels, Senior*
- 128 Straight Line Barrels, Walk/Trot
- 129 Straight Line Barrels, Junior*
- 130 Straight Line Barrels, Lead Line/Cloverbud
- 131 Straight Line Barrels, Pony*
- 132 Straight Line Barrels, Walk/Trot/Canter (NLC)
- 133 Straight Line Barrels, Mini

Texas T Barrel Classes

- 134 Texas T Barrels, Senior*
- 135 Texas T Barrels, Walk/Trot
- 136 Texas T Barrels, Junior*
- 137 Texas T Barrels, Pony*
- 138 Texas T Barrels, Walk/Trot/Canter (NLC)
- 139 Texas T Barrels, Mini

Bleeding Heart Barrel Classes

- 140 Bleeding Heart, Senior*
- 141 Bleeding Heart, Walk/Trot
- 142 Bleeding Heart, Junior*
- 143 Bleeding Heart, Pony*
- 144 Bleeding Heart Walk/Trot/Canter (NLC)
- 145 Bleeding Heart, Mini

Quadrangle Barrel Classes

- 146 Quadrangle Barrels, Senior*
- 147 Quadrangle Barrels, Walk/Trot
- 148 Quadrangle Barrels, Junior*
- 149 Quadrangle Barrels, Pony*
- 150 Quadrangle Barrels, Walk/Trot/Canter (NLC)
- 151 Quadrangle Barrels, Mini

Barrel Keyhole Classes

- 152 Barrel Keyhole, Senior*
- 153 Barrel Keyhole, Walk/Trot
- 154 Barrel Keyhole, Junior*
- 155 Barrel Keyhole, Pony*
- 156 Barrel Keyhole, Walk/Trot/Canter (NLC)
- 157 Barrel Keyhole, Mini

Pole Bending Classes

- 158 Pole Bending, Senior*
- 159 Pole Bending, Walk/Trot
- 160 Pole Bending, Junior*
- 161 Pole Bending, Pony*
- 162 Pole Bending, Walk/Trot/Canter (NLC)
- 163 Pole Bending, Mini

HUNT SEAT AND DRIVING

Thursday - 9 a.m.

Note: To qualify for State Fair – jumps will be set at the maximum heights- 2' for Ponies, 2'6" for Juniors, and 3' for Seniors to ensure riders/horses are prepared.

Fitting & Showmanship Classes

- 300 Fitting & Showmanship, Senior*
- 301 Fitting & Showmanship, Walk/Trot
- 302 Fitting & Showmanship, Junior*
- 303 Fitting & Showmanship, Pony*
- 304 Fitting & Showmanship, Walk/Trot/Canter (NLC)
- 305 Fitting & Showmanship Green Walk/Trot
- 306 Fitting & Showmanship, Mini
- 307 Conformation Class# (Horse 2 Yrs. and Under)

Hunt Seat Equitation Classes

- 308 Hunt Seat Equitation, Senior*
- 309 Hunt Seat Equitation, Walk/Trot
- 310 Hunt Seat Equitation, Junior*
- 311 Hunt Seat Equitation, Lead Line/Cloverbud
- 312 Hunt Seat Equitation, Pony*
- 313 Hunt Seat Equitation, Walk/Trot/Canter (NLC)
- 314 Hunt Seat Equitation Green Walk/Trot

Hunter Under Saddle Classes

- 315 Hunter Under Saddle, Senior*
- 316 Hunter Under Saddle, Walk/Trot
- 317 Hunter Under Saddle, Junior*
- 318 Hunter Under Saddle, Pony*
- 319 Hunter Under Saddle, Walk/Trot/Canter (NLC)

Hunter Pleasure Classes

- 320 Hunter Pleasure, Senior*
- 321 Hunter Pleasure, Walk/Trot
- 322 Hunter Pleasure, Junior*
- 323 Hunter Pleasure, Lead Line/Cloverbud
- 324 Hunter Pleasure, Pony*
- 325 Hunter Pleasure, Walk/Trot/Canter (NLC)
- 326 Hunter Pleasure Green Walk/Trot

Command Classes

- 327 Command, Senior*
- 328 Command, Walk/Trot
- 329 Command, Junior*
- 330 Command, Pony*
- 331 Command, Walk/Trot/Canter (NLC)
- 332 Command Green Walk/Trot
- 333 Command, Mini

All Around Classes

- 334 All Around (Equitation and Pleasure), Walk/Trot

- 335 All Around (Equitation and Pleasure), Lead Line/Cloverbud

Hunter Hack Classes

- 336 Hunter Hack, Senior*
- 337 Hunter Hack, Junior*
- 338 Hunter Hack, Pony*
- 339 Hunter Hack, Walk/Trot/Canter (NLC)

Over Fences Classes

- 340 Walk/Trot Equitation over Cross Rails
- 341 Walk/Trot Working Hunter over Cross Rails
- 342 Cross Rails, Mini
- 343 Equitation Over Fences, Senior*
- 344 Working Hunter Over Fences, Senior*
- 345 Equitation Over Fences, Junior*
- 346 Working Hunter Over Fences, Junior*
- 347 Equitation Over Fences, Pony*
- 348 Working Hunter Over Fences, Pony*
- 349 Equitation Over Fences, Walk/Trot/Canter
- 350 Working Hunter Over Fences, Walk/Trot/Canter

*NEW Novice/Beginner Over Fences Classes (N/B)***

- 351 N/B Senior Equitation Over Fences
- 352 N/B Senior Working Hunter Over Fences
- 353 N/B Junior Equitation Over Fences
- 354 N/B Junior Working Hunter Over Fences
- 355 N/B Pony Equitation Over Fences
- 356 N/B Pony Working Hunter Over Fences

Trail Classes

- 357 Trail, Senior*
- 358 Trail, Walk/Trot
- 359 Trail, Junior*
- 360 Trail, Pony*
- 361 Trail, Walk/Trot/Canter
- 362 Command Green Walk/Trot
- 363 Trail, Mini

Fitting & Showmanship Driving Classes

- 364 Fitting & Showmanship, Senior*
- 365 Fitting & Showmanship, Junior*
- 366 Fitting & Showmanship, Mini

Pleasure Driving Horse, Pony, or Mini Classes

- 367 Senior*
- 368 Junior*

Reinsmanship Horse, Pony, or Mini Classes

- 369 Senior*
- 370 Junior*

Obstacle Driving Horse, Pony, or Mini Classes

- 371 Senior*
- 372 Junior*

Other Classes

- 373 Costume Class

WESTERN

Thursday, after Hunt Seat

Fitting & Showmanship Classes

- 200 Fitting & Showmanship, Senior*
- 201 Fitting & Showmanship, Walk/Jog
- 202 Fitting & Showmanship, Junior*
- 203 Fitting & Showmanship, Pony*
- 204 Fitting & Showmanship, Walk/Jog/Canter

(NLC)

- 205 Fitting & Showmanship, Green Walk/Jog
- 206 Fitting & Showmanship, Mini
- 207 Conformation Class# (Horse 2 yrs and

under)

Stock Seat Equitation Classes

- 208 Stock Seat Equitation, Senior*
- 209 Stock Seat Equitation, Walk/Jog
- 210 Stock Seat Equitation, Junior*
- 211 Stock Seat Equitation, Lead Line/Cloverbud
- 212 Stock Seat Equitation, Pony*
- 213 Stock Seat Equitation, Walk/Jog/Lope

(NLC)

- 214 Stock Seat Equitation, Green Walk/Jog

Western Pleasure Classes

- 215 Western Pleasure, Senior*
- 216 Western Pleasure, Walk/Jog
- 217 Western Pleasure, Junior*
- 218 Western Pleasure, Lead line/Cloverbud
- 219 Western Pleasure, Pony
- 220 Western Pleasure, Walk/Jog/Lope (NLC)
- 221 Western Pleasure, Green Walk/Jog

Western Command Classes

- 222 Western Command, Senior*
- 223 Western Command, Walk/Jog
- 224 Western Command, Junior*
- 225 Western Command, Pony*
- 226 Western Command, Walk/Jog/Lope (NLC)
- 227 Western Command, Green Walk/Jog
- 228 Western Command, Mini

All Around Classes (Equitation and Pleasure)

- 229 All Around, Walk/Jog
- 230 All Around, Lead line/Cloverbud

Western Riding Classes

- 231 Western Riding, Senior*
- 232 Western Riding, Junior*
- 233 Western Riding, Pony*
- 234 Western Riding, Walk/Jog/Lope (NLC)

Western Horsemanship Classes

- 235 Western Horsemanship, Senior*
- 236 Western Horsemanship, Junior*
- 237 Western Horsemanship, Pony*
- 238 Western Horsemanship, Walk/Jog/Lope

(NLC)

Western Road Hack Classes

- 239 Western Road Hack, Senior*
- 240 Western Road Hack, Junior*
- 241 Western Road Hack, Pony*
- 242 Western Road Hack, Walk/Jog/Lope (NLC)

Trail Classes

- 243 Trail, Senior*
- 244 Trail, Walk/Trot
- 245 Trail, Junior*
- 246 Trail, Pony*
- 247 Trail, Walk/Trot/Canter (NLC)
- 248 Trail Green Walk/Trot
- 249 Trail, Mini

Other Classes

- 250 Costume Class

POULTRY/FOWL - SECTION 006

4-H Superintendent: Taylor Powers
4-H Poultry Judging – Wednesday, 8/2/23 10 a.m.
Judge Jamie Matts

HEALTH DEPARTMENT REQUIREMENTS

1. NO WATER HOSES TO TOUCH THE GROUND, INCLUDES BARN AND WASH RACK
2. Backflow devices MUST be used on all hoses
 - a. Any gated connector or Y connector must have a backflow preventer before and after the connection.
 - b. If you do not have a backflow preventer please go to the Fair office and sign one out.
3. Wheel barrows, buckets, any open containers cannot be left with manure where it can collect rainwater.
4. If you have any question about Health Department Requirements please reach out to the fair office.

Rules:

- 1 All poultry except waterfowl shown at state or county fairs shall have originated from U.S. Pullorum clean flocks or have a negative Pullorum-Typhoid Test within 90 days of the fair. Call Agriculture and Markets for more information at 518-457-3502.
- 2 All poultry exhibited must be owned and cared for by the exhibitor, as a project, since June 1.
- 3 All birds must be of a PUREBRED standard or bantam breed, except for meat or egg production birds which may be crossbred.
- 4 The 4-H Superintendent has the authority to limit the number of entries. There are no limits at this time.
- 5 All birds must be mature enough to be judged, which is at least 5-months of age in most breeds.
- 6 Cock refers to a male bird over the age of one year. A cockerel is a male bird of less than one year of age. Hen refers to a female bird of over one year, while a pullet is a female bird of less than one year of age.
- 7 The fair will not be responsible for loss or damage, to exhibitors for any reason. The birds being entered are done so at the sole risk of the owner.
- 8 All exhibitors are to care for their own birds or arrange for them to be cared for. The fair will provide cages.
- 9 The American Standard of Perfection and The Bantam Standard of Perfection will be the guide in judging except in the meat and egg production classes.
- 10 Ribbons will be placed on the group award system (Danish System), excellent, good, worthy.
- 11 All birds are subject to inspection PRIOR TO CAGING by a NYS Dept. of Ag & Markets technician or his/her appointed representative. No un-inspected birds shall be permitted to be caged or permitted to remain on the fairgrounds. Birds shall be inspected for signs of disease or parasites (lice and mites). Any birds exhibiting such signs will be immediately removed from the grounds.
- 12 All exhibits must be in place by 8 p.m. Monday and remain until 8 p.m. Sunday. Exhibitors removing exhibits before 8 p.m. will forfeit all premiums that may have been awarded.
- 13 All cages will be cleaned by the exhibitor at time exhibit is picked up or all premiums will be forfeited.
- 14 Trio classes must have one male and two females of the same age and breed. A trio under 1 year of age will be considered a young trio, a trio over 1-year old will be considered an old trio. **No premium.**
- 15 Poultry exhibitors must be present at the poultry judging Wednesday, August 2 starting with showmanship at 10 a.m. Exhibitors are expected to present their bird(s) to the judge at this time. If the exhibitor is not present, the bird(s) will not be judged.
- 17 **SHOW ATTIRE FOR POULTRY:** White collared shirt w/dark pants.

POULTRY SHOWMANSHIP - MANDATORY

Wednesday, August 2, 10 am.

Class No.

- 796A Cloverbud 5 through 8-year-old members with one-on-one supervision by an adult or experienced older teen who maintains ultimate control of the animal. Receives a ribbon.
796B Novice (any age youth having never shown before)
796C Junior-ages at least 9 and less than 14 years as of January 1st of the current year.
796D Senior- ages must be at least 14 years old as of January 1st of the current year.

Each exhibitor will be required to take part in showmanship. Each exhibitor will present his or her own bird to the judge on an individual basis. Each exhibitor will be judged on appearance, handling of bird and presentation to the Judge. Questions will be asked on the exhibitor's breed, also on parts of bird. The bird shown in showmanship must also be shown in its breed class.

HERDSMANSHIP AWARD - MANDATORY

To encourage 4-H animal exhibitors to maintain clean, attractive, educational displays. Using the Danish System, all animal exhibits will be evaluated daily on cleanliness and neatness of the area, availability of food and water to the animal, and the 4-H exhibitor's appearance and availability to the public. Decorations and ornaments will not be evaluated as part of these classes.

Class No.

- 005 Cloverbud 5 through 8-year-old members Receives a ribbon.
007 Junior-ages at least 9 and less than 14 years as of January 1st of the current year.
008 Senior- ages must be at least 14 years old as of January 1st of the current year.

PUREBRED POULTRY CLASSES

Please enter by Class Number as outlined below, and indicate the sex/age of the exhibit by designating as follows:

c = cock h = hen k = cockerel p = pullet

Example: Male bird over 1 year of age entered into Class #488 = 488C

Class No.

- 751 Young Trio
752 Old Trio
753 Any other recognized breed not listed below
AMERICAN BREEDS:
754 Jersey Giant (any color variety)
755 New Hampshire
756 Plymouth Rock (any color variety)
757 Rhode Island Red
758 Wyandotte (any color variety)
759 Any Other American Breed (Dominique, Java, Buckeye, Chantecler, Lamona, Holland, Delaware)

ENGLISH BREEDS:

- 760 Australorp
761 Orpington (any color variety)

- 762 Any Other English Breed
(Dorking, Redcap, Cornish, Sussex)

ASIATIC BREEDS:

763. Cochin (any color variety)
764. Brahma (any color variety)
765. Langshan

MEDITERRANEAN BREEDS:

- 766 Andalusian (any color)
767 Buttercup
768 Leghorn
769 Any Other Mediterranean Breed (Minorca, Spanish, Ancona, Sicilian, Buttercups, Catalana)

CONTINENTAL BREEDS:

- 770. Polish (any color)
- 771. Hamburg (any color)
- 772. Faverolle (any color)
- 773. Any Other Continental Breed (Campine, Lakenvelder, Houdan, Crevecoeur, La Fleche, Welsummer, Barnvelder)

ALL OTHER STANDARD BREEDS:

- 774. Old English Game (any color variety)
- 775. Phoenix
- 776. Araucana
- 777. Any Other Standard Breed (Modern Game, Sumatra, Malay, Cubalaya, Yokohama, Aseel, Shamo, Sultan, Frizzle, Naked Neck, Ameraucana)

BANTAM-SIZED CHICKENS

MODERN GAMES:

- 778. Modern Game (any color variety)

OLD ENGLISH GAME:

- 779. Old English Game (any color)

SINGLE-COMB CLEAN LEG:

- 780. Leghorn
- 781. New Hampshire
- 782. Rhode Island Red
- 783. Any Other SCCL Breed (Ancona, Andalusian, Australorp, Campine, Delaware, Dorking, Japanese, Naked Necks, Phoenix, Plymouth

Rock, Dutch)

ROSE-COMB CLEAN LEG:

- 784. Rosecomb
- 785. Antwerp Belgian
- 786. Sebright
- 787. Wyandotte
- 788. Any Other RCCL Breed (Dominique, Hamburg)

ALL OTHER COMB CLEAN LEG:

- 789. Cornish
- 790. Polish
- 791. Any Other AOCCL Breed (Araucana, Houdan, La Fleche, Chantecler)

FEATHER LEGGED:

- 792. Cochin (any color variety)
- 793. D'Uccle
- 794. Silkies
- 795. Any Other FL Breed (Booted, Brahma, Faverolle, Frizzle, Langshan, Sultan)

Only birds listed in the American Standard of Perfection will be accepted in these classes. This includes large fowl and Bantams.

PRODUCTION CLASSES

Egg Production Classes

Birds for egg production may be either purebred varieties or crossbred stock. These birds will be judged on health, vigor, and egg production characteristics.

Class No.

- 797H Hen
- 798P Pullet

Meat Production Classes

Birds for meat production may be either purebred varieties or crossbred stock. These birds will be judged on health, vigor, and meat production characteristics.

- 799F Fryers -- 8-12 weeks.
- 800R Roasters -- 12-20 weeks.
- 801C Capons, Caponettes -- 12 weeks to 6 months.
- 802F Fowl over 20 weeks.

DUCKS/GEESE - SECTION 007

- All **DUCKS** are shown singly (Duck or Drake).
- Females are called Ducks and Males are called Drakes.
- Any standard breed may be shown. No crossbreeds are to be shown.
- Exhibitor is responsible for providing a large water pan for their exhibit.

Class No. (DUCKS)

- 875 Young Duck (less than 1-year-old)
- 876 Young Drake (less than 1-year-old)
- 877 Old Duck (more than 1-year-old)
- 878 Old Drake (more than 1-year-old)
- 879 Duck Showmanship – Novice
- 880 Duck Showmanship

- All **GEESE** are shown singly (Goose or Gander).
- A female is called a goose and a male is called a gander.
- Any standard breed may be shown. No crossbreeds are to be shown.

Class No. (GEESE)

- 881 Young Goose (less than 1-year-old)
- 882 Young Gander (less than 1-year-old)
- 883 Old Goose (more than 1-year-old)
- 884 Old Gander (more than 1-year-old)
- 885 Duck Herd

HERDSMANSHIP AWARD - MANDATORY

To encourage 4-H animal exhibitors to maintain clean, attractive, educational displays. Using the Danish System, all animal exhibits will be evaluated daily on cleanliness and neatness of the area, availability of food and water to the animal, and the 4-H exhibitor's appearance and availability to the public. Decorations and ornaments will not be evaluated as part of these classes.

Class No.

- 005 Cloverbud 5 through 8-year-old members Receives a ribbon.
- 007 Junior-ages at least 9 and less than 14 years as of January 1st of the current year.
- 008 Senior- ages must be at least 14 years old as of January 1st of the current year.

TURKEYS/PEACOCKS - SECTION 008

- Any standard breed may be shown, no crossbreeds will be shown.

Class No.

- 890 Young Hen (less than 1-year-old)
- 891 Young Tom (less than 1-year-old)
- 892 Old Hen (more than 1-year-old)
- 893 Old Tom (more than 1-year-old)
- 894 Peahen (female)
- 895 Peacock (male)

HERDSMANSHIP AWARD - MANDATORY

To encourage 4-H animal exhibitors to maintain clean, attractive, educational displays. Using the Danish System, all animal exhibits will be evaluated daily on cleanliness and neatness of the area, availability of food and water to the animal, and the 4-H exhibitor's appearance and availability to the public.

Decorations and ornaments will not be evaluated as part of these classes.

Class No.

- 005 Cloverbud 5 through 8-year-old members Receives a ribbon.
- 007 Junior-ages at least 9 and less than 14 years as of January 1st of the current year.
- 008 Senior- ages must be at least 14 years old as of January 1st of the current year.

EGGS - SECTION 009

Class No.

- 901 Dozen white eggs 21-23 ounces
- 902 Dozen white eggs 24-27 ounces
- 903 Dozen brown eggs 21-23 ounces
- 904 Dozen brown eggs 24-27 ounces
- 905 Dozen cream or tinted eggs 21-23 ounces
- 906 Dozen cream or tinted eggs 24-27 ounces

RABBITS - SECTION 010

Superintendent: Jessica Powers
4-H Rabbit Judging – Wednesday, 8/2/23 8 a.m. - Rabbit Barn
Chris Ross-Showmanship Judge
Michael Ross-Breed Judge

HEALTH DEPARTMENT REQUIREMENTS

1. NO WATER HOSES TO TOUCH THE GROUND, INCLUDES BARN AND WASH RACK
2. Backflow devices MUST be used on all hoses
 - a. Any gated connector or Y connector must have a backflow preventer before and after the connection.
 - b. If you do not have a backflow preventer please go to the Fair office and sign one out.
3. Wheel barrows, buckets, any open containers cannot be left with manure where it can collect rainwater.
4. If you have any question about Health Department Requirements please reach out to the fair office.

Rules and Regulations:

- 1 Show Attire – dark pants; long-sleeved white shirt.
- 2 Each exhibitor and parents should read and be familiar with the rules.
- 3 All rabbits will be judged on the group award basis -- excellent, good, worthy (Danish System) but ARBA Standards will be followed.
- 4 Animals showing signs of sickness or disease will be removed from the show.
- 5 All rabbits must be in place by 7 p.m. Monday night and remain until 8 p.m. Sunday. Exhibitors removing rabbits before 8 p.m. will forfeit all premiums.
- 6 All cages will be cleaned by exhibitor or all premiums will be forfeited.
- 7 Cages will be furnished by the Fair Association and 4-H members and leaders.
- 8 The fair will not be responsible for loss or damage. The rabbits being entered are done so at the sole risk of the owner.
- 9 Best of Breed and Reserve of Breed, Best of Show and Reserve Best of Show will be selected from class winners.
- 11 All rabbits must be owned and cared for by June 1.
- 12 All rabbits must have a PERMANENT TATTOO IN THE LEFT EAR.
- 13 Mixed Breed is reserved for those animals that are not eligible to compete in Pure Bred animal classes. Animals will be judged on condition. Best Mixed Breed will be chosen, but will not be eligible to compete for Best in Show.
- 14 Classes will be divided by varieties if enough entries warrant, judge's discretion.
- 15 All rabbit exhibitors will be required to show in showmanship on Tuesday at 9 a.m. If an exhibitor is not present for Showmanship, his or her rabbits will not be judged.
- 16 The rabbit shown in Showmanship must also be shown in its breed class.
- 17 Rabbit exhibitors must be present at the Rabbit Judging. Exhibitors are expected to present their rabbit(s) to the judge. If there is a judging conflict a 4-H exhibitor may be appointed to show.
- 18 Classes will be judged in the order that they appear in this book.
- 19 To be eligible to compete for Best of Breed an animal must have received a blue ribbon in their class.
- 20 Rabbit owners are responsible for the complete **care** of their animals while they are at the fairgrounds.
- 21 Rabbit entries are limited to two (2) animals per class and a total of 10 animals.
22. Animals may be sold during the fair; however may NOT be removed until 8 p.m. on Sunday.

Herdsmanship Classes - MANDATORY

To encourage 4-H animal exhibitors to maintain clean, attractive, educational displays. Using the Danish System, all animal exhibits will be evaluated daily on cleanliness and neatness of the area, availability of food and water to the animal, and the 4-H exhibitor's appearance and availability to the public. Decorations and ornaments will not be evaluated as part of these classes.

Class No.

- 005 Cloverbud 5 through 8-year-old members Receives a ribbon.
- 007 Junior-ages at least 9 and less than 14 years as of January 1st of the current year.
- 008 Senior- ages must be at least 14 years old as of January 1st of the current year.

RABBIT SHOWMANSHIP **Wednesday, 8 a.m. – Rabbit Barn**

Each exhibitor will present his or her own rabbit to the judge on an individual basis. Each exhibitor will be judged on appearance, handling of animal and presentation to the judge. Questions will be asked on the exhibitor's breed also on grooming and parts of the rabbit. **Showmanship will be required of all exhibitors.** The rabbit shown in Showmanship must also be shown in its breed class. The winner in each division will compete in the next higher division the following year.

The Champion Showman will compete in a separate class (Master Showman).

The rabbit must earn a blue to be eligible for State Fair.

****NOTE:** Only classes listed in this book will be judged.

Class No.

- 1000 Cloverbud – ages 5-8 years old
- 1001 Novice-Showmanship. First-year exhibitor (any age).
- 1002 Junior Showmanship – Exhibitors 13-years of age and under as of January 1
- 1003 Senior Showmanship – Exhibitors 14-years and over.

1010 **4-H Pet Care Project**

This class is for 4-H members who own no more than two (2) rabbits. Entries in this class will not be eligible for breed class, "Best of Show" or State Fair.

1011 **Exhibition Class**

Youth interested in EXHIBITING animals must pre-register on the entry form, for approval from the Superintendent. Animals will be for display, NOT judged

Ribbons will be awarded on the Danish System only. The following will be considered:

- (a) **Condition** – This class will be judged on flesh and fur condition, **not** on confirmation.
- (b) **Knowledge** – Questions may be asked on general care of handling of rabbits.

WOOL BREEDS CLASSES

Senior Bucks – over 6 mos.

Senior Does – over 6 mos.

Junior Bucks – under 6 mos., but at least 3 mos.

Junior Does – under 6 mos., but at least 3 mos.

Wool Breed Classes	Sr. Buck	Sr. Doe	Jr. Buck	Jr. Doe
English Angora	1015	1016	1017	1018
French Angora	1023	1024	1025	1026
Giant Angora	1035	1036	1037	1038
Satin Angora	1039	1040	1041	1042
Jersey Woolly				
Self	1047	1048	1049	1050
Shaded	1051	1052	1053	1054
Agouti	1055	1056	1057	1058
AOV	1059	1060	1061	1062
Tan Patern	1063	1064	1065	1066
Broken	1067	1068	1069	1070
American Fuzzy Lop				
Broken	1071	1072	1073	1074
Solid	1075	1076	1077	1078
Lionhead	1079	1080	1081	1082

Meat Rabbit Classes

- Enrolled by June 1

-Minimum weight 3.5 lbs. – determined at Tuesday’s weigh-in.

Meat class exhibits may be either crossbred or purebred, but may **NOT** have been shown in any other class. Classes are as follows:

Class No.

1771 **Roaster Class:** All rabbits entered in this class must be under six months of age; maximum weight eight pounds, minimum weight five and a half pounds. Exhibitors may show two rabbits in the roaster class

1772 **Stewer Class:** All rabbits entered in this class must be six months of age and over; minimum weight eight pounds. Exhibitors may show two rabbits in the stewer class

1773 **Single Fryer Class:** All rabbits entered in this class may not be over ten weeks of age; maximum weight 3.5-5.5 pounds. May come from your meat pens. Exhibitors may show two rabbits in the single fryer class.

1774 **Meat Pen Class:** Meat pens will consist of three rabbits - all the same breed and variety. Rabbits do not have to come from the same litter. Rabbits cannot be over ten weeks old and each rabbits weighs 3.5-.5.5 pounds. All rabbits must be weighed in the presence of the judge. If anyone rabbit in the pen weighs more than the maximum weight, the entire pen is eliminated. If anyone rabbit in the pen is disqualified, the whole pen becomes disqualified. Exhibitors may show two meat pens.

SIX CLASS BREEDS

Senior Bucks – over 8 mos.

Senior Does – over 8 mos.

Intermediate Bucks – 6-8 mos.

Intermediate Does – 6-8 mos.

Junior Bucks – under 6 mos., but at least 3 mos.

Junior Does - under 6 mos., but at least 3 mos.

Six Class Breeds	Sr.	Sr.	Int.	Int.	Jr.	Jr.
	Buck	Doe	Buck	Doe	Buck	Doe
Beveren	1107	1108	1109	1110	1111	1112
Californian	1125	1126	1127	1128	1129	1130
Champagne d'Argent	1131	1132	1133	1134	1135	1136
Checkered Giant	1137	1138	1139	1140	1141	1142
Cinnamon	1161	1162	1163	1164	1165	1166
Flemish Giant						
Fawn	1185	1186	1187	1188	1189	1190
Light Gray	1191	1192	1193	1194	1195	1196
Sandy	1197	1198	1199	1200	1201	1202
AOV	1203	1204	1205	1206	1207	1208
English Lop						
Solid	1221	1222	1223	1224	1225	1226
Broken	1227	1228	1229	1230	1231	1232
French Lop						
Solid	1233	1234	1235	1236	1237	1238
Broken	1239	1240	1241	1242	1243	1244
New Zealand						
Black	1245	1246	1247	1248	1249	1250
Broken	1251	1252	1253	1254	1255	1256
White	1257	1258	1259	1260	1261	1262
AOV	1263	1264	1265	1266	1267	1268
Palomino	1269	1270	1271	1272	1273	1274
Satin						
Black	1281	1282	1283	1284	1285	1286
Blue	1287	1288	1289	1290	1291	1292
Broken	1293	1294	1295	1296	1297	1298
Copper	1317	1318	1319	1320	1321	1322
Siamese	1329	1330	1331	1332	1333	1334
White	1335	1336	1337	1338	1339	1340
AOV	1341	1342	1343	1344	1345	1346
Silver Fox	1347	1348	1349	1350	1351	1352
Argente Brun	1359	1360	1361	1362	1363	1364
Other six class breeds	1365	1366	1367	1368	1369	1370

FOUR CLASS BREEDS

Senior Bucks – over 6 mos.

Senior Does – over 6 mos.

Junior Bucks – under 6 mos., but at least 3 mos.

Junior Does – under 6 mos., but at least 3 mos.

Fancy Breed Classes	Sr. Buck	Sr. Doe	Jr. Buck	Jr. Doe
Belgian Hare	1371	1372	1373	1374
Britannia Petite	1375	1376	1377	1378
Dutch				
Black	1383	1384	1385	1386
Blue	1387	1388	1389	1390
AOV	1391	1392	1393	1394
Dwarf Hotot	1407	1408	1409	1410
English Spot				
Black	1411	1412	1413	1414
Chocolate	1415	1416	1417	1418
Lilac	1419	1420	1421	1422
AOV	1431	1432	1433	1434
Florida White	1439	1440	1441	1442
Harlequin	1443	1444	1445	1446
Havana	1451	1452	1453	1454
Himalayan	1471	1472	1473	1474
Holland Lop				
Broken	1487	1488	1489	1490
Solid	1491	1492	1493	1494
Mini Lop				
Broken	1495	1496	1497	1498
Solid	1499	1500	1501	1502
Mini Rex				
Black	1503	1504	1505	1506
Blue	1507	1508	1509	1510
Broken	1511	1512	1513	1514
Castor	1519	1520	1521	1522
Himalayan	1531	1532	1533	1534
Opal	1543	1544	1545	1546
Otter	1547	1548	1549	1550
Tortoise	1551	1552	1553	1554
AOV	1559	1560	1561	1562

Fancy Breed Classes	Sr. Buck	Sr. Doe	Jr. Buck	Jr. Doe
Mini Satin				
Black	1563	1564	1565	1566
Blue	1567	1568	1569	1570
Broken	1571	1572	1573	1574
White	1575	1576	1577	1578
AOV	1579	1480	1581	1582

Four Class Breeds	Sr. Buck	Sr. Doe	Jr. Buck	Jr. Doe
Netherland Dwarf				
<i>Self</i>				
Black	1583	1584	1585	1586
Ruby Eyed White	1587	1588	1589	1590
AOV	1591	1592	1593	1594
<i>Shaded</i>				
Siamese Sable	1595	1596	1597	1598
Siamese Smoke Pearl	1599	1600	1601	1602
AOV	1603	1604	1605	1606
<i>Agouti</i>				
Chestnut	1607	1608	1609	1610
Chinchilla	1611	1612	1613	1614
AOV	1615	1616	1617	1618
<i>Tan Pattern</i>				
Otter	1619	1620	1621	1622
Silver Marten	1623	1624	1625	1626
AO Tan	1627	1628	1629	1630
AOV				
Broken	1631	1632	1633	1634
Himalayan	1635	1636	1637	1638
AOV	1639	1640	1641	1642
Polish				
Black	1643	1644	1645	1646
Broken	1647	1648	1649	1650
AOV	1651	1652	1653	1654
Rex				
Black	1655	1656	1657	1658
1659	1660	1661	1662	1663
Broken	1664	1665	1666	1667
Castor	1668	1669	1670	1671
White	1672	1673	1674	1675
AOV	1676	1677	1678	1679

Four Class Breeds	Sr. Buck	Sr. Doe	Jr. Buck	Jr. Doe
Rhinelanders	1680	1681	1682	1683
Silver Martin	1684	1685	1686	1687
Tan	1688	1689	1690	1691
Black	1692	1693	1694	1695
Chocolate	1696	1697	1698	1699
AOV	1700	1701	1702	1703

4-H COSTUME CLASS -- Saturday – “Rabbit Day” watch for the time.

Rules:

- Exhibitors must use a rabbit that they have exhibited in another class.
- This class will be judged on originality and creativity of the exhibitor and/or rabbit's costume.
- Costumes should present no possible danger to the rabbit.
- Duct tape may not be used on youth or rabbit
- If coloring the hair of the rabbit, only food coloring will be allowed.
- Only ONE entry can be made in the costume division.
- Exhibitors will give a short description, filled out the day of show.

Class No.

1704 4-H Rabbit Costume class

SHEEP - SECTION 012

4-H Superintendent: Michelle Kane
4-H Sheep Judging – Wednesday, 1 p.m.
Sheep Ring
Judge-Corey Hayes

HEALTH DEPARTMENT REQUIREMENTS

1. NO WATER HOSES TO TOUCH THE GROUND, INCLUDES BARN AND WASH RACK
2. Backflow devices MUST be used on all hoses.
 - a. Any gated connector or Y connector must have a backflow preventer before and after the connection.
 - b. If you do not have a backflow preventer, please go to the Fair office and sign one out.
3. Wheelbarrows, buckets, any open containers cannot be left with manure where it can collect rainwater.
4. If you have any questions about Health Department Requirements, please reach out to the fair office.

Breed Classes

4-H Flock Class - to consist of one ram (lamb or yearling) and 2 ewes of at least 2 different ages
Pair of Lambs - either sex, under 1 year
Dam-Offspring - registration papers available upon request where applicable

SHOW ATTIRE: Short or long sleeved white collared shirt w/dark pants.

Showmanship Classes - MANDATORY

Class No.

- 1 Cloverbud (participation ribbon only)
- 2 Novice (any age youth having never shown)
- 3 Junior (at least 9 and less than 14 years as of January 1 of the current year)
- 4 Senior (14-years of age and over as of January 1 of the current year)

First place winners in classes 2 – 4 will compete for Master Sheep Showman and Reserve Master Sheep Showman.

Note: Master Showmen may be exempt from further showmanship in that species at the discretion of the livestock committee/fair superintendent.

Herdsmanship Classes - MANDATORY

4-H animal exhibitors are encouraged to maintain clean, attractive, educational displays. Using the Danish System, all animal exhibits will be evaluated daily on cleanliness and neatness of the area, availability of food and water to the animal, and the 4-H exhibitor's appearance and availability to the public. Decorations and ornaments will not be evaluated as part of these classes.

Class No.

- 07 Cloverbud 5 through 8-year-old members Receives a ribbon.
- 09 Junior-ages at least 9 and less than 14 years as of January 1st of the current year.
- 10 Senior- ages must be at least 14 years old as of January 1st of the current year.

Market Classes

Grade, Purebred or crossbred ewe, or wether lambs born since January 1 of the current calendar year. Entries will be divided into classes as equally as possible after weighing in.

Class No.

- 20 Lightweight Market Lamb
- 21 Medium weight Market Lamb
- 22 Heavyweight Market Lamb
- 23 Auction Lamb
- 24 Pen of Two Market Lambs - to consist of two grades, purebred or crossbred ewe, ram or wether lambs born since January 1, of current calendar year. Must be shown in the appropriate individual class to be eligible for this class.

Best Bred and Owned Class

Class No.

- 27 To enter this class, exhibitor must have owned dam at time of lambing. Breeding and market animals can be entered.

Fleece Classes

-Do not tie fleeces with twine.

-Bring in a plastic bag.

Class No.

70 Fine Wool (64's and finer-22 micron)

71 Medium Wool (50's thru 62's-22-30 micron)

72 Long Wool (48's and coarser-31 micron)

73 Natural Colored Wool

SPRING RAM - born after Jan 1 (SRL)
 FALL RAM – born Sept 1-Dec 31 (FRL)
 JUNIOR YEARLING RAM - born after January 1 of the previous year (JYR)
 SENIOR YEARLING RAM – born between Sept. 1-Dec 31 of the previous year (SYR)
 SPRING EWE - born after Jan 1(SEL)
 FALL EWE LAMB - born Sept 1-Dec 31 (FEL)
 JUNIOR YEARLING EWE - born after January 1 of the previous year (1 year and under 2) (JYE)
 SENIOR YEARLING EWE - born between Sept. 1-Dec 31of the previous year (1 year and under 2) (SYE)
 MATURE EWE over 2 years (ME)

Breed	SRL	FRL	JYR	SYR	SEL	FEL	JYE	SYE	ME	4-H FLOCK	PAIR OF LAMB	DAM & OFFSPRING	Pair of Yearlings
Cheviot	300	301	302	303	304	305	306	307	308	309	310	311	312
Jacob	313	314	315	316	317	318	319	320	321	322	323	324	325
Corriedale	326	327	328	329	330	331	332	333	334	335	336	337	338
Dorset	339	340	341	342	343	344	345	346	347	348	349	350	351
Horned Dorset	352	353	354	355	356	357	358	359	360	361	362	363	364
Hampshire	365	366	367	368	369	370	371	372	373	374	375	376	377
Oxford	378	379	380	381	382	383	384	385	386	387	388	389	390
Rambouillet	391	392	393	394	395	396	397	398	399	400	401	402	403
Romney	404	405	406	407	408	409	410	411	412	413	414	415	416
Shropshire	417	418	419	420	421	422	423	424	425	426	427	428	429
Southdown	430	431	432	433	434	435	436	437	438	439	440	441	442
Suffolk	443	444	445	446	447	448	449	450	451	452	453	454	455
Tunis	456	457	458	459	460	461	462	463	464	465	466	467	468
Other Regist	469	470	471	472	473	474	475	476	477	478	479	480	481
Texel	482	483	484	485	486	487	488	489	490	491	492	493	494
Natural Colored	495	496	497	498	499	500	501	502	503	504	505	506	507
Grade (not registered)	508	509	510	511	512	513	514	515	516	517	518	519	520

SWINE - SECTION 013

Superintendent: Cindy Powers
4-H & Open Swine Showmanship & Judging
Thursday, 8/3/23 9 a.m. - Livestock Ring
Judge-Adam McFarland

HEALTH DEPARTMENT REQUIREMENTS

1. NO WATER HOSES TO TOUCH THE GROUND, INCLUDES BARN AND WASH RACK
2. Backflow devices MUST be used on all hoses
 - a. Any gated connector or Y connector must have a backflow preventer before and after the connection.
 - b. If you do not have a backflow preventer please go to the Fair office and sign one out.
3. Wheelbarrows, buckets, any open containers cannot be left with manure where it can collect rainwater.
4. If you have any questions about Health Department Requirements please reach out to the fair office.

Rabies information for swine:

- Currently, there is NOT a USDA licensed vaccine available for swine.
- The Otsego County Fair does NOT require a rabies vaccination.
- **NOTE:** Individual fairs can require animals for which there is no approved rabies vaccine to be vaccinated for rabies. The fair is responsible for notifying exhibitors. The New York State Fair requires rabies vaccination for all livestock species entering the grounds.

Adults, please refrain from ring side instructions during the Swine Show.

Swine must be identified by the USDA approved official ear tag. See

Showmanship Classes - MANDATORY

Class No.

- 001 Cloverbud (participation ribbon)
002 Novice (any age having never shown before)
003 Junior (13 years and under as of January 1)
004 Senior (14 years and over as of January 1)

*First and **second** place winners in classes 2-4 enter Master Swine Showman class.*

Note: Master Showmen may be exempt from further showmanship in that species at the discretion of the livestock committee/fair superintendent.

Herdsmanship Classes – MANDATORY

4-H animal exhibitors are encouraged to maintain clean, attractive, educational displays. Using the Danish System, all animal exhibits will be evaluated daily on cleanliness and neatness of the area, availability of food and water to the animal, and the 4-H exhibitor's appearance and availability to the public. Decorations and ornaments will not be evaluated as part of these classes.

Class No.

- 006 Cloverbud 5 through 8-year-old members Receives a ribbon.
008 Junior-ages at least 9 and less than 14 years as of January 1st of the current year.
009 Senior- ages must be at least 14 years old as of January 1st of the current year.

Hogs may be entered in either a Breeding or Market Class, NOT both.

Market Classes - Superintendent will divide classes after weigh-in at fair.

Class No.

- 29 All feeder and market pigs - Champion Market Swine will be selected from the first-place animal of each market class
- 30 Pen of Market Hogs - pen shall consist of three barrows and/or gilts owned by the exhibitor.
All must be shown in Market Classes.
- 31 Pen of Feeder Pigs - pen shall consist of three barrows and/or gilts owned by the exhibitor, not to exceed 60 lbs.
- 32 Pair of Gilts - born on or after January 1, of the current calendar year.

Sow & Litter

Class No.

- 33 Sow & Litter

Best Bred and Owned Class

Class No.

- 34 Best Bred and Owned – limit one entry per exhibitor.

Champion of each breed in Breeding Classes

Grand Champion of all Breeds

Champion of Market Classes

Supreme Champion Swine – Chosen from Champion Breeding Swine and Champion Market Hog

Breed Classes

DU = Duroc HA = Hampshire YO = Yorkshire CB = Cross Breed OB = Other Registered Breeds					
CLASS	DU	HA	YO	CB	OB
Sow - farrowed on or before July 1, of the preceding calendar year	451	456	461	466	471
Senior Fall Gilt - farrowed after July 1 of the preceding calendar year but before January 1 of the current calendar year	452	457	462	467	472
January Spring Gilt -farrowed on or after January 1 but before February 1, of the current calendar year	453	458	463	468	473
February Spring Gilt -farrowed on or after February 1 but before March 1, of the current calendar year	454	459	464	469	474
Junior Spring Gilt -farrowed on or after March 1, of the current calendar year	455	460	465	470	475

Martin Hall



Evaluation – Sunday, July 30, 2023, 1 - 4 p.m.

ALL Martin Hall entries **MUST** be pre-registered on the Martin Hall Entry Form.

Entry Forms must be postmarked or delivered on or **BEFORE Saturday, July 15** to the 4-H Office, 123 Lake Street, Cooperstown, NY 13326. **NO FAXES, SCANS OR PICTURES, MUST HAVE ORIGINALS.** The Martin Hall Entry Form may be delivered **July 15** to the Fairgrounds before 4 p.m.

PLEASE be aware....all 4-H entries MUST be pre-registered.

FAMILY & CONSUMER SCIENCE EXHIBITS

in Martin Hall

- 1 Carefully read directions for each class and section. Articles that are not carefully **labeled or do not meet the requirements outlined** in this fair book **may not be evaluated.** Each article exhibited must have been made during the present club year as part of the 4-H Project.
 - 2 Each article must have an Entry Card.
 - 3 Age on January 1, of the current year, will determine eligibility to classes which have age limits.
 - 4 A member may enter two (2) entries per class, unless otherwise specified. All exhibits will be judged on the Danish System.
 - 5 Each excellent exhibit will receive a blue award. Each good exhibit will receive a red award. Each worthy exhibit will receive a white award.
- All Family & Consumer Science exhibits will be evaluated on Sunday before the start of the fair from 1 - 4 p.m. Each exhibitor is responsible for presenting his or her exhibit to the evaluator.

Martin Hall Check-in at County Fair

NOTE: ALL green Entry Cards MUST be complete AND attached BEFORE the 4-H'ers project is to be evaluated!

- Each 4-H member will approach the registration desk.
- Find the proper line according to the last name:
A-D, E-H, I-O, P-Z
- Give your last name to find your Martin Hall Entry Form.
- Provide the **COMPLETED** green 4-H Entry Card(s) – one for each entry.
- The green Entry Card will be matched with the entry form.
- With green card clearance and your white Martin Hall Entry Form proceed to be evaluated.
- Make sure the Evaluator marks the award on your 4-H Martin Hall Entry Form.
- Return your white 4-H Martin Hall Entry Form to the box at check out.
- No Entry Form, or Code of Conduct = no premiums

4-H Fair Classes
Martin Hall
Section Index

Section CB	Cloverbud
Section A	Personal Development & Leadership
Section B	Special Exhibits & Events
Section C	Communications & Expressive Arts
Section D	Consumer & Family Sciences
Section DA	Food & Nutrition
Section DB	Fine Arts & Fine Crafts
Section DC	Hobby Crafts & Home Environment
Section DD	Wearable Art
Section DE	Textile & Clothing
Section DF	Child Development/Care
Section E	Photography & Digital Media
Section F	Horticulture
	Garden Entries
Section G	Environmental Education
Section H	Plant Pathology
Section I	Entomology
Section J	Science, Engineering & Technology

**SECTION CB
CLOVERBUD**

Class No. CB

4-H Cloverbud members ages 5-8 are invited to exhibit entries of items (in addition to animal classes) done as a result of the Cloverbud project book, or any other appropriate item in the area of foods, clothing, art objects, crafts, photography, scrapbooks, woodworking, natural resources, and gardening items. Cloverbuds will receive a Cloverbud ribbon. Participants will not be placed.

Class No. CBD

Cloverbud 4-H Club Display participants are open to clubs having five or more members enrolled. Display may depict or represent any club project, community service, recreation, citizenship or leadership. Include names of 4-H members and where people can get information about 4-H. The exhibit booth measures 4'x4'. Cloverbuds will receive a Cloverbud ribbon. Clubs will not be placed.

Each exhibitor must fill out the Martin Hall Entry Form and return it to the 4-H Office no later than Saturday, July 15. Entry Forms may be mailed or delivered by 4 p.m.

**SECTION A
PERSONAL DEVELOPMENT & LEADERSHIP**

TEEN LEADERS

- Teen Leader positions are limited to 4-H members who are 13-years of age and not have reached their 19th birthday by January 1 of the current year.

- Receive a Teen Leader Certificate and a premium for each day.
- Volunteer "pre-Teen" Leaders are welcome.
- Participate in educational opportunities.
- Pre-register on Martin Hall entry form, with the specific day and times. Minimum of six hours.

Teen Leader Responsibilities: Set up and oversee the following:

4-H Information Booth
4-H Snack Bar & Store
Maintenance of Martin Hall
Martin Hall Activities

HOURS

DAILY: 9a.m.-3p.m., 3p.m.-9p.m.

Tuesday through Saturday

Class No.

1. **Tuesday, 9a.m.-3p.m.**
2. **Tuesday, 3p.m.-9p.m.**
3. **Wednesday, 9a.m.-3p.m.**

- 4 **Wednesday, 3p.m.-9p.m.**
- 5 **Thursday, 9a.m.-3p.m.**
- 6 **Thursday, 3p.m.-9p.m.**
- 7 **Friday, 9a.m.-3p.m.**
- 8 **Friday, 3p.m.-9p.m.**
- 9 **Saturday, 9a.m.-3p.m.**
- 10 **Saturday, 3p.m.-9p.m.**

**SECTION B
SPECIAL EXHIBITS & EVENTS**

Fireman's PARADE, 4-H Club Float, please sign up at the Fair Office.

Club Exhibits will be judged as Excellent, Good, or Worthy and receive premiums. Cloverbud participants will receive participation ribbons and will not be judged. Displays must be in place by 5p.m. on Monday, will be judged at 6p.m.

Fireman's PARADE, Please sign up at the Fair Office.

Class No.

1. 4-H CLUB/INDIVIDUAL DISPLAYS – MARTIN HALL

- Attractive educational exhibits. Individual/Group Exhibit. (One premium per exhibit.)
- The display may depict or represent any club/individual project, community service, 4-H camp, recreation, citizenship or leadership. Include names of 4-H members and where people can get information about 4-H. The exhibit booth measures 4' x 4'.

The exhibit is judged on the following:

EFFECTIVE MESSAGE: (caption or title sign) Short, catchy, appropriate, well worded to cover, subject and suggest appropriate action.

DRAWS ATTENTION: An attention-getter that reinforces the main idea. Something unusual-motion, light design, and/or color.

HOLDS ATTENTION: Tells a coherent, clear-cut, one-idea message quickly. Arouses curiosity about the subject. Has systematic arrangement, easy to follow the story.

SELLS 4-H: Emphasizes promoting youth development and putting knowledge to work.

PRESENTS PLEASING APPEARANCE

USES EXPLANATORY MATERIAL

EFFECTIVELY: Material brief and easy to read. Size of charts, maps placards and letters adequate.

TELLS WHERE ASSISTANCE AND MORE INFORMATION

2. FAIR BEAUTIFICATION EXHIBIT – OUTDOOR FAIR GROUNDS

- Individual/Group Exhibit. (One premium per Club.) In place Monday, 7 p.m.
- An outdoor club/individual display designed to provide eye appealing and welcoming garden areas on the fairgrounds. Area will be judged on design, how well it is incorporated into the specific area of the fairground, and value of 4-H promotion. Displays must enhance the fair experience and provide beauty at the fairgrounds.
- **Displays must be in place by 5p.m. on Monday, will be judged at 6p.m.**

3. 4-H Great Cook Off Contest

You will receive a mystery food item from the fairgrounds and some healthy food options in our pantry to recreate a dish. When finished you will present your dish to our judges and be prepared to answer questions. May work individually or as a team. All food and utensils will be provided.

Sunday-August 6, 1 p.m., Martin Hall

SECTION C COMMUNICATIONS AND EXPRESSIVE ARTS

GENERAL INFORMATION

- This section is **intended** to be a showcase for projects that fall under the national curriculum category, Communications, and Expressive Arts.
- All work is to be completed by the individual youth exhibitor in the current 4-H program year, not a collaborative effort.
- Creative work should not contain content that would be inappropriate for the general 4-H audience. Any use of unsuitable language or story themes will not be accepted.

Class No.1. WRITING/PRINT

A. Achievement/Record Book/Officer Book – The book is a collection of items assembled to demonstrate involvement in projects and activities during the current 4-H year. Evaluators will be looking for an attractive cover and title page, a table of contents and/or the use of section dividers, and content that reflects involvement in 4-H experiences such as leadership experiences, marketing/public relations, exhibits, projects, community service, presentations, and other activities completed in the current 4-H year. All items such as ribbons, certificates, and pictures displayed in the book should be labeled to reflect what experiences they relate to. The book must contain a story that

summarizes the accomplishment and skills learned throughout the current year in 4-H. The inclusion of activities that are not 4-H related is acceptable but should be kept to a minimum, keeping the focus on 4-H work. 4-H Officer Book is NOT judged.

B. Scrap Book – The Scrap Book reflects the use of creative scrapbooking techniques to tell about events and/or activities. The theme may be 4-H or non 4-H in nature. The Scrap Book must have been completed in the current 4-H year. Exhibits will be evaluated on overall appearance and creativity and the appropriate use of scrapbooking techniques to tell a story. If the scrapbook reflects the activities of the 4-H Club, the work must be completed solely by one 4-H youth member and not be a group/club effort. Club scrapbooks may be entered in the open class category.

A. Press Releases or Editorials – Entries submitted need to demonstrate the 4-H youth member's ability to share information with the various media outlets for the purpose of informing the public about their achievements and accomplishments during the current 4-H year. If the press release was printed in the local newspaper, please include a copy of the published release, indicating the date of release and title of the publication.

D. 4-H Portfolio – Annual 4-H Member Portfolio and Annual Cloverbud Member Portfolio Annual 4-H Member Portfolio is an organized summary of a member's 4-H experience on a yearly basis. It must be submitted to the 4-H office by October 1 of each year in order to receive the yearend completion award. The Annual 4-H Member Portfolio can be submitted as a fair entry.

E. Creative Writing – Creative writing will be evaluated on content, standard punctuation and grammar, rhyme (if applicable), use of expressions, actions, dialogue and overall "tone" of the written piece. How the piece is presented and neatness and creativity of the presentation will also be considered in the evaluation. There is a limit of six one-sided pages, however, if a piece is longer, the exhibitor can enter a synopsis along with the total piece. The synopsis can be no more than the six-page limit. Recorded oral presentations of the work can also be submitted with the written work.

E1) Fiction – Writing can be presented in any form of genre such as a story, letter, poem or script for stage or screen.

E2) Non-Fiction – In this form of

creative writing the author uses self-exploratory writing that draws on personal experiences. The format could be an autobiography, personal story, letter, poem or script for stage or screen that are based on true-life experiences for the author.

Class No.

2. POSTERS AND 3-DIMENSIONAL

DISPLAYS – Educational posters/3-dimensional displays – Exhibit should be self-explanatory through the use of appropriate captions, signs or labels and should be limited to approximately 2’x4’. The exhibit will be evaluated on content, illustration, organization, clarity, visual appeal and readability. Displays demonstrating the theme “4-H Grows Here” or “Building Sustainable Communities” are encouraged. **All exhibits must include a written summary to help evaluator understand the purpose and/or outcome.**

- A. Public Presentation Posters – Posters must be accompanied by a descriptive summary so that evaluator clearly understands why/how the poster was used.
- B. Poster/Exhibit: Individual or Group – a series of posters (at least 14” x 22”) photos (8” x 10”) or three-dimensional exhibit representing any aspect of 4-H Youth Development projects and/or activities, must be limited to 2’x4’.

INCLUDES: EARN-AN-ANIMAL, BEEF INCENTIVE, HORSE POSTERS

Class No.

3. 4-H BANNERS

- Size: 2’ x 4’ minimum
- Designed to hang vertically or horizontally or to be carried horizontally
- Must be equipped with a dowel on top suitable for hanging or carrying
- Any assembly technique can be used
- Must incorporate the 4-H Clover

Class No.

4. PERFORMING ARTS – Exhibits should

illustrate the exhibitor’s involvement in performing arts. Involvement may be as a performer, technical support staff, review or observer.

- A. Prop – any object or material constructed by the exhibitor for use in a production. Examples: backdrop, scenery, puppet, mask, etc. Note: Costumes are evaluated in Textiles and Clothing classes.
- B. Script – an original sketch, scene or play written by the exhibitor.
- C. Documentation – notebook, posters or 3-dimensional exhibits about involvement in live performances.
- D. Other – any performing arts exhibit or project falling outside the categories described above.

Class No.

5. OPEN CLASS is an option for exhibits deemed by the County Educator to be worthwhile but fall outside the categories described above. The decision to bring such exhibits is left to the discretion of the Extension Educator.

SECTION D – CONSUMER & FAMILY SCIENCES

Exhibiting 4-H projects provides opportunities for youth recognition as well as learning experiences. Exhibits also provide a venue from which the public can gain a sense of the breadth and depth of 4-H project activities.

**SECTION DA
FOOD AND NUTRITION**

General Guidelines and Preparing the Entry:

- ✓ All baked entries must have been baked from scratch by the exhibitor. No ready-made refrigerated or frozen dough, pastry crust or box mixes are permitted.
- ✓ The recipe may not include alcohol (this does not include vanilla which is a standard ingredient in recipes) as one of the ingredients.
- ✓ No exhibits requiring refrigeration (cream or custard-based pies, cakes, cream cheese) are allowed.
- ✓ Our goal is to encourage the mastery of skills. Fewer ingredients generally mean a simpler recipe. The more experienced 4-H member is encouraged to exhibit a more difficult recipe. Exhibitors are also encouraged to not exhibit in the same class year after year. Again, this is to demonstrate mastering of new skills.
- ✓ Please do your best to demonstrate good nutritional choices in your recipe.
- ✓ Remove all items from baking pans (except pies) and exhibit on paper plates or foil-wrapped cardboard. The exhibit must be covered with plastic resealable baggies – no plastic wrap. Do not bake muffins or cupcakes in paper liners.
- ✓ **Include recipe card (product name, ingredients, preparation steps, yield, recipe source) with all baked entries. Indicate how the recipe was modified to make it healthier.**
- ✓ An exhibit is: 3 samples of small items (cookies, muffins, cupcakes, rolls, breadsticks, pretzels or similar products); ½ of large item (loaf bread, cake, coffee cake or similar products); or whole item if needed to

convey appearance of product (pie, turtle-shaped bread or similar products).

- ✓ A recipe can be only entered in one class in the Food and Nutrition section.
- ✓ Complete exhibitor entry card for each exhibit entered, indicating new skills mastered and nutritional choices made.

COOKIES

Class No.

- 1) Cookies. No frosting or added decorations that are not part of the recipe.
 - a) drop cookies: ex. Chocolate chip, applesauce, oatmeal, etc.
 - b) hand shaped: ex: peanut butter, snickerdoodles, crinkles. Can be rolled in sugar if part of the recipe.
 - c) Bar cookies: ex. Date bar, pumpkin bar, brownies, layered fruit bars or other batter cookies.

MUFFINS, BISCUITS & BREAD (NO YEAST)

Class No.

2. **MUFFINS** plain, whole wheat, cornbread, bran, apple, or other. No toppings.

Class No.

3. **BISCUITS OR SCONES.** Plain, whole grain, flavored, or other shaped (rolled & cut) biscuits or scones. No toppings.

Class No.

4. **LOAF BREAD** (not yeast leavened). Banana, blueberry, apple, pumpkin, or other bread baked in a loaf pan. No toppings.

YEAST BREADS

Class No.

5. **YEAST ROLLS.** Plain, whole grain, flavored, or other yeast rolls of any shape; does not include fancy rolls with fillings or frosting.

Class No.

6. **YEAST BREAD.** Plain, whole grain, flavored, or other, baked in a loaf pan.

Class No.

7. **SHAPED BREAD.** An exhibit is any small (such as pretzels or breadsticks), or large (such as animal shaped) hand-shaped bread. Plain, whole grain, flavored, or others; does not include fancy yeast bread with fillings or frosting.

CAKES

Class No.

1. **Cakes.** An exhibit will consist of one-half of the following:
 - a) plain cake (spice, chocolate, butter) baked in a pan approximately 8-9 (round or square).
 - b) A foam-type cake (angel food, sponge, chiffon) baked in a tube pan, approximately

9-10" Nutritious cake made with a vegetable or fruit, such as carrot, applesauce, sweet potato, etc. Baked in an appropriate size pan approximately 8-9" round or square or 9-10" tube pan.

Class No.

9. **CAKES WITH NUTRITIOUS**

INGREDIENTS – An exhibit will consist of one-half of a cake which is made with vegetable or fruit (no fruitcakes), such as carrot, applesauce, beet, sweet potato, cabbage, etc. baked in an appropriate size pan, approximately 8-9" round or square or 9-10" tube. In evaluating nutritious cake, more consideration will be given for nutritious ingredients while recognizing the cake will be heavier and moisture content will vary. Unfrosted.

Class No.

10. **CAKE DECORATING** – Frosted and decorated cake or special occasion disposable form or 3 cup cakes for a birthday, anniversary, graduation, etc. Decorations need to be made with decorator's frosting using decorator's tips. Candies, actual flowers and other decorations can only be added to enhance the frosting decorations, not used alone. Include on Entry Card what occasion the cake/cupcakes is to be used for.

PASTRY/PIES

Class No.

11. **PIES** – Fruit pies – 2-crust pastry. Top crust can be lattice or decorative pastry, no crumb toppings. Ex. Apple, blueberry, cherry, etc. Please enter in disposable pie pans 6" or larger. No exhibits requiring refrigeration (cream or custard-based pies, cream cheese, etc.) are allowed.

Class No.

12. **TARTS OR TURNOVERS** – 3 items make an exhibit. Ex. Peach tarts, apple turnovers, etc. No exhibits requiring refrigeration are allowed.

HEALTHY LIVING

Class No.

13. **HEALTHY BAKED PRODUCT-** An exhibit is any baked product that is made with less sugar, fat or salt, altered using a sugar or fat substitute or gluten free. The recipe must clearly state ingredients and methods used. An explanation of why you made it healthy, made changes to the recipe or used gluten-free ingredients must be included. Cookies, loaf bread, cake, cupcake, coffee cake, muffins, pies or other baked items.

Class No.

14. **HEALTHY SNACK** – This may be an actual food exhibit, poster, photos or may include faux

food. The idea is to prepare an example of a healthy snack that you might have yourself or may prepare for friends. Actual food exhibits must be able to be presented without the need of refrigeration. Examples of Healthy Snacks: veggie platter, smoothie, cheese and crackers, fruit kabob. Entry Card statement should include serving size and information about the nutritional value of the snack.

Class No.

15. **PACKED LUNCH** – Entry is to be presented in a lunch bag or box (always good to think about how this will be displayed). The display may include photos or pretend food if actual items will not hold up. Entry Card statement must include the following: a) Dietary needs of individual that lunch is for (aka a 3rd grader will require less food than a high school athlete); b) Facilities available for keeping lunch (aka: will this be used on a trail ride? Lunchroom: Do you need a microwave in order to prepare? Etc.) c) Nutritional value of the lunch packed (consider this when you decide what is going in the packed lunch).

Class No.

16. **MENU FOR A DAY** – The menu should include a complete listing of all meals and snacks that would be eaten over a one-day period. A description of individual or family for whom meals are intended must be included. Typed exhibit with photos is recommended, creativity is encouraged.

See **RECIPE COLLECTIONS below for more **HEALTHY LIVING** options.

OTHER BAKING CLASSES

Class No.

17. **FOOD TECHNOLOGY EXHIBIT**
NEW Exhibit to include a food product prepared using new technology or a non-traditional method (i.e. bread machine, cake baked in a convection oven, a baked item made in a microwave, etc.). Include recipe and why you used this method.

Class No.

18. **GROWN IN NEW YORK** - An exhibit is a sample of any baked product that contains a fruit, vegetable, honey or maple syrup grown in New York State and must include: (a) recipe, (b) explanation of ingredient grown in New York, including where it was grown and purchased and if it was preserved for later use, and a statement about the nutritional value of the item produced in New York. Source of ingredient can be garden, U-pick or roadside stand, farmers market, or any market if the source can be identified. Such as cookies, muffins, bread,

cake, cupcakes, coffee cake, pie or other baked items.

Class No.

19. **HERITAGE FOODS/INTERNATIONAL FOODS** – An exhibit is a sample of any baked item associated with family traditions or history/with customs and traditions of a country or population of the world and must include: (a) recipe and (b) family history/traditions or historical background/context associated with the food and (c) traditions associated with preparing, serving and eating the food. Such as cookies, muffins, bread, cake, cupcakes, coffee cake, pie or other baked items.

Class No.

20. **PET TREATS** – An exhibit will consist of 3 samples or 1 cup mix of baked treats for dogs, horses, etc. Will be evaluated on appearance, smell and texture. Please include on Entry Card the reason for the treat such as for your pet, community service project, fund raiser, etc.

RECIPE COLLECTIONS

Class No.

21. **HEALTHY RECIPE COLLECTION** - An exhibit is at least 6 recipes (displayed in a box, notebook, or file folder; can include photos or illustrations) that provide needed nutrients while limiting fat and total calories. For each recipe state: (1) relationship of key ingredients to MyPlate.gov; (2) nutritional benefit; (3) source of recipe; (4) how well it was liked; (5) any changes you would make in the recipe. All recipes must be collected and made during the current enrollment year.

Class No.

22. **HERITAGE RECIPE COLLECTION** - An exhibit is at least 10 recipes (displayed in box, notebook, or file folder; can include photos or illustrations) that depicts family or local history. For each recipe state: (1) source of recipe; (2) history related to recipe; (3) traditions related to preparing, serving, and eating the food. For 4 of the 10 recipes, indicate how well it was liked after making it. The collection should represent one or more generations older than you and can be collected from family, friends, or other community sources. All recipes must be collected and at least 4 of the 10 prepared during the current enrollment year.

PRESERVED FOODS

Any processed food, including dried, foods and maple syrup will be evaluated based on appearance and process used. Because of food safety concerns, the

entry will not be tasted or opened.

Class No.

23. CANNED FOODS

Criteria for Exhibiting Home Canned Foods

- ✓ **Remember: use only the United States Department of Agriculture (USDA) tested and approved recipes.** The USDA has researched, tested and approved recipes for home canning. In order to obtain a safe, quality product use only up-to-date (1994 or later) USDA approved recipes. Approved recipe sources include:

- National Center for Home Food Preservation at <http://www.uga.edu/nchfp/>
- So Easy to Preserve, University of Georgia
- Your local Cornell Cooperative Extension Office
- Ball Blue Book

- ✓ **Canned exhibit consists of one clear-glass Standard Mason jar processed with a self-sealing, two-piece lid.** (metal lid and metal ring). Rings should have been removed after processing and cooling in order to clean and store the canned good. Rings should be put back on for transport to fair, but removed by the exhibitor before judging.

- ✓ **Top of jars must be labeled with the product and date processed.** Do not put labels on the sides of the jars (this makes it difficult for judges to view the product).
- ✓ Attach a separate card securely to the exhibit and include:
 - Recipe
 - Recipe Source (Site Ball Blue Book or other USDA source – not a family member)

The card should include the following information if not already included in the recipe:

- Contents
- Type of pack (hot or raw)
- Type of processing (boiling water bath or pressure canner)
- Processing time
- Altitude adjustment if required
- Headspace
- Date of processing

- ✓ Appropriate head space requirements must be followed. In general – Fruit Juices ¼ inch; Vegetables ½ inch; Jams and Jellies 1/8 – ¼ inch; Pickles ½ inch; Tomatoes ½ inch or according to USDA approved recipes.
- ✓ Jars must be free of cracks, chips, etc.

- ✓ Each exhibit must be vacuum sealed.
- ✓ The following entries will be disqualified:
 - Foods processed and packages not following current (1994 and later) USDA recommendations
 - Paraffin sealed jams and jellies
 - Jars with zinc lids
 - Foods in green jars or non-standardized jars
 - Jars with more than 2” headspace
 - Jars with added color, bleach, sulfite or other preservatives, unless called for in a USDA approved recipe. (For example, baking soda may not be added to green vegetables)
 - Jars or food that were made and processed over one year ago.

Class No.

- 23A Canned Fruit
- 23B Vegetable
- 23C Tomatoes
- 23D Juice
- 23E Pickles, Relish
- 23F Jam, Jelly, Marmalade
- 23G Other

Class No.

24. DRIED/DEHYDRATED FOODS

Criteria for Exhibiting Home Dried/Dehydrated Foods

- ✓ Dried foods must be displayed in either clear one-half pint zip closure bags or glass jars with tight-fitting lids.
- ✓ Foods in unapproved containers or more than one-year-old will be disqualified.
- ✓ Top of jars must be labeled with the product and date processed. Do not put labels on the sides of the jars (this makes it difficult for judges to view the product).
- ✓ Attach a separate card securely to the exhibit and include:
 - Method of drying (Dehydrator, oven)
 - Time and Temperature of drying
 - Pre-treatment method (if used)

Class No.

- 24A Dried Vegetables
- 24B Dried Fruit
- 24C Leathers
- 24D Herbs

Class No.

- 25. **MAPLE SYRUP** – An exhibit will consist of homemade maple syrup in a clear glass bottle appropriate for syrup products. Entry Card should include the process used to make the syrup and the resource(s) of their information.

Class No.

26. **OPEN CLASS** is an option for exhibits deemed to be worthwhile but fall outside the categories described above. The decision to bring such exhibits is left to the discretion of the Extension 4-H educator. A recipe and a written description of the process used for creating the item must be included.

**SECTION DB
FINE ARTS & FINE CRAFTS**

General Guidelines:

- Entry in Fine Arts and Craft is to be made entirely by the exhibitor, not a collaborative effort with a commercial business. This includes selection of materials and entire construction process. Ex. Ceramics should not be from pre-made molds that are just painted. Exhibits meeting that criteria should be entered in the Hobby Craft Section.
- Entries limited to one of a kind items designed by the exhibitor.
- Hobby Crafts and Crafts made from commercially available kits/patterns should be exhibited in Home Environment.
- Art Objects must be in good condition, ready for display.
- Small, delicate, fragile items should be displayed securely in a display box.
- Objects whose ultimate use is to hang on the wall must have mountings on them and be ready for hanging.
- Fine arts and crafts entries made using recycled materials will be evaluated on entry's artistic value. Note: items made from recycled materials may be evaluated in Environmental Education Section G – Class No. 6 if youth would benefit more from its evaluation being based on the re-use of material. Please include where the recycled materials came from on Entry Card.

FINE ARTS**Class No.****1. PAINTINGS, DRAWINGS,**

GRAPHICS/PRINTS - Artwork is to be visibly signed, matted and framed. Backgrounds should be filled in lightly on all artwork.

- A. **DRAWING** – Expressive work in pencil, charcoal, felt tip pen, crayon, pastel, brush or ink.
- B. **PAINTING** – Expressive work in oil, watercolor, acrylics or mixed media, i.e., watercolor and ink, acrylic and chalk, acrylic and collage, etc.
 - 1) Traditional: stretched canvas, wood, glass, barn quilt
 - 2) Non-traditional: bark, fungus, rocks, saws, gourds
- C. **GRAPHICS/PRINTS** – Any printing process that duplicates one or more identical images.

Minimum of 2 images in the exhibit. Include if possible the stamp or photo of the graphic ex potato or apple.

- D. **SCULPTURE** – Materials may be wood, stone, clay, original cast plaster, paper-mache, metal (sheet or wire), fibers, fabric or fiber glass, or a combination of these. Processes may be carved, modeled, fired, soldered, glued, molded, laminated, nailed or sewn.

FINE CRAFTS**Class No.**

2. **CRAFTSMANSHIP** - An exhibit shall consist of one of the following:

- A. **POTTERY** – Vessels of clay, glazed or unglazed, hand built, wheel thrown, cast from an original mold. No pre-forms permitted.
- B. **FIBER, FABRIC** – Original design objects of 2 or 3 dimensions of fibers and/or fabrics used singly or in combination, employing any of the following techniques: weaving; knotting; needle arts; string art; felting, etc. *Entries are self-designed needle art. Commercial patterns entered in Hobby Crafts Section DC.
- C. **LEATHER** – Using no pattern and no kits. Objects can be tooled, carved, molded, stamped, laced, stitched and/or riveted. Sealant should be applied.
- D. **GLASSWORK** – Self-created entries made by exhibitor, including all steps of the process, not from a commercial source
 - 1) Etched, sandblasted, blown or pulled, annealing/tempering/slumped/fired.
 - 2) Stained glass – no painted glass or liquid lead.
- E. **METAL** – Objects of metal(s) used singly or in combination with other materials such as other metals, plastics, wood, ground stones, bone, and enamel. Objects can be made by the following processes: hand cut, etched; engraved; tooled or molded. No entries with tin cans permitted.
- F. **MOSAICS** – Two- or three-dimensional objects using clay tile, glass, stone. Projects should be grouted and sealed. No stepping stones to be entered.
- G. **WOOD AND/OR PAPER** – Processes: carving; wood burning, gluing; inlay; cutting; tearing; layering; (origami) folding, quilling.
- H. **JEWELRY/PRECIOUS METALS** - May include designs from pattern books, bead loom, crochet, etc. **NO KITS, NO PONY BEADS.**
 - 1) Handmade materials: silverworks, glass blowing, clay formation, paper formation,

stone, fossils, enameling, etc.

2) Purchased materials:

a) **FIRST YEAR IN JEWELRY CLASS**

ONLY - jewelry made with purchased materials simply strung. Will evaluate on bead and color selection and pattern used to string beads.

b) Pattern (a commercial pattern or a hand-drawn design) must be provided with exhibit. **NO SIMPLE STRING OF BEADS.**

I. **CERAMICS**-Any form cast from a commercial mold or pre-form. Cleaned and painted/stained/glazed. Proper sealant if not glazed.

HERITAGE ART, CRAFTS AND DOCUMENTATION

- ✓ Include the following on or with the completed Entry Card:
 - a. Source of traditional design (specific ethnic group or family)
 - b. Design plan/chart.
 - c. Appropriate heritage documentation for the exhibit. Include historical time period of entry (ex. Basket should include the history of baskets and purpose of design; leather entries include what tribes of Native Americans).Emphasis in the heritage art, crafts and documentation is on personal growth and knowledge through learning about cultural heritage. It is based on the research of traditional designs, methods, and materials as well as learning the necessary skills.
- ✓ Objects should be constructed in traditional design methods and materials but if not state what the traditional design methods and materials would be and what you had to replace them with to complete the project.
- ✓ No Soap Entries: No soap entries of any kind will be accepted.

Class No.

3. **HERITAGE ART EXHIBIT** – shall consist of one of the following:

- A. **HERITAGE ART AND CRAFTS** – Traditional objects using materials, methods and/or decoration based on a continuation of ethnic art or handed down from one generation to another. Example, basket, rug making, embroidery, quilting, Native American crafts, scherenschnitte, etc.
- B. **PROCESSED NATURAL FIBERS** – Natural fibers processed for use.
- C. **HERITAGE DOCUMENTATION** – Genealogy of family or community history, (buildings, village names) or methods of processing. (Native American crafts, basketry, soap making). Photos of

generations can supplement written documentation. Cite references.

Class No.

1. **OPEN CLASS** is an option for exhibits deemed by the County to be worthwhile but fall outside the categories described above. The decision to bring such exhibits is left to the discretion of the Extension 4-H educator.

SECTION DC HOBBY CRAFTS AND HOME ENVIRONMENT

General Guidelines:

- ✓ These exhibits can be hobby crafts and/or can be made from commercial kits. Original designed items can be entered in Section DB Fine Arts & Crafts.
- ✓ Objects whose ultimate use is to hang on the wall must have mountings on them and be ready for hanging.
- ✓ Items entered in this section should include on the Entry Card the following information:
 - a. Where and for what will the item be used
 - b. What is the color scheme of the room
 - c. Include fabric content and care information if available. Required for Class #2, 3 and 4.
 - d. Where did you get your ideas from (name of 4-H Project or resource)?

HOBBY CRAFTS

Class No.

1. **CRAFTS**-Exhibits are based on projects that focus on a particular topic area and specific learning goals over a period of time. An Exhibit can be made from a commercial kit or pattern. This gives a youth the chance to explore new crafts area.

If an exhibit takes a short time, multiple items may be exhibited and displayed nicely to create one exhibit.

- Craft Kit-Used a commercially kit or experience to explore a new area. Give the name of the kit or experience/location on your Exhibitor Entry Statement.
 - Available kits to explore a new area.
 - Craft Non-Kit-Purchased all the supplies for this exhibit separately.
 - *New* Recycled Craft-items made, remodeled or renovated from recycled material example: picture framed covered in seashells, a sculpture made from recycled plastic bags. Please included where the recycle material came from on Exhibit Entry Statement.
- A. **FIBER, FABRIC**- Objects created from commercial patterns of 2 or 3 dimensions of

fibers and/or fabrics used singly or in combination, employing any of the following techniques; knotting, needle arts, string art, felting, etc.

- B. **LEATHER**- Using commercial patterns and kits. Objects can be tooled, carved, molded, stamped, laced, stitched and/or riveted. Sealant should be applied.
- C. **GLASSWORK**- Can be from a commercial source.
 - 1. Etched, sandblasted, blown, or pulled, annealing/tempering/slumped/fired.
 - 2. Stained glass-can be painted glass or liquid lead.
- D. **METAL**- Objects of metal(s) used singly or in combination with other materials such as other metals, plastics, wood, ground stones, bone, enamel. Objects can be made by the following process: hand cut, etched, engraved, tooled or molded. No entries with tin cans permitted.
- E. **MOSAICS** - Two or three-dimensional objects using clay, tile, glass, stone. Projects should be grouted and sealed. Stepping stones can be entered.
- F. **WOOD AND/OR PAPER** - Processes from commercial patterns and kits: carving, wood burning, gluing, inlay, cutting, tearing, layering, (origami) folding, quilling, basket making.
- G. **OTHER** – For exhibits deemed by the County to be worthwhile but fall outside the categories described above.

FABRIC FURNISHINGS and HOME ACCESSORIES

Class No.

- 1. **ROOM ACCESSORIES/EMBELLISHED FURNISHING** – such as bulletin board, fabric décor, lampshade, picture frame (may be non-sewn items). Includes items such as placemats and lampshades that have been changed by adding fabric, painted design or other embellishments.

Class No.

- 2. **FABRIC ACCESSORY** such as a pillow, throw blanket, wall hanging, placemats, macramé and needlework items including knitting, crocheting, embroidery, cross-stitch, latch hook, etc. Include fabric content and care information.

Class No.

- 3. **MAJOR FURNISHING ITEMS MADE OF FABRIC** - quilt, bedspread, coverlet, curtains, etc. Include fabric content and care information.

Class No.

- 4. **A GROUP OR CLUB PROJECT** - Group or Club Project such as a quilt, wall hanging, etc. (Club Banners see Communications and Expressive Arts classes.) Include fabric content and care information.

Class No.

- 5. **HOME STORAGE** – laundry bag, shoe bag, locker caddies, travel storage, etc.

Class No.

- 6. **TABLE SETTING EXHIBIT** – An entry should include table setting for at least one person, menu, a short story about the specific occasion the setting is for, table cloth, place mats, napkins (may be artfully displayed/folded), centerpiece or table decoration as appropriate to complete the table setting. Exhibits should be displayed on a small table such as a card table (provided by exhibitor). The exhibit is to remain in place during the full-time period.

WOODEN FURNITURE & FURNITURE ACCESSORIES

Class No.

- 7. **FURNITURE OR WOODEN ACCESSORY ITEM WITH A PAINTED/NATURAL FINISH** such as chair, table, shelf, picture frame etc. that is new and/or unfinished, refinished or constructed by exhibitor. Emphasis in this class is the restoration and not the actual construction of the exhibit. Newly constructed items can be entered in Science, Engineering & Technology – Section J if exhibitor wants woodworking skills evaluated.

Class No.

- 8. **CHAIR OR STOOL WITH NEW SEATING.** Frame may be new, unfinished, restored, refinished by exhibitor. May have a painted or natural finish. Seat may be upholstered, caned, etc. Note: exhibit is just for seat evaluation only.

Class No.

- 9. **CREATIVE FRAMING** (moved from E,Photo)
Criteria for exhibiting in Creative Framing Class:

- One Exhibit per Exhibitor.
- Exhibitor is expected to draw on their artistic sensibilities to enhance an existing image via the creative framing process.
- Entry will include both photo and frame and item will be evaluated together. Photo is not to be entered in any other class.
- Exhibitors should use their imagination such that Creative Framing serves to create a **visual** image that is more powerful than the sum of all its parts.
- Creative Framing Possibilities:
 - o Create your own physical frame using materials discovered in the environment (i.e., leaves, sticks, pinecones).

- Sandwich your photo between two pieces of commercially framed glass, then carefully add your own rendering to the piece.
- See the physical frame as a three-dimensional space that uses depth in ways that stimulate viewer attention.
- Decorating or adding to a commercial frame is acceptable, as long as the exhibitor has “made it his own” by modification.

10. **OPEN CLASS** is an option for exhibits deemed by the County to be worthwhile but fall outside the categories described above. The decision to bring such exhibits is left to the discretion of the Extension 4-H educator.

SECTION DD WEARABLE ART
--

For all classes in Wearable Art in addition to the completed Entry Card, include the following:

- a. Name or source of the pattern if applicable
- b. the fiber content of item when available
- c. care label information; and
- d. where did you get your ideas from (name of 4-H Project?)

✓ Projects selected to come to County Fair should be age and experience appropriate.

No fabric paints or scribbles accepted in this section.

Class No.

1. **CROCHET/KNITTED FIBER CLOTHING** – Clothing made using a form of crocheting or knitting such as a sweater, vest, scarf, etc.

Class No.

2. **TIE-DYING/BATIK MATERIAL CLOTHING** – Clothing made using tie-dyeing which utilizes knotting and folding techniques or batik which utilizes the immersion or outline fill-in techniques of wax resist to make such clothing as a tee-shirt, pants, etc. Purchased clothing can be used to do either of these techniques on.

Class No.

3. **NON-TRADITIONAL MATERIAL CLOTHING** – Clothing made using paper, duct tape, paper clips, bubble wrap, etc.

Class No.

4. **OPEN CLASS** is an option for exhibits deemed to be worthwhile but fall outside the categories described above. The decision to bring such exhibits is left to the discretion of the Extension 4-H educator.

SECTION DE TEXTILES AND CLOTHING

General Guidelines:

- ✓ For **all** classes in Textile and Clothing in addition to the completed exhibitor entry card, include the following:
 - a. name or source of the pattern (it is recommended to include pattern envelope and/or directions, if possible.)
 - b. the fiber content of item when available
 - c. care label information; and
 - d. if a kit is used for down or fiberfill items or outdoor equipment (i.e., parka, hood, booties, sleeping bag, tent) this must be stated.
 - e. Where did you get your ideas from (name of 4-H Project?)

✓ No kits are allowed for the original pattern and design class.

✓ Projects selected to come to Otsego County Fair should be age and experience appropriate.

NOTE: For clothing made using a form of textile art or non-traditional material other than sewing enter in Section DC.

WEARABLE SEWN ITEMS

Class No.

1. **CLOTHING** – any beginner, intermediate or advanced level sewn garment. Note the general guidelines for each entry. **Pieces of a coordinated outfit should be entered as one entry.**

Class No.

2. **CLOTHING ACCESSORIES, SEWN** - an item created by the exhibitor, which has a decorative and/or functional purpose such as a hat, belt, etc.

Class No.

3. **HISTORICALLY ACCURATE CLOTHING, SEWN** - clothing made using materials and construction techniques appropriate for period clothing. Exhibit does not have to use the exact fabric or technique but there should be evidence of effort.

Class No.

4. **COSTUMES** made using materials and construction techniques appropriate for the costume design and use. For example if the costume is to be worn only once in a school play, the “look” of it from a distance will be more important than neat sewing.

RECYCLED SEWN ITEMS

Class No.

5. **RECYCLED GARMENTS OR NON-CLOTHING, SEWN** – including remodeled or renovated garments OR remodeled or renovated

items that are not clothing, like jeans turned into grocery/all-purpose bags, t-shirts turned into a purse, towels turned into a dog toy, etc.

NON-CLOTHING, SEWN

Class No.

6. **NON-CLOTHING, SEWN** – examples include purses, tote bags, backpacks, outdoor equipment, horse articles such as saddle pad, cooling sheet, recreational items such as kites or toys. For reference see the 4-H Curriculum *Simple Gifts and The Flight/Fabric Connection*.

Class No.

7. **WEARABLE OR NON-WEARABLE ITEMS DESIGNED AND CONSTRUCTED BY EXHIBITOR** designs may be made by hand, by computer or combinations/design alterations of purchased patterns. Include pattern and description.

PURCHASED GARMENT

Class No.

8. **PURCHASED GARMENT** - entries in this class should reflect wise consumer decision-making. Garment or outfit must be accompanied by an 8 ½” x 11” information notebook. The notebook must include the following (1) color photo of entrant wearing garment or outfit – label photo with name, county and color of complexion, hair and eyes; (2) cost of garment – include price tags or information, itemized comparison of cost to make garment – consider cost of fabric, notions, pattern, labor, etc. (3) story that describes: a) why garment was purchased; b) how it fits into wardrobe; c) fabric structure, fiber content and care; d) simple accessories selected; and e) activities for which garment will be worn. For reference see the 4-H Curriculum *Clothing Decisions*.

Class No.

9. **OPEN CLASS** is an option for exhibits deemed to be worthwhile but fall outside the categories described above. The decision to bring such exhibits is left to the discretion of the Extension 4-H educator

**SECTION DF
CHILD DEVELOPMENT/CARE**

✓ An exhibit shall consist of one of the following:

Class No.

1. **CREATIVE TOY, GAME OR STORYBOOK** – A homemade toy, book, game or activity to be used with children. Entry card statement should include the age of child intended to use article, developmental stage the item is suited for and why this would be an appropriate play item.

Class No.

2. **“BABY-SITTER’S KIT”** including games, toys and safety materials needed while caring for a baby, toddler or preschooler. Include explanation of planned use of articles in kit.

Class No.

3. **OPEN CLASS** is an option for exhibits deemed by the County to be worthwhile but fall outside the categories described above. The decision to bring such exhibits is left to the discretion of the Extension 4-H educator.

**SECTION E
PHOTOGRAPHY & MULTIMEDIA
DESIGN**

• **IMPORTANT - TWO** exhibits per class/per exhibitor with no more than THREE exhibits per exhibitor overall in Photography & Multimedia Design Section. Youth must select the Photography level that is appropriate to their experience and with the approval of their county educator. Youth may not enter multiple levels in a single year.

• Photography & Multimedia Design exhibits must have been created by the exhibitor as part of a 4-H program or project during the current year and should reflect a meaningful, thoughtful process. It is strongly recommended that youth consult instructional materials for guidance during their project. Options include: National 4-H Council-Approved Photography Curriculum (<https://shop4-h.org/products/2019-photography-set-of-3>) as well as others. Include links or listing in the project description.

• **LEVELS**

• Selecting Your Levels: Youth who have never taken a photography project in 4-H should start in Level I. Youth who have been working on photography for several years should work with educators to select the appropriate level.

• Moving up Levels: Youth who receive a white or red ribbon in their class should remain in that same level the following year. Youth who receive their first blue ribbon in a level *may*

(but are not required) to advance to the next level in the following year.

Once a youth has received **two** blue ribbons in a level, they *must* advance to the next level.

- CAMERA TYPES & DATA TAGS: Youth are permitted to shoot on film, digital and/or cell phone cameras. The type of camera used must be included in project documentation. Youth may use automatic settings but should be able to find the metadata information on the photo to include in project documentation.
- Exhibit must have additional information (Data Tag) attached to the back of the photo/print. For cell phone photography, downloadable Aps for Data Tags are available.
- ANDROID:
<https://play.google.com/store/apps/details?id=net.xnano.android.photofixeditor>
- APPLE:
<https://apps.apple.com/us/app/exif-viewer-lite-by-fluntro/id979066584>
 - Data Tags include the following information:
 - Camera/device used
 - Aperture (F-stop)
 - Exposure time (shutter speed)
 - ISO (film/sensor sensitivity)
 - Lighting used (flash, artificial, sunlight, other)
 - Photo editing software/application used (required for ALL edits and retouches except for cropping)
 - Filters used (lens filters and or digital/software filters)
- MOUNTING: Exhibit should be mounted on a sturdy background like mat board or foam core, not in a commercial picture frame (entries will not be accepted under glass or wrapped in plastic) and should be fitted with a device for hanging. Preparation of photo for exhibit should demonstrate good workmanship and use of materials.

- SIZE: Photos should be sized between 4" x 6" and 11" x 14".
- EDITING: Photo editing is only permitted in the classes designated. Any edited images **must** be accompanied by a thumbnail print of the original image taped to the back of the exhibit, and include an explanation of what edits were made and what software was used.
- SUPPORTING MATERIALS & ENTRY CARDS
 - Each participant may bring any extra materials they feel will demonstrate the learning experiences of the current project year but are not required to do so. Equipment to view digital images and or portfolios must be provided by the exhibitor. Be aware that Internet/Wi-Fi service will not be available at the judging site! Images should be contained on your display devices.
 - All exhibits must be accompanied by an exhibitor entry card and statement. Failure to properly size, identify, mount or enter exhibit into the proper class could result in disqualification at the discretion of the evaluators and/or the evaluation coordinator.

PHOTOGRAPHY

Class No.

1. LEVEL I – BEGINNER A

- Exhibit one matted photo which demonstrates the understanding of a technique you learned from participating in a photography project. On your submission you should identify which technique you were focusing on.
No photo editing is allowed in this class except cropping and red eye removal.
 - TECHNIQUES INCLUDE (but not limited to) SIMPLIFICATION, FILLING A FRAME, RULE OF THIRDS, FRAMING, CONTRAST, LINES AND SHAPES, SYMMETRICAL BALANCE, ASYMMETRICAL BALANCE,

DEPTH AND LAYERING,
EXPOSURE, WHITE BALANCE,
TRIANGLES, EYE LINES.

what software you used to edit your photo. Include thumbnail of your original on the back.

Class No.

2. LEVEL II – BEGINNER B

- A single 8" x 10" still-life photo that demonstrates your understanding of (3) three techniques you have learned from participating in a photography project.
No photo editing is allowed in this class except cropping and red eye removal.
 - TECHNIQUES INCLUDE (but not limited to) SIMPLIFICATION, FILLING A FRAME, RULE OF THIRDS, FRAMING, CONTRAST, LINES AND SHAPES, SYMMETRICAL BALANCE, ASYMMETRICAL BALANCE, DEPTH AND LAYERING, EXPOSURE, WHITE BALANCE, TRIANGLES, EYE LINES.

Youth must have taken Photography Level I or have educator permission to enter this class.

Class No.

3. LEVEL III – INTERMEDIATE A – PHOTO EDITING

- A single edited photo which demonstrates your understanding of a single editing technique you learned from participating in a photography project. On your submission you must identify which editing technique you were focusing on and what software you used to edit your photo. Include a thumbnail of your original on the back.

Youth must have taken Photography Levels I – II or have educator permission to enter this class.

CLASS NO.

4. LEVEL IV – INTERMEDIATE B – ADVANCED PHOTO EDITING

- A single edited photo which demonstrates your understanding of a combining no less than (2) two editing techniques you learned from participating in a photography project. On your submission you must identify which editing techniques you used and

Youth must have taken Photography Levels I – III or have educator permission to enter this class.

CLASS NO.

5. LEVEL V – ADVANCED – PHOTO STORY/COLLECTION

- A collection of at least five and not more than ten photos that have a connection, a relationship or tell a story. The photos may be edited or unedited and should demonstrate strong understanding of basic photography techniques practiced in levels I-IV. The photos should demonstrate a relationship to one another, whether they represent similar objects, have a theme or tell a story. The photos should be mounted uniformly whether on one mat or individually. Include original thumbnails on the backs if photos are edited and list the techniques you utilized/focused on in the project.

EXAMPLES:

- Select a type of photography (i.e. portrait, wedding, baby, landscape, sports, fashion, etc.) and explore the skills and equipment needed to be successful.
- Create a collection of images illustrating a "picture story" or a "documentary"
- Experiment with a variety of lighting intensities and angles and apply your new knowledge to your photography.
- Learn to see in "Black and White" and explore how removing color changes the mood, focus of attention, or even attractiveness.
- Use a specialized technique, such as selective focusing or enlarging, to change an image's focal point, feel, meaning, etc.
- Learn how to use the manual settings on your camera to your

advantage (i.e. nighttime photography).

Youth must have taken Photography Levels I – IV or have educator permission to enter this class.

CLASS NO.

6. LEVEL VI – GRADUATE – PHOTOGRAPHY PORTFOLIO

All participants in Class E-6 will be expected to bring at least (1) one print for display, mounted at your discretion, illustrating what you consider to be the best representation of your skills in photography along with a portfolio of no less than (8) eight and no more than (12) twelve photos demonstrating your mastery of basic photography techniques learned by completing levels I-V. You may choose to exhibit some edited photos and some unedited photos, and the subjects of the photos do not need to be related. On each photo you will need to identify two of strong points and one area that you would like to improve. Other than the one piece you choose to exhibit mounted, you may exhibit the rest mounted in a portfolio.

Youth must have taken Photography Levels I – V or have educator permission to enter this class.

Advance Classes & Info available from the 4-H Office in the following:

Class No.

7. PHOTOGRAPHY INNOVATION

8. VIDEO PROJECT – 4-H THEME

10. COMPUTER GRAPHIC DESIGN – 4-H THEME

11. WEBSITE

12. MULTIMEDIA DESIGN OPEN CLASS – Any multimedia (video, web, computer based design) exhibit deemed by the 4-H Educator to be worthwhile that falls outside categories described above, example: PowerPoint Presentations.

SECTION F – HORTICULTURE

GENERAL INFORMATION FOR HORTICULTURE EXHIBITS

- Exhibitor must fully complete at least one green Entry Card including questions for at least one project in each division.
- If entering more than one exhibit in a division, you must complete a green Entry Card. You may exhibit one entry per class except where noted.
- Participants are encouraged to work together as groups to create exhibits.**
- Individual exhibits are also acceptable.
- Evaluators will consider number of participants so that group projects will be evaluated appropriately.
- Age, experience and standards listed in related 4-H publications, as well as content and quality, will be considered in evaluating criteria.
- Project resource materials listed are for suggestions only. Use your imagination for other ideas. For more information and ideas, check the website: <http://www.hort.cornell.edu/4hplants>.
- Endangered species are not allowed in any exhibit.
- Under Floral Design – Classes 25, 26 and 27 may use purchased or wild flowers.

PLANT COLLECTIONS

Developing a plant collection will help youth to learn to recognize and identify different plant species.

A. Preserved

- Plants must be pressed, dry, mounted and labeled. To press plant material, it is best to use the method described in: Pressed Flower Pictures (1982), 141-IB-34, find at <http://dSPACE.library.cornell.edu/handle/1813/3267>, or as described by a person who has experience collecting plant material.
- A clear protective overlay is helpful for many, but not all exhibits.
- Weeds and other specimens mounted green (not pressed or dry) will not be evaluated.
- Collections of plants may be on one side of ONE PIECE of poster board or like material, 22 x 28 inches in size, or in notebook binders with single specimens on pages 8 1/2 x 11 inches.
- Scrapbooks of accumulating years should have dividers between years. Current year's exhibit should be clearly marked. Current year exhibit will be judged.
- List sources used to identify plants and plant materials.
- Plants Identified by Common and Scientific Name.

Class No.

1. LEAF, TWIG (and fruit, flowers and seed, if possible) **OF TEN OR MORE ORNAMENTAL TREES.**

Class No.

2. **LEAF, TWIG** (and fruit, flower and seed, if possible) **OF TEN OR MORE ORNAMENTAL SHRUBS.**

Class No.

3. **LEAF, TWIG, AND ILLUSTRATION** of fruit or nut, of ten or more fruit or nut plants.

Class No.

4. **TEN WEEDS** common to lawns and flower beds.

Class No.

5. **TEN ANNUAL FLOWERS**

Class No.

6. **TEN PERENNIAL FLOWERS**

Class No.

7. **TEN WILD FLOWERS**

Class No.

8. **TEN SEEDS** (any single plant type, e.g., 10 ornamentals, 10 fruits, etc.)

- Clean and dried (not green) Seeds must be harvested by the exhibitor.
- A picture of the plant must accompany seeds.
- List growing conditions required.

Class No.

9. **MISCELLANEOUS COLLECTION**

- Entries will be judged according to similar project criteria.

B. Horticulture Scrapbook (Collection of plant pictures)

- May be cut from magazines or garden center catalogs, illustrated by your own drawings, photographed or photocopies.
- Write in the front or back of the catalog where your images came from if you did not make them yourself (for example *Pictures are from W. Atlee Burpee 1998 seed catalog*).
- This scrapbook makes an excellent study guide for the Horticulture Contest.
- Each plant should be represented on its own 8 ½ x 11-inch page.
- Catalog will be worth more if the picture (or perhaps more than one picture) shows different stages of growth (fruit and leaf, vegetable and flower, flower and leaf).
- Fasten pictures with clear tape, paper glue or rubber cement.
- Pages must be bound in a notebook binder.
- Label with a common name and brief description. Consult *NY Horticulture Contest Guidelines* for the plants required in each class.
- Beginners must include the 15 plants specified from each group—flowers and indoor plants; ornamentals; fruits and nuts, vegetables.

- Intermediates must include the 30 plants from each group
- Advanced participants must include all 45 plants from each group.
- NY Horticulture Contest Guidelines* are available from your 4-H Cornell Cooperative Extension Educator.

C. Photo Record Book

- Photos must be taken by 4-Her.
- A minimum of 20 photos. The collection of 20 plants can be a combination of several types of plants, such as trees, shrubs, weeds, annuals, perennials, fungi, etc.
- Identify common and scientific names
- List variety, growing requirements, location of the plant, where the photo was taken and identification sources.

Class No.

10. **BEGINNER** (1-3 years)

Class No.

11. **INTERMEDIATE** (3-6 years)

Class No.

12. **ADVANCED** (5 or more years)

EXPERIMENTS

The intent of this division is to generate an interest among young people in a science-based approach to horticulture. **Guidelines and suggestions for the exhibitor working with plants:**

Both how you plan your experiment and the final description for your display should include the following sections:

- Background.** Describe why you did this experiment and why it is important to you and other people?
- The Question** (or hypothesis). What specific question does your experiment try to answer? For example: “Does watering geraniums with coffee increase their growth?”
- Methods.** Outline how you did the experiment. Be sure to include:
 - a) **Treatments.** Describe specifically what you are comparing as treatments. Remember that you should have a check treatment (what is usually done) and the ‘test’ treatment. From the above question: Check = watering with water, and treatment = watering with coffee.
 - b) **Measurements.** Describe what you are measuring (weight, height, etc.) and why. Include observations of the plants over the course of the experiment.
- Results.**
 - a) What did your measurements tell you about the treatment compared to the check? Was there a difference and if so, why do you think

so? Use tables, graphs or pictures to share what you learned.

b) What other things did you notice in your observations?

- **Conclusions.** What did you learn? What is important about your results to other people? What would you suggest to someone else, based on what you learned?

THE DISPLAY should be interesting, attractive and neat, so that people will want to stop and learn about what you did. It should:

- include actual examples of treated and untreated plants, if possible, otherwise use drawings or photographs.
- On sheets of paper, describe your study using the above 5 sections.
- Use big print so that it is easy to read from 3 feet away.
- Glue these sheets, along with any photos or graphs to heavy poster paper (14" x 22" minimum) for display.
"Strawberry Yields Forever"
<http://www.gardening.cornell.edu/education/youth/activities/pdfs/strawberryyields.pdf>
4-H Fact Sheets are available from your 4-H Extension Educator.

Class No.

13. PROPAGATION

Class No.

14. BREEDING

Class No.

15. SOIL SCIENCE

Class No.

16. CULTURAL PRACTICES

Class No.

17. MISCELLANEOUS

- Entries will be judged according to similar project criteria.

GARDEN ENTRIES

This division offers an opportunity to display a garden item and gives participants an occasion to show the products of their gardening efforts.

- Exhibits that require it, must be grown by the exhibitors in their **individual, family, school or community gardens**, unless otherwise noted.
- Individual may display 5 entries in any one class, except where the number of entries is stated differently. Each exhibit must be of a distinctly different variety type.
- Exhibits and awards will be evaluated based on standards below.
- Exhibit must be labeled with correct common name and variety name (i.e., snap beans, Blue

Lake; or petunia, Red Picotee). **Otherwise, awards will be downgraded.**

- For further information on preparing and exhibiting vegetables go to <http://www.hort.cornell.edu/gbl/pubs/index.html>

- **Excellent** - clean; only very minor defects in general appearance; best market size and quality; true to varietal characteristics. For exhibits with more than one specimen: not more than 10 percent variation in sizes for fruits and vegetables and cut flowers; only slightly detectable variation, uniform in shape, color and degree of maturity.

- **Good** - clean; slight defects in general appearance; defective and unusable parts should not exceed 5 percent; good market size and quality. Exhibits with more than one specimen: not more than 25 percent variation in sizes for fruits and vegetables, and cut flowers; only slightly detectable variation in shape, color and degree of maturity.

- **Worthy** - fairly clean; some defects in general appearance; defective and unusable parts should not exceed 10 percent; fair market size and quality. Exhibits with more than one specimen—not more than 100 percent variation in sizes for fruits and vegetables and cut flowers; noticeable variation in shape, color or degree of maturity.

- **No Award** - dirty, serious damage apparent; defective and unusable parts exceed 10 percent; unsatisfactory market size or quality. Exhibits with more than one specimen — more than 100 percent variation in sizes for fruits and vegetables; extreme differences in shape, color or degree of maturity.

Class No.

18. VEGETABLES –

UP TO 8 DIFFERENT ENTRIES MAY BE EXHIBITED IN THIS CLASS.

- Beans, lima, 5 green pods, edible beans
- Beans, snap, green, 5 pods
- Beans, snap, yellow, 5 pods
- Beans, snap, pole or vining type, 5 pods
- Beans, green shell, 5 pods, any variety including edible soy, Horticultural, Kentucky Wonder
- Beans, dry shelled, 1/2 cup in container, dry field bean variety including mung, adzuki, fava
- Beets, 3, tops trimmed to 1 inch, no green shoulders
- Broccoli, 1 head or bunch of small heads, 5 inches or more in diameter
- Brussels Sprouts, 1-pint basket
- Cabbage, 1 head, 2 to 4 pounds, with 3 to 4 wrapper leaves, any fresh market variety.
- Carrots, 3, tops trimmed to 1 inch, no green shoulders
- Cauliflower, 1 head, leaves cut just above head
- Celery, 1 plant, market quality, roots off
- Chard, 1 plant, roots and damaged leaves off
- Chinese Cabbage, 1 head
- Chinese Cabbage, loose leaf, roots off, 1 plant

- Corn, Sweet, 3 ears, husks removed completely, shank trimmed to 1/2 inch, display in transparent bag
- Cucumbers, 2 slicing types, 5 inches or longer, 2 inches or less in diameter
- Cucumbers, 3 pickling type, 3 to 5 inches
- Cucumbers, 3 pickling type, less than 3 inches
- Dill, bunch of 3 seed heads, tied or in transparent bag
- Eggplant, 1 large oval and oblong types such as Black Beauty, Black Magic, Black Enorma, Dusky
- Eggplant, 2 small, slender and round types such as Easter Egg, Ichiban, Long Tom, White Beauty
- Endive, 1 plant, roots off, good market size
- Garlic, 3 bulbs, dried, braided together or tops trimmed to 1 inch, cleaned, not peeled
- Herbs, any kind, plant in a pot or tied bunch
- Herbs, dried – show a minimum of 1 tablespoon. Exhibiting a larger amount is acceptable. Herbs must be appropriately prepared for use.
- Kale, 1 plant, roots off
- Kohlrabi, 2, tops and tap root trimmed to 2 inches
- Leek, 3 large, trimmed
- Lettuce, leaf, 1 plant, roots off, good market size
- Lettuce, head, 1 plant, roots off, good market size
- Muskmelon and honey dew melon, 1 good market quality
- Mustard, 1 plant, roots off
- Okra, 4, 1 1/2 to 3 inches' long
- Onions, bulbs, 3 tops trimmed to 1/2 inch, well cured and dried, not peeled
- Onions, 4, green bunching type, tops on but trimmed evenly
- Parsley, 1 plant, roots off, good market size and quality
- Parsnips, 3 tops trimmed to 1 inch
- Peas, 5 pods
- Peppers, 2, large types such as Bell, Cubanelle, Italian Sweet
- Peppers, 3, small types such as Banana, Hungarian Wax, Cherry, Jalapeno
- Potatoes, 3 tubers, 5 to 10 ounces
- Potatoes, 1-pint basket, salt potato types, 3/4 to 1 1/4 inch diameter
- Pumpkin, 1, ripe, any variety
- Radishes, 4, tops trimmed to 1/2 inch
- Rhubarb, 4 stalks, tops trimmed
- Rutabaga, 1, tops trimmed off
- Shallot, 3, tops trimmed to 1/4 inch, dried, not peeled
- Spinach, common, 1/2 pound in a transparent bag
- Spinach, New Zealand, 1/2 pound, bunch or tender tips 3 to 6 inches, tied or in a transparent bag
- Squash, summer, 2, young, skin tender, such as zucchini, yellow, scallop
- Squash, winter, 1, any large types such as Hubbard, Delicious, Banana
- Squash, winter, 2, any small types such as Buttercup, Butternut, Spaghetti, Table Queen, Golden Nugget
- Squash, 1, soft and round stem, such as Big Max, Big Moon, Mammoth
- Sweet potatoes, 3 roots, any variety
- Tomatoes, 2, ripe, stems off, medium and large fruited varieties including Roma types
- Tomatoes, cherry ripe, 1/2 pint basket, stems off, also Presto and small fruited types
- Turnips, 2, tops trimmed to 1 inch
- Watermelon, 1 mature, market size

- A collection of 3 related types, such as 3 varieties of pepper, or 3 vegetables that appear in an ethnic cuisine
- Miniature Vegetables, 6 of one type, harvested at small or baby stage
- Ornamental Vegetables, 3, such as miniature pumpkins, gourds, decorative corn; ornamental kale (1 specimen)
- Heirloom Vegetables, any variety from the Heirloom Garden bulletin, exhibited in the same manner as other vegetable classes
- Miscellaneous, any other vegetable not listed, display the same number of specimens as similar crop listed

Class No.

19. VEGETABLE ART

- Vegetable character
- Sculpture
- Geometric design
- Neatness of assembly
- Number of Horticulture products used
- Imaginative use of plants and plant materials
- May purchase vegetables
- Overall appearance

Class No.

20. CUT FLOWERS –

UP TO 8 DIFFERENT ENTRIES MAY BE EXHIBITED IN THIS CLASS

Consist of 3 stems with the same color blooms except as noted:

- Gladiolus - ONE spike with at least 12-inch stem & other large spikes
- Roses - ONE stem of the type entered.
- Dahlias - THREE blooms of one color, or ONE bloom if over 6 inches.
- Any bloom 6" or larger – show ONE specimen, such as a 6"+ sunflower or dinner plate dahlia.
- Stems should be eight inches long, except where type of flower makes this impossible.
- Flowers that do not last as cut flowers (daylilies, hollyhocks, impatiens, portulaca, etc.) may not be entered.
- Blooms of weeds, wild flowers and shrubs will not be evaluated. If you would like to show a weed (or wildflower) you should enter it as a "Methods" project (Class 31, Example: How to grow wild geranium for cut flower) or as an "Experiment" (Class 13, 14, 15 or 16) where you might evaluate a weed for use as a cut flower.
- You may provide your own disposable container. You may find further information on preparing and exhibiting cut flowers at <http://counties.cce.cornell.edu/oneida/4h/cutflowersfairbook.pdf>
- Aster (annual)
- Bachelor Button
- Calla Lily – 3 stems
- Calendula

- Chrysanthemum (any form)
- Cleome
- Cosmo
- Dahlia – 6” blossom, 1 stem; less than 6” blossoms, 3 stems
- Flowering Tobacco
- Gladiolus
- Larkspur
- Marigold
- Delphinium
- Asiatic Lily (one stem)
- Nasturtium
- Ornamental Grass (foliage and fully developed seed head)
- Phlox-annual
- Rose
- Petunia
- Rudbeckia (Coneflowers, Black-eyed Susan)
- Snapdragon
- Statice (fresh, not dried)
- Stock
- Strawflower (fresh, not dried)
- Sunflowers
- Sweet Peas
- Zinnia
- Zinnia, large, over 4”
- Daisies
- Pansies
- Viola
- Carnation
- Miscellaneous, any other cut flower not listed, annual or perennial, display the same number of specimens as similar crop listed.

A collection of 6 (six) garden cut flowers, not used in other cut flower entries. One (1) specimen of each variety. Flowers named and variety listed. No wildflowers, weeds or shrubs.

Class No.

21. INDOOR GARDENING

- Please list plants and plant materials used.
- All items should follow recommended guides of balance, design, proportion, and harmony.
- No artificial or plastic plant materials allowed.
- Ribbon and bows as part of the design are allowed.
- Entries must be grown in display container prior to June 1 of the current year
- Dish garden
- Terrarium or closed eco system – no endangered species allowed.

Class No.

22. INDOOR GARDENING: HOUSE PLANTS

- Houseplants must be a single stem or crown in proportional container.
- No artificial or plastic plant materials allowed.
- Please list the plant name.
- Entries must be grown in display container prior to June 1 of the current year.

- Potted house plant - flowering
- Potted houseplant - foliage
- Potted house plant - vine
- Potted houseplant - hanging container. More than 1 plant accepted.
- Miniature houseplant - 2 1/4"-3" pot maximum. Example, miniature African Violet

Class No.

23. CONTAINER GARDENS

- No artificial or plastic plant materials allowed.
- Appropriate container and plant combinations.
- Please list plants included in the container.
- Entries must be grown in display container prior to June 1 of the current year.
- Clubs may enter an exhibit
- For container gardens not applicable to Division 4, Class 30 (Horticultural Methods Container Gardening).
- Perennial annual, vegetable, ornamentals.
- 4-H Geraniums!

Class No.

24. FRUITS AND NUTS

- All fruits and nuts must be cared for by exhibitors.
- Nuts grown in the previous year may be entered.
- For more information on culture, consult: "Strawberry Yields Forever" - a day neutral strawberry 4-H project, available at <http://www.gardening.cornell.edu/education/youth/activities/pdfs/strawberryyields.pdf> Other publications at this website may be useful.
- Apples, 3, ripe, any single variety
- Apricots, 3, ripe
- Blueberries, ½ pint
- Cherries, ½ pint basket, with stems, any single variety
- Elderberries, attached to cluster, 1 quart
- Grapes, 1 bunch
- Nectarines, 3, ripe
- Peaches, 3, ripe
- Pears, 3, ripe, with stems, any single variety
- Raspberries, 1/2 pint, any single variety
- Strawberries, 1 pint, caps on
- Other: minor fruits such as quince or persimmon, 3, ripe
- Miscellaneous - any fruit not listed, display same number of specimens as similar crop listed
- Nuts, all-ripe, dry, unshelled, ½ pint, any single variety
- A collection of 3 types, such as 3 different varieties of apples

Class No.

25. FLORAL DESIGN

- List plants and varieties.
- Dry or fresh flower corsage in transparent bag.

- Table arrangement of live or dry plant material - not over 12" in diameter and under 8" in height.
- Holiday decoration of live, dried or natural plant materials - no more than 18" in diameter or 24" long.
- Plaque of dried or pressed plant material; includes other craft projects made with *real* plant material (e.g. floral pictures). Plaques and pictures need to be signed.
- Large Arrangement of live or dried plant material – for arrangements over 12" in diameter and over 8" in height.
- List ID sources.
- More information can be found at 4-H Leaflet H-7-3i Fresh & Dry Flower Arrangements <http://hdl.handle.net/1813/17533>

Class No.

26. MINIATURE ARRANGEMENT

- Arrangement of fresh or dried flowers
- Less than 6" in height and diameter – including container
- List plants used.

Class No.

27. OPEN CLASS EXHIBITS

- Exhibits deemed worthwhile but fall outside the categories described above. The decision to bring such exhibits is left to the discretion of the Extension 4-H Educator.
- List plants used. Includes wild flowers.
- Exhibits will be judged according to similar project criteria.
- Fall arrangements gourd arrangements and photo stories may be entered

HORTICULTURAL METHODS

This division gives young people a chance to an interesting, different approach to growing plants. This enhances gardening skills and encourages the participant to think creatively.

- Because of the difficulty of reproducing some of the horticultural methods for exhibiting purposes, a poster or poster series format may be used.
- Use heavy poster paper (14" x 22" minimum) as a background.
- Glue or tape photos and diagrams, along with sheets of white paper that include your description within these sections:
1) *introduction*, 2) *growing method used*, 3) *what you learned or discovered*.
- Instead of a poster, an exhibit of the method itself (such as a small hydroponics set-up) can be displayed.
- For ideas and information consult the website: <http://blogs.cce.cornell.edu/ccebroome4h/files/2010/03/BCF-4-H-Youth-Building-Exhibit-Book-2012.pdf>

Class No.

28. HYDROPONIC GARDENING

Class No.

29. SEASON EXTENDER METHODS

Class No.

30. PROPAGATION

Class No.

31. MISCELLANEOUS - ANY HORTICULTURAL METHODS NOT LISTED

- Entries will be judged according to similar project criteria

LANDSCAPE PICTURES AND PLANS

This division is a category in which youth can display what they have learned about the elements of design and how plants can be grouped effectively for ornamental or edible purposes. It also offers an opportunity to display their garden record keeping..

- All collections, pictures and plans will be enhanced by a clear, protective overlay.
- Markers, colored pencils or paints may be used to embellish the landscape plan.

Class No.

32. HOME GROUNDS LANDSCAPE PHOTOGRAPHIC ALBUM

- Must have at least six "before" and six "after" pictures of current year's work.

Class No.

33. PLAN OR MAP OF HOME GROUNDS

- Drawn to scale.
- Show things as they were at beginning of project.
- A second map, with suitable and necessary notes, showing changes and improvements made.
- In different colors, show changes and improvements yet to be made.
- Indicate direction north on plan.

See "Young People's Guide to Landscaping." At <http://www.hort.cornell.edu/gbl/pubs/index.html>

Class No.

34. PLAN OR MAP OF APARTMENT DWELLING

- Drawn to scale, showing grounds as they are currently.
- A second map, showing proposed changes that would improve existing grounds.
- Where ground space is unavailable, a terrace or porch garden of containerized plants can be depicted.
- Indicate direction north on plan.

Class No.

35. PLAN OF ANNUAL AND/OR PERENNIAL FLOWER GARDEN

- Show varieties, name, placement, height and color.
- Use scale no smaller than 1 inch equals 4 feet.
- Indicate direction north on plan.

Class No.

36. PLAN OF HOME ORCHARD (tree fruit and/or berry crops)

- Show varieties, name, placement, height and time of fruiting.
- Use scale no smaller than 1 inch equals 4 feet.
- Exhibit should indicate current year's work. Current year's work will be judged.
- Indicate direction north on plan.

Class No.

37. PLAN OF HOME VEGETABLE GARDEN

- Show varieties, name, placement, height and approximate harvest times.
- Succession of plants may be indicated by a tracing paper overlay.
- Use scale no smaller than 1 inch equals 4 feet.
- Indicate direction north.

Class No.

38. PLAN OF COMMUNITY SERVICE BEAUTIFICATION PROJECT

Class No.

39. GARDEN RECORD BOOK

- List plants chosen and varieties
- List reason for selection
- Garden design sketch, including lay-out, dimensions, and spacing
- Indicate direction north
- Photos showing before and after are helpful.

Class No.

40. HORTICULTURE OPEN CLASS

- Class is an option for exhibits deemed by the County to be worthwhile but fall outside the categories described above. The decision to bring such exhibits is left to the discretion of the Extension 4-H educator.
- Entries will be judged according to similar project criteria.
- Horticulture posters that do not qualify for other Horticulture classes may be entered here.

FIELD CROPS

Class No.

41. FIELD CROPS

- Sample of hay must be well cured, not moist.
- Grasses, legumes and silage crops will be judged on the basis of their values as forage or silage.

- Exhibits should be displayed in either tightly packed, clean baskets or slice of bale with approximately dimension 8 x 10 x 14, or as described.
- Oats – 1 peck
- Wheat – 1 peck
- Any other small grains
- Field corn – 3 ears
- Haylage – quart jar with mixture names on entry card
- Corn silage – quart jar with mixture names on entry card
- Alfalfa
- Clover
- Birdsfoot trefoil
- Timothy
- Mixed hay –state mixture on entry card
- **Feeds suitable for a 4-H animal project. Project must be specified, feed sampler attractively displayed on a board. Nutritional value and use of each sample must be described.**
- Miscellaneous entries will be judged according to similar project criteria.**

SECTION G – ENVIRONMENTAL EDUCATION
--

- The length and detail of the essay should be appropriate for the exhibitor's age and level of familiarity with the project area. Critical, reflective thought is encouraged. Some projects directly relate to environmental education (e.g., they can be used to teach others about important environmental phenomena), other projects relate indirectly to environmental education by helping the exhibitor, through production of the exhibit, to learn for himself/herself a meaningful lesson about the environment. These lessons can then change the way the exhibitor views and interacts with the natural world. Whether through direct or indirect connection to environmental education, the exhibitor must explain in his/her essay how the project helped him/her to think and act differently to the natural world and/or communicate differently with others about the natural world.
- For example, if the exhibit is a bluebird box, the essay may include an explanation of: why you chose the project, what made it interesting, what about the box makes it a good home for bluebirds, observations/plans you have to learn about bluebird behavior, why should people use bluebird boxes, how this project relates to the environment or natural resources, and what you learned while doing the project. You might also include how the project will be used to help others learn about or appreciate bluebirds and the habitat in which they live. If the project story

does not accompany the exhibit, the exhibit will not receive a maximum score.

- Exhibits showing processes, products, skill development, and relevance to environmental/natural resource issues are strongly encouraged. *Overly simplistic or non-interpretive exhibits will receive less recognition.*
- Exhibits will be evaluated on the basis of their content, quality of expression and presentation. Creativity is encouraged as is the display of materials showing observational skills, e.g. journals or sketchbooks. Age, experience and standards listed in appropriate 4-H publications will be included in the judging criteria.
- 4-H Publications mentioned below are available through Cornell Cooperative Extension in the Department of Natural Resources, phone: (607) 254-6556; e-mail: cce-nat-res@cornell.edu.

Class No.

1. ENVIRONMENTAL EDUCATION

- Nature Trails - e.g. Display of 4-H constructed nature trail or observation made along another nature trail.
- Geology - Simple collections must include the specimen's names, dates of collection, specific site(s) of collection (distance and direction to nearest town, county, state or province) and collector's name for 15 specimens. Inclusion of field journals is strongly encouraged and identification criteria must be completely and clearly defined. Exhibits showing evolutionary histories, adaptations of fossil organisms, vertical or horizontal studies of strata, or similar studies are encouraged.
- Field Identification Projects - Please note that wildflowers are evaluated in Section F - Horticulture, Fungi in Section H, - Plant Pathology, and Insects in Section I - Entomology. Collections of preserved specimens, photographs or sketches properly labeled and showing identification criteria may be displayed for any habitat in New York. Consult your local Department of Environmental Conservation for guidelines and permission in collecting specimens from the wild. Consult *Field Guides Made Easy* for additional activities and ideas.
- County- or self-initiated projects that relate to environmental education. Examples include but are not limited to: interpretation of aerial photographs; vegetation maps; plant adaptations; demonstrations of ecological principles; or computer models like GIS. Transfer of display ideas and concepts from other project areas is encouraged.

Class No.

2. FISHERIES AND AQUATIC RESOURCES.

- Exhibits may be displays or records of any Fisheries and Aquatic Resources related activity including but not limited to fishing techniques, aquatic sampling methods, aquatic insect ecology, habitat improvement or fisheries management and biology. Other fishing projects may be found in 4-H Publications.
- Water monitoring - project ideas may be found in *Water Worlds, Water Wise, Pond & Stream Safari*.
- County or self-initiated projects related to fish or fishing, including mariculture, aquaculture, commercial fisheries, sport fisheries or related equipment, skills or observations.

Class No.

3. FORESTRY

- Displays and presentations may be based upon, but are not limited to, the following projects: *Know Your Trees, Timber Management for Small Woodlands (IB 180); Wildlife and Timber from Private Lands: A Landowners Guide to Planning (IB 193); Woods of New York, Trees: Dead or Alive, Know Your Tree Diseases, Maple Syrup Production for the Beginner*; and other forestry exhibits based upon national, regional, county or self-initiated projects.

Class No.

4. RESOURCE-BASED RECREATION

- Shooting Sports – any exhibit or record based upon content of the NYS Shooting Sports Programs or any of the New York State DEC certification programs.
- Other Outdoor Recreation - Exhibits based upon related outdoor recreation activities, e.g. orienteering, cross-country skiing, snowshoeing, wilderness camping, or outdoor cookery.

Class No.

5. WILDLIFE

- Bird Study - Consult *Bluebirds of New York, Birds of Prey, Introduction to Bird Study*, or any other bird materials for exhibit ideas. Bluebird houses will be judged using the criteria from *Bluebirds of New York*. Please note, if a birdhouse is completed as a Wood Science project, it should be entered in Section J Science, Technology & Engineering.
- Habitat Improvement - Consult *Wildlife Habitat Enhancement, Enhancement of Wildlife on Private Land, Managing Small Woodlots for Wildlife* for exhibit ideas.
- Trapping Furbearers - Exhibits based upon the NYS DEC Trapper Training Program are acceptable, as are displays of equipment, pelt preparation, and discussions of the role of trapping in wildlife management.
- Other Wildlife Projects - Exhibits based upon New York's wildlife resources, *Environmental*

Awareness: Wildlife, Managing Small Woodlots for Wildlife; Wildlife Discovery, New York's Wildlife Resources (fact sheets), and Wildlife in Today's Landscapes. County projects or self-initiated projects are acceptable. A good source of potential project is the 4-H Forestry and Wildlife Invitational.

Class No.

6. REUSE AND RECYCLING

- Exhibits based on recycling or composting projects in the home or community.
- Clothing, crafts and other items created using post-consumer waste materials. It is particularly important that detailed essays accompany exhibits in this class. The essays should explain why particular materials were chosen *and* how the exhibit relates to environmental education. Many materials can be reused; why is this exhibit particularly useful (e.g., in terms of serving a functional purpose) or beneficial (e.g., making use of resources that would otherwise harm the environment)? The exhibitor must reflect, in his/her essay, on how the project has led his/her thinking about the use of natural resources to evolve and/or how the project can be used to help others understand the importance of re-purposing post-consumer materials. Creativity is highly encouraged in this class. Consult *Composting: Wastes to Resources; Wastewise; Woodsy's Resource Goldmine, Recycling in Your School Makes Good Sense; or Recycling: Mining Resources From Trash, or Composting in the Classroom* for exhibit ideas.

Class No.

7. OPEN CLASS

- This class is an option for exhibits deemed by the County Youth Educator to be worthwhile but which fall outside the categories described above. The decision to bring such exhibits is left to the discretion of the Extension 4-H educator. This class is also expected to follow the project essay requirement listed at the beginning of this section.

Please remember in addition to the completed green Entry Card, all exhibits are required to include a project essay/narrative on a separate piece of paper (see all exhibits in Section G are required above).

SECTION H PLANT PATHOLOGY

- 4-H Publications that appear in italics are distributed through Cornell Media Services unless noted otherwise.

GENERAL PLANT PATHOLOGY

Class No.

1. LEAFSPOT COLLECTION BOOKLETS OR PLANT PATHOLOGY EXHIBITS

- As described in *Know Your Plant's Disease*, and *Know Your Tree Diseases*, leaf disease notebooks or diseased plant specimens in Riker mounts may be exhibited.

VEGETABLE INSECT AND DISEASE CONTROL EXHIBITS

Class No.

2. INSECT AND DISEASE MANAGEMENT ON VEGETABLES PROJECTS

- Must exhibit a 4-H member's experience in and knowledge of this subject matter. Exhibits derived from these projects should include one of the following:
 - a) A display of preserved plant specimens, either pressed, dried or otherwise preserved in as life-like form as possible, exhibiting symptoms of insect injury or plant disease. Where possible, the insect which caused injury should be properly mounted and included in the display. All specimens should be labeled as follows: vegetable name; insect or plant disease name; date specimen collected; collector's name and county.

At least fifteen plant specimens should be included, depicting different insect or disease problems. Evaluation will be primarily weighted toward originality of display.

- b) A poster display showing the layout of your garden and indicating specific steps taken to manage pests within the past year or two. A record book may be presented indicating dates on which problems were observed, treatments were utilized and observations were made as to the effectiveness of these treatments. This poster should attempt to teach those who examine it the principles of pest management. Photographs, drawings and other visual aids may be used. Evaluation will be based on the member's understanding of the subject and effectiveness of the poster as a teaching aid.

Class No.

3. MUSHROOM COLLECTOR'S JOURNAL – NEW

- This category combines elements of the two preceding projects. Although preservation of dried fungal specimens in the manner described in *Fun With Fungi* is encouraged, this project does not require that the fungi be submitted as a collection of dried specimens. However,

preservation of your fungi strongly encouraged for future reference or for possible submission to the Cornell Herbarium.

This project should include detailed notes about each fungal specimen, photos, and sports prints. Six fungal specimens from different genera are required.

Instructions and forms for this category may be found online at:

<http://plantclinic.cornell.edu/mushroomjournal.html>

Class No.

4. PLANT PATHOLOGY OPEN CLASS

- Class is an option for exhibits deemed to be worthwhile but fall outside the categories described above. The decision to bring such exhibits is left to the discretion of the Extension 4-H educator.

<p>SECTION I ENTOMOLOGY</p>

Insect specimens must be properly mounted and displayed and have complete collection data. Suggested display case described in 4-H Entomology Project Guide (available through your Extension 4-H Educator) or museum size insect drawers or polystyrene insect cases covered with clear plastic sheets. Exhibits incorrectly prepared will not be evaluated.

GENERAL INSECT COLLECTIONS

CRITERIA FOR EVALUATION

(1st, 2nd, 3rd yr. general collections)

1. Order (15 pts.)
 - a. Minimum Requirement
 - b. Extra - one point for each two orders above required number (Max of 2 pts.)
- Specimens (15 pts.)
 - a. Minimum Requirement
 - b. Extra - one point for 5 specimens above required number (Max of 2 pts.)
- *3. Identification (20 pts.)
 - a. Minimum Requirement
(20 points for 1st-year collections - no extra points for keying beyond order)
 - b. Extra - one point for each specimen identified further than required (Max of 5 pts.)
4. Mounting and Labeling (45 pts.)
 - a. Pinning (10 pts.)
 - 1) Location of pin through insect
 - 2) Height of insects on pin
 - 3) Angle of insects to pin
 - b. Labeling (25 pts.)
 - 1) Readability 5
 - 2) Visibility (Height on pin, etc.) 5
 - 3) Proper data on labels 15
 - c. Spreading & Pointing (10 pts.)
 - 1) Spreading (10 pts. for 1st year collection - no pointing required) 5
 - 2) Pointing (using points or minuten pins) 5
5. Arrangement, Neatness & Conditions of Insects (5 pts.) 5

TOTAL

100

6. Evaluator Bonus 5

Bonus points will be given for collection where performance beyond above requirements has been shown.

TOTAL POSSIBLE

105

*All specimens identified to genus or species should be accompanied by name of source used in identification. This should be *placed on the identification label, on a separate label, or on a small card placed inside the collection box.*

No 4-H project records or loose papers (outside box) should accompany Group A collections.

Class No.

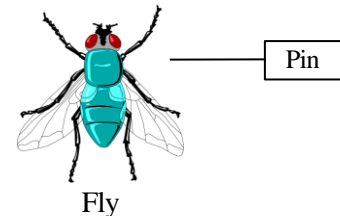
1. FIRST YEAR PROJECT EXHIBITS

- Must include a minimum of 20 specimens representing 5 insect orders.
- Classification need not be taken further than *order* names.
- Insects should be pinned properly and the wings of all butterflies and moths must be spread.

Class No.

2. SECOND YEAR PROJECT EXHIBITS

- Must include a minimum of 40 specimens representing 9 insect orders.
- Twenty specimens must have been collected during the current year.
- Twenty specimens must also be identified to common name with the name written on a label and pinned separately near the specimen (easily visible, to aid in judging) as shown in the sketch below:



- Addition of scientific names is optional in this class.
- Insects should be pinned properly and the wings of all butterflies and moths must be spread and at least one small insect must be mounted on a point or minuten pin.

Class No.

3. THIRD YEAR PROJECT EXHIBITS

- Must include a minimum of 60 specimens representing 12 orders.
- Thirty specimens must have been collected during the current year.
- Thirty specimens must be identified to a common name.
- At least 5 specimens (representing at least five families) must be identified to family.

- Scientific names (genus and species) should be included wherever possible, although insects from some orders will be difficult to identify to this level; common names should be placed on a separate label pinned near the specimen as in Class No. 2.
- Insects should be pinned properly and the wings of all butterflies and moths must be spread and at least two small insects must be mounted on points or minuten pins.

Class No.

4. FOURTH YEAR (AND BEYOND) PROJECT EXHIBITS

- Must consist of general collections.
- Must include 80 specimens representing at least 12 orders.
- Forty specimens must have been collected during the current year.
- Forty specimens must be identified to a common name.
- At least 10 specimens (representing at least 10 families) must be identified to their family. Scientific names should be included wherever possible. Common names should be placed on a separate label, pinned near the specimen as in Class No. 2.
- Proper mounting (pinned properly, wings of Lepidoptera spread, two small insects on points or minutens) will be strongly emphasized.

Class No.

5. ADVANCED INSECT COLLECTIONS CRITERIA FOR EVALUATION

1. Proper labeling of specimens	40
2. Correct identification of both insects and plant Material where applicable	25
3. Educational value	15
4. Proper preparation of specimens (pinning, setting of wings, pointing, etc.)	10
5. Originality of project and exhibit method, arrangement, etc.	<u>10</u>
TOTAL	<u>100</u>

- For advanced collections Riker mounts may also be used.
- Complete collection data should accompany all exhibits (where collected, date, and by whom?); can be placed on back of exhibit as long as the evaluator can tell which label goes with each specimen. If you exchange specimens, label as completely as possible, giving location (country, state or province, nearest town), date collected; name of collector; plus any ecological information available such as plant or insect host, habitat, etc.
- Membership in the Young Entomologists' Society (Y.E.S.) will enable young people to exchange specimens from all over the world.
- Imagination and individuality are encouraged.

- The rules for mounting, as set up for general collections, do not have to be followed, if, by doing so, the advanced collection can be enhanced. The scientific aspects and educational value, appearance, quality and arrangement will be evaluated.
- The Exhibitor Information Statement should contain educational value to you (what you learned) as well as what you see the educational value to others to be.

Class No.

6. SINGLE COLLECTIONS prepared by the combined efforts of a club.

- May be any kind of insect collection or may represent a group activity that can be presented as an exhibit.
- Regional insect collections prepared for eventual donation to a museum may be entered in this class if prepared by more than one person; otherwise these should be entered under Class No. 4.
- Evaluation will be based on number of members and completeness of exhibit.

Class No.

7. LIVING INSECT EXHIBIT

- Exhibits must convey an educational message to the public and/or the educational opportunities in 4-H work in the field of Entomology.
- Exhibits are to be arranged by the county 4-H staff and members, and completed by the opening day of the county's time period. Those contemplating Class 8 entries must get approval from the Martin Hall Superintendent.
- Live educational exhibits* are encouraged. Possible exhibits including living adult butterflies, butterfly chrysalides from which the adults are emerging, caterpillars, ant farms and aquatic insects in water tanks. Showing of a living exhibit requires that the exhibitor be on hand to care for the needs of his or her "livestock" daily.
- Exhibits will be evaluated on: educational value; appearance; quality and arrangement.
- Those planning to prepare exhibits should first make arrangements with the Superintendent.

Class No.

8. ENTOMOLOGY OPEN CLASS

- Class is an option for exhibits deemed to be worthwhile but fall outside the categories described above. The decision to bring such exhibits is left to the discretion of the Extension 4-H educator.

Class No.

9. HONEY BEE/APICULTURE EXHIBITS

- Honey – 1 pound container

- Bee/Honey products made from Beeswax – Examples: candles (at least 2), lip wax
- Display/Poster – Individual or Group – a series of posters/photos or three-dimensional exhibit representing any aspect of Beekeeping. Examples: equipment, disease, bee colony management.
- Project Record Book for 4-H Beekeeping Project.
- See Group E for live exhibits. Exhibitor will be responsible for care and supervision of any live exhibit.

SECTION J SCIENCE, TECHNOLOGY, ENGINEERING & MATHEMATICS ENGINEERING

- Articles in this section must be made and selected according to standards from project curriculum, State 4-H Club Management and Volunteer Leader Handbook plus CCE Risk Management Guidelines.
- Articles in this section must have been made and selected during the current project year.
- If power tools are used by youth in making projects, youth must be 12 years or older.
- Up to two articles per class per member may be entered (Sections JA, JB and JC Classes 1 and 2).
- For construction project, with manufactured components see Section JC
- Birdhouses entered in wood science classes will be evaluated under wood science standards. Superintendent may move birdhouses to the wildlife class under Environmental Educational Section, if appropriate.

Section JA-WOOD SCIENCE

Class No.

- 1. Hand Tool Division:** Articles made in a wood science project that was cut out, assembled and finished with hand tools only.
- 2. Power Tool Division:** Article made in a Wood Science Project that has been partially or totally completed with power tools.
- 3. Kit Division:** Article made in a Wood Science Project that is made from materials precut by an outside resource (i.e., 4-H office, commercial supplier or woodworking leader) but is assembled and finished by the exhibitor. Judges will place emphasis on the quality of workmanship performed by exhibitor. No commercial names on exhibit.
- 4. Reclaimed Lumber:** Must state origin of lumber/wood used. Project will be evaluated according to wood working standards.
- 5. Recycled Wood Projects:** made from pre-

existing items made into a new useable form (ex: a bed headboard into a bench). Project will be evaluated according to woodworking standards.

6. Open Wood Science/Shop work:

Article made in Wood Science/Shop work Project that does not fit in above categories. Judges will place emphasis on quality of workmanship by exhibitor and the intended use of the project. Exhibits to be entered in this division will be at the discretion of the Extension 4-H Educator.

Section JB- ELECTRICAL SCIENCE

Class No.

1. Electric Division:

- Article made in an Electric Project, such as a trouble lamp, test lamp, portable bench light, extension cords, pin-up or study lamp, or the rewiring of an old lamp is acceptable.
- Tension restraint device must be in place. Where appropriate Underwriters Knot should be used, especially in lamp sockets.
- Due to safety code compliance, molded polarized and/or prefabricated cords with polarized plugs; where applicable are allowed.
- Lamps without bulbs or shades will not be considered complete and will be evaluated accordingly.
- Projects involving both woodworking and electrical tasks will be evaluated on the merits of both.

2. Electronics Division:

- Article made in an Electric Project utilizing principles and construction procedures relating to electronics is acceptable.
- Projects will be evaluated on the basis of soldering and connection techniques, neatness of assembly and other assembly procedures for electronic projects.
- Projects must be hand wired.
- Project must be operable (i.e. contain all necessary batteries).
- In addition to the Entry Card include a short explanation of why or how the exhibit works and what use it has.**

Section JC-ENGINEERING

ROCKET PROGRAM

Class No.

1. JUNIOR DIVISION

- Any rocket made in a Rocket Program either from a kit or non-kit materials and totally assembled and finished by a youth 13 years of age or younger.
- Evaluators will place emphasis on proper kit assembly and finishing.

2. SENIOR DIVISION

- Any rocket made from non-kit materials and totally constructed and finished by a youth 14 years and older.
- Emphasis placed on proper construction techniques and finished project.

CONSTRUCTION PROJECTS WITH MANUFACTURED COMPONENTS

General Information: Youth entering projects in the following classes use manufactured construction pieces to complete projects. Examples are Lego*, K'nex*, Brio* and Mechano*, but projects are not limited to these examples. Projects can incorporate design, following instructions, three-dimensional thinking, design modifications, problem solving, creativity, architecture, structural design, principles of mechanics and use of color in the planning and design process. These skills relate to the professions of engineering, science, construction, architecture and art.

Evaluation will be based on completion, complexity, presentation and explanation of design, understanding of principles and visual presentations. Must include following:

- Number of pieces: Youth must know the approximate number of pieces used in assembly. For kits, this number is on the box. It is understood that after a long creative process, it may be difficult to know exact number of small pieces; the youth must provide an estimate rounded to 25.
- Diagrams: diagrams are required. A diagram could be a photograph printed on printer paper, a scale drawing on graph paper, a photocopy of an instruction sheet or a variable scale rough drawing. Relevant labels and explanations must be added. The diagram must include: 1. Name of youth; 2. the title of the project; 3. The exact or approximate number of pieces and a self-judgment of complexity level (a. easy, less than one hour to assemble; b. Medium, 1 – 3 hours construction time; or c. Complex, more than 3 hours of construction time). Juniors may use a photocopy of kit provided drawings for the basis of their diagrams, but brand logo MUST be covered and not visible. The diagram can be displayed in a plastic stand, mounted on poster board or attached in a folder. Art value, ability of written work to attract, use of color and use of font add to design presentation.
- Protection: Youth may prepare a display box for the project. There is no evaluation or points for this box; it is merely protection. A simple box could be a cardboard box with two sides removed and replaced with clear plastic.

Class no.

3. Kit: This category is restricted to juniors (ages 8

– 13). Juniors are limited to two projects in this class. If two projects are entered, they must differ significantly (for example – a creature, a building or a vehicle). Youth must enter a completed kit. Original story must describe design process and describing play with the model. Judging criteria includes: completion, complexity (number of pieces), diagram (of the completed model and key elements labeled), explanation/story (explanation of the design process, difficulties and interesting elements; describe plan value, imaginative play, what steps could be taken to improve model) and overall presentation.

4. Original Model: Youth are limited to two projects in this class, projects must differ significantly. The project can be a scene, diorama, model, building, vehicle, plants or creature. Judging criteria includes: completion, design (number of pieces, moving parts – gear systems, axle systems (wheels), hidden entrances, pulleys, joints, projectiles and hinged components; unity of design – originality, use of color, symmetry of creativity, fully developed concept diagrams – comprehensive and detailed: an overall diagram of the completed model with key elements labeled, of moving part(s) or independent component; explanation/story/written report – of design process, difficulties encountered and their solutions, description of play value, future expansion of project and overall presentation.

5. Model Demonstrating a Mechanical Science

Concept: Projects must be original, no kits and can include level arms, gears, pulleys, friction, belts, airfoils (flight, wind), catapults and load-bearing bridges and beams. Science concepts can include energy transfer, stress analysis, Newton's laws, gravity, etc. Entries in this class must include a working model, an equation describing a principle of science, a labeled diagram of the project and written explanation of the science involved. Evaluation will also include presentation and visual impact of the project. Youth may conduct experiments with model and provide results in written report. Judging criteria includes: working model that demonstrates a principle of mechanical science, must move or work as necessary; scientific equation that relates the principle, including clear definition of each term with equation displayed; labeled diagram provided that labels major parts of the model and also notes how parts or movement relates to equation; written report (no more than two pages) which explains the principle and how model illustrates the principle (may include additional page of experimental results using the model); written explanation that explains design and construction of the model, including any difficulties and how they were overcome, description of the principle of mechanical science that is demonstrated, clear understanding of scientific principles and explanation of how the model illustrates principle; and overall visual impact of project as prepared for display, including

attractiveness of display.

6. Transportation Design: applies transportation pieces such as Brio* in which youth design a transportation system (road, railroad). Drawings are to be hand drawn. Judging criteria: presentation labeled with name of exhibitor and title of project to include schematic of system drawn to scale, roads, railroads and bridges clearly labeled or identified in the legend, seniors to use 11 x 17 drawing paper, must have fully developed concept, clear details, completeness of system (no dead ends) and show creativity; legend that explains the meaning of symbols such as roads, railroad, bridge, water, vegetation, buildings; written explanation that explains the design and the purpose of the system, problems encountered and their solution and directions project could take in the future; and overall presentation, visual impact as prepared for display and attractiveness.

3D PRINTING

General Information: 3D printing uses plastic or other materials to build a 3-dimensional object from a digital design. You may use original designs or someone else's they have re-designed in a unique way. Youth must bring their finished object (we cannot print objects at the Fair). Exhibits will be judged based on the complexity of the design and shape. Must include the following:

- Software used to create 3D design.
- Design or, if using a redesign, the original design and the youth's design with changes.
- Orientation that the object was printed.

Class No.

7. 3D Prototypes - 3D objects printed as part of the design process for robot or other engineering project. Must include statement of what design question the prototype was supposed to answer and what was learned from the prototype.

8. 3D Unique Objects - 3D objects printed for their own sake. May be an art design, tool, or other object.

ENGINEERING EDUCATIONAL DISPLAYS

9. Displays: May be series of posters and a 3-dimensional exhibit related to an engineering science project.

- Display should be self-explanatory through use of signs or labels and limited to approximately card table size.
- Topics may include such things as engine parts or bicycle parts display boards, electric circuit boards, and electric quiz games, safety rules for bicycling or working in a wood shop or with electricity.

- Entry will be evaluated on the purpose or principle idea, effectiveness in illustrating one idea, appearance, arrangement and description of the display.

RELATED ENGINEERING PROJECT

Class No.

10. Any article made as a part of a directly related Engineering Science project, such as metalworking, cardboard carpentry, and safety items and not included in other classes. Kits not acceptable for senior division (14-years and older).

Section JD-GEOSPATIAL SCIENCE

Exhibits that show skills and knowledge learned through 4-H GPS and GIS projects

GIS maps: Maps made using ESRI (Environmental Systems Research Institute, Inc.) Arc GIS software or other mapping software. Criteria and Guidelines for Community Mapping Projects can be found on NYS 4-H web page. GIS map exhibits may be selected for a Display competition sponsored by NIFA and National Geographic Society.

Class No:

- 1. GIS or GPS Project or activity:** Undertaken by individual or group. Exhibit may be in the form of a project record book, photo documentation, video, CD, DVD, etc. Exhibit must include project report documenting statement of purpose and outcome of project activity.
- 2. Story or Outline of a 4-H GIS or GPS Project** Including photos, purpose of activity and summary or results.
- 3. Community Service/Youth Community Action Mapping Project:** A mapping or GPS project built around a specific community issue or project.
- 4. Educational Poster Exhibit** displaying 4-H GPS or GIS activities.
- 5. Public Presentation** on 4-H and Geospatial Science

Section JE-RENEWABLE & SUSTAINABLE ENERGY AND CLIMATE CHANGE

Educational exhibits/display(s) describing your 4-H project work done in the areas of: Renewable Energy (solar, wind, geothermal, bio fuels, hydro-electric)
Energy Conservation (home, community or school)
Tracking (or studying) Climate Change;
Activities/Studies related to managing "Carbon Footprints" in the environment Exhibits may consist of stationary or working models, posters, photo story/display or electronic media. Electronic media must be submitted on a storage device like a CD or flash drive. Information must be included on media to indicate method of viewing the entry. A short description of what was undertaken in the project,

your experience and what you learned through the project must be included. This can be included in the entry itself or on the exhibitor's information card. Note: some energy exhibits may also fit in other classes. Please select only one class to enter your exhibit.

Class No.

1. Renewable and Sustainable Energy

2. Climate Change

Section JF-SCIENCE EXPERIMENTS & EXHIBITS

Individuals and groups are encouraged to enter exhibits/displays emphasizing what they have learned and experienced in learning about science concepts in areas of agriculture, human ecology, life or physical sciences. Any type or combination of science projects along with creativity is encouraged.

Class No.

1. Experiments:

- Describe your hypothesis (what you think will happen).
- Describe the procedures you performed.
- Describe the observations you made and what conclusions you drew from your experiment.
- Include photos or drawings and samples (if possible) from your experiment.

Use heavy poster board for display. Include experiment description within these sections: 1) introduction; 2) hypothesis; 3) methods, 4) results; and 5) your conclusion

2. Public Service Projects:

- Exhibits can be of any public service or public education activity you took part in that had a scientific component to it.
- Examples may include watershed rehabilitation, recycling programs and educational models.

- Project exhibit posters/display must be clearly labeled with a written statement of what the project is, how it relates to science, and why you are interested in the project.

3. Descriptive Science:

- Science projects which are not experiments and are not applied service projects, but do consist of systematic observations and tell us about the natural world.
- Exhibit could show summaries of what you observed (how the local bird population changes with the seasons, where flies like to breed in a barn, how many bites of food different animals eat per minute, etc.)
 - Could present collections and classifications of materials which display physical or biological articles.

4. Citizen Science:

- Is the engagement of public participants in real-world scientific collaborations-asking questions, collecting data, and/or interpreting results.
- A display or record of participation in a Citizen Science project, could be part of a local, regional, national or international project, but need to include some kind of connection to scientists, researchers, or policy makers and contribute to scientific knowledge that will be put to some type of use (by researcher, policy makers, etc.) Examples include: Wasp Watchers, Project Bird Feeder, eBird, Lost Ladybug, Adopt a Pixel, Nature's Notebook, or a local project.

App Development - Exhibit an original mobile app. Describe the purpose of the app and what inspired you to create it in the exhibit information statement.

2023 Otsego County Fair

4-H Code of Conduct Form

(Be sure one of these forms, after reading and signing, is stapled to your 4-H Entry form)

This form applies to all youth entering an Otsego County Fair 4-H Exhibit. The youth and parent/guardian, by signing this form, agree to conduct him/herself in a responsible manner and abide by all expectations as stated.

Youth responsibilities:

Follow the Code of Conduct guidelines and other rules contained in the 4-H Fair Book.

Attend and participate in program orientation; prepare for the program in advance.

Be on time and participate in all scheduled sessions including workshops, recreation, evening activities, and meetings.

Cooperate with the adult advisors and program staff. Contact the adult advisor in regard to any conflict or problems during the event.

Show respect and courtesy for the entire program.

Be respectful of public property and the facilities used during the activity or event. Be responsible for your own property.

Behave in accordance with applicable federal, state, and municipal laws.

Behave in ways that are acceptable to other exhibitors, adult advisors, and hosting organizations and uphold high standards for the group by respecting the ideas, abilities, and bodies of others. Use of language and gestures found to be objectionable to others is not permitted.

Remain on the premises or assigned program area throughout the program; unauthorized absence is not permitted.

Use good judgment in selecting clothing appropriate for weather and occasion, abiding by any established dress code. Clothing that is revealing or with obscene language/pictures or with drug, tobacco or alcohol advertising is never allowed.

Abide by the lodging assignments for the entire event for easy location in an emergency. No tent or camper switching is allowed.

Abide by established written curfew and quiet times or by adult advisor's spoken word.

(Curfew means being in the tent or camper with the lights out.) Be quiet and considerate of others when they wish to sleep.

Respect the privacy of others. Visiting sleeping areas of any member of the opposite sex is forbidden.

Youth are encouraged to interact with all members of the group and not pair up with another person. Necking, kissing and other displays of personal affection are in poor taste and will not be tolerated. Refrain from all sexual activity during the program.

Possession and/or use of alcohol, tobacco, fireworks, weapons, illicit drugs or medication(s) unapproved by program staff will result in disciplinary action for the offender(s). Adult advisors may be informed of all prescription medications present during the program.

Consequences of disciplinary action:

Families of participants removed from the program will be responsible for the participants' animal(s) transportation. Event registration, lodging or other participant fees will not be reimbursed.

If damage/destruction of property occurred, participants will be assessed for the cost of damages and repairs.

Participants removed from the program may be required to relinquish all funds donated to help meet his/her financial obligations for the event.

Youth who do not follow the guidelines in this Code of Conduct Agreement while participating in a 4-H or youth event, may be required to appear before a county disciplinary review committee in addition to consequences that occur during the event.

Disciplinary action may result in loss of premiums, restricted opportunity to participate in future youth or 4-H related activities, removal from the Fair Grounds, and/or other action as the 4-H Staff, Superintendents, or Otsego County Fair Board deems appropriate.

Youth who break public laws will be dismissed from the program and will be subject to legal action by law enforcement authorities.

Youth exhibitors in violation of Responsibility #15 will forfeit premium(s), be sent home immediately, and will not be allowed to exhibit in the Otsego County Fair the following year.

I have read and understand this Code of Conduct Agreement and will abide by it.

Youth Participant's Signature

Date

I have read and understand the rules and penalties in this agreement and agree to be bound by them.

Parent/Guardian's Signature

Date

Address and telephone where parent or guardian can be reached during the fair.

Name:

Address:

Day phone: _____
(Area code)

Night phone _____
(Area code)

RETURN THIS CODE OF CONDUCT FORM WITH YOUR 4-H ENTRY

**2023 Otsego County Fair
4-H Animal Entry Form**

EXHIBITOR No. _____

*This form is due on or BEFORE
July 15 to the 4-H Office, 123
Lake St, Cooperstown, NY 13326*

Last Name _____ First _____ Telephone Number _____

Address _____ State _____ Zip _____

4-H Club Name _____ Years in 4-H _____ Age on January 1, 2023 _____

Check the species of animal you are entering. Enter the total number of entries for that species. **Use a separate form for each species.**

BEEF _____ DAIRY _____ DOG _____ GOAT _____ POULTRY _____ RABBIT _____ SHEEP _____ SWINE _____

SECTION LETTER	CLASS	ANIMAL'S DATE OF BIRTH or RABBIT COLOR	ANIMAL'S NAME AND OFFICIAL EARTAG, TATTOO, EARNOTCH, REGISTRATION OR LICENSE #	BRED BY EXHIBITOR or DOG BREED	AWARD	OFFICE USE

USE OTHER SIDE OR ADDITIONAL FORMS IF NECESSARY. FORMS MAY BE PHOTOCOPIED.

I certify that my child/4-H member has been enrolled & actively participated in the 4-H animal project(s) that corresponds to this animal species during the current 4-H Year AND has attached the County Fair 4-H Code of Conduct.

Parent/Guardian _____

4-H Leader _____

**ADMINISTRATIVE
USE ONLY**

RECEIVED:

APPROVED:

