



Fisheries Quarterly

Spring 2026 | Issue #16 | CCE Marine Program

We are CCE Fisheries, a department within Cornell Cooperative Extension of Suffolk County's Marine Program. All throughout the year, the Fisheries Team focuses on all things fisheries – testing new and upcoming fishing gear, collecting biological data on the species most important to our fishing industries, holding events to introduce local seafood to Long Islanders, and so much more. We're here to ensure the voice of our local marine fishing industry is heard, whether it be for new fishing regulations, or coexisting with ocean construction projects. This newsletter will share the progress we've made towards these goals every quarter!

At a Glance

- **Highlights from our Spring Trawl Survey off the south shore of Long Island.**
- **CCE completes research on scup Gear Restricted Areas (GRAs).**
- **North Shore Trail added to Long Island Seafood Cuisine Trail**
- **Paid internship opportunity available for ongoing Jonah Crab research study.**

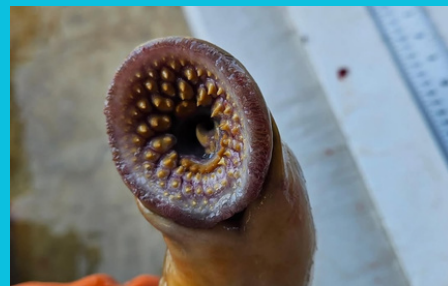
CCE Fisheries Completes Final South Fork Trawl Survey

This April, CCE successfully completed its 20th and final South Fork Trawl Survey. Over the past 5 years, CCE has embarked aboard the *F/V Bulldog* once every season to conduct research fishing and gather data relative to migratory patterns of targeted commercial and recreationally valuable fish along Long Island's south shore from Montauk to Smith Point. As one of our longest-running at-sea projects of the past several years, this is a major accomplishment for CCE's Fisheries Team.

While this spring's survey got off to a soggy start for team members Tara McClintock, Alex Mercado, and Mike Bowen, the rain gave way to bright skies and calm seas, providing pleasant at-sea conditions for our team. Despite below-average water temperatures for this time of year, this final survey yielded 3,348 fish--a significant improvement over the catch encountered on our Winter 2026 Trawl Survey.

The CCE Fisheries Team would like to extend its sincere gratitude to the dedicated captain and crew of the *F/V Bulldog* for their continued assistance throughout this project and for making these surveys possible.

Featured Fish



Sea Lamprey (*Petromyzon marinus*)



Above: Fisheries Team members Tara McClintock and Mike Bowen measure skates.

Left: The bizarre, jawless mouth of the sea lamprey, perfectly designed for latching onto hosts to feed on their blood.

• June 13

Taste the East End
at the Long Island Aquarium from 7-10:30pm

• July 6

Dan's Taste of Two Forks
at EHP Resort & Marina in East Hampton from 7-10pm

• July 8

ArtSEA Create & Sip
at The Whales Tale in Hampton Bays from 6-8pm

• August 15

Oyster Jamboree and Frolic
at Harborfront Park from 11am-6pm

• August 22 & 23

Long Island Maritime Museum Seafood Festival
at the Long Island Maritime Museum from 12-6pm

• September 12 & 13

Montauk Seafood Festival
at the Montauk Plaza 12-5pm

Scup GRA Analysis Complete

After extensive data analysis, mapping, and collaboration with commercial fishermen, CCE has completed its final report evaluating the effectiveness of the Northern and Southern Gear Restricted Areas (GRAs).

The study found that scup and squid distributions vary by year and region and rarely overlap at high abundances. Results suggest that fixed seasonal closure areas may not be the most effective tool for managing scup bycatch in the squid fishery. Industry participants also noted that minimum fish size and mesh size regulations have likely played a larger role in scup stock recovery than the GRAs themselves. The report combines scientific modeling, spatial analysis, and direct industry input to provide a comprehensive look at how these management measures affect fish populations and fishing communities.

This study's results will be shared and discussed at the August MAFMC meeting.



North Trail Added to Long Island Seafood Cuisine Trail

We are pleased to announce that as of this spring, the North Shore branch of the Long Island Seafood Cuisine Trail is now active! The Seafood Trail App guides customers to Long Island establishments where they can enjoy a fine local seafood meal, pick up a variety of local oysters for a tasting, take-out a quick seafood lunch, or bring home fresh fillet to prepare a delicious fish dinner. Follow the trail for locations that are known to appreciate and celebrate the bounty of our waters while boosting business and supporting Long Island's fishing communities.

The South Trail runs from Bay Shore to Montauk, and the North Trail runs from Northport to Greenport. Click the link below to follow the trails to restaurants and fish markets selected for their elevated commitment to choosing local seafood!

<https://www.localfish.org/seafood-trail>



Internship Opportunity Available!

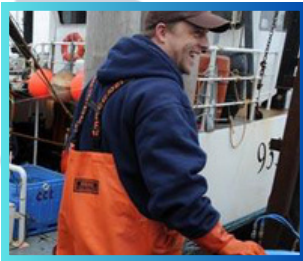
The CCE Fisheries Team is offering a paid internship opportunity to support its Marine Fisheries Program in conducting at-sea data collection for an ongoing Jonah crab research study.

Intern responsibilities include participating in fieldwork aboard commercial fishing vessels 1–2 days per week, assisting with biological sampling and data collection, as well as 1–2 additional days per week performing data entry and review in the office (averaging approximately 3 days per week total). The internship will run from early July through early September. A flexible schedule and reliable means of transportation are required to accommodate variable fishing trip times.

To apply, please follow the link below to our application portal:

https://cornell.wd1.myworkdayjobs.com/CCECareerPage/job/New-York-State-Other/At-Sea-Research-Intern---Riverhead--NY_WDR-00058917

The CCE Fisheries Team



Scott Curatolo-Wagemann
Fisheries Director



Tara McClintock
Fisheries Dept. Manager



Emerson Hasbrouck
*Marine Program Director
Emeritus*



Alex Mercado
Fisheries Specialist



Kristin Gerbino
Fisheries Specialist



Tyler Guteres
Fisheries Technician



Mike Bowen
Fisheries Coordinator



Illusion Rivera
Social Media Manager



Contact Us

(631) 727-7850
423 Griffing Ave Suite 100,
Riverhead, NY 11901

Cornell Cooperative Extension
Marine Program

Spring 2026

Follow Us

  @ccefisheries
@localLongIslandFISH