



GROW A ROW

Cornell Cooperative Extension of Schoharie and Otsego Counties (CCESO) Grow a Row project is a community-driven initiative that encourages gardeners to plant an extra row—or grow a little extra—of fruits or vegetables to donate to local food pantries and hunger relief organizations.

By sharing fresh, locally grown produce, participants help combat food insecurity and increase access to healthy food across Schoharie and Otsego Counties.

HELPFUL RESOURCES

CCESO GROW A ROW

<https://cceschoharieotsego.org/grow-a-row>

CORNELL GARDEN BASED LEARNING

<https://gardening.cals.cornell.edu/>

CORNELL HOME GARDENING VEGETABLE GROWING GUIDES

<http://www.gardening.cornell.edu/homegardening/scene0391.html>

OTSEGO COUNTY HUNGER COALITION

<https://otseghunger.org/>

SCHOHARIE COUNTY FOOD PANTRIES

<https://regionalfoodbank.net/agency-list-by-county/schoharie/>

CONTACT US



607-547-2536 ext. 235

518-234-4303 ext. 125



mkf48@cornell.edu



www.cceschoharie-otsego.org

Cornell Cooperative Extension is an employer and educator recognized for providing equal program and employment opportunities in accordance with applicable laws.



PLANT HARVEST DONATE

Help Feed our Community
One Garden at a Time



**Cornell Cooperative Extension
Schoharie and Otsego Counties**

PLANT



SIGN-UP TO BE A GROWER

As a Grower, you join a growing network of community gardeners united by a shared commitment to increasing access to fresh fruits and vegetables while making good use of the abundance our gardens often provide.

CCESO Master Gardener Volunteers and staff will provide Growers with gardening education and support throughout the growing season and help to facilitate connections with food pantries.

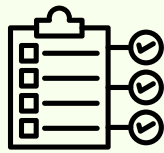
Growers can be home gardeners, school gardens, community gardens, and farms!

HARVEST



NO MINIMUM REQUIREMENTS

Grow and donate what you can—**there are no minimum donation requirements and no commitments.**



TRACK DONATIONS

Donated produce is tracked by the Grower or the Food Pantry.



COMMUNITY

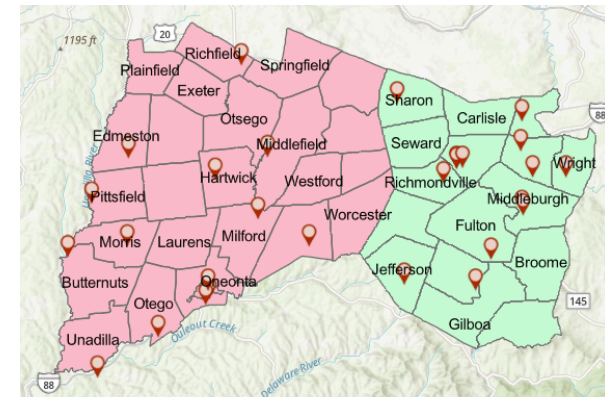
Opportunities for Growers to network & build community with other Growers

DONATE



FIND A DONATION SITE

Growers can locate produce donation sites using an interactive map. This map will show participating food pantries, their location, hours, contact info, and type of produce accepted.



<https://cceschoharie-otsego.org/grow-a-row>

MORE INFORMATION OR TO SIGN-UP AS A GROWER

[HTTPS://CCESCHOHARIE-OTSEGO.ORG/GROW-A-ROW](https://cceschoharie-otsego.org/grow-a-row)

