



table of contents

Recycling at Home and Work	4-5
Curbside Garbage	6
Drop-off Stations	7-8
Mercury Info	8
Household Hazardous Waste	9
Disposing of Materials	10-11
Composting	12-13
Community Composting	14
Adopt-a-Highway	15
Reduce/Reuse Tips	15

Chemung County Waste Disposal and Recycling Information Guide

introduction

In 2005, an agreement between Chemung County and New England Waste Services of NY, Inc. (NEWSNY) was established to continue the environmentally sound management of the county's solid waste resources. Under the subsidiary Chemung Landfill, LLC, NEWSNY became responsible for the operations and maintenance of all county-owned Solid Waste and Recyclable Management facilities.

The Chemung facilities maintain the following permits and plans in an effort to continue protecting our resources.:

- New York State Department of Environmental Conservation Part 360 Operating Permit
- State Pollution Discharge Elimination System (SPDES) Permit
- Title V - Air Quality Permit
- Part 364 - Waste Treatment Permit
- Stormwater Pollution Prevention Plan
- Spill Prevention, Control and Countermeasures Plan
- Operations & Maintenance Plans

Should you have any questions or comments regarding the County's Resource Management Facilities, please call 607-737-2820.

zero-sort recycling

No need to sort recyclables. Just put them in one bin.

Glass

Food and beverage containers, jars of any color.

Cardboard

Boxboard, corrugated cardboard, product and food packaging such as cereal, pasta, pizza, tissue and paperboard boxes, beverage holders, paper towel and toilet paper cores and paper bags.

Paper

Newspaper, junk mail, envelopes, magazines, soft cover books, file folders, any color paper, paper cartons such as milk, egg and juice boxes.

Metal

Household and kitchen items such as aluminum cans, pie plates, trays, foil, tin cans and small steel containers.

Plastic

Containers, bottles and jugs (#1 - #7) such as food, beverage, beauty and cleaning products, detergents, dairy tubs, plastic takeout containers, flower pots and trays. Large rigid plastic items such as 5-gal. buckets, sleds, soda crates, laundry baskets, plastic chairs, carts and garbage cans.

Not Accepted: Plastic bags, window glass, mirrors, light bulbs, dishes, Pyrex, ceramics, paper towels, facial tissue, styrofoam, recyclables containing food waste, paints, oils, hazardous material, needles, syringes, VCR tapes, CDs/DVDs, scrap metal, pots or pans.



How recycling gets done

Zero-Sort recycling is available to all Chemung County residents, regardless of the hauler you use. Recyclables go to Cassella's state-of-the-art facility. Zero-Sort is a process during which numerous operations will separate the recyclable materials by category, making sure your recyclables take the shortest route from your bin back to the shelves.

No sorting on your end makes recycling quick and easy. Just focus on tossing all recyclables into your recycling bin and your hauler takes care of the rest. Please empty and rinse all containers as well as flatten and break down cardboard boxes.

Recycling at Work/Business

These materials and others are recyclable:

White and colored paper

Glossy paper

Envelopes (plain and window) and folders

Card stock and cardboard, (dry and flattened)

Newspapers and junk mail

Magazines, trade journals, catalogs

Telephone directories

Brown paper bags

Soft cover books

Clear, green or brown glass jugs, jars

Plastic bottles, jugs, containers

Tin and aluminum cans

Plastic wrap: Go to how2recycle.info

Ziploc bags: Go to www.ziploc.com/sustainability

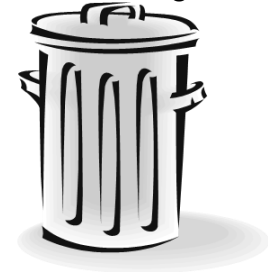
curbside garbage

What can I put in my garbage bags?

Place your garbage in bags (Check with your local municipality for type) within your sturdy plastic or metal garbage bin.

Examples of bagable items:

- Household trash
- Soiled kitty litter
- Plate glass
- Dishes and pottery
- Spoiled food
- Plastic bags
- Small pieces of wood or sheetrock
- Latex paint cans (see page 11)
- Small toys
- Small plastic/metal wastebaskets & pails



Generally, the county does NOT allow LARGE, BULKY, HEAVY or DENSE items in the bags because they can cause damage to the processing equipment, and they do NOT allow selected materials in the bags for various other reasons. The items listed are examples only.

What NOT to put in garbage bags:

Asbestos, flammables, ammunition, items containing freon, dead animals, compact fluorescent light bulbs/tubes, ballasts, liquids, bowling balls, bricks, cinderblocks, tires/rims, bathroom fixtures, car/engine parts, electronics, appliances, large toys, bicycles, metal piping.

If you are unsure of how to dispose of specific items, contact Cornell Cooperative Extension of Chemung County at 734-4453.

drop-off stations (DOS)

These Drop-off Stations are made available as an alternative to curbside pickup and for the convenience of Chemung County residents. All DOS's accept solid waste and recyclables. Large quantities of waste or recyclables must be taken to the Materials Recycling Facility on Lake Street or to the Landfill in Lowman as appropriate. **For more information, call 737-2980 as days and times can be subject to change.**

Drop-off Stations are located at:

BIG FLATS

3305 Chambers Rd. Mon & Fri. 8am-4pm
Sat. 8am-12pm

ELMIRA (Materials Recycling Facility/Lake St. Scales)

1690 Lake Street M, Tu, Th, Fr 8am-4pm Sat. 8am-12pm

ERIN

1892 Swartwood Rd. Mon., 8am-4pm Sat. 8am-3pm

LOWMAN (Landfill)

4349 County Route 60 Tu & Th 8am-3pm Sat. 8am-12pm

SOUTHPORT

93 Institution Rd. Wednesdays 8am-4pm Sat. 8am-12pm

***DAYS/TIMES SUBJECT TO CHANGE**

***Need to replace your blue recycling bin? Bins can be purchased at the Lake Street Transfer Station for \$12 (price subject to change)**

drop-off station rules

- Recyclables must be placed in the appropriately marked bins.
- Solid waste must be placed in specially marked county bags before being put into the trash area. Colored bags are NOT permitted. All waste must be visible through the county bag. County bags are available for a fee at the DOS booth window.
- Small amounts of construction and demolition debris are accepted in bags only.
- Large and/or dense items are NOT accepted at these stations. Items such as bowling balls must be taken to the Lake Street facility.
- Liquids and hazardous waste materials are NOT accepted.

See page 6 for a list of items that can be brought to the Drop-off Stations and can be mixed.

For a complete list of solid waste materials, disposal locations, preparation instructions and rates, visit www.chemungcounty.com

DON'T PUT ITEMS CONTAINING MERCURY IN THE TRASH!!!

Mercury is an element that can be harmful to human health and the environment if it is not disposed of properly.

Mercury will not harm you or the environment as long as it is inside the items and is taken care of properly at the item's end of use.

Mercury can be found in a variety of household items, which include:

- *Fluorescent bulbs
- *Thermostats
- *Thermometers
- *Cooking Thermometers
- *Button-Cell Batteries

IF YOU HAVE MERCURY TO DISPOSE OF, PLEASE SEE NEXT PAGE. (9)

household hazardous waste collection day

Spring and Fall Household Hazardous Waste Collection events are funded by Casella Waste Management and presented by Chemung County and Cornell Cooperative Extension of Chemung County. Pre-registration is required by calling CCE at 734-4453 weekdays during the 3 weeks prior to the HHW event. Visit chemung.cce.cornell.edu for more information.

What can I bring?

- Aerosols
- Ammonia
- Antifreeze
- Arts and crafts supplies
- Batteries (household types, not car batteries)
- Bleach
- Brake fluid
- Cesspool cleaners
- Drain cleaners
- Driveway sealer
- Dry cleaning fluids
- Engine and radiator flushes
- Floor cleaners
- Fluorescent lights (tubes or bulbs)
- Gasoline
- Herbicides/insect sprays
- Mercury, items containing mercury (See previous page)
- Metal polish
- Moth balls
- Muriatic acid
- Oil based paint
- Old chemistry sets
- Oven cleaners
- Paint thinner
- Pesticides
- Photo chemicals, inks
- Pool chemicals
- Radiator cleaners
- Rodent killers
- Rust preventatives
- Sealants
- Solvents
- Transmission fluid
- Wood preservatives

Items NOT ACCEPTED on Household Hazardous Waste Day

Asbestos, ammunition, appliances, batteries for vehicles, building materials, electronics, hypodermic needles, medical waste, leaves/grass clippings, refrigeration units, tires and latex paint. For safe disposal of these items, see pages 10-11 of this booklet.

disposing of hazardous materials & other items:

Non-Hazardous Solid Waste - Casella Waste Services 796-2000/Fosters Disposal 734-2502/Jim's Trucking 734-9745/B&E 866-263-3306

Dumpster/Container Service - Casella Waste Services 796-2000/Foster's Disposal 734-2502/Swarthout Recycling 936-0013/Shulman Co. 733-7111

Hazardous Waste/Liquids/Waste Oil - Clean Harbors 800-444-4244/Safety Kleen 585-266-2411/Hazleton Oil 800-458-3496/Waste Management at www.wm.com /Businesses can call Clean Harbors at 603-340-4611.

Ammunition, Gun Powder - Mike Mize 546-4334 or call your local Sheriff

Large Appliances - Microwaves, washers, dishwashers, stoves and dryers can be brought to the Lake Street Scales in Elmira (fee). All loads must be tarped and tied down. The City of Elmira has a Furniture and Appliance Pickup Service for a fee (register at the City Clerk's Office), or find private sector haulers in your phone directory.

Appliances containing FREON (a/c, dehumidifiers, refrigerators, etc.) - Swarthout Recycling 936-0013/Foster's Disposal 734-2502/Fix Rite 733-3195/Refrigerators: Arrowhead Disposal 607-535-5496

Asbestos - Refer to your phone book under Asbestos, requires a specialist.

Batteries, household - Tractor Supply 739-6380/Interstate Battery 562-3555/local auto parts stores/HHW event 734-4453

Batteries for Cars, Boats or Lawnmowers - some garages and battery sellers will take them (local Auto Zones)

Building Materials - Wood, demolition materials, ceramic sinks, wooden furniture, sheetrock, plaster, roofing materials and construction debris are accepted at the Lake Street Scales.

Carbon Monoxide Detectors - Remove battery (hazardous waste). Unlike smoke detectors, carbon monoxide detectors do not contain radioactive materials, often safe to wrap in a sheet of newspaper and throw in your normal trash. Double check with manufacturer

Compact Fluorescent Light Bulbs - HHW event 734-4453/Lowe's 739-6106

Contaminated Soil/Industrial Waste Disposal Processing -

Beavers Petroleum 739-1790/Casella Waste Services 796-2000/Sheesley's Sewer Service 733-1862

Computers, TVs and other Electronics/Small Appliances etc. -

Accepted at the Lake St. Scales-737-2980/REACT eCycling, 225 Colonial Dr., Horseheads-739-8401/Best Buy-739-9471/dellconnect.com for working computers, laptops and tablets. (Partnership between Dell and Goodwill)

Dead Animal Processing - Southern Tier Hide & Tallow 734-3661

Denim - bluejeansgogreen.org

Fire Extinguishers - Kaplan's 733-6531/LaFrance 733-5511 (Erie Street)

Fireworks - Call your local Sheriff's Dept. 737-2987

disposing of hazardous materials & other items cont'd:

Fluorescent Light Tubes/Ballasts - HHW event 734-4453/Clean Harbors 800-444-4244/Safety Kleen 585-226-2411/check your local Lowe's or Home Depot

Hypodermic Needles (used) - call your doctor or hospital. Stericycle offers a household mail back option and may hold collection events in the area.

www.stericycle.com/consumer-needle-disposal. Check Guthrie Pharm in Sayre

Latex Paint - Harden by exposing to air or mixing with kitty litter.

When hardened, place in trash with lid removed.

Leaves, grass clippings - Compost, or contact your municipality for yard waste program. City of Elmira residents can drop off brush, leaves and grass clippings at the City Yards. www.cityofelmira.net. For composting information, see pages 12-14.

Medications - Drugs/prescriptions can be dropped off at the Town Hall in the Town of Elmira, Elmira City Hall, Horseheads Village Hall and your local Gerould's Pharmacy during regular business hours, please call for details, OR you may call your local Sheriff's Dept. (737-2987) for collection event dates OR mix medications with something undesirable such as coffee grounds, cat litter or dirt, tape up containers and toss in the garbage. The national drop-off event calendar can be found at:

www.deadiversion.usdoj.gov

Mercury containing items - Household hazardous waste/please see pg 9.

Microwaves - Shulman's will accept 733-7111

Propane Tanks - Suburban Propane 739-4141/Kaplan's 733-6531

Plastic bags - Many stores have recycling bins for plastic bags (No curbside)

Paper Shredding Service - Staples .99 per lb/Southern Tier Industries 734-6151/For local Shredding Events please call Chemung Canal at 737-3711 or First Heritage FCU at 936-4667

Refrigerators - accepted for FREE at Arrowhead Disposal 535-5496

Scrap Metal - Kaplan's Scrapyard 733-6531/Shulman & Co.

733-7111/WM Spiegel & Sons 733-5033

Smoke Detectors - Remove battery (hazardous waste) and call manufacturer or local fire department to inquire about disposal as some contain radioactive materials

Styrofoam - Check your local UPS and Staples stores, or place in trash. (Not recyclable)

Tire Recycling - Annual tire collection 739-2009/Parmenter Tire 739-3642/Lake Street Scales

Used Cooking Oil Recycling - Southern Tier Hide and Tallow 734-3661

Used Motor, Hydraulic or Transmission Oil and Car Batteries - Tractor Supply 739-6380/NYS law requires that these materials be accepted at local service stations and garages for disposal/recycling. Also Auto Zone stores will take motor oil.

Vacuum Cleaners - Best Buy will accept most types for free/call 607-739-9471 for details.

VHS tapes and CDs - www.greendisk.com

composting

What is Compost?

Compost forms naturally nearly everywhere. Leaves drop from trees. Grass clippings are left after mowing the lawn. Plants and animals die. Over time, these organic materials break down and decompose. The rich, dark brown, crumbly, soil-like material that results is called compost. This is nature's way of recycling nutrients and returning them to the soil so they can be used again. By taking advantage of this natural recycling process, you can help lighten the load of waste that would otherwise go to the landfill.

What can I compost?

- Yard wastes such as fallen leaves, grass clippings, weeds and the remains of garden plants
- Raw kitchen scraps except for meat, fish, bones and fatty foods such as cheese, salad dressing and leftover cooking oil
- Woody yard waste, chipped or shredded, can be used as a mulch or for paths where they will eventually decompose and become compost.

How do I make a compost pile?

To build a simple compost bin, you'll need the following

- Small mesh wire fencing or snow fencing
- Seven or more rough boards or stakes, depending on the shape of bin you choose
- Build a square, rectangular or circular structure. For a typical home garden, build a bin 3-4 feet in height and 5-8 feet square. Locate it away from buildings and combustible materials and close to a water source.

To start your compost pile:

- Spread a layer of plant wastes 6-8 inches deep in the bottom of your bin. Moisten the layer thoroughly.
- Make a second layer of high nitrogen fertilizer, such as 10-10-10. This will be a very thin layer—use only about 1/2 lb. or 1 cup to each 30-35 square feet. Moisten thoroughly.
- Make a third layer with a few shovels full of garden soil, about 1 to 2 inches deep. This will ensure that plenty of decay organisms are present in your compost pile. Again, moisten thoroughly.

community composting

- Repeat steps 1, 2 and 3 until you have used up your waste material. To start, your pile should have at least 4 or 5 layers of waste.

Kitchen scraps (minus meat, fish, bones and fatty foods) should be added to the center of the waste layers where heat will be the greatest.

Pile waste materials loosely in the bin. Too much compaction inhibits the flow of air through the pile. It helps to make the top layer slant toward the center where it will catch rainfall. **Water is the key to successful composting.** A compost pile should be kept damp, but not soggy, especially during dry spells. It will take six months to a year before the compost is ready for use.

Portable compost “machines” are available to purchase from the Chemung County Stormwater Coalition. Call 796-2216. Other models and sizes are available at home improvement stores.

Composting Dos and Don'ts

Do add lime, small amounts of wood ashes or crushed eggshells to the compost pile to neutralize acids that may form and cause odor problems.

Do mix grass clippings with other wastes to loosen them up.

Do keep your compost pile damp.

Don't use unfinished compost. It will rob your plants of nitrogen instead of acting as a fertilizer.

Don't compost weeds that are heavily laden with seeds. Some seeds will not be killed during the heating process.

Don't add meat, fish, bones or fatty food scraps to the compost mixture. They will attract animals and they do not decompose readily.

Don't add diseased vegetable plants to the pile if the compost will be used on a vegetable garden. The diseased organisms may reappear the following year.

Community composting is beneficial because leaves take up too much space in landfills. Many communities now ban leaves from landfills. Many households do not have the time or space to compost large quantities of organic waste such as fallen leaves.

Composting is environmentally safer. Leaves in landfills generate dangerous gases. Burning leaves create smoke pollution and is unlawful in most communities.

Some communities will accept leaves and other yard wastes for community compost heaps. If no program exists, urge your community leaders to put one in place.

Why should I make compost?

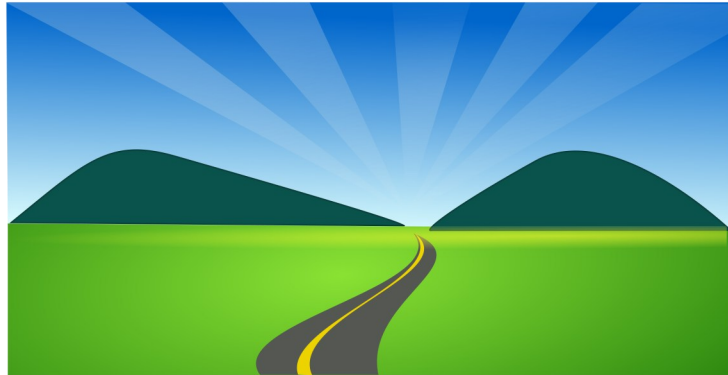
Composting is an easy practical way to recycle your organic yard and kitchen wastes. Compost is an excellent soil conditioner for even the smallest yard and garden. It's safe to use and it costs practically nothing to make. Compost grows healthy plants and healthy plants improve the air by removing carbon dioxide and making fresh oxygen.

For your community, a recap:

- Composting could remove more than 15 percent from the solid waste stream, if everyone participated.
- Many communities now ban leaves from landfills forcing residents to find other alternatives. Some communities have started composting programs.
- Composting eliminates air pollution caused by burning leaves and other yard wastes.
- Composting recycles nutrients by returning them to the soil.

Community composting is available for City of Elmira residents, Town of Elmira residents, Town of Southport residents, and Village of Horseheads residents. Check with your local municipality public works department or local hall to inquire about composting programs available in your area. Chemung County offers a compost facility for all residents, located on Blostein Blvd. in Horseheads. For more information, call 607-739-3896.

Is your group/organization interested in protecting your local environment? Consider the Adopt A Highway program.
Call 607-734-4453 Ext 214 / 607-271-9284 for more information.



Chemung Landfill, LLC

An Affiliate of **casella**
Waste Systems Inc.

REDUCE/REUSE TIPS AND TRICKS:

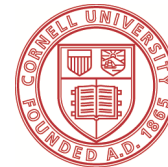
- *reduce trash by recycling/composting
- *pre-cycle (be aware of packaging materials when shopping)
- *look for less packaging
- *buy products made from recycled material
- *donate unused items
- *reuse as much as possible
- *check out FREECYCLE.org to post or find free usable items
- *consider donating usable items (working, good condition) to Habitat for Humanity Restore 936-4444 Ext 0330

Why use a reusable tote/bag?

- *on average, each of us use 300 plastic bags per year
- *one plastic bag can take up to 500 years to break down
- *our oceans contain trillions of plastic
- *fish and other ocean animals swallow plastic bags



For more information or to learn more about recycling at your home, business or school, contact Cornell Cooperative Extension, 734-4453 or visit our website at chemung.cce.cornell.edu



Cornell University
Cooperative Extension
Chemung County

425 Pennsylvania Ave., Suite 107, Elmira, NY 14901
607-734-4453 Fax: 607-734-7740 chemung.cce.cornell.edu

Cornell Cooperative Extension is an employer and educator recognized for valuing AA/EEO, Protected Veterans, and Individuals with Disabilities and provides equal program and employment opportunities.