

Having trouble viewing this email?[Click here](#)

You're receiving this email because of your relationship with Cornell Cooperative Extension of Steuben County. Please [confirm](#) your continued interest in receiving this monthly update about our activities.

You may [unsubscribe](#) if you no longer wish to receive our emails.



Cornell University Cooperative Extension Steuben County



E-News Cornell Cooperative Extension of Steuben County

December 2014- Vol 6, Issue 12

In This Issue

High Tunnel School
Southern Tier Maple School
Late season grazing pasture walk
Berry Grower workshops
Keep food safe this holiday season
Maple confections workshop
Corning Winter Farmer's Market
CCE-Steuben Annual Meeting
Healthy menus
4-H News
What's Going On in the Community

[Join Our Mailing List!](#)

Steuben County Robotics meeting today....

The first meeting of the Steuben County Lego Robotics Program will be held on Monday, December 1 from 4-6 p.m. at the Howard Community Building.

Everyone interested is welcome to attend the first meeting.

For more information [visit our website](#) or contact Marlaina Bennett

New York State



at 607-661-6383.

Learn best management practices for high tunnels...December 2nd

Tuesday, December 2, 2014
Civil Defense Center
7220 State Route 54
Bath, NY 14810
10:00 a.m. - 3:00 p.m.

A High Tunnel School on Best Management Practices for New High Tunnel Growers will be held on Tuesday, December 2, 2014 from 10 a.m. to 3:00 p.m. at the Civil Defense Center, 7220 State Route 54 in Bath. The program is targeted for commercial growers



new to high tunnels. Natural Resources Conservation Service cooperating farms are particularly encouraged to attend. All who are interested in improving their crop yield, quality, and profitability by using high tunnels are welcome.

Topics include Site Selection & Structural Considerations, Crop & Variety Selection, Cultural Management, and Disease Management. An experienced grower panel will include:

- Judson Reid, Specialist with Cornell Vegetable Program
- Amy Ivy, Specialist with Eastern New York Horticulture Program
- Elizabeth Buck, Cornell Vegetable Program

Cost is \$25 per person which includes lunch, refreshments and resource materials. Register online with a credit card at <http://cvp.cce.cornell.edu>, call Stephanie Mehlenbacher at 607-583-3240, or mail the registration information and payment to CCE-Steuben, 3 E. Pulteney Square, Bath, NY 14810. [For more information, visit our website.](#)

No recertification credits are offered with this program. This program is sponsored by CCE Clinton County and CCE Steuben County in collaboration with the Cornell Vegetable Program and the Eastern New York Commercial Horticulture Program and is funded in part by a Specialty Crops Re-search Initiative block grant through the NYS Dept. of Ag & Markets.

Join us Dec 6 for Southern Tier Maple School...

**December 6 - Southern Tier Maple School
9 a.m. - noon at the Tyrone Fire Hall; SR 226; Tyrone, NY**

Featuring Cornell Cooperative Extension's state maple specialist, Steve Childs, this annual refresher will help maple producers of all levels improve the productivity, efficiency and profitability of their operations. The first hour will provide information on getting started to

those new to maple syrup production. Light refreshments provided. This event is free and open to the public. For general information on maple syrup production, please visit: www.cornellmaple.com For additional questions, contact Brett Chedzoy of Schuyler CCE: bjc226@cornell.edu (ph: 607-535-7161) or Kerri Bartlett ksb29@cornell.edu (607-583-3170).



Join us Dec 11 for a late-season grazing pasture walk...

Late-Season Grazing Pasture Walk at Angus Glen Farms in Watkins Glen, NY.
Thursday December 11th from 3:00 to 4:30 pm.



Join the Tri-County Graziers for a unique early-winter pasture walk to see innovative grazing practices that improve the "bottom line" through reduced winter feeding costs, while improving animal and pasture health. Angus Glen Farms, LLC is an "Animal Welfare Approved" 300-acre grazing operation that raises over 100 head of Angus cattle year-round on pasture. Participants will learn about: pasture stockpiling; bale grazing, "living barns" and tips for winterizing a grazing operation. This pasture walk

is free and open to the public. Light refreshments will be served. The walk will take place rain, sun or snow and expect moderate walking in pasture conditions. Sponsored by the NY NRCS Grazing Lands Coalition, and organized by Cornell Cooperative Extension and the Upper Susquehanna Coalition. Please RSVP to Brett Chedzoy of Schuyler CCE: bjc226@cornell.edu or by phone: 607-535-7161.

Are you getting a real Christmas tree this year?

Gather your family and friends together and head out for that time honored tradition of

selecting a farm-grown real Christmas tree for your home. New York State Christmas tree farms produce fragrant, beautiful trees and wreaths in all shapes and sizes. This year make it a real Christmas, starting with a real tree. [Find out more here.](#)



Attention Berry Growers!

**GROWERS of Fall RASPBERRIES, Mid-Season & Late BLUEBERRIES,
& Day-Neutral STRAWBERRIES:**

SAVE THE DATE!

**Spotted Wing Drosophila (SWD)
WINTER REGIONAL WORKSHOPS**



CENTRAL NY– Syracuse

Wed., Dec. 17, 2014

EASTERN NY- Voorheesville

Wed. Jan. 14, 2015

WESTERN NY- Batavia

Wed. Mar. 4, 2015



- **THIS** is the place to learn up-to-date SWD management practices, based on 2 ½ years of research funded by legislative allocations
(The 2015 Expo will focus on other topics of importance to berry growers)
- **5.5 DEC Credits available!**

COMPLETE DETAILS COMING SOON...

Sponsored by: NYS Berry Growers Association, Cornell Cooperative Extension, Cornell University College of Agriculture and Life Sciences, & NYS IPM Program with funding support provided by: NYS Legislature, & NY Farm Viability Institute

Some financial advice for the season...

Holiday Spending that won't Bust your Budget

For many families, the holidays and overspending go hand in hand. As a financial counselor, I see it all the time. Clients seldom think about budgeting BEFORE the holidays



arrive. While the idea seems simple; it's the execution that's the problem! With some planning and creativity, you can still have a joyous holiday season this year and every year after without busting your budget. [Read 7 tips from America Saves.](#)

Cut the Cost of Health Insurance

There is a new tax credit to help lower and middle income families. How does it work and do you qualify? Visit The [New York State of Health website](#) and find out!

Keep food safe during your holiday celebrations!

Keep Food Safe: serving and storage tips for the holidays:

December is a time for holiday parties. As we pass dishes with friends and family it's



important to keep in mind food safety. Properly serving and storing leftovers is an important step in preventing food-borne illnesses. Keep these tips in mind to keep food tasty and safe.

When Serving Food:

- Keep hot foods hot. 140° F or above.
- Keep cold foods cold. 40° F or below.
- Throw out anything that's been at room temperature for 2 or more hours.
- Have serving spoons in each item- this stops foods from being "cross-contaminated" or having the bacteria from one food spread to another.

When Storing Leftovers:

- Store leftover food immediately. The longer food sits out the more bacteria can grow on it.
- Make sure refrigerators and freezers are at the proper temperature. Refrigerators should be below 40°F and freezers should be kept at 0°F. This prevents bacteria from growing.
- Keep your refrigerator and freezer clean. Old spills or spoiled foods can cause bacteria to grow.
- Keep all food in containers or cover trays with tin foil or plastic wrap.
- Raw meats should be kept separate from other foods. In general keep raw food and cooked food separate.

Maple confections trainings....

December 20 - Maple Confection Workshop

The Cornell Maple Program is featuring maple confections trainings conducted by Stephen Childs on Saturday, December 20th at the Arkport American Legion. The workshop will feature training and hands-on experience in making maple confections, in particular maple sugar, maple cream, molded maple sugar and crystal coating. The participants will be trained in using the diabetic glucose meter to measure invert sugar in maple syrup, how to properly blend syrups to a desired level of invert sugar and the factors that control crystal size in maple confections. The program will also focus on the machinery and techniques that can improve a producer's time efficiency when making these value added products.



These workshops will be suitable for very experienced as well as novice confection-makers. Each participating maple farm will receive a New York State Maple Confections Notebook. Each participant will need to bring one quart of syrup to be used in the program.

Cost is \$10 per person. Contact: Stephanie Mehlenbacher, Cornell Cooperative Extension of Steuben County, 3 East Pulteney Square, Bath, NY 14810, 607-583-3240 or sms64@cornell.edu.

The Corning Winter Farmer's Market this month...

The Corning Winter Farmer's Market is open from 11:00 a.m. to 3:00 p.m. on the first and third Saturdays of the month -December 6 and 20, 2014. The market is located inside the Information Center of Corning at 1 West Market Street.

Come purchase local honey, vegetables, greens, homemade granola, wine, breads, jams, apples and much more!

The Corning Winter Farmers' Market is proud to announce we will have new vendors this year. Three that you will meet this week are Sugar Haven Farms, Stewart's Family Farm, and Little Lavender Lady. Sugar Haven Farms will have (delicious) beef and maple syrup. Stewart's Family Farm will have produce, maple syrup, and more. The Little Lavender Lady will have herbal oils, gluten free baked goods, and tea.

[Join them on Facebook!](#)



CCE-Steuben Annual Meeting

The 2014 Annual Meeting of the Cornell Cooperative Extension Association of Steuben County will be held Thursday, December 11, 2014 at 6:00 p.m. at the Steuben County Office Building. The agenda will include a presentation of the 2014 annual report, an executive director update and outlook for 2015, and report of 2014 election results. Please call 607-664-2300 for details.



Above, at the 2013 Annual Meeting, outgoing Board Member Pepi Leids was recognized for her leadership by Executive Director Thomas N. Tomsa, Jr.

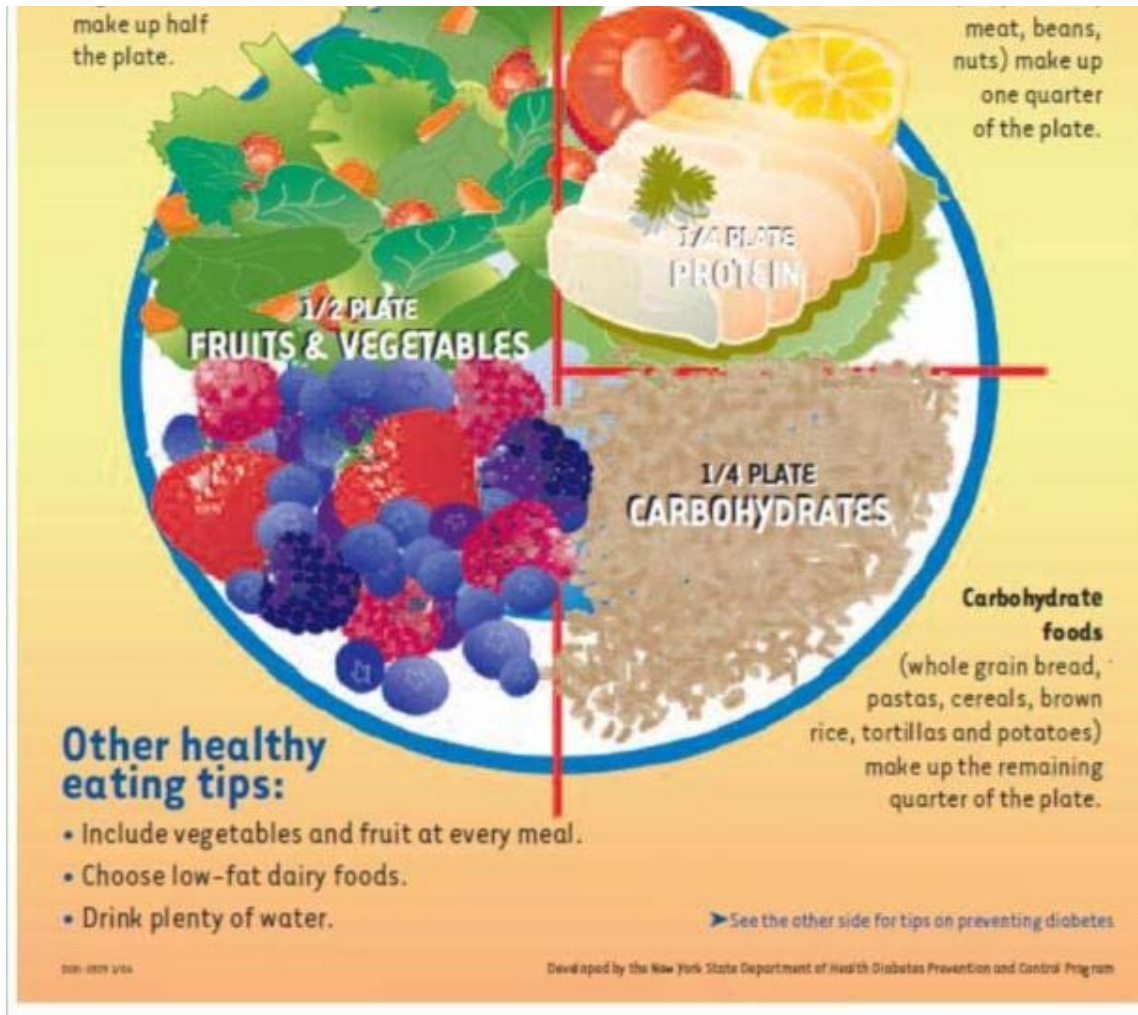
Healthy meals for the holiday season...

Need some inspiration in the kitchen this month?

[Healthy, Thrifty Holiday Menus](#)

[Healthy Meals with Kid Appeal](#)





4-H News

2015 4-H Tractor and Machinery Operation Certification Class

[Registration form for the next class is now available here.](#)

Registration deadline is Monday, January 5, 2015.

National Ag Day Essay Contest

The Agriculture Council of America (ACA) calls on ninth- to 12th-grade students to submit an original, 450-word essay or a two-minute video essay about the importance of agriculture. This year's theme is



"Agriculture: Sustaining Future Generations " The national written essay winner receives a \$1,000 prize and round-trip ticket to Washington, D.C., for recognition during the Celebration of Ag Dinner held March 18 at Whitten Patio at the USDA. During dinner, the winner will have the opportunity to read the winning essay as well as join with industry representatives, members of Congress, federal agency representatives,

media and other friends in a festive ag celebration. The video essay winner wins a \$1,000 prize, and the winning video will play during the Celebration of Ag Dinner. The deadline for submission is January 30, 2015. For more information and rules visit

<http://www.agday.org/media/pr6.php>

Cheese Sale

Cheese sale order money is due to the CCE-Steuben County office by December 8!

January 1st deadline:

Ownership for Market Beef and Dairy Steers

January 5 deadlines:

Members must be re-enrolled to participate in the 2014 Steuben County Fair
Market Beef and Dairy Steer ID Forms due to CCE-Steuben office

9th annual Southern Tier Outdoor Show...Oct 10-11, 2015

This past October's Southern Tier Outdoor Show, coordinated by Cornell Cooperative Extension of Steuben County, was again the biggest show to date. With around 140 exhibitors and about 6,500 visitors, it broke the records of the previous seven shows.

As the show grows, it requires more and more planning. We are expanding our planning committee in 2015 and could use YOU! If you would like to learn more about how you

could be involved, please contact Carla at crd24@cornell.edu or 607-583-3224.

We are currently in talks with potential new attractions for 2015. Stay tuned to our [website](#) and our [facebook page](#) for the latest details!!! Now is the time to book your booth for the next show! [Visit here for an application.](#)





What's Going On Around the Community...

Spirit of Christmas Friday, December 5, 2014 6:00-8:00 p.m.

Pulteney Square, Bath, NY

There will be Santa and Mrs Claus, Free Food-Chili, Donuts, Popcorn, Cider and Hot Chocolate, Food and Craft Vendors, Church Nativity Scenes and plenty of entertainment and live music. The Steuben County 4-H club, Howard Hillbillies, will have a table at the event - be sure to look for them!

[Follow them on Facebook for the latest details!](#)

Business Planning Workshop

Wednesday December 3, 2014 8:30-10:00 a.m.

at Corning Community College's

Business Development Center

24 Denison Parkway West. Room 111

Corning, NY

Presented by Corning Community College's Small Business Development Center

This workshop is designed for the person who is thinking about starting their own small business or an existing business owner seeking financing. Topics discussed will be Federal and State legal requirements and how to write a business plan. There will be ample time for questions and answers.

Pre-registration is required by December 1. No Registration Fee. Contact the SBDC at:

607-937-6861, sbdc@corning-cc.edu.

Annual Light of Hope brunch fundraising event

The Annual Light of Hope brunch will be held on December 14, 2014, at Castel Grisch Winery and Restaurant on Irelandville Rd., Watkins Glen, N.Y., reservations are available from 11:00 a.m. to 3:00 p.m. All proceeds benefit CASA of the Southern Tier. Tickets are \$20 per person, \$10 per child, and may be purchased by calling (607) 936-CASA or emailing info@casasoutherntier.org. Table and time reservations must be made in advance. Call (607) 535-9614.

"The brunch is wonderful event that puts you in the holiday spirit and helps abused children at the same time," said Amy Miller-Plumley-, Executive Director of CASA of the Southern Tier. "People relax for an hour, enjoy great food, a great view with family and friends. Our CASA kids and volunteers deal with tough, situations on a daily basis. The brunch is a terrific way to support abused and neglected children in our tri-county area and turn a life of hurt into one of hope."

For more information, call Amy Miller-Plumley at (607) 936-CASA (2272) or at www.casasoutherniter.org.

CASA is a nonprofit organization founded on the belief that the health, safety, and spirit of a child should be the primary concern when families are in crisis. To that end, it is dedicated to providing every abused and neglected child in the court system with a consistent and caring advocate - a CASA a court appointed special advocate. For more information on CASA, visit www.casasoutherniter.org.

The Cornell Cooperative Extension educational system enables people to improve their lives and communities through partnerships that put experience and research knowledge to work.

Carla Dawejko

Public Affairs Coordinator

Cornell Cooperative Extension of Steuben County

Cornell University Cooperative Extension provides equal program and employment opportunities. CCE does not endorse or recommend any specific product or service. This newsletter is solely intended to educate consumers about their choices.

Scan this code to visit our website:



[Forward email](#)



This email was sent to crd24@cornell.edu by crd24@cornell.edu | [Update Profile/Email Address](#) | Rapid removal with [SafeUnsubscribe™](#) | [Privacy Policy](#).



Cornell Cooperative Extension of Steuben County | 3 E Pulteney Square | Bath | NY | 18840