

GENERAL DISQUALIFICATIONS AND DEFECTS IN POULTRY

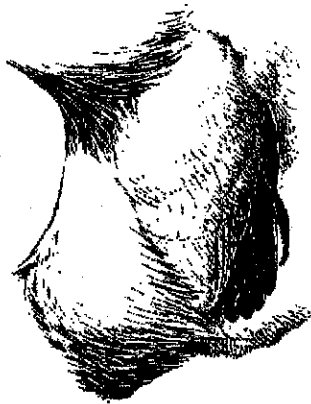
In judging a class in which disqualifications and defects are considered, look over each section of the bird carefully. A good order in which to look over the bird is: legs and toes; back; breast; wings; head and neck; be sure to spread open both wings, tail and body feathers.

A complete description of all disqualifications and defects found in poultry is given in the AMERICAN STANDARD OF PERFECTION. The most common **Disqualifications** are:

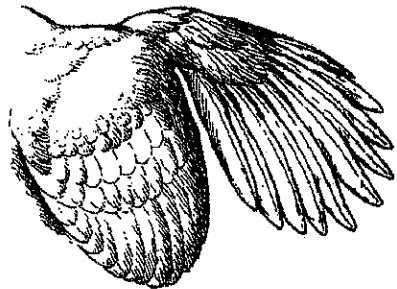
1. Stubs or feathers on shanks or between toes.
2. Leg and toe color foreign to breed
3. Decidedly squirrel tailed or decided wry tail.
4. Slipped wing, split wing or clipped wing.
5. Twisted main feather in wing or tail.
6. Entire absence of mail tail feathers.
7. Side sprig on single comb.
8. Split comb.
9. Comb foreign to breed.
10. Rose comb falling to one side.
11. Lopped single comb except in female of the Mediterranean class and the New Hampshire breed.
12. Absence of spike on rose comb varieties.
13. Crooked backs.
14. Deformed beaks.
15. Bowed legs or knock-kneed (matter of degree).
16. Duck-foot.
17. Enamel white in the earlobe of American or Asiatic varieties.
18. Entire absence of spurs on cock birds.
19. Brown or buff quills of primary or secondaries in white varieties.
20. Foreign color in any part of plumage of white varieties except slight gray ticking.
21. One or more entirely white feathers in outer plumage of Rhode Island Reds or New Hampshires.
22. Two or more solid black primaries, secondaries or main tail feathers in Barred Plymouth Rocks.
23. Red or Yellow in any part of the plumage of the Barred Plymouth Rocks.
24. Red covering more than 1/3 of the surface of earlobes in cockerels pr pullets in White Leghorns, and more than 1/2 in cocks and hens.
25. Faking in any manner.
26. In all breeds having weight clauses, except leghorns, Anaconas, Bantams, and turkeys, any specimen falling more than two pounds below standard weight. In Leghorns and Anconas males falling more than 1-1/2 pounds and females more than one pound under standard weight.

A few of the most common **Defects / Faults** found in poultry are:

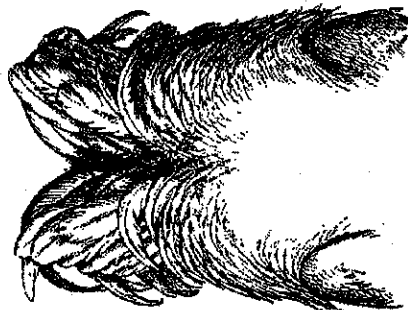
1. Scaly legs.
2. Frosted (frozen) combs.
3. Thumb-marks on comb or wattles.
4. Blindness of one eye, injured or missing eye.
5. Missing or broken feathers.
6. Crooked toes.
7. Crooked breast bone (economically important).
8. Crowhead.
9. Creaminess in white varieties (not to be confused with the rich color in the plumage of pullets about to come into production).
10. Gray specks in white varieties.
11. Poor barring.
12. Black feathers in body of Barred Plymouth Rocks.
13. Smut in undercolor of Rhode Island Reds.
14. Light undercolor of Rhode Island Reds
15. Single combs having more or less than the required number of points.



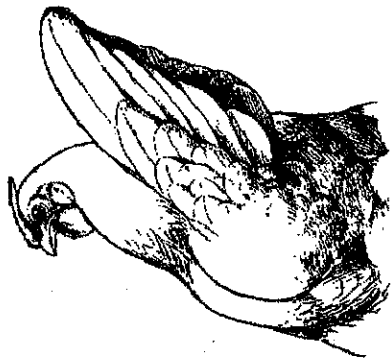
Slipped wing and twisted feather



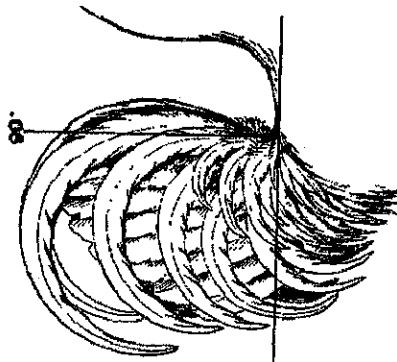
Split wing



Split tail



Wry tail



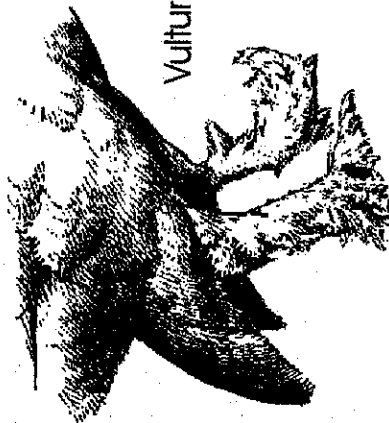
Squirrel Tail



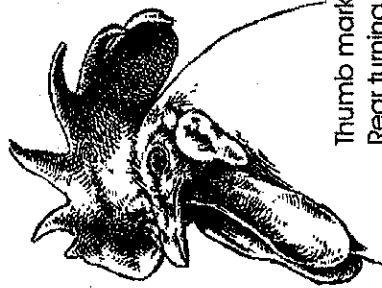
Lopped Rose Comb



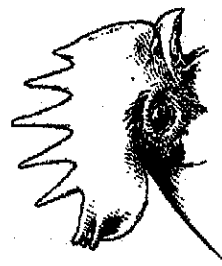
Lopped Single Comb



Vulture hocks



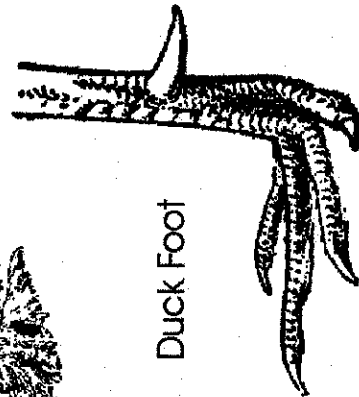
Thumb marks in comb
Rear turning to one side



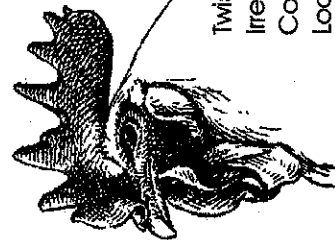
Side Sprigs



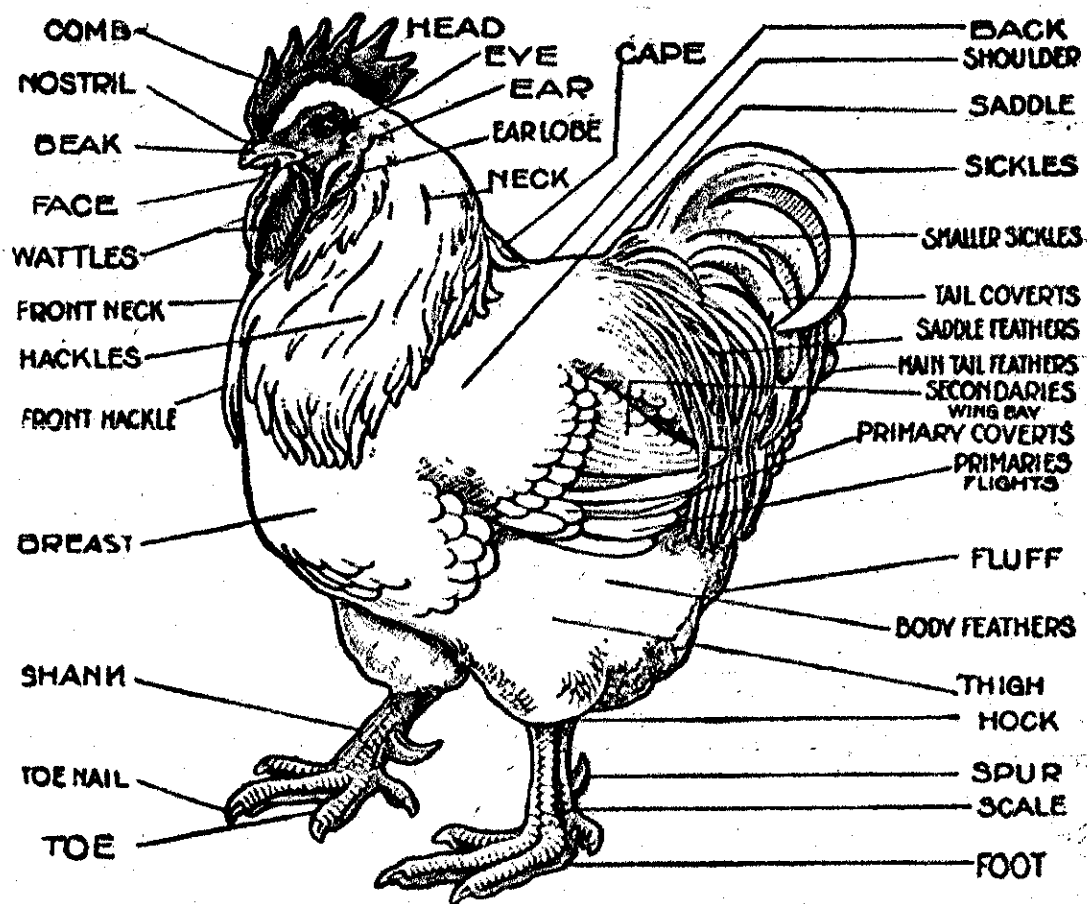
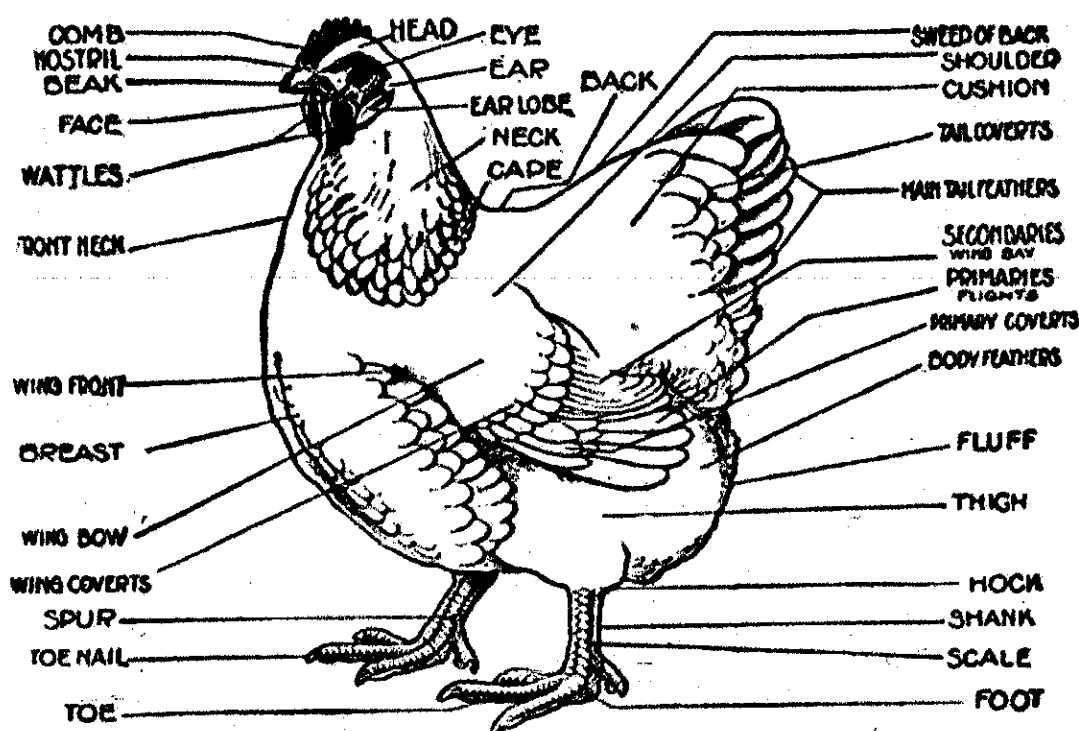
Split Comb



Duck Foot



Twisted comb in front
Irregular serration of comb
Coarse, wrinkled wattles
Loosely-fitted lobes



NOMENCLATURE OF SHANKS AND TOES

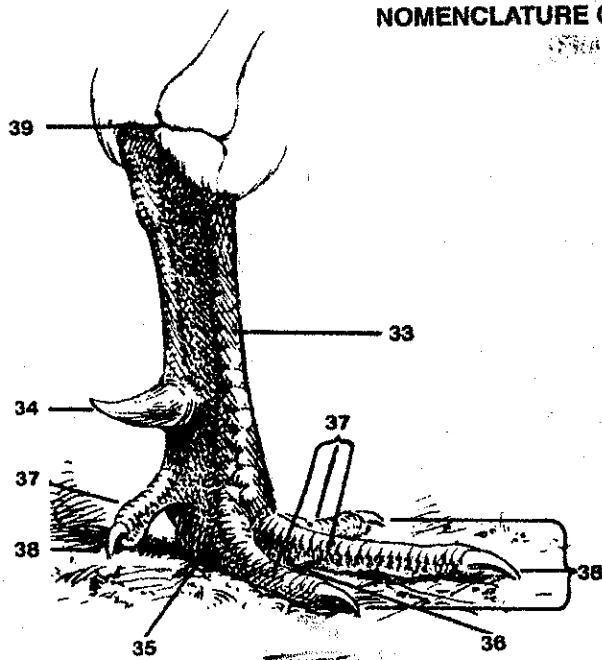


Figure 5
MALE

- 33. Shank
- 34. Spur
- 35. Foot
- 36. Web
- 37-37. Toes
- 38-38. Toe-Nails
- 39. Middle of Hock Joint

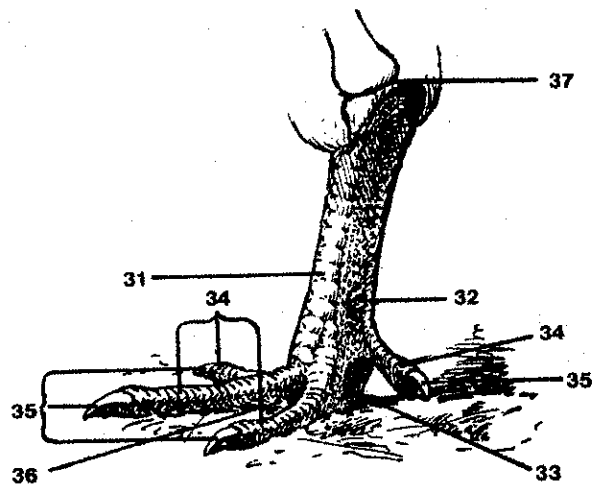


Figure 6
FEMALE

- 31. Shank
- 32. Spur
- 33. Foot
- 34-34 Toes
- 35-35. Toe-Nails
- 36. Web
- 37. Middle of Hock Joint

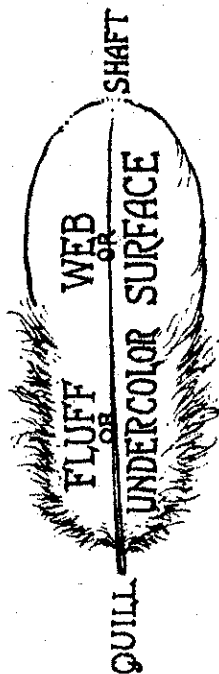


Figure 26
Sections of
a feather.

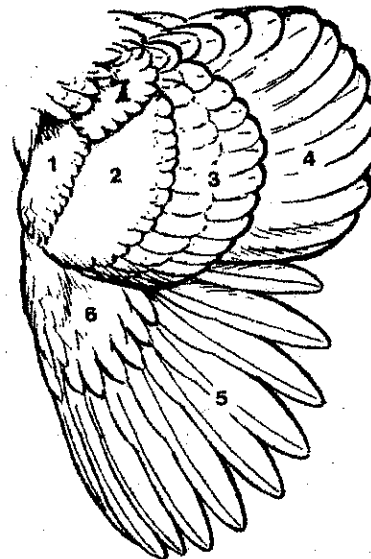


Figure 37
Parts of Wing
1, Front. 2, Bow. 3, Bar.
4, Secondary. 5, Primaries.
6, Primary Coverts.
7, Wing Shoulder.

DIFFERENT TYPES OF STANDARD MALE COMBS



Figure 12
Single Comb
 1, Base; 2, Point; 3, Blade.
 For ideal types see illustrations of breeds and varieties.

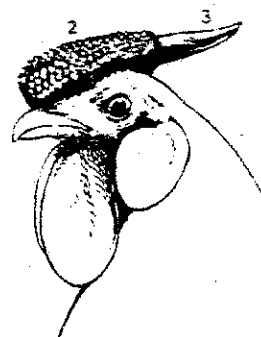


Figure 13
Rose Comb
 1, Base; 2, Rounded Points; 3, Spike.
 For ideal types see illustrations of breeds and varieties.



Figure 14
Pea Comb
 For ideal types see illustrations of breeds and varieties.



Figure 15
Sultans Head, Male (Ideal)
 1-1, V-shaped Comb; 2, Crest; 3, Muffs; 4, Beard.



Figure 16
Cushion-Comb (Ideal)



Figure 17
Buttercup Comb (Ideal)



Figure 18
Strawberry Comb (Ideal)



Figure 19
Rose Comb
 Standard type as in Wyandotte males.



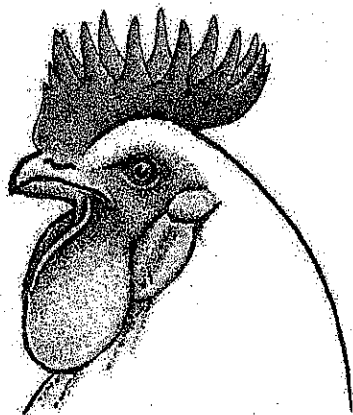
Figure 20
Single Comb
 Front view, medium size, male comb. Showing strong base, firm and even position on head.



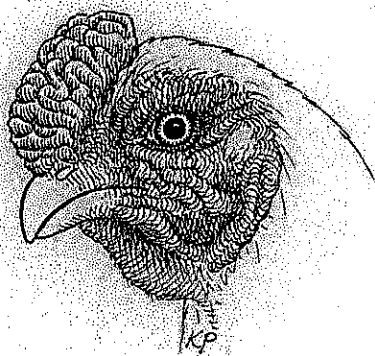
Figure 21
Single Comb
 Standard type as in Plymouth Rock males.



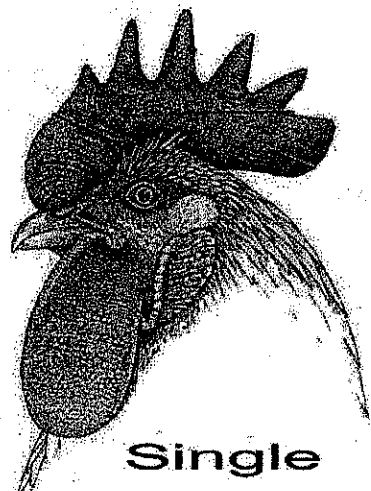
COMBS STUDY SHEET



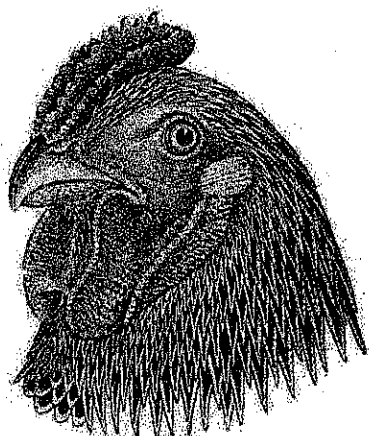
Buttercup



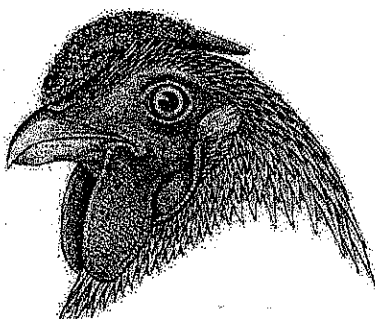
Chrysanthemum



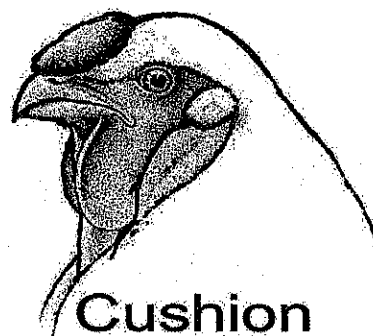
Single



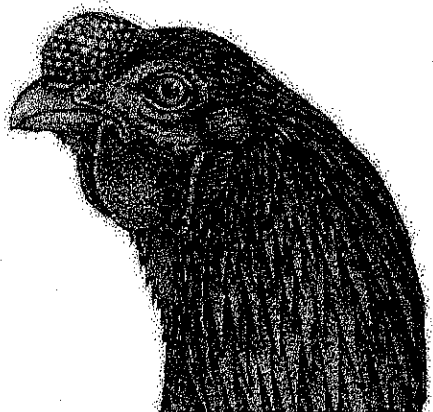
Pea



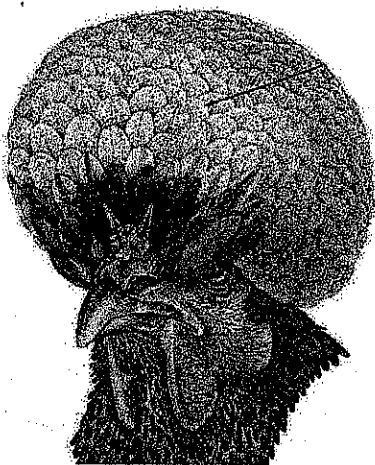
Rosecomb



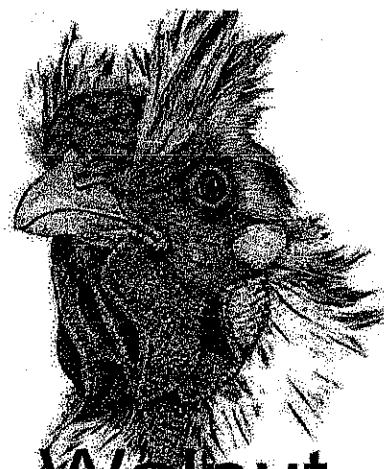
Cushion



Strawberry



V



Walnut

Parts of a Wing

