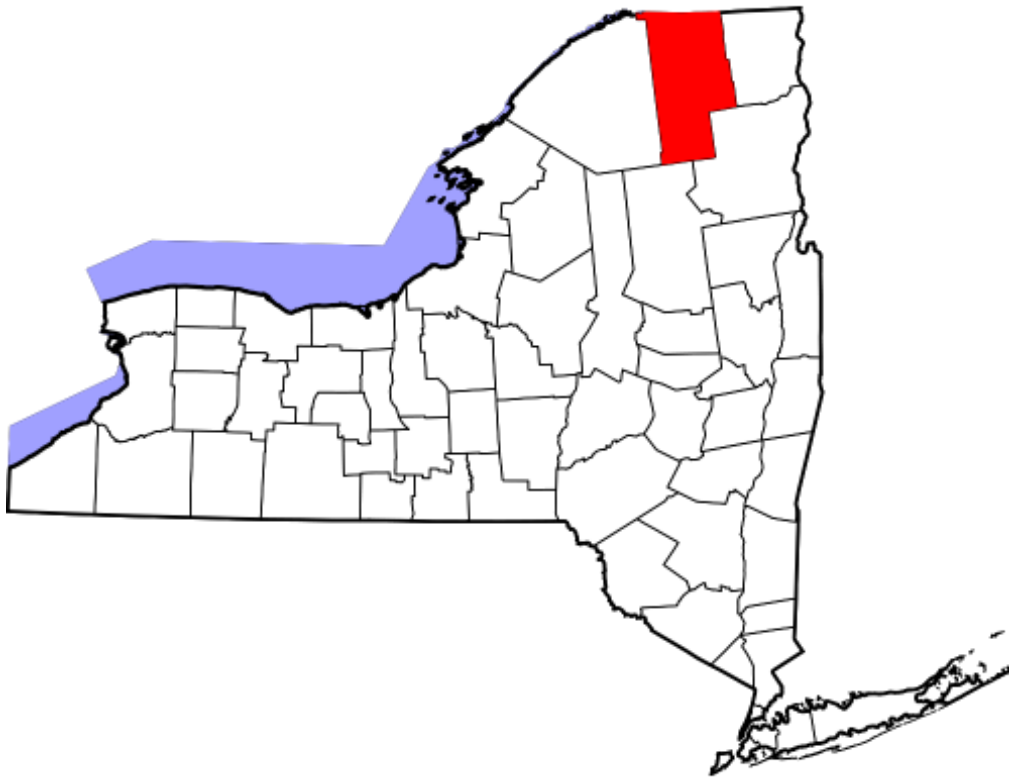


# Annual Report 2023



## Cornell Cooperative Extension Franklin County

355 West Main Street  
Malone, NY 12953  
(518) 483-7403

[franklin@cornell.edu](mailto:franklin@cornell.edu)

[franklin.cce.cornell.edu](http://franklin.cce.cornell.edu)

# Cornell Cooperative Extension Franklin County

## Table of Contents

Letter from the Executive Director	2
Agriculture	3-4
Family Health & Well-Being	5
Farm to School Program	6
 4-H Youth Development	7
After School	8
 4-H Camp Overlook	9-11
Connections & Grants	12
Community & Economic Development	13
Impact Statement	14
CCE Staff	15
Board of Directors & NNY Regional Specialists	16
Financials	17
Annual Awards & Camp Overlook 2023	18
Sample of Workshops/ Programs	19
CCE Overview	20

Photos taken by CCE staff, unless otherwise noted, and are property of CCE Franklin County

## A Letter from the CCE Executive Director:

On behalf of the Cornell Cooperative Extension (CCE) Franklin County staff, members of the Board of Directors, and the program advisors, please accept our 2023 Program Annual Report and Financial Overview.



In January 2023, the Association completed a comprehensive action plan which guided our work during this past year. **By all measures, 2023 was the most successful year in the history of CCE Franklin County.** With a record number of

events, programs, and grant funds received, we reached an unprecedented number of the county's youth, seniors, farmers, small businesses, and municipalities. The staff at CCE continues to create positive changes in the lives of our citizens by offering informal education and learning activities to county residents in rural town centers and villages.

### 2023 Association Action Plan

- **Expand Programming in Focus Areas**
- **Develop a More Robust Budget (grants, fundraising)**
- **Get Fully Staffed**
- **Expand Partnerships and Collaborations**

In 2023 CCE Franklin continued its mission by taking knowledge gained through research and bringing it directly to the residents of Franklin County and beyond. We continue to work to address agriculture needs and bring resources to local farmers. Consumer education as it relates to agriculture is essential to not only support our local farmers but also our local economy. One of our largest grants received will expand efforts to support Farm to School initiatives that connect local producers to local schools while educating youth on food systems.

Nutrition education and exercise programs for youth and seniors have been held around the county with resounding support from schools and senior centers. Camp Overlook had over 850 campers and was at capacity each week during summer 2023. Our Positive Youth Development efforts reached thousands of youth through 4-H, STEM, and agriculture programs and our after school enrichment efforts were enhanced with new 4-H inspired programming.

In 2024, we plan to expand and enhance current programs, develop new innovative programs and seek new partnerships and collaborations to serve Franklin County and its citizen's and youth. Cornell Cooperative Extension in Franklin County continues to change, grow and meet the needs of our county's citizens.

Thank you for your support.

Sincerely,

*Cornell Cooperative Extension is an employer and educator recognized for valuing AA/EEO, Protected Veterans, and Individuals with Disabilities and provides equal program and employment opportunities.*

# Agriculture



This year CCE Franklin was able to expand Agriculture staffing with the hiring of Laura Trudell as Horticulture Educator and Greenhouse Manager. As a part of the horticulture program, CCE Franklin collaborated with JCEO to renovate and increase utilization of the JCEO greenhouses in Malone. This summer the growing potential of the greenhouses was maximized to increase availability of fresh produce to JCEO clients and the Mobile Farmers Market from June to September. During that time the greenhouse also provided produce that went directly to the JCEO Food Pantry. The protected environment of the greenhouses extended the harvest season until the end of October. Overall, the greenhouses have produced over 1000lbs of food, and we are looking forward to an even more productive season next year.



## Harvest—July to October

Tomatoes 500 lbs.	Melons 62 lbs.
Zucchini 47 lbs.	Beans 153 lbs.
Cucumbers 124 lbs.	Peas 46 lbs.
Peppers 90 lbs.	Carrots 40 lbs.
Squash 14 lbs.	Radishes 13 lbs.



## Community Garden Project Moira Maple Leaf Housing

*"All the vegetable plants did really well. The residents were very pleased with all of the produce and everything went to use. This project gave the residents an opportunity to get outside and grow their own food"*

*~ Robert Gary, Resident*





# Agriculture

**EMS and First Responders participated in a Manure Pit Rescue & Safety Training. This was held in collaboration with Franklin County Farm Bureau, CCE Franklin County, and NECAS.**



**Produce started in the raised beds at the JCEO Greenhouses. Each bed is 3' x 50' in size and will produce several hundred pounds of vegetables and other produce throughout the season for JCEO and their clients.**

**Cornell Cooperative Extension, Franklin County has held several workshops and trainings throughout 2023. Pictured here is a photo from a Raspberry Pruning workshop.**





# Family, Health & Well-Being



*Building Bones  
Exercise Program*

Family, in all its diverse forms, is the backbone of a healthy society. The mission of this arm of Extension is to improve the well-being of the family through strength-based programs, nutrition education, and community engagement that educates, influences public policy, and helps families put evidence-based information to work in their lives.

Our programs include: Building Bones Exercise Program; SHINE—Senior Health Improvement and Nutrition Education; and Walmart Healthy Living.

SHINE, Senior Health Improvement and Nutrition Education, focuses on providing nutrition education to older adults throughout Franklin, St. Lawrence and Clinton Counties. The primary sites for SHINE workshops are congregate meal sites, public housing units, and adult centers. Nutrition Educators have been tailoring the curriculum to fit the needs of the community, reaching out to dozens of sites throughout the North Country region (Franklin, St. Lawrence, Clinton County and Akwesasne) to provide in-person workshops. CCE Franklin provided the Eat Healthy Be Active Community Workshop Series in seven locations and the Walk with Ease Program to three sites for a total of 82 workshops.



The SHINE program reaches out to older adults through several channels; the SNAP-Ed Hotline, container gardens, resource fairs and food box distribution programs. Educators worked with Bonesteel's gardening

center to provide 250 basil, thyme, and oregano herb container gardens to older adults. In addition to the container gardens, the SHINE program aimed to provide older adults with additional food to combat the growing food insecurity throughout the North Country. In the winter months, the SHINE program collaborated with the Office for the Aging of Franklin county to provide winter food boxes to 400 older adults. In the late summer, McKane Farms and Moore's farm contributed over 1,000 ears of fresh corn on the cob that was distributed to over 450 older adults. As the new grant year for SHINE started in October, the SHINE program was working with Northern Orchards in Peru to provide apples and pears to older adults.

## Areas Served

### Franklin County:

- Malone Adult Center
- Saranac Lake Adult Center
- Tupper Lake Adult Center
- Saint Regis Falls Adult Center
- Brushton-Moira Adult Center
- Burke Adult Center
- Fort Covington Adult Center

### Clinton County:

- Mountain Top Housing
- Atlas Heights
- Northern Housing

### St. Lawrence County:

- Potsdam Midtown Apartments
- Canton Riverside Housing
- Sweetflag Estates

### St Regis Mohawk Sites:

- St. Regis Mohawk Tribe Senior Center

**SHINE** workshops take place in adult centers, congregate meal sites, and public housing units and include a healthy snack, discussion, nutrition education, and light physical activity.

# Farm To School Program



In May 2023, Cornell Cooperative Extension of Franklin County was awarded a \$100,000 New York State Department of Agriculture and Markets Farm to School grant. CCE Franklin partnered with three school districts in Franklin County on the grant: Brushton-Moira, Salmon River, and St. Regis Falls. These school districts represent 37% of the student body of Franklin County. Each school district is committed to achieving 30% New York State products in their school lunch programs by the end of the grant contract.



## ***Farm to School Coordinator***

The grant primarily funds our Farm to School Coordinator, Katie Remmers, who will oversee the program development and implementation to increase the volume and variety of New York State farm products procured by schools. Katie will address logistical and training needs of both school districts and local farmers/distributors to create a seamless self-sustaining system of food procurement. She will also provide educational opportunities for students to increase their agricultural knowledge. Katie joined CCE Franklin in October 2023, and brings a wealth of knowledge of sustainable food systems and education. Katie holds a master's degree in Sustainable Agriculture and a bachelor's degree in Education.

## ***Farm to School Impact***

The collaborative partnership between Cornell Cooperative Extension of Franklin County and three school districts in Franklin County will build upon growing regional farm to school momentum. The program is a win-win for students and farmers in Franklin County. Students will be positively impacted through exposure to increased volume and variety of local foods. Farmers will benefit from the Franklin County Farm to School Program through expanded markets and increased student interest in agriculture. The project is expected to increase purchases of local farm products by \$90,000-\$94,500 annually.



### **Schools Served:**



**Brushton-Moira CSD**



**Salmon River CSD**



**St. Regis Falls CSD**





# 4-H Youth Development

Learn  
By  
Doing



4-H Member picking her blue ribbon vegetables for the Franklin county Fair

## 4-H Youth Development

"To Make the Best Better" 4-H is a leader in the research and practice of positive youth development and the largest youth organization in the world. 4-H empowers youth to reach their full potential by working with and learning skills from trained, caring adult mentors and educators. The phrase "Learn by Doing" is the educational philosophy of the 4-H program.

## 4-H Opportunities

- ✓ County, District and State Public Speaking Events
- ✓ 3-Day Horse, Dairy, Sheep and Goat Camps

- ✓ Traditional 4-H Community Clubs
- ✓ Leadership Opportunities that are regional and statewide- Career Ex, Cornell University and STARR
- ✓ STEM Programs
- ✓ Ag Literacy
- ✓ Franklin County Fair
- ✓ Life Skills -Sewing, Food Preparation and Nutrition, Wilderness Programs
- ✓ Community Service Programs
- ✓ School Enrichment Programs
- ✓ Embryology, Environmental Programs
- ✓ Team Building Skills
- ✓ 4-H "Takes You Places". Explore American History

## 4-H Pledge:

*I PLEDGE my head to clearer thinking, my heart to greater loyalty, my hands to larger service, my health to better living, for my club, my community my county, and my world.*



4-H youth creativity in the block pit at the Fair



Youth goat show at the Fair



4-H Horse Camp Lessons

## Conservation Field Days

4-H annually reaches between 450 and 600 Franklin County 4<sup>th</sup> grade students at Conservation Field Days held at 4-H Camp Overlook. 4-H brings Environmental Field Days to over 100 2<sup>nd</sup> Grade students from several area schools.





# 4-H Youth Development

Learn  
By  
Doing

## 4-H After-School Programs

The 2022-23 After School Programs finished another successful year at both Panther Hour (Brushton-Moira Central School) and Bulldog Hour (Chateaugay Central School). Each program provided after school childcare to students ages 5-12. The programs provided a safe, enriching space for children based on the 4-H Positive Youth Development Model. After School Programs had a year-end total attendance of 5,972 (3,572 Panther/2,400 Bulldog). The programs had a total average daily attendance of 35 students (21 Panther/14 Bulldog).

The 2023-24 school year brought exciting changes to CCE Franklin After School Programs. CCE Franklin implemented a new management software called ProCare to modernize business practices. More importantly, programs now include a new enrichment curriculum. Rotating monthly topics are brought to life using weekly themes based on 4-H curriculum of STEM/STEAM, agriculture, civic engagement, and healthy living. Over 1,000 students have attended After School Programs during the 2023-24 school year.

### Current After-School Programs

Brushton-Moira Central



**Panther Hour**

*Panther Hour*

Chateaugay Central



**Bulldog Hour**

*Bulldog Hour*

### Monthly Curriculum Topics

September: Science Fair  
October: Colors of Fall  
November: Healthy Harvest  
December: Giving Back  
January: Winter Wonderland  
February: Hearts and Stars  
March: Visual Arts  
April: Around the World  
May: My Backyard  
June: Summer Fun!

### Weekly 4-H Curriculum Themes:

Week 1: STEM/STEAM  
Week 2: Agriculture  
Week 3: Civic Engagement  
Week 4: Healthy Living







# 4-H Camp Overlook



4-H Camp Overlook is a traditional, six-day, five-night residential camp located on Indian and Mountain View Lakes in the beautiful Adirondack Mountains. The camp, owned by Cornell Cooperative Extension of Franklin and St. Lawrence Counties, is open to youth ages 6-19. 4-H Camp Overlook also offers a program for Cloverbuds, those between the ages of six and eight. Camp Overlook offers team building, leadership training and ropes course facilitation for groups year-round in our two heated facilities.

[www.4hcampoverlook.org](http://www.4hcampoverlook.org)



Instagram



facebook



## Summer 2023 Campers:

- 103 Clover Buddies
- 57 Clover Leafs
- 21 MAAPs Backpackers
- 679 Regular Session Campers
- Over 90 Scholarships Provided
- Over 80 Sponsorships Provided



## 2023 Camp Success

### Cloverleaf Program:

Throughout the years of running summer camps, we've paid close attention to the challenges our campers face. Last year, we took a significant step forward by bringing in a wellness director. This was in response to recognizing that taking care of the mental and emotional well-being of our campers is just as important as their physical health. What we discovered was quite eye-opening – for a lot of our campers, it was their first time away from home for more than just one night.

To tackle this issue, we introduced a new program at the camp called "Cloverleaf." This program was specially designed for campers aged 8 to 13 who had never spent more than a few days away from home. What makes Cloverleaf unique is that it packs all the fun and learning of a traditional week-long camp into a shorter 3-day experience. This way, our campers could step out of their comfort zones and challenge themselves in a safe and supportive environment.

The results were nothing short of fantastic. We had a total of 57 campers join the Cloverleaf program this year. Many



of them told us that they plan to come back for a full week next year. This success has shown us that we're on the right track in providing a great camp experience for kids, helping them grow, learn, and enjoy their time away from home.



# 4-H Camp Overlook



## 2021-2022 Counselor-In-Training (CIT) Curriculum Revamp (CHECK ON THIS)

In '21 & '22, 4-H Camp Overlook received funding from the Adirondack Foundation towards revamping our CIT Program. We have successfully rewritten all three levels over the last two years to focus on preparing this age group of campers for College and Career Readiness. In the past the CIT program's main focus has been to solely prepare campers for moving onto working at our facility. We believe in "making the best, better" and we know that helping prepare campers for work life beyond our camp is what is best for us to do!



## 2023 Year Round Numbers:

- 13 Rentals
- 12 School Groups with over 500 students attending
- PLUS...**
- 2 Family Camp Weekends

## 2023 M.A.A.P.s Curriculum Revamp

In the years 2022 and 2023, 4H Camp Overlook has been working closely with SUNY Potsdam to enhance our M.A.A.P.s (Mountaineers, Alpine Adventures, and Pathfinders) program. Together, we've revamped the content and structure of these programs. This revamp involves integrating leadership training and educational components as well as incorporating our CIT (Counselor-in-Training) philosophy into these curriculums.

Additionally, we've expanded our horizons by exploring new wilderness areas where our campers can challenge and develop their skills. Our core belief is in the mantra of "making the best, better" within an outdoor setting. We are committed to equipping our campers with the skills and knowledge they need not only for their time at camp but also to thrive in life beyond our camp.

This initiative represents our ongoing commitment to provide a well-rounded and enriching outdoor education experience for our campers, ensuring they are well-prepared for their future endeavors.





A special thank you to our 4-H Camp Overlook  
Alumni for donations to replace the firepit  
seating and fabricate a new fire ring.



# Connections - Partnerships - Grants

## MOU's - Partnerships - Collaborations

JCEO	Chateaugay Central School	Salmon River Central School
Boralex	Paul Smith's VIC	St. Regis Falls Central School
Malone Telegram	Malone YMCA	Jefferson County CCE
WILD Center	United Way	Clinton County CCE
St. Lawrence County CCE	Essex County CCE	Lewis County CCE
FEH BOCES	Akwesasne	Adirondack Frontier
Brushton-Moira Central School	Adirondack for Kids	

## Grants Awarded (> \$250,000 total)

- Community Garden Grant – Maple Leaf Housing in Moira
- Farm to School Grant with Brushton, Chateaugay, Salmon River
- Alcoa Grant for WOW Trip
- Association of Science and Technology Centers (ASTC) partnership with the WILD Center
- Adirondack for Kids Grant for new cabin at Camp Overlook
- Stewart's 4-H Grant
- United Way Camp Overlook Scholarships Grant
- 4-H horse program from NYS Agriculture and Horse Breeders Development
- Ellen Lea Paine Memorial Nature Fund from Adirondack Garden Club



## Local Air Quality Monitoring

In partnership with Cornell University faculty, CCE Franklin established a real-time air quality monitoring system.

go to: [purpleair.com](https://purpleair.com) or [airnow.gov](https://airnow.gov)



# Community & Economic Development



CCE helps foster an economic climate that supports and promotes the expansion of agricultural businesses within Franklin County. We assist agribusinesses to help ensure agricultural industry viability by exploring ways to enhance sales through direct marketing or developing value-added products that create employment opportunities. Diversification increases farm viability by increasing economic stability through reduced financial risk and a more stabilized farm income.

CCE Franklin utilizes resources such as specialists with Harvest New York and the Northern NY Regional Ag team as well as campus resources to disseminate knowledge that ranges from individualized, farm specific information, to that which pertains to the agriculture industry as a whole.

Harvest NY in collaboration with CCE continues to be instrumental in helping the St. Lawrence Valley Produce Auction move forward by providing producer trainings and workshop as well as marketing assistance.



CCE continues to provide public education and showcase the importance of Franklin County agriculture through events throughout the year such as celebration of June is Dairy Month and the Franklin County Farm Trail, a fall event.



## Harvest New York - Growing New York's Agriculture and Food Economy



Farm-Based Beverages



Local Foods



Urban Agriculture

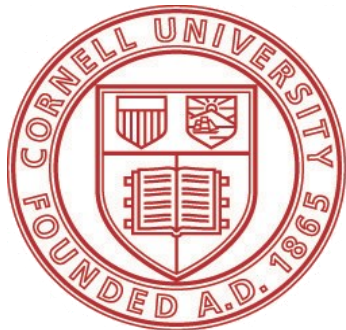


Livestock Processing & Marketing



Dairy Food Processing

Farm Strategic Planning



**Cornell Cooperative Extension  
Franklin County**

# 2023 Economic Impact Statement

## Established Programs

### **Agriculture**

CCE Franklin continues to work with commercial, established, part-time, small and beginning farmers who have agriculture business enterprises. We have developed relationship with local partners to bring business and industry education as well as resources and programs such as dairy farming, beef and livestock, crops, horticulture, agronomy, economic development and transitions.

Established and ongoing county initiatives include:

- Beginning Farmers Program
- Farm Trail
- Agriculture in the Classroom
- Wild Edibles

### **4-H Youth Development Programs**

Our Educators work with over 75 volunteers that help local youth learn civic responsibilities, create friendships and develop interests and talents to contribution to the growth and benefit of our Franklin County communities. 4-H is the largest youth program in the United States.

- 4-H currently has over 240 enrolled participants through clubs and independent members.
- 4-H programs throughout the year included: Public Presentations, Animal Science, Animal Symposium, Cloverbud, Cooking & Nutrition, Franklin County Fair Program, Adirondack Guides, Ag Literacy, STARR - State Teen Action Representative Retreat, Career Explorations, Wilderness Explorations, STEM Fair, Wild Edibles, Environmental programs, Citizenship, W.O.W 2022, Conservation Field Days, Tech Changemakers
- Interaction ranges from local, county and state-wide youth engagement Animal Science instructional camps for dairy, beef, goat, sheep and horse

### **4-H Afterschool Programming**

- After school enrichment program partners with Chateaugay Central & Brushton - Moira Central School districts, serving over 100 students
- Provides extra help with school work, complete STEM projects & experiments
- Promotes nutrition education, physical fitness activities and team building
- Meets rural community need for after school care

### **Farm To School**

- Local foods purchased, promoted and served in school cafeterias
- Students gain knowledge related to local foods, nutrition and agriculture
- Students engage in hands-on experiential learning through gardening
- Promotes economic development, public health, community engagement

### **Family, Health & Well-Being**

- Senior Health Improvement and Nutrition Education (formerly known as SHINE) focus is on providing nutrition education to older adults through SNAP-Ed
- Building Bones is a free exercise program open to all over 50

## **Why Cornell Cooperative is a Cost Efficient Organization:**

- Our program educators and team leaders work directly with over 12,000 residents each year (adults and youth).
- Through workshops, fairs, news outlets, media and publications (print and electronic), CCE educates over 350,000 people that live, work, and spend their money in Franklin County.
- Our employee benefits are paid by Cornell University totaling \$240,767.
- Cornell provides us with many services including payroll and personnel administration, web-based staff development, and other program support.
- Cornell's educational programs are NY State certified and are not duplicated by other agencies.
- We partner with local agencies to provide programs. Examples are NYS Office of the Aging, United Way of the Adirondacks, Paul Smith's VIC, and Malone YMCA.
- Extension's curriculum is research based from Cornell University and other Land Grant Universities.



# Staff



## Patricia Banker

4-H Program Educator  
(518) 483-7403  
[pab21@cornell.edu](mailto:pab21@cornell.edu)  
4-H Youth, Food & Nutrition, Family, Health & Well-Being



## Katie Remmers

Farm to School Coordinator  
518-483-7403  
[kjr66@cornell.edu](mailto:kjr66@cornell.edu)  
Agriculture, Food & Nutrition, Gardening & Grounds



## Mikayla Foster

4-H Educator  
518-483-7403  
[mjf333@cornell.edu](mailto:mjf333@cornell.edu)  
4-H Youth



## Jacob Stiles

4-H Camp Overlook Subject Educator 1  
518-483-7403  
[jes585@cornell.edu](mailto:jes585@cornell.edu)  
4-H Youth, Energy, Environment, Family, Health & Well-Being



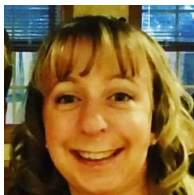
## Scott Gordon

Executive Director  
518-483-7403 ext. 7310  
[sag293@cornell.edu](mailto:sag293@cornell.edu)



## Kimberly Trombly

Association Team Leader  
518-483-7403  
[krt53@cornell.edu](mailto:krt53@cornell.edu)  
Agriculture, Administration, 4-H Youth, Food & Nutrition, Family, Health & Well-Being



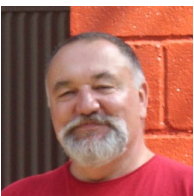
## Lindsey Kelly

Office Manager  
518-483-7403  
[lmk276@cornell.edu](mailto:lmk276@cornell.edu)  
Administration



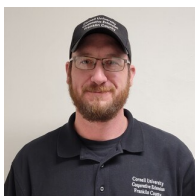
## Laura Trudell

Horticulture Educator and Greenhouse Manager  
518-483-7403  
[ljt92@cornell.edu](mailto:ljt92@cornell.edu)  
Environment, Gardening & Grounds



## Chris Lamica

4-H Camp Overlook Facilities Coordinator  
518-483-0381  
[cwl94@cornell.edu](mailto:cwl94@cornell.edu)  
Gardening & Grounds, 4-H Youth



## Justin Tucker

Agriculture Program Educator  
518-483-7403  
[jwt93@cornell.edu](mailto:jwt93@cornell.edu)  
Agriculture, 4-H Youth, Environment, Gardening & Grounds



## Laura Nicholson

Association Finance Manager  
(518) 483-7403  
[lan25@cornell.edu](mailto:lan25@cornell.edu)  
Administration



## Barry Webb

Assistant Camp Caretaker  
518-483-7403  
[bfw34@cornell.edu](mailto:bfw34@cornell.edu)  
4-H Youth, Gardening & Grounds



## Teresa Peterson-Martin

4-H Camp Overlook Registrar; Administrative Assistant  
(518) 483-4769  
[tap86@cornell.edu](mailto:tap86@cornell.edu)  
4-H Youth, Administration



## Ed Wilson

Administrative Assistant/ASP  
518-483-7403  
[ehw52@cornell.edu](mailto:ehw52@cornell.edu)

# 2023 Board of Directors

Connie Gerow	President, 1st Term
Tom Arnold	Vice President, 2nd Term
Rebecca Preve	Secretary, 1st Term
Errollyn Bradley-Bero	Treasurer, 1st Term
Justus Martin	County Legislative Representative
Kevin Leahy	1st Term
Benjamin “Benny” Herne	1st Term
Anne Slocum-McIlhenny	1st Term
David Moore	Incoming Member
Jacqueline Godin	Incoming Member
Star Bashaw	Incoming Member

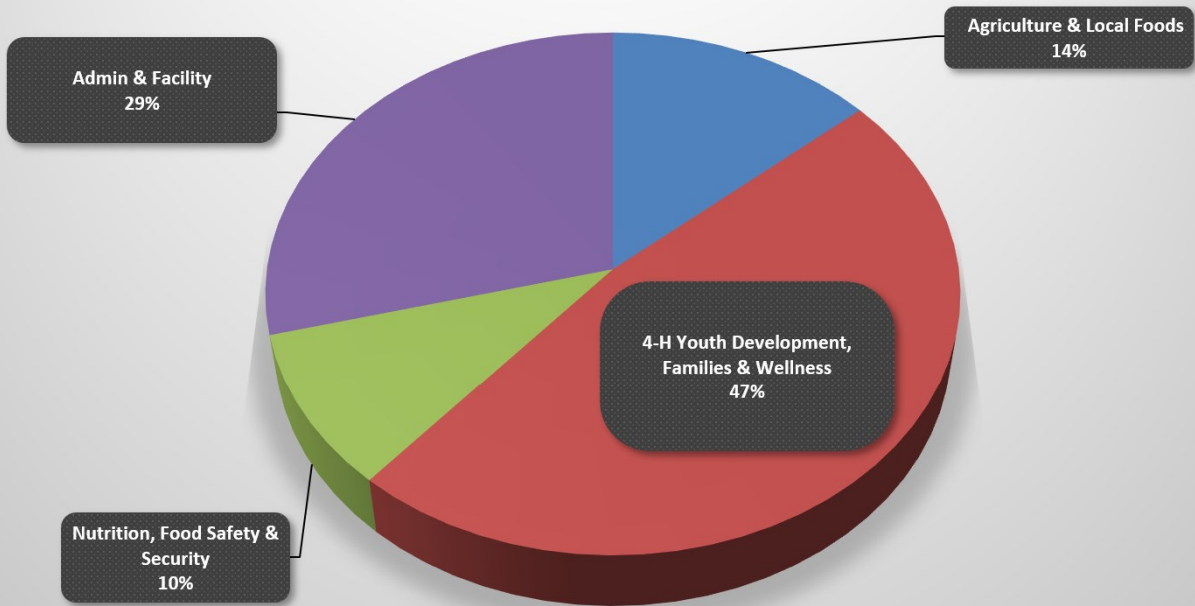
## NNY Regional Agriculture Specialists

Kitty O’Neil	Team Leader, Field Crops and Soils Specialist
Mike Hunter	Field Crops Specialist
Lindsay Ferlito	Dairy Management Specialist
Lindsey Pashow	Harvest NY—Ag Business Development and Marketing
Daniela Gonzalez	Dairy Management Specialist

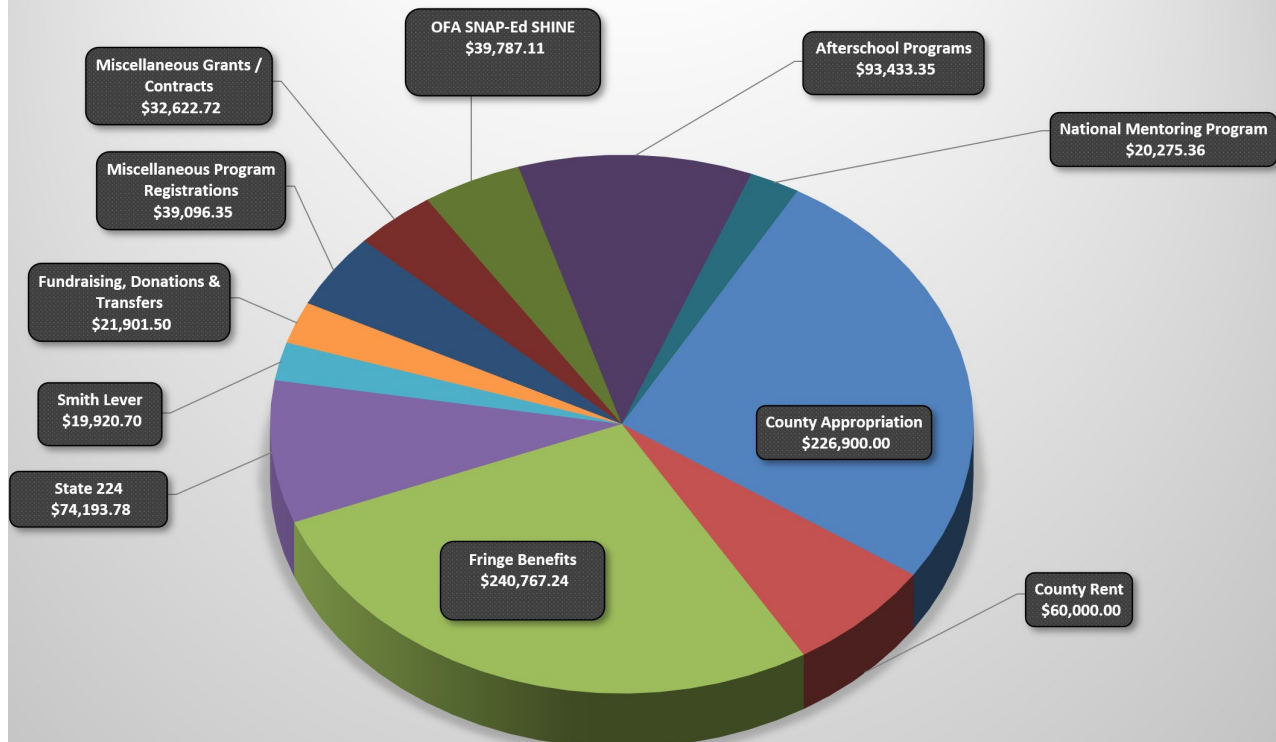


# Financial Report

## 2022 Allocation of Support Total Expenses \$868,898.11



## 2022 Sources of Funding



# 2023 Awards & Recognition

During the course of each year we recognize individuals or organizations in our community for their volunteerism, partnership or participation. We are fortunate to be part of a community who supports our positive impact on many levels.



**Friend of Extension**  
JCEO



**Volunteer of the Year**  
Jeff Spence



**Friend of 4-H**  
Donna Hastings

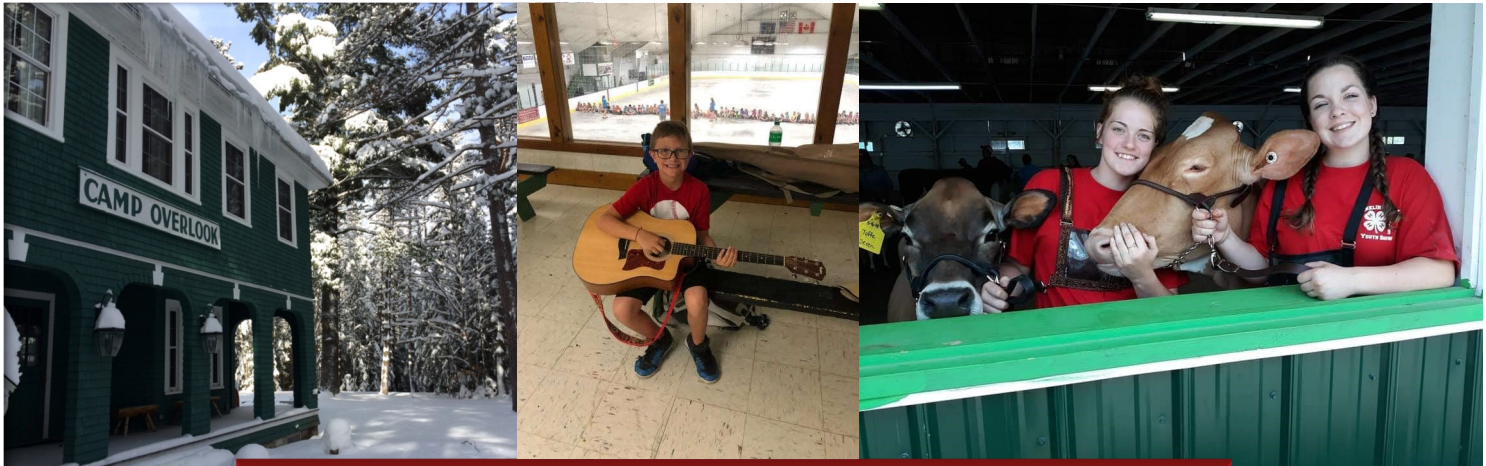




# Example of 2023 Programs Offered

- Ag Workshop - Sheep producers feeding and health
- Tupper Lake Winged Eagles 4-H Robotics Workshop
- 4-H Junk Drawer Robotics at VIC
- Winter 4-H Sewing Project
- 4-H WOW-Boston Bound Planning Meeting
- Eat Healthy and Be Active Workshops
- Ag Safety Awareness Workshops
- 4-H Bluebird House Make-n-Take
- Hay and Pasture School
- Ag Literacy Week
- Ag Fruit Tree and Raspberry Pruning Workshop
- Career Day Workshop – Brushton Moira Central
- Beekeeping Workshop
- Small Ruminant Workshop and Camp
- Multiple 4-H Club Meetings across County
- 4-H Riding Evaluations
- Manure Pit Rescue Safety Training
- Area 4-H Public Speaking Workshops
- Healthy Pasta from Vegetables Workshop
- District 4-H Public Speaking Presentations
- Soap Making Workshop
- Camp Overlook Cleanup
- 4-H Shooting Sports State Training
- 4-H Sewing Camp
- Dairy Day for Schools
- Conservation Field Days for Malone first graders
- 4-H Horse Camp
- 4-H Miniature Horse Clinic
- Wild Walks and Workshops at VIC
- 4-H Dairy and Beef Camp
- Progressive Ag Safety Day at Brushton Moira Central
- Eat Healthy Be Active workshops at Northern Housing (Champlain)
- Eat Healthy Be Active workshops at Saint Regis Mohawk Tribe Senior Center
- Eat Healthy Be Active workshops at Tupper Lake Adult Center
- Eat Healthy Be Active workshops at Midtown apartments (Potsdam)
- Eat Healthy Be Active workshops at Sweet Flag Estates (Massena)
- Walk with Ease workshops at Saint Regis Mohawk Tribe Senior Center
- Container Garden distribution throughout the region (Franklin, St. Lawrence, Clinton counties and Saint Regis Mohawk Tribe)
- Building Bones Exercise Program virtual and in-person
- Food Preservation Workshop pressure canning venison soup SRMT Rec Center
- Food Preservation Workshop pressure canning and boiling water bath canning SRMT Senior Center
- Cornell Lost Lady Bug Program to release endangered 9 Spot Lady Bugs
- Paul Smiths College "Groove, Move, Food" wild foods class
- Franklin County Fair Horse, Goat, Sheep, Alpaca, Dairy & Beef Cattle Shows
- 4-H Youth Building on Display. Youth had projects judged Face to Face
- 4-H Youth gaining work experience manning the Fair Clover Corner Eats food stand
- 4-H Youth, Families and Staff interacting with several thousand fair attendees over 12 days
- Wild Ed- Traditional Plant Use Workshop at Generations Park
- Master food Preservation Certification Workshop, Thompson Island 2 days
- New York 4-H Wild Ed training at Camp Shankitunk, Delhi for Train the Trainers
- Conservation Field Days for 4 & 5<sup>th</sup> grades at Camp Overlook 2 days
- Master Food Preservation Certification Workshop, SRMT Senior Center 2 days
- Goat Hike-Learn about 4-H and Goats, Paul Smiths VIC
- Wild Roots Workshop - VIC
- Daily educational activity offered at After School Programs
- 4/5<sup>th</sup> Grade Conservation Field Days
- Walk with Ease workshops at Arsenal Greens and Sawyer Avenue housing units
- Eat Healthy Be Active workshops at Saranac Lake Adult Center, 37 Riverside (Canton)
- McKane Farms (corn) Food Box Distribution site at the Brushton-Moira Adult Center, Fort Covington Adult Center, St. Regis Falls Adult Center
- Moore Farm (corn) Food box distribution site at the Adirondack Adult Center (Tupper Lake), Saranac Lake Adult Center, Malone Adult Center, Burke Adult Center
- Soil Health Workshop
- Visit to the Farrar Home (Malone) with kid goats
- Day At The Farm to be held at Stauffer's Farm
- Represent CCE on the Franklin County Animal Response Team
- Instrumental in establishing the Beef Farm of Excellence Award Program
- Master Forest Owner Visits





# Cornell Cooperative Extension



A **partnership** between the federal, state and county governments, Cornell University, and the citizens of New York State



**Integrated.** A network of professionals includes campus-based faculty and staff, regionally deployed specialists, county-based educators and professional employees

**Practical.** Programs are designed to solve real life problems, helping to transform and improve communities

**Locally-rooted.** Citizens are key to identifying and creating programs which serve the needs of communities, businesses and individuals

An education system which extends Cornell University's land grant programs to citizens across New York State

**Extensive.** High value educational programs are offered in every county and the five boroughs of New York City



**Research-based.** Educational programs are developed through interpretation and practical application of research conducted at Cornell University

**Comprehensive.** CCE programming covers five primary mission areas: Agriculture, Community, Environment, Nutrition, Youth and Families

