

4-H Department Premium List

Schaghticoke Fair

August 30 – September 4, 2023

Routes 67 and 40

Schaghticoke, New York

(518) 753-4411

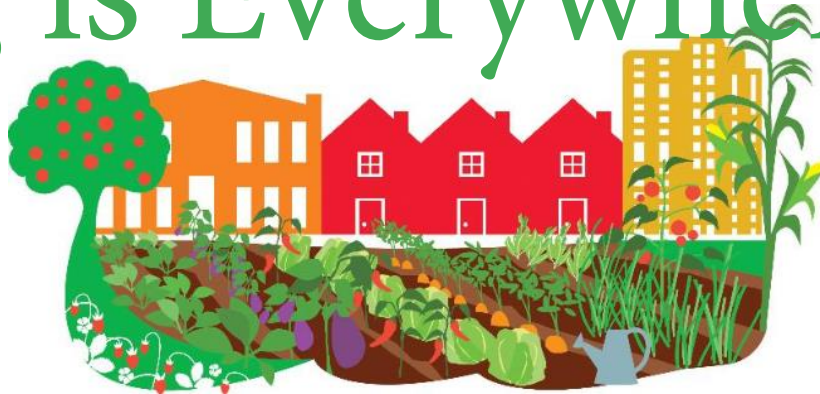
[2023 Schaghticoke Fair - FairEntry.com](https://www.fairentry.com)

All 4-H Animal Entries are due by August 10th in FairEntry

All 4-H General Interest Entries are due August 16th in FairEntry

the 2023 Schaghticoke Fair theme is:

Ag is Everywhere



This year we will be using FairEntry to enter projects and animals to be showcased in the 4-H Youth Development Department at the Schaghticoke Fair.

Cornell Cooperative Extension Rensselaer County

4-H Youth Development
99 Troy Road, Suite 203
East Greenbush, NY 12061
P (518) 272-4210 F (518) 272-1648
www.ccerensselaer.org

Schaghticoke Fair Passes

There will be no duplication of fair passes between the 4-H and Open Class Fair participants. Just as in years past, fair passes will be distributed by 4-H Club or Independent Family Clubs based on fair entries and signups for working in the Snack Bar, 4-H Building or simply assisting with 4-H operations during the fair. Don't wait until the last minute to volunteer.

Members 13 and under get in free. Members 14 and older will receive passes to fulfill their fair commitments. Passes will be available for pick up from the CCE office from August 21st to August 25th. They will be available for pickup during general interest judging in the CCE Building at the fairgrounds on Saturday, August 26th (9AM to 11AM) and Monday, August 28th (4PM to 7PM). Passes will be available in the CCE Building from 10 AM to 10 PM daily, beginning Wednesday, the first day of the fair.

Passes will be distributed as follows:

- **4-H Volunteers:** *Volunteering for minimum 3 hours* (1) One-Day pass
- **Parent of Livestock Exhibitors** 1 Week pass
- **Parent of Horse Exhibitor** (2) One-Day passes
- **Parent of Rabbit/Cavy/Poultry Exhibitor** 1 week pass and 1 One-Day pass per show and barn duty day (based on schedule)
- **Demonstrator, Fashion Show, Dog Exhibitor, Snack Bar Worker**
(1) One-Day pass to accommodate a parent and member to fulfill participating.

Why do we evaluate 4-H projects at the fair?

The 4-H Youth Development creates opportunities for youth to develop skills, practical knowledge and wisdom through observing, doing, and living through experiences. The emphasis of 4-H is on practical application of knowledge, or "learning by doing," and developing life skills; while acquiring a sense of responsibility, initiative, and self-worth.

Exhibition at the fair is a traditional part of the 4-H learning process. It brings the 4-H Community together and gives us all a sense of belonging. Throughout the year youth work independently and in a club setting on projects. The fair is a time to showcase all that hard work.

Fair evaluation is a large and important part of the 4-H Youth Development Program. It gives youth an opportunity to show their level of mastery in a safe environment. Our evaluators play a key role in helping youth reflect on what they have learned. They give specific feedback on what youth did well, and what they can do to make things better. They encourage youth to continue engaging in their own learning and reflect on how they benefited from those experiences.

Appropriate recognition can inspire young people to go further in their endeavors and serves as an incentive. It helps youth evaluate life skills they have learned through 4-H, and measure their progress toward their set goals. Evaluation of a 4-H fair exhibit also holds youth to a level of accepted standards of excellence, which is based on age and years in project area. Through evaluation, youth develop self-evaluation skills that will be used in their adult life. Additionally, by evaluating exhibitors for not just their product, but by what they learned, youth are taught the process of reflection-- an import asset to youth development.

Kandis Freer

4-H Youth Development Team Leader

Eileen DePaula

4-H Program Coordinator

Josh Pulito

4-H Environmental Educator at Dyken Pond

Bernadine Wiesen

Executive Director, Cornell Cooperative Extension
of Rensselaer County

Important Dates - Take Note

ITEM	DEADLINE	WHO
Horse ownership/lease papers and Coggins/Rabies DUE in the CCE office	June 1	Members planning to exhibit horses
All animals (excluding horses) must be owned or leased by 4-H member	June 15	Members planning to exhibit any animal (excluding horses)
Lease/Grade papers for cattle, sheep, goats, llamas, dogs, and swine on file in CCE office	June 15	Members planning to exhibit leased or grade Cattle, Sheep, Goats, Alpacas, Llamas, Dogs, or Swine
Read the Fair Book	Early July	Everyone
Plan Club involvement	Early July	Everyone
Call CCE Office with any questions	As soon as possible	Everyone
Reserve space for 4-H Club Exhibit	At least 10 days prior to Fair opening	Club Leaders
Sign up for Demonstrations in the CCE Building	10 days prior to Fair Opening	4-H Members 4-H Clubs
Sign up for Dog Demonstrations	10 or more days prior to Fair Opening	Members who have trained a dog through 4-H or other recognized program, and passed satisfactory evaluation at designated county dog evaluation event.
Reservations for Camping Spaces DUE to Schaghticoke Fair	July 28 (First Come First Served)	Livestock Exhibitors, including Horse Exhibitors, must have payment and campsite form to Fair Manager. <i>Campsite registration forms are found at the back of the book.</i>
All Animal Entries DUE	August 10	Everyone
Fair Clean-Up Day and Set-Up All General Interest Entries DUE	August 16	4-H Members <i>Make It and Take It Workshops</i> Everyone <i>Clean and set up 4-H building and barns</i>

Schedule of 4-H Events

4-H Building open from noon Wednesday, August 30th through 10pm Monday, September 4th

4-H Buildings open daily, 10am-10pm- all dates and times are subject to change

DATE	TIME	EVENT
Saturday, August 26 Monday, August 28	9:00am-11:00am 4:00pm-7:00pm	General Interest Exhibit Judging Club and Stationary Exhibits (Monday) in place
Tuesday, August 29	9:00am — 2:00pm 10:00am 2:00pm to 7:00pm	Set Up CCE Building Club and Stationary Exhibits Judged Rabbit/Cavy/Poultry can be received in barn
Wednesday, August 30	8:00am 8:00am—10:00am 10am All Day– everyday All Day 7:30pm 8:00pm	Horses in place Rabbit/Cavy/Poultry can be received ALL Animals in place Silent Auction begins in CCE Building Horse Show Livestock exhibitor meeting - Sheep and Goat Barn Standing Cattle PDC meeting
Thursday, August 31	All Day 9:00am 11:00am-12:00pm 1:00 pm 3:00pm 6:00pm	Horse Show Rabbit Show Cavy Show Written Exams; Rabbit & Cavy Dairy/Beef Judging/Challenge to follow Indoor Arena Poultry Show Swine Show– Sheep, Goat, Swine Barn Llama/Alpaca Show - TBD
Friday, September 1	10:00am 6:30pm	Beef Show Goat Costume Show
Saturday, September 2	To follow sheep show 9:30am 6:00pm	Goat Show Sheep Show & Shepherd's Lead Line Cow Chip Bingo
Sunday, September 3	2:00pm 4:00pm 6:30pm	Dog Show– location TBA Tractor Driving Fashion Revue—CCE Building
Monday, September 4	9:30am 4:00pm 10:00-11:00pm Check with Superintendents	Dairy Cattle Show End of Silent Auction– winners announced CCE Bldg. Remove General Interest Exhibits from CCE Building Livestock Release
Tuesday, September 5	10:00am-4:00pm	Pick up General Interest Exhibits Clean up CCE Building <i>All exhibits must be out of building by 4:00pm</i>

Table of Contents

<u>General Rules</u>	2
<u>Department 1: Animal Sciences General Rules</u>	3
<u>Section A: Dairy Cattle</u>	5
<u>Section B: Beef Cattle</u>	8
<u>Section C: Dogs</u>	10
<u>Section D: Goats</u>	13
<u>Section E: Horses</u>	15
<u>Section F: Rabbits</u>	19
<u>Section G: Cavies</u>	21
<u>Section H: Sheep</u>	22
<u>Section I: Swine</u>	24
<u>Section J: Poultry</u>	25
<u>Section K: Alpaca/Llama</u>	29
<u>Department 2: Professional Development & Leadership</u>	31
<u>Department 3: Environmental Education</u>	33
<u>Department 4: Family and Consumer Sciences</u>	36
<u>Department 5: Science and Technology</u>	40
<u>Department 6: Communicative and Expressive Arts</u>	42
<u>Department 7: Record Books</u>	44
<u>Department 8: Community Service</u>	44
<u>Department 9: Cloverbud</u>	44
<u>Department 10: Heritage</u>	45
<u>Department 11: Plant Science</u>	45
Entry Tags and Forms (<i>located at end of book</i>).....	a - e

Schaghticoke Fair

4-H Department

TOTAL PREMIUM IN THIS DEPARTMENT—\$8000.00

No duplication of passes between 4-H and Open class exhibitors.

General Rules

1. Exhibits are entered at exhibitor's risk. The Rensselaer County Agricultural and Horticultural Society and Cornell Cooperative Extension assume no responsibility in case of injury, loss, theft or damage to livestock and/or other exhibits from any cause and upon this condition only, are entries received; and the Society will not assume any liability for personal injury sustained by exhibitors, helpers, visitors, or guests.
2. Exhibitor must be enrolled in Rensselaer County 4-H work by May 15th of the current year to compete in this department. Please refer to your 4-H resources when preparing for fair.
3. Exhibitors must be enrolled in the projects in which they exhibit.
4. All exhibits must be owned or leased by the 4-H member and must have been made or grown as part of a 4-H project during the present project year.
5. Articles made in school programs or in other non-4-H activities should not be entered in the 4-H Department exhibit. (Members are encouraged to enter these exhibits in the Open Class.)
6. Any exhibit not entered according to the specifications for that class will be disqualified.
7. Release time for all exhibits is as noted on page **iv**.

RULES for Members with Animal Entries:

1. Advanced entries are required for all animal sections and are due by August 10th in FairEntry.
2. Copies of Rabies certificates and all other required Health Forms must be in hand for the NYS Vet Check for sheep, goats, swine, dogs, llamas/alpacas, horse and cattle.
3. **For animal entries to be considered valid they have to be signed off on by a club leader, horse entries must be signed by the Organizational Leader. Organizational Leaders will receive an email to sign off on entries after they have been submitted in FairEntry.**

RULES for Members with General Interest (Non-Animal) Entries:

1. General Interest Entry Forms due the same day as Fair Cleanup Day in **FairEntry** Online System.
2. Member must be present while project is judged.
3. No entry fee is charged.
4. Entries will be judged according to the non-competitive Danish system, using the member's 4-H age and years in project to determine the level of expertise expected.
5. The Society and Cooperative Extension reserve the right to interpret and apply the rules and to resolve questions as appropriate. Rules will be enforced as stated in the following 4-H Program Development Committee motion dated September 27th, 1976:
"The 4-H Program Development Committee decrees that all rules established by the 4-H Program Leader, agents, and advisory committees (beef, dairy, horse, sheep, general interest etc.) which govern program, projects, award trips, exhibitors at the Schaghticoke Fair; all county-wide activities and achievement and recognition must be enforced by all 4-H personnel (agents, program assistants, staff, volunteers and members) as written, no exceptions will be allowed."
6. The Society and Cornell Cooperative Extension of Rensselaer County reserve the right to accept or reject any entry before the opening or judging of the show.
7. **OVERNIGHT:** 4-H members will not be permitted to remain overnight on the fairgrounds except for livestock exhibitors as stated in livestock section or Snack Bar workers.

Fun at the Fair

- **Dairy/Beef Challenge and Judging** - Open to all members to test their Dairy Management knowledge. Thursday 1 PM in the indoor arena.
- **Tractor Driving Contest** - 4 PM, Sunday. Open to all youth who have earned their Tractor Safety Certificate and members 16 years old and older. See Department 5, Science and Technology for class information ([page 40](#)). Call CCE Office by August 10th for more details.

Department 1: Animal Sciences

GENERAL RULES

1. Pre-entries must be made for all animals by August 10th. All horses must be owned or leased and appropriate paperwork filed with the CCE office by June 1st. All other animals (exception certain auction animals) must be leased or owned by June 15th with appropriate paperwork on file in the CCE office. Members must be the sole owners of their project animals (no farm names/co-ownerships permitted) except in the case of horses and dogs.
2. Exhibitors of all ages will participate in the same classes except as indicated.
3. All animal exhibitors must enter and show in showmanship or they will not be allowed to participate in the rest of the show and will not receive premiums. Showmanship exceptions need to be approved by the 4-H PDC, a written accommodation request needs to be submitted before the show. A formal inspection will need to take place before the animal can be shown in any class.
4. No exhibitor will be allowed to show more than two animals per breed in one class (with the exception of rabbits, poultry and cavies). Exhibitors may pre-enter more than two animals per class but must decide which specific two animals will be shown at the time of registration check by the 4-H staff, except dog entries.
5. 4-H project animals can be shown in both 4-H and Open Class if they meet the requirements of open class (see open class premium book for details).
6. Any member wishing to enter open class shows should secure a catalog and submit entry to the Fair Association Secretary. Open class entries close August 15.
7. Animals must be shown by the exhibitor except when there are two entries in the same class. In this instance a fellow 4-H member must show the second animal.
8. No animals are to be taken out of designated areas (animals are not allowed on the midway or out of barn areas).

9. Cloverbud exhibits will receive participation ribbons. In keeping with NYS 4-H policy Cloverbud entries will not receive premiums. Cloverbuds enter in Department 9. There are opportunities to participate in Poultry, Rabbit, and Cavy departments as well as in Cloverbud Teaser events, Model Horse Show, and exhibition classes if chaperoned by an adult.
10. All Cattle and Swine must be identified by USDA approved official ear tags.
11. Members will not be permitted to wear any clothing that reveals a farm name in the 4-H show.

LIVESTOCK AREA CAMPING RULES

There are limited campsites for livestock exhibitors. To reserve a campsite, you need to contact the Schaghticoke Fair. Full camping payment and form must be sent to the Schaghticoke Fair by July 31st. For campers with sliders/awnings be sure to include that information as asked for on the form. Additionally, at the back of the book there is a list of Campsite Rules dictated by the NYS Dept. of Health and the Schaghticoke Fairgrounds. Be sure you are familiar with these rules as they will be enforced. If you have questions please call the fair office at 518-753-4411. **Reservations CANNOT be made over the phone or with Cornell Cooperative Extension.** If there are more requests than sites, preference will be given to those exhibitors with the greatest number of animals exhibited. A lottery may be necessary. No campers may be brought to the grounds before the Saturday prior to the opening of the Fair. Campsites with full hookups (water, electric, and sewage) are available on a first come first serve basis.

Camper registration form can be found at [Schaghticoke Fair Website](#)

OVERNIGHTS

All 4-H livestock exhibitors remaining on the grounds overnight must have an approved responsible adult to chaperone, listed on the permission slip (unless staying with their parents).

Permission slips are due to the CCE Office by **August 10th**. Overnight arrangements outlined on parental permission slips must be followed. Responsible adults named must be with and account for all members assigned to them after lights out. No 4-H youth will be allowed to stay overnight in the barns. Livestock exhibitors staying on the fairgrounds will be the sole responsibility of their parents or chaperone.

EXHIBITOR GUIDELINES — LIVESTOCK, POULTRY AND SMALL ANIMAL

The following are guidelines for all exhibitors. These are not rules but guidelines that promote the 4-H Motto of "Learning by Doing".

1. Each exhibitor is expected to care for his or her own animals and do their share of keeping the livestock exhibit area safe, neat and attractive during the entire Fair.
2. Each exhibitor is expected to prepare his or her animals for exhibit.
3. Exhibitors are responsible for having their cages cleaned and animals fed every morning by 9am.

HERDSMANSHIP/SHEPHERDSHIP

4-H Herdsmanship is judged for all Horse and Cattle Clubs. Goat, swine, sheep, and alpaca/llama exhibitors may be judged individually. Impromptu inspection visits will be made over the course of the fair. It is likely that sixty percent (60%) of Herdsmanship will be based on cleanliness of animal, general appearance of exhibit area, proper care of equipment and safety and courtesy to the public. The remaining 40% will be based on the educational value of the herdsmanSHIP/ shepherdSHIP exhibit including - visibility, educational content, public appeal and general appearance. There will be some differences from species to species in the judging, call the CCE office with questions.

OTHER EXHIBITOR INFORMATION

4-H members must furnish their own grain, hay and bedding.

There will be a meeting of 4-H Beef, Sheep, Dairy, Goat, Alpaca/Llama and Swine exhibitors on Wednesday at 7:30 P.M. in the Sheep/Goat Barn.

Stall cards are available from the CCE Office in advance.

Exhibitor must receive a Blue Ribbon to be considered for Champion or Grand Champion.

LIVESTOCK HEALTH REGULATIONS

All animals being exhibited at the fair must have a current rabies vaccination (excluding poultry, cavies, or rabbits). Consult with your veterinarian. Vaccination may not be older than one year at the opening of the Fair, with the exception of the 3-year vaccines for dogs and sheep. If this is the first vaccine, it is recommended it be administered at least 14 days prior to the opening of the Fair as it takes 2 weeks for the vaccination to take effect.

GENERAL HEALTH REQUIREMENTS

- a. Health requirements for the control and suppression of contagious, infectious or communicable diseases relating to domestic animals are hereby adopted to be observed and enforced by every fair or exposition which receives money from the state pursuant to article 24 of the Agriculture and Markets Law and by the New York State Fair.
- b. The Commissioner of Agriculture and Markets or their authorized agent may deny admission to, or require segregation or removal from, fair premises of any animal found to be affected with or exposed to any communicable disease whether internal or external and whether or not such disease is specifically mentioned in these regulations, if in his/her opinion such action is necessary of the protection of other exhibits. The term communicable disease shall include but not be limited to diseases such as mange, warts, ringworm, pinkeye, caseous lymphadenitis, contagious hoof infections, sore mouth, respiratory infection, or contagious ecthyma.
- c. Animals from New York State qualifying for one fair are considered qualified for all other agricultural fairs and the New York State Fair to be held during the same calendar year, provided the herd or flock of origin does not subsequently become subject to quarantine and the animal to be exhibited remains healthy.
- d. Identification. Each fair entry and Certificate of Veterinary Inspection (CVI) must carry positive means of identification, including all ear tag numbers, tattoos, brands, ear notches, etc. The CVI must be issued on or after May 1 of the current year.
- e. In addition to the requirements set forth in this part, any animal to be exhibited from OUT-OF-STATE must meet New York State import regulations and be accompanied by an official health certificate approved by the chief livestock official of the state of origin. Examinations made to qualify out-of-state animals after arrival in New York will not be acceptable.
- f. Notwithstanding any other provision set forth in this part, animals under quarantine for any reason, or from a herd under quarantine for any reason, or from a ring test suspicious herd, may not be exhibited.

Cattle

- a. All cattle must have a current rabies vaccination and must be accompanied by a CVI individually identified and signed by an accredited veterinarian and dated on or after May 1st of the current year. Additionally, all cattle must have a negative test for Bovine Viral Diarrhea—Persistent Infection (BVD-PI), the date and results of this test must be included on the CVI. Certificate must be approved by the appropriate fair official, before the animals are eligible for exhibition or competition. Dates of all tests must be recorded.
- b. Bovine Respiratory Disease Complex, (shipping fever complex) - Cattle 3 mos. of age and older must show proof of being vaccinated against the common bovine respiratory disease viruses such that they are adequately immunized against these diseases prior to arrival on the fairgrounds. Vaccination must include immunization against Bovine Viral Diarrhea (BVD), Bovine Respiratory Syncytial Virus (BRSV), Infectious Bovine Rhinotracheitis (IBR) and Para-influenza (PI). This information must be made an OFFICIAL PART OF THE HEALTH CERTIFICATE FOR BOTH NEW YORK AND OUT OF STATE EXHIBITORS.
- c. There is a limit of 6 cattle entries per beef/dairy show per 4-H exhibitor - 2 animals per class. Senior members wishing to enter more than 6 dairy animals must seek approval at the August Cattle Program Development Committee meeting.
- d. Two animals can be leased per exhibitor as long as verification paperwork is completed by June 15th. Only one of the leased animals can be shown. A leased cow/calf pair is considered one animal.
- e. Please indicate on your entries the date of birth of your animals.
- f. Must be identified by an official USDA approved ear tag. Radio frequency identification (RFID) tags are strongly recommended. Call NYS Ag & Markets: 518-457-3502
- g. Safety comes first in and out of the ring. Assistance from older youth or adults will be permitted as when appropriate.

SECTION A: DAIRY CATTLE - Show Monday, 9:30 A.M.

Fair entries for dairy cattle are due August 10.

Junior, Intermediate, and Senior Calves: Excellent - 28; Good- 20; Creditable - 12

Junior, Intermediate, and Senior Yearlings: Excellent - 36; Good - 28; Creditable - 20

Dry Cows, Cows 2, 3, 4, years and 5 years old and older: Excellent - 44; Good - 36; Creditable – 28

1. All 4-H Dairy cattle exhibited in classes other than calf classes must be dehorned.
2. All Dairy cattle entered in 4-H classes must be housed in the 4-H exhibit areas, except milking cows which may be kept either in the 4-H exhibit area or with the family herd.
3. There will be no dairy crossbred animals exhibited. All animals will exhibit in their breed class.
4. Dual ownership between siblings will be allowed as long as all of the following criteria are met: They are bonafide siblings (sister, brother, step-sister/brother, half-sister/brother, adopted)
5. All siblings on registration paper of animal(s) are non-cloverbud age as of Jan 1st of the current year.
6. One sibling has to designate the animal as their project animal for the project year by June 15th of current year by filing and completing animal identification form.
7. Designation cannot change after June 15th and the animal must be shown and exhibited by designated sibling.
8. Bred and owned recognition can be given to designated youth as long as dual ownership is a current and legal partnership filed with breed organization.

Class No.

- 1110 Bred by Exhibitor** - Blue Ribbon winner from Classes 1-611 are eligible. Registration papers must accompany animal to the ring for this class. Bred by Exhibitor Class will be divided and judged by breeds. All entrants receive 25 points and ribbon. Enter class day of the show.
- 1111 Daughter/Dam** - Registration papers must accompany animals to the ring for this class. Class will be divided and judged by breeds. (Excellent - 34; Good - 24, Creditable – 20)
- 1112 Young Breeder's Herd** - Will consist of 3 females of the same breed and owned by an individual. Herd must consist of one female never fresh, one cow and a female any age. One animal must be the result of the members breeding program. Only one herd/member/breed entered. Papers must accompany exhibitor. Class will be judged by breeds. All entrants will receive 44 points and ribbon.
- 1113 4-H Club Herd** - Herd to consist of 4 dairy females, not more than 2 owned by one exhibitor entered in this class, of any breed. The number of herds exhibited by one Club is limited to 2 per Club. No pre-entry required.

Class No.

- 50** Dairy Showmanship - Youth 15-19, All Breeds
- 51** Dairy Showmanship - Youth 12-14, All Breeds
- 52** Dairy Showmanship - Youth 8-11, All Breeds
- 53** Novice* - Never shown in Dairy Showmanship before.

Written Exam

Excellent - 20; Good - 15; Creditable -10

54 Cloverbud Teaser**55 Novice Exam**

Non Cloverbud-aged youth showing for the first time

56 Junior Exam - 13 yrs. and under as of Jan 1st**57 Senior Exam** - 14 yrs. and older as of Jan 1st**4-H Dairy Classes, Breeds, and Numbers**

Class Description and Numbers	Holstein	Guernsey	Brown Swiss	Ayrshire	Jersey	Milking Shorthorn	Other
Junior Heifer Calves Born on or after 3/1/2023	91	92	93	94	95	96	97
Intermediate Heifer Calves Born 12/1/2022 – 2/28/2023	101	102	103	104	105	106	107
Senior Heifer Calves Born 9/1/2022 – 11/30/2022	201	202	203	204	205	206	207
Summer Yearling Heifers Born 6/1/2022 – 8/31/2022	301	302	303	304	305	306	307
Junior Yearling Heifers Born 3/1/22 – 5/31/2022	401	402	403	404	405	406	407
Intermediate Senior Yearling Heifers Born 12/1/2021 – 2/28/2022	501	502	503	504	505	506	507
Senior Yearling Heifers Born 9/1/2021 – 11/30/3021	601	602	603	604	605	606	607
Dry Cow Any mature animal not milking	701	702	703	704	705	706	707
2-Year-Old Cows Born 9/1/2020 – 8/31/2021	801	802	803	804	805	806	807
3-Year-Old Cows Born 9/1/2019 – 8/31/2020	901	902	903	904	905	906	907
4-Year-Old Cows Born 9/1/2018 – 8/31/2019	1001	1002	1003	1004	1005	1006	1007
Cows 5 Years and Older Born before 9/2/2018	1101	1102	1103	1104	1105	1106	1107

SHOWMANSHIP – to precede breed classes on Monday, to start at 9:30 AM

Excellent – 34; Good – 26; Creditable - 18

- ALL exhibitors must show in this class. Showmanship exceptions need to be approved by the 4-H PDC, a written accommodation request needs to be submitted before the show. A formal inspection will need to take place before the animal can be shown in any class.
- Each contestant must show his/her own animal, but during the contest may show some other 4-H animal.
- A contestant’s appearance must be clean and neat - white clothes are mandatory. No farm names shall be permitted to be worn on exhibitor in the show ring during the show (i.e. no farm shirts).
- In making awards the judge will consider the following— see Score Card below.

Showmanship Score Card

Animal Appearance – 30 Points

Condition/Thriftiness	5
Clipping	10
Grooming	5
Cleanliness	10

Appearance of Exhibitor – 10 Points

Appearance of Exhibitor	10
-------------------------	----

Showing in Animal Ring – 60 Points

Leading	25
Posing	15
Showing Animal to Best Advantage	10
Poise, Alertness, and Attitude	10

Total Score – 100 Points

Total Score	100
-------------	-----

Dairy Cattle Judging/Dairy Challenge - Thursday at 1 PM

Two classes will be judged. Members do not have to exhibit dairy cattle to judge. Members are encouraged to pre-register by signing up for these classes.

Class No. (20-15-10)

- 45 Dairy Judging – Juniors** (13 years and younger)
- 46 Dairy Judging – Seniors** (14 years and older)
- 47 Dairy Challenge – Junior**
- 48 Dairy Challenge – Senior**

SECTION B: BEEF CATTLE

Show Friday, 10 AM

Fair entries for beef cattle are due August 10.

Please include date of birth of your animals on entry form. Beef cattle will be housed with their 4-H Club.

If an exhibitor leases an animal, two animals per exhibitor can be leased and the verification paperwork needs to be completed by June 15th. Only one of the leased animals can be shown. A leased cow/calf pair is considered one animal.

1. Dual ownership between siblings will be allowed as long as all of the following criteria are met: They are bonafide siblings (sister, brother, step-sister/brother, half-sister/brother, adopted)
2. All siblings on registration paper of animal(s) are non-cloverbud age as of Jan 1st of the current year.
3. One sibling has to designate the animal as their project animal for the project year by June 15th of current year by filing and completing animal identification form.
4. Designation cannot change after June 15th and the animal must be shown and exhibited by designated sibling.
5. Bred and owned recognition can be given to designated youth as long as dual ownership is a current and legal partnership filed with breed organization.

Feeder Steers, Beef Steers, All Bull Calves, Junior, Intermediate and Senior Heifers:

Excellent 28; Good - 20; Creditable – 12

Summer Yearling, Junior Yearling, Intermediate Yearling, and Senior Yearling:

Excellent - 36; Good 28; Creditable - 20

Heifers over 2 years, cows 3 and over, pair of calves and pair of yearlings, cow/calf class:

Excellent - 44; Good - 36; Creditable – 28)

Each contestant must show his or her own animal.

The judge, in making the awards, shall consider the following points:

Preparation of the animal for showing -

1. Condition of feet and trimming of toes
2. Clipping of head, ears, tail, etc.
3. Cleanliness and condition of hide and hair

Showing the Animal -

1. Control of the animal by exhibitor
2. Poise and coolness of the exhibitor
3. Skill in showing the animal to best advantage
4. **If showing bulls 1 year and older, animal must have a nose ring or nose lead at all times.**

Junior Champion will be presented after Senior Yearling Heifer Classes.

Senior Champion will be presented after Cows 3 years and older class.

Beef Cattle Showmanship

Excellent- 34; Good- 26; Creditable - 18

Class No.

600 Novice Beef Cattle Showmanship -

Never shown in Beef Showmanship before

601 Junior Beef Cattle Showmanship -

Members 13 years of age & Under

602 Senior Beef Cattle Showmanship -

Members 14 years of age and older

Beef Judging to take place @ 1 PM Thursday

702 Junior Beef Judging - members 13 yrs. and under

703 Senior Beef Judging - members 14 yrs. and older
(Excellent – 20; good – 15; Creditable – 10)

Class No.

401 Feeder Steers - 300 - 799 lbs.

402 Market Steers - 800 lbs. and over

403 Dairy Feeder Steer - 200-650 lbs.

404 Dairy Market Steer - 650 lbs. and over

Written Exam

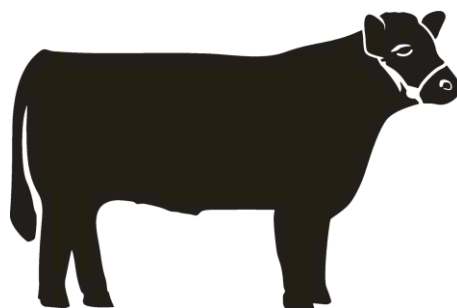
Excellent - 20; Good - 15; Creditable -10

405 Novice Exam - Non Cloverbud aged youth showing for the first time.

406 Junior Exam -13 yrs. and under as of Jan 1st

407 Senior Exam - 14 yrs. and older as of Jan 1st

408 Cloverbud Teaser



4-H Beef Classes, Breeds, and Numbers

Class Description	Angus	Hereford	Other Reg.	Grade
Junior Bull Calves Born after 3/1/2023	1	101	201	
Intermediate Bull Calves 1/1/2023 – 2/28/2023	2	102	202	
Senior Bull Calves Born 9/1/2022 – 12/31/2022	3	103	203	
Summer Yearling Bull Calves Born 5/1/2022 – 8/31/2022	4	104	204	
Junior Yearling Bulls Born 1/1/2022-4/30/2022	5	105	205	
Senior Yearling Bulls Born 9/1/2021 – 12/31/2021	6	106	206	
Two Bulls Bred and owned by exhibitor	7	107	207	
Junior Heifer Calves Born after 3/1/2023	8	108	208	308
Intermediate Heifer Calves Born 1/1/2023 – 2/28/2023	9	109	209	309
Senior Heifer Calves Born 9/1/2022 – 12/31/2022	10	110	210	310
Summer Yearling Heifers Born 5/1/2022 – 8/31/2022	11	111	211	311
Junior Yearling Heifers Born 3/1/2022 – 4/30/2022	12	112	212	312
Intermediate Yearling Heifers Born 1/1/2022 – 2/28/2022	13	113	213	313
Senior Yearling Heifers Born 9/1/2021 – 12/31/2021	14	114	214	314
Female Over 2 years and under 3 years, without nursing calf at side. Cannot be shown in classes 16 or 17	15	115	215	315
Cows Over 2 years old and under 3, with nursing calf	16	116	216	316
Cows 3 years old and older with nursing calf	17	117	217	317
Two Females Bred and owned by exhibitor	18	118	218	318
Pair of Calves One Sr, Int., or Jr. Bull calf and one Sr., Int., or Jr. Heifer Calf	19	119	219	
Pair of Yearlings One Junior or Summer Bull, One Junior, Int., or Summer Yearling Heifer	20	120	220	

Dogs

SECTION C: DOGS

SHOW - Sunday, 2 PM

For Non-Cloverbud Members

Dogs must be owned or leased by June 15 of the project year.

Fair entry deadline for dogs is August 10.

A copy of a current rabies vaccination needs to be on file with the CCE office prior to exhibition. This can be sent in with fair entry.

(Excellent- 24; Good - 20; Creditable - 8)

Members are invited to display/groom their dogs in the CCE Building before or after dog events.

Members are invited to schedule demonstrations in the Oxen Ring for agility and/or obedience.

Call the CCE office to pre-register by August 10th.

4-H youth who have trained their personal, immediate family, or a leased dog for the 4-H project, registered or mixed breed dog, for obedience in the 4-H Dog Obedience program or another dog series & passed satisfactory evaluation at designated county dog evaluation event (contact CCE office for details) are eligible to participate in this trial.

1. An exhibitor may not enter more than one dog per class.
2. A dog may be entered in one Rally—O, one Obedience, one Grooming and Handling, and one Agility class.
3. Dogs should arrive at the fairgrounds in time to allow for any necessary final preparations and may leave upon completion of the trial.
4. There are no facilities for housing dogs overnight on the fairgrounds.
5. Dogs will remain in holding area throughout trial.
6. Members are responsible for bringing necessary supplies for dogs for the day (i.e., water, feed, kennel, etc.).
7. No open-toed shoes, jeans, t-shirts or shorts
8. Suggested attire for exhibitors is tan pants and white shirt.

All scoresheets, rules and guidelines can be found online: <https://4h.ansci.cornell.edu/animal-programs/dogs/dog-class-scoresheets/>

Grooming and Handling

(Score sheet: Grooming and Handling All Levels)

The exhibitor will be required to present his or her well groomed dog to the judge in a standing position and also in motion. Posing the dog and bringing it forward for inspection will be included. The judge will examine the dog. The exhibitor should follow the commands of the judge once the exhibitor is in the ring.

Class No.

- 1 **Grooming and Handling A** - For 4-H'ers who are competing for the first time in Grooming and Handling, unless the handler has qualified for the open class of Junior showmanship at an A.K.C Show (or equivalent dog show).
- 2 **Grooming and Handling B** - For 4-H'ers who have previously competed in Grooming and Handling.
- 3 **Grooming and Handling C** - For 4-H'ers who has previously been a grooming and handling champion or reserve champion and/or have qualified for the open class of junior showmanship at an ACK (or equivalent), even if it is their first year.

Obedience

Beginner

(Score sheet: Beginner A&B)

Exercises will include Heal on Leash, Figure 8, Sit for Exam, and Sit, Stay (30sec-1min), Recall. Dogs must not have graduated beyond the beginner level.

Max Score:200

Class No.

- 4 **Beginner A** - For members who HAVE NOT previously trained and competed in obedience. Dogs receiving a blue in this class **MUST** move up to Beginner C or higher. *Dogs entered in this class can't participate in Agility.*
- 5 **Beginner B** - For members who have previously trained and competed in obedience. Dogs receiving a blue in this class **MUST** move to Beginner C or higher. *Dogs entered in this class cannot also participate in Agility.*
- 6 **Beginner C** - for members who have previously trained and competed in beginner or more advanced levels of obedience. Dogs receiving a blue in this class **MUST** move to Graduate Beginner. Recall is off leash and sit is dropped leash. *Dogs entered in this class can also participate in Agility.*

Graduate Beginner

Open

(Score sheet: Beginner Grad A)

Exercises will include: Stand for Examination, Recall, Sit Stay Get Your Leash are performed off leash and Long Sit (1 minute) exercises are done with 6' leash attached to collar and held by handler. Dogs must not have graduated beyond the Graduate Beginner level

Max Score 200

Class No.

7 Graduate Beginner A - For 4H'ers who have not previously trained a dog beyond the Graduate Beginner level. Dogs must not have graduated beyond the Graduate Beginner level. Dogs receiving a blue ribbon in this class MUST move to Novice.

8 Graduate Beginner B - For 4H'ers who have previously trained a dog in graduate beginner or more advanced levels of obedience. Dogs receiving a blue ribbon in this class MUST move to Novice.

9 Novice Obedience -

(Score sheet: Novice A&B)

For 4H'ers and dogs who have completed a novice course of instruction but have not graduated beyond this level. Dogs must not have completed their AKC Companion Dog (CD) title (or the equivalent – UKC U-CD, All-American CD, Club CD, CKC CD, etc.) unless the CD was earned within 60 days of the show. Other than the Heel on Leash and Figure 8, all exercises will be performed with the dog off lead. Exercises will include same format as Graduate Beginner with the addition of heeling off leash.

10 Advanced Novice -

(Score sheet: Novice Advanced)

For 4H'ers and dogs who have not graduated beyond the Advanced Novice level of obedience. Dogs may have earned a CD title but not a Companion Dog Excellence (CDX) title (or the equivalent). Open to any handler and dog beyond the Novice Level but not ready for Graduate Novice.

11 Graduate Novice -

(Score sheet: Novice Grad)

Dogs may not have earned a CDX or equivalent title, unless the title was earned within 60 days of the show. The exercises are Heel Free and Figure 8; Drop on Recall; Dumbbell Recall; Recall over High Jump; Recall over Broad Jump and Stay Get Your Leash Sit Down (1 minute). The maximum possible score is 200 points. Open to any handler and dog beyond the Novice level but not ready for open class (due to training and/or physical ability of dog).

Class No.

12 Open -

(Score sheet: Open A&B)

For 4H'ers and dogs who have not graduated beyond the Open level of obedience. Dogs may have earned a CD degree but not a CDX, unless the CDX was earned within 60 days of the show. All exercises will be performed with the dog off leash (Heel Free and Figure 8; COMMAND DISCRIMINATION, Drop on Recall; Retrieve on Flat; Retrieve Over High Jump; Broad Jump; Stay Get Your Leash Sit Down (1 minute). Maximum possible score will be 200 points.

13 Utility -

(Score sheet Open Utility)

For 4H'ers and dogs who have not earned a Utility Dog (UD) title or the equivalent, unless this title has been completed within 60 days of the show. ALL exercises will be performed with the dog off leash (Signal Exercise; Scent Discrimination, one metal article, one leather article; Directed Retrieve; Moving Stand and Examination; Directed Jumping). Maximum possible score will be 200 points. Dogs may repeat in this class regardless of point score or ribbon placing in the Utility class at previous State Fair shows. With special permission from the 4-H Dog Show Superintendent, 4H'ers with dogs that have earned a UD may participate in the Utility class FOR EXHIBITION ONLY (FEO).

14 Service Dog -

(Score sheet: Open Service Dog)

For dogs currently being raised by 4-H members for an organization that provides dogs to aid the physically challenged (e.g. Guiding Eyes for the Blind, Hearing Dogs, etc.). It is intended as a way to inform the public of this important aspect of the 4-H Dog Program. Dogs will be evaluated on their appearance (grooming) and simple obedience appropriate for their age and service. Entrant must include the name of the organization for which the dog is being used. Service Dogs are allowed to wear identification (blanket, collar, etc.) appropriate to their sponsoring organization. Any dog that is released from a service dog program is no longer eligible for this class. Dogs entered in this class may not participate in any other class except exhibition.

Rally

Class No.

15 Rally Novice -

(Score sheet: [Rally Novice A](#))

Course shall consist of 10-15 stations plus a START & FINISH sign. This course is open to dogs at all levels of Obedience. Rally Novice will be performed on a leash.

16 Rally Advanced -

(Score sheet: [Rally Advanced](#))

Course shall consist of 12 – 17 exercise stations plus a START & FINISH sign. Rally Advanced course shall be performed with the dog off leash. All dogs must be working at the Graduate Beginner level to be training/working/showing in this class.

Agility

Class No.

17 Agility

(Score sheet: [Agility Pre-Novice](#))

A ten obstacle course that is straight forward using non-winged jumps, pipe tunnel, A-frame, tire jump, table and dog walk.

4-H rules can be located at:

<http://4h.ansci.cornell.edu/animal-programs/dogs/dog-class-scoresheets/>

- All dogs MUST be working at the Beginner C Level to be training/working/showing in Agility. Dogs not entered in an obedience class may be asked to perform an off-lead recall to show that they belong in Agility.
- Dogs must be at least 15 months old.
- Either no collar or flat buckle collars but no hanging tags or attachments.
- Handlers shall be allowed to bring their dog to the start line on leash. Handlers shall comply with the judges' instructions for being ready to start their run, having their dog off leash and under control in a timely manner.
- Food and toys are not permitted in course area or in the ring and handlers are not permitted to use whistles or other instruments or devices.

Class No.

18 Exhibition -

Designed for members to perform a Drill Team Routine, Brace Team, Utility Demonstration, Agility Demonstration or Tricks. - no premium.

19 Costume Class -

For Cloverbud and non-Cloverbud members- no premium.

Written Exam

Excellent - 20; Good - 15; Creditable -10

20 Cloverbud Teaser

21 Junior Exam - 13 yrs. and under as of Jan 1st

22 Senior Exam - 14 yrs. and older as of Jan 1st



Goats

SECTION D: GOATS

Show- Following Sheep Show on Saturday

Fair entries for goats are due August 10.

Goats must be currently vaccinated against rabies and must be accompanied by a CVI signed by an accredited veterinarian identifying the animals individually to be exhibited and indicating that the herd or flock has been inspected and found free from all contagious, infectious, or communicable diseases. Inspection shall have been made on or after May 1 of the current year. Certificate must be approved by the appropriate fair official before the animals are eligible for exhibition or competition.

Two animals can be leased per exhibitor as long as verification paperwork is completed by June 15th.

Up to 24 months:

Excellent - 16; Good - 12; Creditable -8

2 Years and older:

Excellent - 24; Good - 16; Creditable - 8

1. Show is open to any non-Cloverbud Rensselaer County 4-H member registered in a goat project.
2. **All goats must be identified by one of the following: 1) USDA approved tags, 2) a legible registration tattoo or, 3) a legible USDA approved herd tattoo, and individual animal ID number or, 4) electronic ID if the goat is enrolled in the Scrapie Flock Certification Program and/or the electronic ID is recorded on the goat's registration paper. Exhibitor must provide their own microchip reader. Official tags can be obtained by contacting USDA at 1-866-873-2824.**
3. Show open to does of all ages registered and recorded grades. Unregistered goats and wethers are permissible in the pet, fiber, alternative use, grade and meat classes.
4. No horns except on animals who's breed registry has horns included in their official breed standard.
5. Registration certificate or recorded grade papers are required for all animals over 6 months of age as appropriate.
6. Base date for computing age of animals is September 1, of the current year.
7. If there is only one animal in a class, the judge will award as she/he sees fit.
8. There will be a supervised milk-out between 4 PM and 7 PM the day before show day.
9. Animals shown in groups or special classes must have been shown in their regular classes.
10. Individual goats can only be entered in one regular class, they can only be evaluated once for their own

merit. Members will not be permitted to wear anything that reveals a farm name while in the 4-H show.

11. Members should show in whites (if showing a dairy breed) or in tan pants with white shirt.

**Junior Champion following the 24 month and under class*

**Senior Champion following the 5-year class*

Class No.

1000 Meat Class – Open to does and altered male goats, evaluated on merits of meat production and stage of development (weight/age). (Excellent – 24; Good – 16; Creditable – 8)

1001 Companion Class – Open to any goat used for companion/therapy purposes that does not fit in any other class. Will be judged based on the relationship between exhibitor and their goat demonstrated in the show ring and overall condition of the goat (Excellent – 16; good – 12; Creditable – 8)

1002 Alternative Use Class – Open to altered male goats and does used for draft or recreation purposes. (Excellent – 16; good – 12; Creditable – 8)

1003 Meat Project Record – Open to all members to submit a record of meat production project without exhibiting the animal. Appropriate for Boer meat projects where males are not altered. Project records available at the 4-H office (24-16-8)

1004 Fiber Use – For goats raised for the purpose of fiber production. For example, Cashmeres, Pygoras, or any grade/cross as appropriate. (Excellent – 24; good – 16; Creditable – 8)

Goat Showmanship

Appearance of Animal.....40

Appearance of Exhibitor.....10

Showing the Animal in the Ring.....50

Excellent- 34; Good- 26; Creditable- 18

Class No.

13 Novice Showmanship - Open to members who have not previously shown goats.

14 Youth Showmanship, Junior for members 13 years and under as of January 1st

15 Youth Showmanship, Senior for members 14 years and older as of January 1st

16 Costume Class (Friday @ 6:30 pm) - no premium

Grand Champion Showman will be chosen from the above classes.

Written Exam

Excellent - 20; Good - 15; Creditable -10

17 **Cloverbud Teaser**

18 **Novice Exam**-non Cloverbud aged youth showing for the first time.

19 **Junior Exam**—13 yrs. and under as of Jan 1st

20 **Senior Exam**—14 yrs. and older as of Jan 1st

4-H Goat Classes, Breeds, and Numbers

Class Description	Alpine	Lamancha	Nigerian Dwarf	Nubian	Oberhasli	Saanen	Togenburg	Pygmy	Other Breeds	Grade
2 to 4 months	1	101	201	301	401	501	601	701	801	901
4 to 8 months	2	102	202	302	402	502	602	702	802	902
8 to 12 months	3	103	203	303	403	503	603	703	803	903
12 to 24 months	4	104	204	304	404	504	604	704	804	904
Milking Does Under 2 years	5	105	205	305	405	505	605	705	805	905
2 to 3 years	6	106	206	306	406	506	606	706	806	906
3 to 5 years	7	107	207	307	407	507	607	707	807	907
5 years and older	8	108	208	308	408	508	608	708	808	908
Get of Sire¹	9	109	209	309	409	509	609	709	809	909
Produce of Dam³	10	110	210	310	410	510	610	710	810	910
Dam and Daughter²	11	111	211	311	411	511	611	711	811	911
Best 3 Females⁴	12	112	212	312	412	512	612	712	812	912

¹ **Get of Sire:** to consist of 3 does, the get of one sire and at least 1 in milk. Sire must be named. Borrowing is allowed.

² **Dam of Produce:** to consist of 3 does, the get of one dam and at least 1 in milk. Dam must be named. Borrowing is allowed.

³ **Dam & Daughter:** to consist of one dam and her daughter.

⁴ **Best 3 Females:** to consist of 3 does. All must be owned by exhibitor.

Best and Reserve Best of Show Doe will be selected at the end of the breed classes

Horses

SECTION E: HORSES

Wednesday and Thursday

1. All exhibitors must pre-enter classes in which they wish to participate, including written test. All entries must include the height of the animals.
2. All entries require the 4-H Horse Club Organizational Leader's signature- leaders will sign off after all entries are submitted to CCE Office through **FairEntry Online System**. (*Members of 4-H Clubs where the 4-H Leader resigns unexpectedly, or the club disbands after August 1, may substitute the County Educator signature for club organizational leader.*)
3. All participants must enter and participate in Fitting and Showmanship and the Written Test in order to be eligible to participate riding/driving classes. Showmanship exceptions need to be approved by the 4-H PDC, a written accommodation request needs to be submitted before the show. A formal inspection will need to take place before the animal can be shown in any class.

Health

1. Veterinary Check - Upon arrival, Tuesday, 5 PM through Wednesday 8:30 AM. All horse vehicles must unload in designated area for a brief health check. Animals must have approval to be admitted to the stabling area.
2. Negative Coggins Test and Rabies Vaccination - Proof of negative Coggins Test (past year or current year) and rabies vaccination (administered during current calendar year) must be on file in the 4-H Office in accordance with County Rules. Another copy must accompany the horse.

Stabling

1. Horses will be permitted on the grounds beginning at 5 PM on Tuesday and must be in place by 8:00 AM on Wednesday. Please arrive by 8:00 AM in order to clear the health check by 8:30 AM.
2. Stalls are assigned based upon pre-entries. Stall Cards are to be brought with you for mounting upon arrival.
3. Stabling area will be checked continuously to detect unsafe conditions. All problem situations will be referred to the 4-H Fair Show Management who will assign mandatory corrective action. Failure to comply with corrective instructions will result in exhibitor and animal being dismissed from fairgrounds.
4. Hay and Bedding - Members must supply hay, grain, water bucket, bedding (wood shavings), and all other needs for self and horse. Shavings may be purchased, see Schaghticoke Fair book for details.

5. Departure - due to stall limitations and incoming horses for open show events, 4-H exhibitors will be allowed to take their animals home immediately after the show officially ends (approx. 9:00 PM Thursday). **All horses must vacate the barn by 10:00 PM on Thursday unless arrangements have been made with the open show superintendent to remain. Exhibitors are to use the Exhibitor Gate when departing.**
6. Any members intending to camp during the 4-H Horse Show need to refer the rules associated with camping and complete the camper/tent form with the Schaghticoke Fair. A completed camper/tent form and full payment is due July 31st—directions are on the form. For those planning to participate in the Open Horse Show and stabling beyond the 4-H Horse Show must contact the Schaghticoke Fair.

Other Horse Exhibitor Information

1. All classes will be governed by the current NYS 4-H Horse Show Rule Book and Rensselaer County Supplemental 4-H Horse Rules.
2. Premiums - Each exhibitor will be eligible for three money premiums: one on the written test, one for showmanship, and one for their best performance class. Those exhibiting more than one horse will be eligible for the best performance points on each animal.
Class Value:
Written Test - Excellent 24; Good 16; Worthy 10
Fitting & Show - Excellent 34; Good 26; Worthy 18
Performance - Excellent 38; Good 30; Worthy 22

Only trophies and ribbons will be awarded for equitation classes in compliance with AHSA Rule XVIII, Section 5: "Offering money prizes in Equitation Classes for Junior exhibitors and amateurs is forbidden."

3. Classes with limited entries may be combined, and classes with large entries may be divided, at the discretion of the 4-H Fair Show Management.
4. The 4-H Horse Show Management may limit exhibitors to one horse entry if space limitations so require.
5. If any eliminations are necessary, they will be announced.
6. Horses must be kept in show ground area and may not go on fairways or racetrack.

Practice riding is allowed only in the designated ring with a supervising adult present. Horses must proceed at a

walk to and from barns and rings. Additional policies see posted barn rules.

HORSE HERDSMANSHIP

Clubs and members will present suitable exhibits, including stall cards, demonstrate care and concern for their animals, maintain their stabling areas aisles, and tack areas, and complete the final clean-up. Club decorations as appropriate are encouraged. Contact the CCE office for specifics on judging criteria.

NOVICE CLASSES (walk/trot only)

1. This class may only be entered by first- and second-year members or at the Horse Program Development Committee's discretion.
2. Novice participants are not eligible for championship classes or awards with the exception of the Kimberwicke Memorial class.
3. Novice participants are only eligible for Showmanship, Written Test, Costume, Special Performance, Grand Entry, Model Horse and novice designated riding classes.

SHOW CLASS INFORMATION

1. Written Test Classes must be pre-entered and are open to all 4-H Horse members.
2. Fitting and Showmanship must be entered by all members exhibiting, except when two members of the same age group share a horse. Only one will enter showmanship, but all may enter other classes.
3. Performance classes may be divided by age of exhibitor, size of animal, or level or experience. See County Rules and check current eligibility list for appropriate class to enter.
4. Age divisions refer to age as of January 1 of the current year.
5. Classes will be delayed no more than 5 minutes after the last call for the class.

Wednesday

All horse members will meet in the arena for announcements and opening ceremony, Time to be announced.

Show Schedules will be available at the August Horse Program Development Committee Meeting.

*Patterns for all Dressage Classes will be available from your horse leader or the CCE office.

*Western Riding Patterns will be available from your horse leader or the CCE office.

*Members may ride either English Dressage or Western Dressage, not both.

*All Hack classes are open to Level II and III Riders only. Extended gaits may/will be requested. *Members may only enter one hack class per seat.

*English Riders may only enter 1 English-type equitation class.

*Horsemanship classes are judged on the rail and an individual pattern.

*All patterns over fences will be posted at the show by Fair Committee.

Championship Events

CHAMPION SHOWMAN- Michael Gagliardi Memorial

An Invitational Class - First and Second Blue in Classes 114, 115 and 116. Class to take place following regular showmanship classes on Wednesday morning.

WESTERN CHAMPION RIDER- Will Rowe Memorial

An Invitational Class - first and second blue from classes 301, 302 and 303. To be judged at the end of the day on Thursday.

ENGLISH CHAMPION RIDER-

An Invitational Class - first and second blue from classes 201, 202 and 203. To be judged at the end of the day on Thursday.

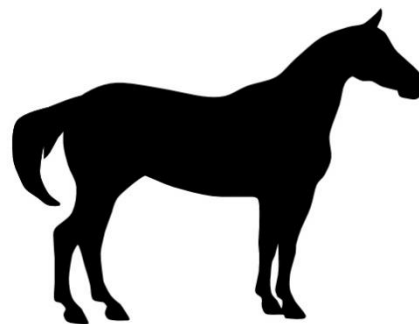
CHAMPION TRAIL-

An Invitational Class - first and second blues from classes 101, 102 and 103. To be judged at the end of the day on Thursday.

KIMBERWICKE MEMORIAL-

Open to the first blue of Novice classes—100, 120, 130, 140, 200, 210, 300 and 310. To be judged at the end of the day on Thursday.

No horses are permitted to leave until the conclusion of the Championship classes. Permission for early departure must be obtained from the 4-H Fair Show Management in the event of an emergency.



4-H Model Horse Show Classes

Rules

1. Each 4-Her may enter up to two models and therefore, may have two different entries. Each entry must be listed separately on the entry form.
2. Each entry will be judged individually using the Danish system with the exception of Cloverbud participants who will receive a participation ribbon.
3. Classes will be judged on the model's conformation as a representation of the breed and the exhibitor's knowledge of both the breed and the model.
4. Cloverbuds may bring a standard sized notecard with breed and model details for use during the class.
5. It is expected that the exhibitor be available to manage the model, to take it to the judging table and answer questions regarding the model. Adults are not permitted to assist.
6. Please do not pick up a model that does not belong to you.
7. Each model should have an entry tag fastened to a hind leg that cannot be easily removed. The back of the tag will provide the exhibitors entry number and the breed. Tags will be provided by the PDC.
8. Once a class has started, only the exhibitors, the judge and the ringmaster may be in the ring area.
9. The judge's decision is FINAL.

Guidelines

1. Exhibitors do not need show attire or helmets. Attire should be neat and presentable. Participants are encouraged to wear a 4-H shirt if possible.
2. The class is a breed class. Exhibitors should choose a model with correct conformation that best represents its breed. In addition, they should exhibit an understanding of the breed such as its origins and uses and knowledge of the model such as its color, markings and gait although the judge may ask any horse-related question(s) during the show.
3. At the start of each class exhibitors will enter the ring with their model(s) and their number. Exhibitors will carry their model(s) in the ring as directed and will then line up as directed. At line up exhibitors will place their number and model(s) on the table and wait for further inspection and direction.

Class No.

117 Cloverbud Model Horse (participation only)

118 Non-Cloverbud Model Horse
(Excellent-26, Good-16 and Creditable-10)

4-H Horse Classes *(Not the order of classes for show)*

Class No.

- 107 Cloverbud Teaser
- 117 Model Horse Breed–
Cloverbud (Up to 2 entries)
- 118 Model Horse Breed–
Non-Cloverbud (Up to 2 entries)
- 104 Junior Written Test (11 yrs. and under)
- 105 Intermediate Written Test (12-14 yrs.)
- 106 Senior Written Test (15 – 19 yrs.)
- 114 Junior Fitting and Showmanship
(11 yrs. and under)
- 115 Intermediate Fitting and Showmanship
(12-14 yrs.)
- 116 Senior Fitting and Showmanship (15-19 yrs.)
- 118 2021 Fillies and Geldings (2-year-old)
- 200 Novice Equitation English
- 300 Novice Equitation Western
- 201 Level I English Equitation
- 202 Level II English Equitation
- 203 Level III English Equitation
- 301 Level I Western Equitation
- 302 Level II Western Equitation
- 303 Level III Western Equitation
- 210 Novice Pleasure English
- 310 Novice Pleasure Western
- 211 Level I English Pleasure
- 212 Level II English Pleasure
- 213 Level III English Pleasure
- 311 Level I Western Pleasure
- 312 Level II Western Pleasure
- 313 Level III Western Pleasure
- 100 Novice Trail
- 101 Level I Trail
- 102 Level II Trail
- 103 Level III Trail
- 221 Level I English Dressage
- 222 Level II English Dressage
- 223 Level III English Dressage
- 321 Level I Western Dressage
- 322 Level II Western Dressage
- 323 Level III Western Dressage
- 140 Novice Pattern
- 218 Hunter Hack (Hunt Seat only with 2 fences)
- 208 Bridle Path Hack (English only)
- 307 Western Road Hack (Stock Seat only)
- 130 Novice Horsemanship
- 341 Level I Horsemanship
- 342 Level II Horsemanship
- 343 Level III Horsemanship
- 120 Novice Command
- 124 Junior Command (11yrs and under)
- 125 Intermediate Command (12-14 yrs.)
- 126 Senior Command (15-19 yrs.)
- 351 Level I Western Riding
- 352 Level II Western Riding
- 353 Level III Western Riding
- 231 Level I Equitation over Fences (Crossrails only)
- 232 Level II Equitation over Fences
- 233 Level III Equitation over Fences
- 234 Level IV Equitation over Fences
- 241 Level I Hunter over Fences (Crossrails only)
- 242 Level II Hunter over Fences
- 243 Level III Hunter over Fences
- 244 Level IV Hunter over Fences
- 504 Jr. Pleasure Driving
- 506 Sr. Pleasure Driving
- 514 Jr. Pleasure Driving Reinsmanship
- 516 Sr. Pleasure Driving Reinsmanship
- 524 Jr. Combination Riding and Driving
- 526 Sr. Combination Riding and Driving
- 138 Costume Class-
come as your favorite character, subject or theme,
open to all 4-H horse exhibitors
- 148 Special Performance (Not Judged)
- 404 Junior Pole Bending (13 yrs and under)
- 406 Senior Pole Bending (14 yrs and older)
- 414 Junior Barrel Race (13 yrs and under)
- 416 Senior Barrel Race (14 yrs and older)
- 424 Junior Keyhole (13 yrs and under)
- 426 Senior Keyhole (14yrs and older)
- 604 Junior Ranch Working Horse (13 yrs and under)
- 606 Senior Ranch Working Horse (14 yrs and older)

Rabbits

SECTION F: RABBITS

Show Thursday, 9 AM

Fair entry deadline for rabbits is August 10.

It is mandatory that all club and independent members be represented at fair cleanup day, in the Rabbit, Cavy, and Poultry Barn. Please note fair cleanup day is a carry in carry out day, there will not be any garbage service on the grounds. All exhibitors need to clean and put up their cage/s and cage bottom/s.

All Exhibitors need to provide their own feed that is well labeled for the week of the fair. The fair will provide shavings for the week.

Written Exams:

Written exams will be during the show, watch for time announcement. The goal is to have members take the exam after their animals are judged.

1. Maximum 4 entries per class/breed.
2. 4-H'ers must show their own animals, unless approved by the Rabbit/ Cavy Poultry PDC.
3. **Each rabbit exhibitor needs to sign up for at least 2 barn duties at the CCE office, ideally by or on fair clean-up day. Fair passes are contingent upon barn duty sign-up.** Members must be accompanied by an adult while on barn duty.
4. All rabbits must be owned and in the possession of the 4-H member by or prior to June 15th of the 4-H year. It is the responsibility of the leader or Independent parent to assure that no member shows a rabbit owned after the June 15th deadline.
5. All rabbit exhibitors are to provide their own non-spillable, non-breakable feed and water dishes (non-tipping water containers are required).
6. ****It is the responsibility of all 4-H exhibitors to complete comment cards for judging prior to the fair and present the day of the show.**
7. Rabbits are to be health checked and checked in between 2 and 7PM on Tuesday, or 8 to 10 AM on Wednesday. Class(es), ear tattoo, breed, and variety are to be included on entry forms.
8. Rabbits must be at least 3 months old, unless participating in 4-H Auction.
9. **NO DOES WITH LITTERS.**
10. Pregnant and sick rabbits may not be entered and are not to be brought onto the fairgrounds.
11. Exhibitors must participate in showmanship to be eligible to receive premiums. Showmanship exceptions need to be approved by the 4-H PDC, a written accommodation request needs to be submitted before the show. A formal inspection will need to take place before the animal can be shown in any class.
12. Exhibitors are responsible for having their cages cleaned and animals fed every morning by 9 Am.
13. All exhibitors are responsible for breaking down their cages after animals are released on Monday. All exhibitors must bring their own carrying cages.

Excellent - 16; Good - 12; Creditable - 8

Class No.

Using September 1 as age reference

- 1 **Junior Buck** Under 6 months - purebred (Commercial, and Fancy Breeds)
- 2 **Junior Doe** Under 6 months - purebred (Commercial, and Fancy Breeds)
- 3 **Intermediate Buck** 6 to 8 months – purebred (Commercial)
- 4 **Intermediate Doe** 6 to 8 months – purebred (Commercial)
- 5 **Senior Buck** Over 8 months – purebred (Fancy Breeds)
- 6 **Senior Doe** Over 8 months – purebred (Fancy Breeds)
- 7 **Senior Buck** Over 8 months – purebred (Commercial)
- 8 **Senior Doe** Over 8 months – purebred (Commercial)
- 9 **Pet Class Buck**
- 10 **Pet Class Doe**
- 11 **Meat Class** - Fryer, Roaster, Stewer, Pen of 3 Fryers (see auction criteria)
- 12 **Cloverbud Breed Class** - participation ribbon, any breed or pet variety

Showmanship

Excellent - 20; Good- 15; Creditable - 10

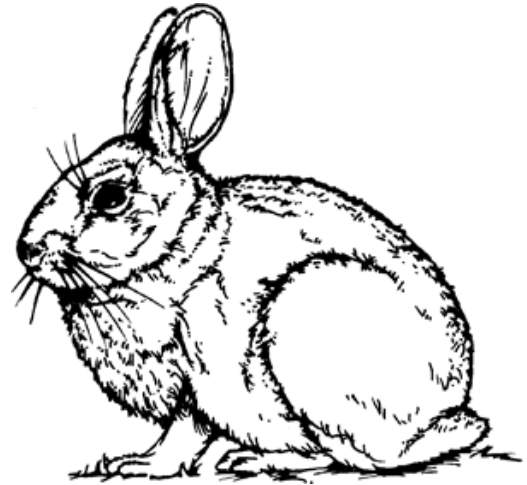
All Rabbit Exhibitors are to participate in showmanship in one of the below classes. Showmanship exceptions need to be approved by the 4-H PDC, a written accommodation request needs to be submitted before the show. A formal inspection will need to take place before the animal can be shown in any class. Traditional dress for showmanship exhibitors is clean white long-sleeved shirt with dark or tan pants. A 4-H shirt can be worn.

- 13 **Cloverbud Show & Tell** - participation ribbon
- 14 **Rabbit Showmanship Novice** for members exhibiting Rabbits for the first time
- 15 **Rabbit Showmanship Junior** for members 13 years and younger as of January 1st
- 16 **Rabbit Showmanship - Senior, for** members 14 years and older as of January 1st.
- 17 **Costume Class** - Prizes will be awarded the day of the show - participation ribbon
- 18 **Educational Club/Youth Exhibit**– Dept. 2, Section B. Can be displayed in barn ([see page 31](#))

Written Exam

Excellent - 20; Good - 15; Creditable -10

- 19 **Cloverbud Teaser**
- 20 **Novice Exam**-non Cloverbud aged youth showing for the first time.
- 21 **Junior Exam**—13 yrs. and under as of Jan 1st
- 22 **Senior Exam**—14 yrs. and older as of Jan 1st



Cavies

SECTION G: CAVY

Show Thursday, 9 AM

Cavies must be owned by June 15th of the project year. Fair entry deadline for cavies is August 10.

It is mandatory that all club and independent members be represented at fair cleanup day, in the Rabbit, Cavy, and Poultry Barn. All exhibitors need to put up their cages and cage bottoms.

All Exhibitors also need to provide their own feed that is well labeled for the week of the fair and be responsible for having their cages cleaned and cavies fed every morning by 9 Am.

1. Maximum 4 entries per class/breed/variety.
2. 4-H'ers must show their own animals. Conflicts will be considered at the discretion of the Rabbit and Cavy Program Development Committee upon individual requests in writing.
3. **Each cavy exhibitor needs to sign up for two barn duty slots at the CCE office, ideally by or on fair clean-up day. Members must be accompanied by an adult while on barn duty.**
4. **Fair passes are contingent upon barn duty sign-up.**
5. All cavies must be owned and in the possession of the 4-H member by or prior to June 15th of the 4-H year. (Junior cavies born to registered animals after June 15th may be shown by 4-H member who owns the dam.)
6. It is the responsibility of the leader or independent parent to assure that no member shows a cavy owned after the June 15th deadline.
7. All cavy exhibitors are to provide their own non-spillable, non-breakable feed and water dishes (non-tipping water containers are required).
8. All exhibitors are to set up their own cages and cage bottoms on fair cleanup day.
9. Cavies are to be health checked and checked in between 2 and 7PM on Tuesday, or 8 and 11 AM on Wednesday. Class, ear tag, breed, sex and variety are to be included on entry forms.
10. **NO SOWS WITH LITTERS.**
11. Pregnant and sick cavies may not be entered and are not to be brought onto the fairgrounds.
12. **Exhibitors must participate in showmanship to be eligible to receive premiums.** Showmanship exceptions need to be approved by the 4-H PDC, a written accommodation request needs to be submitted before the show. A formal inspection will need to take place before the animal can be shown in any class.
13. All exhibitors are responsible for breaking down their cages after animals are released on Monday. All exhibitors must bring their own carrying cages.
14. It is the responsibility of all 4-H exhibitors to complete comment cards prior to the fair to be presented and used for judging the day of the show.
15. Exhibitors are responsible for having their cages cleaned and animals fed every morning by 9 Am.

Written Exams:

Excellent - 20; Good - 15; Creditable - 10

16. **Cloverbud Teaser**- participation ribbon
17. **Novice Exam**– non cloverbud aged youth showing for the first time.
18. **Junior Exam** - members 13 yrs. and under as of January 1st
19. **Senior Exam** - members 14 yrs. and older as of January 1st

Class No.

Excellent -16; Good - 12; Creditable - 8

Using September 1 as age reference

- 1 **Junior Boar** - Purebred, up to 4 months of age or 12 to 22 oz. in weight
- 2 **Junior Sow** - Purebred, up to 4 months of age or 12 to 22 oz. in weight
- 3 **Intermediate Boar** - Purebred, up to 6 months of age or 22 to 32 oz. in weight
- 4 **Intermediate Sow** - Purebred, up to 6 months of age or 22 to 32 oz. in weight
- 5 **Senior Boar** - Purebred 6 months or older with weight over 32 oz.
- 6 **Senior Sow** - Purebred, 6 months or older with weight over 32 oz.
- 7 **Pet Class Boar**
- 8 **Pet Class Sow**
- 9 **Cloverbud Breed Class** - participation ribbon, any breed or pet variety

Showmanship

Excellent - 20; Good- 15; Creditable - 10

Traditional Dress: Clean white long-sleeved shirt with tan or dark pants. Exhibitors can wear a 4-H shirt.

- 10 **Cloverbud Show & Tell** - participation ribbon
- 11 **Cavy Showmanship Novice**- For members exhibiting Cavy for the first time.
- 12 **Cavy Showmanship Junior**- For members 13 years and younger as of January 1st.
- 13 **Cavy Showmanship - Senior** For members 14 years and older as of January 1st.
- 14 **Costume Class** – Prizes will be awarded the day of the show for participation-participation ribbon
- 15 **Educational Club/Youth Exhibit**– Dept. 2, Section B. Can be displayed in barn ([see page 31](#))

Sheep

SECTION H: SHEEP

Show & Shepherd's Lead line-Saturday 9:30am

Sheep must be currently vaccinated against rabies and must be accompanied by a CVI signed by an accredited veterinarian identifying the animals individually to be exhibited and indicating that the herd or flock has been inspected and found free from all contagious, infectious, or communicable diseases. Inspection shall have been made on or after May 1 of the current year. Certificate must be approved by the appropriate fair official before the animals are eligible for exhibition or competition. **Two animals can be leased per exhibitor as long as verification paperwork is completed by June 15th.**

If exhibiting in open, you must follow rules for Open Class.

1. All animals must be listed by ear tag or tattoo number on the entry blank. **All sheep must be identified by one of the following: 1) USDA approved tags, 2) a legible USDA approved flock tattoo and individual animal ID number or, 3) electronic ID if the sheep is enrolled in the Scrapie Flock Certification Program. Exhibitors must provide their own microchip reader. Official tags can be obtained by contacting USDA at 1-866-873-2824.**
2. Lambs shown in purebred classes that are under 1 year of age are not required to have registration papers, however, **they must have ear tags or legible tattoos**, and these numbers **listed on the entry blank.**
3. All animals must be shown according to breed specifications. (Market lambs **must be** slick sheared.)
4. Ram lambs are eligible for **either** the market class or the purebred classes, **but not both.**
5. Any sheep shown as a purebred may NOT be shown as a market lamb or in a pen of 3 market lambs. The single market lamb may be shown in a pen of 3 market lambs.

Sheep Fitting & Showmanship

Excellent - 34; Good - 26; Creditable - 18

All sheep exhibitors MUST enter a showmanship class. Showmanship exceptions need to be approved by the 4-H PDC, a written accommodation request needs to be submitted before the show. A formal inspection will need to take place before the animal can be shown in any class.

In making the awards, the judge shall consider the following points:

1. Control of the animal by exhibitor.
2. Skills in showing the animal to best advantage.
3. Cleanliness and condition of skin, coat, and feet.
4. Trimming to meet individual breed specifications.
5. Cleanliness and cooperation of exhibitor.
6. Exhibitor should wear tan or white pants and white shirt or T-shirt.
7. No farm names on exhibitors while showing in the 4-H show ring.

Class No.

3 Novice -

4-H members exhibiting sheep for the first time.

2 Junior -

13 years and under as of Jan. 1 of the project year.

1 Senior -

14 years and older as of Jan. 1 of the project year.

Shepherds Lead line classes will be evaluated based on lead line criteria available from your leader or 4-H office. 3 x 5 card description should be handed in by Wednesday evening at the CCE office in CCE Building on the fairgrounds. Lead Line will be judged at 1 PM on Saturday in the Sheep and Goat Barn.

200 Shepherds Lead Line with constructed garment (44-34-20)

201 Shepherds Lead Line with purchased or borrowed garment (34-26-18)

Mature Ewes - 2 years and over

(Excellent - 24; Good - 16; Creditable - 8)

Yearling Ewes -1 year and under 2

(Excellent - 24; Good - 16; Creditable - 8)

Ewe Lamb born since Sept 1

(Excellent - 16; Good - 12; Creditable - 8)

Ram Lamb born since Sept 1

(Excellent - 16; Good - 12; Creditable - 8)

Pen of three - comprised of three lambs of either sex all of the same breed/or grade
(Excellent- 16; Good - 12; Creditable - 8)

4-H Exhibitors Flock - will contain from one breed; a ram lamb and two (2) ewes from two different age classes (lamb, yearling or mature). All owned by the exhibitor.

(Excellent- 24; Good - 16; Creditable - 8)

Pair of Ewe Lambs - will contain from one breed 2 ewe lambs both owned by the exhibitor
(Excellent—24, Good—16, Creditable—8)

Daughter/Dam

(Excellent- 24; Good - 16; Creditable – 8)

4 Market Lamb - open to purebred, cross bred, colored or grade wethers, ram, or ewe lambs born after January of the current year.
(Excellent - 16; Good - 12; Creditable- 8)

5 Pen of Three (3) Market Lambs - requirements same as for Market Lambs. (2 animals must be entered in Class 4.)
(Excellent - 24; Good - 16; Creditable-8)

6 Fleece on the Hoof - Open to any 4-H sheep in the barn. Wethers may be exhibited in this class as well as rams and ewes. However, every animal will receive only one premium for their respective class in the show.

212 Shepherds Award - Members will be judged on their ability to present a good image to the public in presentation of their animals in the barn and willingness to work with others.

211 4-H Event - (Sheep to Shawl, Blocking and Trimming, Drop Spindle Demonstration, Round Robin, felting, etc.), to be scheduled
(Excellent-24; Good- 16; Creditable – 8).

150 Fleece Class - Open to any 4-H sheep project member. Not more than 2 fleeces per category per member which will be judged on the basis of cleanliness, uniformity, fiber quality, color or length. Fleeces are to be on exhibit in the Sheep Barn or 4-H Building (wherever space allows). Please indicate color and grade of fleece on the entry. (Excellent - 16; Good- 12; Creditable – 8)

Fleece Class (total of six (6) categories)

<u>White</u>	<u>Colored</u>
A. Fine	D. Fine
B. Medium	E. Medium
C. Coarse	F. Coarse



151 Handspun wool skein prepared by member
minimum of 2 ounces.

Consideration will be given to members based on their experience in spinning. You may enter up to 3 skeins, one in each of the following descriptive areas:

- 100% Natural Wool
- Blend of wool and other natural fibers
- Blend of wool and man-made fibers.

All skeins should have index cards attached describing:

- Breed of sheep
- method of preparation (i.e. hand carded, combed, commercially combed tops or roving)
- Contents of the fibers used.

(Excellent - 16; Good- 12; Creditable – 8)

Written Exam

Excellent - 20; Good - 15; Creditable -10

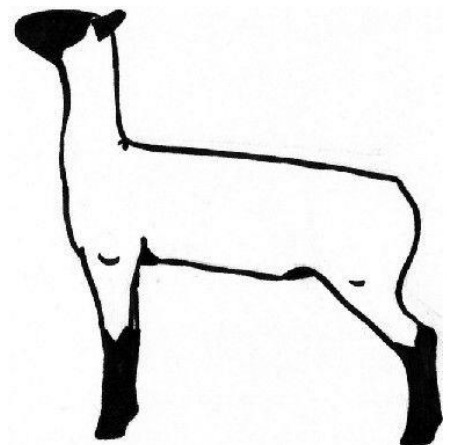
7 Cloverbud Teaser

8 Novice Exam-

non Cloverbud aged youth showing for the first time.

9 Junior Exam - 13 yrs. and under as of Jan 1st

10 Senior Exam - 14 yrs. and older as of Jan 1st



4-H Sheep Classes, Breeds and Numbers

Breed	Yearling Ram	Ram Lamb	Mature Ewes	Yearling Ewes	Ewe Lamb	Pair of Ewe Lambs	Pen of 3	Daughter Dam	Exhibitor Flock
Cheviot	11	12	13	14	15	16	17	18	19
Cotswold	21	22	23	24	25	26	27	28	29
Dorset	31	32	33	34	35	36	37	38	39
Horned Dorset	41	42	43	44	45	46	47	48	49
Hampshire	51	52	53	54	55	56	57	58	59
Navajo Charro	61	62	63	64	65	66	67	68	69
Natural Color	71	72	73	74	75	76	77	78	79
Romney	81	82	83	84	85	86	87	88	89
Shetland	101	102	103	104	105	106	107	108	109
Southdown	91	92	93	94	95	96	97	98	99
Suffolk	111	112	113	114	115	116	117	118	119
Tunis	141	142	143	144	145	146	147	148	149
Other Breeds	121	122	123	124	125	126	127	128	129
Grade	131	132	133	134	135	136	137	138	139

Swine

SECTION I: SWINE

Show Thursday, 6 PM

Swine must be currently vaccinated against rabies and must be accompanied by a CVI signed by an accredited veterinarian identifying the animals individually to be exhibited and indicating that the herd or flock has been inspected and found free from all contagious, infectious, or communicable diseases. Inspection shall have been made on or after May 1 of the current year. Certificate must be approved by the appropriate fair official before the animals are eligible for exhibition or competition.

All exhibitors must show in the Fitting and Showmanship Class. Showmanship exceptions need to be approved by the 4-H PDC, a written accommodation request needs to be submitted before the show. A formal inspection will need to take place before the animal can be shown in any class.

(Excellent - 34, Good - 26, Creditable - 18).

Showmanship awards will be determined based on the following criteria:

1. Control of the animal by the exhibitor
 - a. Must be identified by an official USDA approved ear tag. Radio frequency identification (RFID) tags are strongly recommended. Call NYS Ag & Markets: 518-457-3502
2. Skills in showing the animal to best advantage
3. Cleanliness of skin, coat and feet
4. Trimming
5. Cleanliness and cooperation of the exhibitor
6. Exhibitor should wear tan pants and a white shirt
7. No farm names on exhibitors while showing in the 4-H show ring.

Class No.

- 1 Novice Fitting and Showmanship -**
Open to members exhibiting swine for the first time.
- 2 Junior Fitting and Showmanship -**
Open to members 13 yrs. and under as of January 1.
- 3 Senior Fitting and Showmanship -**
Open to members 14 yrs and older as of January 1.
- 4 Market Hog (24 -16 - 8)**
- 5 Replacement Gilt (24 - 16 - 8)**
- 6 Sow (24-16-8)**

Written Exam

- Excellent - 20; Good - 15; Creditable -10
- 7 Cloverbud Teaser**
 - 8 Novice Exam -** non Cloverbud aged youth showing for the first time.
 - 9 Junior Exam -** 13 yrs. and under as of Jan 1st
 - 10 Senior Exam -** 14 yrs. and older as of Jan 1st

Poultry

SECTION J: POULTRY

Show Thursday, 3pm

Fair entry deadline for poultry is August 10.

Poultry (with the exception of doves, pigeons and waterfowl) must be accompanied by 1 OR 2:

1. Results of a negative Pullorum Typhoid test conducted within 90 days prior to exhibition.
2. Proof that the birds originated directly from a US Pullorum-Typhoid clean flock or equivalent flock. U.S. Pullorum-Typhoid clean or equivalent must be within 2 years of exhibition.

It is mandatory that all club and independent members be represented at fair cleanup day, in the Rabbit, Cavy, and Poultry barn. Please note fair cleanup day is a carry in carry out day, there will not be any garbage service on the grounds. All exhibitors need to put up their cages and cage bottoms.

1. A limit of two entries may be made in each class per breed/variety/poultry type (i.e. ducks/ turkeys/ chickens, etc.). Due to show limitations the 4-H exhibitor can bring a max of 20 birds*
2. Poultry are to be health checked and checked in between 2 and 7PM on Tuesday, or 8 and 10 AM on Wednesday.
3. Superintendent and respective 4-H Staff/Committee reserves the right to refuse to accept for exhibit any birds which show disqualifications, evidence of disease, parasites, or lack of maturity.
4. All birds must have been hatched by June 1 of current year.
5. The Fair will not be responsible for loss, damage, mistake or accident.
6. Exhibitors are responsible for cleanup, feed and water placement in the cages initially. Shavings, feed and fresh water will be supplied by the Fair to respective 4-H members on barn duty to service the

cages. **Showmanship is mandatory to participate in the 4-H Show and receive premiums.**

Showmanship exceptions need to be approved by the 4-H PDC, a written accommodation request needs to be submitted before the show. A formal inspection will need to take place before the animal can be shown in any class.

7. All birds removed from exhibit should be isolated
 8. from home flock for 3 weeks or used for market purposes.
 9. Breed and variety of bird must be given on Pre-Entry Form.
- Each poultry exhibitor needs to sign up for two barn duty slots at the CCE office, ideally by or on fair clean-up day. Members must be accompanied by an adult while on barn duty.**
10. Exhibitors are responsible for having their cages cleaned and animals fed every morning by 9 Am.
 11. General disqualifications: BIRDS HAVING ANY OF THE DEFORMITIES OR DEFECTS LISTED IN THE TABLE THAT FOLLOWS ([page 26](#)) SHALL BE DISQUALIFIED.

Poultry - Any Breed and variety

Class No.

- 577 Cock -** Over 1 year
- 578 Hen -** Over 1 year
- 579 Cockerel -** Under 1 year
- 580 Pullet -** Under 1 year
- 581 Young Trio* -** Under 1 year
- 582 Old Trio* -** Over 1 year
- 583 Market Fryers**
(Chickens under 13 wks. and over 6 lbs.)
- 584 Hen/pullet Pet -** not of pure breed/variety
- 585 Cock/Cockerel Pet -** not of pure breed/variety

*A trio consists of 3 birds - 1 male and 2 females

STANDARD POULTRY AWARDS

- Single Bird: Excellent - 16; Good - 12; Creditable - 8
Trio: Excellent - 24; Good - 16; Creditable - 8

Ducks, Geese, Turkeys and Miscellaneous:

Single Bird: Excellent - 16; Good - 12; Creditable - 8

Trio: 24-16- 8.

Any Breed

Class No.

608 Old Trio* - Over one year

609 Young Trio* - Under one year

610 Young Drake, Gander or Tom – Under one year

611 Young Duck, Goose or Turkey – Under one year

612 Old Drake, Gander or Tom – Over one year

613 Old Duck, Goose or Turkey – Over one year

614 Pheasant

615 Peacock

616 Meat (Turkeys over 18 lbs., and ducks & poultry under 9 wks. and over 4 lbs.)

**A trio consists of 3 birds – 1 male and 2 females.*

General Disqualifications

General Deformities

- Crooked Back
- Deformed beak
- A wing showing clipped flights or secondaries
- Slipped wing
- Split wing
- Twisted wing or tail feathers
- Entire absence of main tail feathers
- Decidedly wry tail (crooked)
- Decidedly squirrel tail (perpendicular to back)

Combs

- Lopped comb on single-comb varieties except Mediterranean females
- Rose comb falling to one side or so large as to obstruct sight
- Side sprigs on single comb varieties
- Split comb
- Comb foreign to breed
- Absence of spike on rose comb

Head

- Positive enamel white in face of Mediterranean cockerels and pullets
- Positive enamel white in ear (lobes) of male and female of American breeds

Shanks and Toes

- Stubs, feathers, or down on shanks, feet or toes (except Asiatic breeds)
- Leg or toe color foreign to breed
- Web foot

Color

- Red, white, or yellow feathers in any black variety
- Brown or buff in quills of primaries, color continued, or secondaries of white varieties
- Foreign color in any part of the plumage of white varieties, except slight gray ticking

4-H Poultry Classifications – Breed/Variety

American

- | | | |
|------------------------|-----------------------------|------------------------|
| • Barred Rock | • Buff Wyandotte | • SC Rhode Island Red |
| • White Rock | • Black Wyandotte | • RC Rhode Island Red |
| • Buff Rock | • Columbian Wyandotte | • New Hampshire |
| • Columbian Rock | • Partridge Wyandotte | • Black Giant |
| • Partridge Rock | • Silver Penciled Wyandotte | • Dominique |
| • Silver Penciled Rock | • Silver Laced Wyandotte | • Black Rock |
| • White Wyandotte | • Golden Laced Wyandotte | • Blue Laced Wyandotte |

Mediterranean

- SC White Leghorn
- RC White Leghorn
- SC Buff Leghorn
- SC Dark Brown Leghorn
- RC Dark Brown Leghorn
- SC Leg
- RC Light Brown Leghorn
- SC Silver Leghorn
- SC Anaconaht Brown Leghorn
- Blue Andalusian
- White Faced Black Spanish
- SC Black Minorca
- SC Buff Minorca
- Buttercups
- Black Leghorn

English

- White Orpington
- Buff Orpington
- Black Orpington
- Speckled Sussex
- Black Australorp
- Silver Gray Dorking
- White Cornish
- White Laced Red Cornish
- Dark Cornish

Continental

- Black Hamburg
- Silver Penciled Hamburg
- Golden Penciled Hamburg
- Silver Spangled Hamburg
- Golden Spangled Hamburg
- Lakenvelder
- White Crested Black Polish
- White Crested Blue Polish, pl
- White Crested Blue Polish, bd
- White Polish, pl
- White Polish, bd
- Silver Laced Polish, bd
- Buff Laced Polish, pl
- Buff Laced Polish, bd
- Mottled Houdan
- Salmon Faverolle
- Silver Campine
- Golden Campine
- Marans
- Bearded Model Ducel

Asiatic

- Light Brahma
- Dark Brahma
- Buff Brahma
- White Cochin
- Buff Cochin
- Blue Cochin
- Partridge Cochin
- Black Cochin
- White Langshan
- Black Langshan

Miscellaneous, Oriental

- White Frizzle
- Turken
- Japanese Phoenix
- Black Sumatra
- Naked Neck
- Araucana
- Americana
- Black Breasted Red Phoenix
- Any Other Variety

Games

- Modern Black Breasted Red
- Old English White
- Old English Black
- Old English Red Pyle
- Old English Black Breasted Red
- Old English Brown Red
- Old English Silver Duckwing
- Old English Golden Duckwing
- Old English Spangled
- Old English Wheaton
- Old English Crele

Commercial

- Commercial Layer Bird
- Commercial Meat Bird

Game Bantams

- Modern Blue
- Modern Black
- Modern Birchen
- Modern Red Pyle
- Modern Black Brown Red
- Modern Brown Red
- Modern Silver Duckwing
- Modern Golden Duckwing
- Modern Silver Blue
- Modern Lemon Blue
- Old English White
- Old English Black
- Old English Blue
- Old English Blue Red
- Old English Red Pyle
- Old English Spangled
- Old English Black Brown Red
- Old English Brown Red
- Old English Self Blue
- Old English Crele
- Old English Ginger Red
- Old English Blue Red
- Old English Brassy Back
- Old English Golden Duckwing
- White Laced Red Cornish- A
- White Cornish- A
- Dark Cornish- A

Bantams

- Silver Sebright – R
- Blue Wyandotte – R
- White Wyandotte – R
- Partridge Wyandotte – R
- Columbian Wyandotte – R
- Silver Laced Wyandotte - R
- Golden Laced Wyandotte -R
- Silver Penciled Wyandotte – R
- Buff Wyandotte – R
- SC Rhode Island Red – S
- RC Rhode Island Red – R
- SC White Leghorn - S
- RC White Leghorn – R
- SC Light Brown Leghorn – S
- RC Light Brown Leghorn - R
- SC Dark Brown Leghorn – S
- RC Dark Brown Leghorn – R
- Silver Spangled Hamburg - R
- White Crested Black Polish – A
- White Crested Blue Polish – A
- SC Anacona - S
- Salmon Faverolle – F
- White Polish, pl – A
- White Polish, bd - A
- Buff Polish, pl – A
- Buff Polish, bd – A
- Silver Polish, pl - A
- Silver Polish, bd – A
- Golden Polish, pl – A
- Golden Polish, bd - A
- White Silkie, pl – F
- White Silkie, bd – F
- Black Silkie - F
- White Langshan – F
- Black Langshan – F
- Black Wyandotte – R
- Golden Sebright – R
- RC Black – R
- RC Blue – R
- White Japanese – S
- Black Japanese – S
- Grey Japanese - S
- Black Tailed Japanese – S
- Mottled Japanese – S
- Light Brahma - F
- Dark Brahma – F
- Buff Brahma – F
- Mille Fleur, pl - F
- Mille Fleur, bd – F
- White Cochin – F
- Black Cochin - F
- Blue Cochin – F
- Buff Cochin – F
- Partridge Cochin - F
- Mottled Cochin – F
- Barred Cochin – F
- Red Cochin - F
- Birchen Cochin – F
- Brown Red Cochin – F
- Black Belgian - R
- Blue Belgian – R
- Quail Belgian – R
- White Rock - S
- Barred Rock – S
- Partridge Rock – S
- Columbian Rock - S
- Silver Penciled Rock – S
- Clean Leg White Frizzle – S
- White Frizzle Cochin - F
- Black Frizzle Cochin – F
- Porcelain
- Mottled
- S.C Black Leghorn
- Blue Silkie
- Buff Orpington
- Black Samatra
- Dutch Silver
- Buff Rock

SHOWMANSHIP

Excellent – 20; Good – 15; Creditable – 10

All Poultry Exhibitors are to participate in Showmanship in one of the below classes. A written approved conflict request needs to be made to the 4-H PDC before the show. Members with an approved conflict will be required to complete formal inspection before any class.

Traditional dress for showmanship exhibitors is a clean white long-sleeved shirt and dark, tan, or white pants.

Class No.

- 617 Cloverbud Show & Tell**
- 618 Novice Showmanship** - for non-Cloverbud aged youth who have never shown poultry before.
- 619 Junior Showmanship** - for members 13 yrs and under.
- 620 Senior Showmanship** - for members 14 and older.
- 621 Costume Contest** - (Thursday w/Rabbits and Cavies) Prizes will be awarded the day of the show-participation ribbon
- 622 Educational Club/Youth Exhibit** - Dept. 2, Section B. Can be displayed in barn (see page 31)

Written Exam

Excellent - 20; Good - 15; Creditable -10

- 623 Cloverbud Teaser**
- 624 Novice Exam** - Non Cloverbud aged youth showing for the first time.
- 625 Junior Exam** - 13 yrs. and under as of Jan 1st
- 626 Senior Exam** - 14 yrs. and older as of Jan 1st

Alpaca/Llama

SECTION K: ALPACA/LLAMA

Show Location & Time TBA

Fair entry deadline is August 10.

Classes will be judged in accordance with the ALSA Handbook, 14th edition. Rensselaer County 4-H Rules and Policy will take precedence over ALSA Handbook.

Health Requirements:

1. Certified Veterinary Inspection (CVI)/ Health Certificate dated after May 1 of calendar year.
2. Permanent identification of each llama must be listed on the CVI/Health Certificate, and verified upon arrival. The following forms of identification are acceptable:
 - a. Microchips are preferred
 - b. Tattoos, ear tags, and/or photo ID which has been signed by a veterinarian in current calendar year
3. Outwardly healthy and showing no evidence of infectious or contagious disease.
4. Must be negative to an approved test appropriate to detect Bovine Viral Diarrhea persistent infection (BVD-PI). The date and results of the testing must be noted on the certificate of veterinary inspection.
5. Proof of current Rabies vaccination is required. First Rabies vaccination received within 14 days prior to the date of the show will not be acceptable. First Rabies vaccination must be administered no less than 14 days prior to the fair.

Exhibitors

1. Footwear must cover the entire foot (no sandals or flip-flops).
2. Animals must be older than five months old on the day of the show.
3. Nursing crias may be allowed into the show ring with their dam.
4. Intact males two years old, or older, on the day of the show will not be entered.
5. The judge or superintendent has the option to dismiss any exhibitor with an unruly, distressed, or mishandled animal.
6. No more than two animals per stall.
7. 4-H club signage and educational displays are encouraged.

Showmanship

Excellent - 34; Good - 26; Creditable - 18

All 4-H entries are required to show in Showmanship to receive 4-H premiums. Showmanship exceptions need to be approved by the 4-H PDC, a written accommodation request needs to be submitted before the show. A formal inspection will need to take place before the animal can be shown in any class.

Criteria for Showmanship Judging

1. **Handler** - should be neat, clean, properly dressed, prompt, alert, confident, poised and courteous. Suggested dress is black pants and a white shirt.
2. **Animal and Equipment** – the animal should be clean, brushed out, in good condition with the toenails trimmed. The halter and lead should fit properly, should be clean, in good repair and safe.
3. **Showing the Animal** – this includes following directions, leading, turning, changing pace, backing, posing and positioning, showing the animal to its best advantage, controlling the animal on the lead and in the line and attention to the lineup.

Class No.

- 1 **Novice Showmanship** - for members who have not exhibited llamas or alpacas previously.
- 2 **Junior Showmanship** - 13 years and under.
- 3 **Senior Showmanship** - 14 years and older.

Obstacle and Pack Classes

Excellent - 24; Good - 20; Creditable - 8

Criteria

Demonstration of rapport, mutual confidence and trust between animal and handler. The animal should follow the handler through the course on a loose lead. The animal should be allowed the freedom to pause momentarily before attempting an obstacle. There will be penalties for the following categories of faults:

- **Handler Errors** including but not limited to tight lead, short lead, dangling free end of lead, inattentiveness to animal, lack of handler rapport, lack of flow and in pack class halter too tight for trail work.
- **Minor Faults** touching obstacles, too wide or tight of turns, slow response to handler's request, inattentiveness to handler, bad disposition or unwillingness, nervousness, agitation, fearfulness, poor jumping form, too slow of a pace through the course, moderate safety hazard. In the pack classes, improper placement of pack or filling out of panniers, improper cinching, dangling straps below the animal's knee.

- **Major Faults** knocking down of obstacles, stepping out of obstacle confinements, extreme irritation, spooking or nervousness, failure to execute a complete stop, major safety hazard, taking an obstacle out of order or backward, not executing obstacle completely, improper or unsafe knots when tying lead rope. In the pack classes, not accepting the pack, loosening front cinch before the back cinch, fastening any strap before the front cinch, losing pack or added items.
- **Off Course** not doing an obstacle, taking an additional obstacle, taking an obstacle out of sequence.

**Obstacle
Class No.**

- 4 **Novice** – For members who have not previously exhibited. The course will be made up of a minimum of 4 obstacles and no more than 8 obstacles.
- 5 **Junior** – for members who are 13 yrs. and under. The course will be made up of a minimum of 8 obstacles.
- 6 **Senior** – for members who are age 14 yrs. and older. The course will be made up of a minimum of 8 obstacles.

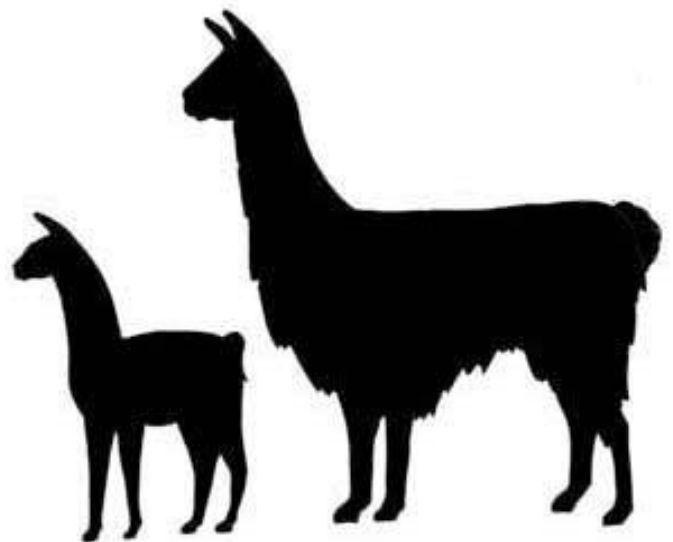


Pack

Class No.

- 7 **Novice** –for members who have not previously exhibited. The course will be made up of a minimum of 4 obstacles and no more than 8 obstacles.
- 8 **Junior** – for youth 13 yrs. and under, no less than 8 obstacles.
- 9 **Senior** – for youth 14 yrs. and older, no less than 8 obstacles.

For expanded explanations of classes and criteria refer to ALSA Rules, available through your leader or the CCE Office.



Department 2

Professional Development and Leadership

SECTION A

SPECIAL EVENTS

Class No.

- 1 Presentations** - Members who participated in County Presentations are eligible to give a repeat performance at the Fair. Call the CCE office to pre-register by Fair Cleanup day, preceding the Fair. (Excellent - 24; Good - 12; Creditable - Ribbon)
- 2 Fashion Revue** - Sunday, 6:30PM - In the CCE Building (meet at 6:00PM for Line-Up). Open to all 4-H members, including Cloverbuds, and open class exhibitors. Call the CCE office to pre-register by Fair Cleanup day, preceding the Fair. **Any Department 4 Section A or Section B entries, including, but not limited to, Fashion Revue items are eligible for the Fashion Revue.** Entries will be on display during the Fair. **Members will provide commentaries.** (Premium is 24 points for all non-cloverbud participants)

SECTION B

4-H EDUCATIONAL CLUB EXHIBITS

Class No.

- 1 Stationary Club Exhibit** - A display by 4-H Club, Teen Ambassadors, Teen Exchange Teen Council, or Award Trip delegates highlighting an aspect of the 4-H program. Exhibits must be in place by **10 AM** on the **Tuesday preceding fair opening.** Pre-register for a space by Fair Cleanup day by contacting the CCE Office. Display space is 4 x 4 x 4 feet. (Excellent - 40; Good - 32; Creditable - 24)
- 2 Working Exhibit** - A two-hour interactive presentation in the 4-H building by a club or team based on a club project or activity. Suitable for large or small animal or general interest projects. Call the CCE office to pre-register. (Excellent - 40; Good - 32; Creditable - 24)
- 3 4-H Club Banner** - Minimum dimensions 19" by 24". Banners will be judged on fabric selection, use of color, design and execution to promote 4-H. (Excellent – 14, Good – 10, Creditable – ribbon)
- 4 4-H Club Flag** - 3' by 5' flag to be displayed on a pole. Flag must have grommets or pole pocket. Design must be visible from both sides. Flags will be judged on fabric selection, use of color, design and execution to promote 4-H. (Excellent – 14, Good – 10, Creditable – ribbon)
- 5 Functional Project Club Exhibit** - When no less than 90% of a club's enrolled members each construct a large project suitable for use with their project animal entry (i.e. feed rack, tack box, saddle

rack, etc.) a club can request permission to have the items judged for premium points under the appropriate Department, Section and Class and then used where the animals are housed during the fair. To qualify, participating clubs must agree to set up a 4' x 4' x 4' Club exhibit in the CCE building detailing the construction and use of the functional equipment piece, featuring at least one example of the completed item. The exhibit will be judged based on Club Exhibit criteria, and must also contain a reference to where the items are being used on the fair grounds.

(Excellent-40, Good-32, Creditable-24)

Judging Criteria for Club Exhibits

Effectively communicates a coherent, clear, one-idea, easy-to-follow message. Arouses curiosity, is arranged systematically.	25
Effective use of motion, light, design and/or color to attract attention and reinforce the main ideas.	20
Effective use of well-worded, short catchy title, caption, or sign to cover topic and suggest appropriate action.	15
Promotes 4-H via knowledge and/or skills learned or community service.	15
Captions brief, easy-to-read. Charts, maps, and/or signs easy-to-read.	10
Presents neat, pleasing appearance.	10
Clear reference made regarding further assistance and more information about 4-H.	5
90 and above = Excellent	75-90 = Good

SECTION C

4-H SPECIAL INTEREST GROUP EXHIBIT

Clubs are ineligible in this area.

Special Interest Group entries must be of exceptional educational interest and should expand on a phase of the 4-H program. Groups planning such an exhibit must **Pre-register** for a space by Fair Cleanup day by contacting the CCE Office.

Plans must be submitted to the CCE office. Display space will be 8 x 4 x 4 feet. There will be a maximum of four (4) \$55.00 awards in this class. All exhibits must score over 75 points, according to the score card, to be eligible to receive a premium of \$55.00.

Special Interest Exhibits **must be in place by 10 AM, Tuesday** preceding fair opening. Name of special interest group and contact number for further information must be displayed.

Judging Criteria for Special Interest Group Exhibits

Effectively communicates a coherent, clear, one-idea, easy-to-follow message. Arouses curiosity, is arranged systematically.	25
Effective use of motion, light, design and/or color to attract attention and reinforce the main ideas.	20
Effective use of well-worded, short catchy title, caption, or sign to cover topic and suggest appropriate action.	15
Promotes educational value of Special Interest group.	15
Captions brief, easy-to-read. Charts, maps, and/or signs easy-to-read.	10
Presents neat, pleasing appearance.	10
Clear reference made regarding further assistance and more information about 4-H.	5
90 and above = Excellent	75-90 = Good

SECTION D

WORKSHOP ENTRIES

Excellent—10; Good—6; Creditable—Ribbon

If a member enrolled in a workshop **sponsored or approved by the CCE office** during the current 4-H year and **completed a project in an area for which she/he was not enrolled**, the project can be entered under WORKSHOP PROJECT. This will apply to projects completed at Pre-Teen Fun Day, Pre-Teen Adventure, Make It and Take It, and 4-H Educational Outreach.

SECTION E

EXHIBIT SERVICE AWARDS

(Teen Assistants)

Less than or equal to \$600 will be awarded up to 30 teen members. **Teens wishing to participate must notify the CCE office by Fair Cleanup day and keep record of duties completed during fair.**

Criteria for selection includes: past 4-H fair activities, exhibits in areas of highest interest, leadership abilities, and overall participation in the Fair.

Selection and supervision will be done by 4-H staff and Teen Ambassador Advisors. Teens will be asked to set up exhibits, assist at shows, do demonstrations, maintain exhibits, and much more.

SECTION F

4-H AFTER-SCHOOL

Excellent—10; Good— 6; Creditable—Ribbon

Members enrolled in a **4-H Afterschool** program during the current 4-H year may enter projects that they completed as part of that program **in 4-H Afterschool**. Examples of acceptable projects are 4-H Lab Books, Junior Master Gardener projects, or recycled/redesigned clothing or accessories.

SECTION G

COLLECTIONS

Excellent—10; Good— 6; Creditable— Ribbon

Collection must consist of no less than 5 or more than 10 articles. Each collection must be attached or mounted firmly to a backing, which must not bend. Examples: shells, insects, toy cars, dolls, buttons, rocks, bells.

See 4-H Curriculum **Collection Records— My Favorite Things**

Department 3

Environmental Education

SECTION A

ENVIRONMENTAL EDUCATION

Excellent – 10; Good – 6; Creditable – Ribbon
4-H Curriculum and Information can be found on the Cornell Cooperative Extension in the Department of Natural Resources www.dnr.cals.cornell.edu/

Class No.

- 1 Nature Trails** - Display of 4-H constructed nature trail or observation made along another nature trail.
- 2 Geology** - Simple collections must include the specimen's names, dates of collection, specific site(s) of collection (distance and direction to nearest town, county, state or province) and collector's name for 15 specimens. Inclusion of field journal is strongly encouraged and identification criteria must be completely and clearly defined. Exhibits showing evolutionary histories, adaptations of fossil organisms, vertical or horizontal studies of strata, or similar studies are encouraged.
- 3 Natural Resource Poster** – Showing the concepts learned in a natural resources project such as Environmental Awareness, Understanding Forest Ecosystems, etc. Must be ready to hang and include a written explanation detailing how it relates to wildlife management, conservation or natural resources.
- 4 Natural Habitat Photography** - Photo of natural habitat with written explanation of the shelter, water and food found there, include a photo of an animal native to that habitat. Must be mounted and ready for display.
- 5 Wildlife Dwellings** - A collection of actual dwellings of wildlife e.g. nests, insect galls and hives. Much care needs to be considered for personal safety as well as safety for the creature (can only collect during certain times of the year and be knowledgeable to know when a dwelling is abandoned and not in use). Dwelling to be entered with a description of creature's use of construction method and materials, as well as the date and location it was collected.
- 6 Wildlife Dwellings Photo** – This is the same as Wildlife Dwellings but in photographic documentation rather than actual dwelling structure. Must be mounted and ready for display.
- 7 Wildlife Hazard poster or photo display** – Include a minimum of three man-made items or conditions hazardous to wildlife, i.e., plastic waste, acid rain etc. Entry must include written description of problem and possible solutions.
- 8 Wildlife Farming poster or photo display**- Explain the creation and maintenance of a man-made habitat such as a fish farm, red worm compost box or meal worm farm etc. Must be mounted and ready to hang.
- 9 Wildlife Habitat Improvement** – An article, constructed item, or photographic display showing wildlife habitat improvement. This project should result in the improvement of, or creation of, a new habitat for wildlife, e.g. bird feeders, bat or blue bird boxes; photographic displays of a butterfly garden, creation of a brush pile habitat, the return of a portion of grass lawn to shrubs, or other protective wildlife habitat, etc.

SECTION B

FIELD IDENTIFICATION PROJECTS

Excellent – 14; Good – 10; Creditable – ribbon

Class No.

- 1 Field Identification Projects** - Collections of preserved specimens, photographs or sketches properly labeled and showing identification criteria may be displayed for any habitat in New York. Consult your local Department of Environmental Conservation for guidelines and permission in collecting specimens from the wild. Consult *Field Guides Made Easy* for additional activities and ideas.
- 2 Field Identification Notebook** - as called for in "Birds in Your Backyard" project guide.
- 3 Fern Collection** - 10 species pressed, identified and labeled following set curriculum.
- 4 Indigenous Plant Notebook** - Wildflowers labeled with both common and scientific nomenclature, from at least 10 different genera.
- 5 Edible Plant Notebook or Display Board** -a pressed collection of 10 species of plants that are edible by humans displayed following the labeling above with a short description of edible use and the edible portion of the plant. Display board must be ready for exhibition.

- 6 **Fungus Collection** - a minimum of 6 distinctly different kinds of fungi (mushrooms, toadstools, or bracket fungi). Collection must contain spring, summer, and autumn specimens and be labeled according to the 4-H manual "Fun with Fungi".
- 7 **Plant Collection Photo Display**- Photos must be taken by 4-Her. A minimum of 20 photos. The collection of 20 plants can be a combination of several types of plants such as trees, shrubs, weeds, annuals, perennials, fungi, etc. Identify common and scientific names. List variety, growing requirements, location of plant, where photo was taken, and identification sources.
- 8 **Plant Disease Collection** - a minimum of 15 diseased leaves or stems labeled with the name of the host plant and the disease following guidelines above. In notebook or display board ready for exhibition.
- 9 **Invasive Plant Display** - labeled following guidelines above with a description of their negative effects in the environment and how they affect habitats (e.g. purple loosestrife).
- 2 **Disease-Causing Forest Insect Collection** - a minimum of 5 disease-causing **insects** common to New York State. Specimens must be mounted on a firm backing. Injury to tree must be shown.
- 3 **First Year Project Exhibits** - Must include a minimum of 20 specimens representing 5 insect orders. Classification need not be taken further than order names. Insects should be pinned properly and the wings of all butterflies and moths must be spread.
- 4 **Second Year Project Exhibits** - Must include a minimum of 40 specimens representing 9 insect orders. Twenty specimens must have been collected during the current year. Twenty specimens must also be identified to common name with the name written on a label and pinned separately near the specimen.
- 5 **Third Year Project Exhibits** - Must include a minimum of 60 specimens representing 12 orders. 30 specimens must have been collected during the current year. 30 specimens must be identified to common name. 5 specimens (representing at least five families) must be identified to family. Scientific names (genus and species) should be included wherever possible, although insects from some orders will be difficult to identify to this level; common names should be placed on a separate label pinned near the specimen. Insects should be pinned properly and the wings of all butterflies and moths must be spread and at least two small insects must be mounted on points or minuten pins.

SECTION C FORESTRY

Excellent – 10; Good – 6; Creditable – Ribbon

- 1 **Tree Notebook** – based upon the *Know Your Trees* project. Specimens to be labeled with both common and scientific nomenclature and giving uses (following guidelines in the *Know Your Trees* project. *Beginner* - 5-10 species
Intermediate - 10 to 15 species; minimum of 5 conifers
Advanced - minimum of 25 species; minimum of 8 conifers
- 2 **NYS Wood Collection** – Displays and presentations may be based upon, but are not limited to, the following projects: *Know Your Trees*, *Timber Management for Small Woodlands (IB 180)*; *Wildlife and Timber from Private Lands: 4-H "Follow the Path"*, *Trees: Dead or Alive*, *Know Your Tree Diseases*, *Maple Syrup Production for the Beginner*; and other forestry exhibits based upon national, regional, county or self-initiated projects.
- 6 **Fourth Year (and beyond) Project Exhibits** - Must consist of general collections. Must include 80 specimens representing at least 12 orders. 40 specimens must have been collected during the current year. 40 specimens must be identified to common name. At least 10 specimens (representing at least 10 families) must be identified to their family. Scientific names should be included wherever possible. Common names should be placed on a separate label, pinned near the specimen as in Class No. 2. Proper mounting (pinned properly, wings of Lepidoptera spread, two small insects on points or minuten pins) will be strongly emphasized.

SECTION D ENTOMOLOGY

Excellent – 14; Good – 10; Creditable – Ribbon

- 1 **Insect Investigation Journal** - a journal recording the capture and identification of insects based on the *Insects All Around Us* activity guidebook.

SECTION E FISHERIES AND AQUATIC RESOURCES

Excellent – 14; Good – 10; Creditable – Ribbon

Exhibits may be displays or records of any Fisheries and Aquatic Resources related activity including but not limited to fishing techniques, aquatic sampling methods, aquatic insect ecology, habitat improvement or fisheries management and biology as found in *Exploring Freshwater Fisheries, Guide to Freshwater Fishes of New York, Let's Go Fishing, Let's Go Ice Fishing, or Basic Fly Tying*.

- 1 **Water Monitoring Projects** as found in *Water Worlds, Water Wise, or There's No New Water*.
- 2 **Fish and Fishing Projects** to include fish or fishing (for example mariculture, aquaculture, commercial fisheries, sport fisheries or related equipment, skills or observations).

SECTION F RESOURCE-BASED RECREATION

Excellent – 10, Good – 6, Creditable – ribbon

OUTDOOR ADVENTURES

- 1 **Hiker's First Aid Kit** – First Aid Kits should follow the guidelines on page 20 of the Outdoor Adventures "Hiking Trails" project.
- 2 **10 Hiking Essentials** – A stuff sack or other easy to pack container with all of the 10 Hiking Essentials as described on page 8 of the Outdoor Adventures "Hiking Trails" project.
- 3 **Beginner Hiking Notebook** – Notebook must include a Cover and Title Page designed and decorated by the participant (Title Page should include a title, the participant's name, 4-H Club, and the year), a Beginner Hiking Record Sheet, a Record of Participation (for example a written reflection, illustration or photograph relating specifically to the activity) from two activities from the Outdoor Adventures Guide Series, as well as one Hiking Journal entry for each hike. Total mileage for the hikes must add up to at least 5 miles.
- 4 **Shooting Sports** – any exhibit or record based upon content of the NYS Shooting Sports Programs.

SECTION G RECYCLING

Excellent – 10, Good – 6, Creditable – ribbon

ALL entries must include a description of the recycled materials (found on page 55) and must demonstrate practical and useful ways to REDUCE trash through REUSE. Explanation may be typed or hand-written.

- 1 **Natural Science Recycled Item** – Any feeder, nest box or other item for use by wildlife, made out of recycled materials.
- 2 **Recycled Article** - Decoration, accessory or ornament. Must contain 80% recycled paper, plastic, metal, wax, etc. Item will be judged on function, durability, creativity, and appearance.

Department 4

Family and Consumer Sciences

SECTION A CLOTHING

Excellent - 14, Good - 10, Creditable - Ribbon

Class No.

- 1 Beginning Sewing** - Skills may include seams, pressing, casing for elastic, facing, hems, raglan and dolman sleeves, straps or belt loops, gathering and waistband.
- 2 Intermediate Sewing** – Skills may include gathering, collar, set-in sleeves, plackets and cuffs, zipper, pockets, pleats, plaid, snaps, hook/eye machine buttonholes.
- 3 Advanced Sewing** – Skills may include specialty fabrics, plaids and stripes, lining, bound buttonholes, welt pockets, tailoring.
- 4 Creative Clothing** - Garment constructed from member's original design or combination of patterns.
- 5 Wearable Accessories, Sewn** - An item created by the exhibitor, which has a decorative and/or functional purpose.
- 6 Historically Accurate Clothing, Sewn** - Clothing made using materials and construction techniques appropriate for period clothing. Exhibit does not have to use the exact fabric or technique but there should be evidence of effort.
- 7 Costumes**– Made using materials and construction techniques appropriate for the costume design and use. For example, if the costume is to be worn only once in a school play, the “look” of it from a distance will be more important than neat sewing.
- 8 Purchased Garment** - Entries in this class should reflect wise consumer decision-making. Garment or outfit must be accompanied by an 8 ½” x 11” information notebook. The notebook must include the following (1) color photo of entrant wearing garment or outfit – label photo with name, county and color of complexion, hair and eyes; (2) cost of garment – include price tags or information, itemized comparison of cost to make garment – consider cost of fabric, notions, pattern, labor, etc. (3) story that describes: a) why garment was purchased; b) how it fits into wardrobe; c) fabric structure, fiber content and care; d) simple accessories selected; and e) activities for which garment will be worn. For reference see the 4-H Curriculum Clothing Decisions.
- 9 Recycled Garments** - Examples include remodeled or renovated garments. The garment must be made of least 80% recycled materials. The garment will be

judged on appearance, creativity, and durability. Entry must include a description of the recycled materials and must demonstrate practical and useful ways to REDUCE trash through REUSE. Explanation may be typed or hand-written.

SECTION B TEXTILE ARTS

Excellent – 10, Good – 6, Creditable – ribbon

Please include the source or pattern (it is recommended to include the pattern envelope and/or directions if possible.)

- 1 Textile Arts** - apparel made using a form of textile art other than sewing.
 - Hand smocking
 - Crewel
 - Embroidery (includes Huck Embroidery and/or Swedish Weaving)
 - Crocheted Article
 - Crocheted Sampler—at least 6 stitches
 - Counted Cross Stitch
 - Knitting
 - Knitted Sampler—at least 6 stitches
 - Hand-weaving
 - Macramé
 - Macramé Sampler— at least 6 knots
 - Needlepoint
 - Needlepoint Sampler—at least 6 stitches
 - Patchwork - Hand-sewn
 - Patchwork - Machine sewn
 - Quilting/Patchwork Sampler or Pattern File—at least 6
 - Quilting—Hand or Machine sewn
- 2 Embellished Clothing** - Purchased item decorated by machine or hand embroidery, silk screen printing, tie dying, fabric paint, or appliqué. Article will be judged on appropriateness of design and method of application suitable to the article of clothing.

SECTION C FABRIC FURNISHINGS & ACCESSORIES

Excellent – 10, Good – 6, Creditable – ribbon

Class No.

- 1 Equipped Sewing Box** - A box or appropriate container decorated by the member including three or more accessories made by the member, e.g. pin cushion, needlebook, scissors guard, thimble holder. Basic sewing equipment such as scissors, or cardboard model, pins, needles, tape measure must also be included.

- 2 **Decorated Accessory** - All articles such as bulletin boards and pictures must be ready to hang with appropriate hardware attached. More than one entry may be made per class. Each entry must be different. Some examples would be decoupage, stenciled, painted or finished room accessory like a bulletin board, wastebasket, shelf, lamp shade, coordinated ensemble of non-sewn decorated items etc.
- 3 **Recycled Non-Apparel, Sewn** – Examples include remodeled or renovated items that are not clothing. For example – jeans turned into grocery/all-purpose bags, t-shirts turned into a purse, towels turned into a dog toy, etc. Entry must include a description of the recycled materials and must demonstrate practical and useful ways to REDUCE trash through REUSE. Explanation may be typed or hand-written.
- 4 **Non-Apparel, Sewn** – Examples include outdoor equipment such as backpack, tent, sleeping bag; articles for a horse such as saddle pad, cooling sheet, saddle bags or recreational items such as kites and toys. For reference see the 4-H Curriculum Simple Gifts and The Flight/Fabric Connection.

SECTION D

CHILD DEVELOPMENT

Excellent - 10; Good - 6; Creditable - Ribbon

Class No.

- 1 **Creative Plaything** – A homemade toy, book, game or activity to be used with children. Include age of child intended to use article and what child will learn from article.
- 2 **Poster** – About safe babysitting/child care practices or about child development stages.
- 3 **Babysitter's Kit** – including games, toys, and safety materials needed while caring for a baby, toddler, or preschooler. Include explanation of planned use of articles in kit.

SECTION E

LEATHER

Excellent - 10; Good - 6; Creditable – Ribbon

Class No.

- 1 **Beginning Leather Article** – Precut item with simple tooling, with or without lacing. Examples - Tom Thumb Purse; Wallet (simple); Comb Case, etc.
- 2 **Intermediate Leather Article** – Item may be precut but must be constructed by the member.
- 3 **Advanced Leather Article** – Item must be cut and constructed by the member.

SECTION F

FOOD & NUTRITION

More than one entry may be made in a class, but type or variety must be different. **A recipe may be used in one class only.**

Excellent – 10; Good – 6; Creditable – Ribbon

General Guidelines

- All baked entries must have been baked (in the oven) from scratch by the exhibitor. No ready-made refrigerated or frozen dough, pastry crust or box mixes are permitted.
- No exhibits requiring refrigeration (cream or custard-based pies, cakes) are allowed.
- The goal is to encourage the mastery of skills. Fewer ingredients generally means a simpler recipe. The more experienced 4-H member is encouraged to exhibit a more difficult recipe.
- Remove all items from baking pans (except pies) and exhibit on paper plates or foil-wrapped cardboard. Do not bake muffins or cupcakes in paper liners.
- Include typed or handwritten recipe-card sized description including product name, ingredients, preparation steps, and yields with all baked entries.
- An entry is:
 - 3 samples of small items** (cookies, muffins, cupcakes, rolls, breadsticks, pretzels, or similar products);
 - one-half (1/2) of a large item** (loaf of bread, coffee cake, undecorated cake or similar products);
 - or the entire item if needed to convey appearance of product** (braided or shaped bread, decorated “cakes”, pies, etc.).

Class No.

- 1 **Cookies: Drop, Hand-shaped, or Rolled** - Examples: drop - chocolate chip, applesauce, oatmeal; hand-shaped – peanut butter, snickerdoodles, crinkles; rolled – cutout sugar, gingersnaps. No frosting; hand-shaped cookies can be rolled in sugar, as required.
- 2 **Cookies: Pan-baked** - Examples: date bar, pumpkin bar, brownies or other batter cookie. No frosting or decorations that are not part of the batter.
- 3 **Muffins** - Examples: plain, whole wheat, cornbread, bran, apple, etc.
- 4 **Biscuits or Scones** - Examples: plain, whole grain, flavored, or other shaped (rolled & cut).
- 5 **Loaf Bread (not yeast leavened)** - Examples: coffeecake, pumpkin, applesauce, or banana.
- 6 **Yeast Rolls** - Plain, whole grain, flavored or other yeast rolls of any shape; does not include fancy rolls with fillings or frostings.

- 7 Yeast Bread** - Plain, whole grain, flavored, or other, baked in a loaf pan.
- 8 Shaped Bread** - An exhibit is any small (such as pretzels or breadsticks), or large (such as animal shaped) hand shaped bread. Plain, whole grain, flavored, or other; does not include fancy yeast breads with fillings or frosting.
- 9 Cakes** - Exhibit will consist of the following: (1) plain (e.g., spice, chocolate, yellow) cake baked in an 8-9" round or square pan, or (2) foam-type cake (angel food, sponge, chiffon) baked in a 9-10" tube pan.
- 10 Pies** - Baked unfilled pie shell, double crust fruit pie, 3 fruit turnovers, 3 fruit tarts. **Crumb crust pies are not eligible for entry.**
- 11 Decorated Foods** - Entries will be judged on their visual appeal, not on taste; therefore, in the intermediate and advanced cake decorating categories non-edible forms may be decorated.
- 12 Foods Cooked in Microwave** - Muffins, cake, fruit crisp and bread are acceptable.
- 13 Modified Recipe** - Any food item from a recipe that the 4-H member has modified to improve flavor, appearance, or nutritional value. Include original and revised recipe and an explanation of why the modification was made.
- 14 Healthy Baked Product**— An exhibit is any baked product that is made with less sugar, fat or salt, altered using a sugar or fat substitute or gluten free. The recipe must clearly state ingredients and methods used. An explanation of why you made it healthy, made changes to the recipe or used gluten-free ingredients must be included. Cookie, loaf bread, cake, cupcake, coffee cake, muffins, pies or other baked items.
- 15 Grown in New York** – A food item produced with ingredients grown in New York State (products like maple syrup, maple sugar, or honey; or recipes using NYS fruit, vegetables or grains). Entries must include a typed or handwritten index-card sized description of: (a) the process or recipe and (b) where the NYS ingredient was grown or purchased. NYS ingredient can be garden, U-pick or roadside stand, farmer's market, or commercial market **if NYS origin can be proven.**
- 16 Heritage Foods** – Entry is sample of any baked item associated with family traditions or history and must include a typed or handwritten index-card sized description of: (a) recipe, and (b) family history and traditions associated with the food.
- 17 International Foods** – Entry is a sample of any baked item associated with customs or traditions of a country or ethnic group. Must include a typed or handwritten index-card sized description of (a) recipe, (b) ethnic background, and (3) traditions associated with preparing, serving, and eating the food.
- 18 Healthy Recipes Collection** – An exhibit is at least 6 recipes (displayed in a box, notebook, or file folder; can include photos or illustrations) that provide needed nutrients while limiting fat and total calories. For each recipe state: (1) relationship of key ingredients to MyPlate (2) nutritional benefit; (3) source of recipe; (4) how well it was liked; (5) any changes you would make in the recipe. All recipes must be collected and made during the current enrollment year.
- 19 Heritage Recipe Collection** – Entry is at least 6 recipes made and sampled by member (displayed in box, notebook, or file folder, can include photos or illustrations) that depict family or local history. For each recipe include a typed or handwritten description of: (1) source of recipe; (2) history related to recipe; (3) traditions related to preparing, serving, and eating the food. The collection should represent one or more generations older than yourself and can be collected from family, friends, or other community sources. All recipes must be collected and at least four prepared during the current enrollment year.
- 20 Healthy Snack** – this may be an actual food exhibit, poster, photos or may include faux food. The idea is to prepare an example of a healthy snack that you might have yourself or may prepare for friends. Actual food exhibits must be able to be presented without the need of refrigeration. Examples of Healthy Snacks: veggie platter, smoothie, cheese and crackers, fruit kabobs.
- 21 Packed Lunch** – Entry is to be presented in a lunch bag or box. Display may include photos or artificial food, if actual items will not hold up. Include a statement that explains the dietary needs of individual who will eat the lunch (a 3rd grader will require less food than a high school athlete); where the lunch will be eaten (on a trail ride, on a bus, or in a lunchroom); and the nutritional value of the lunch.
- 22 Menu for a Day** – The menu should include complete listing of all meals and snacks that would be eaten over a one-day period. A description of individual or family for whom meals are intended must be included. Typed exhibit with photos is recommended, creativity is encouraged.

23 Food Technology Exhibit — Exhibit to include a food product prepared using new technology or a non-traditional method (i.e. bread machine, cake baked in a convection oven, baked item made in microwave, etc.). Include recipe and why you used this method.

PRESERVED FOODS

Any processed food, including dried, foods and maple syrup will be evaluated based on appearance and process used. Because of food safety concerns, the entry will not be tasted.

Canned Foods

- Use only United States Department of Agriculture (USDA) tested and approved recipes. Use only up-to-date (1994 or later) USDA approved recipes. Approved recipe sources include:
 - **National Center for Home Food Preservation** at <http://www.uga.edu/nchfp/>
 - **So Easy to Preserve**, University of Georgia
 - Your local Cornell Cooperative Extension Office
 - **Ball® Blue Book**
- **Canned exhibit consists of one clear-glass Standard Mason jar processed with a self-sealing, two-piece lid.** (metal lid and metal ring)
- Jars must be free of cracks, chips, etc.
- Each exhibit must be vacuum sealed.
- Rings should have been removed after processing and cooling in order to clean and store the canned good. Rings may be put back on for transport, but removed for judging.
- Top of jars must be labeled with the product and date processed. Do not put labels on the sides of the jars.
- Attach a separate card securely to the exhibit that includes the following information:
 - The Recipe and Recipe Source
 - Contents
 - Type of pack (hot or raw)
 - Type of processing (boiling water bath or pressure canner)
 - Processing time
 - Altitude adjustment if required
 - Headspace
 - Date of processing
- Appropriate head space requirements must be followed. In general – Fruit Juices ¼ inch; Vegetables ½ inch; Jams and Jellies ⅛– ¼ inch; Pickles ½ inch; Tomatoes ½ inch, or according to USDA approved recipes.

- Foods processed and packages not following current (1994 and later) USDA recommendations, Paraffin sealed jams and jellies jars with zinc lids, foods in green jars or non-standardized jars, jars with more than 2 inc headspace, and jars or food that were made and processed over one year ago will be disqualified.

Class No.

24 Canned Food – To include: canned fruit, vegetable, tomatoes, juice, pickles, relish, jam, jelly, marmalade. or pie filling.

Dried/Dehydrated Foods

- Dried foods must be displayed in either clear one-half pint zip closure bags or glass jars with tight fitting lids.
- Top of jars must be labeled with the product and date processed. Do not put labels on the sides of the jars.
- Attach a separate card securely to the exhibit and include:
 - Method of drying (Dehydrator, oven)
 - Time and Temperature of drying
 - Pre-treatment method (if used)

Class No.

25 Dried/Dehydrated Foods—To include dried vegetables, dried fruit, leathers, or herbs.

26 Maple Syrup Products – An exhibit will consist of homemade maple syrup in a clear glass bottle appropriate for syrup products. A card will be attached to the entry with the process used to make the syrup and the resource(s) of their information.

27 Pet Treats— An exhibit will consist of 3 samples or 1 cup mix of baked treats for dogs, horses, etc.. Will be evaluated on appearance, smell, and texture.

Department 5

Science and Technology

SECTION A WOOD SCIENCES

More than one entry may be made per class. Any wet paint will result in disqualification.

Excellent - 12; Good - 8; Creditable - Ribbon

Class No.

- 1 Hand Tool Division** - Any article made in a Wood Science Project that was cut out, assembled and finished with hand tools only.
- 2 Power Tool Division** - Any article made in a Wood Science Project that has been partially or totally completed with power tools.
- 3 Kit Division** - Any article that has been made in a Wood Science Project from materials precut by an outside source (i.e., CCE office, commercial supplier or woodworking leader) but is assembled and finished by the exhibitor. Judges will place emphasis on the quality of workmanship performed by the exhibitor. It is important to remember that the level of difficulty must rise accordingly with the number of years in project work.
- 4 Wood Carving, Wood Sculpture**
- 5 Refinishing** - One article refinished with a natural wood finish.
(Excellent - 10; Good- 6; Creditable – Ribbon)

SECTION B ELECTRICAL SCIENCES

(Excellent - 12; Good - 8; Creditable – Ribbon)

Class No.

- 1 Electrical** - Article made in an Electric Project, such as a trouble lamp, test lamp, portable bench light, extension cords, pin-up or study lamp, or the rewiring of an old lamp is acceptable.
 - Tension restraint device must be in place. Where appropriate Underwriters Knot should be used, especially in lamp sockets.
 - Due to safety code compliance, molded polarized and/or prefabricated cords with polarized plugs; where applicable are allowed.
 - Lamps without bulbs will not be considered complete and will be evaluated accordingly.
 - Projects involving both woodworking and electrical tasks will be evaluated on the merits of both.

- 2 Electronics** - Article made in an Electric Project utilizing principles and construction procedures relating to electronics is acceptable.
 - Projects will be evaluated on the basis of soldering and connection techniques, neatness of assembly and other assembly procedures for electronic projects.
 - Projects must be hand wired and no breadboard kits will be accepted.
 - Project must be operable (i.e. contain all necessary batteries).
 - A short explanation of why or how the exhibit works and what use it has must be included.

SECTION C ROCKETRY

Class No.

- 1 Any rocket made in a rocket Program from a kit;** totally assembled and finished by member. Rocket will be checked for workmanship, sanding, smooth paint job, and stability. Rocket only should be presented to judge.
(Excellent 10; Good – 6; Creditable – Ribbon)
- 2 Any rocket made from non-kit materials;** totally constructed and finished by member. **Rocket** will be checked for workmanship, sanding, smooth paint job, and stability. **Rocket** only should be presented to judge.
(Excellent – 14; Good – 10; Creditable – Ribbon)

SECTION D TRACTOR OPERATION

Event scheduled for Sunday at 4pm in the Agriculture Equipment demonstration ring. Participants must register with the CCE office, call for more details by August 10th.

Excellent - 14; Good - 10; Creditable - Ribbon

Class No.

- 1** Open to any 4-H member who has earned their Tractor Operator Certificate and/or are 16 years old and older. There will be a written and a driving component.

SECTION E

RENEWABLE AND SUSTAINABLE ENERGY AND CLIMATE CHANGE

(Excellent—14; Good –10; Creditable—Ribbon)

Class No.

1 Educational exhibits/display(s) describing your 4-H project work done in the areas of: Renewable Energy (solar, wind, geothermal, bio fuels, hydro-electric), Energy Conservation (home, community, or school), Tracking (or studying) Climate Change, Activities/Studies related to managing “Carbon Footprints” in the environment.

- Exhibits may consist of stationary or working models, posters, photo story/display. A short description of what was undertaken in the project, your experience, and what you learned through the project must be included. This can be included in the entry, itself, or on the exhibitor’s information card.

SECTION F

SCIENCE EXPERIMENTS AND EXHIBITS

(Excellent—14; Good—10; Creditable—Ribbon)

Class No.

1 **Citizen Science**— The engagement of public participants in real-world scientific collaborations— asking questions, collecting data, and/or interpreting results. A display or record of participation in a Citizen Science project could be part of a local, regional, national or international project, but needs to include some kind of connection to scientists, researchers, or policy makers and contribute to scientific knowledge that will be put to some type of use (by researcher, policy makers, etc.) Examples include: Wasp Watchers, Project Feeder Watch, eBird, Lost Ladybug, Adopt a Pixel, Nature’s Notebook, or a local project.

SECTION G

3D PRINTING

(Excellent—14; Good –10; Creditable—Ribbon)

3D printing uses plastic or other materials to build a 3-dimensional object from a digital design. Youth may use original designs or someone else’s they have redesigned in a unique way. Youth must bring their finished printed object. Exhibits will be judged based on the complexity of the design and shape. Must include the following.

- Software used to create the 3D design.
- Design or, if using a re-design, the original design and the youth’s design with changes.

Class No.

1 3D Prototypes — 3D objects printed as part of the design process for robot or other engineering

project. Must include statement of what design question the prototype was supposed to answer and what was learned from the prototype.

2 3D Unique Objects — 3D objects printed for their own sake. May be an art design, tool, or another object.

SECTION H

COMPUTER SCIENCE

(Excellent– 14; Good– 10; Creditable– Ribbon)

Exhibits must include something visual, such as a poster or copy of digital presentation, which will remain on display for duration of the fair. Programs available online (such as Scratch) should include a link to specific project youth have created.

- 1 **Beginning Programming**– Exhibit a simple program using Scratch or another simple graphic programming language. Program should include 8 different commands including looping.
- 2 **Intermediate Programming**– Exhibit a program using Scratch or other simple graphic program that you have downloaded from internet and modified. Compare two programs and demonstrate the changes that were made to the original program; or create an animated story or video game using Scratch, Bloxels or other simple graphical programming language.
- 3 **Advanced Programming**– Exhibit an original program using higher level programming language such as python, JavaScript, C, C++, etc.
- 4 **App Development**– Exhibit an original mobile app. Describe the purpose of the app and what inspired you to create it in exhibit statement.

SECTION I

MAKER/ TINKER

(Excellent– 14; Good– 10; Creditable– Ribbon)

Project should communicate what problem is being solved or idea that was created. Include brief description of exhibit, list of materials, explain use of project and what skills were developed while creating project.

- 1 **Beginner**–Exhibit should display how design process was used to bring idea and invention to life. Examples include: reusing an item to do something different, adding circuitry to an existing item.
- 2 **Advanced**– Exhibit should be original design that solves problem. Youth states problem, shows design process and end prototype or invention.

Fact card MUST accompany all entries– found at the back of the book.

Department 6: Communicative and Expressive Arts

SECTION A PRINTS

(Excellent - 10; Good - 6; Creditable – Ribbon)

Photos must have been taken in the current project year. Exhibits will be evaluated on technical quality, composition, storytelling ability, preparation of exhibit and members working knowledge of the photography project. Exhibits must be titled or captioned to assist the viewer to interpret the message. Preparation of photo for exhibit should demonstrate good workmanship and use of materials. Exhibit should be mounted on a sturdy background like mat board or foam core, not in a commercial picture frame (entries will not be accepted under glass or wrapped in plastic) and should be fitted with a device for hanging

Class No.

- 1 **Single Photo** - Black and white
- 2 **Single Photo** - Color
- 3 **Photo Story** – Narrative or informational presentation using images as illustrations to communicate story or document a process. Consists of 4 to 8 photographs of similar size with identifying or informational captions to tell a story or document a process. Exhibit may include a short narrative telling the story that the images are illustrating. Some photo stories require a supporting narrative, conversely, most narrative work is better supported by a group of images. Exhibit will be judged on informational/narrative quality of photographs, relevance to and integration with the story, technical quality of the photographs and quality of the overall presentation.
- 4 **Photo Study Class** - To consist of one of the following:
 - At least 4 photos demonstrating four methods of isolating the subject; not more than three objects permitted in each photo.
 - At least 4 close-up photos with a different main light source in each - front, side, back and diffuse.
 - At least 4 photos - each to illustrate one idea, i.e., hidden lines and shapes, framing, patterns, perspective or texture. Show differences - same topic, different location, angles, etc.

SECTION B DIGITAL IMAGES

(Excellent - 10; Good - 6; Creditable – Ribbon)

- 1 **Single Unedited Digital Image** - Picture comes straight from the camera, no modification. **(Limit of 5 entries in this class)**
- 2 **Single Slightly Edited Digital Image** - Image is somewhat digitally edited or enhanced. Modifications may include: cropping; sharpening or blurring; brightness or contrast changes; or the addition of text. Thumbnail of the original image shall accompany exhibit. **(Limit of 5 entries in this class).**
- 3 **Single Heavily Edited Digital Image** - Image has been radically digitally edited or enhanced. Modifications may include: addition to or the removal of parts of the image; changes in the color scheme of the image; the use of filters or effects; or animation using digital images, etc. Thumbnail of the original image shall accompany exhibit. **(Limit of 5 entries in this class)**
- 4 **Story composed of 4-8 Digital Images of similar size** - If edited images are used, thumbnails of the originals shall accompany exhibit.
- 5 **Computer Generated Design or Image** - design or image using technology or software: to include scanned images or items; graphics or logos.
 - If using graphics from the internet, source and permission for use from owner must be noted.
 - If the 4-H Clover is used the design must use the official 4-H clover:
<https://nifa.usda.gov/resource/4-h-name-and-emblem-resources>

SECTION C VIDEO PROJECT

(Excellent- 14; Good - 10; Creditable - Ribbon.)

Class No.

- 1 **Video Project** - Must show 4-H project in sequence of completion. Running time: At least 10 minutes but not more than 20 minutes. Entries must be submitted to the 4-H Office at least one week prior to the fair. Videos will be on display during the fair. Judging criteria include technical quality, organization and communication of message, and creativity.

SECTION D FINE ARTS

(Excellent 10; Good – 6; Creditable – Ribbon)

- This section is limited to items designed by the 4-H member.
- **NO KITS ARE PERMITTED.**
- Items must have been made as part of a 4-H project during the present project year. Articles made in school programs or in other non- 4-H activities should not be entered in the 4-H Department exhibit. (Members are encouraged to enter these exhibits in the Open Class.)
- Art objects must be in good condition and ready for display.
- Small, delicate, fragile items should be displayed in a display box.
- Objects whose ultimate use is to hang on the wall must have mountings on them and be ready for hanging.

Class No.

- 1 Drawing** – Expressive work in pencil, charcoal pencil, felt tip pen, stick charcoal, crayon, colored chalk or pastel, brush and ink. Work is to be signed, matted, and framed.
- 2 Painting** – Expressive work in oil, watercolor, acrylics or mixed media, i.e. watercolor and ink, acrylic and chalk, acrylic and collage, etc. Work is to be signed, matted, and framed.
- 3 Graphics/Prints** – Any printing process that duplicates one or more identical images. Work is to be signed, matted, and framed.
- 4 Sculpture** – Materials may be wood, stone, clay, original cast plaster, Paper Mache, metal (sheet or wire), fibers, fabric, or fiber glass, or a combination of these. Process may be carved, modeled, fired, soldered, glued, molded, laminated, nailed, or sewn.
- 5 Ceramics, Pottery** – objects of clay, fired and/or glazed, hand built, wheel thrown, cast from original mold. No pre-forms permitted.
- 6 Hobby Ceramics** – Any form cast from a commercial mold or pre-form. Cleaned and painted/stained/glazed. Proper sealant if not glazed.
- 7 Fiber, Fabric** – Objects create from commercial patterns of 2 or 3 dimensions of fibers and/or fabrics used singly or in combination, employing any of the following techniques: weaving; knotting; needle arts; string art; felting, etc.
- 8 Glasswork** – Can be from a commercial source. Etched, sandblasted, blown or pulled, annealing/tempering/slumped/ fired. Stained glass can be painted or liquid lead.
- 9 Jewelry/Precious Metals— *First Year in Jewelry Class Only***— Jewelry made with purchased materials simply strung. Will evaluate on bead and color selection and pattern used to string beads.
- 10 Metal** – Objects of metal(s) used singly or in combination with other materials such as other metals, plastics, wood, ground stones, bone, enamel. Objects can be made by the following processes: hand cut, etched, engraved, tooled, or molded. No entries with tin cans permitted.
- 11 Mosaics** – 2 or 3 dimensional objects using clay tile, glass, stone. Projects should be grouted and sealed. Stepping stones can be entered.
- 12 Leather**— Using commercial patterns and kits. Objects can be tooled, carved, molded, stamped, laced, stitched and/or riveted. Sealant should be applied.
- 13 Wood and/or Paper** – Processes from commercial patterns and kits: carving, wood burning, gluing, inlay, cutting, tearing, layering, (origami) folding, quilling, basket making.
- 14 Creative Framing**—Entry will include both photo and frame; and item will be evaluated together. Photo will not be entered in another class. Exhibits simply placed in a commercial frame are ineligible. Exhibitors should use their imagination such that Creative Framing serves to create a visual image that is more powerful than the sum of all its parts.

Department 7: Record Books

SECTION A RECORD BOOKS

Excellent- 16; Good - 8; Creditable - Ribbon

Class No.

- Record Book** - On pages no smaller than 8 ½ x 11”, record books should include project records, news clippings and other documentation of the member’s 4-H experience. The CURRENT YEAR’S WORK should appear FIRST followed by previous years, i.e. 2023,2022, 2021, 2020, etc. Record books will be judged according to criteria printed below.

Record Book Judging Criteria

Logical and consistent arrangement	10
Neat and attractive appearance	25
Title page and/or current picture	5
Index/Table of Contents	5
Current Year Programs – in chronological order; including projects, certificates/record sheets. Related (educational) activities, e.g., demonstration certificates, clothing revue, winter fair, judging contests, etc.	25
Club Activities, e.g., community service, 4-H Week (pictures)	5
Award Trips and County Medals	5
News Clippings – club or personal – underline or highlight name	5
Fair entries/ribbons	5
End of Year Achievement Certificate	5
Summary Sheet(s) – all years	5
Excellent: 86-100 Good: 76-85 Creditable: 60-75	

Department 8: Community Service

SECTION A COMMUNITY SERVICE

Excellent - 16; Good - 12; Creditable – Ribbon)

Class No.

- Club Community Service Exhibit** - Photographic Documentation of community service project/s; must be mounted foam-core board ready for hanging or in a photo album. Pictures should represent the actual service done and those who benefited. Must include a typed or handwritten description explaining the project.
- Club Community Service Project** - An item constructed as a club project for community service; examples include footbridge, bird feeding station, Fair garden plot. Must include a typed or handwritten explanation of the project.
- Member Community Service Exhibit** - Photographic Documentation using the same criteria as Class 1.
- Member Community Service Project** - Constructed Item. Use the same criteria as Class 2.

Department 9: Cloverbud

SECTION A CLOVERBUD PROJECTS

ALL non-animal Cloverbud projects are to be entered in this Department.

- A Cloverbud Ribbon - no premium points will be awarded.
- More than one entry may be made, but each entry must be different.

Class No.

- Cloverbud** entries must have been made by members enrolled in the Cloverbud 4-H Program according to acceptable practices as outlined in the Cloverbud materials

Department 10: Heritage

ALL entries must include the following information:
Source of traditional design, method, material, or document (specific ethnic group or family) and historical background as appropriate.

Emphasis in Heritage projects is on personal growth and knowledge through learning about a cultural heritage based on research of traditional designs, methods, and materials, as well as learning basic skills.

SECTION A HERITAGE

Class No

- 1 Heritage Arts and Crafts** - a simply constructed, traditional object using materials, methods and/or decoration based on a continuation of ethnic art handed down from one generation to another. Objects should be constructed in traditional design methods and materials but if not state what the traditional design methods and materials would be and what you had to replace them with to complete the project. No soap entries of any kind will be accepted.
(Excellent - 12; Good - 8; Creditable - Ribbon)
- 2 Advanced Heritage Arts and Crafts** – Traditional objects using materials, methods and/or decoration based on continuation of an ethnic art handed down from one generation to another. A complex project requiring more than 20 hours to complete.
(Excellent - 20; Good - 16; Creditable – Ribbon)
- 3 Processed Natural Fibers** – Natural fibers processed for use.
(Excellent- 16; Good- 12; Creditable – Ribbon)
- 4 Heritage Documentation** – A documentation of family or community history, buildings, methods of processing and/or use. Cite references.
(Excellent – 12; Good – 8; Creditable – Ribbon)
- 5 Historical Records** – either as club or member entry. Includes but not limited to intergenerational interviews.
(Excellent – 12; Good – 8; Creditable – Ribbon)

Fact card MUST accompany all entries, and can be found at the back of this book, starting with page a.

Department 11: Plant Science

A member may enter more than one flower and vegetable exhibit in each class as long as they are different varieties.

A horticulture fact card filled out by the member must accompany each entry.

Fact cards (back of this book, beginning with page a, and available at the CCE Office) must include the following information:

- Crop
- Variety
- Starting information (sowing techniques, i.e., direct ground or started indoors, purchased seedling, etc.)
- General management tips
- Would you recommend this variety?

SECTION A FLOWERS

Excellent- 10; Good- 6; Creditable - Ribbon

Exhibit:

- stems, 3 flowers shall comprise an exhibit, except with multi-blossom kinds (i.e., impatiens, phlox and clump flowers); these 3 stems without any blossoms removed.
- Submit in containers tall enough to hold stem length and support the flower.
- Blossom colors may vary.
- Flower stems should be eight inches long, except where type of flowers makes this impossible, i.e., gladiolus, dwarf flowers, etc.
- Roses: Entry to be one stem hybrid tea, floribunda, or climber.
- Gladiolus: Entry to be one spike per class - at least 2 flowers open and 2 leaves left on.
- Sunflower: Single stem.

Flowers will be evaluated on the basis of uniformity, which takes into consideration: age, color, shape and size.

Major categories of judging flower entries will be blossom quality, correctness of stem length, disease indicators, insects, handling, cleanliness and stage of development.

Class No.

1 Cut flowers

- Asters
- Bachelor Buttons
- Calendulas
- Cosmos
- Dahlias (3 blooms)
- Gladiolus
- Marigolds
- Petunia
- Phlox (annual)
- Rose
- Ornamental Kale (1 head)
- Snapdragon
- Sunflowers (ornamental purposes)
- Sweet Peas
- Zinnias
- Lilies - 1 stem
- Coleus or other foliage type plant
- Any cut flower not listed, annual or perennial

2 Collection of 8 garden cut flower specimens, each named by variety

SECTION B

INDOOR GARDENING

Only one entry per class.

All exhibits must be of 80% natural materials (excluding base), except corsages, which may exceed 20% artificial materials.

Excellent-10; Good-6; Creditable- Ribbon

Exhibitors must furnish their own containers for arrangements. Name of all plants is to be included on entry tags for Hanging Plants and Potted House Plants. Containers should be labeled on the bottom for quick identification.

Arrangements will be judged as follows:

Quality of flower	30%
Choice of container	10%
Arrangement	60%

Houseplants should be in proper size containers, well established and not recently transplanted. Should be grown by exhibitor for at least 6 months (except Terrariums and Dish Gardens).

Class No.

- 1 Decorative arrangement other than flowers** such as gourds, fruits, cones, nuts or vegetables, prepared by exhibitor.
- 2 Hanging Plant** - foliage
- 3 Hanging Plant** - flowering
- 4 Potted House Plant** - Flowering type, should have flowers.

- 5 Potted House Plant** - Foliage type
- 6 Potted House Plant** - Vine type
- 7 House Plant** that has been propagated, started from cutting or air layering, during the past year.
- 8 Terrariums** - not over 15 inches long - with or without moss lining. (Woodland or tropical plants - not mixed.)
- 9 Displays of Dried Seeds**, pressed flowers or other natural materials. (Food stuffs such as rice or macaroni should not be used in plaques, jars, etc.)
- 10 Collection of Cacti**; 3 or more in one container
- 11 Dish Garden**; 3 or more different plants in one container. All to be woodland, tropical, or succulent plants - not a combination.
- 12 Corsage & Nosegays of perishable materials** in transparent bag.
- 13 Corsage of non-perishable materials** in transparent bag.
- 14 Centerpiece arrangement of all fresh materials** (all around display). Holiday and Winter theme not allowed.
- 15 Centerpiece arrangement of all Dried materials** (instead of all fresh materials).
- 16 One-sided arrangement of all fresh or dried materials.** Holiday and Winter theme not allowed.
- 17 Miniature Landscape Garden** - Landscape scene on rock base - approximately 2 -1" thick; 4-5" wide; 5-6" long.
- 18 Holiday Decorations** - Items made of natural materials, which include skills learned in Holiday Decoration Indoor Gardening project. Exhibits include door swag, natural ornaments (3 natural ornaments = 1 entry), candle centerpieces, rope garlands, wreaths, corsage, centerpieces, corn husk dolls. Members may have two entries in this class.
- 19 Educational collection of dried material.**
- 20 Potpourri/Sachet** – Entered in form for use (i.e. material for sachet, bowl for potpourri etc.) along with a sample in a clear closed container and list of ingredients. Minimum of five different ingredients. Members should be able to identify the contents of the potpourri. Members may exhibit two entries.
- 21 Bouquet** – must be a minimum of 8 inches in height or length with a minimum of 3 plant specimens incorporated into its construction and ready for display.

SECTION C

VEGETABLE - FIELD CROPS - FRUIT

Excellent- 10; Good- 6; Creditable - Ribbon

Exhibits must be grown as a project by the exhibitor. Each entry must be labeled with the correct name, otherwise entries will be disqualified. Multiple entries will be allowed in a category; however, each entry must be a different variety. **A horticulture fact card MUST accompany all entries— found at the back of the book, beginning with page a.**

JUDGING STANDARDS

Excellent - Practically perfect, clean, free from injury; uniform in size, shape and color; of the best market size and true to variety type.

Good - Clean, free from damage, fairly uniform and of fair market size; and fairly true to variety type.

Creditable - Fairly clean, free from serious damage, fairly uniform and of fair market size.

Unworthy (no award) all others including exhibits which are dirty, seriously damaged by disease, insects, mechanical or other, lacking uniformity of size to such an extent that the largest specimen on a plate is twice as big as the smallest.

For specifics on displaying refer to "Preparing Vegetables for Exhibit" available at the 4-H office.

- Eggplants, Beans, peas and vine crops should be exhibited with a very short tip of stem on.
- Green tomatoes must have their stems on.
- Red tomatoes have the option of leaving stem on or taking it off.
- Root and bulb crops should have tops cut to about 1 or 2 inches for display.
- Peppers should have stem cut even with top lobes of pepper.

Class No.

500 Vegetables and Fruits

Beans, green snap, 10 pods of round-podded of varieties such as: Tender Green.

Beans, green snap, 10 pods of flat-podded varieties such as: Bountiful.

Beans, yellow snap, wax, 10 pods of round-podded varieties.

Lima Beans, 6 pods, any variety.

Beets, 3 specimens any variety, tops off to 1 inch, any variety.

Broccoli, 1 head, or bunch of small head 6" in diameter.

Cabbage, 1 head, Golden Acre and Copenhagen type, mid-season.

Cabbage, 1 head, Danish type, red.

Cabbage, 1 head, Savoy type, any other green cabbage.

Cabbage, 1 head, any other variety.

Carrots, 3 tops off to 1 inch, any short type.

Carrots, 3 tops off to 1 inch, any intermediate type, as Chantenay and Danvers

Carrots, 3 tops off to 1 inch, any long type, as Nantes.

Cauliflower, 1 head, any variety, leaves cut just above head.

Celery, 1 plant, any variety.

Chard, 1 plant.

Chinese Cabbage, 1 head.

Cucumbers, 5 small pickles under 3" long, any pickling variety.

Cucumbers, 5 for dill pickles, any pickling variety, 3-6 inches.

Cucumber, 3 slicing condition, any variety.

Eggplant, 1, any variety.

Endive, 1, plant, clean, roots off.

Kohlrabi, 3, stump removed, leaves trimmed.

Lettuce, 1 head any variety, roots off.

Lettuce, leaf & bib type, 1 plant, any variety, roots off.

Muskmelon, 1 mature, any variety.

Onions, 3 mature, any Yellow Globe type.

Onions, 3 mature, Ebenezer type

Onions, 3 mature, Sweet Spanish type.

Onions, 3 mature, any other type.

Shallots, 1 plant, 3 uniform bulbs.

Garlic

Parsley, 1 plant, roots off, washed and yellow leaves removed.

Parsnips, 3

Peppers, sweet, 2 specimens, uniform, any variety.

Peppers, hot, 2 specimens, uniform, any variety.

Any specialty pepper not deemed as "sweet" or "hot", any variety

Pumpkins, 1 specimen, any field variety. (e.g., Connecticut or Big Mac type)

Pumpkins, 1 specimen, any pie variety.

Miniature Pumpkin

Radishes, five any variety.

Rhubarb, five stalks, any variety.

Rutabagas, three, any variety, tops off.

Salsify or Vegetable Oyster, five, any variety.

Spinach, New England, 2 lb. bunch of tips, not over 6 inches.

Squash, Summer, 1 specimen, shell not hardened (e.g., Yellow Crookneck and Yellow Straightneck)

Squash Summer, 1 specimen, shell not hardened, zucchini type.

Summer Squash, of another variety not listed

Squash, Winter, 1 specimen, Table Queen type, acorn and butternut.

Squash, Winter, 1 specimen, varieties as Green, Yellow and Blue Hubbard.

Squash, Winter, 1 specimen, any other variety.

Sweet Corn, 3 ears, husks removed one side only, any variety.

Tomatoes, green, 3, any variety, except Cherry type.

Tomatoes, ripe, 3, any variety, except Plum variety.

Tomatoes, ripe, 3, any Plum variety.

Pear Tomatoes, 3 ripe.

Cherry Tomatoes, 8, any variety, ripe.

Turnips, 3 specimens, tops off, clean, uniform.

Watermelon, 1 mature, any variety.

Specimen, any vegetable not listed

Sunflower, seed heads, grown for seed harvest

Herb, one bunch dried or prepared to be dried.

Oddities - Any odd, unique or unusual home-grown plant material that has occurred naturally or has been manipulated. Ex.: vegetable showing human facial characteristics, unusually colored fruit or vegetable, vegetables growing in a bottle.

Potatoes, any variety

Strawberries (6 berries on plate)

Any other fruit grown as a project.

SECTION D

SPECIALTY PLANT PROJECTS

Class No.

1 Plant and Garden Display

Excellent -10; Good - 6; Creditable - Ribbon

- **Plant Sculpture** – creation made from vegetable drying, carving, container formation, planting, etc.
- **Garden Market Project** – to include Record Book and pictures of project work.
- **Landscape Model** – actual model and/or to-scale blueprint drawings. Landscape display may be entered individually or as a club entry. Plan must be submitted by August 13th and space will be assigned prior to opening of the fair.
- **Vegetable Display** – a small display using vegetables as a base. This may be an artistic or commercial display. Minimum display size will be 2 x 2 x 2 feet.
- **Scarecrow** – one scarecrow per member. Scarecrow must be made and ready for display in garden. Creativity is the emphasis, keep in mind what a scarecrow is used for. You will be judged on creativity and durability (weatherproof, structurally sound, longevity of materials used, etc.). This entry can also be a club project and entered as a club.
- **Basic Container Garden** – Any selection of one to three different plant varieties in a container ready for display. Emphasis on this class will be creativity in the container selected, the types of plant materials (flowers, herbs, vegetables etc.) used and knowledge of care, identification and condition of plant materials.
- **Garden Ornament** – Any garden accessory used to increase efficiency or esthetic qualities to the garden, examples would be a trellis or garden hose keeper. Some entries may be better suited to enter into a woodworking or creative arts class, etc.
- **Topiary** - A display of topiary technique. Entries will be evaluated on appropriateness of topiary style with container and plant material. Additionally, consideration in the quality and condition of the plant material.
(10 - 6 - Ribbon)

- 2 Expanded Container Garden** – Same as class number 6 (above), must have a minimum of four different plant varieties.
(Excellent – 14; Good – 10; Creditable – Ribbon)
- 3 Market Display** - Open to all plant project members who have completed 3 years of plant projects. To make a market display of products produced in current growing season. Able to construct in Club Display size 4 x 4 x 4 or to stand alone. Must bring own materials necessary to border display. Size of display not to exceed 4 x 4 x 4 feet. Pre-registration to the 4-H office mandatory by August 10th.
(Excellent – 16; Good – 10; Creditable – Ribbon)
- 4 Horticultural Methods** – display of different techniques used in growing plants such as forcing bulbs, hydroponics, grafting, Junior Master Gardener projects and any other applicable method. Members have the choice of bringing actual display of the technique or documenting in a series of photographs mounted with proper explanations on durable display material. Must include in your display an introduction, growing method and what you learned
(Excellent – 16; Good – 10; Creditable – Ribbon).
- 5 Club Container Garden** - Garden appropriate to assist in fair beautification, garden technique demonstration, plant identification, etc.
(16 -10 - ribbon)

Maker/Tinker Entry

Name _____ Section _____ Class # _____

Project Name (Description) _____

Materials Used _____

Description of the Project _____

What skills were developed by creating the project? _____



Recycled Project Entry

Name _____ Section _____ Class # _____

Project Name (Description) _____

Materials Used _____

How was trash effectively reduced through the reuse of these materials? _____

How will the new item be used? _____

Heritage Project Entry

Name _____ Section _____ Class # _____

Project Name (Description) _____

What traditional materials, methods, design, or documents were used to make this project? _____

Source of traditional design, methods, or documents: _____

What did you discover about a cultural heritage through this project? _____



Flower and Vegetable Information Entry

Name _____ Section _____ Class # _____

Crop Name _____ Variety _____

Starter information (from seed, transplanted, etc.) _____

General growing conditions: _____

Would you recommend this crop to others? Yes No Maybe Why? _____



NAME _____

CLUB _____

AGE _____ YRS IN CLUB WORK _____

YEARS IN PROJECT _____

PROJECT _____

SECTION _____ CLASS _____



NAME _____

CLUB _____

AGE _____ YRS IN CLUB WORK _____

YEARS IN PROJECT _____

PROJECT _____

SECTION _____ CLASS _____



NAME _____

CLUB _____

AGE _____ YRS IN CLUB WORK _____

YEARS IN PROJECT _____

PROJECT _____

SECTION _____ CLASS _____



NAME _____

CLUB _____

AGE _____ YRS IN CLUB WORK _____

YEARS IN PROJECT _____

PROJECT _____

SECTION _____ CLASS _____



NAME _____

CLUB _____

AGE _____ YRS IN CLUB WORK _____

YEARS IN PROJECT _____

PROJECT _____

SECTION _____ CLASS _____



NAME _____

CLUB _____

AGE _____ YRS IN CLUB WORK _____

YEARS IN PROJECT _____

PROJECT _____

SECTION _____ CLASS _____



NAME _____

CLUB _____

AGE _____ YRS IN CLUB WORK _____

YEARS IN PROJECT _____

PROJECT _____

SECTION _____ CLASS _____



NAME _____

CLUB _____

AGE _____ YRS IN CLUB WORK _____

YEARS IN PROJECT _____

PROJECT _____

SECTION _____ CLASS _____

4-H Youth Department Entry Blank: Schaghticoke Fair

Leader's Signature: _____

*Type onto and then print out this form, or carefully write with blue or black ink: Illegible entry forms will not be honored.
Refer to the 4-H Department Premium List for Rules and Regulations*

Name _____ Age (as of Jan 1st of the current year) _____

Address _____ City _____ Zip _____

Name of 4-H Club _____ Telephone (_____) _____ - _____

Department	Section	Class #	Class Name/Entry	Years in Project	Livestock Registration Name/Number/Tattoos <i>Leader Signature Mandatory for all animal entries</i>	Breed/Variety	Award

Attention Animal Exhibitors

OVERNIGHT PERMISSION MUST BE DELIVERED, MAILED, OR FAXED (518-272-1648)

CCE 99 Troy Road, Suite 203, East Greenbush, NY 12061

FOR LEGAL REASONS: Verbal responses cannot be accepted

Overnight Permission

Member's Name/s _____

Has my permission to stay overnight at the Schaghticoke Fairgrounds on the night(s) I have indicated below.

Wednesday Thursday Friday Saturday Sunday

She/He will be staying in a camper with _____
(Name of Chaperone)

Signature of Designated Chaperone: _____

Chaperone Phone/cell: _____

Signature of Designated Parent/Guardian: _____

Date of Signature: _____

Print Parent/Guardian Name: _____

Parent/Guardian Phone/cell: _____

