

Breeding Record:

List the cattle born on your farm this year.

Animal ID #	Breed	Sex	Date of Birth	Dam ID #	Sire ID #	Notes

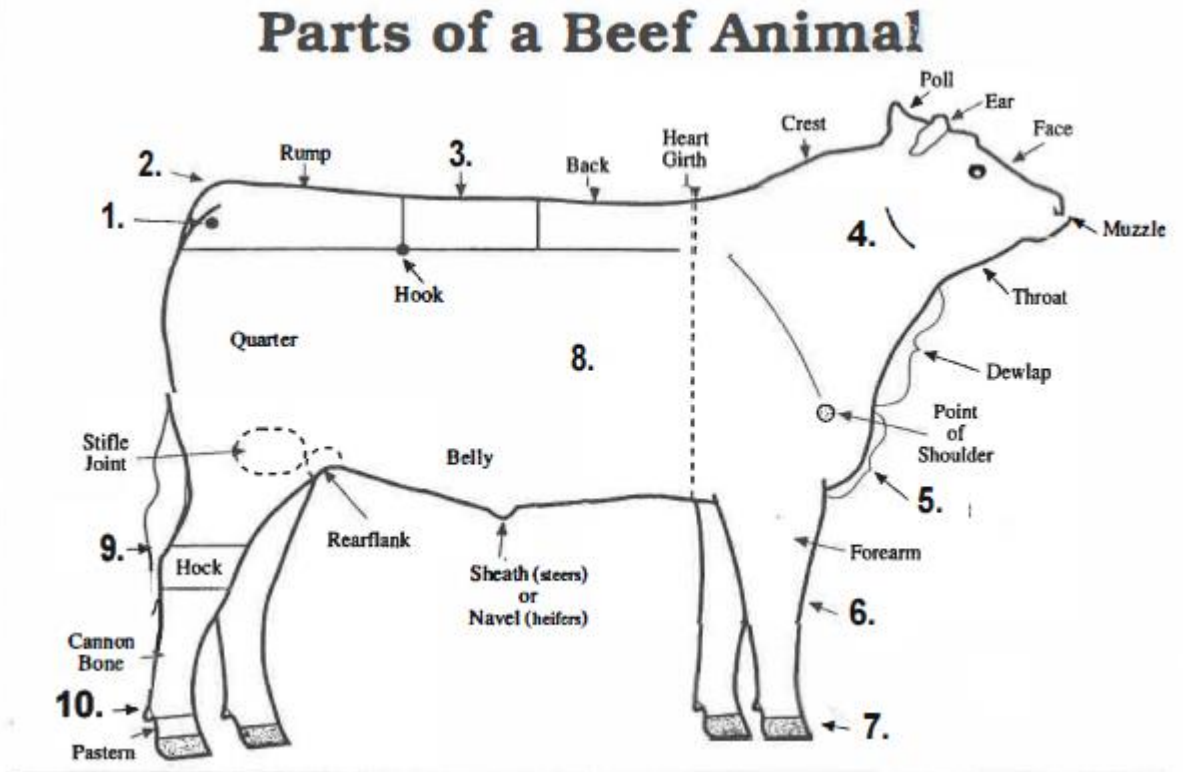
Income:

Record the income from sales of animals, premium money, etc...

Date	Item	Amount Received
Total Income		

Parts of a Beef Cow

Label the numbered parts in the diagram below.



1.
2.
3.
4.
5.
6.
7.
8.
9.
10.

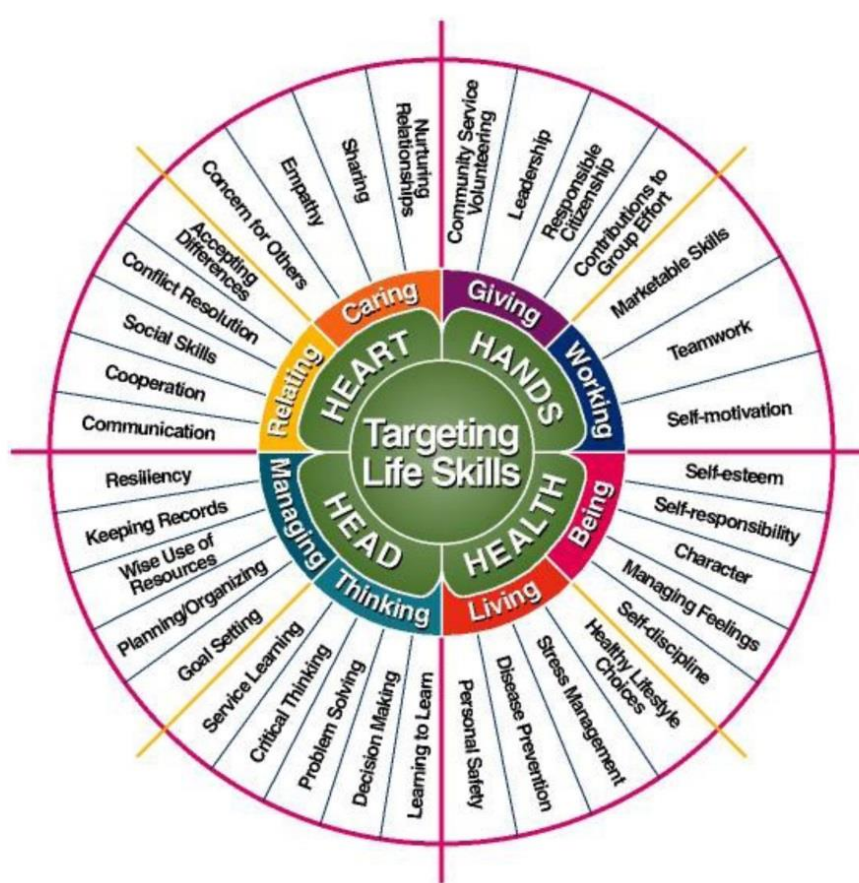
Activities & Awards:

List the 4-H Activities you participated in this year and any awards you received.

Public Presentations	
Steuben County Fair	
New York State Fair	
Regional Shows	
Farm Tours	
Other	

1. What skills did you learn or improve this year?

2. What was your favorite part of this project?



4-H Targeting Life Skills Wheel Questions

Each 4-H member must complete 1 skills wheel and attach to 1 record

8-10 year olds - write a short paragraph about 30 words or less using the Targeting Life Skills Wheel to select **1** life skill you learned from this 4-H project and explain how the project taught you this skill.

11-13 year olds – write two short paragraphs about 30 words or less for each paragraph using the Targeting Life Skills Wheel to select **2** life skills you learned from this 4-H project and explain how the project taught you this skill. The 2 life skills must be from a different category on the chart (Head, Heart, Hands Health) for example one from Head and 1 from Heart but Not 2 from Head or Not 2 from Heart.

14-18 year olds – write four short paragraphs about 30 words or less for each paragraph using the Targeting Life Skills Wheel to select **4** life skills you learned from this 4-H project and explain how the project taught you this skill. There must be 1 life skill from each of the 4 categories Head, Heart, Hands Health.

**PROJECT CHAMPION SELECTION CRITERIA
MARKET AND BREEDING BEEF, SHEEP, SWINE, MEAT GOATS & DAIRY STEERS
FOR CURRENT PROJECT YEAR**

To be eligible for Project Champion, please list your name, species, activities you participated in (where applicable) & submit with an approved signature. Please leave the "Points Earned" column blank

NAME _____

SPECIES _____

<u>CRITERIA</u>	<u>POSSIBLE POINTS</u>	<u>POINTS EARNED</u>
Record Completed & Turned In On Time	20	_____
Completed Targeting Life Skills Wheel	5	_____
Participated In County Fundraiser-Cuba Cheese/Wilson Beef Farm Snack Sticks	5	_____
Participated In A Community Service Project (List Projects on back)	5	_____
Completed Public Presentation at Club Level	5	_____
Completed Public Presentation at County Level	5	_____
Completed Public Presentation at District Level	5	_____
Completed Public Presentation at State Level	5	_____
Participated In or Assisted With Livestock Judging Practices or Contests	2	_____
Participation in Livestock Judging at the NYS Fair	2	_____
Selected for Livestock Judging at the National Level in the current year	5	_____
Participated in Livestock Judging at the National Level in the current year	5	_____
Participated in or Assisted with Livestock Skillathon Practices or Contests	2	_____
Participation in Livestock Skillathon at the NYS Fair	2	_____
Selected for Livestock Skillathon at the National Level in the current year	5	_____
Participated in Livestock Skillathon at the National Level in the current year	5	_____
Exhibited Project Animal at County Fair	10	_____
Exhibited more than one animal of that species at County Fair	3	_____
Exhibited Project Animal at State Fair	5	_____
Exhibited Animal of That Species at Another Show (Please list the event name, date & location on back)	1 pt. each event	_____
Participated in other Livestock Animal Project (Examples: Animal Crackers, Colby Classic, Virtual Learning Opportunities, Quiz Bowls, Clinics, etc.) (Please list the event name, date & location on back)	1 pt. each project	_____
Participated in the National Swine Picture Judging Contest	2	_____
Participated in the Hoard's Dairyman Picture Judging Contest	2	_____
Was a Teen Leader for that species at State Fair or a Junior Leader for that species at the Club Level or beyond (List leadership experience on back)	1	_____
TOTAL POINTS EARNED		_____

APPROVED SIGNATURE _____
(4-H CLUB MEMBERS-LEADER MUST SIGN) (4-H INDEPENDENT MEMBERS-PARENT MUST SIGN)