

## Wappinger, New York

### Dutchess County Agriculture

Dutchess County agriculture comprises over 170,000 of the county's 512,000 total acres (30%). Our farms produce a total of \$44.8 million in goods and are a large part of the county's \$438 million. Agriculture is one of the county's largest industries; its diversity and impact on the local economy is substantial.

parcels. Farm property includes all the property tax parcels owned and/or operated on by a farm operation. Actual cropped or pasture area may be less than the area of the entire farm property.

Figure 2 (reverse) illustrates the relative acreage distribution of farm enterprises in the town of Wappinger. The largest segment (by acreage) is *Production Agriculture*, with farm operations on 748 acres of property. *Horse farms* constitute another particularly large agricultural segment in Wappinger, totaling 335 acres.

Table 1. Farms and Acreage in Wappinger

Number of Farm Parcels	63
Average Size of Ag Parcel	27 acres
Land in Farms	1,683 acres
Total Land in Wappinger	18,265 acres
Percentage of Town in Agricultural Use	9%



Meadowbrook Farm. Photo credit Sean Carroll

### Agriculture in Wappinger

Located along the Route 9 commercial corridor, the Town of Wappinger is a major retail center with primarily suburban style residential development. Consistent with other areas experiencing population increase, its Agricultural District acreage has decreased considerably, and it will continue to be difficult to maintain a productive agricultural base as the area becomes more densely developed. Agricultural District certification may be an important factor that encourages the Town to conserve its remaining farmland.

### A Closer Look

Communities in Dutchess County contain a diverse range of farm enterprises, from dairy, livestock and field crops to horses, orchards, and vineyards. Many of the farms produce a variety of goods as well. For example, some dairy farms also produce hay or grains. However, if the majority of the farm's income is generated from dairy, dairy is considered the enterprise. Farm enterprise types were developed from documentation provided by the New York State Department of Agriculture and Markets; they were then aggregated into larger categories for simplification.

It is important first to note that this data is based on farm parcel data collected, and therefore does not necessarily reflect the number of actual farms. For example, one farm could have one or several

Town of Wappinger

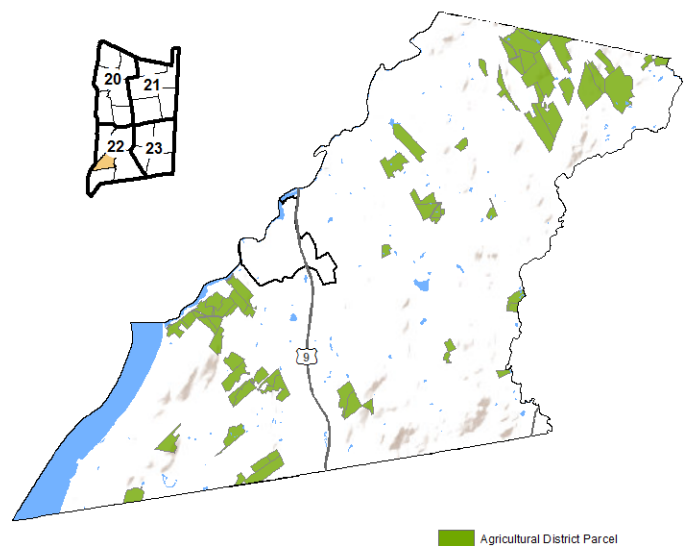


Figure 1. Map of Town of Wappinger in Agricultural District 22

Most farms in Dutchess County are small farms, grossing less than \$10,000 in annual sales. These farms typically make fewer capital investments. The Town of Wappinger is not an exception. There are more farms with annual capital investments in the 'Below \$10,000' category than there are in any of the other 5 categories. (see Figure 3).

The high number of farms in Wappinger with less than \$10,000 in annual sales and capital investment may be somewhat skewed by agricultural “buffer” properties, which are typically not in agricultural production and don’t generate sales nor require capital investment.

In terms of the economic benefits for Dutchess County and the region as a whole, small farms generate significant dollars that are then spent on investments (equipment, vet fees, etc.) that fuel the local economy. Larger farm operations, although fewer in number, generate higher gross sales and capital investment. A significant number of Wappinger’s farm parcels (16) had capital investments between \$10,000 and \$100,000, while 12 invested \$100,000 or more (Figure 3). These figures are important to consider when looking at the impact of agriculture in the county, as a large portion of these capital investments go back into the local economy.

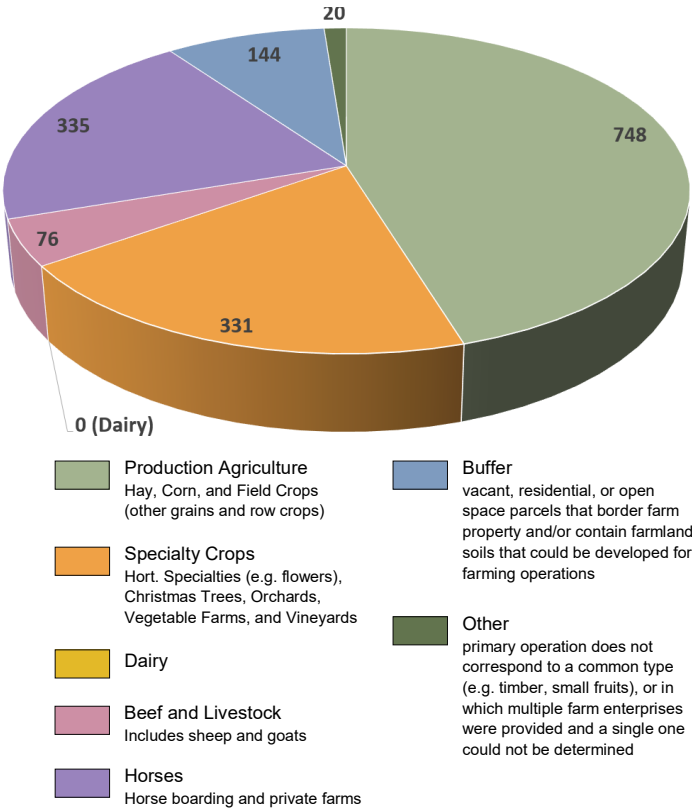


Figure 2. Acreage Distribution and Number of Farms by Enterprise Category

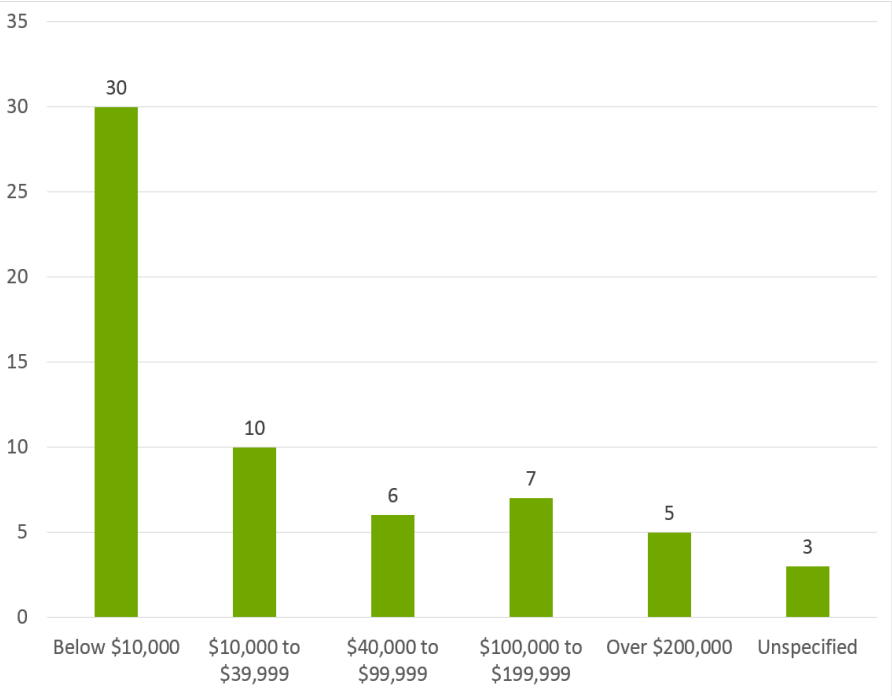


Figure 3. Number of Farms by reported Capital Investment



Obercreek Farm. Photo: Sean Carroll

Sources:

Agricultural District Recertification Process 2015 for 2016 Recertification. Cornell Cooperative Extension Dutchess County. April 2016. Updated 2022.

Census and Demographics. Dutchess County Department of Planning and Development. Retrieved from <http://co.dutchess.ny.us/countygov/departments/planning/plcensus.htm>, June 2015.

CCEDC provides equal program and employment opportunities. The programs provided by this agency are partially funded by monies received from the County of Dutchess.