

Pawling, New York

Dutchess County Agriculture

Dutchess County agriculture comprises over 170,000 of the county's 512,000 total acres (30%). Our farms produce a total of \$44.8 million in goods and are a large part of the county's \$438 million. Agriculture is one of the county's largest industries; its diversity and impact on the local economy is substantial.



Akindale Thoroughbred Rescue. Photo credit Sean Carroll

Agriculture in Pawling

Prior to 2008, the Town of Pawling lost nearly 28% of its state certified Agricultural District acreage at the same time that its population increased by more than 11%, well above the County average of 6%. The community is located on a major transportation corridor that includes Metro North's Harlem Valley Line, and is a highly attractive area for metro area commuters. From 2008 to 2022, however, Pawling's Agricultural District acreage increased by 15%.

The Town of Pawling revised its master plan in 1990. The new plan includes the following land uses planned in areas with Agricultural District acreage: conservation density (1 unit per 5 acres); low medium density (1 unit per 2 acres); industrial and highway business; rural density (1 unit per 4 acres); low density (1 unit per 3 acres), semi-public, recreation, and medium density.

The majority of active farmlands are located in the Conservation Density District and the Agriculture-Conservation Density District, as enumerated by the 1996 Town Code.

The Village of Pawling adopted its master plan in 1994. The only area left in the Village of Pawling that is categorized as farmland is the Heinchon Dairy property. However the future plan for the Village of Pawling includes two small areas intended for agricultural use.

A Closer Look

Communities in Dutchess County contain a diverse range of farm enterprises, from dairy, livestock and field crops to horses, orchards, and vineyards. Many of the farms produce a variety of goods as well. For

example, some dairy farms also produce hay or grains. However, if the majority of the farm's income is generated from dairy, dairy is considered the enterprise. Farm enterprise types were developed from documentation provided by the New York State Department of Agriculture and Markets; they were then aggregated into larger categories for simplification. It is important first to note that this data is based on farm *parcel* data collected, and therefore does not necessarily reflect the number of actual farms. For example, one farm could have one *or* several parcels.

Table 1. Farms and Acreage in Pawling

| | |
|-----------------------------|--------------|
| Number of Farm Parcels | 166 |
| Average Size of Ag Parcel | 58 acres |
| Land in Farms | 9,517 acres |
| Total Land in Pawling | 21,180 acres |
| Percentage of Town in Farms | 45% |

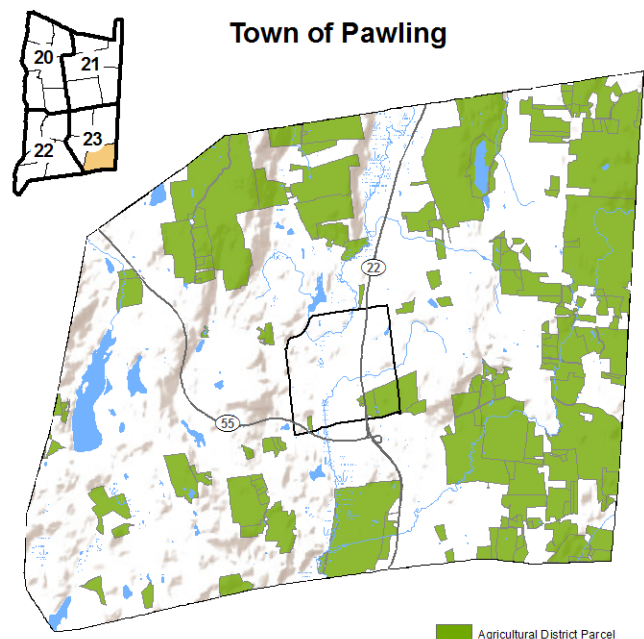


Figure 1. Map of Town and Village of Pawling in Agricultural District 23

Figure 2 illustrates the relative acreage distribution of farm enterprises in the town and village of Pawling. The largest segment (by acreage) is *Beef and Livestock*, with farm operations on 2,632 acres of property. Farm property includes all the property tax parcels owned and/or operated on by a farm operation. Actual cropped or pasture area may be less than the area of the entire farm property. "Other," *Production Agriculture*, and *Horses* are three other particularly large agricultural segments in Pawling, consisting of 2,372 acres, 1,773 acres, and 1,643 acres, respectively.

Most farms in Dutchess County are small farms, grossing less than \$10,000 in annual sales. These farms also typically make fewer capital investments. Pawling is not an exception. There are more farms with annual capital investments in the 'Below \$10,000' category than there are in other 5 categories combined (see Figure 3).

In terms of the economic benefits for Dutchess County and the region as a whole, small farms generate significant dollars that are then spent on investments (equipment, vet fees, etc.) that fuel the local economy. Larger farm operations, although fewer in number, generate higher gross sales and capital investment. A significant number of Pawling's farm parcels (25) had capital investments between \$10,000 and \$100,000, while 51 invested \$100,000 or more (Figure 3). These figures are important to consider when looking at the impact of agriculture in the county, as a large portion of these capital investments go back into the local economy.

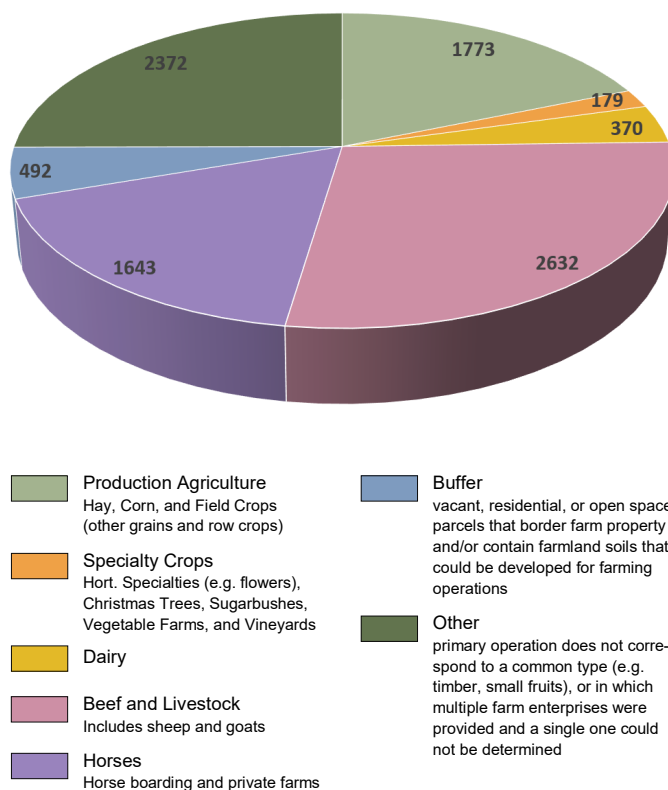


Figure 2. Acreage Distribution by Enterprise Category

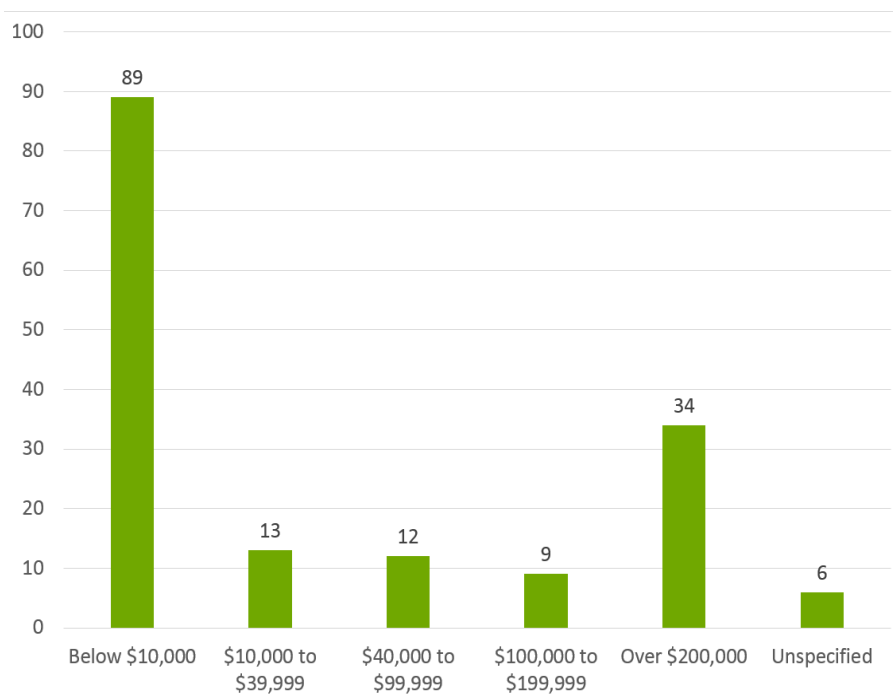


Figure 3. Number of Farm Parcels by reported Capital Investment



Cloverbrook Farm,. Photo credit Sean Carroll

Sources:

Agricultural District Recertification Process 2015 for 2016 Recertification. Cornell Cooperative Extension Dutchess County. April 2016. Updated 2022.

Census and Demographics. Dutchess County Department of Planning and Development. Retrieved from <http://co.dutchess.ny.us/countygov/departments/planning/plcensus.htm>, June 2015.

CCEDC provides equal program and employment opportunities. The programs provided by this agency are partially funded by monies received from the County of Dutchess.