

Hyde Park, New York

Dutchess County Agriculture

Dutchess County agriculture comprises over 170,000 of the county's 512,000 total acres (30%). Our farms produce a total of \$44.8 million in goods and are a large part of the county's \$438 million. Agriculture is one of the county's largest industries; its diversity and impact on the local economy is substantial.

is generated from dairy, dairy is considered the enterprise. Farm enterprise types were developed from documentation provided by the New York State Department of Agriculture and Markets; they were then aggregated into larger categories for simplification.

Table 1. Farms and Acreage in Hyde Park

Number of Farm Parcels	61
Average Size of Ag Parcel	53 acres
Land in Farms	3,197 acres
Total Land in Hyde Park	25,467 acres
Percentage of Town in Agricultural Use	13%



Sinon Farm. Photo credit Sean Carroll

Agriculture in Hyde Park

The Town of Hyde Park, although highly developed, encourages agricultural protection in the town plan adopted in 1997. Although there is only a small portion of agricultural land remaining in Hyde Park, there are larger portions of open space land (steep slopes, shallow depth to bedrock and wetlands) in the municipality. Of the 25,467 acres of land in Hyde Park, 3,063 acres are agricultural, clustered primarily in the eastern half of the town. This number is up about 2% since 2008, showing a small but significant reversal in the typical trend of decreasing farmland in the town.

The Town of Hyde Park Master Plan includes a Commercial Ventures section that lists, as Project 3, an Agricultural Products Program. The goal of this program is to encourage people to buy from farmers' markets and set up areas where farmers markets can collectively sell locally grown products to the community. This encourages understanding and support of agriculture which is critical to maintaining awareness of the importance in agriculture as the town has seen a decrease in land requesting be included in the Agricultural District.

A Closer Look

Communities in Dutchess County contain a diverse range of farm enterprises, from dairy, livestock and field crops to horses, orchards, and vineyards. Many of the farms produce a variety of goods as well. For example, some dairy farms also produce hay or grains. However, if the majority of the farm's income

Town of Hyde Park

■ Agricultural District Parcel

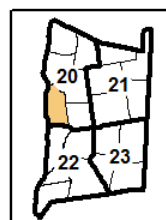
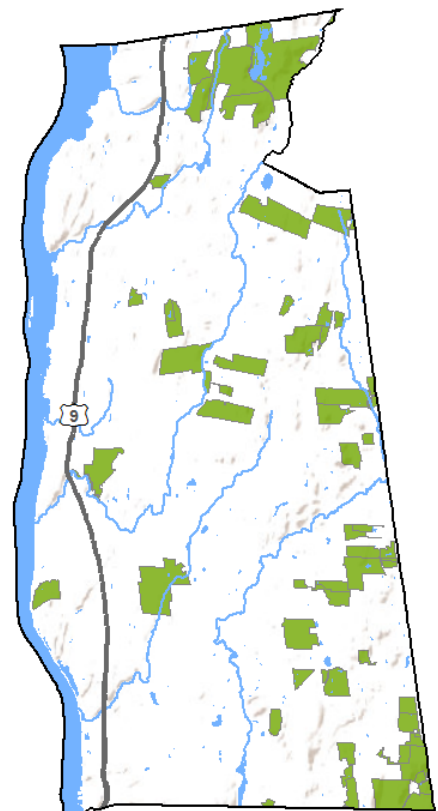


Figure 1. Map of Town of Hyde Park in Agricultural District 20

It is important first to note that this data is based on farm parcel data collected, and therefore does not necessarily reflect the number of actual farms. For example, one farm could have one or several parcels. Farm property includes all the property tax parcels owned and/or operated on by a farm operation. Actual cropped or pasture area may be less than the area of the entire farm property.

Figure 2 illustrates the relative acreage distribution of farm enterprises in the town of Hyde Park. The largest segment (by acreage) is *Beef and Livestock*, with farm operations on 1,100 acres of property. *Specialty Crops* is another particularly large agricultural segment in Hyde Park, consisting of 589 acres.

Most farms in Dutchess County are small farms, grossing less than \$10,000 in annual sales. These farms typically make fewer capital investments. Hyde Park is not an exception. The large majority of farms fit into the categories of ‘Below \$10,000’ or ‘\$10,000 to \$39,999’ in terms of annual capital investments (see Figure 3).

The high number of farms in Hyde Park with less than \$10,000 in annual capital investment may be somewhat skewed by agricultural “buffer” properties, which are typically not in agricultural production and don’t generate sales nor require capital investment. In the case of Hyde Park, this makes up 375 acres of land.

In terms of the economic benefits for Dutchess County and the region as a whole, small farms generate significant dollars that are then spent on investments (equipment, vet fees, etc.) that fuel the local economy. Larger farm

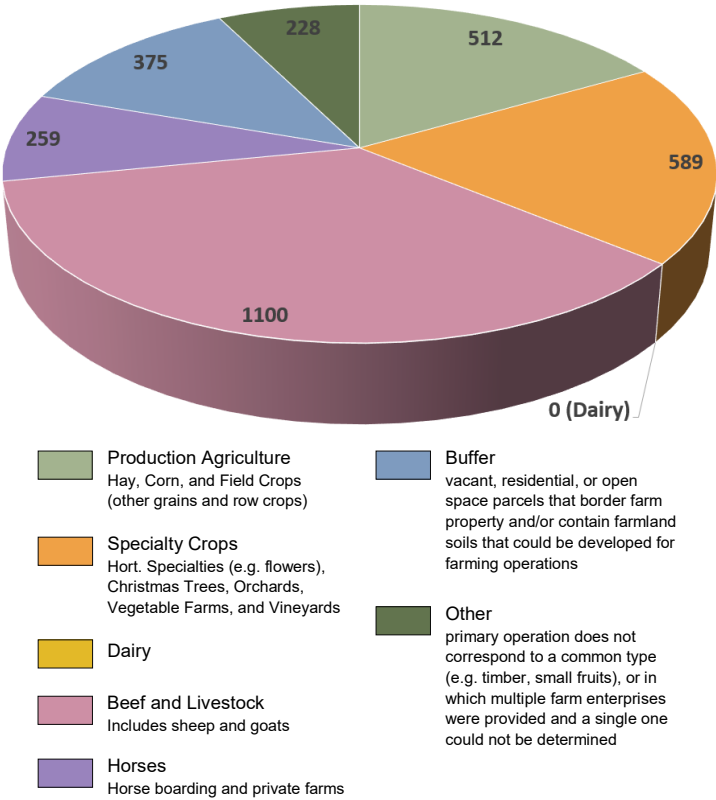


Figure 2. Acreage Distribution by Farm Enterprise Category

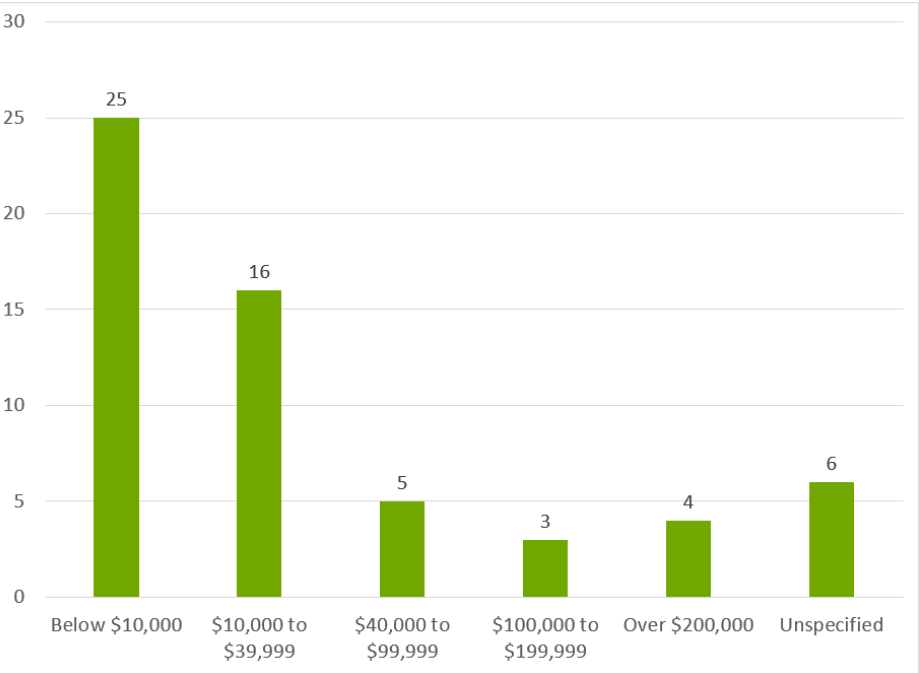


Figure 3. Number of Farm Parcels by reported Capital Investment

Sources:

Agricultural District Recertification Process 2015 for 2016 Recertification. Cornell Cooperative Extension Dutchess County. April 2016. Updated 2022.

Census and Demographics. Dutchess County Department of Planning and Development. Retrieved from <http://co.dutchess.ny.us/countygov/departments/planning/plcensus.htm>, June 2015.

CCEDC provides equal program and employment opportunities. The programs provided by this agency are partially funded by monies received from the County of Dutchess.

operations, although fewer in number, generate higher gross sales and capital investment. A significant number of Hyde Park’s farm parcels (21) had capital investments between \$10,000 and \$100,000, while 7 invested \$100,000 or more (Figure 3). These figures are important to consider when looking at the impact of agriculture in the county, as a large portion of these capital investments go back into the local economy.