

2022

ANNUAL REPORT

Cornell Cooperative Extension
Dutchess County



In neighborhoods, homes, workplaces, and schools, CCE educators work to empower individuals and families with raising children, saving energy and money, growing and preparing food, starting, sustaining businesses, and protecting the environment.

Message from the Association Interim Executive Director & Board President



Board President, Lacie Reilly &
Interim Executive Director, Patricia Claiborne

Having navigated the uncertainties of last year's pandemic recovery we are able to build on our efforts to expand opportunities that improve the quality of life of individuals and communities across Dutchess County. Our innovative and diverse educational programs, initiatives and support services put knowledge to work in pursuit of economic vitality, ecological sustainability, and social well-being.

As outlined in this Annual Report, we are laser-focused on enriching our communities and continue with our mission to:

- Farming and food production, Invasive Species Education
- Parenting, family life and family dynamics, Financial Literacy and Empowerment
- Child health, development, and nutrition
- Immersive youth learning and experiential opportunities through 4-H
- Water, land and energy conservation and management
- Community resilience and preparedness
- Nutrition education and health

Our success has invigorated us by overcoming challenges, and reimagining the way live, work, grow and engage with one another. It's provided us the chance to recognize our collective resiliency and celebrate our diversity. Through the power of partnership, collaboration, and your continued support, the status of Cornell Cooperative Extension Dutchess County is strong.

Much of our mission and efforts have been in combination with volunteers, community partners, faith-based organizations, our local and state elected officials, schools and academic institutions, businesses and community groups and, of course, our farms and agricultural organizations. The sweat equity, donations, sponsorship and volunteerism from within our county has allowed us to continue to *"bring local experience and research-based solutions together, helping New York State families and communities thrive in our rapidly changing world."*

On behalf of our staff and volunteers, we thank you for your continued support, dedication and involvement with Cornell Cooperative Extension!

A handwritten signature in blue ink that reads "Patricia W. Claiborne".

Patricia Claiborne
Interim Executive Director

A handwritten signature in blue ink that reads "Lacie Reilly".

Lacie Reilly
President, Board of Directors



Highlights are featured throughout this report! The QR codes are also links to click for additional information!

Extension At-A-Glance

**Over 220 volunteers provided 25,000+ HOURS =
a value of \$713,500.00+ in our community!**

Source: independentsector.org



**150,500+ youth, adults & families benefited from
programs & services!**

Source: programmatic reporting

STAFF, BOARD, & COMMITTEES



2022 Board of Directors:

Lacie Reilly, *President*
 W.Matthew Trust, *Vice President*
 Mark McLean, *Treasurer*
 Julie Hart, *Secretary*
 Diandria Williams, *At Large*
Program Representatives:
4-H Youth Development:
 Mario Gonzalez
 Katherine Briggs
Environment & Energy:
 Tom Lynch
 Peter Berasi
Agriculture & Horticulture:
 Dr. Mark Condon
 Brendon Foley
Family Consumer Education:
 Judy DiMatteo
 Tomasine Oliphant
CCE State Extension Specialist:
 Adam T. Hughes
Legislative Representative:
 Deirdre Houston
Executive Representative:
 Eoin Wrafter

Patricia Claiborne,
Interim Executive Director
 Marcy Latella,
CCEDC Recording Secretary

Audit Ad-Hoc Committee:
Not operational in 2022

DC Fair Ad-Hoc Committee:
 Matt Trust
 Katie Briggs
 Mario Gonzalez

Finance Committee:
 Mark McLean, *Chair*
 Mario Gonzalez
 Judy DiMatteo
 Katie Briggs

Fund-Development Ad-Hoc Committee:
 Susan Kavy, *Chair*
 Diandria Williams
 Heather Ohlson, *Staff Rep*

Governance Ad-Hoc Committee:
 Patricia Claiborne, *Staff Rep*
 Marcy Latella, *Staff Rep*

Personnel Committee:
 Tomasine Oliphant, *Chair*
 Katie Briggs
 Mario Gonzalez
 Julie Hart

Strategi Plan Ad-Hoc Committee:
 Mario Gonzalez
 Tomasine Oliphant
 Julie Hart

Association Administrative/ Support Staff:
 Patricia D. Claiborne,
Interim Executive Director
 Janet Lee Wendover,
Finance Manager
 Olga Petroff, *Finance*
 Melissa Tan, *Finance*
 Marcy Latella, *Sr. Administrator*
 Porfirio Vargas,
Facilities Coordinator
 Heather Ohlson, *Marketing & Communications Coordinator*
Sr. Administrative Assts:
 Angela Sullivan
 Francheska Kuilan
 Mary Mashburn
 LaQuan Rosario

Agriculture & Horticulture Program Staff:
 Stephanie D. Radin, *Program Leader*
 Miriam Boateng, *Educator*
 Jennifer Fimbel, *Sr. Resource Educator*
 Joyce Tomaselli, *Resource Educator*
Taste NY:
 Lachele Coninx-Wiley,
Market Mgr.
 Liz Esack, *Assistant Mgr.*
 Melissa Hoffmann, *Asst. Coord.*
 Dan Richard, *Facilities Coord.*

Eastern New York Commercial Horticulture Staff:
Vegetable Specialist:
 Teresa Rusinek

Ethan Grundberg
 Maire Ullrich

Dan Donahue, *Tree Fruit Specialist*
 Elizabeth Higgins, *Business Management Specialist*
 Jim Meyers, *Viticulture Specialist*
 Laura McDermott, *Small Fruits and Vegetable Specialist*

Agriculture & Horticulture Program Advisory Committee:
 Cathy Lane, *Chair*
 Lisa Baker
 Dr. Mark Condon
 Amber Coon
 Brendan Foley
 Eugene Valoy

Environment & Energy Program Staff:
 Carolyn Klocker, *Program Leader*
 Sean Carroll,
Sr. Resource Educator
Resource Educator:
 Collin Adkins
 Michelle Gluck
 Anna Harrod-McGrew,
Environmental Educator & NCLI Program Manager
 Kelsey West, *Environmental Educator*

Environment & Energy Program Advisory Committee:
 Pete Berasi
 Jane Lucas
 Tom Lynch
 Richard Mattocks
 Gautam Sethi
 Alex Wolf

Family & Consumer Education Program Staff:
 Jessica Canale, *Program Leader*
Educator:
 Maureen Rodriguez Callamari
 Amber Chantelle Dunlavey

Ashley Morris
 Heather L. Ohlson

Family & Consumer Education Program Advisory Committee:
 Maribeth Rubenstein, *Chair*
 Tomasine Oliphant, *Vice-Chair*
 Barbara Warren, *Secretary*
 Alissa DeLucia
 Ruth Howell-Johnson

IPM Field Crops Specialist:
 Ken Wise, *State-wide IPM Specialist Livestock and Field Crops*

SNAP-Ed Hudson Valley (Regional Program of 9 Counties):
 Shayna Russo,
Regional Program Manager
 Steven Alihonou
 Amanda Conover
 David Cordero
 Erica Dahl
 Megan Dhanabala, *Dutchess*
 Tiffany Glavan
 Bintou Hinds
 Bee Moser
 Josephine Quiocho
 Jenna Ricker
 Maria Vele
 Meghan Young

4-H Youth Development Program Staff:
 Jane Rodd, *4-H Program Leader*
 Samantha Brittain, *Green Teen Program Manager*
 Emily Murnane, *Green Teen Educator*
 Emma Kron, *4-H Program Manager*
Educator:
 Allie Jeffrey
 Joanna Shultz

4-H Youth Development Program Advisory Committee:
 Katie Briggs, *Chair*
 Mario Gonzalez
 Irene Decker
 Mark Price
 Brad Paris

AGRICULTURE & HORTICULTURE

Agricultural and horticultural programming include our Ag Navigator Program, Sustainability, Master Gardeners of Dutchess County, Easter NY Commercial Education, Food Safety and Ag Business Management and Taste NY at Todd Hill!

Ag Navigator Program:

Provided support and information to 14 municipal, 1 Federal and 2 NYS officials that reached out to us for information related to agricultural issues including Highly Pathogenic Avian Influenza (HPAI) continues to be a real concern for wild birds, commercial poultry, and backyard flocks. **Year to date, we have had 400 direct contacts.**

The **Annual Ag Forum and Farming in Dutchess Virtual** series has reached over **150 people**.

Agriculture/Horticulture Sustainability:

Highlights to over **400 direct contacts** in 2022 include:

- Early season concerns regarding the increased cost of fertilizer and its potential impact on crop yields and managing pastures without fertilizers.
- **Integrated Pest Management (IPM)**. Installation and weekly checking of insect traps resulted in early detection to enable corn producers to make an informed decision regarding pesticide applications based on IPM thresholds.



The annual Christmas tree farmers twilight meeting provided a hands-on experience and networking for 18 farmers. Added new Christmas tree farm: assisted with development, species selection, soil sampling and fencing. - *Commercial Horticulture*



Highly Pathogenic Avian Influenza Information

Coordinated a saving in sales tax of \$1500 A MONTH with qualification for NYS Tax Exemption for a Dutchess farm!



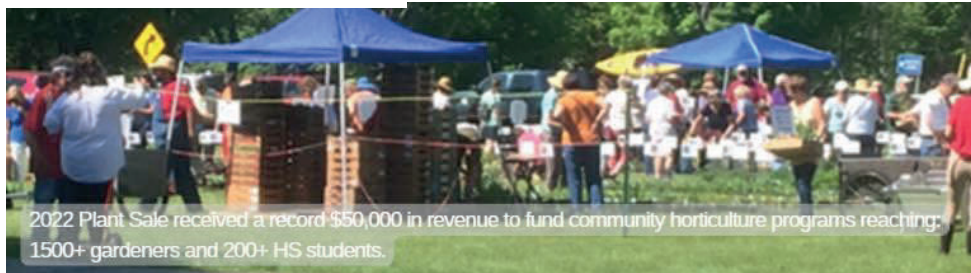
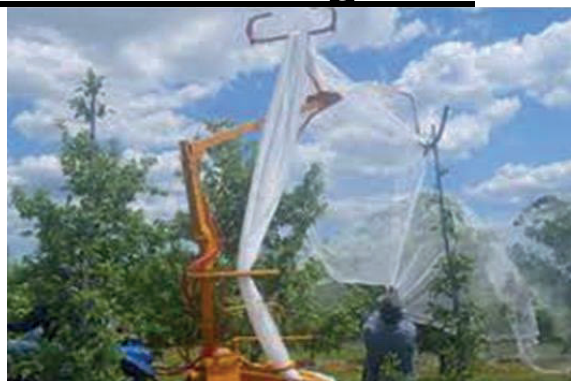
In response to the real threat to agriculture and quality of life in Dutchess County by the Spotted lanternfly, we provided information workshops to train over 150 volunteers to address this crisis. Master Gardener Volunteers talked to nearly 700 people at the Dutchess County Fair and Dutchess Dirt Newsletter articles reached over 2000 each month this summer. - *Community Horticulture*

CCEDC is the **only** entity in NYS to offer an exam preparation course for professional certification offered by the International Society of Arboriculture known as the ISA certified arborist program. 14 participants were educated and prepped for the certification exam.

Eastern NY Commercial Horticulture Education Program:



Regional collaboration providing educational programs to producers: arming them with knowledge to profitably produce and market safe and healthful horticultural crops, contributing to the viability of farms and economic wellbeing. The program focuses on variety evaluation, market development, pest management, and cultural practices.



“Ask the Master Gardener” reached 1500+ visitors to the Dutchess County Fair & 300 other community events. The Horticulture Hotline resolved over **800** inquiries!



Food Safety and Ag Business:



**AGRITOURISM
WEBINAR**
SEPTEMBER 28, 2022
7:00PM | VIA ZOOM

- Created and published a Risk Management Guide: “**NYS Safety in Agricultural Tourism Act**,” providing agritourism operators the ability to avoid liability if provisions of the law are met. [Click here](#) to download!
- Virtual workshops to date have reached approximately 150 people!
- The NYS Grown and Certified Grant program has awarded **3 grants this year totaling \$135,000.00** to help farms obtain food safety compliance and become NYS Grown and Certified. 10 grants have been awarded to date totaling \$325,121.04.
- **28 farmers** participated in a webinar for Farmers of Color (FOC). Topics included:
 - Beginning FOC Experiences & Needs
 - Ag Districts and Ag Value Assessment
 - How to Access Land for Farming
 - Access to Funding, Insurance, and other Programs
 - USDA NRCS Programs
 - USDA FSA Programs
 - NY FarmNet Programs



- \$55,085 -- Dutchess County sales tax re generated by Todd Hill market
- \$836k -- wholesale purchases made to our producers.
- Nearly 120k visitors counted year-to-date.
- 28 new vendors onboarded in 2022.
- Over \$45k in sales generated by Outdoor Farmers' Market vendors.
- 150,000+ people reached- through social media and blogging.
- Managers' goal of staff education channeled through weekly blog posts on new products and agricultural vendors were created and delivered to staff using this modern medium effectively.
- Todd Hill purchasing staff attended live B2B trade shows in NYC and SUNY Adirondack, and organized product scouts in different regions.
- CCEDC-Todd Hill staff met other cohorts to operate Taste NY booth at the New York State Fair.



Visit us

4640 Taconic State Parkway, Poughkeepsie, NY 12603

845-849-0247

tastenyoddhill.com



Instagram @tastenyoddhill



Facebook @tastenytaconic



Twitter @tastenytaconic

FAMILY & CONSUMER EDUCATION (FCE)

Family and community educational services include the Relatives As Parents Program, Financial Literacy education, Parent and Support Education and the NYS Hudson Valley Fish Advisory.



Relatives As Parents (RAPP):



For the past **15 years**, Cornell Cooperative Extension has delivered the Relatives As Parent Program (RAPP) in Dutchess County. RAPP is designed to encourage and promote the provision of services for grandparents and other (kinship) relatives who have taken on the responsibility of surrogate parenting because the parents are unable or unavailable to parent their children.

RAPP addresses the unique needs of kinship family households through comprehensive services including support groups, case management, referrals, education and family engagement and preservation in Dutchess County. ***This year families attended events such as apple and pumpkin picking at Dubois Farm and Fairy House Hunting at Locus Grove!***

Direct positive impact include:

- **25+** families enhanced parenting skills to a new generation of youth!
- **17** children found commonalities and fun with kids *just like them*.
- **28+** times Relative Caregivers come together virtually AND in-person to encourage, empower and support their peers through event and activities!

After a two-year hiatus to virtual events, RAPP has maintained an on-line meeting space AND returned to in-person Intergenerational activities!

25+ families participated in:

- RAPP Annual Picnic at Bowdoin Park (largest attendance to date!)
- Fairy House Hunt at Locust Grove,
- Apple Picking at Dubois Farm
- RAPP Annual Holiday Dinner

Financial Literacy:

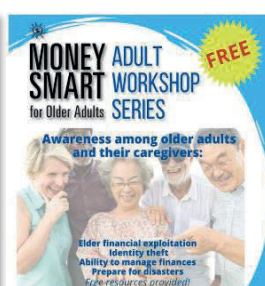
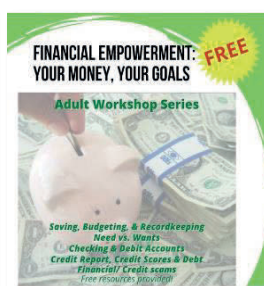
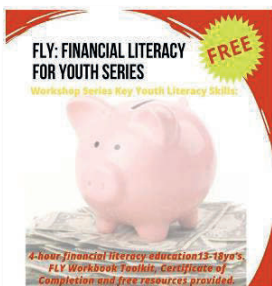


Our **Financial Literacy for Youth (FLY) Program** reached more than **200 12 to 18 year-olds** providing interactive education on needs vs wants, budgeting, saving for college and financial preparations.

NEW THIS YEAR: Free Adult Workshops:

Over 30 adults participated in **Your Money, Your Goals:** financial empowerment materials for adults to meet their financial goals by increasing knowledge, skills, and resources. *These materials were developed by the Consumer Financial Protection Bureau (CFPB).*

Over **25 seniors** participated in the **Money Smart for Older Adults** Program: awareness among older adults and their caregivers on how to prevent exploitation, encourages advance planning and informed financial decision-making. *These materials were jointly by the Federal Deposit Insurance Corporation (FDIC) and the Bureau of Consumer Financial Protection.*



Parenting and Support Education (PASE):

Cornell Cooperative Extension Dutchess County Family & Consumer Education Program

PARENT & SUPPORT EDUCATION (PASE)

Virtual Series: Thursday 10/27, 11/3, 10/17 7PM

FREE



Parenting Skills Workshop Series teaching the 5 fundamentals of great communication with your children within your household.
Apply skills for today and a lifetime!
Registration Required: Maureen Callamari mc2524@cornell.edu 845-677-8223 x122



Our **Parenting Skills Workshop Series (PSWS)** works with our local DC Family Services (DCFS) to educate court mandated families on enhancing parenting skills. **In 2022 we educated more than 166 people!** We run classes weekly in English and in Spanish. This workshop is an important step to reunite families because of the skills and techniques they learn from our researched based parenting program.


Our community-based **Parenting and Support Education (PASE)** class teaches parenting skills to families who are interested in learning how to create better communication and harmony in the household. We work with The Department of Behavioral and Community Health, Project More, the Relatives As Parentings Program and Perinatal and Infant Community Health Collaborative as well as any individuals who would like to know more about parenting.

Hudson River Fish Advisory:

In collaboration with the New York State Department of Health (NYS DOH) our Fish Advisory program helps people make healthier choices about which fish to eat in the Hudson River, how often you should eat fish and best ways to clean and cook fish you catch.


In addition to area programs in local school districts and community events with sensory-friendly educational activities about consumable fish in the Hudson River, the Dutchess County Fish Advisory Program set up in the **Think Differently! Tent** at the Dutchess County Fair in August reaching **over 100 attendees!**

Can You Eat That Striped Bass From the Hudson River?




Striped Bass season is open

Follow the Family & Community Education Program for free helpful tips and resources!




Family activity of fishing on vacation?

Check your catch with the Fish Advisory online.



Follow the Family & Community Education Program for free helpful tips and resources!
Grow your knowledge




The **Fish Advisory Program** set up in the Think Differently! Tent at the Dutchess County Fair this August. More than 100 people were educated with sensory friendly activities about consumable fish in the Hudson River.

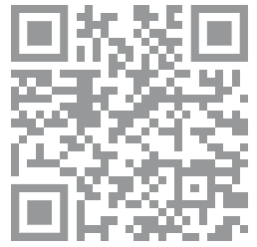
2022 introduced the **FCE Update**; a monthly newsletter distributed to **over 800+ supporters** and program participants throughout Dutchess County providing valuable supplemental information as well as programmatic updates and event opportunities!

facebook.com/fcedutchess



instagram.com/fcedutchess

Environment & Energy



Through education, research and partnerships the Environment and Energy Program empowers individuals and municipal groups to expand their knowledge and actions to protect, restore and enhance the environment of Dutchess County for future generations. Programs include the No Child Left Inside, land-use Planning and Natural Resource Management, energy resources and climate resilience.

No Child Left Inside (NCLI) Program:



Throughout 2022 we have continued our environmental workforce development program **No Child Left Inside**. In addition, to leading programs throughout the year that educate their peers and younger youth about STEM topics, the team of educators develops a community project. This year's community project is allowing the educators to explore and learn more about the Fall Kill Creek in Poughkeepsie through the collection of acoustical data will also learning how to develop outreach materials and resources through tools like ArcGIS Story Maps.



In October environmental educators from Poughkeepsie High School, spent a day educating approximately **100** Krieger Elementary School fifth graders about the biological, physical and chemical components of the "A Day in the Life of the Hudson and Harbor".



Land-use Planning & Natural Resource Management:

Highlights in 2022 include:

- Targeted audiences for Environment & Energy Program: municipal officials, volunteers, municipal conservation advisory committees, Climate Smart community task forces and the County Environmental Management Council. Much is completed in partnership and through the support of the Dutchess County Planning Department.
- **We assisted the Dutchess County Planning Department, in partnership with the Hudson Valley Regional Council and NYSERDA, in organizing 4 training courses focused on Opportunities in Renewable Energy to over 100 attendees representing over 19 Dutchess County communities. These trainings allowed Dutchess County to continue working towards becoming a designated NYS Clean Energy Community.**
- Our **Annual Conservation Advisory Committee and Environmental Management Council Roundtable** brought together 46 representing 15 communities across the County to discuss recent accomplishments, future goals and challenges they are facing.
- In partnership with the **Dutchess County Planning Department**, we are updating the County's Natural Resource Inventory (NRI). We will bring up to date the existing chapters of the NRI and will develop new chapters and content. The update will also include development of a web-platform for hosting the NRI, including an interactive web-map application and a GIS data portal for communities to use.



Online Mapping Tools for Local Conservation Planning

Presenters include:

- **Sean Carroll**, Cornell Cooperative Extension Dutchess County
- **Christine Vanderlan**, NYSDDEC Hudson River Estuary Program
- **Gretchen Stevens**, Hudsonia, Ltd.
- **Julie Hart**, Dutchess Land Conservancy

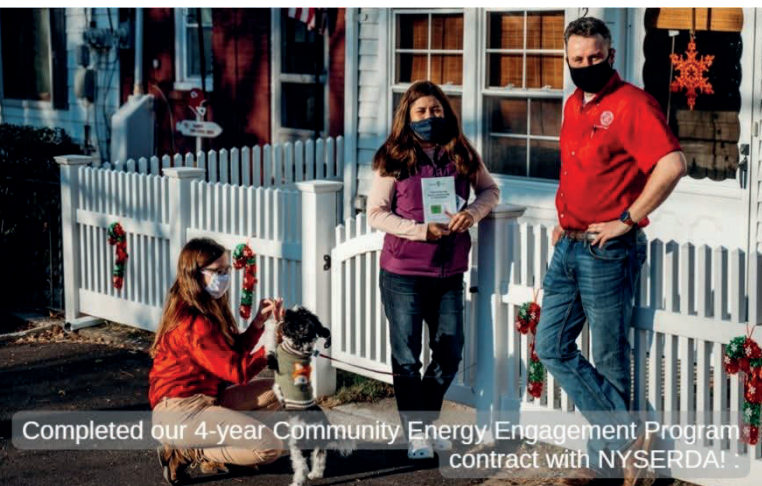
Free event in person! Register today.
Sat, September 10, 2022 8:30 AM – 12:00
2715 Route 44 Millbrook, NY 12545

Cornell Cooperative Extension
Dutchess County



Staff supported **2 communities** in completing mapping of their own community level Natural Resource Inventories through a partnership with the Hudson River Estuary Program.

Energy:



- Since 2018 our regional Energy Advisors have been able to assist 3000 New Yorkers to gain access to energy efficiency and clean energy program and projects through NYSERDA's Community Energy Engagement Program funding.
- September 1st we were **awarded the NYSERDA Regional Clean Energy Hub contract** for the Mid-Hudson region to grow our team and support many more Mid-Hudson residents, small businesses and nonprofits access important energy efficiency programs!
- Helping New Yorkers save money on their energy bills, which is becoming more important than ever .and enhance regional support toward an equitable clean energy economy goal!



Climate Resilience:

Our team continues to work with other CCE Associations and partners across the region and State to help communities adapt to Climate Change. In 2022 our staff worked with nine Dutchess County communities on **11 projects** that help communities adapt and prepare for climate impacts.

Projects included:

- municipal codes and ordinances reviews that include climate resilience recommendations.
- developing website and social media content and materials to highlight a communication's emergency preparedness information.
- partnering with Highway Supervisors to develop a Road Stream inventory and Management Plan for their community.
- providing technical support and assistance to communities to assess where they are in the NYS Climate Smart Communities program and submit for certification.



4-H & YOUTH DEVELOPMENT



Diverse youth programming includes Dutchess County 4-H, Flourishing Farmers, Afterschool Programming, Summer Programs and Green Teen Beacon.

Highlights in 2022 include:

- Approximately **400 youth** participate year-round, and each completed at least one community service event ranging from traditional agriculture to science, arts and crafts.
- **1780** 1-3 graders enjoyed classroom-based education during Ag-In-The-Classroom Week!
- 24 unduplicated youth are employed by CCEDC every year, many who are “at risk” (low income, ESL or identify as part of a minority group)
 - Over **\$40,000 was paid in wages** to the youth to empower self-sufficiency, college prep and family contributions.
- **100%** of youth gained first aid and CPR certification.
- Agricultural youth programming **harvested and donated approximately 1200lb of fresh food!**



Ag-In-The-Classroom Short Program Participants



Outstanding District Level Public Speaking



4-H'er teaching adults about beekeeping



375 club members enrolled in 27 individual clubs throughout Dutchess County communities!



Highlights in 2022 include:

- **270** youth participated in over 14 club events.
- **165** participants in the Spring and Fall Leader Forum!
- **295** youth completed public presentations at the county level. **21** youth regionally.
 - Northeast State Winners:
 - 1st in Speech and
 - 3rd in Demonstration/Illustrated
- **1780** youth participated in Ag Literacy Week events!
- **241** youth participated with **1,864** entries of the Dutchess County Fair including **40** participants in Livestock Judging.



Flourishing Farmers Program:



4-H Flourishing Farmer, Ashley, competing in the Fair Youth Horse Show.

Programs Which Make a Real Impact:

Flourishing Farmers Program serves youth whose need for accommodations require more personalized support.

- Youth with autism, cognitive delays and physical limitations experience all aspects of the 4-H program with support by specialist staff.
- 20 youth exhibited at the Dutchess County Fair alongside (and supported by) their 4-H peers; receiving awards in a packed show arena from County Executive Marcus Molinaro!

After-school programming serving one of our lowest income districts with a high percentage of Hispanic/Latino families is **oversubscribed** and with more funding could be quadrupled!

- Over 40 grade K-3rd children regularly participate in the weekly program.
- Curriculum is centered on **'Produced in NY'** and is helping kids explore what their county and state have to offer in culturally appropriate ways.



After-school Programming:





Green Teen (GT) is a workforce development program in Beacon, NY where youth learn life skills and develop the qualities and skills employers seek through managing a vegetable garden where they grow food to donate to their community.

- The model is so successful that in 2022 we received an appropriation in the NYS budget to model the program in the City of Poughkeepsie.
- We **employ up to 24 unduplicated youth every year**, the majority of who are at risk in some way, such as being low income, ESL or in a minority group.
- In addition, 4-6 youth have the chance to return to the program and take on leadership roles where they help train their peers and work for other non-profits in the community.

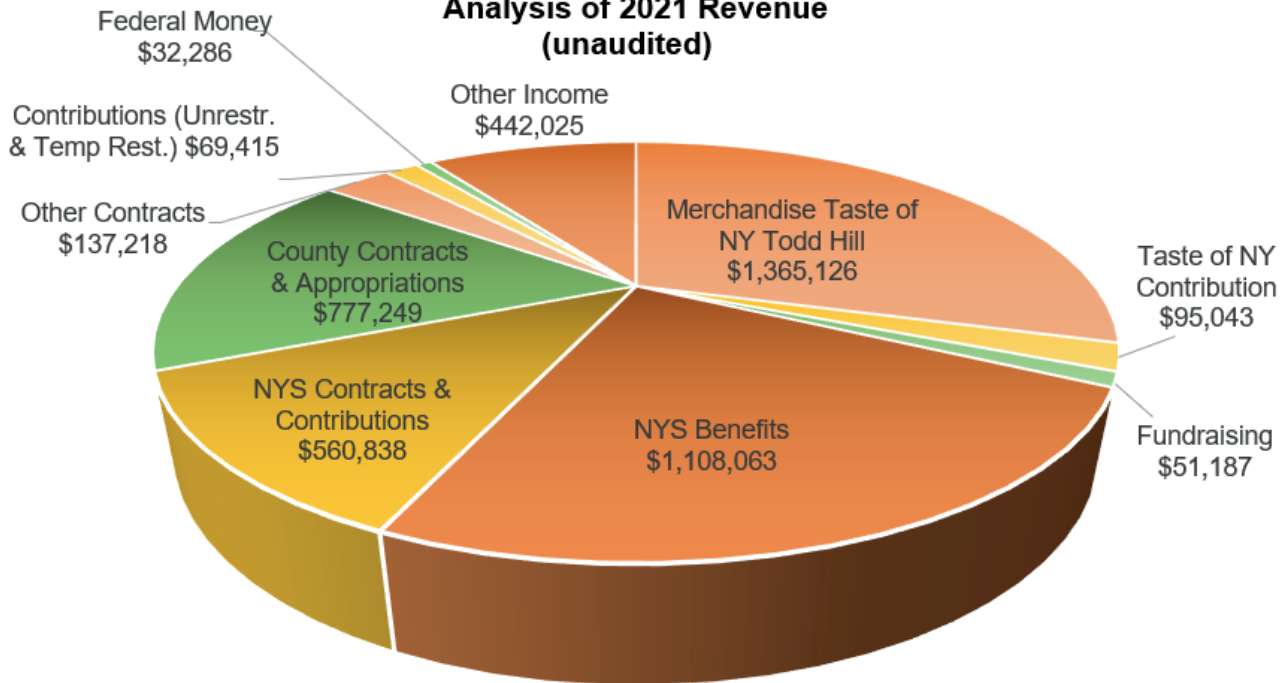
Highlights in 2022 include:

- Over \$40,000 was paid in wages to the youth to empower them to support themselves, save for college and help their families.
- 100% of youth gained first aid and CPR certification.
- **They harvested and donated approximately 1200lb of fresh food.**
- Green Teen youth started and led a weekly after-school program for 8 Middle School youth to share their passion with younger peers.
- By partnering with the City of Beacon, youth created 3 pollinator patches around the city and maintained them to support their environment.



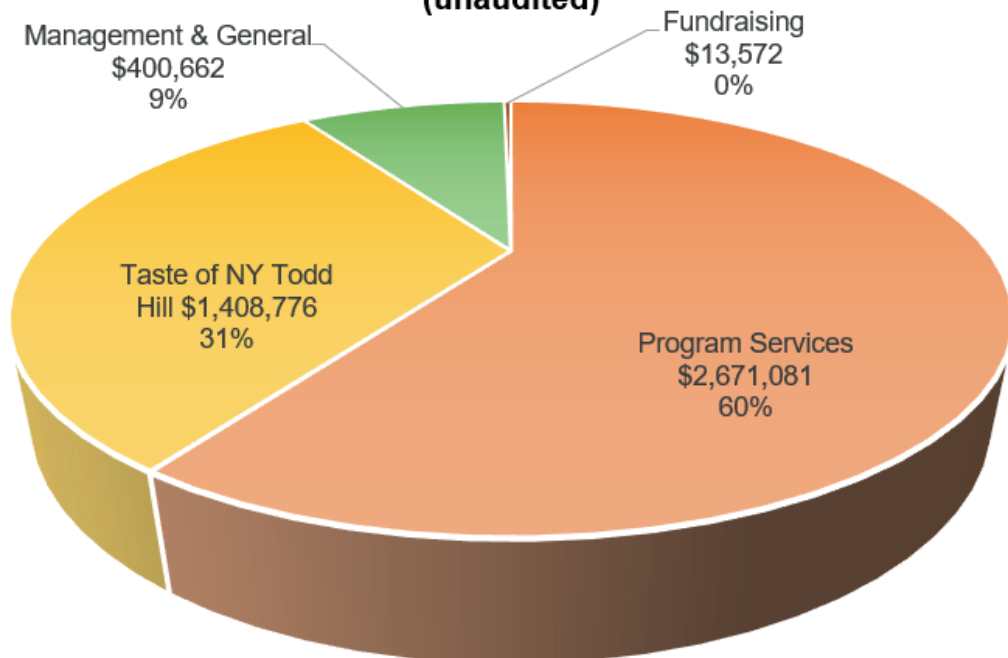
FINANCIAL REPORT

Analysis of 2021 Revenue (unaudited)



Total 2021 Revenue: 4,638,450.00

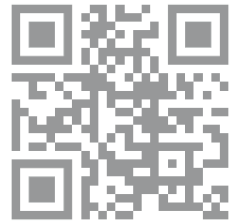
Analysis of 2021 expenses (unaudited)



Total 2021 Revenue: \$4,494,091.00

Supporters & Donors

*Your support helps CCEDC to do more
and to reach more -- youth, adults,
families and businesses in our
communities -- with high-quality,
research-based educational programs
they can trust!*



Eleanor Acworth DVM P.C.
Mark Adams
Sue Adams
R. Aldrich Seal & Stripe Inc.
Carol Anderson
TJ Ashline
Marion & David Baldouf
Harry Baldwin **DPW Farm Bureau**
Ann Bancroft
Maura Ann Barrett
Peter Berasi
Erin Berg
Gayle Bontecou
Beth Bove & Andrew Lane
Lauren Biniaris
David & Marilyn Brands
Janice Brennan
Daniel & Nancy Briggs
Robert Bullions III
Fred Bunnell
Wayne Butler
Karen Canton
Andrew Capitan/Margaret Doyle
Anthony Carbone
Teresa Carriker Thayer
Grace Chartier
Jamie Cheney
James & Elizabeth Chiri
Anne & Cheryl Christen
Lea Cornell
Alicia Crisp
James Crisp
Elizabeth Critchley **CSEA Local 266**
John Cullen
Eileen Cuneo
Cora Mallory & William Davis
Gwen Davis
Michael DeCola
Sybil Del Gaudio
Judith Di Matteo
Linda Digasper
Eileen Doherty

Mary Lou Duffy
Denise & Robert Dunn
Earnhart Family
Walter Effron The Three Arts
Ruth Ehlers Rev. Trust
Mary Ellis
Perry & Mary Eshelman
Christine Ferrero
Ingrid & Gerald Fields
Jill Fieldstein
Maish Freedman
Anne Friedland
Linda Gaines
Christine Gerstle
Ruth & Gregg Gau
Maria Glover
Deborah & Fred Glynn
Diane Goetz
Gloria Goverman
Michael Graham
Alice Granger
Margaret Griemsmann
Curtis & Mary Grosskopf
Martin & Pauline Gyves
Doris Hansen
Fred & Shirley Harbold
Eleanor Harmantas
Douglass & Rae Hart DVM
Julie Hart
Ira Haskell
Ann Hatcher-Grove
Kirsten Heincke
Linda Henning
Doreen Henning
Stefanie Hubert Tapestry
Aimee Hopkins
Karen Johnsen
Susan Kavy
Victoria Kelly
Joyce Kicelian
Pilomena Kiernan
Judy Killmer
Lauren Kingman

Nancy Krupp
Margaret Kuras
Erik & Mechelle Kusko
Beth Ledy
Shirley Lee
Delbert Lee
Edwin Leonard
Vince Liselotte
Pamela & Jeffrey Lovinger,
Jane Mac Leary
Peter Maher
Al Marotta
David Mazzetti Seven Bridges Wealth Management
Mary Lou McCann
David and Deborah Moore
Ruth & Mark Moore-Wilson
Patricia Murphy
Carolyn Marshall
Robert Newman
Denise Nikles
Kulwant Pandey
Ryan Paraggio
David & Jane Parshall
Candis Pasternak Vanguard
Victoria Perotti
Lorrayn Pickerell
Mark Piggott
Adam Pitcher
Catherine Poluzzi
Stephanie Pratt
Eve Prop Family Foundation
Alice & Steve Press
Quaker Valley Farm
Carmella Quattrociocchi
Quattro Farm
Tanya Radford
Nicole Raskopf
James & Carol Ray
Joy Reed
Jodi Reifer
Diana Ritchie
Andrew & Jane Rodd
Janet Roe

Bill & Carol Rohde
Brad & Louise Roller
Leslie Rollins
Paddy Rossbach
James & Lois Russin
Richard Ryan Excavating, Inc.
Virginia Ryan
Donald & Petra Sagliano
Maria Santanna
Mary Beth & Ken Scattergood
Julia Schuette
Lorraine Seach
John Sellingsloh
Martin & Dagni Senzel ESQ.
Sue Serino
Virginia & Edward Sermier
Virginia Sermier
Ann Shershin
Samuel & Gail Simon
Deborah & John Singler
Kathleen Smith
Lucille & Karol Sokol
Mary Sokowski
Nancy Swanson
Ellen Terni
Katrina Thomas The Hope Chest
Felicitas Thorne Thorndale
Matt Trust
Johanna Tomik
Wendy & Russell Urban-Mead
Robert Ulrich Stephen Van Tassel
Helen Vander Voort
Liselotte Vince
Frances Wallin
Robert & Eileen Webb
Janet Wendover
Whalen Real estate
Diandria Williams
Kira Wizner
Anna Young

*Your generous support continues to deliver our programs to enrich the youth and adults within our community.
Please excuse us if we missed your name! We truly appreciate every donor!*



Dairy Nutrition



DUTCHESS LAND CONSERVANCY



Thank you



Collaborators & Funders

Images are arranged to fit, not a particular giving order.



Think **DIFFERENTLY.**



United Way of the Dutchess-Orange Region



Department of Health

Hudson River Estuary Program

NYSERDA



Cornell Water Resources Institute



Berkshire Taconic
COMMUNITY FOUNDATION

Berkshire Taconic
COMMUNITY FOUNDATION

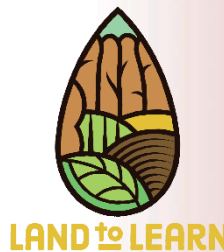
COMMON GROUND

NORTHERN DUTCHESS NEWS
& Creative Living
Southern Dutchess News

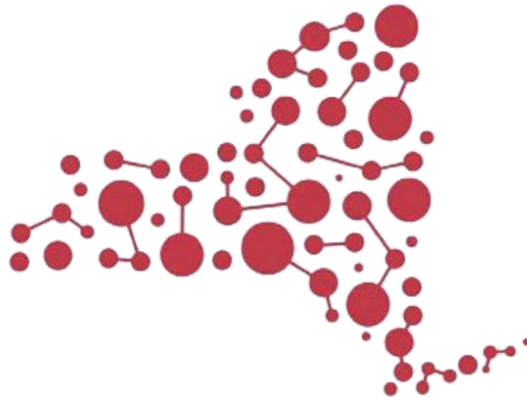
DC Dairy Committee
Millbrook Library
Pleasant Valley Free Library
Howland Public Library
Arlington CSD
Beacon CSD
Carmel CSD*
Dover Union Free School
Haldane CSD*
Hyde Park CSD
Millbrook CSD
Pawling CSD
Pine Plains CSD
Poughkeepsie CSD
Red Hook CSD
Rhinebeck CSD
Spackenkill UFSD
Taconic Hills CSD*
Wappingers CSD
Webutuck (Northeast) CSD
Ralph E. Ogden Foundation
Les Roe Foundation



Dutchess County Agricultural Society, Inc.



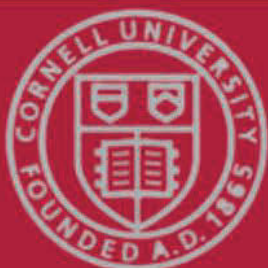
In neighborhoods, homes, workplaces, and schools, CCE educators work to empower individuals and families with raising children, saving energy and money, growing and preparing food, starting, sustaining businesses, and protecting the environment.



Our Mission:

Cornell Cooperative Extension puts knowledge to work in pursuit of economic vitality, ecological sustainability and social well-being. We bring local experience and research-based solutions together, helping New York State families and communities thrive in our rapidly changing world.

Highlights are featured throughout this report. The QR codes are also links to click on for additional information.



CCE Dutchess County

Dutchess County Farm & Home Center
2715 Route 44
Millbrook, New York 12545-5566
TEL: (845) 677-8223
dutchess@cornell.edu

ccedutchess.org | facebook.com/ccedutchess | instagram.com/ccedutchess | twitter.com/CCEDutchess

Green Teen Community
Gardening Program
Beacon Recreation Center
23 West Center Street
Beacon, New York 12508
(845) 831-4287

Taste NY Market at Todd Hill
4640 Taconic State Parkway North
Poughkeepsie, NY 12603
(845) 849-0247