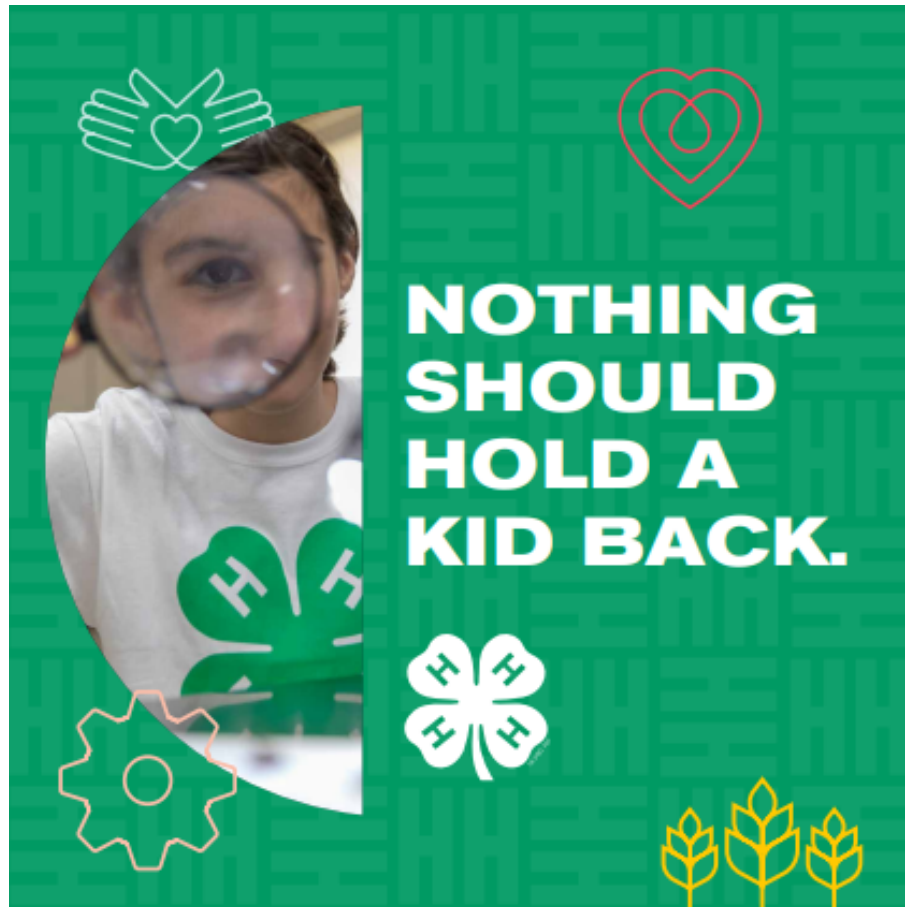


4-H On the Move

Oneida County 315-736-3394

**National
4-H
Week
October
2-8th**

**Fall Clover
Campaign
at TSC.
October
5 - 16th**



Quick and easy way to register for 4-H activities and events
on the website! **SCROLL AND CLICK ON THE CLOVER**

SAVE THIS LINK:

<http://cceoneida.com/4-h-youth-development> or goo.gl/1YDnn7



4-H Club Reorganization Meetings

Each year the Oneida County 4-H Program conducts reorganizational meetings to help 4-H Club organizational leaders prepare for the upcoming 4-H Year.

Mandatory in-person trainings will take place on
Wednesday, October 5th @ 6:30pm OR Saturday, October 8th @ 10am

REGISTER HERE: : https://reg.cce.cornell.edu/4HMeet2022_230

What's the purpose? To get the new 4-H year off to a super start by discussing and asking questions. Each club will receive all the latest information along with packets containing 4-H Enrollment materials, as well as a look at the kits and supplies available from the 4-H Office.

Who's invited? All current/future 4-H Leaders and parents (this includes parents of individual members). Each club must have at least one representative at one of the meetings. 4-H Club Organizational Leaders are strongly encouraged to attend. Plan to stay the entire time.

If you not currently enrolled as a volunteer or member and are interested in learning more about Oneida County 4-H please plan on attending one of the meetings mentioned above.

Joann craft supplies will be available to Oneida County Leaders and Members during the Leader Meetings on Oct 9th and 12th. If you have questions please contact Lynette 315-736-3394 x105

Attention All Leaders and Parent Volunteers!!

Sexual Harassment Training

CCE has launched a mandatory, 10 minute online version of Sexual Harassment Prevention Training for Volunteers including our 4-H Volunteer Leaders, Parent Volunteers and Casual Volunteers. You can access the training via the following link: <http://blogs.cornell.edu/ccevolunteertraining/required-training/>. All of our current 4-H volunteers must complete this training and annually thereafter.

Please follow the steps below to take care of this volunteer requirement in a timely manner!

CCE Sexual Harassment Prevention Training for Volunteers

The purpose of this training is to set forth a common understanding about what is and what is not acceptable in the CCE environment. All volunteers are expected to:

- 1) Watch video
- 2) Confirm participation and understanding of expectations (Click this Link, fill out and submit the form. Please list CCE Oneida as the local association where you volunteer)

Communicate with local CCE Staff about your participation (Forward the e-mail confirmation that you receive to Casey Holbert at cch244@cornell.edu)

ATTENTION NEW MEMBERS THIS MEETING IS FOR YOU TOO!

LEADERS WE NEED TO KNOW!!! Please Record Your Volunteer Hours

Being recipients of Federal Funding we are required to maintain specific records and to report requested statistics.

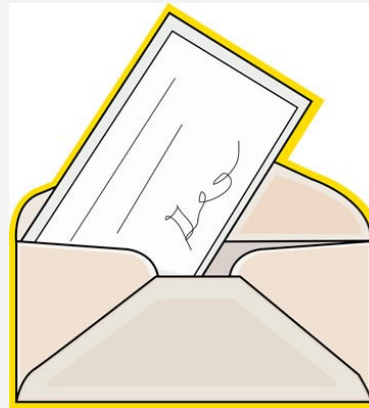
Moving into 2022! We are now required to submit the number of volunteer hours our volunteers have completed in the name of 4-H.

So if you volunteered please go to the Faces of 4-H registration and record your hours there.

https://reg.cce.cornell.edu/Facesof4H2023_230

PLEASE MAIL YOUR MONTHLY CLUB FINANCIAL STATEMENT AND ATTENDANCE RECORDS TOGETHER

Attention Casey
CCE Oneida County 4-H
121 Second St.



4-H Membership Cards

4-H Membership cards will be sent to everyone that has completed their 4-H paperwork. Please check with youth, and volunteers to make sure they have received and can show you their membership card.

If they do not have a card then they should email Casey at cch244@cornell.edu.

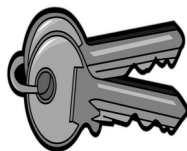
Now doing Online Enrollment

Permission to Raise Funds

Remember if you are planning a fundraising activity the generates income you must submit a request to the office at least 2 weeks prior to the event. Find the form here:



<http://cceoneida.com/4-h-youth-development/club-management-tools>



REMINDER: if you are using a room at CCE after normal business hours it is your responsibility to make sure you have a key to open the building. Keys may be signed out at the front desk and must be returned to the drop box after the event. Rooms should be returned as they were found and if the event is taking place on the weekends garbage should be removed and light turned off.

Please do not prop any doors open to allow access to the building. Place a sign on the front door directing late comers to call your cell phone to obtain admittance to the building.

Call the front desk to reserve your room

Have questions about an event after business hours?

If the event requires a registration chances are your answer can be found on the registration link. Click on the clover and search for the event. The landing page can be most helpful!

<http://cceoneida.com/4-h-youth-development>

Go to the 4-H page and look for the clover.



JOIN THE PRIVATE ONEIDA COUNTY 4-H FACEBOOK PAGE

If you are in 4-H and interested in working with other 4-H Members on different types of projects, post on the PRIVATE Oneida County 4-H Facebook page. If you are looking for someone to do things with, **POST**. If you know of an event happening locally **POST** it. If you are looking for a club, want to start a club, or are an existing club looking for Members, **POST**.



Faces of 4-H Community Service/Leadership Project

4-H Members, Leaders and Parents. If you have volunteered in the name of 4-H we want to hear about it!



Faces of 4-H will provide us an opportunity to showcase the great things you are doing in the community.

Logging your hours into the system will not only give us a running total of the projects you are working on but it will also give us an opportunity to spotlight your efforts in our newsletters and create displays at County and the State Fairs.

Follow this link to record your community service hours

https://reg.cce.cornell.edu/Facesof4H2023_230

Leaders we need to know your volunteer hours

Being recipients of Federal Funding we are required to maintain specific records and to report requested statistics. Starting in 2021 we are now required to submit the number of volunteer hours our volunteers have completed in the name of 4-H. Use the link above to submit.

NEW FOR 2023 Community Service/Leadership County Project Medals

Youth who log in 6 hours of community service/leadership that directly supports Oneida County 4-H may automatically earn corresponding County Project Medals.

Examples of Oneida County Community Service/Leadership opportunities:

- October- Food Drive
- November- Food Drive
- December-Handmade Holidays, Food Drive
- January-Cloverbud Days at Runnings
- February-Science Days helper
- March-Horse Bonanza, Horse Communications
- April- Public Presentation Room Host/Hostess
- May-Farm Fest
- June- Office work for the fair. Help in the Parker Scripture Gardens, Help at Horse Show & Arena Cleanup
- July- Ring clean up prior to the Boonville Fair. Jr Superintendent Boonville Fair
- August-Teen Leaders at the NY State Fair
- September-Teen Leaders at the NY State Fair

Pre-registration may be required and we may limit the number of volunteers needed at some events. Contact the office with questions.
315-736-3394
Lisa Ext 122, Casey 108, Lynette 105

Oneida County 4-H **FOOD DRIVE**

Seeking 4-H Clubs or youth who would like to organize a Food Drive to benefit our local food pantries.

1. Pick a location where you want to collect goods (School, Library, Local Business)
2. Create a poster about the project
 - A. Make sure you mention Oneida County 4-H
 - B. Make sure you have a start date and end date
 - C. Tell the public which food pantry you will be donating to
 - D. Include a list of the types of food accepted
 - E. Have a box or basket for people to place their donation in.
3. Make sure you register your project so we can do a news release telling the public where they can donate. https://reg.cce.cornell.edu/4hfooddrive_230

What Types of Donations Accepted*

Canned Vegetables
Breakfast Cereal
Canned Fruit

Canned Pasta
Fruit Juice
Peanut Butter

Tuna Beans
Soup

Oatmeal
Pasta
Rice

*Please no perishable or expired food

Donations accepted
Starting
**10/1/22-
12/19/22**



Please contact
Lisa Farney
if you have
any questions.
315-736-3394
Ext. 122
lb553@cornell.edu



Leadership/Community Service Opportunity

LOOKING TO JOIN A CLUB ?

Do you know a teen that would enjoy meeting new people and visiting different parts of the country?



Teen Council Members meet monthly (first Thursday of the month). They work throughout the year on Leadership, Community Service and Work Force Development Skills.

Teen Council Members go on an exchange trip every other year. If you are interested in learning more about Teen Council please contact Mary Jo Jennings (jenningsmaryjo3@gmail.com)

If you need to reach us,
call 315-736-3394.

- Lisa Ext. 122
Lb553@cornell.edu
- Lynette Ext. 105
lsk23@cornell.edu
- Casey Ext. 108
cch244@cornell.edu



Send me information
about 4-H
in Oneida County



<https://goo.gl/adhCBG>

HANDMADE HOLIDAYS



Seeking clubs and volunteers that would like to run an activity booth and possibly a bake sale in December at Runnings in Rome. This would be an excellent opportunity for your youth to gain some community service hours and hold a club fundraiser. The 4-H Office can supply the craft items if need be or if you have a project in mind you can do that. Please contact Lynette with any questions by November 1st. 315-736-3394 x105

On The Move—(USPS-408): Published bi-monthly by Cornell Cooperative Extension of Oneida County, 121 Second St., Oriskany, New York 13424-9799. Entered into the U.S. Postal System at Oriskany, phone (315)736-3394.

Postmaster—Send all address changes to 4-H Office, Cornell Cooperative Extension, 121 Second St., Oriskany, NY 13424-9799.

The enclosed material is part of the Cornell Cooperative Extension of Oneida County 4-H program. 4-H is the youth component of Cornell Cooperative Extension. The information given herein is supplied with the understanding that no discrimination is intended and no endorsement by Cornell Cooperative Extension is implied

New County Clubs 2022-23

Meetings to be held at CCE Oneida



ARTS AND CRAFTS

Join us on 1/19, 2/23, 3/23, 4/20, 5/18 from 6-7:30pm as we paint, color, draw, carve, and sew. Ages 8 and up.

In order to have supplies, registrations are required 2 weeks in advance of the meeting and there may be a cost to participate.



Spend some time doing activities and crafts geared for youth ages 5-7
Dates 11/16, 12/21, 1/18, 2/15, 3/15, 4/19, 5/17, 6/21 from 5:30-7pm
Registration is Required.

Explore the World of Animals

Starting November 7th we will meet the 1st and 3rd Mondays of each month from 7 to 8pm at the 4-H Office
Registration Required



Quick and easy way to register for 4-H activities and events on the website! **SCROLL AND CLICK ON THE CLOVER**

SAVE THIS LINK:

<http://cceoneida.com/4-h-youth-development> or goo.gl/1YDnn7



Join us as we recognize the accomplishments of our current members and party with the new as we

Ice Skate into 2023 with Oneida County 4-H

Sunday October 23, 2022

3pm to 4:30pm

Whitestown Ice Arena

1 Championship Way

Whitesboro, NY 13492

**FREE ADMISSION
FOR ENROLLED 4-H
MEMBERS+FAMILY**

SKATE RENTALS - \$5

**PRE-REGISTER TO BE ENTER
IN A DOOR PRIZE.**



Registration Link: https://reg.cce.cornell.edu/4-HIceSkate_230

Thank You **JOANN** fabric and craft stores®



NOTHING SHOULD HOLD A KID BACK

Donate at the register or
[DONATE NOW](#)



WITH JOANN 4-H REWARDS ON EVERY PURCHASE, EVERY DAY!

Current & Alumni members, parents of members, volunteers and 4-H staff can save 15% off total in-store and online purchases every day with 4-H Rewards. JOANN guarantees a minimum donation to National 4-H Council of \$250,000 per year until June 2023 through a combination of customer donations during campaigns, minimum of 2.5% of sales from the JOANN 4-H Rewards Card, and \$0.50 for every yard purchased of custom 4-H fabric.

JOANN fabrics is a huge supporter of Oneida County 4-H. Their product donations allow us the opportunity to offer many craft projects. Check out the Art in the Bucket Projects at the 2022 Oneida County Fair in Boonville.

**We are also able to donate to the Thea Bowman house during the Christmas Holiday
Thanks to Joann we will also had lots of prizes to give way at 2023 Farm Fest.**

FREE CRAFT SUPPLIES

Joann supplies will be available to Oneida County Leaders and Members during the Leader Meetings on Oct 5th and 8th. If you have questions please contact Lynette 315-736-3394 x105.

This is a great opportunity to gather craft supplies for your club to use throughout the year.

If you do take supplies your members must submit at least one project for evaluation and review at the Boonville Fair or equivalent.

JOIN US

2022 *Cornell Cooperative Extension of Oneida County Annual Meeting and Stakeholders Banquet* will be held at **Twin Ponds Golf & Country Club, 169 Main Street, New York Mills, NY 13417 on Thursday October 27, 2022, at 6:00 PM**, registration begins at 5:30PM.

REGISTRATION DEADLINE DATE IS October 23, 2022. Registration will be handled on a **FIRST-COME BASIS AND SEATING IS LIMITED.** Each person must register individually at

https://reg.cce.cornell.edu/Annualmeeting2022_230 or go to our Events Page on the website.

Registration at the event begins at 5:30PM followed by dinner, Board of Director elections, business, and program reports. This year, we are recognizing Friends of CCE for their continued participation and support of the Association. We will wrap up the evening with door prizes.

Leaders and Parent Volunteers

THEME MAGICAL CREATURES



A specific set of artistic challenges for 4-H and Cloverbud youth. Participants agree to complete all projects. Completed projects must be judged and on display at the 2023 Boonville Fair or equivalent. Supplies distributed in December, Registration opens Nov 1st Supplies are limited

CLOVERBUDS AGES 5-7

1. MINI DRAGON EGGS
2. CARDBOARD DRAGON
3. FAIRY HOME
4. PEGASUS/UNICORN

4-H MEMBERS AGES 8-19

1. PAPER MACHE JELLYFISH
2. SCARAB BEETLES
3. DRAGON EGGS
4. UNICORN/PEGASUS
5. DRAGON HEAD

Registration required https://reg.cce.cornell.edu/artinbucket2023_230

Fluorescent Fish*

Participants in this activity will have their project included in a special "Under the Sea display"

Youth will be provided a plywood cutout and fluorescent paint.

https://reg.cce.cornell.edu/4HFFish2022_230

This will fall under Section DC Class 1A in the 2023 Boonville Fair Book.

What's in my Barn Cloverbuds only

Follow this link to register for this activity. Participants will be given a specific frame and are encouraged to decorate however they choose. Project should represent the animals equipment and family that can be found in their barn.

https://reg.cce.cornell.edu/WIMB2023_230

This will fall under Section DC Class 1B in the 2023 Boonville Fair Book.

ATTENTION: Looking for supplies to use on your Art in the Bucket and Fan Favorite projects? Be sure to stop by the office to go through the Joann Fabrics donations Oct 1-14.

Save the date July 20, 2023 5-8pm Boonville Fair
Project Judging will take place here at CCE Oneida

Faux Stained Glass*

If you enjoy coloring with sharpie markers then this simple craft project is perfect for you.

Please take the time to register so that we can give you the proper frame to use for this project.

If you aren't sure how to do this project we are offering craft workshops in 2023. Can't come to the workshop then when you pick up the frame I can show you what you need to do.

Registration required. https://reg.cce.cornell.edu/4HFSG2023_230

This will fall under Section DC Class 1B of the 2023 Boonville Fair Book



Seed Art

Youth wishing to enter the Seed Art Fan Favorite must pre-register so everyone has the same frame.

https://reg.cce.cornell.edu/4Hseedart2022_230

Using seeds like sunflower, peas, beans, corn, pumpkin, etc. Youth will create a collage. The only rule other than having fun is that 95% of the canvas must be covered in seeds.

This will fall under Section DC Class 1A in the 2023 Boonville Fair book

Not sure what seed art is check out this you Tube Video

<https://youtu.be/HKMGBbihyuM>



Soap Carving*

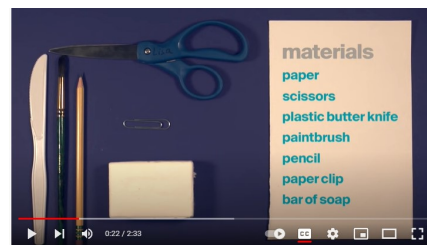
Grab a bar of soap and transform it into something unique. You can carve it with simple tools like paperclips or a bobby pin.

We will be offering a class on this project in January. Check out the County Craft Club registration

Since we are not providing any supplies for this project there is no need for you to register. However to show it at the Boonville Fair you will need to register it.

This will fall under Section DB Class D in the 2023 Boonville Fair Book.

Not sure how to do soap carving check out this you Tube Video <https://youtu.be/Y17RweezGi8>



All Fan Favorites Must be judged and on display at the 2023 Oneida County Boonville Fair. Deadline to register for these projects is May 1st 2023 *Sorry these are not Cloverbud projects

RULES: IF LESS THAN FIVE YOUTH PARTICIPATE/
EXHIBIT AN ITEM WITHIN A PROJECT THE FAN
FAVORITE WILL NOT BE AVAILABLE.

BOONVILLE FAIR 2023 FAN FAVORITE

4-H Youth Building NY State Fair Results

Name	Description	Award
Andrew Kilgore	Cricut design on a wooden sign	Red
Andrew Kilgore	Cricut design on a shirt	Blue
Ashley Higgins	Ashley's Mehindi Hand	CB
Ashley Higgins	Red, Yellow, White, and Blue Plate Weaving	CB
Blaise Larry	Art in Bucket-Who Am I?-Bouncin' Blaise J	Blue
Blaise Larry	Art in Bucket-Bucket of Good-Foothills Rural C M	Blue
Caleb Beers	Orange Duffle Bag with navy blue handles	Blue
Casey Romans	Paper mache rabbit	Blue
Casey Romans	Iris Sculpture	Blue
Charles P Larry	Creative Communication-Poultry & Avian Flu	Blue
Eden Cjaka	Rabbit soap carving	Red
Elijah Kilgore	Cricut design on wooden sign	CB
Elijah Kilgore	Bird House - Great Swamp Conservancy Kit	CB
Ethan Henderson	Terry Minion bucket	CB
Kaitlyn Sherwood	Black CO2 car	Blue
Kyleigh Jones	Hand drawn cow on canvas, painted in pastel colors	Blue
Lanelle Vile	Colorful maned lion	Blue
Lily Higgins	Lily's Mehindi Hand	CB
Lily Higgins	Rainbow Plate Weaving	CB
Macylinn Doxstader	Cardboard cut out of Western rider	Blue
Macylinn Doxstader	Not for profit charity bucket full of candy, drink	Blue
May Sunday	Barbie inspired mermaid	Blue
Melanie Beers	Blue backpack, white lace designs, braided ties	Blue
Nan Zar	Who Am I- Nan Zar	Blue
Nan Zar	Soap Carving of Artemis	Purple
Niko Long	Minion bucket	CB
P Ella Larry	Art in Bucket: Who Am I? Ella	Red
P Ella Larry	Recycled Pallet Seasonal Sign-Scarecrow/Snowman	Red
Rachael Higgins	Sudsy Bunny Soap Carving	Red
Rachael Higgins	A Day At The Beach Yarn Painting	Red
Raelinn Doxstader	Donkey yarn art with Sunset	Blue
Raelinn Doxstader	Sunflower toy bucket	Blue
Sofia McAuslan	Ceramic Peacock	Blue

4-H Spotlight



PURPLE ROSETTE RECIPIENT Nan Zar

Below is her written submission for the NY State Fair

You learned and experienced many new things in creating this exhibit. Some of the most important were.

I learned to always make sure to have multiple options at hand. In case my first idea didn't work out as planned. It is important to choose the best option that will display my skills to the fullest

because I knew I could do better instead of just sticking to the first idea. This was my first time working with soap medium and I wanted to push myself to accomplish what I originally envisioned. It was also important that I plan my next steps and take breaks. I wanted to take my time since I was constantly cutting down the shape of my soap. I knew how difficult it would be to fix the piece if I accidentally carved out a major part of the exhibit.



Describe how you could build on your experience within this project area and further challenge yourself.

I never knew that Oneida County 4-H offered a series of projects known as Art in the Bucket. Taking on all the projects including the soap carving gave me the chance and encouragement to constantly work with a new medium. I can build on my experience by taking the skills that I gained during soap carving and apply it to other projects which helps me build more range and improve precision in more 3-D work. For example, I used my Exacto knife for the entirety of the exhibit and I've been able to work with that tool more confidently later on.

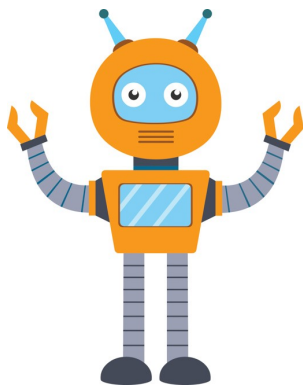
Challenges faced and how I over came them

When I was given the challenge to carve soap I instantly knew I wanted to imitate classical Greek and Renaissance sculptures. Because of how the material and texture can turn out to be like real stone carvings done by Michelangelo. I wanted to make an original piece but that became my first problem as the shape and texture didn't turn out as I wanted. I solved that issue by getting a new bar of soap which worked to my favor because of its curvature It allowed me to carve the bust of Artemis. Artemis sculptures have always stood out to me and having multiple references available all over the internet guided me to study different angles and carve the way I wanted to display my abilities to the best. I drew a outline of Artemis on a sticky note and then carved that outline onto my soap. This helped me make my exhibit more 3 dimensional. There was also another problem where the Artemis crown was falling apart, but I quickly fixed that by molding the soap back with water. I felt that I was able to accomplish my goal and work through every detail of my exhibit. From the small ear carving to the protruding neck by establishing the right references to work with.

Thank you so much for your time and reading through everything I wrote.

I deeply appreciate it.

Sincerely, Nan Zar.



Is anyone interested in starting a robotics club or LEGO League Team?

We have a Team that is disbanding and I have a fair amount of robotic supplies that would be very helpful for a group that wants to get started with the LEGO Robotics competition.

The former leader would also be willing to share how she ran her club and how to get started.

A LEGO Robotics team requires consistent commitment from everyone involved.

Thus the word TEAM. Follow this link to learn more. <https://www.firstlegoleague.org/>

What is WHEP?

The WHEP (National Wildlife Habitat Education Program) is a hands-on environmental education program. WHEP also provides participants an opportunity to test their wildlife knowledge in a friendly competition, as each state supporting WHEP conducts an annual contest where teams of 3-4 similarly aged individuals gather. The winning senior (14-19 years of age) WHEP team from each state earns the right to attend the annual National WHEP Contest, typically held the last full week of July. The national contest moves to a different state each year.

WHEP is a 4-H and FFA youth natural resource program dedicated to teaching wildlife and fisheries habitat management to junior and senior level (ages 8-19) youth in the United States.

To learn more visit <https://www.whep.org/>

Contact Lynette if you have a youth interested in participating in the competitions. Lsk23@cornell.edu



Journey North
Tracking migrations and seasons



Hummingbirds



Monarch Butterflies



American Robins



Tulip Test Gardens



Sunlight and Seasons



Symbolic Migration



Weather and Songbird Migration



Mystery Class



Bald Eagle



Earthworms



Onoles



Leaf-Out



Ice-Out



Common Loons



Red-winged Blackbird



Frogs



Barn Swallow



Whooping Cranes



Gray Whales



Livecam

My family always had a contest as to who would spot the return of migratory birds like: Robins, Swallows, Hummingbirds, and Red winged Blackbirds.

If you want to follow the migration and share your sightings check out the Journey North website:
<https://journeynorth.org/>

Oneida County 4-H Archery Has Started!

We are seeking adults willing to take the Archery Instructor and Coordinator course so that we can offer this activity to more youth. Please contact 4-H Staff Lynette 315-736-3394 x105 or our volunteer leader, Justin Beers at: waltonwarriors60@hotmail.com

14

Promote Arbor Day with Your Artwork

Each year the public is invited to submit photography and/or artwork to be considered for the State Arbor Day Poster. DEC prints thousands of posters for distribution to the 3,500 NYS schools, the NYS Fair, and other venues. It is a long time tradition and the posters have become collectors items for many.

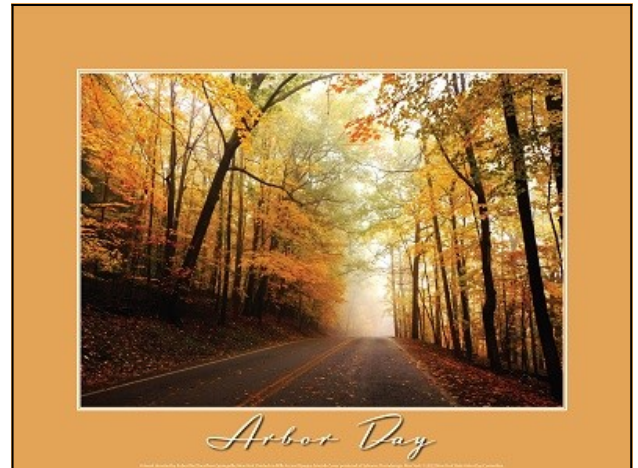
The 2023 Arbor Day Poster Contest is open for submissions starting 9/12/2022.

Contest Rules

- Both photographs and original artwork (paintings, drawings, etc.) may be submitted.
 - Photographs must be taken in New York State, and artwork must be of a NYS location.
 - Healthy trees without major defects tend to receive preference in judging.
 - Photos or digital scans of artwork must be submitted electronically and the quality must be at least 300 dpi at 8"x10".
 - Model consent forms are required for any person who is a focus of a photo, or if the photo features a partially or wholly visible face or likeness.
 - In any uncertain situation, assume that model consent is required.
 - Only **one submission per person** is allowed.
- Submissions must be received by 12/31/2022.**

To learn more follow this link

<https://www.dec.ny.gov/lands/5274.html>



UNITED STATES POSTAL SERVICE® (All Periodicals Publications Except Requester Publications)

1. Publication Title: On the Move Bi Monthly

2. Issue Frequency: Bi Monthly

3. Issue Date for Circulation Data Below: Aug/Sept 22

4. Issue Periodicity: 6

5. Number of Issues Published Annually: 6

6. Annual Subscription Price: 20.00

7. Complete Mailing Address of Known Office of Publication (Not printer) (Street, city, county, state, and ZIP+4®):
121 Second St. Ocrisany NY 13424
 Lynette S Kay
 315-736-3374 x 105

8. Complete Mailing Address of Headquarters or General Business Office of Publisher (Not printer):
121 Second St Ocrisany NY 13424
 Lynette S Kay
 121 Second St Ocrisany NY 13424

9. Full Names and Complete Mailing Addresses of Publisher, Editor, and Managing Editor (Do not leave blank):
 Publisher (Name and complete mailing address):
LYNETTE S KAY 121 Second St Ocrisany NY 13424
 Editor (Name and complete mailing address):
SAME AS ABOVE
 Managing Editor (Name and complete mailing address):

10. Owner (Do not leave blank. If the publication is owned by a corporation, give the name and address of the corporation immediately followed by the names and addresses of all individuals owning or holding 1 percent or more of the total amount of stock. If not owned by a corporation, give the names and addresses of all individuals owning or holding 1 percent or more of the total amount of stock. If owned by a partnership or other unincorporated firm, give its name and address as well as those of each individual owner. If the publication is published by a corporation or other organization, give its name and address.)
 Full Name: Office of Onondaga County 4H
 Complete Mailing Address: 121 Second St Ocrisany NY 13424

11. Known Bondholders, Mortgagees, and Other Security Holders Owning or Holding 1 Percent or More of Total Amount of Bonds, Mortgages, or Other Securities. If none, check box: None

12. Tax Status (For completion by nonprofit organizations authorized to mail at nonprofit rates) (Check one)
 The purpose, function, and nonprofit status of this organization and the exempt status for federal income tax purposes:
 Has Not Changed During Preceding 12 Months
 Has Changed During Preceding 12 Months (Publisher must submit explanation of change with this statement)

PS Form 3526, July 2014 (Page 7 of 4) (See instructions page 4) PSN: 7530-01-000-9001

13. Publication Title: On the Move Bi Monthly Newsletter

14. Issue Date for Circulation Data Below: Aug/Sept 22

15. Issue Frequency: Bi Monthly

16. Issue Periodicity: 6

17. Issue Date for Circulation Data Below: Aug/Sept 22

18. Total Number of Copies (Net press run): 174,666 163

19. Total Paid Distribution (Sum of 19b (1), (2), (3), and (4)) 174,666 163

20. Total Free or Nominal Rate Distribution (Sum of 19c (1), (2), (3) and (4)) 174,666 163

21. Total Paid Distribution (Sum of 19b (1), (2), (3) and (4)) 174,666 163

22. Total Free or Nominal Rate Distribution (Sum of 19c (1), (2), (3) and (4)) 174,666 163

23. Total Paid Distribution (Sum of 19b (1), (2), (3) and (4)) 174,666 163

24. Total Free or Nominal Rate Distribution (Sum of 19c (1), (2), (3) and (4)) 174,666 163

25. Total Paid Distribution (Sum of 19b (1), (2), (3) and (4)) 174,666 163

26. Total Free or Nominal Rate Distribution (Sum of 19c (1), (2), (3) and (4)) 174,666 163

27. Total Paid Distribution (Sum of 19b (1), (2), (3) and (4)) 174,666 163

28. Total Free or Nominal Rate Distribution (Sum of 19c (1), (2), (3) and (4)) 174,666 163

29. Total Paid Distribution (Sum of 19b (1), (2), (3) and (4)) 174,666 163

30. Total Free or Nominal Rate Distribution (Sum of 19c (1), (2), (3) and (4)) 174,666 163

31. Total Paid Distribution (Sum of 19b (1), (2), (3) and (4)) 174,666 163

32. Total Free or Nominal Rate Distribution (Sum of 19c (1), (2), (3) and (4)) 174,666 163

33. Total Paid Distribution (Sum of 19b (1), (2), (3) and (4)) 174,666 163

34. Total Free or Nominal Rate Distribution (Sum of 19c (1), (2), (3) and (4)) 174,666 163

35. Total Paid Distribution (Sum of 19b (1), (2), (3) and (4)) 174,666 163

36. Total Free or Nominal Rate Distribution (Sum of 19c (1), (2), (3) and (4)) 174,666 163

37. Total Paid Distribution (Sum of 19b (1), (2), (3) and (4)) 174,666 163

38. Total Free or Nominal Rate Distribution (Sum of 19c (1), (2), (3) and (4)) 174,666 163

39. Total Paid Distribution (Sum of 19b (1), (2), (3) and (4)) 174,666 163

40. Total Free or Nominal Rate Distribution (Sum of 19c (1), (2), (3) and (4)) 174,666 163

41. Total Paid Distribution (Sum of 19b (1), (2), (3) and (4)) 174,666 163

42. Total Free or Nominal Rate Distribution (Sum of 19c (1), (2), (3) and (4)) 174,666 163

43. Total Paid Distribution (Sum of 19b (1), (2), (3) and (4)) 174,666 163

44. Total Free or Nominal Rate Distribution (Sum of 19c (1), (2), (3) and (4)) 174,666 163

45. Total Paid Distribution (Sum of 19b (1), (2), (3) and (4)) 174,666 163

46. Total Free or Nominal Rate Distribution (Sum of 19c (1), (2), (3) and (4)) 174,666 163

47. Total Paid Distribution (Sum of 19b (1), (2), (3) and (4)) 174,666 163

48. Total Free or Nominal Rate Distribution (Sum of 19c (1), (2), (3) and (4)) 174,666 163

49. Total Paid Distribution (Sum of 19b (1), (2), (3) and (4)) 174,666 163

50. Total Free or Nominal Rate Distribution (Sum of 19c (1), (2), (3) and (4)) 174,666 163

51. Total Paid Distribution (Sum of 19b (1), (2), (3) and (4)) 174,666 163

52. Total Free or Nominal Rate Distribution (Sum of 19c (1), (2), (3) and (4)) 174,666 163

53. Total Paid Distribution (Sum of 19b (1), (2), (3) and (4)) 174,666 163

54. Total Free or Nominal Rate Distribution (Sum of 19c (1), (2), (3) and (4)) 174,666 163

55. Total Paid Distribution (Sum of 19b (1), (2), (3) and (4)) 174,666 163

56. Total Free or Nominal Rate Distribution (Sum of 19c (1), (2), (3) and (4)) 174,666 163

57. Total Paid Distribution (Sum of 19b (1), (2), (3) and (4)) 174,666 163

58. Total Free or Nominal Rate Distribution (Sum of 19c (1), (2), (3) and (4)) 174,666 163

59. Total Paid Distribution (Sum of 19b (1), (2), (3) and (4)) 174,666 163

60. Total Free or Nominal Rate Distribution (Sum of 19c (1), (2), (3) and (4)) 174,666 163

61. Total Paid Distribution (Sum of 19b (1), (2), (3) and (4)) 174,666 163

62. Total Free or Nominal Rate Distribution (Sum of 19c (1), (2), (3) and (4)) 174,666 163

63. Total Paid Distribution (Sum of 19b (1), (2), (3) and (4)) 174,666 163

64. Total Free or Nominal Rate Distribution (Sum of 19c (1), (2), (3) and (4)) 174,666 163

65. Total Paid Distribution (Sum of 19b (1), (2), (3) and (4)) 174,666 163

66. Total Free or Nominal Rate Distribution (Sum of 19c (1), (2), (3) and (4)) 174,666 163

67. Total Paid Distribution (Sum of 19b (1), (2), (3) and (4)) 174,666 163

68. Total Free or Nominal Rate Distribution (Sum of 19c (1), (2), (3) and (4)) 174,666 163

69. Total Paid Distribution (Sum of 19b (1), (2), (3) and (4)) 174,666 163

70. Total Free or Nominal Rate Distribution (Sum of 19c (1), (2), (3) and (4)) 174,666 163

71. Total Paid Distribution (Sum of 19b (1), (2), (3) and (4)) 174,666 163

72. Total Free or Nominal Rate Distribution (Sum of 19c (1), (2), (3) and (4)) 174,666 163

73. Total Paid Distribution (Sum of 19b (1), (2), (3) and (4)) 174,666 163

74. Total Free or Nominal Rate Distribution (Sum of 19c (1), (2), (3) and (4)) 174,666 163

75. Total Paid Distribution (Sum of 19b (1), (2), (3) and (4)) 174,666 163

76. Total Free or Nominal Rate Distribution (Sum of 19c (1), (2), (3) and (4)) 174,666 163

77. Total Paid Distribution (Sum of 19b (1), (2), (3) and (4)) 174,666 163

78. Total Free or Nominal Rate Distribution (Sum of 19c (1), (2), (3) and (4)) 174,666 163

79. Total Paid Distribution (Sum of 19b (1), (2), (3) and (4)) 174,666 163

80. Total Free or Nominal Rate Distribution (Sum of 19c (1), (2), (3) and (4)) 174,666 163

81. Total Paid Distribution (Sum of 19b (1), (2), (3) and (4)) 174,666 163

82. Total Free or Nominal Rate Distribution (Sum of 19c (1), (2), (3) and (4)) 174,666 163

83. Total Paid Distribution (Sum of 19b (1), (2), (3) and (4)) 174,666 163

84. Total Free or Nominal Rate Distribution (Sum of 19c (1), (2), (3) and (4)) 174,666 163

85. Total Paid Distribution (Sum of 19b (1), (2), (3) and (4)) 174,666 163

86. Total Free or Nominal Rate Distribution (Sum of 19c (1), (2), (3) and (4)) 174,666 163

87. Total Paid Distribution (Sum of 19b (1), (2), (3) and (4)) 174,666 163

88. Total Free or Nominal Rate Distribution (Sum of 19c (1), (2), (3) and (4)) 174,666 163

89. Total Paid Distribution (Sum of 19b (1), (2), (3) and (4)) 174,666 163

90. Total Free or Nominal Rate Distribution (Sum of 19c (1), (2), (3) and (4)) 174,666 163

91. Total Paid Distribution (Sum of 19b (1), (2), (3) and (4)) 174,666 163

92. Total Free or Nominal Rate Distribution (Sum of 19c (1), (2), (3) and (4)) 174,666 163

93. Total Paid Distribution (Sum of 19b (1), (2), (3) and (4)) 174,666 163

94. Total Free or Nominal Rate Distribution (Sum of 19c (1), (2), (3) and (4)) 174,666 163

95. Total Paid Distribution (Sum of 19b (1), (2), (3) and (4)) 174,666 163

96. Total Free or Nominal Rate Distribution (Sum of 19c (1), (2), (3) and (4)) 174,666 163

97. Total Paid Distribution (Sum of 19b (1), (2), (3) and (4)) 174,666 163

98. Total Free or Nominal Rate Distribution (Sum of 19c (1), (2), (3) and (4)) 174,666 163

99. Total Paid Distribution (Sum of 19b (1), (2), (3) and (4)) 174,666 163

100. Total Free or Nominal Rate Distribution (Sum of 19c (1), (2), (3) and (4)) 174,666 163

101. Total Paid Distribution (Sum of 19b (1), (2), (3) and (4)) 174,666 163

102. Total Free or Nominal Rate Distribution (Sum of 19c (1), (2), (3) and (4)) 174,666 163

103. Total Paid Distribution (Sum of 19b (1), (2), (3) and (4)) 174,666 163

104. Total Free or Nominal Rate Distribution (Sum of 19c (1), (2), (3) and (4)) 174,666 163

105. Total Paid Distribution (Sum of 19b (1), (2), (3) and (4)) 174,666 163

106. Total Free or Nominal Rate Distribution (Sum of 19c (1), (2), (3) and (4)) 174,666 163

107. Total Paid Distribution (Sum of 19b (1), (2), (3) and (4)) 174,666 163

108. Total Free or Nominal Rate Distribution (Sum of 19c (1), (2), (3) and (4)) 174,666 163

109. Total Paid Distribution (Sum of 19b (1), (2), (3) and (4)) 174,666 163

110. Total Free or Nominal Rate Distribution (Sum of 19c (1), (2), (3) and (4)) 174,666 163

111. Total Paid Distribution (Sum of 19b (1), (2), (3) and (4)) 174,666 163

112. Total Free or Nominal Rate Distribution (Sum of 19c (1), (2), (3) and (4)) 174,666 163

113. Total Paid Distribution (Sum of 19b (1), (2), (3) and (4)) 174,666 163

114. Total Free or Nominal Rate Distribution (Sum of 19c (1), (2), (3) and (4)) 174,666 163

115. Total Paid Distribution (Sum of 19b (1), (2), (3) and (4)) 174,666 163

116. Total Free or Nominal Rate Distribution (Sum of 19c (1), (2), (3) and (4)) 174,666 163

117. Total Paid Distribution (Sum of 19b (1), (2), (3) and (4)) 174,666 163

118. Total Free or Nominal Rate Distribution (Sum of 19c (1), (2), (3) and (4)) 174,666 163

119. Total Paid Distribution (Sum of 19b (1), (2), (3) and (4)) 174,666 163

120. Total Free or Nominal Rate Distribution (Sum of 19c (1), (2), (3) and (4)) 174,666 163

121. Total Paid Distribution (Sum of 19b (1), (2), (3) and (4)) 174,666 163

122. Total Free or Nominal Rate Distribution (Sum of 19c (1), (2), (3) and (4)) 174,666 163

123. Total Paid Distribution (Sum of 19b (1), (2), (3) and (4)) 174,666 163

124. Total Free or Nominal Rate Distribution (Sum of 19c (1), (2), (3) and (4)) 174,666 163

125. Total Paid Distribution (Sum of 19b (1), (2), (3) and (4)) 174,666 163

126. Total Free or Nominal Rate Distribution (Sum of 19c (1), (2), (3) and (4)) 174,666 163

127. Total Paid Distribution (Sum of 19b (1), (2), (3) and (4)) 174,666 163

128. Total Free or Nominal Rate Distribution (Sum of 19c (1), (2), (3) and (4)) 174,666 163

129. Total Paid Distribution (Sum of 19b (1), (2), (3) and (4)) 174,666 163

130. Total Free or Nominal Rate Distribution (Sum of 19c (1), (2), (3) and (4)) 174,666 163

131. Total Paid Distribution (Sum of 19b (1), (2), (3) and (4)) 174,666 163

132. Total Free or Nominal Rate Distribution (Sum of 19c (1), (2), (3) and (4)) 174,666 163

133. Total Paid Distribution (Sum of 19b (1), (2), (3) and (4)) 174,666 163

134. Total Free or Nominal Rate Distribution (Sum of 19c (1), (2), (3) and (4)) 174,666 163

135. Total Paid Distribution (Sum of 19b (1), (2), (3) and (4)) 174,666 163

136. Total Free or Nominal Rate Distribution (Sum of 19c (1), (2), (3) and (4)) 174,666 163

137. Total Paid Distribution (Sum of 19b (1), (2), (3) and (4)) 174,666 163

138. Total Free or Nominal Rate Distribution (Sum of 19c (1), (2), (3) and (4)) 174,666 163

139. Total Paid Distribution (Sum of 19b (1), (2), (3) and (4)) 174,666 163

140. Total Free or Nominal Rate Distribution (Sum of 19c (1), (2), (3) and (4)) 174,666 163

141. Total Paid Distribution (Sum of 19b (1), (2), (3) and (4)) 174,666 163

142. Total Free or Nominal Rate Distribution (Sum of 19c (1), (2), (3) and (4)) 174,666 163

143. Total Paid Distribution (Sum of 19b (1), (2), (3) and (4)) 174,666 163

144. Total Free or Nominal Rate Distribution (Sum of 19c (1), (2), (3) and (4)) 174,666 163

145. Total Paid Distribution (Sum of 19b (1), (2), (3) and (4)) 174,666 163

146. Total Free or Nominal Rate Distribution (Sum of 19c (1), (2), (3) and (4)) 174,666 163

147. Total Paid Distribution (Sum of 19b (1), (2), (3) and (4)) 174,666 163

148. Total Free or Nominal Rate Distribution (Sum of 19c (1), (2), (3) and (4)) 174,666 163

149. Total Paid Distribution (Sum of 19b (1), (2), (3) and (4)) 174,666 163

150. Total Free or Nominal Rate Distribution (Sum of 19c (1), (2), (3) and (4)) 174,666 163

151. Total Paid Distribution (Sum of 19b (1), (2), (3) and (4)) 174,666 163

152. Total Free or Nominal Rate Distribution (Sum of 19c (1), (2), (3) and (4)) 174,666 163

153. Total Paid Distribution (Sum of 19b (1), (2), (3) and (4)) 174,666 163

154. Total Free or Nominal Rate Distribution (Sum of 19c (1), (2), (3) and (4)) 174,666 163

155. Total Paid Distribution (Sum of 19b (1), (2), (3) and (4)) 174,666 163

156. Total Free or Nominal Rate Distribution (Sum of 19c (1), (2), (3) and (4)) 174,666 163

157. Total Paid Distribution (Sum of 19b (1), (2), (3) and (4)) 174,666 163

158. Total Free or Nominal Rate Distribution (Sum of 19c (1), (2), (3) and (4)) 174,666 163

159. Total Paid Distribution (Sum of 19b (1), (2), (3) and (4)) 174,666 163

160. Total Free or Nominal Rate Distribution (Sum of 19c (1), (2), (3) and (4)) 174,666 163

161. Total Paid Distribution (Sum of 19b (1), (2), (3) and (4)) 174,666 163

162. Total Free or Nominal Rate Distribution (Sum of 19c (1), (2), (3) and (4)) 174,666 163

163. Total Paid Distribution (Sum of 19b (1), (2), (3) and (4)) 174,666 163

164. Total Free or Nominal Rate Distribution (Sum of 19c (1), (2), (3) and (4)) 174,666 163

165. Total Paid Distribution (Sum of 19b (1), (2), (3) and (4)) 174,666 163

166. Total Free or Nominal Rate Distribution (Sum of 19c (1), (2), (3) and (4)) 174,666 163

167. Total Paid Distribution (Sum of 19b (1), (2), (3) and (4)) 174,666 163

168. Total Free or Nominal Rate Distribution (Sum of 19c (1), (2), (3) and (4)) 174,666 163

169. Total Paid Distribution (Sum of 19b (1), (2), (3) and (4)) 174,666 163

170. Total Free or Nominal Rate Distribution (Sum of 19c (1), (2), (3) and (4)) 174,666 163

171. Total Paid Distribution (Sum of 19b (1), (2), (3) and (4)) 174,666 163

172. Total Free or Nominal Rate Distribution (Sum of 19c (1), (2), (3) and (4)) 174,666 163

173. Total Paid Distribution (Sum of 19b (1), (2), (3) and (4)) 174,666 163

174. Total Free or Nominal Rate Distribution (Sum of 19c (1), (2), (3) and (4)) 174,666 163

175. Total Paid Distribution (Sum of 19b (1), (2), (3) and (4)) 174,666 163

176. Total Free or Nominal Rate Distribution (Sum of 19c (1), (2), (3) and (4)) 174,666 163

177. Total Paid Distribution (Sum of 19b (1), (2), (3) and (4)) 174,666 163

178. Total Free or Nominal Rate Distribution (Sum of 19c (1), (2), (3) and (4)) 174,666 163

179. Total Paid Distribution (Sum of 19b (1), (2), (3) and (4)) 174,666 163

180. Total Free or Nominal Rate Distribution (Sum of 19c (1), (2), (3) and (4)) 174,666 163

181. Total Paid Distribution (Sum of 19b (1), (2), (3) and (4)) 174,666 163

182. Total Free or Nominal Rate Distribution (Sum of 19c (1), (2), (3) and (4)) 174,666 163

183. Total Paid Distribution (Sum of 19b (1), (2), (3) and (4)) 174,666 163

184. Total Free or Nominal Rate Distribution (Sum of 19c (1), (2), (3) and (4)) 174,666 163

185. Total Paid Distribution (Sum of 19b (1), (2), (3) and (4)) 174,666 163

186. Total Free or Nominal Rate Distribution (Sum of 19c (1), (2), (3) and (4)) 174,666 163

187. Total Paid Distribution (Sum of 19b (1), (2), (3) and (4)) 174,666 163

188. Total Free or Nominal Rate Distribution (Sum of 19c (1), (2), (3) and (4)) 174,666 163

189. Total Paid Distribution (Sum of 19b (1), (2), (3) and (4)) 174,666 163

190. Total Free or Nominal Rate Distribution (Sum of 19c (1), (2), (3) and (4)) 174,666 163

191. Total Paid Distribution (Sum of 19b (1), (2), (3) and (4)) 174,666 163

192. Total Free or Nominal Rate Distribution (Sum of 19c (1), (2), (3) and (4)) 174,666 163

193. Total Paid Distribution (Sum of 19b (1), (2), (3) and (4)) 174,666 163

194. Total Free or Nominal Rate Distribution (Sum of 19c (1), (2), (3) and (4)) 174,666 163

195. Total Paid Distribution (Sum of 19b (1), (2), (3) and (4)) 174,666 163

196. Total Free or Nominal Rate Distribution (Sum of 19c (1), (2), (3) and (4)) 174,666 163

197. Total Paid Distribution (Sum of 19b (1), (2), (3) and (4)) 174,666 163

198. Total Free or Nominal Rate Distribution (Sum of 19c (1), (2), (3) and (4)) 174,666 163

199. Total Paid Distribution (Sum of 19b (1), (2), (3) and (4)) 174,666 163

200. Total Free or Nominal Rate Distribution (Sum of 19c (1), (2), (3) and (4)) 174,666 163

201. Total Paid Distribution (Sum of 19b (1), (2), (3) and (4)) 174,666 163

202. Total Free or Nominal Rate Distribution (Sum of 19c (1), (2), (3) and (4)) 174,666 163

203. Total Paid Distribution (Sum of 19b (1), (2), (3) and (4)) 174,666 163

204. Total Free or Nominal Rate Distribution (Sum of 19c (1), (2), (3) and (4)) 174,666 163

205. Total Paid Distribution (Sum of 19b (1), (2), (3) and (4)) 174,666 163

206. Total Free or Nominal Rate Distribution (Sum of 19c (1), (2), (3) and (4)) 174,666 163

207. Total Paid Distribution (Sum of 19b (1), (2), (3) and (4)) 174,666 163

208. Total Free or Nominal Rate Distribution (Sum of 19c (1), (2), (3) and (4)) 174,666 163

209. Total Paid Distribution (Sum of 19b (1), (2), (3) and (4)) 174,666 163

210. Total Free or Nominal Rate Distribution (Sum of 19c (1), (2), (3) and (4)) 1

CLOVERBUDS

CLOVERBUDS ARE YOUTH AGES 5-7

NEW!

Arts and Crafts opportunities for the



Don't want to commit to the full Art in a Bucket consider the Projects on pages 10 and 11

Contact Lynette with questions about submitting other projects

315-736-3394 x105

New Cloverbud Club starting in November of 2022

Join us here at CCE Oneida for a monthly get together with projects and activities designed for our Cloverbud Members.

5:30-7pm Dates 11/16, 12/21, 1/18, 2/15, 3/15, 4/19, 5/17, 6/21 from 5:30-7pm

Registration will be required so that we have enough supplies on hand.

Cloverbud 4-H CONTEST

Submit individual photos of you and your decorated Halloween pumpkin to our Facebook page and win a prize.
One entry per youth.

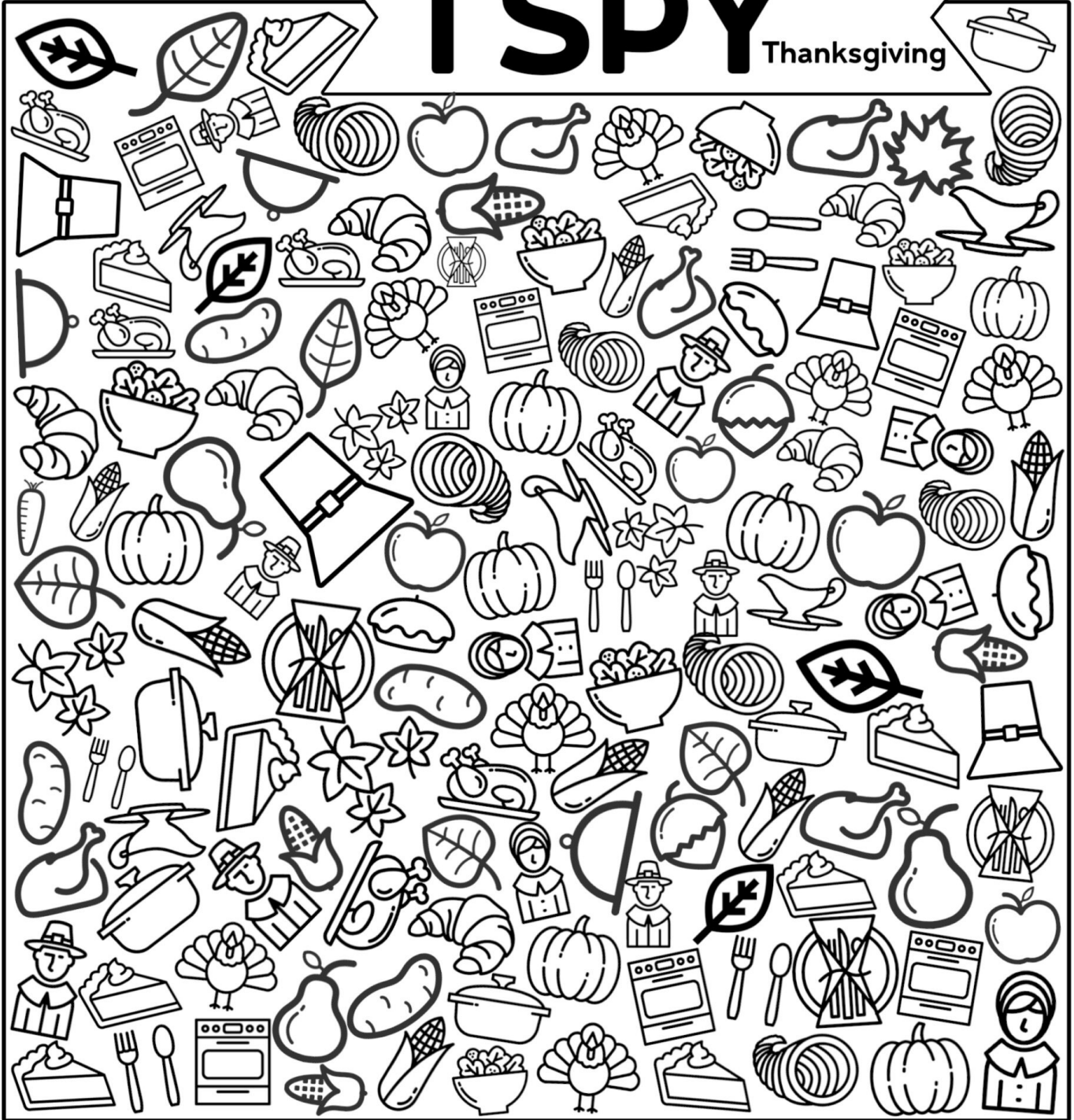


Oneida County 4-H, New York

Private group · 329 members

I SPY

Thanksgiving



- | | | | | | | | | | | | | | | | | | | | |
|---|--|---|--|---|--|---|--|---|--|---|--|---|--|---|--|---|--|---|--|
| 2 | | 4 | | 4 | | 5 | | 4 | | 5 | | 7 | | 4 | | 6 | | 5 | |
| 1 | | 6 | | 7 | | 1 | | 3 | | 6 | | 7 | | 4 | | 7 | | 5 | |
| 3 | | 3 | | 4 | | 6 | | 2 | | 7 | | 5 | | 9 | | 6 | | 3 | |

BACK AT THE BARN



Congratulations to the 2022 NYS Fair Participates.

Oneida County Youth Competed in various events such as Dairy Judging, Livestock Skill-a-thon, Livestock Judging, Swine Show, Dairy Show, Dog Show



NYS 2022 Dairy and Livestock Participates:

- Chase Willson
- Landon Willson
- Whitney Ptaszek
- Mason Ziemba
- Elizabeth Schieferstine
- Noah Britton
- Addison Claudio



*For Any Animal Science Program Questions contact Casey at
E: cch244@cornell.edu P: (315)736-3394 Ext. 108*



Did you know.... To show an animal at the Boonville Oneida County fair in the 4-H Show it does **NOT** have to be a purebred or registered animal?

For Example:

- Dairy Show—Grade Class
- Beef , Swine, Sheep or Meat Goats Show—Commercial Class
- Dairy Goats— AOB or Recorded Grade Class
- Livestock Species offer Market Classes
- Rabbit/Cavy—Pet Class
- Email Casey to learn more about the different options for each species.



NEW: Oneida County 4-H Animal Science Club Starting November 7th!!



Sunday	Monday	Tuesday	Wednesday	Thursday	Friday	Saturday
						1 Start of the New 4-H Year!!
2 Start of Food Drive	3 Year-End Financial Statement Due	4	5 Enrollment/ Leader Meeting 6:30pm	6	7	8 Enrollment/ Leeder Meeting 10am
9	10 County Medal Interviews	11	12	13	14	15
16	17	18	19	20	21 ABC TRIP	22
23 Skating into 2023 3pm to 4:30pm	24	25	26	27	28	29
30	31					

If you see these 4-H Members wish them a

Happy Birthday!!



Arjun Aravind	Kendall Curry	Jacob Burns Jr.	Zayne Legacy
Bladen Lohr	Madeline Jones	Whitney Ptaszek	Dixie Wilson
Jacob Martin	Melanie Beers	Naya Leslie	Landon Willson
Avonlea Scouten	Ariel Glanz	Niko Long	Addison Claudio
Allie Sperry	Cecilia Meays	Abigail LaFave	Selby Young
Timothy van Lieshout	Machaela Hartman	Lauren Curry	Paige Alesia
Frances Jones	Seth Cady	Holly Glanz	Elliott Meays
Giuliana Colucci	Eleanor Stephenson	Uriah Dibble	Addison Snider
Lucy Vogel	Robin Litts	Briley Ely	Madeline Snider
		Adelyn Capron	Zachary Adams

Sunday	Monday	Tuesday	Wednesday	Thursday	Friday	Saturday
		1 Club Monthly Financial Statement Due	2	3	4	5
6	7 Animal Science Club Meeting 7to8pm	8	9	10	11 Veterans Day	12
13	14	15	16 Cloverbud Club Meeting 5:30 to 7pm	17	18	19 End of Food Drive
20	21 Animal Science Club Meeting 7to8pm Topic: Rabbit/Cavy	22	23 Office Closed	24 Thanksgiving	25 Office Closed	26
27	28	29	30			

Apple Corn Chili

Ingredients (makes 4 servings)

2 tablespoons olive oil (divided)
 8 ounces boneless, skinless chicken breast (cut to 1/2" cubes)
 1 medium onion (chopped)
 2 cloves garlic (minced)
 1-15.2 oz. can yellow corn (no-salt-added, drained)
 2 red apples, such as Brae burn, Empire, or Fuji (chopped, skin on)
 1/2 tablespoon ground cumin
 1/8 teaspoon cayenne pepper (if desired)
 1-15 oz. can black beans (no-salt-added, drained and rinsed)
 4 1/2 oz. can diced green chilies (drained)
 2 teaspoons chicken bouillon (sodium-free)

Directions

- In a stockpot, heat 1 tbsp. olive oil; add chicken and brown (about 5 minutes). Remove chicken from pan.
- Heat remaining olive oil in same pot; add onions and garlic and sauté until soft.
- Add corn and sauté until golden brown. Add apple, cumin, and cayenne pepper (if desired); cook about 3-4 minutes. Let cool about 5 minutes.
- Set aside about 1 cup of mixture. Purée remainder in food processor, blender, or by mashing (adding a portion of water, if needed.) Return to pot.
- Add browned chicken, black beans, chilies, bouillon, and water. Bring to boil and simmer about 15 minutes. Chicken should be cooked to 165 °F.
- To serve, ladle chili into bowls and top with non-puréed portion of apple corn mixture. Add optional toppings.



Optional toppings per serving:
 1/4 cup sour cream (reduced-fat)

Sunday	Monday	Tuesday	Wednesday	Thursday	Friday	Saturday
				1 Deadline to Re-Enroll	2 Club Monthly Financial Statement Due	3
4	5 Animal Science Club Meeting 7to8pm Topic Rabbit/Cavy	6	7	8	9	10 Rabbit/Cavy Exhibition Show Tentative
11	12	13	14	15	16	17
18	19 Animal Science Club Meeting 7to8pm	20	21 Cloverbud Club Meeting 5:30 to 7pm	22	23	24 Christmas Eve
25 Christmas	26 Office Closed	27	28	29	30 Office Closed	31 New Years Eve

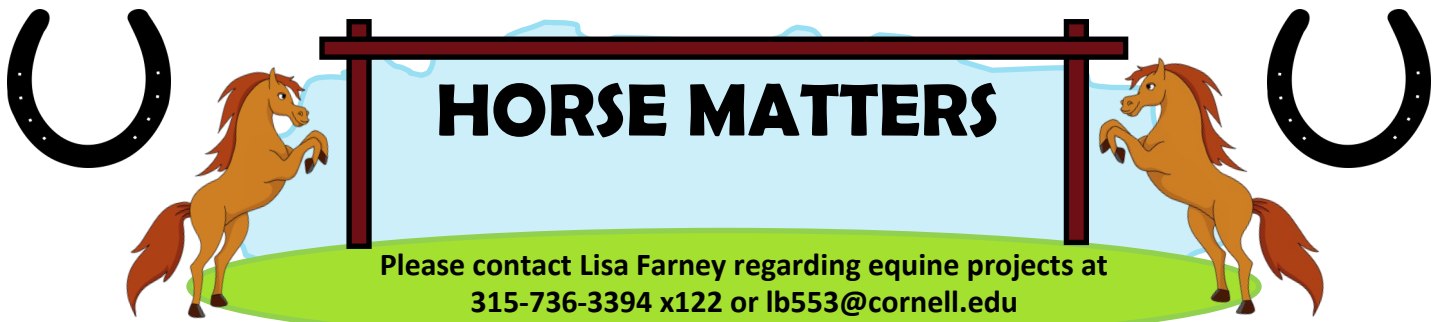
Sudoku is played on a grid of 9 x 9 spaces. Within the rows and columns are 9 “squares” (made up of 3 x 3 spaces). Each row, column and square (9 spaces each) needs to be filled out with the numbers 1-9, without repeating any numbers within the row, column or square.

After you have solved the puzzle grab your markers and color each square a different color. Use the code below.



- 1. RED 2. ORANGE 3. YELLOW
- 4. GREEN 5. BLUE 6. LT BLUE
- 7. PURPLE 8. WHITE 9. BLACK

8	2	7		1	5		4	3
3		1	2	4	9		7	6
			8				2	5
6						2		
	1	8	3	9				
				6	1		3	
	6	2			4	3		
1		5				4	8	
			9				1	



Horse Bowl & Hippology

Horse Bowl and Hippology provides an opportunity for youth to demonstrate their knowledge of equine related topics in a friendly and fair competitive setting.

Horse Bowl uses buzzers in a quiz bowl format that allows the youth to test their equine knowledge in a fun and exciting game.

Hippology uses a hands on format where youth visit different stations pertaining to the various areas of equine science such as tack/equipment, nutrition, anatomy and breeds/colors, etc.

Stay tuned for more details about 4-H Horse Camp scheduled for Saturday mornings in January and February. Come learn about horses, have fun and even stick around for a Arts and Crafts Project!

Horse Communications

- Multiple Dates in March/April

Horse Communications provide an opportunity for youth to practice and test their public speaking skills. 4-H youth choose their own topic, research and create their presentation in one of three communications categories (Individual Presentation, Team Presentation or Public Speaking).

HORSE CONTEST!

Try your hand at 4-H Horse Bowl Questions! Submit your answers to Lisa at LB553@cornell.edu, those that answer at least 7 questions correctly will be entered into a drawing for a prize! Answers must be received by October 31st to be entered in the drawing.

- 1) What is the term for a registered mark of identification that is typically located on the hip, neck, or cheek?
- 2) What part of the horse's mouth does the bit rest on ?
- 3) What breed of pony originated in Wales?
- 4) What is the horny growth located behind the fetlock called?
- 5) What breed of horse can be divided into trotters and pacers?
- 6) What type of medicine is used to treat infectious diseases caused by bacteria?
- 7) In reference to horse health, what do the initials "TPR" stand for? A: Temperature, pulse, and respiration
- 8) Name the breed of horse that is known for its colorful coat patterns and was developed by the Nez Perce Indians?
- 9) What part of a bridle or halter goes over the head of a horse?
- 10) When grooming a horse, what brush should you NOT use on the face and legs?

Hunt Seat Division

Macylinn Doxstader with Flashing Aditude- 1st place Jr. Showmanship, 3rd in Jr. Equitation on the Flat, 4th place in Jr. Hunter Under Saddle, 5th place in Hunt Seat Pleasure

Emily Clemons with A Sexy NY Review – 3rd place Sr. Showmanship, 5th in Sr. Hunter Under Saddle

Western Division

Abigail Douglas and Not Complicated – 1st in Sr. Horsemanship, 2nd in Senior Showmanship, 3rd in Sr. Road Hack, 3rd in Senior Western Pleasure, 5th in Sr. Stock Seat Equitation.

Macylinn Doxstader and Flashing Aditude- 1st in Jr. Showmanship, 2nd in Jr. Trail, 1st in Jr. Western Pleasure, 1st in Jr. Stock Seat Equitation, 3rd in Jr. Horsemanship

Emily Clemons with A Sexy NY Review - 5th in Senior Showmanship, 7th in Senior Ranch Pleasure, (Still awaiting other results....)

Miniature Horse Division

Colin Sullivan and River – 1st in Jr. Showmanship, 1st in Jr. Obstacle at Halter, 2nd in Jr. Costume, 3rd Gamblers Choice Obstacle, 5th in Jumper in Hand

Giuliana Colucci and Bodhi – 2nd in Jr. Showmanship, 2nd in Jr. Obstacle at Halter, 4th in Jr. Gambler’s Choice, 4th in Jr. Jumper in Hand, 4th in Jr. Costume

Driving Division

Addison Claudio with Poco finished 1st or 2nd in each of her classes

NYS 4-H Horse Judging and Hippology Contests

Our Sr. Team of Alyssa Buck, Lanelle Vile and Jacob Buck had a great time competing in the NYS 4-H Horse Judging and Hippology Contests!





State Fair Horse Pictures

4-H Club Financial Statement

Month		Year	
Club Leader		Club	
Income for the Month:			
(ex: Dues, Fundraisers,		\$	
Donations)		\$	
		\$	
		\$	
		\$	
		\$	
		\$	
		\$	
Total Income		(1) \$	
Expenses for the Month:			
(ex: Supplies, Fundraising,		\$	
Expenses)		\$	
		\$	
		\$	
		\$	
		\$	
		\$	
		\$	
Total Expenses		(2) \$	
Difference between Income (1) and Expenses (2)		(3) \$	
Beginning balance (according to bank statement)		(4) \$	
Ending balance (Add or subtract lines 3 & 4)		\$	
Balance must equal bank account.			
Club Treasurer		Date:	
Organizational Leader		Date:	

Secretary/Club Monthly Report to the Oneida County 4-H Office

This report should be filled out completely by the club secretary after the last club meeting of the month and mailed to the county 4-H office. Report may also be submitted by fax or e-mail.

MONTH OF _____ Date mailed _____

NAME OF CLUB _____ Leader _____

Meetings Held

Date of Meetings	Activity or Purpose of Meeting	Number of Members in Club	Members Present	Others Present

Story of 4-H club activities: such as parents' night, trips, special activities, committees, etc.:

Special request to 4-H office: (Permission to Raise Funds, Fundraiser Advertising, Etc.)

Attendance:

Balance in the treasury the last day of the month:

Meetings for the coming month:

Date	Time	Place

Signed:

4-H Club Secretary

Signed:

4-H Club Leader

ATTACH ANY MEETING PHOTOS

In Oneida County, the club program is our primary delivery method, but we also offer many county-wide, short-term programs, school-based, after-school, and special interest programs. Parents/Guardians who do not complete the full enrollment process (i.e. Background Check), should know that their child(ren) can participate in club meetings and events, but they themselves cannot.

Enrollment paperwork is a critical part of the 4-H program. It not only allows the 4-H office to keep accurate records of those involved in the programs we offer, but it also provides liability coverage.

Enclosed you will find all the required paperwork. Completed enrollment paperwork should be mailed to the 4-H Office at the address below.

Cornell Cooperative Extension Oneida County

Attn: Casey Holbert

121 Second Street

Oriskany, NY 13424

Please submit paperwork in a sealed envelope due to the confidential information contained within.

There is \$10 enrollment fee per an enrolled adult volunteer. This helps defray the cost of the mandatory background checks, motor vehicle records and insurance. Checks Payable: CCE Oneida

Youth and adults who are unable to pay the fee will not be prohibited from participating in the 4-H program. Please contact Lisa Farney, the 4-H Youth Development Team Leader to address this matter.



Oneida County Youth 4-H Member Enrollment Form 22-23



Member Information:

First Name:		Last Name:	
Gender: Male <input type="checkbox"/>	Female <input type="checkbox"/>	Not Listed <input type="checkbox"/>	
Date of Birth:		Grade:	
School Name:			

Family 4-H Account Information:

Family Email:	Primary Phone: ()
Mailing Address:	
City, State, Zip Code:	

Parent/Guardian 1 Information:

First Name:	Last Name:
Mobile Phone: ()	

Parent/Guardian 2 Information:

First Name:	Last Name:
Mobile Phone: ()	

Independent Member	OR	Club: _____
---------------------------	-----------	--------------------

Projects

Please check the box for what projects you plan on completing in the 2022-2023 4-H year:

Animal Science	Arts & Crafts	Archery	
Beef	Clothing and Textiles	Wood Science	
Cat	Combined Creative Science	Environmental	
Dairy	Consumer Economics	Entomology	
Dog	Food and Nutrition	Horticulture	
Goat	Healthy Lifestyles	Natural Resources	
Horse	Home Environment	Citizenship/Community Service	
Poultry	Performance Arts	Creative Communications	
Rabbit/Cavy	Photography	Leadership	
Sheep	Robotics	Public Presentations	
Swine	Tractor Safety	Other	
Vet Science	STEM	Bicycle	



Oneida County Youth 4-H Member Enrollment Form 22-23



Demographics:	
Ethnicity	Are you of Hispanic Ethnicity? <input type="checkbox"/> Yes <input type="checkbox"/> No <input type="checkbox"/> Prefer not to state
Race	<input type="checkbox"/> White <input type="checkbox"/> Black or African American <input type="checkbox"/> American Indian or Alaskan Native <input type="checkbox"/> Asian <input type="checkbox"/> Native Hawaiian or Pacific Islander <input type="checkbox"/> Prefer not to state
Residence	<input type="checkbox"/> Farm (Rural area where agricultural products are sold) <input type="checkbox"/> Town Under 10,000 & Rural– Non-Farm <input type="checkbox"/> Town, City or Suburbs 10,000 to 50,000 <input type="checkbox"/> City or Suburb More than 50,000 <input type="checkbox"/> City– Central, More than 50,000
Military	<input type="checkbox"/> No one in my family is serving in the military <input type="checkbox"/> I have a parent serving in the military <input type="checkbox"/> I have a sibling serving in the military
Branch	<input type="checkbox"/> Air Force <input type="checkbox"/> Army <input type="checkbox"/> Coast Guard <input type="checkbox"/> DOD Civilian <input type="checkbox"/> Marines <input type="checkbox"/> Navy <input type="checkbox"/> Active Duty <input type="checkbox"/> National Guard <input type="checkbox"/> Reserves

Once enrollment paperwork is complete, mail paperwork and payment to the 4-H Office.

Cornell Cooperative Extension Oneida County

Attn: Casey Holbert

121 Second Street

Oriskany, NY 13424

Enrollment Annual Member Fee: \$20 per Member with a maximum of \$40 per family. *

*(Family is defined as two or more Youth, Adults do not count).

Payment can be in check form . **Checks Payable:** CCE ONEIDA

Youth and adults who are unable to pay the fee will not be prohibited from participating in the 4-H program. Please contact Lisa Farney, the 4-H Youth Development Team Leader to address this matter.

This form must be completed to participate in 4-H clubs and related activities...

PART 1: YOUTH CODE OF CONDUCT

4-H members and volunteers participating in or attending club, county, regional, district, state and national programs, activities, events, shows and contests sponsored for youth by the 4-H Youth Development Program of Cornell Cooperative Extension Oneida County are required to conduct themselves according to the following Code of Conduct.

The following are not permitted at 4-H sponsored programs, activities or events:

- ◆ Clothing promoting alcohol and other intoxicants, or displaying messages that are racist, sexist, homophobic, or any other degrading message that detrimentally impacts the dignity and respect of members of our community are never acceptable.
- ◆ Revealing clothing such as short skirts or shorts, midriff-baring tops, and sagging pants. If you are unsure about what is appropriate, contact the local CCE 4-H Educator in charge in advance.
- ◆ Illegal acts: Do not possess or use illegal drugs, tobacco products, firearms, weapons, or any harmful object with the intent to hurt others at any time. (Firearms are allowed only as part of supervised 4-H Shooting Sports programming.) Do not attend CCE or 4-H activities under the influence of alcohol or controlled substances.
- ◆ Romantic displays and sexual activities either in public or private situations
- ◆ Boys in girls' dormitory or lodging areas and girls in boys' dormitory or lodging areas
- ◆ Cheating or misrepresenting project work
- ◆ Theft, destruction or abuse of property
- ◆ Violation of an established curfew
- ◆ Unauthorized absence from program site
- ◆ Insult or put down other participants. Harassment, bullying, and other exclusionary behavior aren't acceptable.
- ◆ Carelessly or intentionally harm youth or adults in any way (verbally, mentally, physically, or emotionally)
- ◆ Other conduct deemed inappropriate for the youth development program by Cornell Cooperative Extension Oneida County staff or a 4-H volunteer leader.

If this code is violated, the following steps may be taken:

- ◆ The adult chaperone for the youth involved in the violation (extension staff or 4-H leader) will be made aware of the situation
- ◆ The parent (s) may be called, and arrangements made for transportation home at the parent's expense
- ◆ The 4-H'er may be barred from participating in 4-H
- ◆ When a violation occurs at a competitive event, 4-H members may be disqualified from the contest and may be ineligible for any awards. Competition in later contest may also be barred
- ◆ If any laws are violated, the case may be referred to the police

PART 2: PARENTAL CONSENT/YOUTH ASSENT

Through participation in Cornell Cooperative Extension and 4-H programs, youth may be asked to complete a survey about their experiences in the program or activity. In the New York State 4-H Office at Cornell University, we regularly use data collected from these surveys for evaluation efforts designed to inform our programming and to provide better, more meaningful educational experiences in the future. Participation in the survey is anonymous, voluntary and there is no impact on program participation if someone refuses to complete a survey.

PART 3: PHOTO RELEASE

Please check **YES** or **NO** to the following: Cornell University is granted permission to use and/or publish my or my child's photograph or image (including: audio, film, digital image or any other media) for educational purposes on their respective websites or for the promotion of their respective programs. I understand that I/my child/ward are not being compensated in any way for the use of our images and that I/we do not have approval over the final product in which it appears. I hereby release Cornell Cooperative Extension, Cornell University, and all persons acting under their permission or authority from any and all claims or liability arising out of use of our images. This release shall bind our heirs, guardians, assigns, and legal representatives.

YES

NO

PART 4: ACKNOWLEDGEMENT OF RISK

I hereby apply for my child to participate in the 4-H club/activity indicated below to be conducted by the designated Cornell Cooperative Extension Association and acknowledge as follows:

- ◆ I fully understand and acknowledge that there are inherent risks and dangers in my child’s participation in the 4-H club and activities and my child’s participation in said 4-H club and all its activities and use of any equipment related to such activities may result in injury, illness or death and damage to personal property. I understand other participants, accidents, forces of nature or other causes may cause these risks and dangers and I hereby accept these risks and dangers.
- ◆ My child is in good health and is at or above the **minimum age of 5 for Cloverbud members** and **8 for regular members** required to participate in the is activity and is able to participate in any strenuous physical activity associated therewith.

CORNELL COOPERATIVE EXTENSION ONEIDA COUNTY 4-H Program Year:
October 1, 2022 thru September 30, 2023

All 4-H activities and events for program year

Cloverbud Members

Working with dogs

Cloverbud Activities

Physical Fitness Program

Cloverbud working with equine or other animal programs

Shooting Sports

4-H Club Activity (please select anticipated program participation):

4-H Equine (Horse) Activities

Participating in an equine club

Working with equines beyond club level including clinics, camps, shows

Working with equines in mounted activities. I (the parent/legal guardian) am aware that my child will be participating in 4-H Horse Program mounted “over fences” activities at Cornell University Cooperative Extension Oneida County, multiple county, regional or state sponsored events. I give my child permission to participate. Mounted “over fences” classes in the NYS 4-H Horse Program could include ground rail, cross rail and/or other over fences classes and obstacles (this does include trail class). The obstacles will be no higher than 3 foot in any of the 4-H activities.

I have read the above and by signing below I agree it is my intention to have my child participate in the indicated activity and I understand and accept the risks involved. This shall be binding on my heirs, successors, assigns, administrators and executors. Any claims or disputes arising out of my child’s participation in the activity shall be venued in the Supreme Court of the State of New York of the county where the County Extension office is located. I am at least twenty-one (21) years of age and I am the legal parent/guardian authorized to sign this document on behalf of the child name herein.

PART 5: SIGNATURES

With my signature, which I voluntarily affix to this document, I acknowledge that the information is accurate to the best of my knowledge and I have read and understand the terms of all releases, acknowledgments and agreements included in parts: #1. **Code of Conduct**; #2. **Parental Consent/Youth Assent**; #3. **Photo Release**; #4. **Acknowledgement of Risk** & #5. **Signatures**.

Active enrollment will not be acknowledged without signatures and dates completed below

Youth Name: _____
(Please Print Name)

Parent/Guardian Name: _____
(Please Print Name)

Parent/Guardian Signature: _____ Date: _____

Payment

Cash or Check or PayPal
(Check Payment Option)

Amount: _____

Check #: _____

NON-REFUNDABLE



Volunteer Information:

First Name:	Last Name:
Gender: Male <input type="checkbox"/> Female <input type="checkbox"/> Not Listed <input type="checkbox"/>	Date of Birth:

Family 4-H Account Information:

Family Email:	Primary Phone: ()
Mailing Address:	
City, State, Zip Code:	

Emergency Contact Information:

First Name:	Last Name:
Mobile Phone: ()	

Volunteer Type: Club Leader Project Volunteer Parent Volunteer Casual Volunteer

Independent **or** **Project/Activity or Club:** _____

Demographics:

Ethnicity	Are you of Hispanic Ethnicity? <input type="checkbox"/> Yes <input type="checkbox"/> No <input type="checkbox"/> Prefer not to state
Race	<input type="checkbox"/> White <input type="checkbox"/> Black or African American <input type="checkbox"/> American Indian or Alaskan Native <input type="checkbox"/> Asian <input type="checkbox"/> Native Hawaiian or Pacific Islander <input type="checkbox"/> Prefer not to state
Residence	<input type="checkbox"/> Farm (Rural area where agricultural products are sold) <input type="checkbox"/> Town Under 10,000 & Rural– Non-Farm <input type="checkbox"/> Town, City or Suburbs 10,000 to 50,000 <input type="checkbox"/> City or Suburb More than 50,000 <input type="checkbox"/> City– Central, More than 50,000
Military	<input type="checkbox"/> No one in my family is serving in the military <input type="checkbox"/> I have a spouse in the military <input type="checkbox"/> I am serving in the military <input type="checkbox"/> I have a son/daughter serving in the military <input type="checkbox"/> I have a sibling serving in the military <input type="checkbox"/> I have a parent serving in the military
Branch	<input type="checkbox"/> Air Force <input type="checkbox"/> Army <input type="checkbox"/> Coast Guard <input type="checkbox"/> DOD Civilian <input type="checkbox"/> Marines <input type="checkbox"/> Navy <input type="checkbox"/> Active Duty <input type="checkbox"/> National Guard <input type="checkbox"/> Reserves

MUST BE COMPLETED EVERY 3 YEARS
Background Screening Authorization/Consent for Volunteers

During the application process and at any time during the tenure of my volunteer service with Cornell Cooperative Extension Oneida County, I hereby authorize First Advantage Background Screening Corp. on behalf of Cornell Cooperative Extension Oneida County to procure a background history report which I understand may include information regarding my character, general reputation, or personal characteristics. The source of any investigative background report will be First Advantage Background Screening Corp. (First Advantage), P.O. Box 105292, Atlanta, GA 30348, 1-800-845-6004. This report may be compiled from one or more of the following with information from courts record repositories, departments of motor vehicles, past or present employers and educational institutions, governmental occupational licensing or registration entities, business or personal references provided by me, and any other source required to verify information that I have voluntarily supplied. I understand that I may request a complete and accurate disclosure of the nature and scope of the background verification.

Social Security Number (**Required**)

Date of Birth (Month, Day, Year)

Applicant/Employee Printed Name

Applicant/Employee Signature

Street Address (**No PO Box**)

City, State, Zip Code

Phone

Date

Background Verification Disclosure

This is used to inform you that a background investigative report is being obtained from a consumer reporting agency for the purpose of evaluating you for volunteer service, including retention as a volunteer. Summary of Your Rights Under the Fair Credit Reporting Act (FCRA) can be reviewed at: http://staff.cce.cornell.edu/human_resources/Documents/FCRA%20Summary%20of%20your%20right.pdf. Cornell Cooperative Extension Oneida County will not be requesting, and will not consider, any consumer financial credit reports. First Advantage Privacy Policy can be reviewed at: www.fadv.com/privacy-policy/

Cornell Cooperative Extension Oneida County Confidentiality Promise

To ensure confidentiality of applicant information, CCEOC's policy requires the following:

- Information collected from applicants is kept in a locked, secured file cabinet.
- The application and screening information is kept on file for a minimum of three years following receipt of the application or termination of involvement as a volunteer with CCEOC, whichever is longer; and release of any information is done only in accordance with NYS law.
- All applicants will be re-screened every three years in order to keep their volunteer status. This authorization is good until revoked in writing by volunteer.

Cornell Cooperative Extension is an employer and educator recognized for valuing AA/EEO, Protected Veterans, and Individuals with Disabilities and provides equal program and employment opportunities.

This form must be completed to participate in 4-H clubs and related activities...

PART 1: VOLUNTEER CODE OF CONDUCT

- ◆ Cornell Cooperative Extension (CCE) Volunteers are required to accept and adhere to the following standards of behavior when engaged in assigned volunteer activities.
- ◆ Respect and adhere to CCE rules, policies and guidelines that relate to volunteer activity and the program I serve
- ◆ Execute CCE business in an ethical manner
- ◆ Preserve the confidentiality of information (and sign confidentiality agreement if required by my volunteer role) about program participants and CCE internal affairs that have been entrusted to me as affirmed by my signature on the Volunteer Confidentiality Agreement
- ◆ Refrain from using my CCE volunteer status for personal or business financial gain
- ◆ Fulfill my assigned volunteer duties, including completion of required records or reports, in a timely manner
- ◆ Use my time wisely and work cooperatively with Extension staff and other volunteers
- ◆ Participate in required training programs and use the recommended policies and procedures
- ◆ Accept supervision and support from professional Extension staff and/or supervisory volunteers
- ◆ Respect and uphold the rights and dignity of all staff, other volunteers, and all individuals who participate in CCE programs recognizing that people's values, beliefs, customs, and strengths differ
- ◆ Encourage participation of and respect for individuals of diverse backgrounds, cultures, and perspectives
- ◆ Refrain from the use of alcohol, tobacco and inappropriate language during all 4-H club meetings events and activities
- ◆ Commit no illegal or abusive act
- ◆ Report all unsafe conditions and accidents to professional Extension staff as soon as possible
- ◆ Dress in a manner that reflects a positive image of 4-H and CCE of Oneida County

PART 2: VOLUNTEER AGREEMENT

- ◆ I agree that as a CCE volunteer my participation in the activities outlined in the attached volunteer position description is without monetary or other compensation. **That document, including the Code of Conduct it contains, shall be considered a part of this agreement.**
- ◆ I understand that CCE shall have the right to suspend or release me as a volunteer at any time and for any reason, within the discretion of CCE. I also understand that I have the right to terminate this agreement, recognizing that if I receive significant training for the volunteer position that there is an expectation of volunteer service.
- ◆ I understand that CCE does not provide volunteers with medical insurance; therefore CCE is not responsible for any medical expenses incurred by me. Further, I understand that I am neither covered by Worker's Compensation nor entitled to employee benefits as a result of my CCE volunteer affiliation.
- ◆ CCE will cover me as a volunteer under the CCE commercial general liability to protect me against any covered claims for injury to persons or damage to property arising out of my activities as a volunteer. In exchange for volunteer liability insurance protection I, on behalf of myself, my heirs and my representatives, do hereby release Cornell Cooperative Extension and the Association, its officers, directors, employees, and other volunteers from any liability whatsoever for any injury to myself, including death, or damage to my property that arises out of or is in any way related to my volunteer activities unless my injury is the result of the sole negligence of Cornell Cooperative Extension or the Association. I understand that the liability insurance coverage only applies when I am on duty, acting in accordance with CCE guidelines for my volunteer assignment, and all other applicable pre-conditions for coverage under the CCE insurance policy are met.
- ◆ CCE agrees to provide the orientation, training, supervision, and support deemed necessary by CCE for the successful fulfillment of my volunteer responsibilities.
- ◆ I am aware of the terms and conditions of this agreement and agree that the provisions of this agreement do not constitute a contract, either expressed or implied, for employment between CCE and myself.
- ◆ This agreement is valid until it is terminated by CCE or by me.

PART 3: PHOTO RELEASE

Please check **YES** or **NO** to the following: Cornell University is granted permission to use and/or publish my or my child's photograph or image (including: audio, film, digital image or any other media) for educational purposes on their respective websites or for the promotion of their respective programs. I understand that I/my child/ward are not being compensated in any way for the use of our images and that I/we do not have approval over the final product in which it appears. I hereby release Cornell Cooperative Extension, Cornell University, and all persons acting under their permission or authority from any and all claims or liability arising out of use of our images. This release shall bind our heirs, guardians, assigns, and legal representatives.

YES

NO

PART 4: ACKNOWLEDGEMENT OF RISK, WAIVER & RELEASE

I, _____ the undersigned hereby apply to participate in the program described below to be conducted in cooperation with Cornell Cooperative Extension Association of Oneida County and I acknowledge as follows:

I fully understand and acknowledge that there are inherent risks and dangers in my participation in the above activities and my participation in said activities and use of any equipment or materials related to such activities may result in my injury, illness or death and damage to or loss of my personal property. I understand other participants, accidents, forces of nature or other causes may cause these risk and dangers and I hereby fully acknowledge and accept these risk and dangers.

I am in good health and **I am at or above the minimum age of 18** required to participate in this activity and I am able to participate in any strenuous physical activity associated therewith.

I herewith release, forever discharge and waive any right of recovery or subrogation against Cornell Cooperative Extension, its officers, directors, employees and volunteers from any and all liability whatsoever for any illness or injury, including death or damage to or loss of my personal property that I may sustain while I am participating in this program. This shall be binding on my heirs, successors, assigns, administrators and executors. Any claims or disputes arising out of my participation in the activity shall first be submitted to arbitration and/or be venued in the Supreme Court of the State of New York of the sponsoring County Association, the choice of which shall be at the sole discretion of CCE.

PART 5: SIGNATURES

With my signature, which I voluntarily affix to this document, I acknowledge that the information is accurate to the best of my knowledge and I have read and understand the terms of all releases, acknowledgments and agreements included in parts: #1. **Code of Conduct**; #2. **Volunteer Agreement**; #3. **Photo Release**; #4. **Acknowledgement of Risk** & #5. **Signatures**.

Active enrollment will not be acknowledged without signature and date completed below

Volunteer Signature: _____ **Date:** _____

FOR NEW VOLUNTEERS ONLY - If you have NOT had a CCE Reference Check completed,

Please Provide Contact Information for Two References or Complete Ref. Forms in back of Packet

Reference #1: Name: _____

Phone #: _____ Email: _____

Reference #2: Name: _____

Phone #: _____ Email: _____

As a **4-H Volunteer** I understand I am **REQUIRED** to:

_____ Provide 2 Reference Check Contact Information (Once)

_____ Complete my Annual Sexual Harassment Training (Yearly)

Link will be emailed as application is processed.

Payment

Cash Check PayPal

Check #: _____

Amount: _____

ENROLLMENT FEE is \$10 NON-REFUNDABLE

(Please complete ONLY if you will be driving youth other than your own)

Motor Vehicle Record Request Permission Form

_____ I will ONLY be driving my OWN youth. (Form NOT Needed)

_____ I will be driving OTHER youth than my own. (Complete Form)

I, the undersigned, give authorization for P. W. Wood and Son, Inc. and Cornell Cooperative Extension to obtain a current copy of my Motor Vehicle Driving Record (MVR). I state that I currently hold a valid Motor Vehicle Driver's license as indicated below and all information is correct. This authorization is good until revoked by me in writing. This information will only be used to verify my Motor Vehicle Driving Record.

Please check one:

_____ Employee Consideration (IF HIRED: Please inform The Wood Office)

_____ Current Employee

_____ Volunteer

Name as it Appears on License: _____

Address: _____

Date of Birth: _____ State of License: _____

Driver's License Number: _____

Date: _____ Signature: _____

A photo copy of your valid driver's license must accompany this form

Form to be Returned to Undersigned

CCE Authorization Signature: _____

Print Name: _____

Email Address (for results): _____

Information Boards Needed for the Boonville Fair!

At the NY State Fair the Dog Program had a very fun interactive/educational booth. It consisted of simple display boards with question and answer cards. (see examples at the right) Looking for Clubs or 4-H members that could put together a display that could be used at the Boonville Fair. This could easily be applied to other species of animals.

1. Comb and wattle. 2. 99.5-100F
3. Snood 4. 26-35 days

1. THE FLAP OF SKIN ON TOP OF A ROOSTERS HEAD IS CALLED A



AND THE FLAP UNDER THE BEAK IS CALLED A ___?

LIFT FOR ANSWER



2. AN INCUBATOR SHOULD BE SET AT WHAT TEMPERATURE?

LIFT FOR ANSWER

3. THE FLAP OF SKIN THAT HANGS OVER THE BEAK OF A TURKEY IS



DUCK EGGS TAKE _____ NUMBER OF DAYS TO HATCH.

LIFT FOR ANSWER

LIFT FOR ANSWER

Cornell Cooperative Extension
Oneida County
121 Second Street
Oriskany, NY 13424

PERIODICALS
POSTAGE PAID AT
ORISKANY, NY 13424-9799

"Cornell Cooperative Extension is an employer and educator recognized for valuing AA/EEO, Protected Veterans, and Individuals with Disabilities and provides equal program and employment opportunities"