

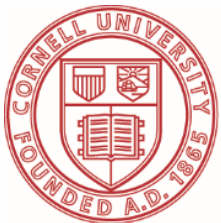
# **CCE NASSAU 108<sup>TH</sup> ANNUAL MEETING**

---

**David Rolnick, Board President  
Gregory Sandor, Executive Dir.**

---

**December 5, 2022**



**Cornell University**  
**Cooperative Extension**  
**Nassau County**

# 108<sup>th</sup> Annual Meeting Agenda

- 6:30pm**      **Call to Order - David Rolnick, Board President**  
- Pledge of Allegiance and Welcome  
- Introduction of Guests, Board Members & Staff
- 6:45pm**      **Executive Director Report- Gregory Sandor, Exec. Dir.**  
- 2022 Highlights
- 7:00pm**      **Keynote Speakers**  
- Covanta – Edward Sandkuhl and Maureen Early
- 7:40pm**      **Old Business**  
- Approve 2021 Annual Meeting Minutes
- 7:45pm**      **New Business**  
Present & Approve Slate of Nominees for 3-year Board Terms (2023-2025)  
- Charles Kemnitzer  
- Larry Rubinstein  
- Patricia Valente (2<sup>nd</sup> Term- 2023-2025)
- 8:00pm**      **Adjourn**



**Cornell University**  
Cooperative Extension  
Nassau County

# Thank You Board of Directors!!!

A special thank you to our Board.  
What an amazing group of volunteers you are!

Thanks for your service, dedication and for all the hard  
work behind the scenes...





# Thank you Master Gardeners & other Volunteers!





# Thank You to our CCE Nassau Team!!







# Cornell Cooperative Extension





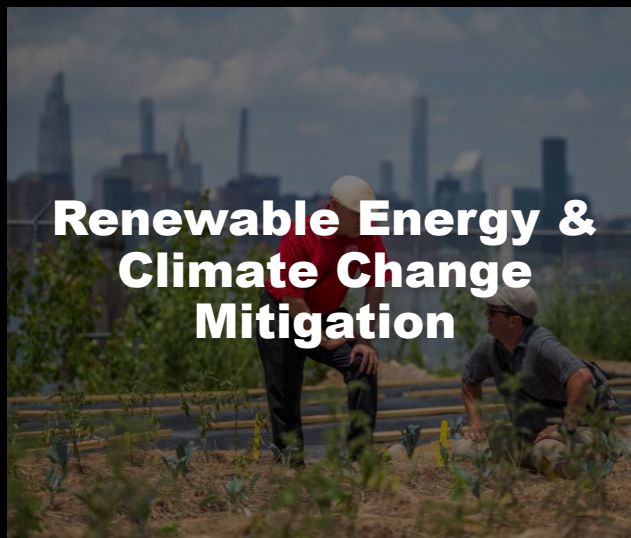
**CCE is a dynamic education system connecting Cornell University's world-class research with county-based offices & educators across the state. With a presence in every county and all five boroughs of New York City, CCE is uniquely positioned to meet the diverse needs of communities across the state.**

**Cornell Cooperative Extension**





**Sustainable Food  
Systems- Nutrition &  
Food Security**



**Renewable Energy &  
Climate Change  
Mitigation**



**Community &  
Economic Vitality**



**Workforce  
Development**



**4-H Youth  
Development**



**Agriculture/  
Horticulture-  
Supply/Distribution  
Chain**

# CCE NASSAU PROGRAM AREAS

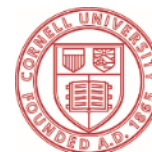
I. Nat. Resources / Renewable Energy / Urban Forestry / Marine

II. Commercial & Residential Horticulture/ MGV Program / EMF

III. Food, Nutrition & Wellness

IV. Food Systems / Taste NY

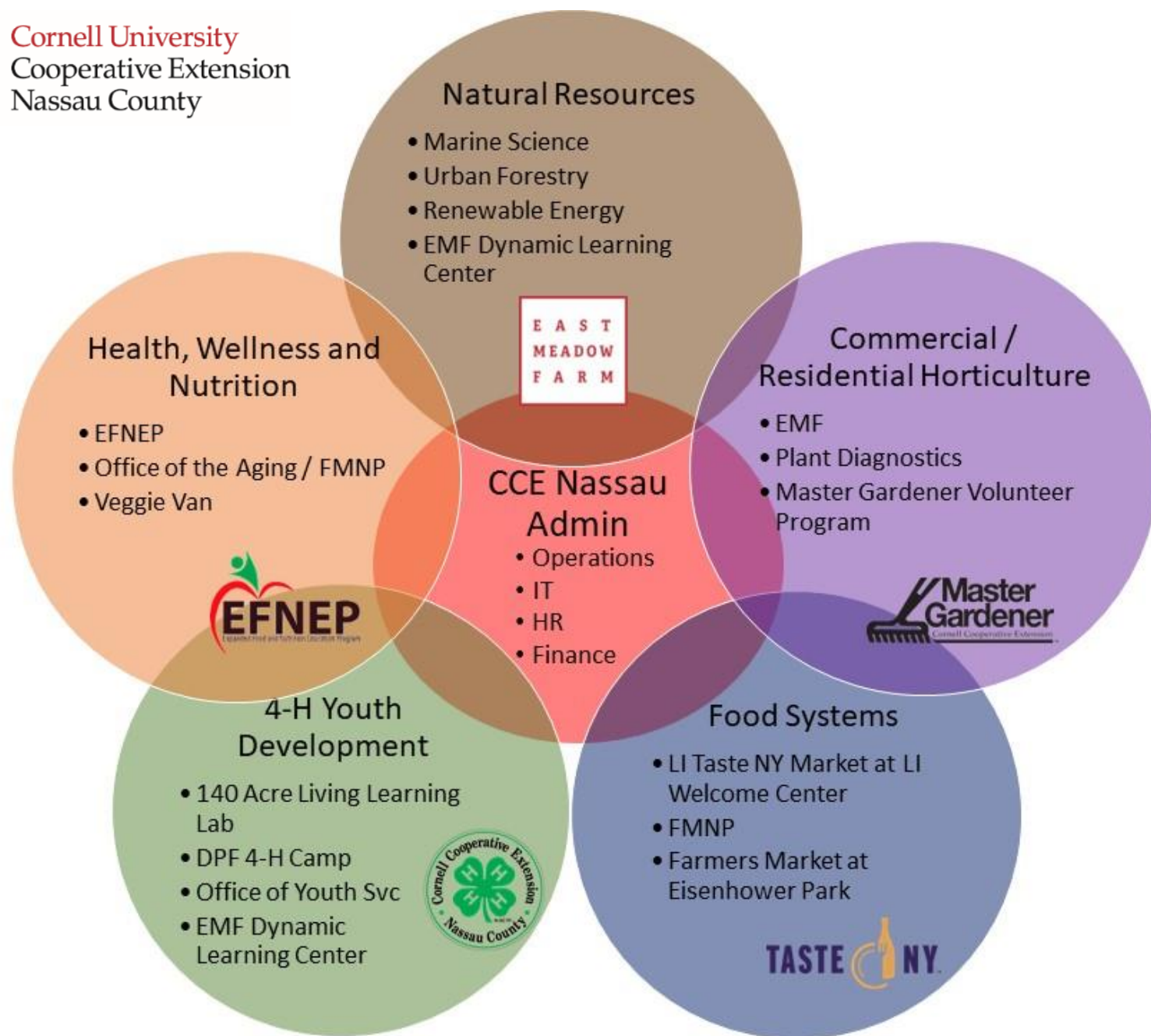
V. 4-H Youth Development / 140 Acre LLL/ Camp



Cornell University  
Cooperative Extension  
Nassau County



**Cornell University**  
Cooperative Extension  
Nassau County





# Administration Team



Jane Kraus, Operations Manager



Erika Hulver



Tracy Jolly



Man Nga  
Chan



Dawn Avento



Kia Olsson



Andrea Savoretti

# 2022 CCE Nassau

## “Big Picture” Accomplishments

- Expanded presence @ HQ's at Eisenhower Park
- Substantial Donation to CCE Nassau from Covanta
- Approval of new East Meadow Farm ***Dynamic Learning Center*** by Nassau County Open Space Comm. and Planning Department
- NYSERDA LI Clean Energy Hub program/grant
- Successful 4-H Camp Season (see #'s )
- Expansion at Taste NY Market & “buy local” campaign
- Successful Farmers Market at Eisenhower Park and 4-H Entrepreneurship Program & Stand at East Meadow Farm



Cornell University  
Cooperative Extension  
Nassau County

# Continue to establish ourselves at Eisenhower Park & East Meadow Farm

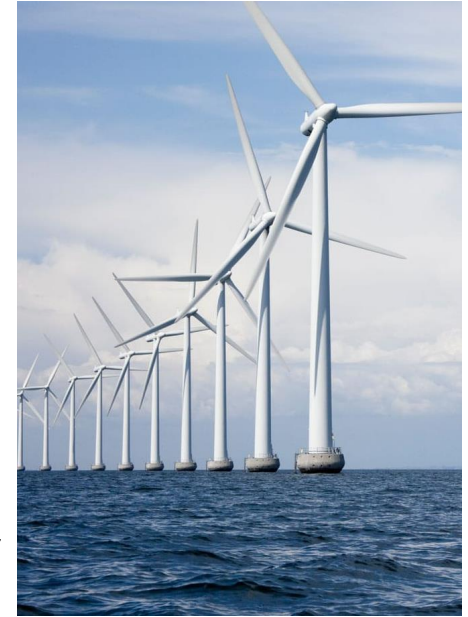


E A S T  
M E A D O W  
F A R M



# CCE Nassau– Key Themes of our Programs

- \* Continue to build upon link to Cornell University
- \* High quality / world class programming
- \* Creative/dynamic/progressive projects, programs & classes
- \* “Hands on” Education/ relevant-get out into communities
- \* Responding to needs in the community--- listen....
- \* Entrepreneurial thread thru all work- sustainability
- \* Fiscal Stability - paid programs, economic/community vitality



Cornell University  
Cooperative Extension  
Nassau County

## On-going support & Donation from Covanta Energy

# COVANTA

Powering Today. Protecting Tomorrow.





# EMF *Dynamic Learning Center* – 2023 Proposed New Building

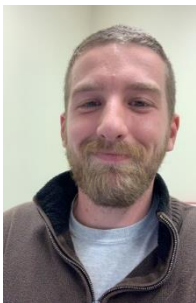


E A S T  
M E A D O W  
F A R M





# Horticulture & Natural Resource Program Team



Michael Fiorentino  
Natural Resource Program Manager



Vincent Drzewucki  
Horticulture / Urban Forestry  
Educator



Beth Ricciardi  
4-H / Environmental Science Educator



Daniel Holmes  
EMF Facilities Coordinator



Jennifer Hochuli  
Master Gardener Volunteer Liaison



Christina McLaughlin  
Natural Resource Educator

E A S T  
M E A D O W  
F A R M

# Urban and Community Forestry



Department of  
Environmental  
Conservation



E A S T  
M E A D O W  
F A R M

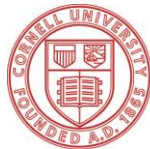
# Marine Science



JONES BEACH  
ENERGY & NATURE  
CENTER



Parks, Recreation  
and Historic Preservation



Cornell University  
Cooperative Extension  
Nassau County



E A S T  
M E A D O W  
F A R M



# Garden-Based Learning & Horticulture



EAST  
MEADOW  
FARM

# Renewable Energy Program



E A S T  
M E A D O W  
F A R M

# Master Gardener Program



- Emphasizing More Education in the Gardens at EMF
- Work in the Community: Seed to Supper Program, Gardening Presentations, Collaborations with Baldwin Schools, and more
- **Completion of the 2022 Master Gardener Class!**



E A S T  
M E A D O W  
F A R M



# CCE Nassau Farmers Markets

*is dedicated to fulfilling the CCE-NC mission by bringing awareness to the benefits eating farm-fresh produce and supporting local businesses can have on one's health and well-being, as well as the community.*

- At Eisenhower Park and E. Meadow Farm
- 12 regular vendors, including 2 farm stands. 20 vendors attended throughout the season
- Close to 400 customers on average visited each week



**"I love your product! I get your soups in Whole Foods all the time!"**

*~ A market customer to vendor, Something Good to Eat*



**Cornell University**  
Cooperative Extension  
Nassau County

# Nutrition, Health, & Wellness Team



Nicole Borukhov



Tiffany Bryant-Fulton



Eugenia Cuadra



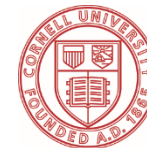
Beth Labelson



Paul Murillo



Khy Ee Siew

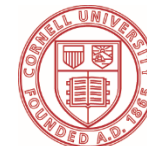


Cornell University  
Cooperative Extension  
Nassau County



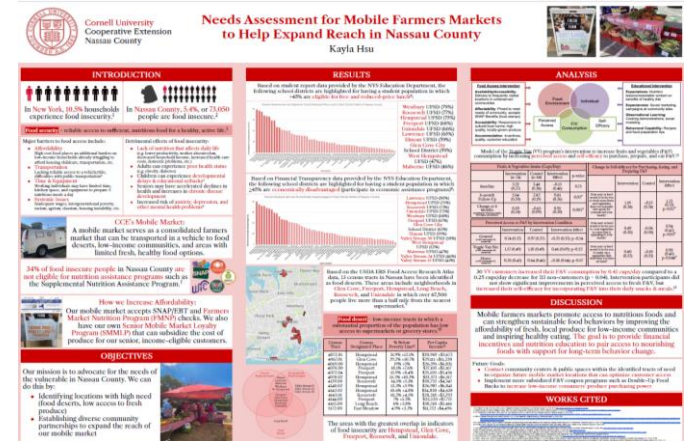
# 2022 Highlights

- ▶ EFNEP
- ▶ Nutrition & Health Promotion programs with the Nassau County Office for the Aging
- ▶ Mobile Markets
  - ▶ Veggie Van Study
  - ▶ SNAP-Ed Community Growers Grant
- ▶ Community programs at EMF & local partnering agencies
- ▶ CALS Intern – Kayla Hsu



Cornell University  
Cooperative Extension  
Nassau County



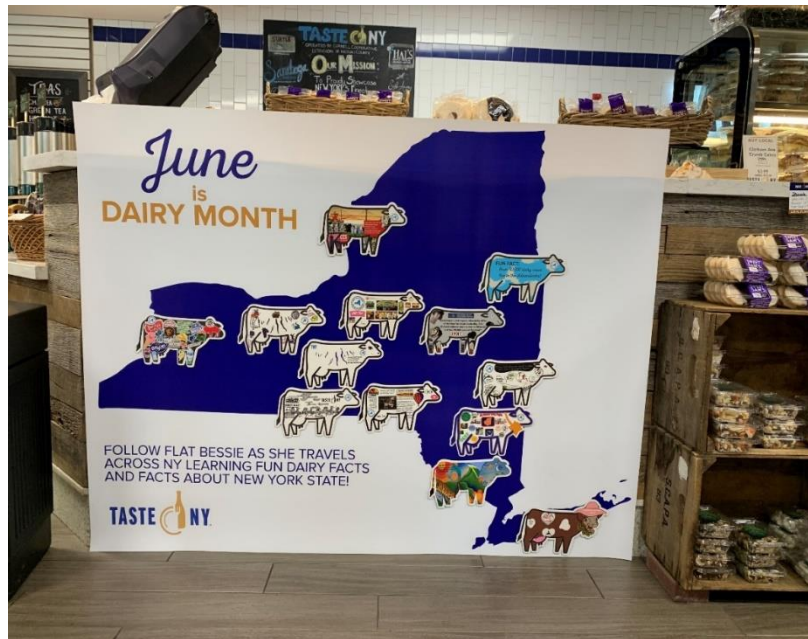








# Sustainable Food Systems / Taste NY











# New Vendors

38 New Vendors October 2021 thru October 2022 (over 250 total Taste NY Vendors)

## Some examples:

- NYS Dairy Products/ Ice Cream
- Gluten Free items
- Candles/Aromatherapy
- Baked Goods
- Soaps/lotions
- Mushroom Chips/Granola/Fruit Snacks
- Hand Sewn items, wood cutting boards
- Creamed Honey
- Pasta Sauce/ Salsas/Jams/Jellies/BBQ Sauce



# Looking Forward --Taste NY

- Expand our CCE Nassau Food Systems work; integrate Taste NY more with other program areas
- Recruitment of new Taste NY Vendors/ strengthen collaboration w/existing
- Increase work with local commercial kitchens
- Increase work with local educational institutions
- Continue to promote/support “buy local” food movement—spurring on Economic Development
- Partnering with other Taste NY locations statewide (CCE)
- Collaborate w/supply chain and distribution chain partners on LI





# 4-H Youth Development



- EMF Field trips
  - Day trips for youth organizations
  - Established itineraries



- Youth volunteers assist in children's garden
  - Friday mornings reserved for youth volunteers this summer
  - Assisted cut flower committee in preparing flowers for 4-H Farm Stand



# Jones Beach Marine Camp



- In partnership with NY Sea Grant, 4-H conducted a successful and engaging series of field trips for Long Island Youth
- Total of 6 groups attended, 100+ children attended within Nassau
- Set the ground work for future collaboration with local youth agencies





# 4-H Entrepreneur Program & Farmstand



- ▶ Plans to further develop Program including weekly classes and curriculum
- ▶ Youth volunteers worked to help run farm stand at EMF
- ▶ Collaboration with Master Gardener Volunteers for mentorship and engagement
- ▶ Establishment of consistent 4-H youth members and expanding programming in 2023





# 4-H Community and School Programs



- Baldwin Schools Community Gardens
- Hempstead Hispanic Counseling Center
  - Afterschool programs
- Hispanic Brotherhood of Rockville Center
  - Afterschool programs
- Dairy in the classroom education program
  - NYS Dairy Education grant for youth within Nassau county grades 2-5



# 4-H Camp/ 4-H LLL





# Camper Weeks



***Day Camp Expanded by 44% !***

Day Camp Week 1	18
Day Camp Week 2	20
Day Camp Week 3	22
Day Camp Week 4	30
Day Camp Week 5	31
Day Camp Week 6	33
Day Camp Week 7	35
Day Camp Week 8	35
<b>Day Camp Total Enrollment</b>	<b>224</b>
Sleep Away Camp Week 1	52
Sleep Away Camp Week 2	53
Sleep Away Camp Week 3	66
Sleep Away Camp Week 4	73
Sleep Away Camp Week 5	75
Sleep Away Camp Week 6	73
Sleep Away Camp Week 7	73
Sleep Away Camp Week 8	78
<b>Sleep Away Camp Total Enrollment</b>	<b>543</b>
<b>Total Camper Weeks</b>	<b>767</b>



# 4-H Camp Farm

## Education and Production



Cornell University  
Cooperative Extension  
Nassau County



# 140 acre LLL Facilities & Rentals



- Continue to have rental groups while expanding the number of options available for housing/activities & family camping
- Successful year renting Cliff House on Air B N B
- Brought electric back to “Soundview” building and one of our bathhouses on the east side
- Set up a tenting camp area ready to use for the 2023 spring/summer season
- Around \$30,000 spent on capital improvements for buildings on site
- Expanded rentals planned for 2023



# Looking Forward -2023 4-H Camp Season!



## Implementation

- We are actively hiring for the 2023 camping season! We have staff already onboarded and excited for camp.
- We opened registration 3 months early with updated literature in our new Family Handbook!
- We are implementing a new schedule, and offering program tracks this season
- Expanding the number of spots available for day camp with designated staff
- Visit our website to see updates for next camp season:  
<https://ccenassau.org/dpf-4-h-camp>





# CCE Nassau Looking ahead- 2023

- “Road to 2025” Strategic Plan (Fund Development & Marketing Plan)
- Expand Taste NY and Food Systems Programming.
- Expansion of Nutrition, Health & Wellness & Programming
- Renewable Energy/NYSERDA
- EMF–Dynamic Learning Center
- Expand MGV Program
- 4-H Expansion/ Entrepreneurship
- 4-H Camp transitioning to 140 acre Living Learning Laboratory



# Annual Meeting Keynote Speakers

# COVANTA

Powering Today. Protecting Tomorrow.

E A S T  
M E A D O W  
F A R M





# Approve 2021 Annual Meeting Minutes

- Everyone should have a copy of 2021 Annual Mtg. minutes in packet.
- Please review
- Motion to approve?



Cornell University  
Cooperative Extension  
Nassau County

# Slate of Nominees – 1<sup>st</sup> Term (2023- 2025)

## **Charles Kemnitzer (See Handout)**

Prior to retirement, Charlie was a high school Social Studies teacher in the Levittown School District for 32 years, where he also served as the President of the Levittown Teachers' Union for 11 years. Charlie received his Bachelor's and Masters' Degrees in History and Social Sciences from the State University of New York at Albany.

He has been gardening for over 60 years and was a founding member of the ground-breaking Huntington Town Organic Gardening Program and the Nassau County 4-H Community Garden Program in the 1970's.

Charlie is a graduate of the MGV class of 2016. He has served on the Vegetable, Compost, Arboretum and Presentation Committees. He welcomes the opportunity to serve on the Board of CCE Nassau and looks forward to furthering CCE Nassau's mission to assist and educate the Nassau County community, both at EMF and beyond.

## **Larry Rubinstein (See Handout)**

Larry Rubinstein is a resident of Nassau County who has been an advocate for residents. He was a camper and counselor for many years at the Dorothy P. Flint 4-H Camp. He currently serves as the Vice Chairman of the Long Island Rail Road Commuter Council to the MTA. He works for Metrovision Productions as an Engineer in Charge of Television Productions. He is responsible for running television mobile units for live and taped productions all over the country, which include satellite operation and transmission. Larry brings a lot of passion and enthusiasm to the board.



# Slate of Nominees – 2nd Term (2023- 2025)

## Patricia Valente (See Handout)

After a successful career in strategic planning and analysis at a major utility, Pat turned her talents to volunteering and supporting green space projects in her community. She became a Master Gardener in 2017 and her CCE-Nassau intern project resulted in the installation of a native plant garden in a local preserve. As President of Native Greenway Corp, a local charity, she continued her work in the preserve by installing a grove of native trees and working with her community to become a Tree City. She is on the Board of Directors of the Science Museum of Long Island and continues to work with other local groups and politicians on projects that promote environment responsibility and green spaces.



Cornell University  
Cooperative Extension  
Nassau County



Cornell University  
Cooperative Extension  
Nassau County



Thank you for attending our 108<sup>th</sup>  
Annual Meeting!!  
Happy Holidays...