

Greetings From...

CCE YATES COUNTY

Penn Yan, New York

2021 Annual Report



CAUTION
WATER LEVEL
MAY RISE
RAPIDLY

NO
SWIMMING
OR
BOATING

*Photo Credit: Tina Fenton
Penn Yan, New York*

2022

January '22

Su	M	Tu	W	Th	F	Sa
						1
2	3	4	5	6	7	8
9	10	11	12	13	14	15
16	17	18	19	20	21	22
23	24	25	26	27	28	29
30	31					

April '22

Su	M	Tu	W	Th	F	Sa
					1	2
3	4	5	6	7	8	9
10	11	12	13	14	15	16
17	18	19	20	21	22	23
24	25	26	27	28	29	30

July '22

Su	M	Tu	W	Th	F	Sa
					1	2
3	4	5	6	7	8	9
10	11	12	13	14	15	16
17	18	19	20	21	22	23
24	25	26	27	28	29	30
31						

October '22

Su	M	Tu	W	Th	F	Sa
						1
2	3	4	5	6	7	8
9	10	11	12	13	14	15
16	17	18	19	20	21	22
23	24	25	26	27	28	29
30	31					

February '22

Su	M	Tu	W	Th	F	Sa
		1	2	3	4	5
6	7	8	9	10	11	12
13	14	15	16	17	18	19
20	21	22	23	24	25	26
27	28					

May '22

Su	M	Tu	W	Th	F	Sa
1	2	3	4	5	6	7
8	9	10	11	12	13	14
15	16	17	18	19	20	21
22	23	24	25	26	27	28
29	30	31				

August '22

Su	M	Tu	W	Th	F	Sa
	1	2	3	4	5	6
7	8	9	10	11	12	13
14	15	16	17	18	19	20
21	22	23	24	25	26	27
28	29	30	31			

November '22

Su	M	Tu	W	Th	F	Sa
		1	2	3	4	5
6	7	8	9	10	11	12
13	14	15	16	17	18	19
20	21	22	23	24	25	26
27	28	29	30			

March '22

Su	M	Tu	W	Th	F	Sa
		1	2	3	4	5
6	7	8	9	10	11	12
13	14	15	16	17	18	19
20	21	22	23	24	25	26
27	28	29	30	31		

June '22

Su	M	Tu	W	Th	F	Sa
			1	2	3	4
5	6	7	8	9	10	11
12	13	14	15	16	17	18
19	20	21	22	23	24	25
26	27	28	29	30		

September '22

Su	M	Tu	W	Th	F	Sa
				1	2	3
4	5	6	7	8	9	10
11	12	13	14	15	16	17
18	19	20	21	22	23	24
25	26	27	28	29	30	

December '22

Su	M	Tu	W	Th	F	Sa
				1	2	3
4	5	6	7	8	9	10
11	12	13	14	15	16	17
18	19	20	21	22	23	24
25	26	27	28	29	30	31

2023

January '23

Su	M	Tu	W	Th	F	Sa
1	2	3	4	5	6	7
8	9	10	11	12	13	14
15	16	17	18	19	20	21
22	23	24	25	26	27	28
29	30	31				

April '23

Su	M	Tu	W	Th	F	Sa
						1
2	3	4	5	6	7	8
9	10	11	12	13	14	15
16	17	18	19	20	21	22
23	24	25	26	27	28	29
30						

July '23

Su	M	Tu	W	Th	F	Sa
						1
2	3	4	5	6	7	8
9	10	11	12	13	14	15
16	17	18	19	20	21	22
23	24	25	26	27	28	29
30	31					

October '23

Su	M	Tu	W	Th	F	Sa
1	2	3	4	5	6	7
8	9	10	11	12	13	14
15	16	17	18	19	20	21
22	23	24	25	26	27	28
29	30	31				

February '23

Su	M	Tu	W	Th	F	Sa
			1	2	3	4
5	6	7	8	9	10	11
12	13	14	15	16	17	18
19	20	21	22	23	24	25
26	27	28				

May '23

Su	M	Tu	W	Th	F	Sa
	1	2	3	4	5	6
7	8	9	10	11	12	13
14	15	16	17	18	19	20
21	22	23	24	25	26	27
28	29	30	31			

August '23

Su	M	Tu	W	Th	F	Sa
		1	2	3	4	5
6	7	8	9	10	11	12
13	14	15	16	17	18	19
20	21	22	23	24	25	26
27	28	29	30	31		

November '23

Su	M	Tu	W	Th	F	Sa
			1	2	3	4
5	6	7	8	9	10	11
12	13	14	15	16	17	18
19	20	21	22	23	24	25
26	27	28	29	30		

March '23

Su	M	Tu	W	Th	F	Sa
			1	2	3	4
5	6	7	8	9	10	11
12	13	14	15	16	17	18
19	20	21	22	23	24	25
26	27	28	29	30	31	

June '23

Su	M	Tu	W	Th	F	Sa
				1	2	3
4	5	6	7	8	9	10
11	12	13	14	15	16	17
18	19	20	21	22	23	24
25	26	27	28	29	30	

September '23

Su	M	Tu	W	Th	F	Sa
					1	2
3	4	5	6	7	8	9
10	11	12	13	14	15	16
17	18	19	20	21	22	23
24	25	26	27	28	29	30

December '23

Su	M	Tu	W	Th	F	Sa
					1	2
3	4	5	6	7	8	9
10	11	12	13	14	15	16
17	18	19	20	21	22	23
24	25	26	27	28	29	30
31						

President's Address



On behalf of the Board of Directors, we are pleased to present the Annual Report for 2021. The Board of Directors is extremely grateful to Cornell Cooperative Extension's educators, staff, and volunteers for their continued dedication to delivering educational programs to our community.

While this year was not the “back-to-normal” that we had hoped it would be, one aspect of which I am especially

proud of is the continued efforts of CCE-Yates County to deliver educational programming both virtually and in person. From the Finger Lakes Grape Program hosting “hybrid” tailgate meetings, safely hosting in-person private pesticide applicator training, and the Yates County 4-H Club offering social-distanced in-person programming, CCE-Yates County has continued its mission of putting knowledge to work in pursuit of economic vitality, ecological sustainability, and social well-being.

While 2020 was a test of strength and adaptability, 2021 was a test of resilience and patience. The Board faced several challenges, in large part because we were (and still are) working around the pandemic. But one thing I can confirm about our Board is their commitment to achieving strong and meaningful community impacts regardless of whether we're meeting over ZOOM or masked up and in-person. The difficulties we as a Board were forced to grapple with are in many ways representative of the greater challenges Extension faced in providing value to the Yates County community as we continue to work through the pandemic. However, at the same time there are challenges, there are also opportunities. Providing more online content and recognizing the flexibility that virtual resources can give you, I believe, will remain part of the “new normal” even after we put the pandemic behind us.

Thinking ahead to 2022, I am looking forward to continuing to work

with CCE-Yates County Staff and Educators, as well as with the Board of Directors, and community collaborators. While it remains to be seen when we can host in-person gatherings again safely, I am confident that the creativity and adaptability of this association will continue to shine through regardless of any changes to come.

One change coming in the next year is the appointment of our newest Board Member: Trish Bagley. Trish has been an active member of the Izaak Walton League and a champion of 4-H programming for many years (having served on the 4-H Parent Advisory Board). I do not doubt that she will bring fresh ideas and experience to our Board.

I would also like to acknowledge the three Board members whose terms are ending this year. Wendy Disbrow, Tim Christensen, and Kris Pearson have brought an incredible amount of leadership, expertise, and community connection to the Board. We much appreciate and will miss their contributions. I do not doubt that they will continue to share their knowledge and time in our community.

Finally, I want to express my gratitude to Executive Director Arlene Wilson and the CCE-Yates County staff and educators. We are very grateful for your dedication to our community and members and look forward to continuing to work alongside such a superb team of individuals. I also want to acknowledge the continued support of the Yates County Legislature, and the constituents they represent.

In closing, I am very grateful for all we accomplished in 2021. While the year was challenging and ever-changing, the ability of the Board, Arlene, and the staff to adapt and excel is commendable. CCE-Yates County is truly a world-class organization, and I am very proud to be a part of and supportive of it. I look forward to what comes next.

Stay safe and well,

A handwritten signature in blue ink, appearing to read "James Smith". The signature is fluid and cursive.

James Smith
CCE- Yates County Board President

Mission Statement

Cornell Cooperative Extension of Yates County puts knowledge to work in pursuit of economic vitality, ecological sustainability and social well-being.

We bring local experience and research-based solutions together, helping local Yates County families and communities thrive in our rapidly changing world.

Cornell Cooperative Extension of Yates County

417 Liberty Street,
Penn Yan, NY 14527

Phone: 315-536-5123

Fax: 315-536-5117

Web: <http://yates.cce.cornell.edu>

CCE Yates Board of Directors 2022

James Smith, President

Anne Waasdorp, Vice President

Sirene Garcia, Secretary

Daniel Wickham, Treasurer

Carlie Chilson, Legislative Representative

Adam Hughes, Cornell Representative, State Specialist

Trish Bagley

Bill Laffin

Suzanne Patterson

Andrew Zimmerman

CCE Yates Staff Directory 2022

Arlene Wilson, Executive Director	aaw66@cornell.edu
Jennifer Clancey, 4-H Team Leader	jja26@cornell.edu
Brittany Griffin, Administrative Assistant	bg393@cornell.edu
Maggie Mahr, Marketing Coordinator	mam752@cornell.edu
Caroline Boutard-Hunt, Ag Educator	cb239@cornell.edu
Vallie Castner, Life Skills Educator	vgc8@cornell.edu
Hans Walter Peterson, FLGP Team Leader	hcw5@cornell.edu
Donald Caldwell, Viticulture Technician	dc886@cornell.edu
Judson Reid, CVP/HNY Team Leader	jer11@cornell.edu
Cheryl Flynn, Master Gardener Coordinator	cj348@cornell.edu

Finger Lakes Shared Business Network 2021 Update

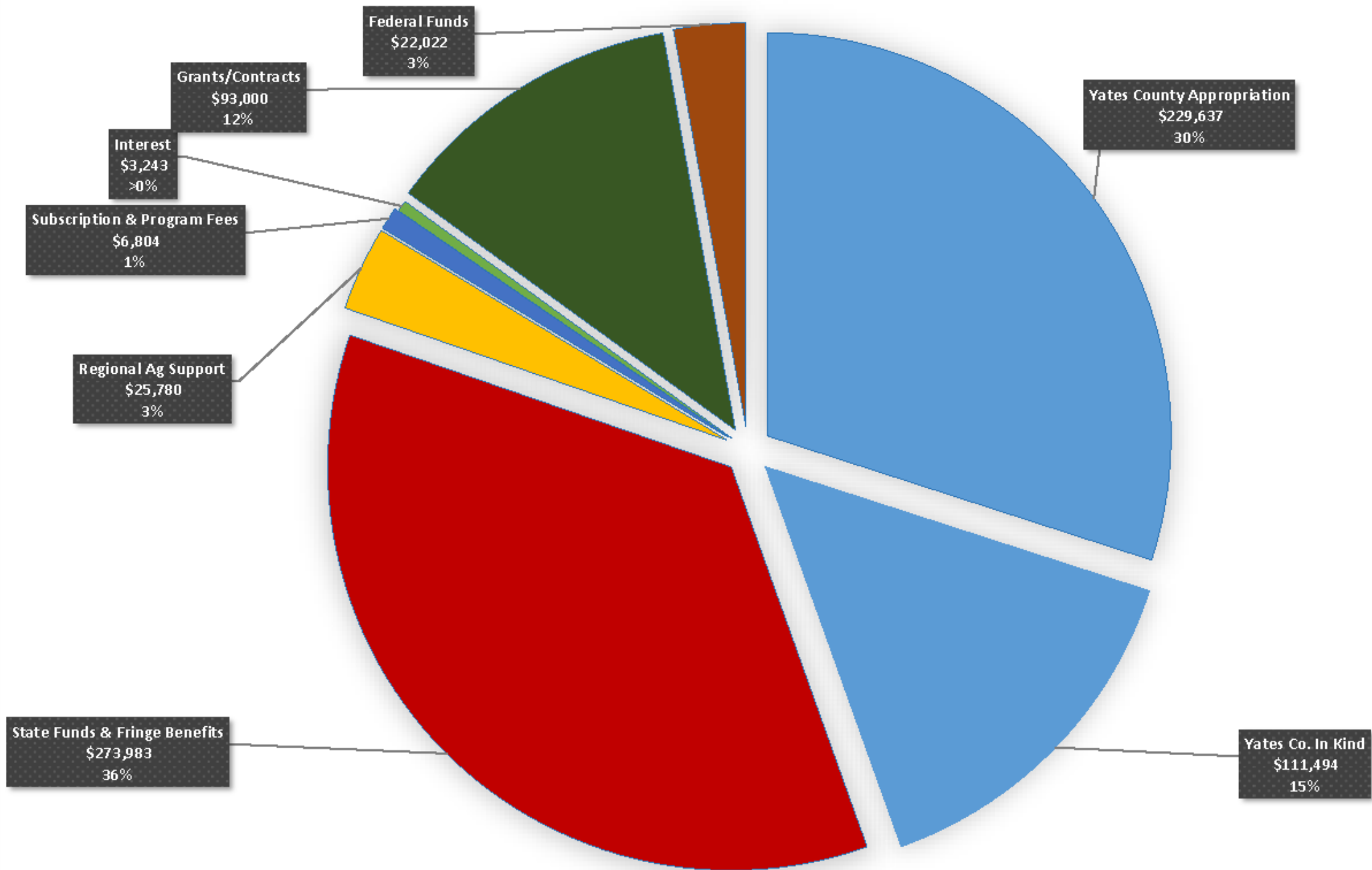


Jolie Spiers (pictured) joined CCE Livingston in June 2020. In addition to her role with Livingston County, she is also Lead Executive Director for the Finger Lakes Shared Business Network which provides cooperative resources to a seven county team of CCE associations.



- **Christi Smith** joined the Finger Lakes SBN team in 2021 as our new FLSBN Lead HR Manager. Christi and the SBN HR Leads across the state have continued to help Associations navigate the challenges of the complicated and ever-changing COVID-19 landscape. Christi and our former IT Lead Cate Sirek worked together to overhaul our regional staff server to better organize information, resources, and professional development opportunities and other supports in ways that are more user friendly and intuitive, as a first step in standardizing and building cohesive procedures and support systems for the region.
- **John Bouwens** joined the Finger Lakes SBN team in 2021 as our new FLSBN Lead Finance Manager and along with the State Finance Leads continues the work to move financial components to Acumatica, our new statewide finance system, such as fixed assets and the new in-program approval system. A standardized reporting workbook was developed to minimize coding errors and allow for on-demand statewide reporting for the University. John continues to train finance staff on Acumatica and other important finance issues.
- The SBN team collaborated to implement our virtual **Staff-a-palooza** this fall. While COVID impeded the ability for our entire region to gather together in one physical space, many offices gathered to join our virtual day. We had some great trainings and look forward to gathering in person next year.
- **Cate Sirek**, our Finger Lakes SBN Lead IT Manager, retired this fall. We will miss Cate dearly and thank her for her many years of service with CCE! The new Lead IT Manager will be announced in January 2022.

2021 CCE Revenue Resources



Executive Director's Note



During the second year of the COVID-19 pandemic, CCE-Yates has restructured and reinvented community outreach and education. We developed new forms of education delivery, using multiple social media platforms, online workshops, hybrid in-person/online education, and recorded webinars for more convenient participation. CCE-Yates has also gleaned from our Extension centennial project to reconstitute historical methods of outreach, including print mailing subscriptions, home study packets for pesticide credit courses, and youth activity kits.

In these uncertain times, partnerships are more important than ever. Invasive species mapping and food access research have benefitted from Keuka College and Cornell student interns. We addressed food insecurity in partnership with the Penn Yan Elks Lodge, Yates County DSS, NYS Agriculture and Markets, and the Town of Starkey through several garden kit distributions.

Utilizing our community networks, NY State, and national extension partners, we have been able to expand our work, finding and sharing best practices in the realm of clean energy (geothermal heat pumps), helping local businesses get NYSERDA vendor certification and get contracts for local/regional work. We are working with our partner cooperative extension educators and team leaders to bring best practices on solar installation while balancing the need to protect valuable farmland. Our staff and Master Gardener volunteers continue their work in community gardens, produce donations to food pantries. SNAP-ED Southern FLX provided online workshops on nutrition and recipes booklets for low to moderate-income families.

CCE-Yates also provided technical assistance and support to the local agriculture community. Our commitment to invasive species education was swift and continuous in 2021; watershed management continued with volunteer shoreline monitors and participation in 'stream teams' testing the quality of water flowing into Keuka Lake.

CCE-Yates will continue this work into 2022—wearing face coverings as mandated, providing hand sanitizer (call the office for gallon bottles or 2 oz. sprays), providing educational materials (Hike & Bike Guide, Taste of Yates Local Food Guide), subscription publications (Yates Farm Update, Gardening Matters), and keeping you up to date on changes and activities in local newspapers, radio, and social media.

As we ready and steady ourselves for whatever comes next in 2022, Cornell Cooperative Extension of Yates County will continue its work.

Sincerely,

**Arlene A. Wilson, Executive Director
Cornell Cooperative Extension of Yates County**

January 2022



Sunday	Monday	Tuesday	Wednesday	Thursday	Friday	Saturday
26	27	28	29	30	31	1 New Year's Day
2	3	4	5	6	7	8
9	10	11	12	13	14	15
16	17 ML King Day	18	19	20	21	22
23	24	25	26	27	28	29
30	31	Notes: _____ _____ _____ _____				



Community Feedback

“The program is all good, but the hands-on part, writing out your expenses, helped with comprehension and is visual. I am saving my receipts now”.

“I really liked learning about and uses; price comparison information and learned how to use unit pricing. I am trying non-name brand items and savings can happen by using this information. Here are 2 examples: I changed from solely using Clorox bleach to a generic brand and from Aquafina water to a store brand”.

“...Participating in this program made me realize and understand (my) rights and responsibilities with earned income...would recommend this program to others, and the hands-on activities are the most useful and long lasting”.

“It was a blessing to come, get help, and I can help our children (pass it on). I did not learn this growing up, but I am making changes”.

Family, Budget, & Life Skills Programming

Cornell Cooperative Extension of Yates County offers the TANF (Temporary Assistance for Needy Families) Life Skills 1:1 program to eligible, qualifying Yates County residents. This is a number limited (20 per year) as well as specific eligibility requirements due to the program funding. While it is specific in terms of participant eligibility, the program is rich with information, education, tips, and tools which are provided to family participants.

It has been important to assist individuals and families to help address their additional needs during these difficult and changing times. Efforts included the following: home drop-offs of program materials, garden seed kit distribution, and assisted with blankets, clothing, bath towels, and household items. Encouragement/assistance with connecting to local community resources (Keuka Housing Council, Inc./ESG, The Well, the Keuka Pantry, and DSS) for possible funding assistance and food security. Sometimes an individual just needed the physical accompaniment and

encouragement of our CCE Life Skills educator when reaching out to a local resource. Some past program participants have requested to have monthly check-ins (a text, email, or phone call and to be notified of any new updates and community resource information).

CCE partners with Workforce Development to offer Self Sufficiency workshops. This year the workshops have been presented virtually via Zoom and topics include community resources, budget education/information, a food unit, simple energy tips, and more.

To see if you qualify for the TANF Life Skills 1:1 Program, contact the CCE-Yates County office at 315-536-5123, or visit us

How can we help you meet your savings goals?



February 2022



Sunday	Monday	Tuesday	Wednesday	Thursday	Friday	Saturday
30	31	1	2 Groundhog Day	3	4	5
6	7	8	9	10	11	12
13	14 Valentine's Day	15	16	17	18	19
20	21 Presidents' Day	22	23	24	25	26
27	28	1	2	3	4	5
6	7	Notes: _____ _____ _____ _____ _____				

Agriculture Programming Update

Pesticide Safety and Trainings:

In November of 2020, New York Department of Environmental Conservation ended its period of enforcement discretion on certain private pesticide applicator requirements including re-certification. However, due to the ongoing pandemic, in-person classes were largely not available for farmers to make up the credit opportunities lost in the spring, summer and fall. CCE -Yates balanced the needs of farmers for credits with the importance of preventing the spread of Covid-19. In-person classes were held throughout the winter in early spring with limited numbers of attendees and ample social distancing to keep everyone as safe as possible. We offered **two (2)** in-person private pesticide applicator license trainings to reduce numbers. We also developed a paper copy “at-home training” when Covid numbers peaked in January and an in-person training wasn’t possible. We also worked with NYS DEC to host **three (3) exams** in the County Building throughout the winter.

Over February and March, along with Judson Reid from the Cornell Vegetable Program, CCE Yates provided **five (5)** workshops for pesticide credits at no charge to participants to provide farmers with ample opportunities for recertification classes. Subjects covered included Integrated Pest Management, balancing pollinator health with pest management, potato leafhopper and management of common greenhouse and high tunnel pests.

Customer Service & Workshops

- Answered over **90** Ag-related queries in the past year.
- Total Workshop Participants– **82**
- Published the Yates County Farm Update providing up-to-date recommendations for forage and field crop farmers weekly May through September in 2021
- **2021 workshops:**
 - Apple grafting
 - Covid-19 and Agritourism Workshop (multi-county workshop)
 - Minority and Women-owned Business Enterprise Certification Made Easy
 - Navigating Solar Lease Agreements for Farmers



Food Safety:

As the Food Safety Modernization Act (FSMA) eligibility expands to cover many of the smaller farms, CCE Yates continues to pair with organizations across the region to provide food safety education and support to farms covered by FSMA.

Our office collaborated with Cornell Vegetable Program and CCE Broome to facilitate and present at three online food safety trainings including GAPs training-writing a food safety plan and Assess and Prevent Food Safety Risks thru the Lens of Leafy Greens webinar. In addition, we collaborated with CCE Seneca and the Cornell Vegetable Program to hold an in-person FSMA training this summer at the Seneca Produce Auction.

We have continued to collaborate with New York Agriculture and Markets to provide On-Farm-Readiness-Reviews to farms in Yates, Ontario, Schuyler and Monroe Counties. These walk-through visits are a way for farms to evaluate where their current practices align the Food Safety Modernization Act and what changes they could make to reduce risks of microbial contamination on the farm.

March 2022



Sunday	Monday	Tuesday	Wednesday	Thursday	Friday	Saturday
27	28	1	2	3	4	5
6	7	8	9	10	11	12
13 Daylight Savings Time	14	15	16	17	18	19
20 Spring Begins	21	22	23	24	25	26
27	28	29	30	31	1	2
3	4	Notes: _____ _____ _____				

Gardening Matters Day 2021:



Photo Credit: Cheryl Flynn

Despite blustery weather, we had a wonderful group at **Gardening Matters Day** (formally known as Yard N' Garden Day). The Master Gardener volunteers presented on various topics from container gardening to installing drip irrigation in a home-garden setting.

Container Gardening Kits:

CCE Yates County has distributed **400** container garden kits within Yates County since March of 2021, thanks to the generosity of **Penn Yan Elks Lodge #1722** and an Ag and Markets multi-county grant. These kits contained pots, soil and seeds along with complete growing instructions and follow-up support as needed.



Photo Credit: Maggie Mahr

Penn Yan Community Garden & the Vegetable Variety Trials:



Photo Credit: Arlene Wilson

The Master Gardeners took part in the annual Cornell Vegetable Variety Trials where we evaluate seed varieties for their attributes in our county. The data collected is then compiled with other counties on a statewide website which gardeners can use to evaluate how a variety will do in their own growing regions. In addition to the produce harvested from the trials, the Master Gardeners grew, harvest and donated **650** pounds of fresh vegetables and herbs to the Hope Food Pantry.



The Master Gardener Program is a national program of trained volunteers who work in partnership with their county Cooperative Extension Office to share information throughout the community.

By The Numbers:

- **72** queries answered in the office
- **20** soil samples tested by the Master Gardener Coordinator
- **650** pounds of produce donated to the Hope Food Pantry by the Master Gardeners
- **400** container garden kits distributed within Yates County
- **78** total attendees at **8** in-person Master Gardener workshops for 2021
- Held a spring native plants for pollinators sale and fall bulb sale
- Participated in New York State Composting Week Education and Outreach

April 2022



Sunday	Monday	Tuesday	Wednesday	Thursday	Friday	Saturday
27	28	29	30	31	1	2
3	4	5	6	7	8	9
10	11	12	13	14	15	16
17	18 Taxes Due	19	20	21	22 Earth Day	23
24	25	26	27	28	29	30
1	2	Notes: _____ _____ _____ _____				

Natural Resources Education

Watercraft Stewardship & Shoreline Monitoring:

Since 2015, CCE-Yates County has worked with the Keuka Lake Association in developing and maintaining the Watercraft Steward Program for Keuka Lake. With Summer 2021 being the program's 6th season, the Stewards' goal stayed the same: to offer voluntary inspections to boaters to check for any organic material that might be caught on their boats or trailers, and educate about AIS and steps boaters can take to "Clean, Drain, and Dry" their watercrafts. This summer, the Watercraft Stewards inspected **8,036*** watercrafts, and interacted with **19,848** individuals.

*422 watercrafts were not inspected due to either refusal or COVID-19



Photo Credit: Tomilynn Harris



STARRY STONEWORT DASH HARVESTING

In August 2021, Keuka Lake was treated to a new measure to address starry stonewort and prevent its spread. This year, the Starry Stonewort Collaborative team implemented the use of **diver assisted suction harvesting (DASH)** for removal. DASH is a special harvesting system that can remove up to 95% of the biomass of SSW. Divers pull the "plants" from the sediments including the attached rhizomes and bulbils and feed them into a suction hose. The biomass is deposited on a boat fitted with filter trays to capture all fragments and tiny bulbils. It is then transferred to the shore for dewatering and composting.

May 2022



Sunday	Monday	Tuesday	Wednesday	Thursday	Friday	Saturday
1	2	3	4	5	6	7
8 Mother's Day	9	10	11	12	13	14
15	16	17	18	19	20	21
22	23	24	25	26	27	28
29	30 Memorial Day	31	1	2	3	4
5	6	Notes: _____ _____ _____				



Cornell Cooperative Extension Cornell Vegetable Program

2021 Programming Update

Cornell Vegetable Program serves a **14-County Region**, including Yates County. This region accounts for more than half of all vegetable acres in the state with **1,229** farms, and a farm gate value exceeding **\$200 million**. Last year, the CVP specialists made **3,588 farm** visits and crop consultations.

The team conducted **83** educational meetings and presentations where **3,025** people increased their knowledge. Over **90 farms** and businesses support our work by allowing us to conduct on farm research and education events. The team has over **30 active grant projects**.

Yates County continues to be the home of the largest concentration of high tunnel greenhouse operations in the state, and is the center of our research and outreach program.

The Cornell Vegetable Program continues to make impacts on the growers and agri-business professionals of the vegetable industry of New York.

The Cornell Vegetable Program is a Cornell Cooperative Extension partnership between Cornell University and CCE Associations in 14 counties: Allegany, Cattaraugus, Chautauqua, Erie, Genesee, Monroe, Niagara, Ontario, Orleans, Oswego, Seneca, Steuben, Wayne and Yates in 2021.

By the Numbers:

Counties Served: **14**

Total Vegetable Farms:
1,229

Average Farm Value: **\$200 million**

Total Farm Visits: **3,588**

Total Educational
Meetings: **83**

Total Participants: **3,025**

Farm Research Support:
90

Active Grant Projects: **30**

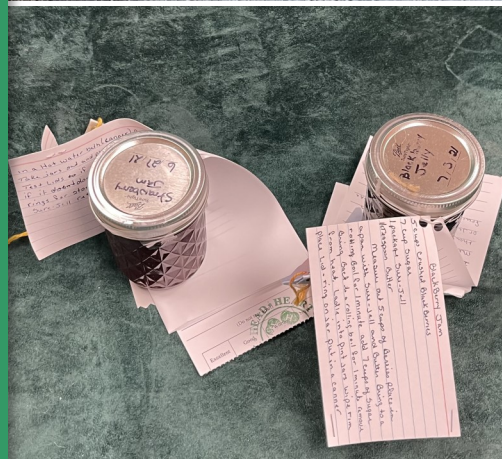
June 2022



Sunday	Monday	Tuesday	Wednesday	Thursday	Friday	Saturday
29	30	31	1	2	3	4
5	6	7	8	9	10	11
12	13	14 Flag Day	15	16	17	18
19 Father's Day	20	21 Summer Begins	22	23	24	25
26	27	28	29	30	1	2
3	4	Notes: _____ _____ _____				



Yates County 4-H Youth Development programs promote healthy lifestyles, citizenship, leadership, and increased self-esteem in youth within our county through their participation in public presentations, community service opportunities, project work ranging from animal science to food and nutrition, horticulture, outdoor education, and more, as well as various club activities.



By the Numbers:

Exhibit Hall Projects – 50 projects, 11 youth

Animal Science Shows - 35 Animals, 10 youth, 4 new exhibitors

- Poultry (6), Dog (3), Dairy (3), Rabbit (5), and Goat (18)**

Yates County 4-H Spectacular

The past year and a half has taught us all to be flexible, adaptive, and to make the very best out of each situation. Many of our Yates County 4-H members did just that this past summer, as county fair events shifted to a summer-long spectacular showcase.

4-H members, parents, staff, and volunteers came together this summer to help 4-H members display and highlight the skills and knowledge gained through the past year's project work. 4-H project judging, animal science shows, and knowledge contests were all part of this year's festivities. Congratulations to this year's youth for their efforts and accomplishments and a special thank you to our 4-H parents, volunteers, and community members who helped make this year's events a success.

July 2022



Sunday	Monday	Tuesday	Wednesday	Thursday	Friday	Saturday
26	27	28	29	30	1	2
3	4 Independence Day	5	6	7	8	9
10	11	12	13	14	15	16
17	18	19	20	21	22	23
24	25	26	27	28	29	30
31	1	Notes: _____ _____ _____				

2021 Friends of Extension

CCE of Yates County continues to serve all residents, businesses, and communities. CCE's programs touch the lives of many in our community. We would like to thank the individuals, families, and businesses listed below that support us through the Friend of Cornell Cooperative Extension fundraising efforts. We would also like to acknowledge our gratitude of the grants received from the organizations and foundations. To date*, we have raised over **\$7,500** through this campaign. Our gratitude goes out to the following contributors:

Mr. & Mrs. Timothy Acomb – In Honor of the Glenn Alexander Family

Barbara Bailey

David & Jessica Baum

Bedient Vineyards

Buzzard Crest Vineyards/Barrington Cellars

Clearview Farm & Vineyards, LLC

Robert L. Corcoran

Wendy Disbrow

Fox Run Vineyards

Dr. & Mrs. Gerry Gacioche

Peter & Mary Beth Gamba

Susan Gibson– In Honor of Dana Gibson

Lew Ann Giles

Glenora Wine Cellars, Inc.

Louis & Donna Gridley (Gridley Vineyards)

Bruce & Judy Habberfield

Horning's Greenhouse

Norman H. & Sharon Hunt

Donald "Skip" & Jennifer Jensen

Bill Laffin

J. Robert & Madeleine Lawrence

Lilyea Farms, LLC

Long's Cards and Books

Loyal Order of the Moose #2300

Malcolm & Drury MacKenzie

Bill & Alise Mahr

Mary-Howell & Klaas Martens (Lakeview Organic Grain) – In Honor of Yates County Organic Farmers

Martini Vineyards

McGregor Vineyard

Margo & Fletcher McTaggart

Morgan's Grocery

Mr. & Mrs. Richard Osgood

Doug & Joan Paddock

Thomas A. Pearson, PhD

Penn Yan Elks Lodge #1722

Pine Ridge Vineyards

Seneca Duck Hunter's Club

Seneca Shore Wine Cellars

James Smith

Tabora Farm & Winery

Anne Waasdorp

Ralph & Anne Meyer-Wilber– In Honor of Wendy Brock (Yates County 4-H Extension Agent)

Foundation Support

FLX GIVES 2021 Fundraising Drive

Joan and Harold Feinbloom Foundation

Elks Foundation Beacon Grant

Cornell Innovation Grant

Tripp Family Foundation

Yates County Planning Dept. Natural Resources Grant

DEC Emergency Food Grant

Yates Endowment Relief Grant

NYS Agriculture and Markets

Mueller Foundation Grant

Many thanks as well to those contributors wishing to not have their names published.

*** As of 12/30/2021**

August 2022



Sunday	Monday	Tuesday	Wednesday	Thursday	Friday	Saturday
31	1	2	3	4	5	6
7	8	9	10	11	12	13
14	15	16	17	18	19	20
21	22	23	24	25	26	27
28	29	30	31	1	2	3
4	5	Notes: _____ _____ _____ _____				

Cornell Cooperative Extension Finger Lakes Grape Program

The Finger Lakes Grape Program is a partnership between Cornell University and the Cornell Cooperative Extension Associations in Ontario, Seneca, Schuyler, Steuben, Wayne and Yates Counties.

By the Numbers

Counties Served: **6**

of Yates County

Enrollments: **41**

Spring 2021 IPM Meeting

Attendance: **100 growers (virtual), 15 in-person**

Tailgate Meetings Held: **4**

Virtual Meetings, 3 In-person Meetings

Total Attendance: **53 growers virtually, 41 in-person**

FLGP Goes “Hybrid” With 2021 Meetings

One of the lessons that we took from 2020 is that there can be benefits to virtual meetings, such as less driving and not worrying about weather. However, not all of our clientele are able to attend virtual meetings or simply prefer not to do so. In order to address the needs of both groups this year, the FLGP arranged for a “hybrid” approach to this year’s meeting season. For the second consecutive year, our Spring IPM meeting was held virtually over Zoom, with over **100 growers** participating in the meeting. Two weeks later, we were able to hold an in-person version of the IPM meeting at a farm in Yates County, which was attended by about **15 growers**, most of whom could not attend the virtual meeting earlier.

Our Tailgate Meetings were also split between virtual and in-person meetings, with four virtual meetings, and three in-person meetings. Growers were still eligible to earn pesticide credits at every meeting. Feedback from growers in both settings was very positive. The growers at the in-person meetings were appreciative of having the option of not using technology, but still receiving the information that they need, while growers who have attended the virtual meetings appreciate the time savings and convenience of being able to attend a meeting from their home or office. It is highly likely that we will continue with this combination of in-person and virtual Tailgate Meetings in future years.

September 2022



Sunday	Monday	Tuesday	Wednesday	Thursday	Friday	Saturday
28	29	30	31	1	2	3
4	5 Labor Day	6	7	8	9	10
11	12	13	14	15	16	17
18	19	20	21	22	23 Fall Begins	24
25	26	27	28	29	30	1
2	3	Notes: _____ _____ _____				



By The Numbers:

- **1156** youth reached via 4-H and county-wide youth collaborations
- Over **1800** contact hours of positive youth development programming
- **88** youth programs provided
- **71** youth reached via 4-H Project Kits
- Over **50** youth completed community service projects around Yates County
- Geo-Caching Group – Met throughout the spring and summer at the Outlet Trail, Glenwood Cemetery in Watkins Glen, and the Ontario Pathways Trail – **8 youth members**
- Public Presentations – Combination of in-person, with 1 virtual presenter - **10 youth total**
- Dog Obedience – 6-week program, with **8 youth participants**
- Rabbit Clinic – **9 youth, 8 adults**
- Poultry Clinic – **8 youth, 5 adults**

Yates County 4-H: To Make The Best Better!

In Yates County, over **1,000** young people are reached each year by 4-H programming efforts. Yates County Cornell Cooperative Extension provides in school, afterschool, and summer youth programming opportunities with our local school districts, libraries, and additional youth serving community partners. Our traditional 4-H program consists of enrolled 4-H members (5-19 years old) learning citizenship, leadership, and life skills that will be carried with them into adulthood. In Yates County, our most popular program areas include animal science, food and nutrition, fine arts and crafts, public presentations, community service, and outdoor education.

As Covid-19 continues to impact our lives, Yates County 4-H continues to work with our families, as well as our local health department to provide program opportunities in a variety of safe and welcoming settings. In 2021, we offered in person programming, following social distancing practices, utilizing outdoor spaces, and limiting group size if needed. We were also able to accommodate hybrid options for families interested in taking part in programming from home.

October 2022



Sunday	Monday	Tuesday	Wednesday	Thursday	Friday	Saturday
25	26	27	28	29	30	1
2	3	4	5	6	7	8
		National 4-H Week, October 2nd-8th, 2022				
9	10 Columbus Day	11	12	13	14	15
16	17	18	19	20	21	22
23	24	25	26	27	28	29
30	31	Notes: _____ _____ _____ _____				

Introducing HeatSmart FLX South

A new program, HeatSmart FLX South, is helping families, small businesses and non-profits choose clean heating and cooling solutions and reduce their energy costs. Through consultations with residents and business owners, free energy audits, weatherization, and energy efficiency upgrades tailored to each person. The goal is for more residents to adopt heat pump heating and cooling equipment to lower energy use for consumers and reduce greenhouse gas emissions.

HeatSmart FLX South serves Schuyler, Seneca, Steuben, and Yates counties, in cooperation with the Cooperative Extension associations of those counties. Based at Cornell Cooperative Extension of Schuyler County, this program is funded by the New York State Energy Research & Development Authority (NYSERDA).

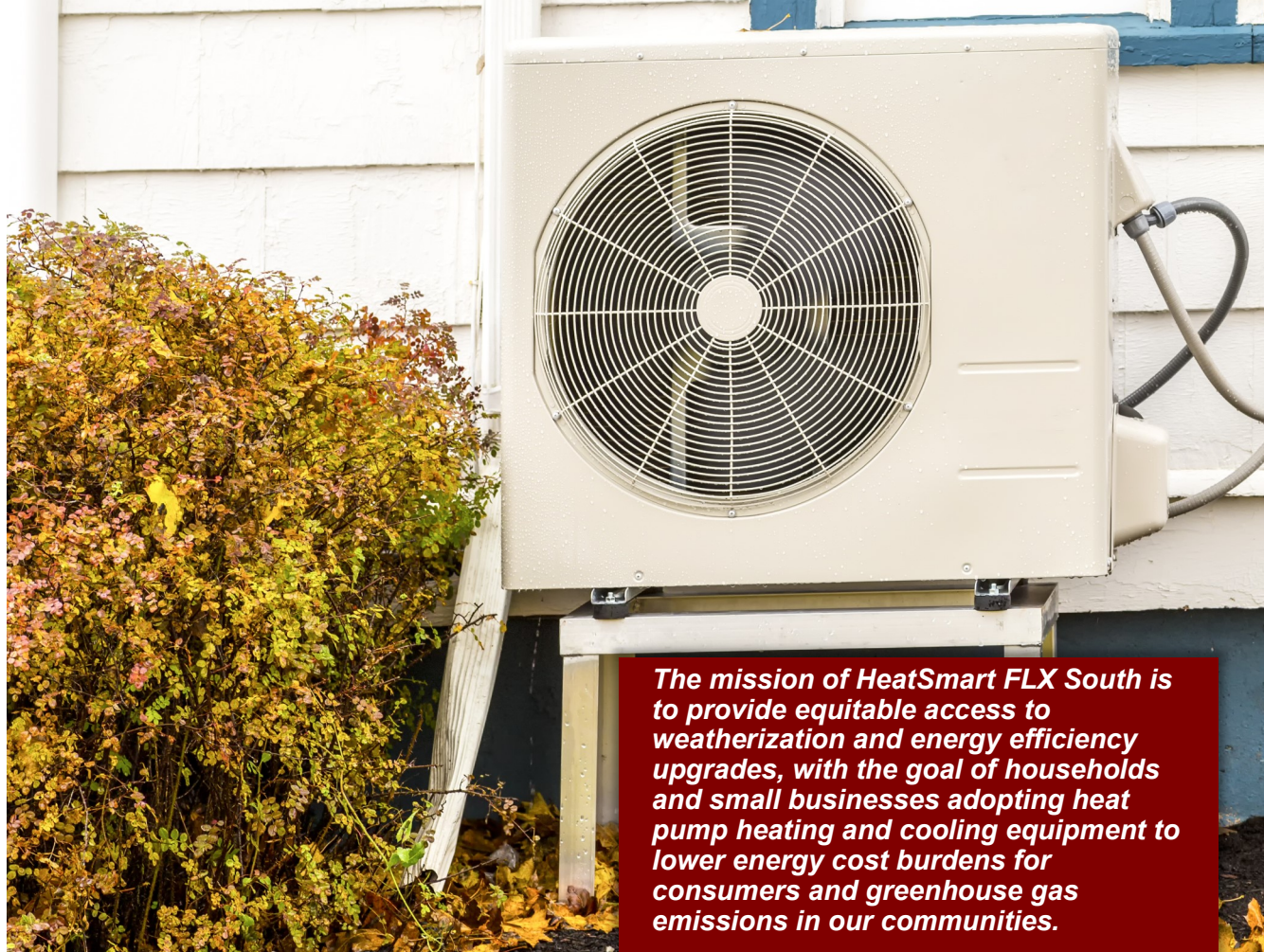
NYSERDA has awarded over \$9 million to support over 20 HeatSmart Community Campaigns throughout the state which conduct community outreach and education efforts to inform residents about the benefits of heat pumps, home energy efficiency improvements and other clean energy technologies.



323 Owego St., Unit 5
Montour Falls, NY 14865
heatsmartflxs@cornell.edu
(607) 535-7161 x 3223

<https://www.facebook.com/FLXSouth>

Find us on 



The mission of HeatSmart FLX South is to provide equitable access to weatherization and energy efficiency upgrades, with the goal of households and small businesses adopting heat pump heating and cooling equipment to lower energy cost burdens for consumers and greenhouse gas emissions in our communities.



*Pictured: Community outreach display at The Windmill (June 19th, 2021)
Photo Credit: Erica Herman*

"Supporting our regional communities is at the heart of this work. We offer free guidance and connect folks to programs and incentives. We want to see all families and small businesses taking advantage of the opportunity to reduce their heating costs and improve energy efficiency."

- Erica Herman
HeatSmart FLX South Campaign
Director

November 2022



Sunday	Monday	Tuesday	Wednesday	Thursday	Friday	Saturday
30	31	1	2	3	4	5
6 Daylight Savings	7	8	9	10	11 Veteran's Day	12
13	14	15	16	17	18	19
20	21	22	23	24 Thanksgiving	25	26
27	28	29	30	1	2	3
4	5	Notes: _____ _____ _____				

Spotted Lanternfly: Monitoring for invasives on the Keuka Outlet Trail



What is tree-of-heaven?

Tree-of-heaven is a widespread invasive tree, and is the preferred host tree of SLF. Since tree-of-heaven is their preferred tree species (especially during certain stages of the SLF's life cycle), knowing where tree-of-heaven clusters are located throughout the county is important for early detection of SLF infestations and for rapid control response.

Visit www.nyimainvasives.org to see if TOH (or other invasive plants) are located near you.

Spotted lanternfly (SLF) is a serious invasive pest that has recently been found in our region. SLF uses its piercing-sucking mouthparts to feed on sap from over 70 different plant species. It has a strong preference for economically important plants including grapevines, maple trees, and fruit trees (but do not bite or sting humans or pets).

The feeding damage significantly stresses the plants which can lead to decreased health and potentially death. As SLF feeds, it excretes a sticky sap, called honeydew rain. This honeydew rain attracts black sooty molds, which can also impact the health of the host plants and attract other insects.

Spotted Lanternfly poses a significant threat to NY's forests and agriculture. Damage and stress caused to host plants, including grapevines and apple trees, could impact fruit yield and lead to economic losses.

What can be done?

By now you've probably heard the mantra "Report. Inspect. Destroy." when it comes to mitigating the spread of Spotted Lanternfly, but did you know there are a wide variety of strategies to manage infestations?

One way to combat spotted lanternfly is the use of circle traps. These traps are essentially mesh wrapped around a tree that guides upward-climbing SLF into a bag or container, where they get trapped and die.

If you've walked the Keuka Outlet trail recently, you'll find one of these traps already established on tree-of-heaven (pictured left). In August 2021, CCE-Yates County produced a behind-the-scenes video about the installation, which can be viewed at: <https://youtu.be/wiwbT0azK6k>.

Do you think you found Spotted Lanternfly in New York? Report it to **NYS Dept. Agriculture and Markets**, using the Spotted Lanternfly Public Report (<https://bit.ly/3ISMIWK>) form.



December 2022



Sunday	Monday	Tuesday	Wednesday	Thursday	Friday	Saturday
27	28	29	30	1	2	3
4	5	6	7	8	9	10
11	12	13	14	15	16	17
18	19	20	21 Winter Begins	22	23	24 Christmas Eve
25 Christmas Day	26	27	28	29	30	31 New Year's Eve
1	2	Notes: _____ _____ _____ _____				

“The county agent’s work begins with earthy and genetic things. But his sights are raised always upward and onward. He works for better farms through better men, women, and children on farms...He knows that they, like the rest of mankind, come into the world with possibilities. They need, he hopes, only the stimulus of his sympathetic and magic touch to bring out, from their hearts, the permanent and satisfying rural civilization of which he dreams.”

-Kenneth D. Scott
A Tribute To The County Agricultural Agent

Cornell Cooperative Extension Yates County

417 Liberty Street
Penn Yan, NY 14527

<http://yates.cce.cornell.edu>

 facebook.com/CCEYates

 [@CCEYates](https://twitter.com/CCEYates)

 [YouTube bit.ly/CCEYates](https://YouTube.bit.ly/CCEYates)

“Cornell Cooperative Extension is an employer and educator recognized for valuing AA/EEO, Protected Veterans, and Individuals with Disabilities and provides equal program and employment opportunities”