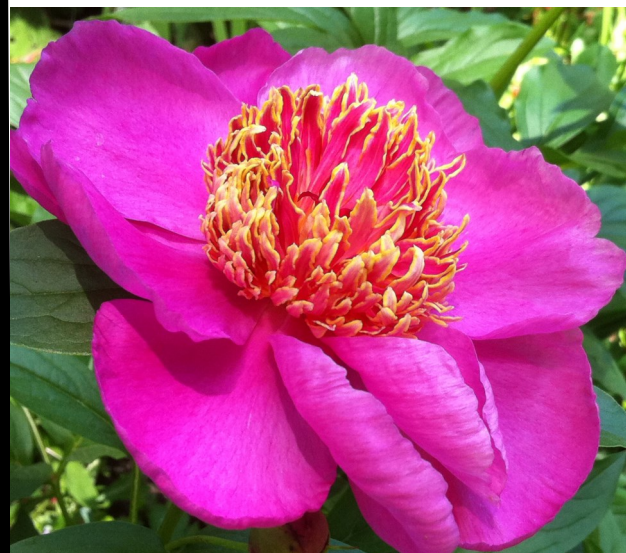


Cornell University
Cooperative Extension

Gardening Through The Seasons Classes for Gardeners



**Tuesdays,
March - May 2015
7:00 – 8:15 pm**

Directions:

From Albany: (exit 23 off Thruway) travel north on Rt. 787 to exit 8. Take a right at the end of the exit ramp and a right at the next light. Cross the Green Island Bridge take a right at the second light onto 6th Ave. At the second light take a left onto State St. and park in the parking lot at the end of the street. We are located on the second floor of the two-story brick building.

From the Northway (Rt. 87) Take Exit 7 to Route 7 east. As you cross the Collar City Bridge (Hudson River) take the "Downtown Troy" exit, stay in the left lane of the exit ramp to 6th Ave. At the fourth traffic light (State St.) take a left and park in the parking lot at the end of the street. We are located on the second floor of the two-story brick building.



“Cornell Cooperative Extension is an employer and educator recognized for valuing AA/EEO, Protected Veterans, and Individuals with Disabilities and provides equal program and employment opportunities”

Welcome!

We are pleased to offer our “Gardening Through The Seasons Classes” once again, and we invite you to participate!

Call 272-4210 for information on weather-related cancellations or last minute registration.

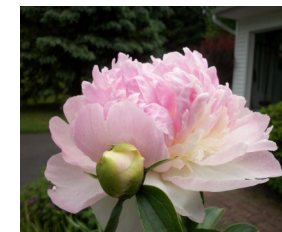


Classes are held at the Extension Education Center, 61 State St., Troy, NY.



rensselaer.cce.cornell.edu

Garden Journeys



Being a gardener gives you an opportunity to constantly try new plants, planting methods, garden designs, and other ideas.

Whether you want to grow build a raised bed garden, start a terrarium, learn about rain gardens or explore gardens of the Hudson Valley, we have a class for you! Come join us this spring as we take a look at a variety of gardening topics sure to beautify your home and enliven your spirit.

Here Are The Details:

Each class starts at 7:00 PM and runs until about 8:15 PM. Pre-registration is required. Each class is \$6.00 per person. Class size is limited. Registration at the door will only be accepted if space is available. Class may be cancelled due to insufficient registration. Classes may also be cancelled for inclement weather.

Individuals with questions or special needs requiring accommodation should contact CCE at (518) 272-4210



Tuesday, March 31

Why Natives and not Invasives?

Native plants are hot, and those that misbehave are not! This presentation will cover the ecological, economical, and human health harm of invasive species. Specific species will be highlighted along with their impacts, and examples of native alternatives to plant will be shared. Presenter Laurel R. Gailor is the Capital / Mohawk Partnership for Regional Invasive Species Management (PRISM) Coordinator.



Tuesday, April 7

Terrariums: Miniature Worlds Under Glass

Popular in Victorian times and again in the 1970's, terrariums, or gardens in bottles, brandy snifters, fish tanks or similar containers, are making a comeback today. Making your own "world under glass" is an easy and fun project. Join Master Gardener Pat Mulligan and friends for this live demonstration!

Tuesday, April 14

In Praise Of Raised Beds

Many gardeners have discovered that growing vegetables in raised beds has many advantages, and David Chinery, educator with Cornell Cooperative Extension in Rensselaer County, will point them out to you. Materials for construction, where to build your raised bed and how big to make it will all be discussed, along with photos of many examples for inspiration. This program will help you "raise" better vegetables – you won't be able to "contain" your excitement!

Bring a soil sample to any class and receive a free pH test!

Tuesday, April 21

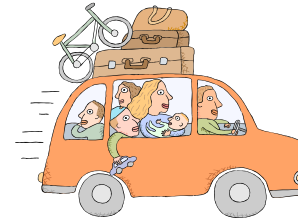
Rain Gardens

Rain gardens are a way to let nature help nature by collecting and filtering storm water run-off, thereby reducing erosion and pollution. They aren't necessarily a solution to a wet spot, but if you are looking for ways to be a better steward of your environment, consider planting a rain garden. Learn the basics of locating a rain garden, what plants to use, and how to maintain it. Presenter Sue Pezzolla is a horticulture educator and Master Gardener Program Coordinator with Cornell Cooperative Extension of Albany County.

Tuesday, April 28

Gardens Of The Hudson Valley

Plan your "stay-cation" this year by visiting some of the most scenic and historic gardens and landscapes in the world, located right here in the Hudson Valley. Extension Educator David Chinery will take you on a colorful journey using slides or Powerpoint to some of the best, including Stonecrop, Wethersfield, Innisfree and more. Sit back and enjoy this relaxing armchair tour!



Tuesday, May 5

Growing A Great Lawn

Do you have an old lawn you would like to improve, specific lawn problems you would like to solve, or just bare dirt where a lawn should be? David Chinery, horticulture educator with Cornell Cooperative Extension of Rensselaer County, will discuss options and strategies available to fix all of the above, including organic ideas, which you can try in 2015!

Registration Form

<i>Sign me up for:</i>	<i>Date</i>	<i>Price</i>
Invasive Species	3/31	6.00
Terrariums	4/7	6.00
In Praise of Raised Beds	4/14	6.00
Rain Gardens	4/21	6.00
Gardens of the Hudson Valley	4/28	6.00
Great Lawn	5/5	6.00
TOTAL ENCLOSED _____		
Name (only one participant per form)		
Address		
Phone		
E-mail		
Please make checks payable to Cornell Cooperative Extension		

Cornell Cooperative Extension
of Rensselaer County
61 State Street
Troy, NY 12180
Phone: 518-272-4210
Fax: 518-272-1648
Email: mmp74@cornell.edu