

2021 Steuben County Swine Picture Judging Contest

-Entries for the Steuben County 4-H Contest are due BY FEBRUARY 1, 2021

-Mail/Email entries to Ainsley (ar935@cornell.edu)

CCE Steuben/Ainsley Owens

20 E. Morris Street

Bath, NY 14810

-Please utilize the attached 2021 National Swine Picture Judging Contest Classes

NAME _____

AGE _____ CLUB _____

-Please enter the letter that corresponds to your placing for each class (**ONLY one letter placing per class**):

A 1234	I 2314	Q 3412
B 1243	J 2341	R 3421
C 1324	K 2413	S 4123
D 1342	L 2431	T 4132
E 1423	M 3124	U 4213
F 1432	N 3142	V 4231
G 2134	O 3214	W 4312
H 2143	P 3241	X 4321

Class 1: Duroc Boars _____

Class 2: Hampshire Boars _____

Class 3: Landrace Boars _____

Class 4: Yorkshire Boars _____

Class 5: Duroc Gilts _____

Class 6: Hampshire Gilts _____

Class 7: Landrace Gilts _____

Class 8: Yorkshire Gilts _____

Class 9: Grand Drive Barrows _____

Class 10: Crossbred Market Hogs _____

Class 1 – Duroc Boars

Scenario: Rank these boars as they should be selected by a purebred Duroc producer. The primary goal of this producer is to generate fast growing market hogs with the end goal of marketing Certified DUROC® Pork to local restaurants and markets. This producer also has a strong custom pork clientele that covets the Certified DUROC® Brand.



Actual Data: 159 DAYS to 250, 7.9 LEA, .86 BF, 109 TSI, 2.3 IMF



Actual Data: 150 DAYS to 250, 8.7 LEA, .72 BF, 117 TSI, 4.6 IMF



Actual Data: 161 DAYS to 250, 8.2 LEA, .64 BF, 112 TSI, 3.1 IMF



Actual Data: 152 DAYS to 250, 8.5 LEA, .70 BF, 115 TSI, 4.2 IMF

Class 2 – Hampshire Boars

Scenario: Rank these boars as they should be selected by a breeder for the use on both purebred Hampshire and Yorkshire sows. Elite purebred and crossbred offspring will be marketed as Junior projects. In order to improve the sow herd and other purebred herds, a select group will either be retained as replacements or marketed through Type Conferences.



Class 3 – Landrace Boars

Scenario: Rank these boars as they should be selected by a commercial hog producer with the intention of mating them to Yorkshire sows. The primary goal of this mating is to retain as many F1 white line females as possible while also generating productive market hogs that will perform well on the finishing floor.



EPDs: +.35 NBA, +1.9 LWT, 121 MLI



EPDs: +.40 NBA, +4.1 LWT, 125 MLI



EPDs: +.42 NBA, +3.9 LWT, 126 MLI



EPDs: +.30 NBA, +3.0 LWT, 118 MLI

Class 4 – Yorkshire Boars

Scenario: Rank these boars as they should be selected by a boar stud owner looking to expand their Yorkshire boar battery. The primary purpose of selected boars will be to generate junior barrow and gilt projects throughout the country. However, this boar stud also services a clientele base of purebred operations that raise Yorkshire seedstock.



Class 5 – Duroc Gilts

Scenario: Rank these gilts as they should be selected as replacements in a purebred operation that utilizes Type Conferences to market elite seedstock and also profits from selling junior barrow and gilt projects.



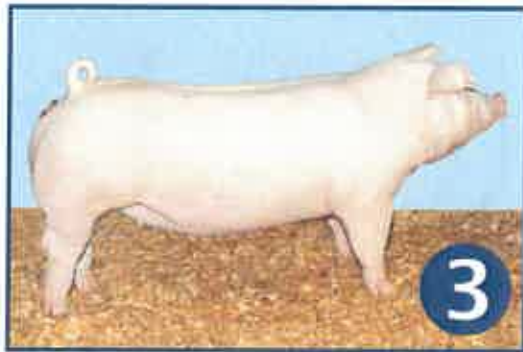
Class 6 – Hampshire Gilts

Scenario: Rank these gilts to be utilize by a progressive purebred breeder. Top replacements will be bred to Hampshire boars to produce seedstock that will be marketed at national shows and sales. Other females will be bred exotic to produce showpigs for local clientele.



Class 7 – Landrace Gilts

Scenario: Rank these gilts as they should be selected by an NJSA member to purchase through a Type Conference Sale. The primary goal with these females will be to breed them with the intention of producing high caliber show gilts to exhibit in the Bred-and-Owned division at NJSA events.



Class 8 – Yorkshire Gilts

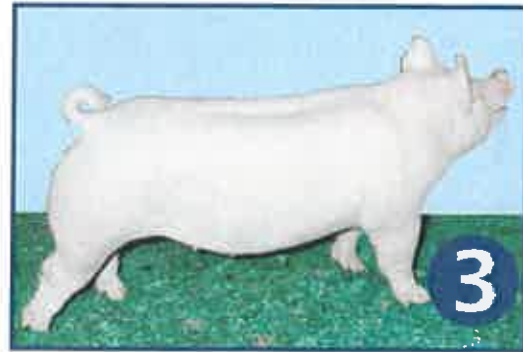
Scenario: Rank these gilts as potential replacements within a purebred seedstock operation focusing on the sale of premier gilts and boars at Type Conferences. Additional revenue is generated from the sale of elite junior barrows and gilts.



EPDs: +.32 NBA, 111 MLI, 115 SPI



EPDs: +.30 NBA, 109 MLI, 113 SPI



EPDs: +.28 NBA, 107 MLI, 112 SPI



EPDs: +.24 NBA, 105 MLI, 108 SPI

Class 9 Grand Drive Barrows



Class 10 Crossbred Market Hogs

