**Range Map**

(Provided by [FAO Fisheries & Agriculture](#))

HARD CLAM

Mercenaria mercenaria

Stable

Conservation Status
Not Threatened

FACT ONE

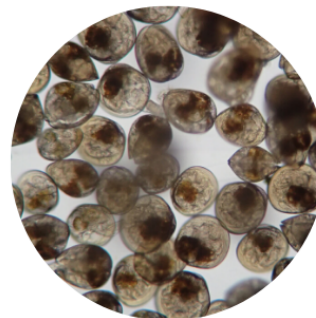
Hard clams are bivalve mollusks. They are invertebrate animals that are covered externally by two shells connected at a hinge.

FACT TWO

Hard clams are filter feeders! They use a set of siphons for respiration and feeding, filtering up to 1 gallon of water per hour.

FACT THREE

Native tribes would cut and polish hard clam shells to make wampum, which was then used for decoration or as currency.

FACT FOUR

Although adult clams are mostly sedentary, they can burrow into sediment using a muscular foot and their life actually starts as planktonic larvae!

For more information about the Hard Clam:

The Animal Diversity Web

https://animaldiversity.org/accounts/Mercenaria_mercenaria/