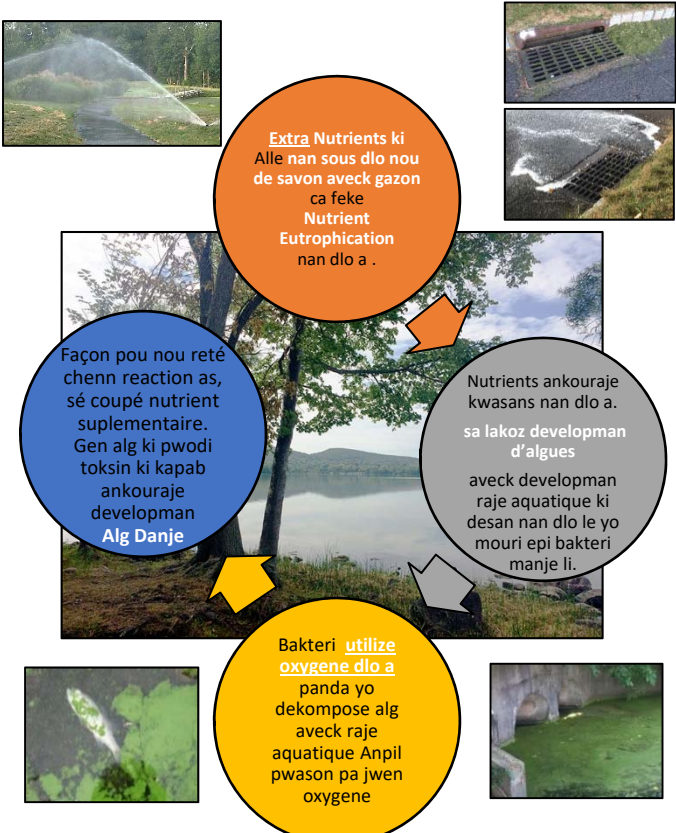


Polisyon Eleman Nitritif

present nan plusieurs source dlo nan Rockland County. Ce à cause de trop nitrogène et phosphorus nutrient ki soti en dehors de activité nou yo et cyclone dlo ki pote byen vite plus nutrient nan tuyo yo et en plus tout près drainage ki vi-n kite yon ti chans pou té a et plants yo purifie yo.

Ça fèke **Nutrient Eutrophication** vi u yo pi gwo problem nan NYS ki kontaminé dlo nou yo.

**Eske nutrient bon pou dlo?
Wi!
Ki jan yo lakòz mal?**



Solution pou Nutrient Pollution

Fumier: Fumier se yon gwo source de nutriment nan recevoir yo si w'ap acheté fumie we Rockland County lwo sou fumie et cherche O nan mitan numéro ki indique phosphorus- free.

Fatra-sable nan la rue ale directement nan dlo locale yo. **Anpil nan dlo nap bwe nan Rockland nan soti anba ter.** Jete de façon pròp; matière fécal, et si nou pa trete trou rego buen, sa kapab voyè parasite, bacteria et nutriments nan source nou yo et dlo anba te yo.



Savon/Detergents: Anpil savon/detergent surtout savon pou lavè machine genyen yon form de phosphorus ki rele phosphate. Utilize bagay ki pa gen phosphorus puis que plant yo pap kapab retire tout et **dlo ki sot lave machine kapab permèt àlgaé grani nan source dlo local yo.**

Kite Feuille, et gazon libre fumier organique kap vini directement retournent nutrient nan gazon ou yo. Anpil inondation inquiétude se résultat drainage ki bouche. **Pa rale, pa pousé ou bien voye dlo ki fe basin kap vin koz inondation et elimine nutirent nan dlo local, encouragé algaé grandi.**

Bon konsèy pou Jaden: Gazon seulman bezwen 2-3 fois dlo de yon te seche ki pa sete ak fumie (moins dlo, moins travay!)

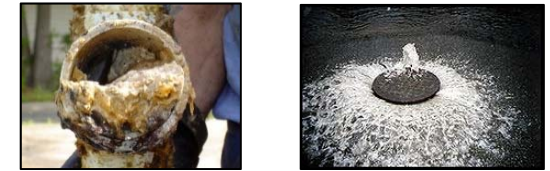


Shredding your leaves with a mulching mower will reduce their volume and speed up decomposition time.



Sanitation Trou Rego Ki Renverse (SSO):

Lavé grès/l'huile ke yo fè mangé nou drain yo ou bien la sé wipe sa ki ta kapab lagé nan brain yo bouche drainage yo et sa **cause inondation** le genyen anpil lapli nan dlo local yo (et nan kay) ki pote nutients, bacteria, et lot patogene. **Vide grès ki frét/l'huile yo fe mangé nan yon container et puis bouché bien dur et jeté-l nan fatra.** Essuyé chaudière yo prop avek yon papier sec avan nou lave li.



Eske'w te konnen?

Dlo tempete tou voye l'huile, sel nan la rue yo, polisyon nan tè yo et deyo la te yo nan source local yo a lieu

Dlo ki gen bon Jaden pral tranpe Eleman nitritif ak polisyon nan dlo lapli!

Jaden ki toletre sechrés ap utilize moins dlo et kapab moins travay aussi fot li fi-n etabli. **Dlo ki tombe nan jaden fet pou kembe dlo kap kouri pou moins de 24h (san moustique)**

Cornell's Water-Wise Landscaping, Rain Gardening:

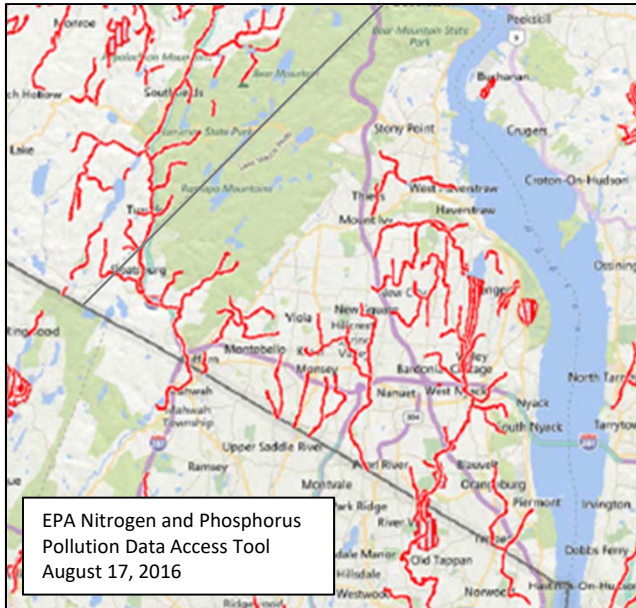
<http://rocklandcce.org/fact-sheets>

EPA Water-Smart Landscapes:

https://www3.epa.gov/watersense/outdoor/landscaping_tips.html



Photo sources courtesy of USEPA, NYSDEC, Keep Rockland Beautiful, Wikipedia



Qualite Dlo nan Rockland County:

EPA ekri nan intention pou nou kapab indentifié micros ki asosie avec nutrition, EPA utilize method categorie sa yo; developman d'algues, amoniaque, nausie aquatique plantes; nutritif enrichissement organique/reduction oxygene

Sediment Verement accumulation de debris environman nan basin yo, surtout sak vini de chantié de construction dwe' raporté nan buru municipal aveck phto (image) si possible, menm tout (material de donte dans les egoux matière fécal, huile et graisse.)

Resous pou plis Enfòmasyon:

Composting Instructions & Lawn Guidance:

<http://rocklandcce.org/gardening/compost-resources>

Learn to Compost/Mulch Fall Leaves:

<http://www.dec.ny.gov/public/46613.html>

Leave it on the Lawn (Grass Clippings):

<http://www.dec.ny.gov/chemical/8816.html>

Rockland County Fertilizer Law Fact-Sheet:

<http://rocklandcce.org/fact-sheets>

Look for the Zero:

http://www.dec.ny.gov/docs/water_pdf/fertbrochure15.pdf

Fertilizer & Pesticide Certificate Programs:

<http://rocklandcce.org/environment/fertilizer-law-certificate-program>

Fason Pou Nou Patisipe!

Get YOUTH, COLLEGE STUDENTS or the WHOLE FAMILY involved with **ENVIRONMENTAL STEWARDSHIP**
Rockland County:

<https://rocklandgov.com/departments/environmental-resources/volunteer-opportunities/>

Rockland County Conservation Service Corps:

<http://rocklandgov.com/departments/youth-bureau/rockland-conservation-and-service-corps/>

Sparkill Creek Watershed Alliance and Strawtown Studio:

<http://www.sparkillcreek.org/>

<https://strawtownstudio.org/>

Keep Rockland Beautiful: Clean-ups, etc.

<http://www.rocklanddc.org/keep-rockland-beautiful>

See your community websites for further events, cleanups, etc.

**Rain Barrels and Composters disponib nan
Cornell University Cooperative Extension oubyen
Rockland County Solid Waste Management Authority**



Educational Resources, cont:

Cornell's Fact Sheets (Xeriscaping, Fertilizing, etc):

<http://rocklandcce.org/fact-sheets>

Stormwater, Green Infrastructure, Illicit Discharge:

<http://rocklandcce.org/stormwater-consortium>

USEPA Nutrient Pollution:

<https://www.epa.gov/nutrientpollution>

USEPA Soak up the Rain:

<https://www.epa.gov/soakuptherain>

Hazardous Algae Blooms:

<http://www.dec.ny.gov/chemical/77118.html>

Sewage Pollution Right to Know:

<http://www.dec.ny.gov/chemical/90315.html>

RC Solid Waste Mgmt Authority:

<http://www.rocklandrecycles.com/>

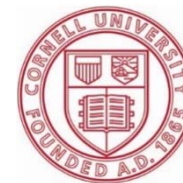
Septic Maintenance:

<http://rocklandgov.com/departments/health/environmental-health/water-pollution-control/>

Kay Ou Et Infulence qualite dlo nan Rockland County



Rockland Lake
Nutrient-Impaired Waterbody



Cornell University

Cooperative Extension

Rockland County

10 Patriot Hills Drive

Stony Point, NY 10980

Phone: (845) 429-7085

Website: www.rocklandcce.org

rocklandcce.org/stormwater-consortium

Cornell Cooperative Extension is an employer and educator recognized for valuing AA/EEO, Protected Veterans, and Individuals with Disabilities and provides equal program and employment opportunities

*This information has been brought to you on behalf of
SUEZ North America Foundation, Inc.*