

SECTION I -- ENTOMOLOGY

Insect specimens must be properly mounted and displayed and have complete collection data. Suggested display case described in 4-H Entomology Project Guide (available through your Extension 4-H Educator) or museum size insect drawers or polystyrene insect cases covered with clear plastic sheets. Exhibits incorrectly prepared will not be evaluated.

GENERAL INSECT COLLECTIONS

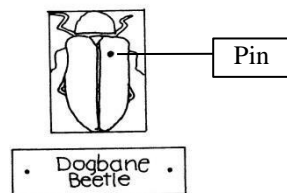
Class No.

1. FIRST YEAR PROJECT EXHIBITS

- Must include a minimum of 20 specimens representing 5 insect orders.
- Classification need not be taken further than *order* names.
- Insects should be pinned properly and the wings of all butterflies and moths must be spread.

2. SECOND YEAR PROJECT EXHIBITS

- Must include a minimum of 40 specimens representing 9 insect orders.
- Twenty specimens must have been collected during the current year.
- Twenty specimens must also be identified to common name with the name written on a label and pinned separately near the specimen (easily visible, to aid in judging):



- Addition of scientific names is optional in this class.
- Insects should be pinned properly and the wings of all butterflies and moths must be spread and at least one small insect must be mounted on a point or minuten pin.

3. THIRD YEAR PROJECT EXHIBITS

- Must include a minimum of 60 specimens representing 12 orders.
- Thirty specimens must have been collected during the current year.
- Thirty specimens must be identified to common name.
- At least 5 specimens (representing at least five families) must be identified to family.
- Scientific names (genus and species) should be included wherever possible, although insects from some orders will be difficult to identify to this level; common names should be placed on a separate label pinned near the specimen as in Class No. 2.
- Insects should be pinned properly and the wings of all butterflies and moths must be spread and at least two small insects must be mounted on points or minuten pins.

4. FOURTH YEAR (AND BEYOND) PROJECT EXHIBITS

- Must consist of general collections.
- Must include 80 specimens representing at least 12 orders.
- Forty specimens must have been collected during the current year.
- Forty specimens must be identified to common name.
- At least 10 specimens (representing at least 10 families) must be identified to their family. Scientific names should be included wherever possible. Common names should be placed on a separate label, pinned near the specimen as in Class No. 2.
- Proper mounting (pinned properly, wings of Lepidoptera spread, two small insects on points or minuten) will be strongly emphasized.

ADVANCED INSECT COLLECTIONS

Class No.

5. ADVANCED INSECT COLLECTIONS

- For advanced collections Riker mounts may also be used.
- Complete collection data should accompany all exhibits (where collected, date, and by whom?); can be placed on back of exhibit as long as the evaluator can tell which label goes with each specimen. If you exchange specimens, label as completely as possible, giving location (country, state or province, nearest town), date collected; name of collector; plus any ecological information available such as plant or insect host, habitat, etc.
- Imagination and individuality are encouraged.
- The rules for mounting, as set up for general collections, do not have to be followed, if, by doing so, the advanced collection can be enhanced. The scientific aspects and educational value, appearance, quality and arrangement will be evaluated.
- The Exhibitor Information Statement should contain educational value to you (what you learned) as well as what you see the educational value to others to be.

CLUB and COUNTY EXHIBITS

6. SINGLE COLLECTIONS prepared by the combined efforts of a club.

- May be any kind of insect collection or may represent a group activity that can be presented as an exhibit.
- Regional insect collections prepared for eventual donation to a museum may be entered in this class if prepared by more than one person; otherwise these should be entered under Class No. 4.
- Evaluation will be based on number of members and completeness of exhibit.

EXHIBITS OF LIVING INSECTS

7. LIVING INSECT EXHIBIT

- Exhibits must convey an educational message to the public and/or the educational opportunities in 4-H work in the field of Entomology.
- Exhibits are to be arranged by the county 4-H staff and members, and completed by the opening day of the county's time period. Those contemplating Class 8 entries must get approval from the Superintendent of Entomology, Section H.
- *Live educational exhibits* are encouraged. Possible exhibits including living adult butterflies, butterfly chrysalides from which the adults are emerging, caterpillars, ant farms and aquatic insects in water tanks. Showing of a living exhibit requires that the exhibitor be on hand to care for the needs of his or her "livestock" daily.
- Exhibits will be evaluated on: educational value; appearance; quality and arrangement.
- Those planning to prepare exhibits should first make arrangements with the Superintendent.

CRITERIA FOR EVALUATION

GROUP A (1st, 2nd, 3rd yr. general collections)
--

	Points	
1. Order (15 pts.)		
a. Minimum Requirement	13	
b. Extra - one point for each two orders above required number (Max of 2 pts.)	2	
2. Specimens (15 pts.)		
a. Minimum Requirement	13	
b. Extra - one point for 5 specimens above required number (Max of 2 pts.)		2
*3. Identification (20 pts.)		
a. Minimum Requirement	15	
(20 points for 1st year collections - no extra points for keying beyond		

	order)	
b.	Extra - one point for each specimen identified further than required (Max of 5 pts.)	5
4.	Mounting and Labeling (45 pts.)	
a.	Pinning (10 pts.)	
	1) Location of pin through insect	4
	2) Height of insects on pin	4
	3) Angle of insects to pin	2
b.	Labeling (25 pts.)	
	1) Readability	5
	2) Visibility (Height on pin, etc.)	5
	3) Proper data on labels	15
c.	Spreading & Pointing (10 pts.)	
	1) Spreading (10 pts. for 1st year collection - no pointing required)	5
	2) Pointing (using points or minuten pins)	5
5.	Arrangement, Neatness & Conditions of Insects (5 pts.)	<u>5</u>
	TOTAL	100
6.	Evaluator Bonus	5
	Bonus points will be given for collection where performance beyond above requirements has been shown.	
	TOTAL POSSIBLE	<u>105</u>

*All specimens identified to genus or species should be accompanied by name of source used in identification. This should be *placed on the identification label, on a separate label, or on a small card placed inside the collection box.*

*No 4-H project records or loose papers (outside box) should accompany Group A collections.

GROUP B

(Advanced Insect Collections)

	Points
1. Proper labeling of specimens	40
2. Correct identification of both insects and plant Material where applicable	25
3. Educational value	15
4. Proper preparation of specimens (pinning, setting of wings, pointing, etc.)	10
5. Originality of project and exhibit method, arrangement, etc.	<u>10</u>
TOTAL	<u>100</u>

Class No.

8. ENTOMOLOGY OPEN CLASS

- Class is an option for exhibits deemed by the County Youth Educator to be worthwhile but fall outside the categories described above. The decision to bring such exhibits is left to the discretion of the Extension 4-H educator.

9. HONEY BEE/APICULTURE EXHIBITS

- Honey – 1 pound container
- Bee/Honey products made from Beeswax – Examples: candles (at least 2), lip wax
- Display/Poster – Individual or Group – a series of posters/photos or three dimensional exhibit representing any aspect of Beekeeping. Examples: equipment, disease, bee colony management.
- Project Record Book for 4-H Beekeeping Project.
- See Group E for live exhibits. Exhibitor will be responsible for care and supervision of any live exhibit.

