

Town & Country

February
2018

Cornell Cooperative Extension of Essex County

P.O. Box 388, Westport, NY

518-962-4810

In This Issue

4-H News & Calendar	1-7	Snow Care	17
Master Gardener News	7	February Garden Tips	18
ECSWD Annual Tree & Shrub Order	8-11	Calendar	19
Events, Announcements & News	12-17		

The new 4-H STIC club exploring aerodynamics



Cornell Cooperative Extension in Essex County provides equal program and employment opportunities. Please contact the Cornell Cooperative Extension of Essex County office if you have any special needs.

<http://essex.cce.cornell.edu/>



Cornell University Cooperative Extension

Essex County
Cooperative Extension Center
3 Sisco Street
P.O. Box 388
Westport, NY 12993-0388

Tel: 518 962-4810
Fax: 518 962-8241
E-mail: essex@cornell.edu
<http://essex.cce.cornell.edu/>
www.adirondackharvest.com
<http://nnyrap.cce.cornell.edu/>
<http://enych.cce.cornell.edu>

BOARD OF DIRECTORS

Jay White, President	Barbara Dwyer, Treasurer	Florence St. Pierre Sears
Tami Bushey	Ann Lamb	Steven Ives
Paul O'Connor, Cornell Specialist	Charles Harrington, Supervisor Rep.	Jori Wekin
Mike McCutchan	Dan Rivera	Heather Reynolds

AGRICULTURAL PROGRAM COMMITTEE

Gary Goff, Chair	Erik Leerkes
Diane Dodd	Andrea Connor
Florence St. Pierre, Bd. Rep.	Marco Turco
Haley Severance	

QUALITY OF LIFE PROGRAM COMMITTEE

Dave Wyant, Chair	Darlene Gough
Kathy Bogdziewicz	Randy Roy
Tom McNally	Dan Rivera, Board Representative
Cassidy Roy	Lauren Gough

Executive Director

Rick LeVitre — Phone Ext. 403 – ral334@cornell.edu

Quality of Life Issue Leader, 4-H, Horticulture

Linda Gilliland – Phone Ext. 416 – llg46@cornell.edu

Agriculture Resource Educator

Carly Summers, Ph.D. – Phone Ext. 409 – cfs82@cornell.edu

Nutrition Program Educator

Eileen Longware – Phone Ext. 412 – el252@cornell.edu

Program Educator

Samantha Davis – Phone Ext. 401 – smd242@cornell.edu

Finance Administrator

Laura Nicholson — Phone Ext. 402 – lan25@cornell.edu

Office Manager, Technology

Laurie Davis — Phone Ext. 404 – lsd22@cornell.edu

To reach the CCE
Board Chair, please
use phone Ext. 406.

Amy Ivy Regional Vegetable & Small Fruit Specialist (W) 518-561-7450 (C) 518-570-5991 adi2@cornell.edu

Anika Zuber Regional Dairy Processing Specialist (W) 315-788-8450 adz8@cornell.edu

Betsy Hodge Regional Livestock Specialist (W) 315-379-9192 (C) 315-379-0607 bmf9@cornell.edu

Jim Meyers Regional Grape Specialist (C) 845-417-8005 jmm533@cornell.edu

Kelsey O'Shea Regional Farm Business Management Specialist (W) 315-788-8450 (C) 603-568-1404

Kimberley Morrill Regional Dairy Production Specialist (W) 315-379-9192 (C) 518-564-0498 kmm434@cornell.edu

Kitty O'Neil Regional Field Crops and Soils Specialist (W) 315-379-9192 (C) 315-854-1218 kao32@cornell.edu

Lindsay Ferlito Regional Dairy Production Specialist (W) 315-376-5270 (C) 607-592-0290 lc636@cornell.edu

Lindsey Pashow Regional Direct Marketing Specialist (W) 518-483-7403 lep67@cornell.edu

Mackenzie Waro Regional Livestock Processing Specialist (W) 607-287-1292 mlw55@cornell.edu

Michael Basedow Regional Apple Specialist (W) 518-561-7450 (C) 518-410-6823 mrb254@cornell.edu

Michael Hunter Regional Field Crops Specialist (W) 315-788-8450 (C) 315-778-8602 meh27@cornell.edu

Ron Kuck Regional Livestock/Beef Specialist (W) 315-788-8450 (C) 315-704-8810 rak76@cornell.edu

Tatum Langworthy Regional 6 County Admin (W) 315-788-8450 tlm92@cornell.edu

Building Strong and Vibrant New York Communities

Cornell Cooperative Extension provides equal program and employment opportunities. NYS College of Agriculture and Life Sciences, NYS college of Human Ecology, and NYS College of Veterinary Medicine at Cornell University, Cooperative Extension associations, county governing bodies, and U.S. Department of Agriculture, cooperating.
Please contact the CCE Essex County office if you have any questions or special needs.

Other Agencies at 3 Sisco St.:

Essex County Soil and Water Conservation District
David Reckahn, Lois Sayward, Alice Halloran & Laura Benedict (518) 962-8225
Essex County Agricultural Society (Fair)
(518) 962-8650



4-H connects youth to hands-on learning opportunities that help them grow into competent, caring, contributing members of society.

4-H Leaders and Volunteers Corner

Leaders, Volunteers, Parents, and Guardians are welcome and highly encouraged to join in the program meetings held every other month at the Cooperative Extension building to learn more about the 4-H program. All clubs and Independent members should send an adult to represent them to every meeting as part of the club /membership requirements. Information shared at the meetings is to be distributed to members at the club level meetings.

The **leaders' meetings** happen quarterly from 6-8 pm. We start with a potluck dinner from 6-6:30, 6:30-7 pm will be our business meeting (news & updates), 7-7:30 a round table to share ideas, concerns, possible collaborations, etc, and end the meeting with Volunteer Development topics such as chaperone policy, risk mgmt., fundraising, writing news articles, etc. from 7:30-8:00.

In search of one, two or three brave 4-H leaders, parents, or volunteers to give a Public Presentation on any subject you choose to our 4-H'ers at the **Public Presentation workshop on Tuesday, February 20 from 10 am to noon**. Little Hills Homesteaders' Julie Ives, has volunteered, so has Miss Linda, and you can too! It will be fun she says! Call Linda for more information.

March 27 at 6:00 pm at the 4-H building. **4H Shooting Sports Instructors meeting** – all disciplines, let's plan our shooting sports year! This meeting is for all current 4-H Shooting Sports Leaders of all disciplines. 4-H Shooting Sports Teens are also welcome to attend. Contact Linda for more information. RSVP, please!

Coming Up Soon!

Swim with the Fish! Salmon in the 4-H Building – that’s right! The County-wide 4-H Environmental Science project starts now. Do you like to go fishing? Are you interested in animals and fish? Would you like to meet new friends? Have you ever wondered about Fish Conservation practices? 4-H is the lucky recipient of a tank of salmon eggs. We will raise the fry (baby fish) to “release size” under the guidance of the Essex County Fish Hatchery and Trout Unlimited. 4-H will be working closely with 4-H leader, Tiffany Pinheiro, who is a fisheries and wildlife biologist. If you are interested in a career in Wildlife, Conservation, Biology, or Environmental Science then this is your kind of project! Join the adventure and make new friends as we take a closer look at what it takes to become a Fish and Wildlife Conservationist. All 4-H members are invited and encouraged to take part. Come learn more about raising salmon for release into Adirondack waters. All ages, free program, Contact Linda for more information or to RSVP as a project member. Project notebooks are eligible to become a 4-H fair exhibit.

Feb 6 at 6 pm at the 4-H building – Introduction to the lifecycle of salmon and the history of salmon in the Adirondacks. And don’t forget to take a peek at the fry in our 4-H aquarium.

April 7 at 9:30 am Take part in stocking salmon in the Westport Reservoir under the guidance of Tiffany Pinheiro, Essex County Fish Hatchery Technician. Many hands make light work!

May 8 at 6 pm Take a closer look behind the scenes with a private tour of the Essex County Fish Hatchery located in Crown Point. As our final project piece, we will release salmon into Putnam Creek. Then we will celebrate with a “grill & chill” picnic at the hatchery. Please note that most of the project takes place outside. Dress for the weather - you may get wet so pack extra shoes or warm clothes. For more information, call Linda.

Feb 10 from 1-3 pm: (Small ruminant) Lambing Day

– It’s lambing season at Ben Wever Farm. Come visit the farm at this annual event and snuggle a lamb or two. This is an opportunity to have your questions about sheep husbandry and flock management answered. Geared to 4-H youth, but the curious public is welcome. Free! General Farm tour from 1:00-1:30 – lambing pen visit from 1:30 pm- 3:00 pm. Dress for the weather as this is an outside event. Questions or more information call Linda at 518-962-4810 or at the farm 518-963-7447. Ben Wever Farm, 444 Mountain View Dr., Willsboro.



Feb 20 at 10 am-noon: You’re the Judge! Give your best Public Presentation. If this year will be your first ever PP or you are a seasoned veteran of annual PP, join us for a fun and informative interactive learning session. Come learn tricks and tips to give you your best presentation ever. Join us for a hilarious morning of watching the 4-H leaders give Public Presentations. 4-H youth will be the judges and critique the 4-H leaders on their presentation. Then the 4-H leaders will be given a chance to improve with practice and a repeat performance. Looking for three 4-H leaders to be brave in front of an audience and give a less than 10-minute presentation, 4-H members are also welcome to give a presentation to help us all improve our public speaking skills. Bring your own lunch or snack to the program. Call Linda for more information or to RSVP.

Feb 20 from noon to 1:00 pm: 4-H Club Officer Training – Are you a new Club officer wishing to learn more about your leadership role? Or perhaps you have taken a new officer role and want to improve your skills? Club Officer training will take place following PP practice. Bring a brown bag lunch and learn how to fulfill your leadership roles more effectively, Contact Miss Linda for more information or to RSVP.

Equi-Riders club leader, Laura Generous will host a **Rain Barrel Workshop** over the February school break. The date for the event is **February 22 at 10 am** at the 4-H building. She has a nifty presentation on the history, math and science of why you should add a rain barrel to your landscape. There will be the hands on portion of making a few. The cost is \$5 for lunch or bring your own.

Spring Offerings

Clinton County's 4-H program has invited Essex County 4-H Youth to participate in a **Wood Carving Project**: Bear's Head Popping out of Tree Trunk. This workshop will take place on two Saturdays in **March** and each class will be approximately 2 hours long. This will make a terrific 4-H project. The age is 10 and up for this project. Will be held at CCE – Clinton's office. There will be an online registration, and there will be a small materials fee. Call Chelsea at 518 561 7450 for more information.

Horticulture Club Thursdays, March 1 to May 3 from 5:30 to 7:00 pm at the CCE Westport office. Are you a plant lover? Do you enjoy growing things? Do you like to eat? Curious about decomposition like dung beetles, composting or vermiculture? Are you interested in garden arts and crafts? How about Field Trips? Join the 4-H horticulture club and explore and learn all about it and make new friends! Mistakes will be made, mishaps will occur, let's make mad science! RSVP a must, 4-H'ers must attend a least 6 out of 10 classes to receive certificate. Each class will start out with a light supper/ nutrition piece. Class time will be Thursdays beginning March 1st through May 3rd from 5:30 to 7:00pm. Contact Linda for more information.

May 19 **"Standardbred" Day** and general horse clinic, more details to follow. 4-H horse project educational clinic. There will be a variety of events to take part in both mounted and unmounted so no horse required. Activities may include a handwashing hygiene, breakfast, safety video, horse first aid kits, vital signs, horse treat, hippology station, equine parasite management, Horse & rider evaluation station, Standardbred presentation and lunch. More details to be announced. Contact Linda if you would like to volunteer.



WILD EDIBLES! Just an advanced teaser from Pat Banker! She will be hosting a "4-H Wild Edibles" class. This is an exciting new 4-H curriculum! In order to teach it or use it in your club you must attend a Train the Trainer session. If your group or family are interested in History, Horticulture, Environmental Science, Hiking, etc. consider this opportunity. If this interests you **SAVE THE DATE:** May 26 at Camp Overlook. The cost is a remarkable \$20 for staff, 4-H Leaders, 4-H teens, & MGVS. There will more information to follow. If you want you can even stay at Camp Overlook the night before, what a great way to experience a beautiful 4-H camp! There will be an Open to the Public workshop on Saturday, if you would like to attend that there will be a \$20 discount for anyone who attended the Friday workshop. In addition, there will be a late summer/fall session for the curriculum in September.

Summer Fun

Dog Days of Summer July 10, 17, 24 & 31 – Tuesday evenings from 6 pm to 7 pm at the 4-H building/ fairgrounds. Do you have a dog that you would like to spend more time with? Is your family considering adding a new member of the family? Do you want to adopt a dog or so you have your heart set on a specific breed and are considering professional breeders or are you considering a new canine? In this dog project you will learn about your canine companion. Come explore the world of dogs. We will also learn a bit of basic obedience. Open to all 4-H members. Not necessary to have a dog. If you plan on bringing your dog, pet must have current rabies and distemper – proof from your veterinarian is required. Call Linda for more information.



4-H Club News



Does your 4-H club have news to share? 4-H Club Secretaries or News Reporters should submit their club's report and photos by the 10th of the month for it to be included in the following month's Town & Country. Send to office via email to Samantha Davis smd242@cornell.edu, fax 962-8241 or by mail addressed to 4-H Team, 3 Sisco St. Suite 1, P.O. Box 388, Westport, NY 12993.

The Coyote Ridge Riders have been enjoying the cold, snowy weather! We love to ice skate, build snowmen and go sledding. Westport has a wonderful skating rink this year so we have been taking advantage of that. Our special needs friends have been coming on Wednesdays to participate in inside activities such as balancing exercises, learning equine and tack terminology and learning about various horse disciplines. Thursday, January 11 was our annual Coyote Ridge Riders winter swim day at the Comfort Inn water park in Plattsburgh. We enjoyed pizza, veggies, cookies and assorted drinks afterward. Lydia doesn't totally let her horses have the winter off, especially when it isn't finger numbingly cold out. She's been doing some groundwork and flexing exercises with Dakota and Charlie particularly. Interspersed amongst these activities has been a lot of studying for horse bowl and hippology, which goes well with hugging up to the woodstove and drinking hot chocolate!!





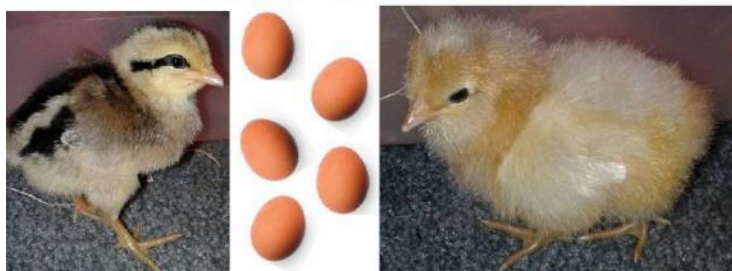
Looking for that special show trio, but don't want 12 others? Here is your chance to order a few chicks, poults, ducklings, goslings, keets, and more! Place your order with us for combined discounts.

Place your order by February 2nd, at 3 P.M. to get in on this amazing opportunity! Get your selection into Laura (email lbenedict@westelcom.com, call or text 518-524-2848) by the above date. We will be ordering from Murray McMurray Hatchery (<http://www.mcmurrayhatchery.com/index.html>), with delivery intended for the 1st week of May.

Questions? Contact Laura or Linda (email llg46@cornell.edu, call 518-962-4810)

How to order:

1. Pick out your chicks and estimate your costs
 - Cost should include chicks, vaccines per chick (required) and cost for shipping
2. Get your selection in to Laura with a deposit equal to the cost of chicks and vaccines by February 2nd.
3. Once all orders are in, we will contact you with the remainder you owe and are required to pay at time of pick up.
4. Wait for May to pick up chicks on delivery day!



MARK YOUR CALENDARS

To find out more information for the upcoming events, contact Linda at llg46@cornell.edu or Samantha Davis smd242@cornell.edu Please note this calendar is a work in progress and some events may have the dates & time altered. To confirm events, dates and times contact the office. New this year: we will incorporate online event registration. 4-H programs held at the 4-H building unless otherwise stated.

February

- 2: by 3:00 pm. 4-H Poultry Project chick order is due, please refer to flyer in this issue of Town and Country for details – Order now, spring chicks will be delivered in May TBA. Please note that you do not need to be a 4-H member to join this order if you only want a small number of special chicks for your home flock or show birds for County Fair.
- 3: Horsebowl & Hippology, 10:00am, contact Laura Generous at 518-524-2848.
- 6: #1 Salmon project meeting: Introduction to Salmon lifecycle and history of Conservation, see description. 6:00-7:00 pm at CCE building
- 9: 6pm-7pm 4-H Bluegrass Club Members & Volunteer Musicians meet the Peru Free Library at 3024 Main St in Peru
- 10: 4-H Lamb Day at Ben Wever Farm see description. 1:00-3:00 pm
- 20: You are the Judge! 4-H youth will judge 4-H adults giving a Public Presentation and learn tricks and tips on how to effectively give a 4-H PP! 10:00 am-noon
- 20: 4-H Officer training Noon to 1pm.
- 22: Rain barrel workshop at the 4-H building at 10 am.
- 26: Organizational meeting of new Horticulture Club at 6 pm at CCE building. Project begins in March

March

- TBA: Wood Carving project will take place on 2 consecutive Saturdays each for 2 hours at CCE – Clinton's office. There will be an online registration, small materials fee per participant.
- 1: Horticulture Club meeting #1 of the 10-week project. Meet at the 4-H building at 5:30-7:00. Pre-registration a must, project group size limited, hands on skill building and career development.
- 9: 6pm-7pm 4-H Bluegrass Club Members & Volunteer Musicians meet the Peru Free Library at 3024 Main St in Peru
- 18: Cupcake Wars – Rascals 4-H Club again sends out a challenge for the 4th year to any 4-H youth team who would like to compete! There will be a potluck dinner for all the 4-H teams at the conclusion of the Cupcake Wars. Bring a dish to share. Contact Linda for more info. 4-6 pm.
- 19-23 Ag Literacy Week, the book title is Before We Eat: From Farm to Table by Pat Brisson. If you would like to be a volunteer reader at your school contact Linda
- 24: Annual Public Presentations – a foundation piece of the 4-H program - will be held at the Westport Central School. NOTE THE DATE CHANGE!**

April

- TBA: NYS Horse Quiz Bowl and NYS Dairy Quiz Bowl
- 7: #2 Salmon Project meeting -Stocking salmon in the Westport Reservoir. 9:30 am.
- 11-22: Tractor Supply Company 4-H Paper Clover Spring Campaign, support your local Tractor Supply in Essex County Ti & Raybrook
- 13: 6pm-7pm 4-H Bluegrass Club Members & Volunteer Musicians meet the Peru Free Library
- 14: Make up Public Presentation Day at Tractor Supply in Ticonderoga or Raybrook – Note different location this year! Contact Linda for more information and must be preregistered. 11:00 am

May

TBA: Annual Animal Crackers held at Cornell University

TBA: Annual Capital Days trip to Albany

TBA: 4-H spring chicks will be delivered

8: #3 Salmon Project meeting – Release of Salmon into Putnam Creek, tour of fish hatchery and picnic celebration of project conclusion! 6:00 pm.

11: 6pm-7pm 4-H Bluegrass Club Members & Volunteer Musicians meet the Peru Free Library at 3024 Main St in Peru

19: 9am – 3pm NYAgriculture Horse Breeders Development Fund Day (Standardbred Day) Join us for a fun filled equine educational day, open to all enrolled 4-H youth

26: Wild Edibles with Pat Banker at Camp Overlook, open to all enrolled 4-H, leaders, volunteers, parents, and 4-H teens 13 and up

June

TBA: University U and Focus for Teens trip to Cornell University

July

10, 17, 24, & 31 6:00-7:00 pm Tuesday evenings at 4-H building, July Dog Days of Summer – see description about 4-H Dog Project

October

TBA: 4-H ABC (Ag Business Career) Conference at SUNY Cobleskill

MASTER GARDENER NEWS

The mission of the Master Gardener Volunteers is to train volunteers to teach others how to protect the environment and grow plants more effectively.



Master Gardener Volunteers joined their counterparts from Clinton County for a recent holiday gathering. The MGV brought a donation of shelf stable food items for the Westport Food Shelf. The town's food shelf was very appreciative as the Food Shelf volunteers identified 25 families in need for the Holiday season within the community. If you have an idea or topic you would like to learn more about for your garden in the future contact the office. MGV regular monthly meeting dates are the second Friday of the month from 10:00 am to noon, at CCE-Essex County in Westport unless otherwise designated.

Anticipated calendar of events: The public is encouraged to attend! Free unless noted. Call if you have an idea or interest!

February

22: Laura Generous will host a rain Barrel workshop over the February school break. She has a nifty presentation on the history, math and science of why you should add a rain barrel to your landscape. There will be the hands on portion of making rain barrels. The cost is \$5 for lunch or bring your own.

March

17-18: Maple Weekend Lake Placid

24-25: Maple Weekend Lake Placid

May

26: Wild Edibles at Camp Overlook with Pat Banker. See workshop description under the 4-H heading

June

16: MGV Perennial Plant sale and Garden Advice Clinic, Lake Placid

For Office Use: Receipt #

Check or MO #

Order #

2018 Tree and Shrub Order Form

Order Deadline March 23, 2018

Pick Up April 20, 2018

Orders will be taken up to the day of the sale, but varieties may be limited. Order early!

Name: _____ Weekday telephone: _____ E-mail: _____



	Species	Age	Zone	Soil	Rate	Sun	10/\$20	50/\$80	100/\$130	Quantity	Total	
C o n i f e r s	Balsam fir	3-2	3 to 5	M	S	PS						
	Colorado blue spruce	2-2	3 to 7	WD	SM	Sun						
	Douglas fir	2-2	3 to 6	WD	M	Sun						
	Eastern white pine	2-2	3 to 7	WD	F	Sun						
	Frasier fir	3-2	4 to 7	WD	S	Sun						
	Northern white cedar	2-2	3 to 7	M	S	Sun						
	Species	Size	Zone	Soil	Rate	Sun	10/\$15	50/\$50	100/\$80	Quantity	Total	
D e c i d u o u s	American cranberry	15"	2 to 7	M	M	Sun						
	Arrowwood	20"	3 to 8	WD	M	Sun						
	Black Walnut	15"	4 to 9	M	F	Sun						
	Butterfly bush	10"	4 to 9	WD	F	Sun						
	Buttonbush	15"	3 to 11	W	M	Sun						
	Elderberry	15"	3 to 9	M	F	Sun						
	Lilac	15"	3 to 7	WD	M	Sun						
	Serviceberry	10"	3 to 7	M	M	Sun						
	Sawtooth oak	20"	5 to 9	WD	M	Sun						
	Sugar maple	15"	4 to 8	WD	S	S						
	Sycamore	15"	4 to 9	M	M	Sun						
	Species		Zone	Soil	Rate	Sun	2/\$30				Quantity	Total
S p e c i a l s	Apple (Liberty and Honeycrisp)		3 to 6	WD	M	Sun						
		Size					10/\$25					
	American hazelnut	15"	3 to 9	M	F	Sun						
	American plum	15"	3 to 8	WD	M	Sun						
	Nanking cherry	15"	3 to 7	WD	F	Sun						
		Age					10/\$30					
	Blackberry (Darrow)	1-0	5 to 8	WD	F	Sun						
	Blueberry (Blue Ray and Jersey)	1-0	3 to 7	M	S	Sun						
	Raspberry (Heritage Red)	2-0	5 to 9	WD	F	Sun						
	Streamco Willow	0	2 to 6	M	F	PS	\$0.25 each or 100/\$20					
	PACKETS	2 of each seedling per packet							10/\$15			
	Wildlife	oak, serviceberry, walnut, elderberry, hazelnut										
	Riparian	willow, sycamore, buttonbush, elderberry, cedar										
	Pollinator	butterfly bush, lilac, cranberry, arrowwood, cherry										
Page Total												

More items on back! Groundcover, wildflowers, fertilizer,



water gel, flags



**No sales tax on

this side

*Key on next page

ALL ITEMS ON THIS PAGE ARE TAXABLE

	Groundcover	Price	# Ordered	Total
	Pachysandra (rooted cuttings, pack of 50)	\$25		
W i l d f l o w e r s	Seed Mix (4 oz bag)			
	Original	\$12.5		
	Shady	\$12.5		
	Sunny	\$12.5		
	Bird and Butterfly	\$12.5		
	Enviro-friendly	\$12.5		
	Annual	\$12.5		
O t h e r	Wire flags (to mark planting locations)	10/\$1		
	Water gel	\$3		
	Fertilizer tablets	10/\$1.5		
		100/\$13		
	Planting bar	\$50		
		Page Total		
**Items on this page only!		8% Sales Tax		
		Page 1 Total		
		Order Total		

Key	
Soil	
M	Moist
WD	Well drained
Rate (Growth)	
S	Slow
MS	Moderate slow
M	Moderate
MF	Moderate fast
F	Fast
Sun	
Sun	Full sun
PS	Partial shade
S	Shade

Please return completed forms to:

Essex County Soil and Water Conservation District
P.O. Box 407, 3 Sisco Street
Westport, NY 12993

Questions? Contact us!

(518) 962-8225

essexswcd@westelcom.com

Check out the descriptions in

color on our website!

<http://www.essexcountyswcd.org/>

- Please make checks or money orders payable to: Essex County SWCD
- All orders must be PREPAID.
- There may be extra trees available to purchase the day of the sale.
- Our office is located in the Essex County Youth, Agriculture, and Natural Resources Building (formerly Essex County Cornell Cooperative Extension Building) on the Essex County Fairgrounds in Westport.
- Order pick-up will be April 20, 2018 at Floral Hall at the Essex County Fairgrounds, Westport.
- Pick-up reminders will be sent out to you in early April by e-mail or phone.
- Essex County SWCD will not be responsible for the success or failure of your plantings.
- All trees and shrubs sold are to be used in effective conservation practices and will not be planted for ornamental uses only.
- Trees, shrubs, and groundcovers will not be removed for resale with roots attached.
- The Essex County SWCD reserves the right to refund payment if an item is unavailable.



Descriptions for Items on Essex County Soil and Water Conservation District's Tree and Shrub Order Form 2018

Conifers

Cedar, White- *Thuja occidentalis*, zone 3. Height 20-50'. Leaves are dark green, yellowish beneath. When crushed, give off a smell of apples. Cones ripen the following autumn, about ½" long with 8-10 scales.

Fir, Balsam- *Abies balsamea*, zone 3. Height 40-80'. It is one of the more important conifers in the northern United States. Wildlife relies extensively on this tree for food and shelter. Leaves are dark green with lighter undersides.

Fir, Douglas- *Pseudotsuga menziesii*, zone 4. Height 40-80'. Leaves are densely set, needle-like with blunt tips and have a strong fruity fragrance.

Fir, Fraser- *Abies fraseri*, zone 4. Height 30-40'. A narrow, pyramidal tree with glossy, dark green needles. The undersides of the needles have two white rows. Not suited for hot, dry sites, prefers moist, well-drained sites.

Pine, White- *Pinus strobus*, zone 3. Height 50-80'. Has soft, blue-green needles. Growth is rapid at first but slows down with age. Prefers sunny locations and tolerates most moist, well drained soils. Seeds are relished by many varieties of wildlife.

Spruce, Colorado Blue- *Picea pungens*, zone 2. Height 30-60'. Brilliant blue-green needles with a stately pyramidal shape. Makes a magnificent living screen. Birds love the dense branching for nests and cover.

Deciduous

Apple, Honeycrisp- *Malus domestica* 'Honeycrisp', zone 3. Height 12-15'. These apples are super sweet with a crisp crunch. The trees themselves tend to be compact. Mid-blooming flowers provide pollinators with an excellent source of nectar. Semi-dwarf rootstock.

Apple, Liberty- *Malus domestica* 'Liberty', zone 3. Height 10-20'. Natural disease resistance makes this an easy growing apple. Sweet to tart fruit that has a nice crunch will please the tastebuds. Semi-dwarf rootstock.

Arrowwood- *Viburnum dentatum*, zone 3. Height 3-9'. This adaptable shrub can be used just about anywhere. It gets its name from the arrows that were made from its wood. Berries attract wildlife and provide color.

Black Walnut- *Juglans nigra*, zone 4. Height 50-70'. Wildlife relishes nut harvest every 2-3 years and wood is revered for many products. Straight trunk with large crown provides excellent shade.

Blueberry- *Vaccinium* 'Jersey', zone 4. Height 4-6'. This hardy shrub is very productive. The dark green leaves are striking. Birds and other wildlife enjoy the mid-summer crop that is produced. Blueberries love acidic, moist to wet soils.

Blueberry- *Vaccinium* 'Blue Ray', zone 4. Height 6-12'. This hardy shrub is a berry producer. It is one of the most widely planted varieties. Wildlife of all sorts enjoy the late berry production this variety offers. Blueberries love acidic, moist to wet soils.

Blackberry- *Rubus darrow*, zone 5. Height 2-5'. Produces large black fruit that is firm, fleshy and sweet. Will produce over a long period of time. It is a very hardy and heavy producer. The root systems have great soil holding capacity.

Cherry, Nanking- *Prunus tomentosa*, zone 3. Height 6-10'. The beautiful exfoliating bark and fragrant flowers aren't the only great thing about this small tree! The fruits are relished by many forms wildlife and pollinators enjoy the early bloom that is produced.

Raspberry- *Rubus latham* 'Heritage Red', zone 4. Height 3-5' with dark green foliage on an upright bush. Produces bright red berries. Bloom time late spring, fruit begins to ripen in mid-summer. Full sun required.

Butterfly Bush- *Buddleia davidi*, zone 4. Height 5-12', multi-stemmed shrub. Fragrant flowers July through fall. Attracts butterflies, hummingbirds, and honey bees. Should be heavily pruned in spring and tolerates most soils.

Buttonbush- *Cephalanthus occidentalis*, zone 3. Height 10-12'. A multi-stemmed wetland shrub. Flowers are unique, round clusters with pointy, protruding spikes. Maybe it can teach Fido to "play dead" as it leafs out much later than most other shrubs.

Cranberry, American- *Viburnum trilobum*, zone 5. Height 8-12', multi-stemmed shrub. White flowers in May. Bright red fruit from September to February. Attracts birds and berries are commonly used for jellies.

Elderberry- *Sambucus Canadensis*, zone 4. Height 5-12', multi-stemmed shrub. White flowers in mid-June and purple fruit appears mid-August. Fruit is edible and enjoyed by wildlife. Tolerates most soils and roadside conditions.

Hazelnut, American- *Corylus americana*, zone 3. Height 8-15'. A multi-stemmed shrub that produces a wildlife loving nut. A great riparian plant, this shrub will spread with root suckers to help stabilize eroding banks.



Lilac- *Syringa vulgaris*, zone 3. Height 8-12'. A leggy, upright shrub. Fragrant flowers bloom in mid-May. Good density provides cover for birds and mammals. Best on moist to dry soils. Full sun required.

Maple, Sugar- *Acer saccharum*, zone 3. Height 50-75'. Spreading canopy. Prefers well-drained soils. Brilliant fall leaf color and pleasing growth habit. When it gets older, it's sap can be boiled down to make delicious syrup!

Plum, American- *Prunus Americana*, zone 4. Height 15-25'. White flowers developing into red to yellow fruit. Intolerant of shade and drought. Good for wildlife cover and food. If you haven't been lucky with a green thumb, this is one fruit tree that tends to thrive on neglect!

Oak, Sawtooth- *Quercus acutissima*, zone 5. Height 40-60'. Dense, spreading branches. This is one of the fastest growing oaks, becoming a wide spreading, tall tree. Acorns produced in fall are a favorite of wild turkey. Drought tolerant.

Serviceberry- *Amelanchier canadensis*, zone 3. Height 6-20'. Erect, multi-stemmed small tree. White flowers in April with fruit ripening in June, enjoyed by birds. Thrives in moist, well-drained acidic soils. Full sun to partial shade.

Sycamore, American- *Platanus occidentalis*, zone 4. Height 70-100'. Fast growing tree with a unique bark. Does well on moist to wet sites and is great for reclaiming various sites.

Willow, Streamco- *Salix purpurea* 'Streamco', zone 3. Height 10-20'. This quick growing shrub is perfect for stream banks and windbreaks. The dense stemming reduces wind velocities and the branches actually bend in rough waters. Several varieties of wildlife enjoy this shrub.

Packets

Wildlife- Feed the wildlife naturally year round, and maybe snag a few treats for yourself.

Riparian- Protect your wet areas from erosion with dense roots and wet loving plants.

Pollinator- Flowering plants attract a wide variety of insects and birds, creating a pollinator paradise.

Groundcover

Pachysandra- *Pachysandra terminalis*. Height 1'. Trailing evergreen. Spikes of snowy flowers in April. At its best in shade and acidic soils. Good cover under trees and shrubs.

Wildflower Seed Packets (4ounce bag) Coverage's are approximate

Annual- covers 850 ft² for new seedings; 1,700 ft² for over-seeding. Designed specifically to brighten mature wildflower plantings, bringing back the range of colors that may be lost by natural selection. This all annual blend of varieties includes plants that bloom quickly, colorfully and profusely.

Bird and Butterfly- covers 1,350 ft². The flowers in this blend attract pollinators all summer long. The heavy reseeding annuals act as a natural food source for songbirds all winter.

Enviro-Friendly- covers 1,350 ft². A balanced blend of flowering herbs and wildflowers that is designed to attract beneficial insects

and desirable birds and help deter garden pests. Great for borders or as a standalone planting.

Original- covers 2,500 ft². A balanced blend of perennial and annual species designed to perform in a wide variety of growing conditions with a full spectrum of color and bloom times.

Shady- covers 1,200 ft². Designed for lower light conditions but will perform in full sun also. Will not tolerate dense shade, but does well with dappled or part day sun exposure.

Sunny- covers 2,500 ft². This mix lends itself to full sun and drier conditions with a full spectrum of color.

Other Items

Slow Release Fertilizer Tablets (20-10-5)- These compact, easy-to-use tablets eliminate the need for measuring small quantities of dry materials. Provides a safe, scientifically complete plant food which feeds for up to two years.

Water Gel- The dry gel should be mixed with water to create thick slurry. Plant roots should be dipped in and out of the mix immediately prior to planting or carried to the planting site in a bucket of the mix. Water gel will retain the moisture around the roots at planting time and for several months.

Pictures in order listed. Check out the color version online at [http://www.essexcountyswcd.org/!](http://www.essexcountyswcd.org/)





UPCOMING EVENTS & HAPPENINGS

Please contact the CCE Essex County Office (962-4810) if you have any special needs

LOCAL

<p><u>Dairy Reproduction and AI Training</u> Thur/Fri, February 1 & 2 Adirondack Farms 193 Brown Rd., Peru</p>	<p>Attend this 2-day training course to become trained in dairy reproduction and artificial breeding techniques. There will be classroom sessions in the morning, followed by hands-on practice on farm in the afternoon. After this class you will be trained to artificially inseminate your own herd. Speakers: Erika Cameron and Allison Wood, Genex. Cost: \$150 per person. Includes materials and lunch both days. Class capped at 15 participants. Must attend both days. To learn more contact Lindsay Ferlito at 607-592-0290, LC636@cornell.edu</p>
<p><u>Horse-Drawn Sickle Bar Mower Repair Workshop</u> Saturday & Sunday, February 3 & 4 9:00am to 4:00pm RRF, 1699 Jersey St., Essex</p>	<p>Fix up your mowing machine to get ready for hay making next summer or just come to learn about mower repair and maintenance. This workshop will be led by Donn Hewes of Donn's Mower Shop. The work will be collaborative as we learn from each other and each mower we work on. Come join the folks at Reber Rock Farm and other fun horse farmers for the weekend. Registration will include a lunch each day. Click here to register (https://www.draftanimalpower.org/2018-horse-drawn-mower-rendezvous/) Price: \$60 to bring a mower (does not include parts). \$30 to audit (definitely expect to get your hands dirty). Any questions, please contact Donn Hewes 607-849-4442 or tripletree@frontiernet.net</p>
<p><u>Pesticide Recertification Course</u> Tuesday, February 6 CCE, Clinton Office 6064 Route 22, Plattsburgh OR Wednesday, February 7 CCE, Essex Office 3 Sisco St., Westport 10:00am to 12:00pm and 1:00pm to 3:00pm</p>	<p>No matter what category your license is in, your recertification credits must be 25% in your category. The other 75% can be core OR category. We are offering CORE credits in Entomology, Weeds, IPM and Pesticide Safety. IMPORTANT – Categories 1-13 are on a 3-year cycle. Categories 21-41 are on a 5-year cycle. Check the DEC website for more information. Cost is \$10 for the morning session and \$10 for the afternoon session (2 core recertification credits per session). For more info contact Sara Bull at 518-561-7450 or slk95@cornell.edu Sign up at https://reg.cce.cornell.edu/PesticideRecertification_209</p>

<p><u>Finance Office Hours</u> Thursdays, February 8, March 1, & April 5 10:00am to 2:00pm Hub on the Hill 545 Middle Road, Essex</p>	<p>Stop by <u>any time</u> to get some one-on-one or small group guidance on your farm's records and finances! These office hours are open to any type and size of farming operation, are question and answer format and are FREE! So bring your computer and your questions and stop by to get the resources you need to start the year off right with your books nice and clean! Lead by Kelsey O'Shea, Farm Business Management Specialist with the CCE North Country Regional Ag Team. Info on: accounting methods/software, setting up chart of accounts, basic accounting and tax questions, how to complete monthly and annual budgets, enterprise analysis, and more!</p>
<p><u>Principles of Biological Systems</u> Sunday & Monday February 11 & 12 Whallonsburg Grange Hall 1610 NY-22, Essex</p>	<p>Explore how a renewed focus on qualities industrial agriculture forgot – flavor & nutrition – can transform our food system to better serve people and the planet. To register, visit http://bionutrient.org/site/workshops. Thanks to a generous donor, partial and full scholarships are available from the Essex Farm Institute for farmers wishing to register for the workshop. Scholarships are available on a first come first served basis. Farmers from the Adirondack Region and Western Vermont with 10 years or less experience will be prioritized. To apply send the following information to essexfarminstitute@gmail.com Name, Farm Name, location and contact (email, website, Facebook page, etc), Your role on the farm, Number of years of farming experience.</p>
<p><u>Log-Grown Shiitake: Economics and Management for a Profitable Crop</u> Saturday, February 17 9:00am to 4:00pm Whallonsburg Grange Hall 1610 NY-22, Essex</p>	<p>Anyone who a resident of New York State or who farms in New York and is growing commercially, starting a new enterprise, or considering commercial production is welcome. The workshop will cover aspects of production important to selling mushrooms in NY, including safety, sanitation, marketing, and regulations. Those who attend one of the workshops or the online livestream are eligible to participate in an advanced training group and receive one-on-one support for the 2018 growing season, details at the workshop. To Register: visit www.cornellmushrooms.org/viability Cost: \$30/person includes lunch and handouts. (online livestream 3/2 is \$20) (no person turned away for lack of funds - contact sfg53@cornell.edu for info.)</p>
<p><u>Small Scale Commercial Value-Added Dairy Production</u> Tuesday, February 20 10:00am to 2:00pm CCE, Clinton County 6064 NY-22, Plattsburgh</p>	<p>This presentation will introduce you to the ins and outs of small-scale cheese, yogurt and other value-added dairy production. We'll be covering: How to get started, Funding opportunities, Examples of value-added businesses. \$15/person (\$20 for two members of the same family). Light lunch included. Register by calling Sara Bull at 518-561-7450 or register online at https://reg.cce.cornell.edu/SmallScaleValueAdded_209 Pre-registration is required!</p>

<u>Feed Back: Growing and Sharing the Abundance</u> Thursday, March 1 8:00am to 6:00pm The Wild Center 45 Museum Drive Tupper Lake	FIRST NORTH COUNTRY FOOD JUSTICE SUMMIT On March 1st, 2018, farmers, business owners, farm workers, nonprofit leaders, government agencies, schools and institutions, and community members will come together at the Wild Center in Tupper Lake, NY. Together we'll address our region's issues of accessibility, inclusivity, nutrition, and justice from field to fork. Visit http://www.essexfarminstitute.org/event/feed-back-growing-sharing-abundance/ for more info
--	---

REGIONAL

<u>Growing Alliums for Storage & Long Term Sales</u> Thursday, February 8 9:30am to 3:30pm CCE Saratoga 50 West High St. Ballston Spa, NY	This will be an interactive meeting facilitated by CCE's ENYCHP vegetable specialists plus a grower panel. Key topics: Growing practices that lead to good storage, tips and tricks for harvest, drying and storage, and ample time for audience questions about garlic, leeks, onions, and shallots. \$30 registrations for enrolled ENYCHP members or \$35 for non-enrolled. Includes lunch and informational materials. To register online go to https://enych.cce.cornell.edu/event.php?id=880
<u>4th Annual Hudson Valley Value-Added Grain School</u> Friday, February 9 8:30am to 3:30pm Pegasus Restaurant 10885 Rte 9W, Cossackie, NY	Theme: Supplying Local Grains to Local Artisan Bakers. Our three main speakers have been part of the local grain economies in Quebec, Vermont, and New York and have years of experience in producing, milling, and baking with local grains, as well as with small-scale grain machinery. They will address these topics as well as what it takes to build a local grain economy. Topics: Developing a Local Grain Economy, Baking Breads with Locally Produced Flour, Crop Insurance, Growing Organic Grains for the Local Market, How Grain Quality is Affected by Soils, Soil Fertility, and the Environment, The Ancient Grains – A New Taste and Small-Scale Equipment. For all event details and registration: tinyurl.com/2018-Grain-School
<u>NOFA-VT Winter Conference</u> Sun-Tues., Feb. 18-20 University of Vermont Davis Center 590 Main St. Burlington, VT	Beyond Borders: Our Role in the Global Food Movement. The NOFA Vermont Winter Conference is a highlight of the winter for farmers, gardeners, homesteaders and enthusiastic eaters. Please join us—and 1,200 of your fellow organic food enthusiasts—for three days of learning, inspiration, good food, great conversation, and community building. Flip through the program below, or click on the links to the left for full details about the conference. Questions? Call us at (802) 434-4122 or email winterconference@nofavt.org .
<u>2018 Eastern NY Fruit & Vegetable Conference</u> Tue./Wed. Feb. 20 & 21 Desmond Conference Ctr 660 Albany Shaker Road Albany	This two-day conference combines all of ENYCHP's traditional fruit and vegetable meetings into one large event in the Capital Region. Sessions will include two full days of tree fruit programing, one day of vegetable programing, a half day berry session and a half day business management session. Register before February 13th for a reduced rate! Hot Lunch and admission to the trade show are included with the registration fee. DEC Credits will be available in the Tree Fruit, Vegetable, and Small Fruit Sessions. Register at https://enych.cce.cornell.edu/event.php?id=881

<u>AgrAbility</u> <u>National Training</u> <u>Workshop</u> March 19-22 Westin Portland Harborview Hotel Portland, Maine	Save the date for the premier training event addressing issues of disability in agriculture. Professionals and consumers from all over the country will participate in four days of plenary sessions, breakouts, tours, networking, and special events. For questions, please contact Goodwill partners to the National AgrAbility Project: Tess McKeel, 585-447-9015 or tmckeel@goodwillfingerlakes.org
---	---

The **Farmers Market Legal Toolkit** is an online resource designed to support farmers' markets throughout the U.S. by providing market managers with open-source legal tools. This Toolkit will help farmers market leaders build and grow resilient and accessible farmers' markets in their communities, while planning proactively to minimize their market's legal risk. To explore the Toolkit, visit www.farmersmarketlegaltoolkit.org. The Farmers Market Legal Toolkit is a four-year collaboration among the Center for Agriculture and Food Systems at Vermont Law School (CAFS), the Northeast Organic Farming Association of Vermont (NOFA-VT), and the Farmers Market Coalition (FMC). Funding is generously provided by the National Institute of Food and Agriculture at the U.S. Department of Agriculture. The Toolkit was created in response to recurring questions from market managers. It is built around the three most common legal issue areas that markets encounter: understanding business structures, accepting SNAP benefits, and managing risks. This online Toolkit provides legal resources, best practice recommendations, and case studies on enhancing market governance structures, accepting SNAP benefits, and managing common risks. Market leaders can use these legal tools to clarify responsibilities and expectations of markets, their vendors, and host sites, among others.

Webinar: Want to learn how to use the Toolkit? Join us for a Webinar on the Farmers Market Legal Toolkit to learn about legal resources, best practice recommendations, and stories from other markets.

Webinar Date/Time: **Thursday, February 1, 12:00-12:30 PM**

Register here: <https://attendee.gotowebinar.com/register/7748182962671476994>

FREE WEBINAR: Renewable Heat NY

Control Concepts for Cordwood Gasification and Pellet Boiler Systems. **Tuesday, February 20, 1:00PM - 2:00PM.** Biomass boilers are meant to operate with long run cycles, much longer than conventional boilers. This webinar shows how to use simple but unique control concepts, in combination with thermal storage, to achieve long run cycles, high efficiency, and low emissions. Topics discussed will include outdoor reset control of the pellet boiler "on" condition, temperature stacking in thermal storage, simultaneous operation of pellet boilers and auxiliary boilers, and heat delivery to low temperature heat emitters. To register go to:

<https://nyserda-events.webex.com/mw3100/mywebex/default.do?siteurl=nyserda-events>

Once your registration has been submitted, you will receive a confirmation email with instructions on how to join the event. This webinar is ideal for contractors, engineers, or others wishing to enhance their knowledge of installation best practices for cordwood gasification or pellet boilers. QUESTIONS?

Call or email Molly Bibisi: (518) 465-7085 x142 or bibisim@adgcommunications.com



Are you interested in starting a winery in Northern New York? CCE Harvest New York has put together a report and interactive Excel spreadsheets on Starting a Winery in Northern New York: Winery Establishment Considerations and Costs.

The report provides a general overview of starting a winery in Northern New York. You will find information on current wine sales, markets, winery establishment costs, licensing resources, growing grapes vs purchasing grapes or juice, winery building, and potential financial help resources.

Additionally, we have created Excel spreadsheets to help you determine some start-up costs and considerations. Within the Cost Calculating Spreadsheet, you will find worksheets (tabs along the bottom) for Yield per Vine, Yield per Acre, a Tank Size Calculator (embedded in the Yield worksheets) and Production Establishment Cost. Instructions are provided on the top of each worksheet. NOTE: The spreadsheets can be used for the entire New York wine industry. They are provided as a general idea of the costs associated with establishing or expanding a winery and are not intended as a must-have list or an all-inclusive list. [Starting a Winery in NNY: Winery Establishment Considerations and Costs \(pdf; 2296KB\)](https://harvestny.cce.cornell.edu/uploads/doc_40.pdf) Click on previous or go to [https://harvestny.cce.cornell.edu/uploads/doc_40.pdf](https://harvestny.cce.cornell.edu/uploads/doc_39.xlsx) Cost Calculating Spreadsheets - download (xlsx; 37KB) Click on previous or go to https://harvestny.cce.cornell.edu/uploads/doc_39.xlsx

Assistance due to weather losses: Disaster Program Reminders

The USDA Farm Service Agency would like to remind farmers, agricultural producers and land owners there are a variety of programs available to provide assistance due to weather losses including excessive cold, blizzards and icy conditions. Producers with losses are encouraged to contact the Farm Service Agency as soon as possible after a loss is apparent. Timeframes to report losses vary across programs from 30 to 90 days. Documentation of losses including dated pictures, veterinarian records, production records, purchase records and other similar records are very important.

Here is an over-view of some of the programs applicable to extreme winter weather conditions:

LIVESTOCK INDEMNITY PROGRAM (LIP): Covers livestock losses in excess of normal mortality due to blizzards and excessive cold conditions. Losses due to low temperatures are based on two consecutive days of extreme (below zero) cold temperatures considering the wind chill. This varies for different ages and types of livestock. The temperature threshold, including wind chill for lambs is -10° F, young beef and dairy cattle -20°F, mature sheep -30°F and mature cattle -40°F. Losses must be reported within 30 days of when the loss is apparent.

EMERGENCY ASSISTANCE FOR LIVESTOCK, HONEY-BEES AND FARM RAISED FISH (ELAP): This program covers losses of purchased feed and/or mechanically harvested feed due to an eligible weather event. Eligible weather related honeybee losses include the loss of purchased feed, cost of additional feed purchased above normal, Colony Collapse Disorder and hive losses. A notice of loss must be filed within 30 days of the loss being apparent.

Continued on next page...

TREE ASSISTANCE PROGRAM (TAP): Provides financial assistance to qualifying orchardists and nursery tree growers to replant or rehabilitate eligible trees, bushes and vines lost by natural disasters. The loss must be in excess of 15 percent mortality (adjusted for normal mortality). Nursery trees include ornamental, fruit, nut and Christmas trees produced for commercial sale. A TAP application must be filed within 90 days of the weather event or from when the loss was apparent. Blizzards and freeze are eligible causes of loss.

EMERGENCY FOREST RESTORATION PROGRAM (EFRP): Provides payments to eligible owners of rural nonindustrial private forest land, including woodlots and sugar bushes, to carry out emergency measures to restore forest health including tree planting and debris removal. Blizzards and excessive winds are qualifying weather events. Notify the FSA office of potential losses. A special request by the FSA County Committee needs to be made in order to obtain funding for this program at the local level.

EMERGENCY CONSERVATION PROGRAM (ECP): Winter type losses can include the destruction of permanent fencing due to blizzards and high winds. Since this program requires the FSA County Committee to request funding, losses should be reported to the local FSA office as soon as possible. To learn more about the FSA Disaster Programs visit www.fsa.usda.gov. Producers in Franklin County are encouraged to contact the Franklin County FSA office at [151 Finney Boulevard](#) in Malone or calling [518-483-2850](#), option 2 for more information. Clinton & Essex County farmers can contact the Clinton-Essex FSA office by calling [518-561-4616](#), option 2 or visiting the office at [6064 Route 22, Plattsburgh](#).

Snow Care

By Jolene Wallace, Consumer Horticulture Educator

We've experienced some bitter cold already this winter and a fair amount of snow. As much as you may long for warmer weather, it only being January, we don't want our snow to melt yet. There are several advantages to snow in your landscape. The first is insulation. Snow prevents the temperature of the soil fluctuating between frozen and thawed. When the soil changes temperatures, the water in the soil expands and contracts taking the soil with it (think water freezing in an ice cube tray, if you are old enough to remember what an ice cube tray is). This is called 'heaving'. Plant roots can be torn or may be exposed to the outside air and dry out. Bulbs may end up on the ground instead of under it. In addition, snow keeps your plants from growing at the wrong time. Insulated ground keeps your bulbs, perennials, bushes, and shrubs from putting out growth that will be damaged by the cold air temperatures. During a winter 'warm spell', consider snow cover a good friend to have.

There are some things to watch for as the snow accumulates in your garden. Wet snow is very heavy and although most evergreens and shrubs can bounce back remarkably well, you may want to gently brush the snow off sagging branches. The magic word here is GENTLY! Brush up from the bottom of the shrub or evergreen, not from the top down. You want to keep the snow's weight from distorting the plant without breaking any cold, brittle branches. If you do have sagging branches in the spring, they will probably regain their shape. If not, some careful pruning may be in order. Do not try to knock ice off your trees or shrubs by shaking them and do not douse them with warm or hot water as these practices are likely to cause injury.

Don't worry about snapped tree branches until spring unless they pose a threat to your home, vehicles, or persons walking underneath. Get professional help if necessary. A chainsaw, ladder, and snow do not make a good combination for most of us!

FEBRUARY GARDEN TIPS

By Amy Ivy, Regional Horticulture/Extension Educator, CCE Clinton County

Living Windbreaks

If your driveway drifts just after you have it shoveled or plowed or if the wind howls around your door or yard, now is a good time to start planning a windbreak to plant once spring finally arrives. Our recent snow storms have given us a perfect opportunity to see where drifts tend to form and where existing plants are helping already. Shrubs and trees make excellent windbreaks if you choose and plant them carefully, and they add interest and beauty to your landscape.

Avoid the temptation to plant the fastest growing species you can find. Although you are in a rush for your plants to be tall enough to be effective, fast growing plants usually have serious drawbacks and are short-lived.

The same qualities that make a plant fast growing cause it to have weak, brittle wood. Some notoriously troublesome fast growers to avoid planting in windy locations include: all poplars including lombardy, cottonwood and trembling aspens, weeping willows, Russian olive, silver maples, boxelders and Chinese elms. There is a variety of sumac called by its varietal name “Tallhedge” because that is what it quickly becomes. Although this is certainly a fast growing shrub, I have not heard complaints about it being brittle or messy.

Slower growing plants usually have stronger wood, making them worth the wait.

There are several shrubs that make excellent windbreaks when planted in an informal hedge. White cedar is probably the best evergreen for our region, but it does turn an orangish color during winter which some people find objectionable. Hemlocks are perfectly hardy in our region and make a beautiful hedge, but unfortunately they do not do well in extremely windy locations where they are apt to suffer windburn. Mugo pines are bushy and tough as nails. They vary widely in height, but usually range between 4-6 feet tall and at least that wide.

Deciduous shrubs drop their leaves in the fall and many have interesting features throughout the seasons. They may have showy flowers, attractive berries and/or colorful fall foliage and a few have intriguing branching habits in winter as well. Even though these branches are bare in the winter, they are usually dense enough to offer quite a bit of wind resistance.

Some good shrubs for our region include highbush cranberry, nannyberry, arrowwood, burningbush or winged euonymus, amur maple (*Acer ginnala*), and red-stemmed dogwood. Before choosing your plants, read about their growth habits and requirements and select those that best suit your situation.

Windbreaks are usually planted in a looser, more open pattern than hedges. The loose design helps to buffet and slow the wind. Set the plants in staggered rows in groupings with space between the groups so that it doesn't just block the wind but slow it down.

FEBRUARY 2018

Sunday	Monday	Tuesday	Wednesday	Thursday	Friday	Saturday
				1 Dairy Repro. & AI Training - Peru	2 Dairy Repro. & AI Training - Peru 4-H Poultry orders due	3 4-H Horse Bowl & <u>Hippology</u> Mower Repair Workshop in Reber
4 Horse-drawn Sickle Bar Mower Repair Workshop in Reber	5	6 Pesticide Recert Class, Clinton Cty Salmon Project 6pm CCE bldg.	7 Pesticide Recert Class, Essex Cty	8 Finance Office Hours at the Hub 10 to 2	9 4-H Bluegrass 6:00pm Peru	10 4-H Lamb Day Ben Wever Farm 1-3pm
11 Principles of Biological Systems At the Grange	12 Principles of Biological Systems At the Grange	13	14	15	16	17 Log-Grown Shiitake Economics at The Grange 9-4
18	19 President's Day CCE office is Closed.	20 You Are the Judge-4-H 10am 4-H officer training 12-1 Small-scale dairy Workshop, Platts. 10 to 2	21	22 Rainbarrel workshop 10am	23	24
25	26 Horticulture Club 6pm	27	28			

Published monthly by the
Cooperative Extension Association
of Essex County
Cooperative Extension Center
Westport, NY 12993

Samantha Davis, Editor
Laurie Davis, Layout

The information given is for educational purposes only. Reference to commercial products or trade names is made with the understanding that no discrimination is intended and no endorsement by the Cooperative Extension Association is implied.

All Cooperative Extension programs in Essex County are provided on a non-discriminatory basis without regard to race, color, sex or national origin and provide equal program and employment opportunities.

Coyote Ridge Sheep



Attention: Paper copies of Town & Country are being phased out. If you have paid for a subscription, it will continue through March, 2018. Future news will be sent through weekly emails.

For information contact:

Cornell Cooperative Extension Association of
Essex County
P.O. Box 388
Westport, NY 12993

Phone: (518) 962-4810 Fax: (518) 962-8241
Email: essex@cornell.edu

<http://essex.cce.cornell.edu/>