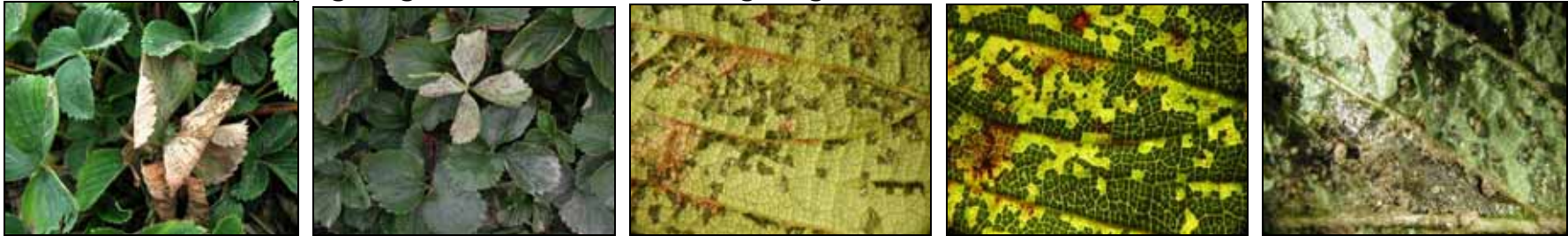


# Strawberry Angular leaf spot, *Xanthomonas fragariae*

Foliar symptoms: translucent lesions on bottoms of leaves (1, 2). Reddening of upper leaf surfaces (3, 4, 5)



Foliar symptoms: Leaf necrosis after infection (1), Reddening of lesions on leaf lower surface (2).  
Lesions under top lighting (3), same under back lighting (4), bacterial ooze and sand on leaf lower surface (5).



Fruit symptoms: necrosis of infected calyxes

