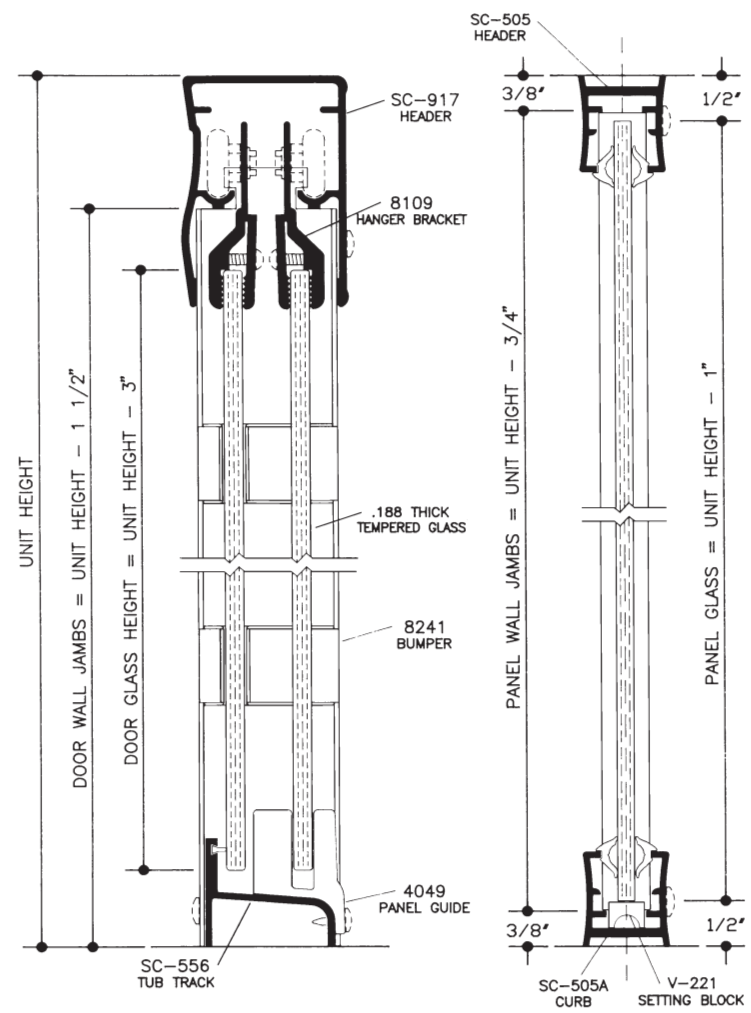
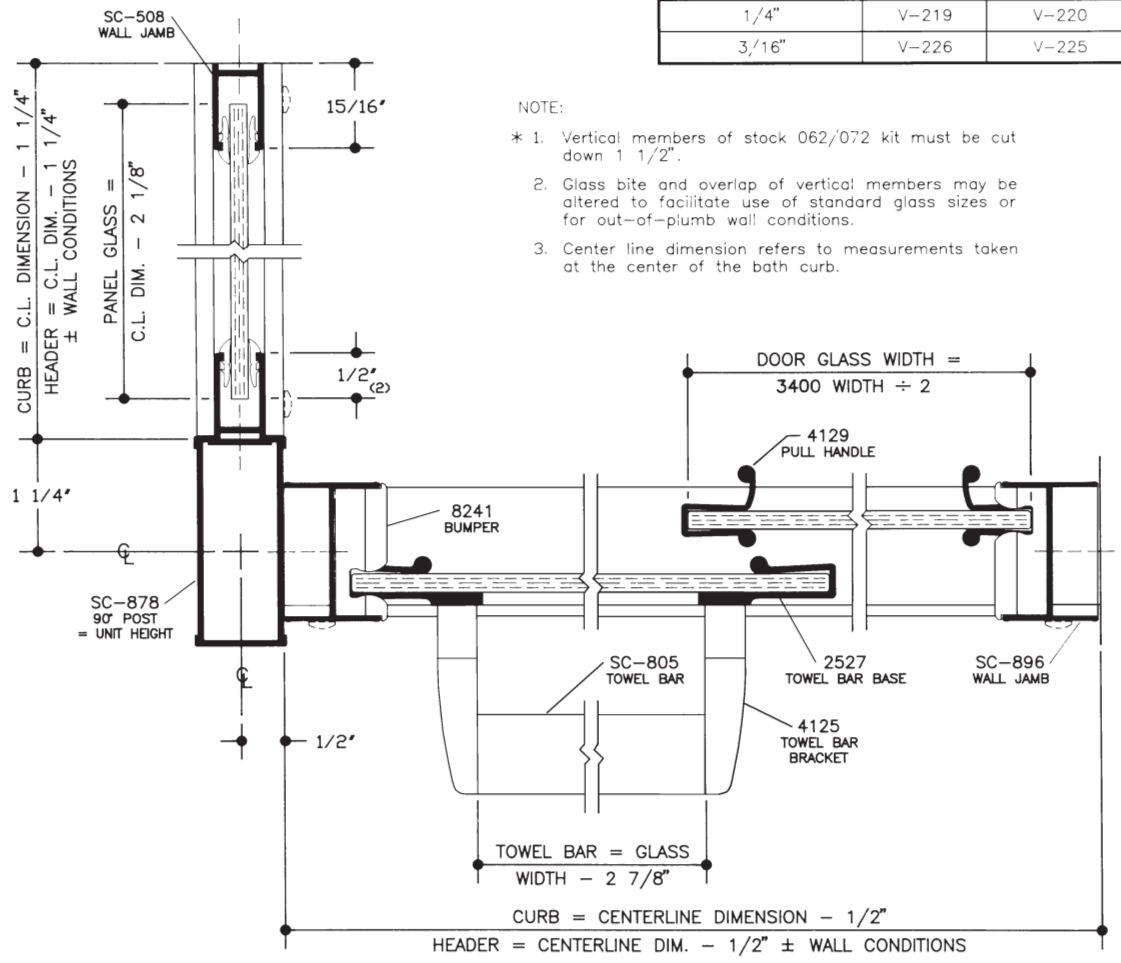


PANEL GLAZING VINYL		
GLASS THICKNESS	VERTICAL	HORIZONTAL
1/4"	V-219	V-220
3/16"	V-226	V-225

- NOTE:
- * 1. Vertical members of stock 062/072 kit must be cut down 1 1/2".
 2. Glass bite and overlap of vertical members may be altered to facilitate use of standard glass sizes or for out-of-plumb wall conditions.
 3. Center line dimension refers to measurements taken at the center of the bath curb.



VERTICAL CROSS SECTION



HORIZONTAL CROSS SECTION

1/2 SIZE DETAIL

NOTE: Glazing material for all K/D units and Glazed units must conform to Ansi Z97.1 and CPSC Standard 16 CFC 1201 Category I and II.

SERIES	MODEL	UNIT WIDTH & HEIGHT	DOOR GLASS SIZE	PANEL GLASS SIZE
3401 3501 FRAMELESS BATH ENCLOSURE	3401	60" x 30" x 57" Consists of 3400-60" + 062T Panel Kit*	(2) 30" x 54"	29 1/8" x 56"
	3501	60" x 30" x 70" Consists of 3500-60" + 062S Panel Kit*	(2) 30" x 67"	29 1/8" x 69"



SHOWER ENCLOSURES

7201 Snider Road ■ Mason, Ohio 45040
Phone (800) 45-BASCO