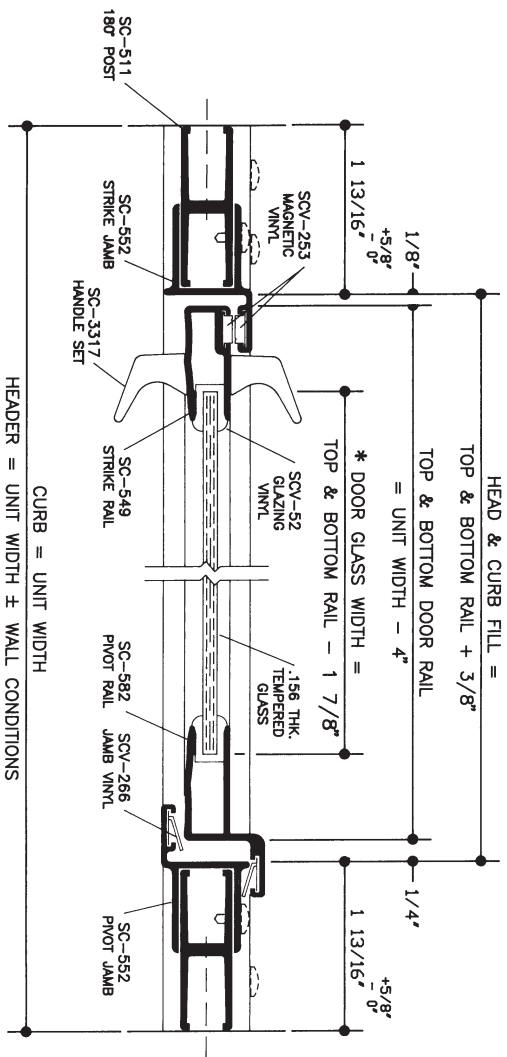


VERTICAL CROSS SECTION



HORIZONTAL CROSS SECTION

- NOTES:
1. Glass bite and overlap of vertical members may be altered to facilitate the use of standard glass sizes or for out-of-plumb wall conditions.
 - * 2. KD door components machined for a maximum glass size of 27 3/8" wide by 63 1/2" high. Other sizes may be substituted.

1/2 SIZE DETAIL

NOTE: Glazing material for all KD units and Glazed units must conform to ANSI Z97.1 and CPSC Standard 16 CFR 1201 Category I and II.

<p>SERIES</p>	<p>WIDTH X HEIGHT</p>	<p>DOOR GLASS SIZE</p>
<p>335 PIVOT DOOR</p>	<p>33 1/4" x 69 1/4" 27 3/8" x 63 1/2" *</p>	<p>36" ACRYLIC MODULAR</p>



SHOWER ENCLOSURES
7201 Snider Road ■ Mason, Ohio 45040
Phone (513) 573-1900