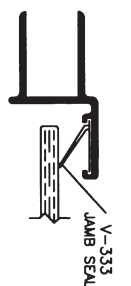
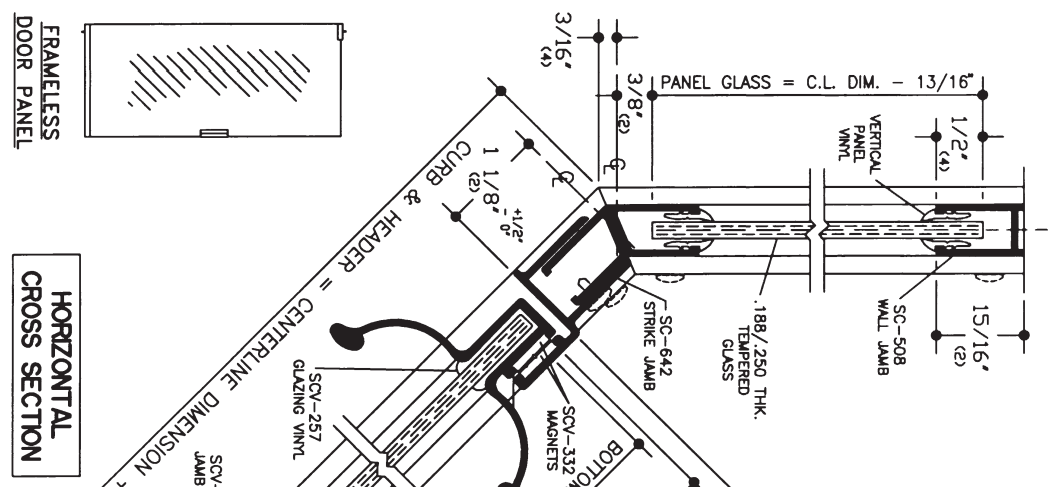
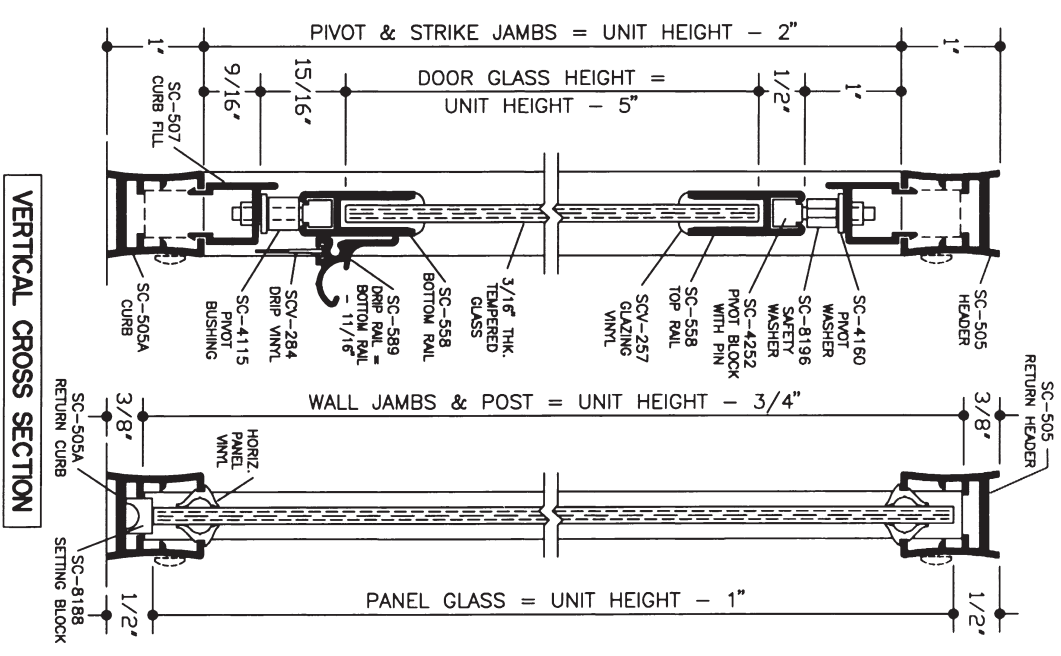


PANEL GLAZING VINYL		
GLASS THICKNESS	VERTICAL	HORIZONTAL
1/4"	SCV-219	SCV-220
3/16"	SCV-226	SCV-225

NOTES:

1. Glass bite and overlap of vertical members may be altered to facilitate use of standard glass sizes or for out-of-plumb wall conditions.
2. KD door components machined for a maximum glass size of 29 5/8" x 63 1/2". Smaller sizes may be substituted.
3. The SCV-332 strike jamb magnet (8" long) should be centered in the jamb with SCV-333 jamb seal vinyl above and below it (see detail).
4. If 1/4" thick door glass is used in place of the standard 3/16" thickness, then substitute V-308 vinyl in place of the SCV-257 glazing vinyl.
5. Centerline dimension refers to the measurements taken at the center of the shower curb.



NOTE: Glazing material for all KD units and Glazed units must conform to Ansil Z97.1 and CPSC Standard 16 CFC 1201 Category I and II.

SERIES	UNIT	WIDTH x HEIGHT	DOOR GLASS SIZE	PANEL GLASS SIZE
161/761 FRAMELESS THINLINE	161	36" x 32 1/4" x 36" x 68 5/8"	Width As Determined * Height = 63 1/2"	Width As Determined * Height = 67 1/2"
	361	36" x 32 1/4" x 36" x 72 1/8"	Width As Determined * Height = 67"	Width As Determined * Height = 71"
	761	36" x 32 1/4" x 36" x 72 1/8"	Width As Determined * Height = 67"	Width As Determined * Height = 71"



SHOWER ENCLOSURES  
7201 Snider Road ■ Mason, Ohio 45040  
Phone (513) 573-1900