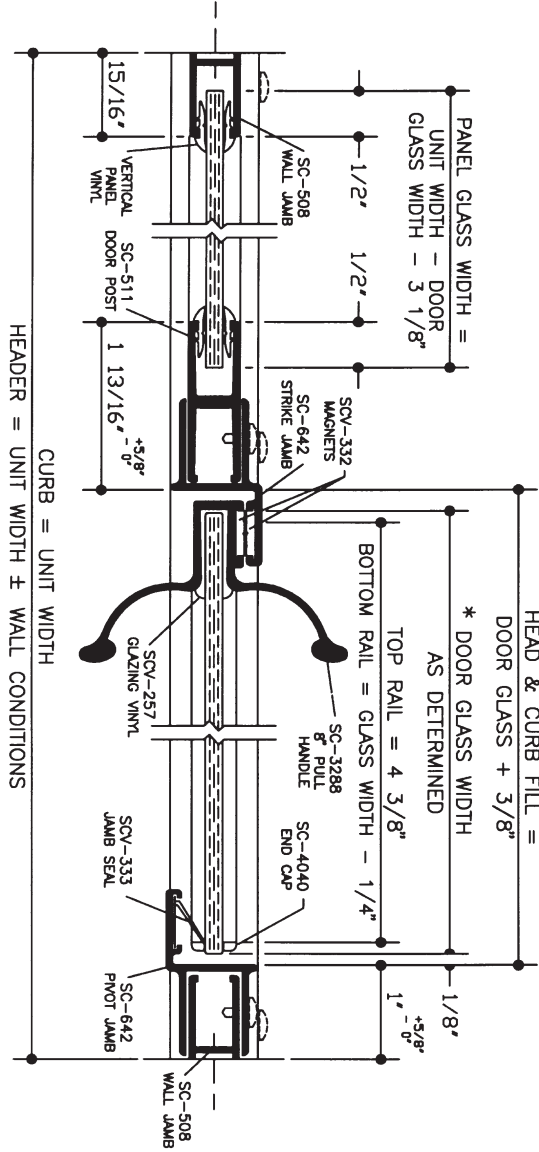
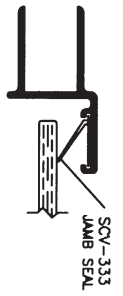


VERTICAL CROSS SECTION

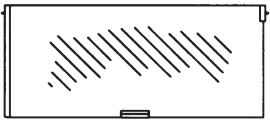


HORIZONTAL CROSS SECTION

STRIKE JAMB DETAIL ABOVE & BELOW MAGNET



FRAMELESS DOOR PANEL



PANEL GLAZING VINYL		
GLASS THICKNESS	VERTICAL	HORIZONTAL
1/4"	SCV-219	SCV-220
3/16"	SCV-226	SCV-225

NOTES:

1. Glass bite and overlap of vertical members may be altered to facilitate use of standard glass sizes or for out-of-plumb wall conditions.
- * 2. KD door components machined for a maximum glass size of 29 5/8" x 63 1/2". Smaller sizes may be substituted.
3. The SCV-332 strike jamb magnet (8" long) should be centered in the jamb with SCV-333 jamb seal vinyl above and below it (see detail).
4. If 1/4" thick door glass is used in place of the standard 3/16" thickness, then substitute SCV-308 vinyl in place of the SCV-257 glazing vinyl.

1/2 SIZE DETAIL

SERIES	UNIT	WIDTH x HEIGHT	DOOR GLASS SIZE	PANEL GLASS SIZE
136/736 FRAMELESS THINLINE	136	60" x 68 5/8"	Width As Determined * Height = 63 1/2"	Width As Determined * Height = 67 1/2"
	736	60" x 72 1/8"	Width As Determined * Height = 67"*	Height = 71"

NOTE: Glazing material for all KD units and glazed units must conform to Ansi 297.1 and CPSC Standard 16 CFC 1201 Category I and II.



SHOWER ENCLOSURES
7201 Snider Road ■ Mason, Ohio 45040
Phone (513) 573-1900