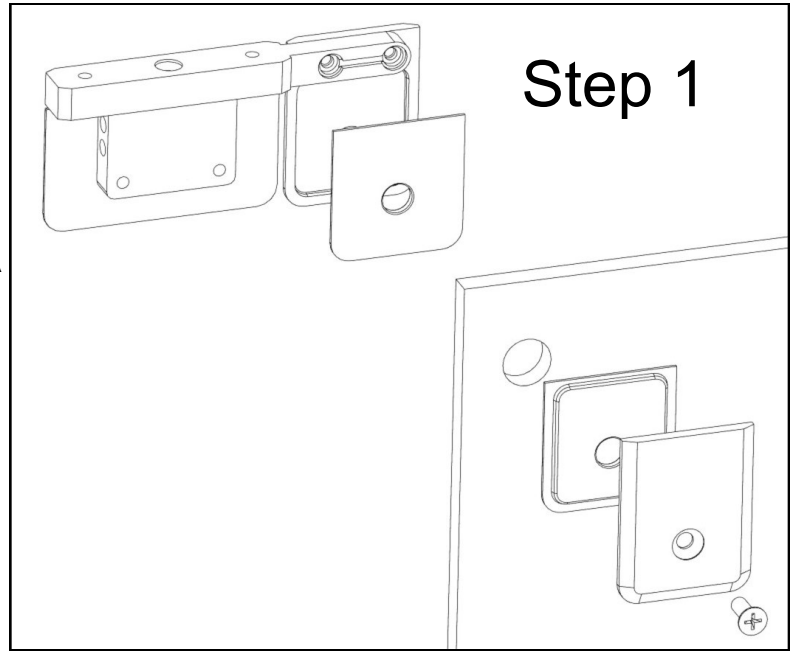


# Appendix — B Glass to Glass Pivot Hinges

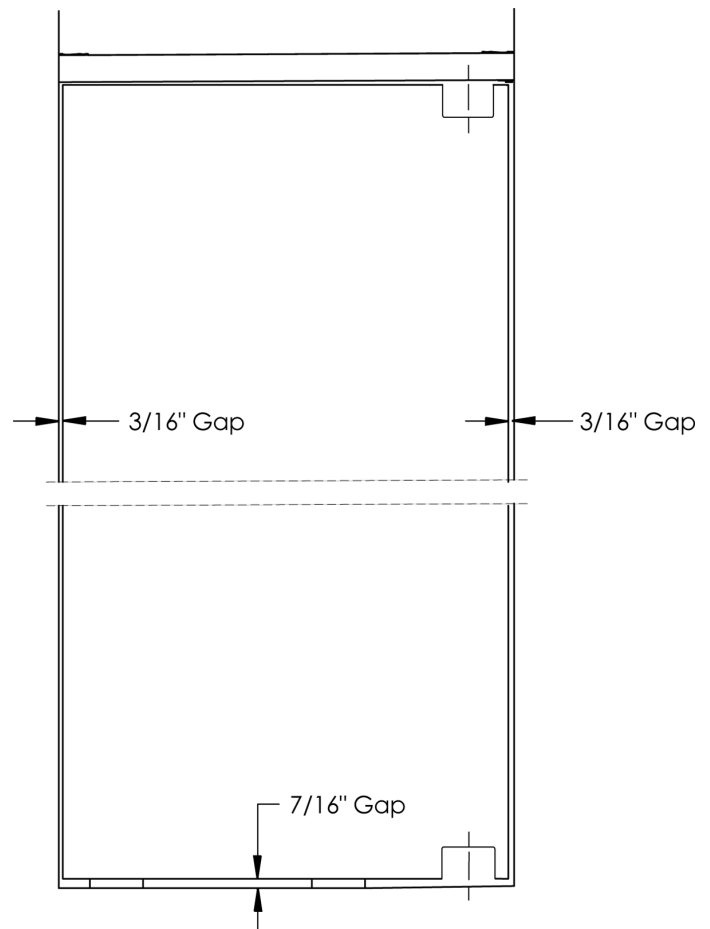
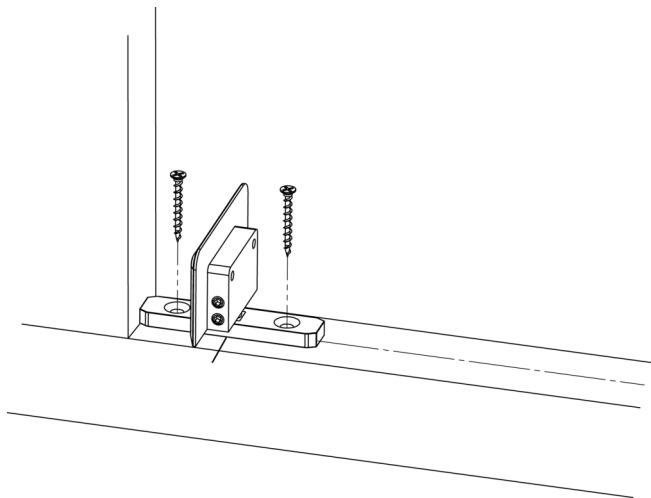
If your unit has been purchased glass to glass (panel mounted) pivot hinges the following is how to install the hinges.

**1)** Mount the hinge on the 1/2" glass panel with the hinge hole. Use a 16mm (5/8") long screw from the hinge pack for this step. A thin gasket needs to be placed between the glass and the clamping surface of the hinge.



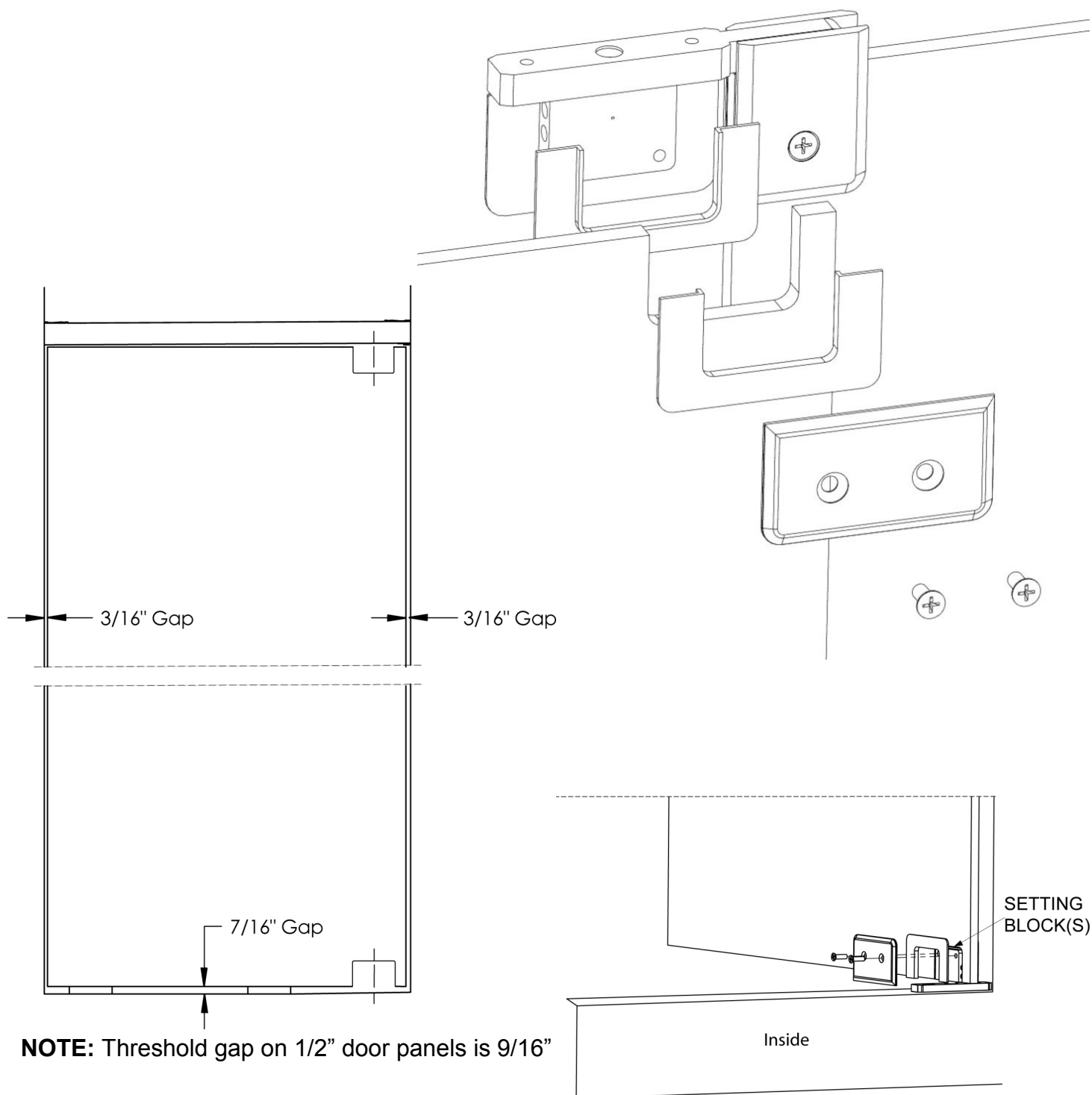
**2)** Using the process found on pages 11 & 12, mount the bottom hinge to the threshold.

- 3/8" door require a 7/16" threshold gap
- 1/2" door require a 9/16" threshold gap.



## Appendix—B Glass to Glass Pivot Hinges (cont'd)

3) Install the door panel into the top and bottom hinges using 1 gasket on each side of the glass. Check for correct gaps, using additionally setting blocks in the hinges as necessary to set the gaps. When gaps are correct, securely tighten 2 screws in each hinge to permanently install the door panel.



**NOTE:** Threshold gap on  $1/2"$  door panels is  $9/16"$