

1. Time Utility

2. Data denotes raw facts and figures such as number, words, figures etc. that can be processed, manipulated or produced by the computer.

Steps of data processing

1. Preparation of source document
2. Input of data
3. Manipulation of data
4. Output of information
5. Storage

3. a) Unicode

b)

- To keep character coding simple and efficient, It assigns a unique value or name to each character.
- It can encode all of the character used in the writing languages of the world.

4. \_\_\_\_\_

5. a)  $(11101)_2 - (0110)_2 = (10111)_2$

b)  $(100110)_2 - (11011)_2 = (1011)_2$

6.

- It is lighter and thinner
- They consumes less power
- They emit less heat

7. a)

- Normal LCD monitor is needed. It will be more energy friendly.
- Normal keyboard. A multimedia keyboard is not needed since it is for office purpose.
- A bar code reader .
- CPU with a normal processor will be good.
- Need a good storage space which means a good hard disk is required.

These will help him in his idea.

b)

- A bar code reader is needed for fast and effective billing.
- A dot matrix printer should be got for billing purpose.

8. CD - Compact Disk is a type of optical disk. It uses a high power laser beam for recording data. A narrow laser beam which is controlled by lenses and prism are used for

recording the data. The high power laser beam burns microscopic spots in master disk. This master disk is used for making molds and this mold is used for making copies on plastic disk.

A thin layer of aluminum followed by a transparent plastic layer is deposited on it. A lesser power laser beam is used to retrieve the data. The pattern of pits and lands are converted to electrical signal.

#### 9. TCP/IP - Transmission Control Protocol / Internet Protocol.

Only communication is possible with the networks following the same protocol. For accessing the Internet a TCP/IP address is must.

10. Every device on a network has a unique 4 part numeric address called Internet Protocol Address. It is used to uniquely identify a device on the network.

Example of IP address is 203.127.54.1

11. a)

- Picture of the candidate and other documents can be send along with an e-mail.
- Sending and receiving process takes only few minutes and it is cheap.
- E-mail message can be managed using E-mail programs and can be locally saved.

b) Example for E-mail

KichuKishore138@gmail.com

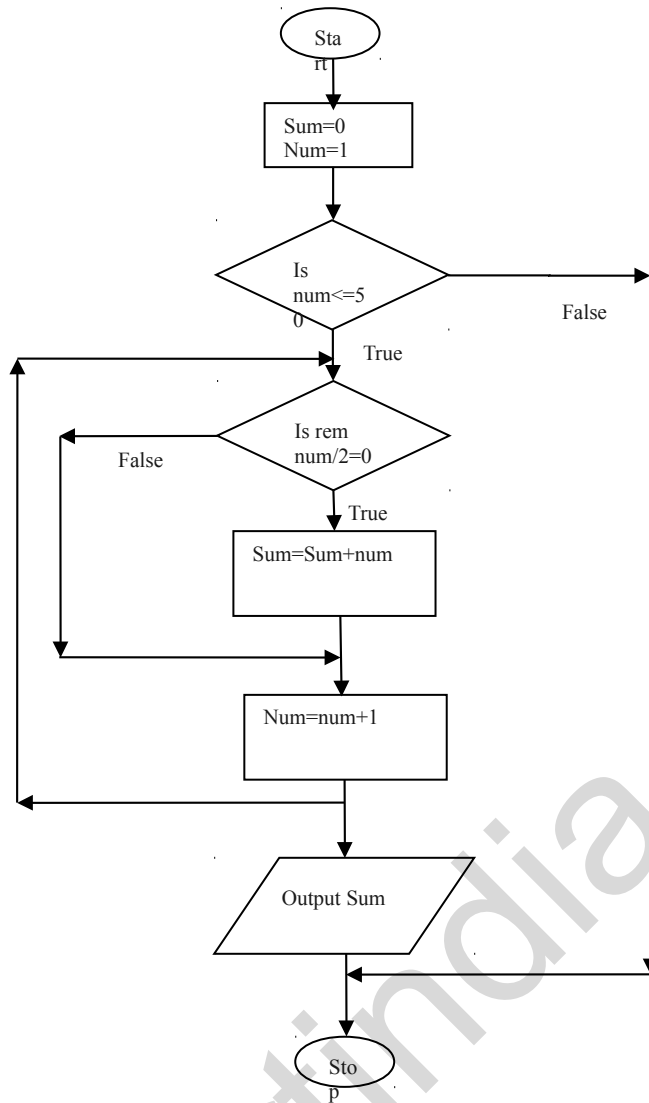
(User name @ domain name)

12. A network can be use till for those frequent situations in which computer users wish to share information, secondary storage peripheral devices or a database.

The advantages are :

- Resource sharing
- Reliability
- Price and performance
- Act as a communication medium.
- Scalable.

13.



14. The three main components of unix 0.1 is (i) Kernel (ii) Shell (iii) Utilities

Kernel :

- Core of the unix system
- loaded upon system startup
- It controls
  1. device management
  2. Process scheduling
  3. Memory allocation
  4. Data transfer etc.
- User has no interaction with Kernel.

Shell :

- The shell program provides a prompt to enter commands.

- The shell act as an interface
- Passes command to kernel and show result back.

Utilities :

- Utility programs referred as commands.
- They include functions like editing.
- File maintenance
- Printing
- Storing
- Programming support
- On line information etc.

15. Computers are very helpful in the modern way of treatment.

- Tele-Medicine

Doctors and nurses can examine patients in remote locations by monitoring the patients conditions.

- Medical Imaging

We can view anatomical structure of the human body with the help of medical imaging. Various medical imaging techniques are X-ray projection imaging, C T, MRI, MRS, Ultrasonic, ESI etc.

- Medical diagnosis

The computer can help the doctor as a vast encyclopedia by telling him the correct medicine and the correct dosage of medicine.

16. Integrated workstation is a multifunction device which allows across to all the functions of the automated office. An integrated workstation should be able to do word processing, text processing, E-mail, connect LAN and EPABX, act as an ISDN terminal, corporate database.access etc.

So an integrated workstation is the major component of an integrated office.

17.

Web Browser	Search Engines
Internet Explorer	Google
Mozilla	Yahoo

20. Forms :

- Basic building blocks of a VB application
- Different controls can be placed in a form.

Modules :

- A module has no visual interface.
- It has a code window
- It is used to store the procedures that are used by more than one form in the project.

21. a). Project Explorer Window :

The project explorer displays the component at the project. It lists the form and modules in your current project. It is very helpful while preparing large projects. There are three buttons on the top of the window. The left button displays the code of an object, right button toggles the folder and the middle button displays the object.

b). Properties Window :

It lists the property settings for the selected form or control. Properties window is used to set the different attributes to the selected control.

c). Form Layout Window :

The form layout window allows us to position the forms in the application using a small graphical representation of the screen. To specify the position of the form drag the form in the form layout window.

22. The event is 'Click'

```
Private sub Form1_click()  
Msgbox " (Message) "  
End sub.
```

Here the written message will display when clicked.

23. Caption - 'txt comment'

More length - 150

Multiline - True

24. a). Single

b) Long Integers

25. Program 2

```
Private Sub Command1_Click()  
Dim i, a As Integer  
a = Val(Text1.Text)  
Cls  
For i = 1 To 10  
Print a; vbTab & "*"; vbTab & i; vbTab & "="; vbTab & a * i  
Next i
```

End Sub

(print a & "\*" & i "=" & a\*I –normal print statement is like this. here ‘&’ symbol is used to combine the strings and ‘vtab’ is used to put tab space. u just avoid thevtab and check the result.26.

### Program 1

```
Private Sub Command1_Click()
```

```
Dim pcost As Single
```

```
If Text1.Text < 100 Then
```

```
pcost = Text1.Text * 1
```

```
ElseIf Text1.Text < 500 Then
```

```
pcost = Text1.Text * 0.75
```

```
Else
```

```
pcost = Text1.Text * 0.5
```

```
End If
```

```
MsgBox "Your printing cost is Rs." & pcost
```

```
End Sub
```