



September 26 – 298, 2018

The following courses have been APPROVED by:

COPE

(Council on Optometric Practitioner Education)

As of May 8, 2018

IMPORTANT: Practitioners are advised to check directly with their own optometry state board office to clarify any special conditions attached to the COPE acceptance.

Course #	COPE #
10C1	57093-GO
10L1	56704-CL
10L2	56701-CL
10L3	56705-CL
11C1	56782-GL
11C2	56117-PD
11C3	49666-PH
11C4	56615-PM
11C5	48328-RS
11L1	56706-AS
12B2	56424-PM
12B3	52292-PM
12C1	56786-GL
12C2	56154-PS
12C4	51456-SD
12C5	51677-PS
12L1	56189-CL
13B2	46694-PM
13C2	52188-GL
13L1	56695-CL
20C3	55796-PD
21B1	46595-PM
21B2	52774-PM
21C1	48317-GL
21C2	56832-PS
21C3	51864-PS
21C4	55485-PH
21L1	56251-CL

Course #	COPE #
22B5	52777-PM
22B6	56425-PM
22C2	52198-GL
22C5	48272-AS
22C6	56662-AS
22L1	56344-CL
23B2	57136-PM
23B4	56653-PM
23C1	56947-GL
23C2	56651-AS
23C3	56613-RS
23C4	56367-SD
23C5	50231-AS
23L1	56249-CL
24B2	50631-PM
24B5	52775-PM
24B6	56599-PM
24C1	56545-PS
24C3	56612-RS
24C5	47506-AS
24L1	56250-CL
25B5	56741-PM
25B6	56614-PM
25C1	47898-GL
25C3	56122-SP
25C4	48306-AS
25C5	48854-AS
25L1	47701-CL

Course #	COPE #
26B5	52773-PM
26C1	56966-GL
26C3	52515-AS
26C4	56136-LV
26C5	52018-NO
26L1	56248-CL
31B2	56981-PM
31B3	56589-PM
31C3	56489-GL
31C5	51091-AS
31C6	56855-LV
31L1	56536-CL
32B2	56912-PM
32C1	56423-GL
32C2	56428-AS
32C3	56696-AS
32C4	50474-PD
32C6	56456-GO
32L1	56719-CL
32O1	56898-PM
33B1	56590-PM
33B4	56680-PM
33C1	56652-AS
33C2	56433-PO
33C3	56697-GO
33C4	56949-SD
33C5	56347-SD
33C6	56564-AS

NOTE: You will not receive credit if you are late to a course or not present in the course for 50 minutes of every 60 minutes of course instruction.

Do not assume that the courses you registered for will be automatically approved.
(over)

Course #	COPE #
33L1	56621-GO
34B2	56978-PM
34C1	56273-GL
34C2	49566-PD
34C3	56111-AS
34C4	56937-LV
34C5	52065-PO
34L1	56377-CL

Course #	COPE #
41C1	56434-PO
41C2	55922-NO
41C3	52034-AS
42C1	56867-PB
42C2	56601-NO
42C3	56451-FV
44B1	56979-PM
45C1	56886-SD

Course #	COPE #
45C2	51065-GL
45C3	56452-FV
45L1	56109-CL

NOTE: You will **not** receive credit if you are late to a course or not present in the course for 50 minutes of every 60 minutes of course instruction.
Do not assume that the courses you registered for will be automatically approved.
 (over)



September 26 – 29, 2018

The following courses are **COPE PENDING**
(Council on Optometric Practitioner Education)

As of May 8, 2018

Course
10L4
10L5
11B2
12C3
13C4
13C5
22C3
23B5
23B6
23C6
24B4
25B4
25C2
25C6

Course
26B3
26C2
26C6
31C1
31C2
31C4
32B4
32B5
32C5
33B5
34C6
41L1
42L1
43L1

NOTE: You will **not** receive credit if you are late to a course or are not present in the course for 50 minutes of every 60 minutes of course instruction.
Do not assume that the courses you registered for will be automatically approved.

SEE FOR YOURSELF.

BRING YOUR VISION TO NEW YORK, THE CITY WHERE
THINGS CHANGE IN THE BLINK OF AN EYE.

More than 16,000 eyecare professionals will attend Vision Expo East. Some seek education, while others come to see new products or network with peers. Whatever your goals may be, you can achieve them at Vision Expo.



Learn about the latest innovations in eyecare, lenses, therapeutics and practice management.



Explore more than 5,000 fashion and luxury brands as well as cutting edge diagnostic and medical equipment.



Grow your business by discovering new tools and strategies that increase profitability, efficiency and patient care.



Socialize with peers from the most influential eyecare and eyewear companies.

YOUR VISION. YOUR WORLD—VISION EXPO.

CLINICAL Highlights

ANTERIOR SEGMENT = 32 HRS

- 10L4 The Specialty Practice of Ocular Surface Disease and the Current State of the Dry Eye Practice
- 10L5 Ocular Surface Disease: The Diagnosis, Treatment, and Case Studies in Ocular Surface Disease
- 11L1 The Continuum of Care in Keratoconus: From Spectacles to Contact Lenses to Surgery
- 12C4 Diagnosing and Managing Ocular Emergencies and Urgencies
- 13C4 Ocular Surface Disease - DEWS II and Other Guidelines, What Does It All Mean?
- 22C5 Straight Outta Tears: Treating and Managing MGD, Lid Bugs and Other Lid Thugs!
- 22C6 The Optometrists' Guide to Cross-Linking: Diagnosis to Evaluating Treatment Options
- 22O1 How Dry Eye Disease Impacts Vision and Refraction
- 23C1 Glaucoma Treatment Considerations
- 23C2 The Greatest Anterior Segment Disease and Medical Management of Contact Lens Complications Course - Ever!
- 23C5 Using New Technology to Decipher and Diagnose OSD
- 24C6 Managing the Psychology of Dry Eye Disease - The Role of Diagnostics
- 25C4 The Differential Diagnosis and Treatment of Corneal Staining
- 25C5 Keratoconus Corneal Disease Corneal Cross-linking and More
- 26C3 Demystifying Lid Disease ODs Guide to Skin Cancer
- 31C2 Pearls For Success - Co-Management of Cataract Patients and How To Manage Every Post-Op Complication Possible
- 31C5 Dry Eye Disease It's Not What You Think
- 32C2 Ocular Inflammation Rare and In the Chair
- 32C3 Medical and Surgical Aesthetics: (oculoplastic surgery, injectables) The Ophthalmological and Optometric Perspectives
- 33C1 Ocular Surface Disease - The Medical Business of Dry Eye: A Comprehensive Course on OSD Evaluation, Diagnosis and Treatment Strategies
- 33C6 The Shifting Sands of Dry Eye and MGD - Expert Perspective
- 34C3 Digital Dry Eye
- 43C3 New Apps for the iLid

CONTACT LENS = 29 HRS

- 10L1 State of the CL Industry - Future Trends in Contact Lenses and Ocular Surface, Where Have We Been and Where Are We Going
- 10L2 Clinical Management of the Challenging Contact Lens Patient - Case Studies
- 10L3 - Establishing and Succeeding in Specialty Contact Lens Practice - The Business of a Contact Lens Specialty Practice
- 11L1 The Continuum of Care in Keratoconus: From Spectacles to Contact Lenses to Surgery
- 12L1 Modern Hybrid Fitting: The Next Generation
- 13L1 Medically Necessary Contact Lens: Why It Makes Sense in Private Practice
- 21L1 SCLERAL LENSES 101: Basic Fitting
- 21L3 Contact Lens Fitting: Technologies For Infants and Children
- 22L1 SCLERAL LENSES: Advanced Fitting
- 23C2 The Greatest Anterior Segment Disease and Medical Management of Contact Lens Complications Course - Ever!
- 23L1 SCLERAL LENS: Trouble Shooting
- 24L1 EVERYTHING BUT SCLERAL LENSES
- 20C1 Vision Series - Presented by Bausch & Lomb - Bausch + Lomb: Advancing Contact Lens Innovation
- 25L1 Scleral Lens Workshop
- 26L1 Specialty Lens Workshop
- 31L1 PEDS in CLS: "I Can Wear Contacts, Too!"
- 32L1 Contact Lens Fitting for the Ever Growing Market: The Presbyopic Patient
- 33L1 Myopia Control: Strategies, Science, Success
- 34L1 RGP 123 Corneal Re-Shaping, Sclerals and Multifocals: Incorporating GPS Into Your Practice

- 42L1 Custom Soft Lenses: Designs and Applications
- 43L1 Dailies News The Revolution in One Day Lenses
- 45L1 Forget Facebook These Contacts Really Matter

DRY EYE/OCULAR SURFACE DISEASE = 16 HRS

- 10L4 The Specialty Practice of Ocular Surface Disease and the Current State of the Dry Eye Practice
- 10L5 Ocular Surface Disease: The Diagnosis, Treatment, and Case Studies in Ocular Surface Disease
- 12C4 Diagnosing and Managing Ocular Emergencies and Urgencies
- 22O1 How Dry Eye Disease Impacts Vision and Refraction
- 23C4 Interactive Grand Rounds
- 31C1 Contemporary Care of the Patient With Diabetes
- 33C1 Ocular Surface Disease - The Medical Business of Dry Eye: A Comprehensive Course on OSD Evaluation, Diagnosis and Treatment Strategies
- 34C3 Digital Dry Eye
- 41L1 What Can An OD Learn From An Allergist
- 41C1 When ODs Become Emergency Room Doctors
- 45C1 The Ocular Manifestations of Diabetes

GLOBAL CONTACT LENS FORUM = 4 HRS

- 10L1 State of the CL Industry - The Role of Medical Science Liaisons in the Eye Care Industry
- 10L2 Clinical Management of the Challenging Contact Lens Patient
- 10L3 Establishing and Succeeding in Specialty Contact Lens Practice - The Business of a Contact Lens Specialty Practice

GENERAL OPTOMETRY = 12 HRS

- 10C1 ODs on Facebook After Dark: The Eye Disease Forum
- 22C3 The Rapidly Changing Landscape of Refraction Technologies - How They Will Impact Your Practice and Where You Should Go From Here
- 25O2 Eye Diseases That Opticians and Technicians Should Know About
- 31O2 No Wonder You Don't See Well - How Eye Diseases Affect Vision
- 32C6 MACRA, MIPS, APMs: More toxic alphabet soup - and the antidote to survive the meal
- 33C3 Incorporation of Aesthetics Into the Optometric Practice
- 33L1 Myopia Control: Strategies, Science, Success

GLAUCOMA = 16 HRS

- 11C1 Glaucoma Update: New Tools and Treatment Options
- 12C1 Glaucoma Clinical Pearls and Clinical Cases
- 13C2 Laser Therapy For the Open Angle Glaucomas ALT SLT
- 21C1 Managing the Glaucoma Suspect
- 22C2 New Developments with OCT Testing in Glaucoma
- 23C1 Glaucoma Treatment Considerations
- 25C1 Glaucoma Grand Rounds: How Would You Manage This Case
- 26C1 New Ideas in Glaucoma
- 31C3 The Central Ten Degrees
- 32C1 Cases and Controversies in Glaucoma
- 34C1 Innovations in IOP Technology for Glaucoma

HANDS ON WORKSHOPS = 5 HRS

- 20C3 OCT Workshop
- 25L1 Scleral Lens Workshop
- 26L1 Specialty Lens Workshop

NEW TECHNOLOGY = 11 HRS

- 11C1 Glaucoma Update: New Tools and Treatment Options
- 11C2 OCT, OCTA, The What, When, How?
- 12L1 Modern Hybrid Fitting: The Next Generation
- 23C5 Using New Technologies to Decipher and Diagnose OSD
- 23C6 New Frontiers in the Detection and Management of Diabetic Retinopathy
- 24C5 Create Distinction and Build Your Practice with New Technologies
- 32C4 Understanding and Interpreting OCT
- 41C3 New Apps for the iLid

OCULAR SURFACE DISEASE AND WELLNESS SYMPOSIUM = 3 HRS

- 10L4 The Specialty Practice of Ocular Surface Disease and the Current State of the Dry Eye Practice
- 10L5 Ocular Surface Disease: The Diagnosis, Treatment, and Case Studies in Ocular Surface Disease

PEDIATRICS, SYSTEMIC DISEASE AND NEURO = 17 HRS

- 12C4 Diagnosing and Managing Ocular Emergencies and Urgencies
- 23C4 Interactive Grand Rounds
- 31C1 Contemporary Care of the Patient with Diabetes
- 33C4 Rheumatology, Thyroid Dysfunction, and the Eye
- 33C5 Diabetes Case Studies
- 41C2 Doctor, I See Double Simplifying Diplopia
- 41L1 What Can an OD Learn From an Allergist
- 42C2 Neuro-Ophthalmic Update
- 42C3 Visual Performance Evaluation for Sports
- 44C3 Optimizing Visual Performance for Sports
- 45C1 The Ocular Manifestations of Diabetes

PHARMACOLOGY = 10 HOURS

- 11C3 Simplifying Systemic Antibiotics
- 13O1 Grand Rounds for Opticians and Technicians
- 22C5 Straight Outta Tears: Treating and Managing MGD, Lid Bugs and Other Lid Thugs!
- 23C4 Interactive Grand Rounds
- 25C1 Glaucoma Grand Rounds: How Would You Manage This Case
- 34A1 This Is Your Eye - This Is Your Eye on Drugs: Pharmacology for Opticians and Techs
- 41O2 Grand rounds for Opticians and Techs

POSTERIOR SEGMENT AND MACULAR DEGENERATION = 15 HRS

- 12C2 Macular and Retinal Holes Refer or Not
- 12C3 Retina Grand Rounds
- 12C5 The Swollen Optic Nerve - Now What?
- 21C2 Changing the Paradigm in Diabetic Retinopathy Management
- 23C6 New Frontiers in the Detection and Management of Diabetic Retinopathy
- 24C1 Innovations in Diabetic Retinopathy
- 25C2 The Greatest Posterior Segment Disease Course - Ever!
- 26C2 Ocular Nutrition Controversies
- 31C4 How to Optimize Your Patient's Retinal Health Over a Lifetime
- 32C4 Understanding and Interpreting OCT
- 32C5 Age Related Macular Degeneration - Current Concepts and Future Directions

SURGERY = 14 HRS

- 11C5 Refractive Surgery Problem Solving
- 11L1 The Continuum of Care in Keratoconus: From Spectacles to Contact Lenses to Surgery
- 23C3 Surgical Correction of Presbyopia
- 24C3 The Optometrist's Role in Preparing Your Patient for Cataract & Refractive Surgery
- 25C3 Optometric Surgical Procedures - Laser, Injectables and Minor Surgical Procedures
- 31C2 Pearls for Success - Co-Management of Cataract Patients and How to Manage Every Post-op Complication Possible
- 32C3 Medical and Surgical Aesthetics: (oculoplastic surgery, injectables) The Ophthalmological and Optometric Perspectives
- 33C2 The Surgical Update 2018 What Every Optometrist Needs to Know
- 41C1 Co-Management of Premium IOL Patients Pearls for Maximizing Patient Satisfaction and Surgical Outcomes

VISION SERIES

This format invites you to grab a bite to eat or drink and continue learning over lunch. Take a break from the exhibit hall or formal classroom as industry leaders address the latest clinical innovations in a relaxed and collaborative learning environment. Then put theory into practice by heading back into the exhibit hall to connect and build on your classroom learning.

SUPPORTED BY: BAUSCH & LOMB, CARL ZEISS MEDITEC, NOVARTIS, REGENERON, SHIRE

THURSDAY, SEPT 27

SATURDAY, MARCH 17

SUNDAY, MARCH 18

TBD

Presented by: **BAUSCH + LOMB**

NOT FOR CREDIT | LUNCH PROVIDED
12:15 PM - 12:30 PM | THIS COURSE IS 1 HOUR
FROM 12:30 PM - 1:30 PM

12:15 PM - 1:30 PM
20C2 - Ocular Allergy Disease State and Treatment Update

Speaker: TBD

Presented by: **NOVARTIS**

NOT FOR CREDIT | LUNCH PROVIDED
12:15 PM - 12:30 PM | THIS COURSE IS 1 HOUR
FROM 12:30 PM - 1:30 PM

Presented by: **REGENERON**

NOT FOR CREDIT | LUNCH PROVIDED
12:00 PM - 12:15 PM | THIS COURSE IS 1 HOUR
FROM 12:15 PM - 1:15 PM

12:00 PM - 1:15 PM
30C2 - The Diabetic Epidemic. How Do We Get Ahead of It?

Speaker: TBD

Presented by: **ZEISS**

NOT FOR CREDIT | LUNCH PROVIDED
12:00 PM - 12:15 PM | THIS COURSE IS 1 HOUR
FROM 12:15 PM - 1:15 PM

SPECTACLE LENS EXPERT Track

This track is designed for ECPs with a baseline knowledge of lenses. With more lenses, materials and designs than ever before, customization offers endless opportunities to provide the most optimized vision for every need. ODs, Opticians and Technicians will learn together how these new offerings can protect patients from blue light, UV and digital eye strain, and assure the best possible outcomes with doctor-driven prescribing and Optician-reinforced recommending.

SUPPORTED BY AN UNRESTRICTED EDUCATIONAL GRANT FROM: **ESSILOR**

THURSDAY, SEPTEMBER 27

9:45 AM - 10:45 AM
23O1 - ANSI-Z80.1-2015 What's New?
Michael Vitale, ABOM, LDO, NCLEC

2:45 PM - 4:45 PM
25O1 - Spectacle Lens Update: Everything You Need to Know
Michael Vitale, ABOM, LDO, NCLEC

5:00 PM - 6:00 PM
26O1 - Matching Lens Technology to Patient Needs
Michael Vitale, ABOM, LDO, NCLEC

FRIDAY, SEPTEMBER 28

8:30 AM - 9:30 AM
31O1 - Digital Eyestrain
Michael Vitale, ABOM, LDO, NCLEC

9:45 AM - 11:45 AM
32O3 - What Features Should Your Freeform Progressive Have?
Edward De Gennaro, MEd, ABOM

5:00 PM - 6:00 PM
34O1 - Light Filtering Lenses
Valerie Manso

SATURDAY, SEPTEMBER 29

8:30 AM - 9:30 AM
41O1 - Clinical Applications for Press on Optics
Blair Wong, NCLEC, ABOM

9:45 AM - 10:45 AM
42O1 - At Arm's Length - Near to Intermediate Solutions
Laurie Pierce, LDO, ABOM, NCLC

AD - TBD

VISION EXPO EAST | MARCH 15 - 18, 2018

SUPPORTING THE PRACTICE EXPERIENCE

10 HOURS OF CONTINUING EDUCATION FOR OPTICAL PROFESSIONALS

Thursday, March 15

The New Customer Experience: Staying Relevant

3:45 p.m. – 4:45 p.m.
Speaker: Michael Kling, O.D.

Building Your Financial Foundation

5:00 p.m. – 6:00 p.m.
Speaker: Michael Kling, O.D.

Saturday, March 17

Innovation, Technology, and the Patient Experience

9:45 a.m. – 11:45 a.m.
Speaker: Mark Mattison-Shupnick, ABOM

Improving Quality Care Through Medical Optometry

2:45 p.m. – 4:45 p.m.
Speakers: Masoud Nafey, O.D. F.A.A.O., and Dustin Krassin, O.D.

Friday, March 16

Creating a Culture of Trust

7:15 a.m. – 8:15 a.m.
Speaker: Michael Kling, O.D.

Creating a Practice Budget

9:45 a.m. – 10:45 a.m.
Speaker: Michael Kling, O.D.

Customer Expectations: Breaking the Mediocre Mindset

11:00 a.m. – 12:00 p.m.
Speaker: Michael Vitale, ABOM

Sunday, March 18

Advanced Optics - Through the Looking Glass

12:30 p.m. – 1:30 p.m.
Speaker: Phernell Walker, ABOM

SUPPORTED BY AN UNRESTRICTED EDUCATIONAL GRANT FROM
VSP® OPTICS GROUP AND EYEFINITY®

AD - TBD

BEHIND SIMPLE

Topcon's 3D OCT-1 MAESTRO™ has one-touch, auto-alignment making it easy to use and the preferred choice of eye care professionals around the globe. The MAESTRO requires minimal staff training and ensures that you get a high quality OCT and color fundus image every time.

"With the Maestro, generating high-quality images is extremely efficient and almost effortless. I can train my staff to capture images in a day, and its footprint is incredibly small."

—Travis Johnson, OD
Murfreesboro, TN

MEET THE MAESTRO at VEE Booth #MS4823



TOPCON

YOUR VISION. OUR FOCUS.

Maestro Dimensions: MIN 12.1"W x 18.5"D x 20.4"H | MAX 17.7"W x 26.3"D x 28.4"H
©2017 Topcon Medical Systems, Inc. | newsgam.topconmedical.com/maestro MCA# 2002

THE BEST VALUE FOR YOUR Education Dollars

WE WORK HARD TO FIND THE BEST DEALS FOR YOUR TRAVEL ARRANGEMENTS SO YOU DON'T HAVE TO.

PREFERRED AIRLINE

DELTA AIRLINES

2-10% DISCOUNT, USE CODE NMQJR
WWW.DELTA.COM

ADDITIONAL TRAVEL DISCOUNTS

TBD

WWW.UNITED.COM

AMTRAK

10% DISCOUNT, USE CODE X29F-972
PHONE: (800) 872 7245

BOOK YOUR NYC HOTEL TODAY AT VisionExpoEast.com/Travel

\$219 Candlewood Suites Times Square

- \$209 DoubleTree by Hilton Hotel New York Times Square West
- \$229 DoubleTree by Hilton Times Square South
- \$270 Element New York Times Square West
- \$209 Embassy Suites New York-Midtown Manhattan
- \$249 EVEN Hotels New York - Times Square South
- \$229 Fairfield Inn & Suites New York Manhattan/ Penn Station
- \$249 Fairfield Inn & Suites New York Times Square
- \$249 Four Points by Sheraton Midtown Times Square
- \$229 Hampton Inn Manhattan/Times Square Central
- \$205 Hampton Inn Manhattan - Madison Square Garden Area
- \$249 Hampton Inn Times Square South
- \$219 Hilton Garden Inn New York/West 35th Street
- \$199 Hilton Garden Inn New York Times Square South
- \$239 Hilton Garden Inn Times Square
- \$239 Hilton Garden Inn Times Square Central
- \$215 Hilton New York Fashion District
- \$229 Holiday Inn Express Times Square
- \$239 Homewood Suites Times Square South
- \$169 Hudson
- \$219 INNSIDE New York NoMad
- \$209 Millennium Broadway Hotel New York
- \$209 New York Hilton Midtown
- \$248 New York Marriott Eastside
- \$345 New York Marriott Marquis
- \$239 Novotel New York Times Square
- \$225 Park Central Hotel New York
- \$199 ROW NYC
- \$269 Sheraton New York Times Square Hotel
- \$269 The Muse
- \$239 TRYP by Wyndham Times Square South
- \$329 Westin New York at Times Square
- \$199 YOTEL New York

EDUCATION PACKAGES Offer Flexibility and Value

AS LOW AS
\$30 PER COURSE HOUR

NEED TO ACCESS IT ALL?
WANT FLEXIBILITY AND THE BEST VALUE FOR YOUR EDUCATION DOLLARS?
SHARING HOURS WITH CO-WORKERS?
THERE IS A SOLUTION FOR EVERYONE.

TOTAL OFFICE PACKAGES

- Package E: 25 hours of education
\$864 — up to 4 people (\$35/hr.)
- Package F: 35 hours of education
\$1,111 — up to 7 people (\$32/hr.)
- Package G: 45 hours of education
\$1,362 — up to 10 people (\$30/hr.)

With 12 unique education packages, only pay for the hours that you want and participate in the sessions that interest you. Vision Expo provides the best value for your education dollars. Through Total Office Packages, distribute the hours among your group and get expert education for you, a co-worker, or the entire staff.

OptiCon® @ **VISION EXPO** **\$249 PACKAGE**

SAME QUALITY AND AFFORDABLE PRICING

Now at Vision Expo, Opticians and Contact Lens Technicians will find the same preferred pricing structures previously available at OptiCon. You will have access to a comprehensive \$249 education package that includes:

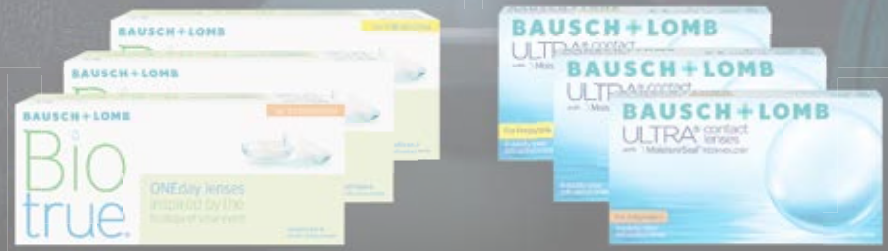
- 15 hours of ABO & NCLE approved continuing education including an exclusive General Session
- Exhibit Hall access
- Lunch vouchers
- Tailored special events including a welcome party and peer networking
- Access to discounted rates at a dedicated OptiCon hotel

FOR COMPLETE PRICING AND PACKAGE DETAILS SEE BACK PAGE

AD - TBD

BAUSCH+LOMB

All-day comfort starts with innovative technology



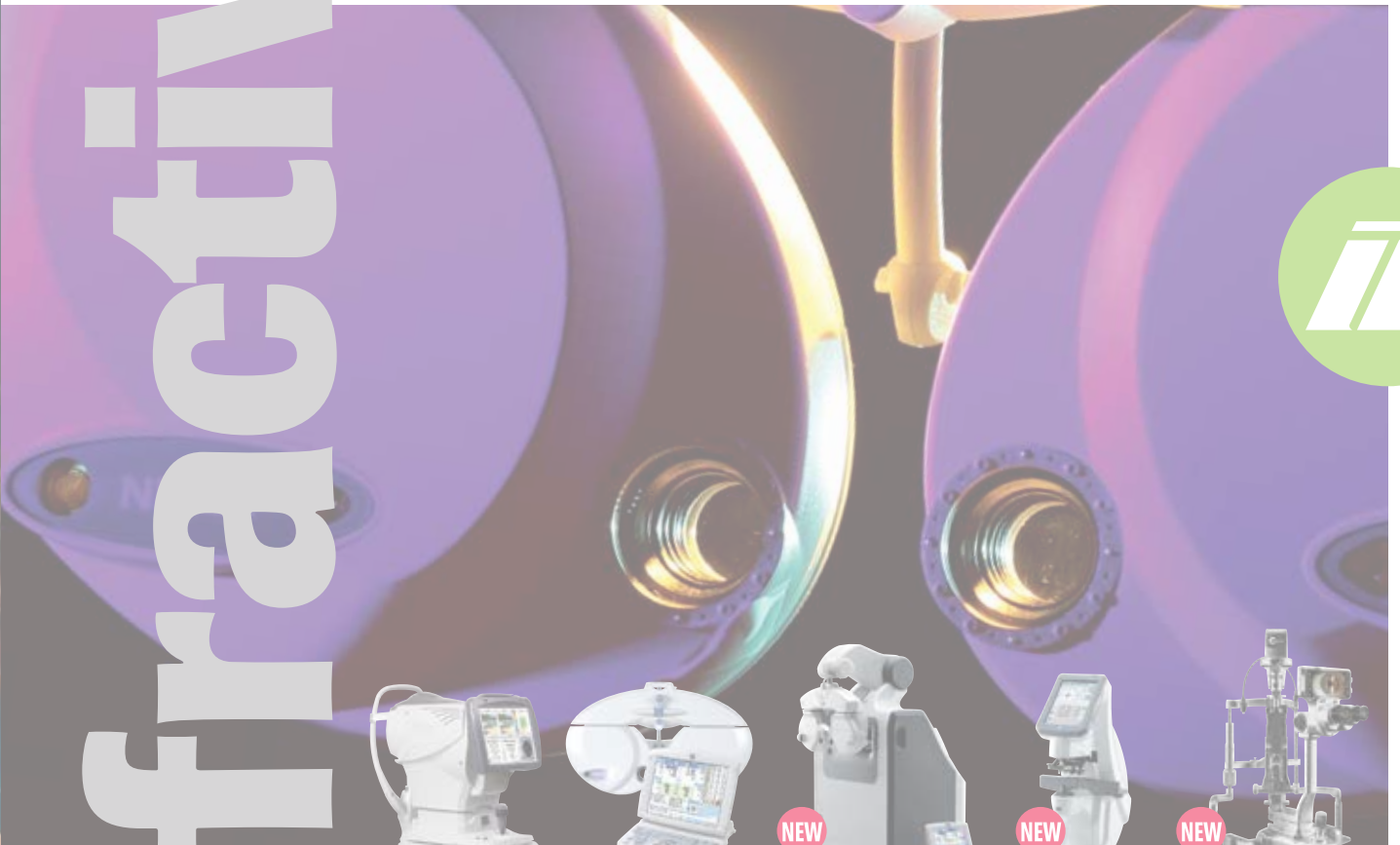
THE FAMILIES ARE COMPLETE

AVAILABLE FOR ASTIGMATISM

®/™ are trademarks of Bausch & Lomb Incorporated or its affiliates. ©2017 Bausch & Lomb Incorporated. MTB.0115.USA.17

AD - TBD

Refractive



OPD-Scan III Wavefront and ARK Systems



TRS-5100/3100 Total Refraction Systems



NEW

TS-310 Tabletop Refractive System



NEW

LM-7 Series Auto Lensmeters



NEW

ULTRA M5 Slit Lamp with iON Imaging



EPIC Refraction Workstation

SOLUTIONS

Automated technology includes the OPD-Scan III Integrated Wavefront Aberrometer, the TRS-5100/3100 Digital Refractors, Autorefractors/ Keratometers and EPIC Refraction Workstation. **NEW PRODUCTS INCLUDE:** TS-310 Tabletop Refractive Workstation, LM-7 Series Lensmeters—all with EMR integration. Also introducing the NEW Ultra M Series Slit Lamps with the integrated anterior segment iON IMAGINGSM System.

The Difference is Marco.



Designed and Manufactured by NIDEK - Represented by Marco 800-874-5274 • marco.com

2018 VISION EXPO

Supporters

BAUSCH + LOMB



Better Sight. Better Life.



TBD



2018 VISION EXPO ENDORSERS



CONFERENCE Advisory Board

MEET THE MEMBERS WHO HAVE BEEN ACTIVELY INVOLVED IN THE DEVELOPMENT OF THIS YEAR'S EDUCATION MEETING.



Mark Dunbar, OD, FAAO, Co-Chairman
CAB Chairman, Michigan College of Optometry at Ferris State University



Laurie Pierce, LDO, ABOM, NCLEC
Newbury College Ophthalmic Dispensing Program



Vincent Young, MD
Temple University, Temple University Medical School



Ben Gaddie, OD, FAAO, Co-Chairman
CAB Chairman, University of Alabama at Birmingham School of Optometry



Jack Schaeffer, OD
University of Georgia, Southern College of Optometry



Dave Ziegler, OD
Southern California College of Optometry



Kirk Smick, OD, FAAO
Former Chairman, Pacific University College of Optometry



Louise Sclafani, OD
Illinois College of Optometry

Advisor:



Douglas Devries, OD
Pacific University College of Optometry



Phernel Walker, BSB, NCLEC, ABOM
Bryman College, Hillsborough Community College, Excelsior College



Barry Eiden, OD
Director of Special Education Projects



Joy Gibb, ABOC
LDS Business College

OPTICON Advisory Board

MEET THE MEMBERS WHO HAVE BEEN ACTIVELY INVOLVED IN THE DEVELOPMENT OF THIS YEAR'S EDUCATION MEETING.



Tom Barracato, ABOC, NCLEC
Owner, Adolph Optical, ABO Chair, OAA Representative



Blair Wong, ABOM, NCLEC
OAB Co-Chair, Benjamin Franklin Institute of Technology Opticianry Department Chair, OAA Representative



Janet Acara, ABOC, NCLEM
Erie Community College, NFOS Representative



Curt Duff, ABOM, NCLEM
OAB Co-Chair, NCLE Vice-Chair, Owner, Tinder-Krauss-Tinder Opticians, NCLEM, OAA Representative



Terri M. Klein, NCLEM
North Suburban Eye Specialists, CLSA Representative



Michelle Self, ABOC
ABO Treasurer, University of Alabama Birmingham School of Optometry, NAO Representative



Patrick Goughary, ABOM, NCLEM
Camden County College Vision Technology Program, ABOM, NCLEM, NCLE Chair, CLSA Representative



Tina Palumbo
Foerster Baschko Accountants, Public Representative



Michael Gzik, ABOC, NCLEM
New York Optometric, OAA Representative



Beverly Harper, ABOC
Owner, Cook Inlet EyeCare, OAA Representative

YOUNG PROFESSIONALS Advisory Group

MEET THE MEMBERS WHO HELP SHAPE THE YOUNG PROFESSIONAL ATTENDEE EXPERIENCE.



Brianna Branch
Illinois College of Optometry, Class of 2019



Jordan Edwards, ABOC
Frame Buyer, EyeCare Partners



Bimal Patel, OD
Owner of Focus - Refined Eye Care, Houston, TX



William To, OD, ABOC
Optical Illusions, Founder, At Will Consulting



Andrew C. Dias, III, ABO-AC, FNAO, HFOAA
Optical Manager, Metropolitan Optical



Quy Nguyen, OD
Director of Career Development and Minority Enrichment, SUNY College of Optometry



Kristin O'Brien, OD
Owner, Vision Source of GVR, Optometric Insights

AD - TBD

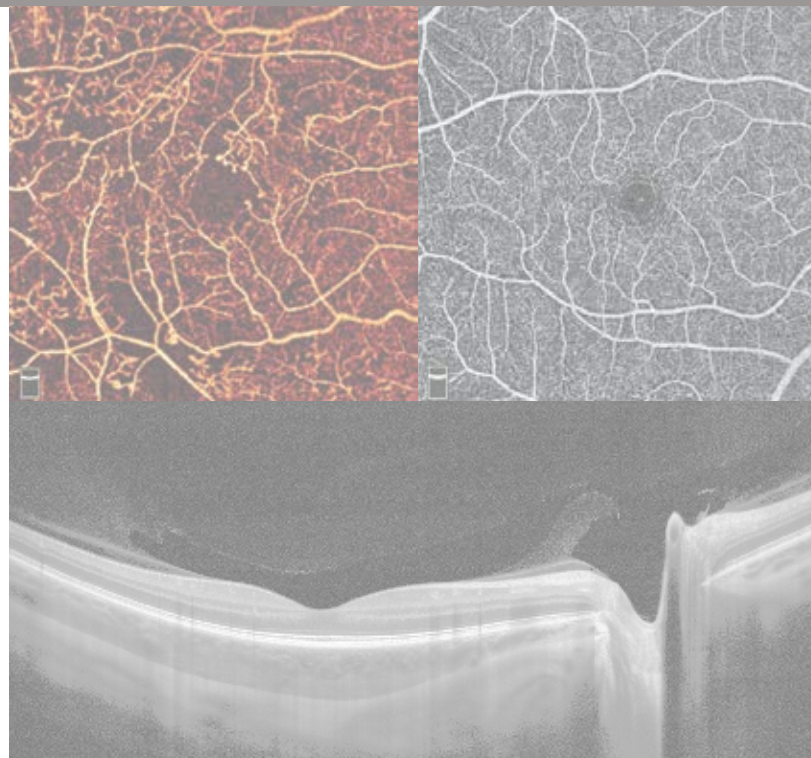
BRING OCT ANGIOGRAPHY INTO DAILY PATIENT CARE

Upgrade to the **Avanti Widefield OCT** or bring in OCT angiography with **AngioVue Essential** or **AngioVue Comprehensive**.

Ask us about **Trade in & Lease Options** offered exclusively at Vision Expo East.

You'll get the newest OCT technology backed by **Optovue's industry leading support:**

- Onsite training
- One-year warranty
- Five years of tier one phone support
- Free software updates for five years



- **Widefield OCT** shows the macula and optic disc with a single scan
- **Wellness Solution** aids in the diagnosis of ocular disease
- **Non-Invasive Visualization of Vasculature** when you add OCTA imaging
- **Data Transfer Solutions** to maintain patient data

Take advantage of our VEE Show Specials!

Booth# MS5033

www.optovue.com
(866) 344-8948



AD - TBD

We Re-Envision Vision



Meeting the need. An increasing aging and diabetic population gives way to an increased number of patients diagnosed with retinal diseases. Regeneron is committed to delivering targeted therapies that can impact your patients' vision.

Learn more about our *science to medicine* approach at Regeneron.com.

REGENERON

science to medicine[®]

science to medicine is a registered trademark of Regeneron Pharmaceuticals, Inc.

©2016, Regeneron Pharmaceuticals, Inc.,
777 Old Saw Mill River Road, Tarrytown, NY 10591

All rights reserved

08/2016
US-OPH-1176(2)

FREE! GLOBAL CONTACT LENS FORUM

This informative and highly attended 'meeting within a meeting' provides attendees with up to the moment information and insight about what is happening in the world of contact lenses. Providing both a clinical and business perspective, practitioners can expect to leave with new outlooks that will have immediate impact on their contact lens practice. Don't miss the state of the contact lens industry which we will have a panel comprised of the heads of professional relations from the major contact lens and pharmaceutical manufacturers. The topic of discussion will be "Future Trends in Contact Lenses and Ocular Surface Disease, where have we been and where are we going?". Other illuminating sessions, presented by some of the most highly renowned contact lens experts, will highlight the management of the complex contact lens patient as well as how to successfully establish and develop a contact lens specialty practice.

7:00 AM–8:00 AM	10L1 - FREE State of the CL Industry – Future Trends in Contact Lenses and Ocular Surface, Where Have We Been and Where Are We Going Moderator: Barry Eiden, OD; Panelists: Louise Sclafani, OD; Jill Saxon, OD; Millicent Knight, OD; Michele Andrews, OD C,FL-OP,FL-OD,N,NYS-CL-I
9:00 AM–11:00 AM	10L2 - FREE Clinical Management of the Challenging Contact Lens Patient - Case Studies Moderator: Louise Sclafani, OD; Panelists: John Gelles, OD; Clark Chang, OD; Ryan McKinnis, OD; Stephanie Woo, OD C,FL-OP,FL-OD,N,NYS-CL-I
11:15 AM–12:15 PM	10L3 - FREE Establishing and Succeeding in Specialty Contact Lens Practice - The Business of a Contact Lens Specialty Practice Moderator: Barry Eiden, OD; Panelists: Bob Steinmetz, OD; Brooke Messer, OD; Susan Resnick, OD; Clarke Newman, OD C,FL-OP,FL-OD,N,NYS-CL-I

	CLINICAL					CONTACT LENS
1:30 PM–3:30 PM	11C1 Glaucoma Update: New Tools and Treatment Options Chaglasian C,FL-OD,TPA,T	11C2 OCT, OCTA, The What, When, How? Shechtman, Rodman C,FL-OD	11C3 Simplifying Systemic Antibiotics Lonsberry C,FL-OD,O,TPA,T	11C4 Revitalizing the Established Practice Through Technology Henne C,FL-OD	11C5 Refractive Surgery Problem Solving Tullo, Owen C,FL-OD	11L1 The Continuum of Care in Keratoconus: From Spectacles to Contact Lenses to Surgery McKinnis, Chang, Eiden C,FL-T,FL-OD,N,NYS-CL-I
3:45 PM–4:45 PM	12C1 Glaucoma Clinical Pearls and Clinical Cases Chaglasian C,FL-OD,TPA	12C2 Macular and Retinal Holes Refer or Not Shechtman C,FL-OD,TPA	12C3 Retina Grand Rounds Haynie C,FL-OD	12C4 Diagnosing and Managing Ocular Emergencies and Urgencies Lonsberry C,FL-OD,TPA	12C5 The Swollen Optic Nerve - Now What? Lighthizer C,FL-OD,TPA	12L1 Modern Hybrid Fitting: The Next Generation McKinnis C,FL-T,FL-OD,N,NYS-CL-I
5:00 PM–6:00 PM	13C1 Laser Therapy for the Open Angle Glaucomas ALT SLT Lighthizer C,FL-OD,TPA	13C2 Laser Therapy for the Open Angle Glaucomas ALT SLT Lighthizer C,FL-OD	13C3 Retina Grand Rounds Haynie C,FL-OD	13C4 Ocular Surface Disease - TFOS DEWS II and Other Guidelines, What Does It All Mean? Lahr C,FL-OD,TPA	13C5 West Only TBD C,FL-OD	13L1 Medically Necessary Contact Lens: Why It Makes \$ense in Private Practice Steinmetz, Sclafani C,FL-T,FL-OD,N,NYS-CL-I
6:00 PM–8:00 PM	10C1 ODs ON FACEBOOK AFTER DARK: THE EYE DISEASE FORUM Moderator: Alan Glazier, Bill Potter, Marc Bloomenstein, Viola Kanevsky, Andrew Morgenstern, Mark Dunbar, Scot Morris C,FL-OD					

ACCREDITATION LEGEND

A - ABO, C - COPE, FL-OD - Florida State Board of Optometry, FL-OP - Florida State Board of Opticianry, FL-T - Florida State Board of Opticianry - Technical, N - NCLE, NYS-D/CL - B/1/A - New York State Optician - Dispensing/Contact Lens - Basic/Intermediate/Advanced, O - Orals, P - AOA Paraoptometric Commission, T - TQ/CEE, TPA - Therapeutic

FREE! OCULAR SURFACE DISEASE AND WELLNESS SYMPOSIUM

This Symposium teaches you how to take your ocular practice to the next level delivering a totally integrated health care model for patient diagnosis and treatment of ocular surface diseases. Learn and gain expertise in recognizing dry eye diseases and clinical aspects of ocular surface from diagnosis through treatment resulting in expanded quality and consistency of patient care for today's thriving practices.

1:30 PM–3:30 PM	10L4 - FREE The Specialty Practice of Ocular Surface Disease and the Current State of the Dry Eye Practice Jack Schaeffer, OD; Paul Karpecki, OD; Marc Bloomenstein, OD; Richard Adler, MD C,FL-OP,FL-OD,N,NYS-CL-I
3:45 PM–6:00 PM	10L5 - FREE Ocular Surface Disease: The Diagnosis, Treatment, and Case Studies in Ocular Surface Disease Jack Schaeffer, OD; Paul Karpecki, OD; Marc Bloomenstein, OD; Richard Adler, MD C,FL-OP,FL-OD,N,NYS-CL-I

OPTICAL TECHNOLOGY		BUSINESS SOLUTIONS		
1101	1102	11B1	11B2	11B3
Handling Prescriptions That Contain Prism Walker A,FL-T,NYS-D-I	Eyeglass Repair Hacks You Need to Know! Yoho A,FL-OP,NYS-D-I	Frame Board Management Carter A	10 Solutions to Fix A Failing Facebook Page Bazan A,C,FL-OD	The Power & Politics of Disrupting Traditional Eye Care Santini A,FL-OP,NYS-D-I
Dispensing to the Generations Pierce A,FL-OP,NYS-D-I	Eyewear Fitting, Measuring and Adjusting Yoho A,FL-T,NYS-D-I	Total Recall Carter A	Climb Up The Rankings: An Intro to Search Engine Optimization Glover, Lyerly A,C,FL-OD	The New Customer Experience: Staying Relevant Kling A,C,FL-OD
Grand Rounds for Opticians and Technicians Walker A,P,FL-OP,NYS-D-I	Sports and Safety Yoho A,FL-OP,NYS-D-I	Customer Service vs. Customer Experience Gibb A	Building Your Financial Foundation Kling C,FL-OD	West Only TBD

LOOK FOR THE COLOR-CODED OPTICON LOGO (👉) IN THE DAILY COURSE GRIDS SCHEDULE SIGNIFYING SESSIONS BEING DEVELOPED BY OPTICON.

OPTICON CATEGORIES KEY: **SPECTACLE LENS** **CONTACT LENSES** **BUSINESS**

AD - TBD

AD - TBD

Please note: The availability of the products and features may differ in your country. Specifications and design are subject to change. Please contact your local distributor for details.



NEW! Crystal TEAR Report
**Make Dry Eye Diagnosis
 Crystal Clear!**



This new software assists you in finding the cause of dry eye quickly and reliably. Summarize all data from your dry eye workup in one report!

- Save time: The complete examination process can be delegated.
- Excel with your dry eye diagnosis: The complete course of treatment is recorded.
- Combine screening and patient education: Your patient receives an easy-to-grasp printout.

Visit the OCULUS booth #MS4539 at VEE in New York

LIPIFLOW

LIPISCAN

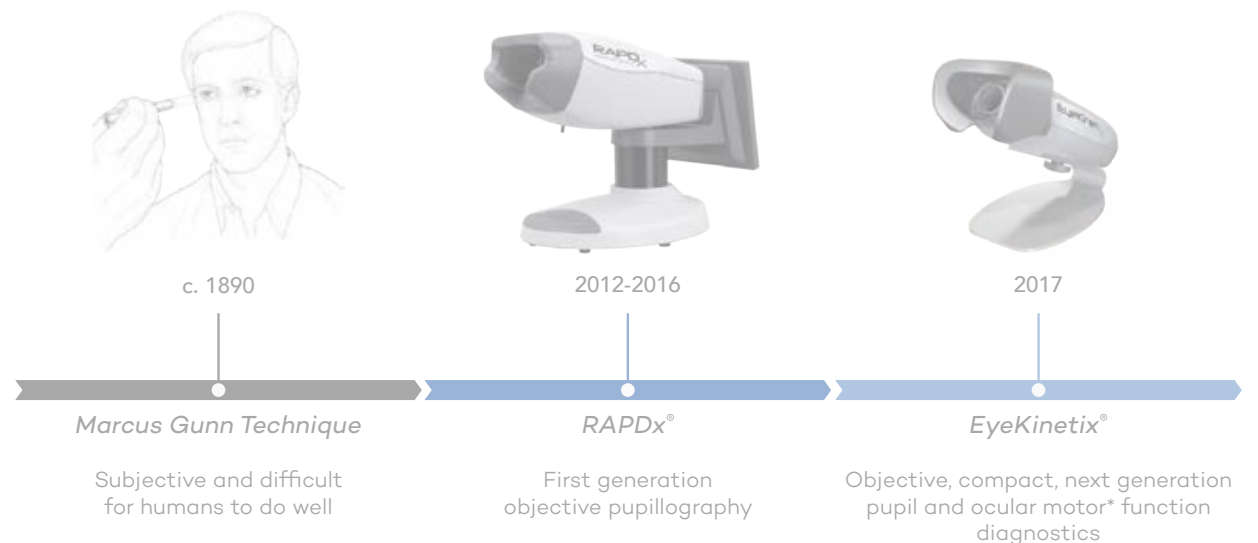
now part of

Johnson & Johnson VISION



Introducing EyeKinetix

NextGen Pupil + Ocular Motor* Function Diagnostics For Under \$10k



*Ocular motor function tests are not yet cleared for sale in the USA



	CLINICAL						CONTACT LENS	ABO EXAM REVIEW SESSIONS	NCLE EXAM REVIEW SESSIONS
7:15 AM - 8:15 AM	21C1 Managing the Glaucoma Suspect <i>Madonna</i> <small>This course is 2 hours from 7:15 am - 9:15 am</small>	21C2 Changing the Paradigm in Diabetic Retinopathy <i>Thimons</i> C,FL-OD	21L3 Contact Lens Fitting Techniques for Infants and Children <i>Sindt</i> C,FL-T,FL-OD,N,NYS-CL-I	21C4 OPEN			21L1 SPECIALTY LENS TRACK SCLERAL LENSES 101: Basic Fitting <i>Woo, Barnett</i> C,FL-T,FL-OD,N,NYS-CL-B		
8:30 AM - 9:30 AM		22C2 New Developments with OCT Testing in Glaucoma <i>Fingeret</i> C,FL-OD,TPA,T	22C3 The Rapidly Changing Landscape of Refraction Technologies - How They Will Impact Your Practice and Where You Should Go From There <i>Karpecki, M. Schaeffer</i> C,FL-OD		22C5 Straight Outta Tears: Treating and Managing MGD, Lid Bugs and Other Lid Thugs! <i>Bloomenstein</i> C,FL-OD,TPA	22C6 The Optometrists' Guide to Cross-Linking: Diagnosis to Evaluating Treatment Options <i>Sindt, Chang</i> C,FL-OD,TPA	22L1 SPECIALTY LENS TRACK SCLERAL LENSES: Advanced Fitting: <i>Johns, Barnett</i> C,FL-T,FL-OD,N,NYS-CL-A		
9:45 AM - 10:45 AM	23C1 Glaucoma Treatment Considerations <i>Chaglasian</i> C,FL-OD,TPA	23C2 The Greatest Anterior Segment Disease and Medical Management of Contact Lens Complications Course - Ever! <i>Karpecki, Bloomenstein, J. Schaeffer</i> <small>This course is 2 hours from 9:45am - 11:45am</small>	23C3 Surgical Correction of Presbyopia <i>Owen, Chang</i> C,FL-OD,TPA	23C4 Interactive Grand Rounds <i>Lonsberry</i> <small>This course is 2 hours from 9:45am - 11:45am</small>	23C5 Using New Technology to Decipher and Diagnose OSD <i>Brimer</i> C,FL-OD,TPA	23C6 New Frontiers in the Detection and Management of Diabetic Retinopathy <i>Chous, Thomas</i> C,FL-OD	23L1 SPECIALTY LENS TRACK SCLERAL LENSES: Trouble Shooting <i>Johns, Woo</i> C,FL-T,FL-OD,N,NYS-CL-I		
11:00 AM - 12:00 PM	24C1 Innovations in Diabetic Retinopathy <i>Dunbar, Modi, Singh</i> C,FL-OD	24C3 The Optometrist's Role in Preparing Your Patient for Cataract & Refractive Surgery <i>Owen, Chang</i> C,FL-OD,TPA,T		24C5 Create Distinction and Build Your Practice with New Technologies <i>Jasper</i> C,FL-OD	24C6 Managing the Psychology of Dry Eye Disease - The Role of Diagnostics <i>Adler</i> C,FL-OD	24L1 EVERYTHING BUT SCLERAL LENSES <i>Woo, Barnett</i> C,FL-T,FL-OD,N,NYS-CL-I			
12:15 PM - 2:30 PM	20C1 - FREE VISION SERIES - PRESENTED BY BAUSCH + LOMB Bausch + Lomb: Advancing Contact Lens Innovation <small>Lunch Provided 12:15 pm - 12:30 pm This course is 1 hour from 12:30 pm - 1:30 pm</small>		20C2 - FREE VISION SERIES - PRESENTED BY NOVARTIS Ocular Allergy Disease State and Treatment Update <small>Lunch Provided 12:15 pm - 12:30 pm This course is 1 hour from 12:30 pm - 1:30 pm</small>			20C3 OCT Workshop <i>Shechtman, Rodman</i> \$186, Limited Attendance <small>This workshop is 2 hours from 12:30 pm - 2:30 pm</small>			
2:45 PM - 4:45 PM	25C1 Glaucoma Grand Rounds: How Would You Manage This Case <i>Madonna</i> C,FL-OD,TPA	25C2 The Greatest Posterior Segment Disease Course - Ever! <i>Haynie, Gerson, Dunbar</i> C,FL-OD,TPA	25C3 Optometric Surgical Procedures - Laser, Injectables and Minor Surgical Procedures <i>Lighthizer</i> C,FL-OD,TPA,T	25C4 The Differential Diagnosis and Treatment of Corneal Staining <i>Sindt</i> C,FL-OD	25C5 Keratoconus Corneal Disease Corneal Cross-Linking and More <i>Morgenstern, Eiden, Tullo</i> C,FL-OD	25C6 OPEN TBD	25L1 Scleral Lens Workshop <i>Newman, Gelles, Chang, Barnett</i> \$186 Limited Attendance		
5:00 PM - 6:00 PM	26C1 New Ideas in Glaucoma <i>Madonna</i> C,FL-OD,TPA	26C2 Ocular Nutrition Controversies <i>Gerson</i> C,FL-OD,TPA	26C3 Demystifying Lid Disease: ODS Guide to Skin Cancer <i>Bloomenstein</i> C,FL-OD,TPA	26C4 Solutions for the Visually Impaired: Affordable for Your Patient; Profitable for Your Practice <i>Paul</i> C,FL-OD	26C5 WEST ONLY OPEN TBD	26C6 OPEN TBD	26L1 Specialty Lens Workshop <i>Woo, McKinnis, Newman, Barnett</i> Limited Attendance		

OPTICAL TECHNOLOGY	BUSINESS SOLUTIONS							
21O1 OptiCon @ VISION EXPO GENERAL SESSION Back to the Future: Why Our Past Matters <i>Flieschman</i> <small>Breakfast Included</small> A,N	21B1 Creating A Culture of Trust <i>Kling</i> A,C,FL-OD	21B2 PRACTICE MANAGERS/OWNERS How To Compete In a Digitally Connected World <i>Moderator: Ziegler</i> <i>Panelists: Morris, Bazan, Charest</i> A,C,FL-OD	LOOK FOR THE COLOR-CODED OPTICON LOGO (🏷️) SIGNIFYING SESSIONS BEING DEVELOPED BY OPTICON. OPTICON CATEGORIES KEY: SPECTACLE LENS CONTACT LENSES BUSINESS					
22O1 How Dry Eye Disease Impacts Vision and Refraction <i>Lawrence</i> A,P,FL-OP,N,NYS-CL-I	22O2 Zeiss Vision - UV TBD	22B1 Coding and Billing for Front Office <i>Carter</i> A	22B2 Retail Tactics: Differentiating Yourself and Your Practice <i>Manso</i> A	22B3 Ch...Ch...Ch... Changes: Overcoming Resistance <i>Record</i> A,FL-OP,NYS-D-I	22B4 RETAIL TRACK Must Have Eyewear Trends for 2018 <i>Gibb</i> A	22B5 PRACTICE MANAGERS/OWNERS How To Measure Financial Success <i>Moderator: Ziegler</i> <i>Panelists: Binkowitz, Morris, Wright</i> A,C,FL-OD	22B6 Building Loyalty with Millennials <i>Glover, Lyerly</i> A,C,FL-OD	
23O1 SPECTACLE LENS EXPERT TRACK ANSI-Z80.1-2015 What's New? <i>Vitale</i> A,FL-T,NYS-D-I	23O2 DISPENSING ESSENTIALS My Top Tips for Excellence in Dispensing <i>Pierce, De Gennaro</i> A,FL-OP,NYS-D-I	23B1 What Does An Audit Look Like? <i>Carter</i> A	23B2 My Best Business Lessons <i>Binkowitz</i> A,C,FL-OD	23B3 How To Respond to the 64 Million Dollar Question - Why Do Glasses Cost So Much? <i>Record</i> A	23B4 Intro to Social Media Marketing <i>Glover, Lyerly</i> A,C,FL-OD	23B5 PRACTICE MANAGERS/OWNERS How To Grow and Transition Your Practice <i>Moderator: Ziegler</i> <i>Panelists: Wright, Hayes</i> C,FL-OD	23B6 Creating a Practice Budget: The Foundation for Financial Success <i>Kling</i> A,C,FL-OD	
24O1 DISPENSING ESSENTIALS Basic Dispensing Skills for the New Optician <i>Walker</i> A,FL-OP,NYS-D-B	24O2 Don't Sacrifice Excellent Vision for Fashion <i>Pierce</i> A,FL-OP,NYS-D-I	24B1 Customer Expectations - Breaking the Mediocre Mindset <i>Vitale</i> A	24B2 Profiting With Vision Care Plans <i>Binkowitz</i> A,C,FL-OD	24B3 Dynamic Dispensing <i>Carter</i> A,FL-OP,NYS-D-I	24B4 NEED TBD	24B5 PRACTICE MANAGERS/OWNERS How To Market Your Practice <i>Moderator: Ziegler</i> <i>Panelists: Charest, Wright</i> A,C,FL-OD	24B6 DISC - The Science of Communicating and Connecting with People <i>Nguyen</i> C,FL-OD,A	
25O1 SPECTACLE LENS EXPERT TRACK Spectacle Lens Update: Everything You Need to Know <i>Vitale</i> A,FL-T,NYS-D-I	25O2 Eye Diseases That Opticians and Technicians Should Know About <i>Zeitlin</i> A,P,FL-OP,N,NYS-CL-I,NYS-D-I	25B1 RETAIL TRACK Coordinating Special Events and Trunk Shows <i>Reed</i> A	25B2 Know Your Digital Score -The Secret To Attracting New Patients <i>Carter</i> A	25B3 Patient Sales and Communication Techniques <i>Manso</i> A	25B4 NEED TBD	25B5 PRACTICE MANAGERS/OWNERS How To Build A Great Staff <i>Moderator: Ziegler</i> <i>Panelists: Morris, Wright</i> A,C,FL-OD	25B6 Combatting Disruptive Forces in Eyecare <i>Nguyen, Chirumbolo</i> C,FL-OD,A	
26O1 SPECTACLE LENS EXPERT TRACK Matching Lens Technology to Patient Needs <i>Vitale</i> A,FL-T,NYS-D-I	26O2 Multifocal IOL's - How Do They Work, How Do They Affect Refraction? <i>Lawrence</i> A,FL-OP,N,NYS-CL-I	26B1 RETAIL TRACK Design On A Dime - Simple Changes That Add Revenue and Wow <i>Reed</i> A	26B2 Just One More Sale: Making Multiple Pairs Happen Every Day <i>Santini</i> A,NYS-D-I	26B3 Why Cash Matters: Understanding Your Cash Flow <i>Kling</i> A,C,FL-OD	26B4 21st Century Practice Design to Maximize Vision Insurance & Patient Satisfaction <i>Rogoff</i> A,C,FL-OD	26B5 PRACTICE MANAGERS/OWNERS How To Build the Ultimate Optical <i>Moderator: Ziegler</i> <i>Panelists: Gerber, Binkowitz, Pierce</i> A,C,FL-OD		



DISPENSING Essentials For Your Staff

This diverse track covers core competencies for Opticians and Technicians in four key areas: clinical, technical, fashion and sales. The program is also recommended as a staff cross-training tool.

SUPPORTED BY AN UNRESTRICTED EDUCATIONAL GRANT FROM: ESSILOR

WEDNESDAY, SEPTEMBER 26

1:30 PM – 3:30 PM

1102 — Eyeglass Repair Hacks You Need to Know!
Alex Yoho, ABOM

3:45 PM – 4:45 PM

1202 — Eyewear Fitting, Measuring and Adjusting
Alex Yoho, ABOM

THURSDAY, SEPTEMBER 27

9:45 AM – 10:45 AM

2302 — My Top Tips for Excellence in Dispensing
Laurie Pierce, LDO, ABOM, NCLC; Edward De Gennaro, MEd, ABOM

11:00 AM – 12:00 PM

2401 — Basic Dispensing Skills for the New Optician
Phernell Walker, ABOM, NCLC

FRIDAY, SEPTEMBER 28

8:30 AM – 9:30 AM

3103 — Sight - The Story of Vision
Blair Wong

2:45 PM – 4:45 PM

3301 — Basic Principles of Refraction for Opticians and Technicians
Laurie Pierce, LDO, ABOM, NCLC

5:00 PM – 6:00 PM

3402 — Why Eyeglasses Fit Badly and What To Do About It
Edward De Gennaro, MEd, ABOM

SATURDAY, SEPTEMBER 29

11:15 AM – 12:15 PM

4202 — How the Eye Works
Laurie Pierce, LDO, ABOM, NCLC

NEW: ODs ON FACEBOOK After Dark

WEDNESDAY, SEPTEMBER 26

6:00 PM – 8:00 PM

10C1 - ODs on Facebook After Dark: The Eye Disease Forum

Moderator: Alan Glazier, OD, FFAO

Panelists: Bill Potter, OD; Viola Kanevsky, OD; Andrew Morgenstern, OD; Mark Dunbar, OD; Scot Morris, OD; Marc Bloomenstein, OD

The optical industry's largest and most influential online community, ODs on Facebook is well known as an accessible, valuable forum for crowd-sourced, expert content. Bring that conversation live at International Vision Expo, while learning and sharing business best practices, clinical cases, and social media pearls with your peers.

ODs ON FACEBOOK Party

FRIDAY, MARCH 16

8:00 PM – 9:00 PM

Vision Expo is teaming up once again with Alan Glazier, founder of ODs on Facebook, to host a gathering

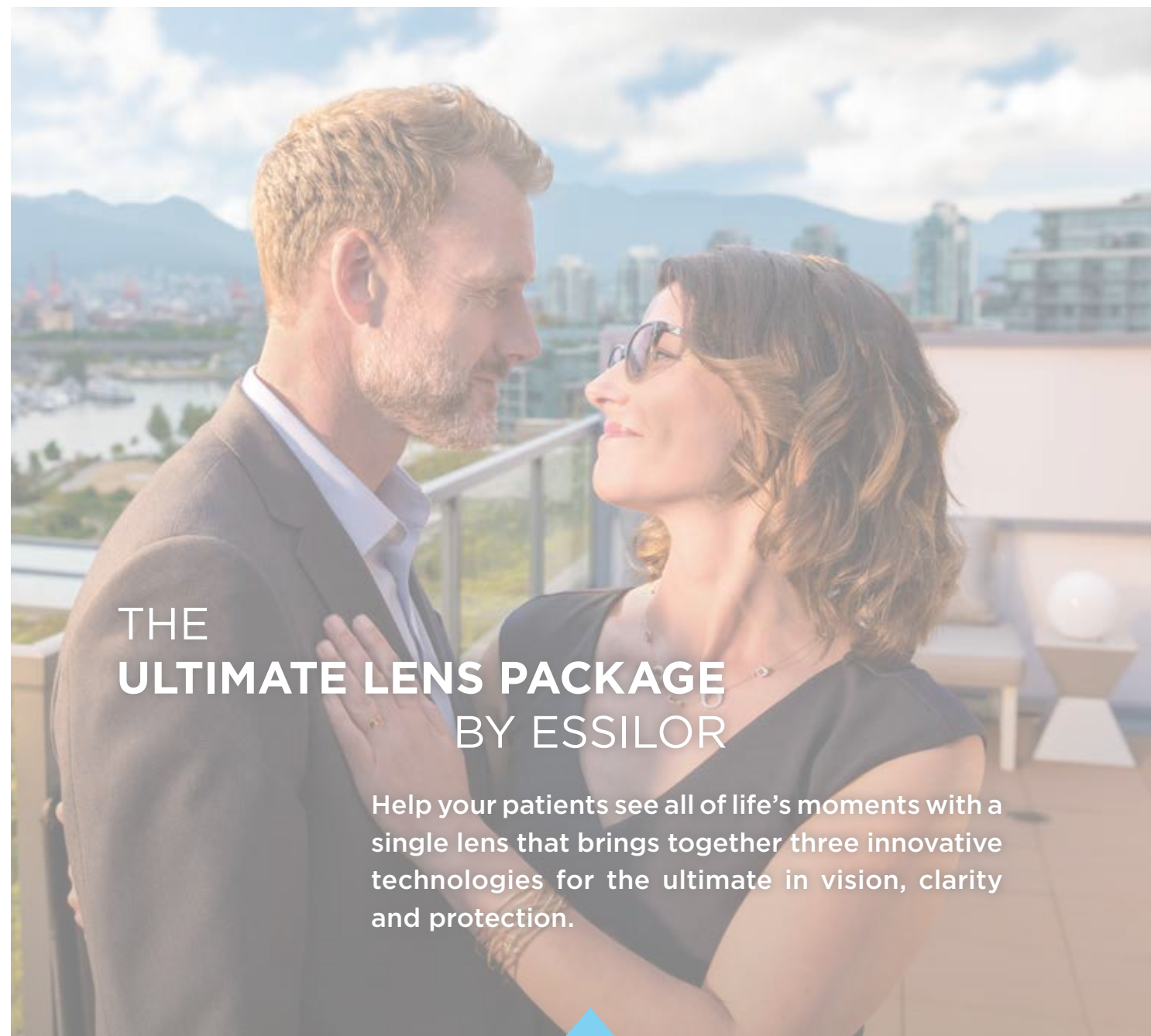
TBD

make that in-person connection.



AD - TBD

©2017 Essilor of America, Inc. All rights reserved. Unless indicated otherwise, all trademarks are the property of Essilor International and/or its subsidiaries in the United States and in other countries. Transitions, the swirl and Transitions Signature are registered trademarks of Transitions Optical, Inc. used under license by Transitions Optical and Photometrics performing as instructed by Transitions Optical, Inc. and its subsidiaries.



THE ULTIMATE LENS PACKAGE BY ESSILOR

Help your patients see all of life's moments with a single lens that brings together three innovative technologies for the ultimate in vision, clarity and protection.



NEW VARILUX® X SERIES™
extends the area of sharp vision within arm's reach



NEW CRIZAL SAPPHIRE® 360° UV
reduces glare and reflections from all directions



TRANSITIONS® SIGNATURE® VII
adapts to light inside and outside for comfortable vision

Also available for single vision patients with Eyezen™+, Crizal Sapphire® 360° UV, and Transitions® Signature® VII.

To learn more about the **Ultimate Lens Package** contact your Essilor Sales Consultant or visit EssilorUltimateLens.com

Better Sight.
Better Life.



CLINICAL							CONTACT LENS	ABO EXAM REVIEW SESSIONS	NCLE EXAM REVIEW SESSIONS	
7:15 AM-8:15 AM	30C0 - FREE									
	VISION SERIES - PRESENTED BY TOPCON Wide Field Swept Source OCT... Tomorrows Technology, Today! Speakers: Jay Haynie, Justin Bazan, Donald Hood, Michael Chaglasian NOT FOR CREDIT									
8:30 AM-9:30 AM	31C1 Contemporary Care of the Patient With Diabetes <i>Gerson</i> C,FL-OD, O, TPA	31C2 Pearls For Success - Co-Management of Cataract Patients and How To Manage Every Post-Op Complication Possible <i>Johnston</i> C,FL-OD, TPA	31C3 The Central Ten Degrees <i>Fingeret, Liebmann</i> C,FL-OD	31C4 How to Optimize Your Patient's Retinal Health Over a Lifetime <i>Dierker</i> C,FL-OD, TPA	31C5 Dry Eye Disease It's Not What You Think <i>Hauser</i> C,FL-OD, TPA	31C6 Optometry's Wheelhouse... Visual Impairment: Applying Everyday Basic Low Vision Skills Can Be Life Altering <i>Gagnon</i> C,FL-OD	31L1 PEDS in CLS: "I Can Wear Contacts, Too!" <i>Messer</i> C, FL-T, FL-OD, N, NYS-CL-I			
9:45 AM-11:45 AM	32C1 Cases and Controversies in Glaucoma <i>Liebmann, Fingeret</i> C,FL-OD, TPA, T	32C2 Ocular Inflammation Rare and In The Chair <i>M. Schaeffer, Hauser</i> C,FL-OD,TPA, T	32C3 Medical and Surgical Aesthetics: (oculoplastic surgery, injectables) The Ophthalmological and Optometric Perspectives Moderator: Sclafani Panelist: Albrecht, McGee C,FL-OD, TPA, T	32C4 Understanding and Interpreting OCT <i>Gaddie, Dunbar</i> C,FL-OD,TPA	32C5 Age Related Macular Degeneration- Current Concepts and Future Directions <i>Haynie</i> C,FL-OD,TPA	32C6 MACRA, MIPS, APM's: More Toxic Alphabet Soup - and the Antidote To Survive the Meal <i>Lippiatt, Petito</i> C,FL-OD	32L1 Contact Lens Fitting for the Ever Growing Market: The Presbyopic Patient <i>Messer</i> C,FL-T,FL-OD, N, NYS-CL-I			
12:00 PM-1:15 PM	30C1 - FREE			30C2 - FREE						
	VISION SERIES - PRESENTED BY SHIRE INSIIGHTS AT VEE Speakers: Katherine Mastrotta, Arthur Epstein NOT FOR CREDIT			VISION SERIES - PRESENTED BY CARL ZEISS MEDITEC The Diabetic Epidemic. How Do We Get Ahead Of It? Speakers: Aaron Lech, April Jasper, A. Paul Chous NOT FOR CREDIT						
2:45 PM-4:45 PM	33C1 Ocular Surface Disease The Medical Business of Dry Eye A Comprehensive Course on OSD Evaluation, Diagnosis, and Treatment Strategies <i>Devries, Hom, J. Schaeffer</i> C,FL-OD, TPA, T	33C2 The Surgical Update 2018 What Every Optometrist Needs to Know <i>Schweitzer, Johnston</i> C,FL-OD, TPA, T	33C3 Incorporation of Aesthetics Into the Optometric Practice Moderator: Sclafani Panelist: Nikiforak, Elliott C,FL-OD,TPA	33C4 Rheumatology, Thyroid Dysfunction, and the Eye <i>Caldwell</i> C,FL-OD	33C5 Diabetes Case Studies <i>Chous</i> C,FL-OD	33C6 The Shifting Sands of Dry Eye and MGD - Expert Perspective <i>Hauser, Epstein</i> C,FL-OD,TPA, T	33L1 Myopia Control: Strategies, Science, Success <i>Glazier, Lipson</i> C,FL-OD, FL-T, N, NYS-CL-I			
5:00 PM-6:00 PM	34C1 Innovations in IOP Technology for Glaucoma <i>Schweitzer</i> C,FL-OD,TPA	34C2 OCT Angiography <i>Rodman</i> C,FL-OD	34C3 Digital Dry Eye <i>Hom</i> C,FL-OD,TPA	34C4 Low Vision Clinic 2.0 - Step Up Your Game! <i>Porter</i> C,FL-OD	34C5 West Only TBD C,FL-OD	34C6 West Only TBD C,FL-OD	34L1 RGP 123 Corneal Re-Shaping, Sclerals and Multifocals: Incorporating GPS Into Your Practice <i>Lipson</i> C,FL-T,FL-OD, N, NYS-CL-I			

ALLIED HEALTH	OPTICAL TECHNOLOGY				BUSINESS SOLUTIONS				
	31A1	31O1	31O2	31O3	31B1	31B2	31B3	31B4	31B5
	Ocular History Taking - The Ten Most Important Pieces of Information You Need to Provide Your Doctor <i>Zeitlin</i> P, FL-OP,N	SPECTACLE LENS EXPERT TRACK Digital Eyestrain <i>Vitale</i> A,FL-T,NYS-D-I	No Wonder You Don't See Well - How Eye Diseases Affect Vision <i>Lawrence</i> A,P,FL-OP,N, NYS-CL-I,NYS-D-I	Sight - The Story of Vision <i>Wong</i> A,P,FL-OP,N, NYS-CL-I,NYS-D-I	Getting the Best Return From Your Slow Moving Frames <i>Santini</i> A	Lost Revenue Opportunities and How to Reclaim Them <i>Binkowitz</i> A,C,FL-OD	Demystify Managed Vision Care <i>Hinton</i> A,C,FL-OD	Must Have Eyewear Trends for 2018 <i>Gibb</i> A	How To Achieve 50%+ Multiple Pair Sales! <i>Gerber</i> A
	32A1	32O1	32O2	32O3	32B1	32B2	32B3	32B4	
	Screening for Diabetic Eye Diseases - What Every Optician and Technician Should Know <i>Lawrence</i> A,P,FL-OP, N	Innovation, Technology and The Patient Experience <i>Santini</i> A,C,FL-OD	Clinical Ocular Concepts for Opticians, Technicians and Ancillary Staff <i>Young</i> A,P,FL-OP,N, NYS-CL-I,NYS-D-I	SPECTACLE LENS EXPERT TRACK What Features Should Your Freeform Progressive Have? <i>De Gennaro</i> A,FL-T,NYS-D-I	Visual Merchandising Tactics <i>Reed</i> A	10 Ways To Increase Profitability <i>Wright</i> A,C,FL-OD	Goals: A Guide To Setting, Keeping Track, and REALLY Achieving Them <i>Record</i> A,FL-OP	TBD TBD TBD	
	33A1	33O1	33O2	33O3	33B1	33B2	33B3	33B4	33B5
	The Optician's and Technician's Role in Cataract Surgery Co-Management <i>Young</i> A,P	Basic Principles of Refraction for Opticians and Technicians <i>Pierce</i> A,FL-T,N, NYS-CL-I,NYS-D-I	Prism Applications A to Z <i>Walker</i> A,FL-T,NYS-D-I	The Truth About Optical Myths, Half Truths, and Falsehoods <i>De Gennaro</i> A	Double Your Sales in One Week <i>Hinton</i> A,C,FL-OD	Optical Merchandising Secrets: The New Rules Of Optical Retailing for 2018 <i>Gerber</i> A	12 Common Practice Management Mistakes and How To Fix Them Fast! <i>Record</i> A,FL-OP	Improving Quality Care Through Medical Optometry <i>Nafey, Krassin</i> C,FL-OD	TBD TBD TBD
	34A1	34O1	34O2		34B1	34B2	34B3	34B4	34B5
	This Is Your Eye - This Is Your Eye on Drugs: Pharmacology for Opticians and Techs <i>Young</i> A,P,FL-OP,N	SPECTACLE LENS EXPERT TRACK Light Filtering Lenses <i>Manso</i> A,FL-T,NYS-D-I	Why Eyeglasses Fit Badly and What To Do About It <i>De Gennaro</i> A,FL-T,NYS-D-I		Answering the Challenge of Online Eyewear <i>Santini</i> A	Building Sales Without Selling <i>Binkowitz</i> A,C,FL-OD	Overcoming Patient Objections <i>Hinton</i> A	West Only TBD	West Only TBD

NETWORKING & Events

VISION EXPO HAPPY HOUR

FRIDAY, MARCH 16 & SATURDAY, MARCH 17
4:30 PM – 6:00 PM

Stop by the lounges on the show floor to relax, sip complimentary wine or beer, and network with fellow attendees.

OptiCon® @ VISION EXPO PARTY

FRIDAY, MARCH 16 | 7:30 PM – 9:00 PM

SPONSORED BY: Europa Eyewear

Join the party at Stitch Bar & Lounge to meet and mingle with eyecare professionals celebrating OptiCon @ VisionExpo. Located in the heart of New York City's historic Garment District, you'll be within walking distance to other nighttime hotspots like Madison Square Garden, Herald Square, Times Square and more.

OptiCon® @ VISION EXPO HUB

BOOTH #G1164

This dedicated show floor destination is designed specifically for Opticians and Contact Lens Technicians and will host pop up talks, networking, social events and access to representatives and resources from ABO & NCLE, NAO, OAA, CLSA, NFOS, and vendor partners.

STUDENT EDUCATION SESSION

SATURDAY, MARCH 17 | 10:00 AM – 12:00 PM

Arranged by the cooperative efforts of NYSOA and NewGradOptometry.com, join us for this exciting program where you will get to network with students from across the country and meet other

ODs ON FACEBOOK PARTY

FRIDAY, MARCH 16 | 8:00 PM – 9:00 PM

Vision Expo is teaming up once again with Alan Glazier, founder of ODs on Facebook, to host a gathering open to all ophthalmic professionals who are active in the social network or looking to engage. Your show badge is all you need for FREE entry to this must-attend event, so join us at B.B. King Blues Club, grab a drink and make that in-person connection.

BAD HABITS “EYE DOCS OF ROCK” PARTY & VISION EXPO OPENING NIGHT PARTY

POP UP TALKS

Join fellow attendees for free and fast-paced Pop Up Talks. In just 30 minutes, get an update on key industry topics and fashion forward trends from industry and media experts. No RSVP required.

KICKSTART YOUR CAREER

Calling all young professionals and students: Visit the NewGradOptometry.com & CovalentCareers booth for the resources you need to shape your career, from mentoring sessions to Pop Up Talks with career tips just for you.

TBD

SATURDAY, MARCH 17 | 9:30 AM - 2:00 PM

WINNERS ANNOUNCED:

SATURDAY MARCH 17 | 4:00 PM

Attendees can view entries and vote for the best new product featured in the Product Gallery as part of the Vision Choice Awards. Votes can be cast by ballot throughout the show and all those who vote will be automatically entered to win a \$500 exhibit hall shopping spree. Voting ends at 2:00 PM on Saturday, March 17.

CORPORATE OPTOMETRY ON FACEBOOK PANEL & RECEPTION

FRIDAY, MARCH 16 | 4:30 PM – 6:30 PM

Engage with the industry's thought leaders to discuss the range of business models in which optometrists can practice corporate optometry today—you may even discover new career opportunities to explore. Following the panel, enjoy complimentary beverages and networking with panelists and peers.

most well-known hot spots in NYC. Your show badge is all you need for free entry into this annual must-attend show opener.

BEST EXHIBITOR BOOTH CONTEST

WINNERS ANNOUNCED:

SUNDAY, MARCH 18 | 4:00 PM

For the first time at Vision Expo East, you can vote in the Vision Expo mobile app for your favorite exhibitor booths in two categories: MOST CREATIVE BOOTH DESIGN and BEST USE OF TECHNOLOGY. The exhibitor with the most attendee votes in each category will win sponsorship credits as well as social and other media coverage. Plus, one voter each day will win a prize so stay tuned and cast your vote!

SEE MORE AT VisionExpoNY.com/Experiences

CLINICAL				CONTACT LENS
8:30 AM–9:30 AM	41C1 Co-Management of Premium IOL Patients Pearls for Maximizing Patient Satisfaction and Surgical Outcomes Johnston C,FL-OD,TPA	41C2 Doctor, I See Double Simplifying Diplopia Sowka C,FL-OD	41C3 New Apps for the iLid Nanda C,FL-T,FL-OD,N,NYS-CL-I,TPA	41L1 What Can An OD Learn From An Allergist Hom C,FL-T,FL-OD,N,NYS-CL-I,TPA
9:45 AM–10:45 AM	42C1 When ODs Become Emergency Room Doctors Gurwood, Myers This course is 2 hours from 9:45 am - 11:45 am	42C2 Neuro-Ophthalmic Update Caldwell, Sowka This course is 2 hours from 9:45 am - 11:45 am	42C3 Visual Performance Evaluation for Sports Erickson This course is 2 hours from 9:45 am - 11:45 am	42L1 Custom Soft Lenses: Designs and Applications Resnick C,FL-T,FL-OD,N,NYS-CL-I
11:00 AM–12:00 PM	43C1 Dailies News The Revolution in One Day Lenses Resnick C,FL-OD,O,TPA,T	43C2 Dailies News The Revolution in One Day Lenses Resnick C,FL-OD,TPA	43C3 Dailies News The Revolution in One Day Lenses Resnick C,FL-OD	43L1 Dailies News The Revolution in One Day Lenses Resnick C,FL-T,FL-OD,N,NYS-CL-I
12:15 PM–1:30 PM	40C1 - FREE VISION SERIES - PRESENTED BY REGENERON Diabetic Eye Disease - Diagnosis and Management Strategies for Patients Speakers: Carlo Pelino, Nathan Steinle NOT FOR CREDIT			
12:30 PM–1:30 PM				
1:45 PM–3:45 PM	45C1 The Ocular Manifestations of Diabetes Gurwood, Myers C,FL-OD,TPA,T	45C2 Prevention of Medical Errors Sowka C,FL-OD	45C3 Optimizing Visual Performance for Sports Erickson C,FL-OD	45L1 Forget Facebook These Contacts Really Matter Nanda C,FL-T,FL-OD,N,NYS-CL-I

OPTICAL TECHNOLOGY		BUSINESS SOLUTIONS	
41O1 SPECTACLE LENS EXPERT TRACK Clinical Applications for Press On Optics Wong A,FL-T,NYS-D-I	41O2 Grand Rounds for Opticians and Technicians Walker A,P,FL-OP,NYS-D-I	41B1 West Only TBD	41B2 Customer Service vs. Customer Experience Gibb A
42O1 SPECTACLE LENS EXPERT TRACK At Arm's Length - Near to Intermediate Solutions Pierce A,FL-T,NYS-D-I	42O2 Contact Lenses: Building on the Fundamentals Walker FL-OP,N,NYS-CL-B	42B1 Sell More Eyewear Hinton A	42B2 TBD TBD
43O1 How the Effective Rx Can Change Visual Acuity Wong A,FL-T,N,NYS-CL-I,NYS-D-I	43O2 How the Eye Works Pierce A,P,FL-OP,N,NYS-CL-B,NYS-D-B	43B1 Simplify Pricing - Increase Revenue Hinton A	43B2 The 5 Things You MUST Do in Marketing Wilhelm A
LOOK FOR THE COLOR-CODED OPTICON LOGO (👉) SIGNIFYING SESSIONS BEING DEVELOPED BY OPTICON. OPTICON CATEGORIES KEY: SPECTACLE LENS CONTACT LENSES BUSINESS			
	44O2 Advanced Optics - Through the Looking Glass Walker A,FL-T,NYS-D-A	44B1 Key Performance Indicators That Drive Profits Binkowitz A,C,FL-OD	44B2 TBD TBD
45O1 Clinical Approaches To Spectacle and Contact Lens Formulas Wong A,P,FL-T,N,NYS-CL-I,NYS-D-I	45O2 Hey PAL, Trouble Shooting and Matching Tasks Manso A,FL-T,NYS-D-I	45B1 Frame Board Management Gibb A	45B2 Learn to Digitally Dominate Wilhelm A

EDUCATION REGISTRATION

- Course handouts will be available online prior to the Education Program. They will not be available onsite. After you register for your courses, you will be able to print your own course handouts and bring them to the Education Program. Course handouts will also be available online for one month after the program and on the Vision Expo Mobile App.
- In an effort to improve the Education registration process, badges will not be mailed. Please bring your confirmation letter with barcode onsite to Registration to have your badge and course itinerary printed when you arrive at the conference. This will ensure that you have the most up-to-date course information on your badge barcode and course itinerary, including room numbers.

- Your badge barcode will have all of your registered courses embedded in it, which is required for course entry. If you make any course changes onsite after you have already printed your badge, you will need to get a new badge printed so that your current courses are embedded in your updated badge barcode.
- After the Education Program, you will receive a letter via e-mail verifying your course attendance. Please submit this letter to your state board/national accreditation agency for license renewal. If you did not supply an e-mail address when you registered, please update your registration record by calling Client Services at 1.800.811.7151.

ACCREDITATION IS PENDING

The "pending CE approval" courses are being submitted to the accrediting agencies for consideration of approval — if the accreditation designation is NOT listed, the course is NOT being submitted to that agency.

ABOUT ACCREDITATION

The accreditation designations serve as a guide to assist you with course selections. The courses listed are "pending CE approval." Please refer to VisionExpoEast.com/learning under the Education tab for current CE approvals. You can change a course selection after you register by calling Client Services at 1.800.811.7151.

Vision Expo is not responsible for courses that do not receive accreditation. Do not assume that the courses you register for will be approved. You will not receive credit if you are late to a course. Course approval information will also be available onsite in the Education and Registration areas.



MEGA-3 FORTIFIES THE LIPID LAYER
WHEN MGD PATIENTS SUFFER FROM DRY EYE.



MEGA-3 is formulated with a blend of natural oils, which protects tears from evaporating while nourishing the tear film.

refreshbrand.com/doc | 

Learn About **Low Vision**

Learn the basics of Low Vision including the latest tools and devices for treatment of this condition that affects almost five million people in the United States, and can impact people of all ages.

Friday, March 16

5:00–6:00 p.m. Solutions for the Visually Impaired:
Affordable for your Patient;
Profitable for your Practice
Session 26C4
Edward Paul, O.D., Ph.D.



The Vision Council's programs help you enhance your career, your practice and your community's vision health.

www.thevisioncouncil.org

Saturday, March 17

8:30–9:30 a.m. Optometry's Wheelhouse...
Visual Impairment:
Everyday Basic Low Vision Skills
Applied, Can Be Life Altering
Session 31C6
Kara Gagnon, O.D.

5:00–6:00 p.m. Low Vision Clinic 2.0
Step up your game!
Session 34C4
Thomas Porter, O.D.

VISION EXPO

CONNECT WITH US!



#VISIONEXPO

AD - TBD

COMMITMENT TO OPTOMETRY YESTERDAY • TODAY • TOMORROW

TLC Laser Eye Centers® is North America's most experienced laser vision correction provider, having performed more than 2.2 million life-changing procedures in the past 20 years.

- Founded on optometric co-management, our partnering eye doctors play an crucial role on their patients' LASIK care team.
- TLC uses modern, bladeless technology for exceptional clinical outcomes.
- More than 7,000 doctors have trusted their own eyes to the surgeons at TLC.
- More eye doctors refer their patients to TLC than any other LASIK provider.



Call **877.TLC.2020** or visit **TLCVision.com** today

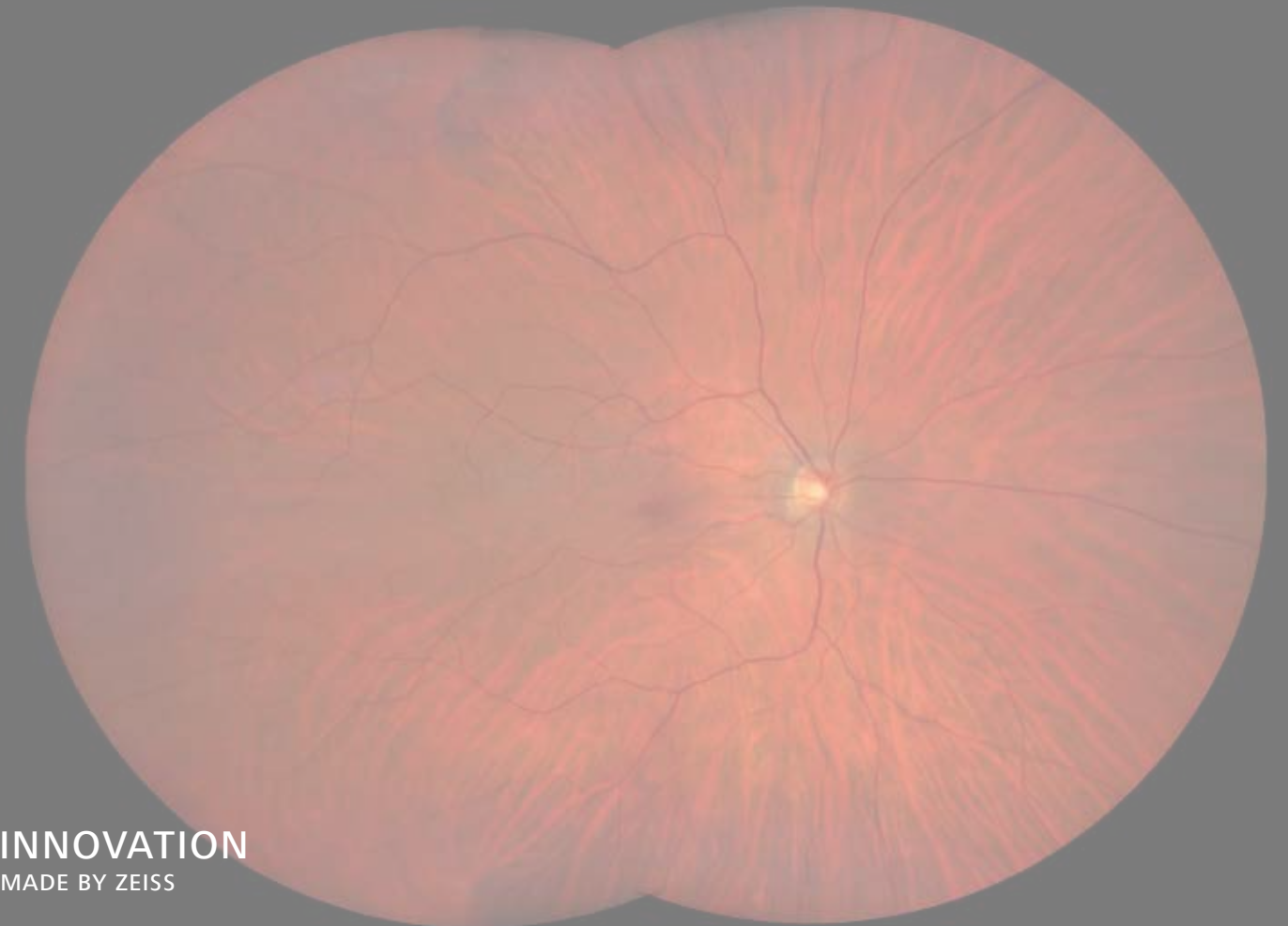
for more information on how to partner with us or strengthen your existing TLC relationship!

TLC
Laser Eye Centers®

AD - TBD

Imaging ultra-wide without compromise.

ZEISS HD Ultra-widefield



// INNOVATION
MADE BY ZEISS



ZEISS CLARUS 500
Color. Clarity. Comfort.

Compromising image quality may leave some pathology unseen. Introducing CLARUS 500, a next generation fundus imaging system from ZEISS that provides true color and high resolution in a single image.

Visit our booth #LP4003!

US_31_030_00531 ©2017 Carl Zeiss Meditec, Inc. All rights reserved.



AD - TBD

VISION EXPO EAST | MARCH 15 - 18, 2018

SUPPORTING THE PRACTICE EXPERIENCE

10

Hours of Continuing Education

6

World Class Presenters

1

Must See Program

COME VISIT US AT OUR EXPO BOOTH



Booth #1548



Booth #1235 & Booth #MS5127