

A Great Location for the Berkeley Practicum



Join us at the
**DoubleTree Hotel
in the Berkeley
Marina**

For Practicum attendees, DoubleTree Hotel offers...

- A spacious ballroom for the CE lectures
- Restaurant and waterfront walk overlooking the Bay

All DoubleTree Hotel guests may enjoy...

- Indoor swimming pools, whirlpools, and health club
- United Mileage Plus and Hilton Honors points
- BayPorter Express Shuttle (877-467-1800) to airports
- Complimentary shuttles to North Berkeley BART, UC Berkeley, and nearby shopping and dining areas

A block of rooms has been reserved for our group at a special rate.
To receive the discount...

- Make your reservation before December 23, 2016
- Call (800) 222-8733 or (510) 548-7920 and state you are with the School of Optometry or
- Reserve online and use group code BER at <http://www.berkeleymarina.doubletree.com>

For hotel information:

DoubleTree Hotel • (800) 222-8733
200 Marina Blvd., Berkeley, CA
www.berkeleymarina.doubletree.com

Berkeley Optometry

Presents the

28TH ANNUAL BERKELEY PRACTICUM

January 14-16, 2017

School of Optometry
Continuing Education Office
University of California
Berkeley, CA 94720-2020
Address Service Requested

Nonprofit Org.
U.S. POSTAGE
PAID
University of
California

Berkeley
UNIVERSITY OF CALIFORNIA

The Berkeley Practicum will provide **20 hours of continuing education** with presentations on:

- Glaucoma
- Binocular Vision
- Ocular Diseases
- Sports Vision and Concussion
- Crosslinking
- Sleep Apnea

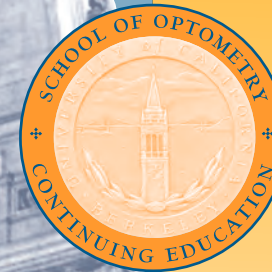
The program will be held at the DoubleTree Hotel in the Berkeley Marina.
Detailed information is available at <http://optometry.berkeley.edu/ce>.
Seats are limited, so please register as early as possible.

presents
the

28TH ANNUAL

BERKELEY PRACTICUM

UNIVERSITY OF
CALIFORNIA,
BERKELEY
School of Optometry



January 14 - 16, 2017

SATURDAY

SUNDAY

MONDAY

**DoubleTree Hotel
Berkeley Marina
200 Marina Boulevard
Berkeley, California**

<http://optometry.berkeley.edu/ce>

THE 28TH ANNUAL

BERKELEY PRACTICUM

We are pleased to invite you to join Berkeley Optometry for its 28th Annual Berkeley Practicum.

Claude Burgoyne, MD, glaucoma clinician and surgeon, will be the **Berkeley Practicum Keynote Speaker**. Dr. Burgoyne is the Van Buskirk Chair for Ophthalmic Research and Director of the Optic Nerve Head Research Laboratory at the Devers Eye Institute in Portland, Oregon. He is also a Clinical Professor of Ophthalmology within the Oregon Health and Sciences University.



Claude Burgoyne, MD

Dr. Burgoyne's laboratory studies the effects of aging and experimental glaucoma on the neural and connective tissues of the non-human primate optic nerve head within 3D histomorphometric reconstructions. The long-term goal of his work is to build a clinical science to predict how an individual human optic nerve head will respond to a given level of intraocular pressure. His lecture, **"New Paradigms for Imaging and Treating the Optic Neuropathy of Glaucoma,"** will present valuable information and insight for optometrists.

Additional CE speakers will provide presentations on:



- Binocular Vision
- Ocular Diseases
- Sports Vision & Concussion
- Crosslinking
- Sleep Apnea

We look forward to seeing you at the program.

Berkeley Optometry Continuing Education Committee

John Flanagan, OD, PhD, DSc(hon), FCOptom, FAAO
Harry Green, OD, PhD, FAAO
Patsy Harvey, OD, MPH, FAAO
Pam Satjawatcharaphong, OD, FAAO, FSLs
Anne Tasaki, OD, FAAO

For CE program information:

<http://optometry.berkeley.edu/ce>
e-mail: optoCE@berkeley.edu
(800) 827-2163 or (510) 642-6547

BERKELEY PRACTICUM

Five Reasons to Attend:

1. Renowned speakers presenting cutting edge material in an approachable way.

“Interesting, dynamic speaker. Very relatable.” – MS 2015



2. Clinically relevant updates to put in to practice today.

“Great resources that I can immediately use in practice!” – MS 2015



3. A platform for sharing ideas with colleagues, catching up with classmates and making new connections.

“Always look forward to the event. Besides taking my high-quality CE, a great chance to meet up with my classmates.” – BP 2014

4. The beautiful Berkeley Marina, centrally located in the Bay Area with easy access to both Oakland and San Francisco airports.

“What a view! It’s such a treat to take a quick walk on the bay during breaks.” – BP 2015

5. 20 Hours of Continuing Education with a variety of the most interesting and current topics including GLAUC-CE.



“Well-rounded program with a variety of great topics. So glad I was part of this great learning experience.” – MS 2014

REGISTER ONLINE through our secure server at www.regonline.com/UCBSO_BP2017

The schedule is subject to change without notice. For disability accommodations, please contact Berkeley Optometry or the hotel at least seven days in advance of the program.

Lecture Schedule

BERKELEY PRACTICUM – 2017

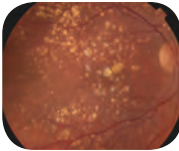
Saturday – January 14, 2017

6 TPA, 2 Misc. hrs. (includes 2 hrs. GLAUC-CE)

7:15 - 8:15 Sign-in and Continental Breakfast

8:15 - 12:00 Management of Childhood Esotropia for the Primary Eye Care Doc (COPE #45414-FV)
Susan Cotter, OD, MS - Prof. of Optometry, SCCO; Research Prof. Ophthalm., USC

BERKELEY PRACTICUM KEYNOTE SPEAKER - The Karen Walker-Brandreth Lecture
New Paradigms for Imaging and Treating the Optic Neuropathy of Glaucoma (COPE approval pending)
Claude Burgoyne, MD - Devers Eye Inst., Port., OR; Clin. Prof. Oregon Health & Sciences Univ.



12:00 - 12:50 Lunch

12:50 - 4:45 Blepharitis, MGD, and Ocular Surface Disease (COPE #47247-AS)
Ian B. Gaddie, OD - Director, Gaddie Eye Centers, Louisville, KY
Complications of Obstructive Sleep Apnea: A Growing Concern (COPE #46806-PS)
Intravitreal Injections: What We Must Know (COPE #41921-PS)
Jay Haynie, OD - Executive Clinical Director, Retina & Macula Specialists, WA

4:45 Sign-out

Sunday – January 15, 2017

6 TPA, 2 Misc. hrs. (includes 2 hrs. GLAUC-CE)

7:15 - 8:15 Sign-in and Continental Breakfast

8:15 - 12:00 Glaucoma Grand Rounds Diagnostic Dilemmas and Solutions (COPE #47300-GL)
Ian B. Gaddie, OD - Director, Gaddie Eye Centers, Louisville, KY
Diabetic Retinopathy (COPE #50074-PS)
Jay Haynie, OD - Executive Clinical Director, Retina & Macula Specialists, WA



12:00 - 12:50 Lunch

12:50 - 4:45 The 3Rs: Retinal Tear, Retinal Detachment, Retinoschisis (COPE approval pending)
A System for Interpretation of OCT and OCT Angiograms (COPE approval pending)
Scott Lee, MD - Retinal Specialist, East Bay Retina Consultants, Inc., Bay Area, CA
Sports Vision 101 (COPE approval pending)
Post-Concussion Vision Problems (COPE approval pending)
Jacqueline Theis, OD - Clinical Instructor, UC Berkeley School of Optometry

4:45 Sign-out

Monday – January 16, 2017

4 TPA hrs.

7:15 - 8:15 Sign-in and Continental Breakfast

8:15 - 12:00 Crosslinking Updates (COPE approval pending)
Jay Bansal, MD - Medical Director, LaserVue Eye Center, Bay Area, CA
Thought Provoking Cases in Anterior Segment (COPE #50880-AS)
HSV Epithelial Keratitis: Avoiding the Initial Misdiagnosis (COPE #49289-AS)
Mika Moy, OD - Clinical Professor, UC Berkeley School of Optometry
Christina Wilmer, OD - Assoc. Dean, Clin. Prof., Dir. Aff. Residency, UC Berkeley School of Optometry



12:00 Sign-out

Registration

REGISTRATION available only at: www.regonline.com/UCBSO_BP2017

PROGRAM

Includes CE lectures, downloadable handouts, continental breakfasts, and hot lunches (Sat/Sun).

Date Online Registration Received:

	By Nov. 16	By Dec. 14	After Dec. 14
		(if available)	(if available)
Full Program (20 hrs.)	\$590	\$625	\$650
Sat. & Sun. (16 hrs.)	\$515	\$545	\$570
Sat. & Mon. (12 hrs.)	\$400	\$425	\$445
Sun. & Mon. (12 hrs.)	\$400	\$425	\$445
Saturday only (8 hrs.)	\$285	\$305	\$325
Sunday only (8 hrs.)	\$285	\$305	\$325
Monday only (4 hrs.)	\$140	\$145	\$150

Cancellation / Refund Policy: All cancellation and program change requests must be made in writing by email to optoce@berkeley.edu. For policy details please see our website: optometry.berkeley.edu/ce.

PAYMENT

Registration payment will only be accepted ONLINE through our secure server at www.regonline.com/UCBSO_BP2017.

If you have questions about online registration or this causes an undue hardship, please contact us at optoce@berkeley.edu or by phone at (800) 827-2163 or (510) 642-6547.

REGISTER ONLINE through our secure server at www.regonline.com/UCBSO_BP2017

<http://optometry.berkeley.edu/ce>

BERKELEY PRACTICUM JANUARY 14-16, 2017